



00375307

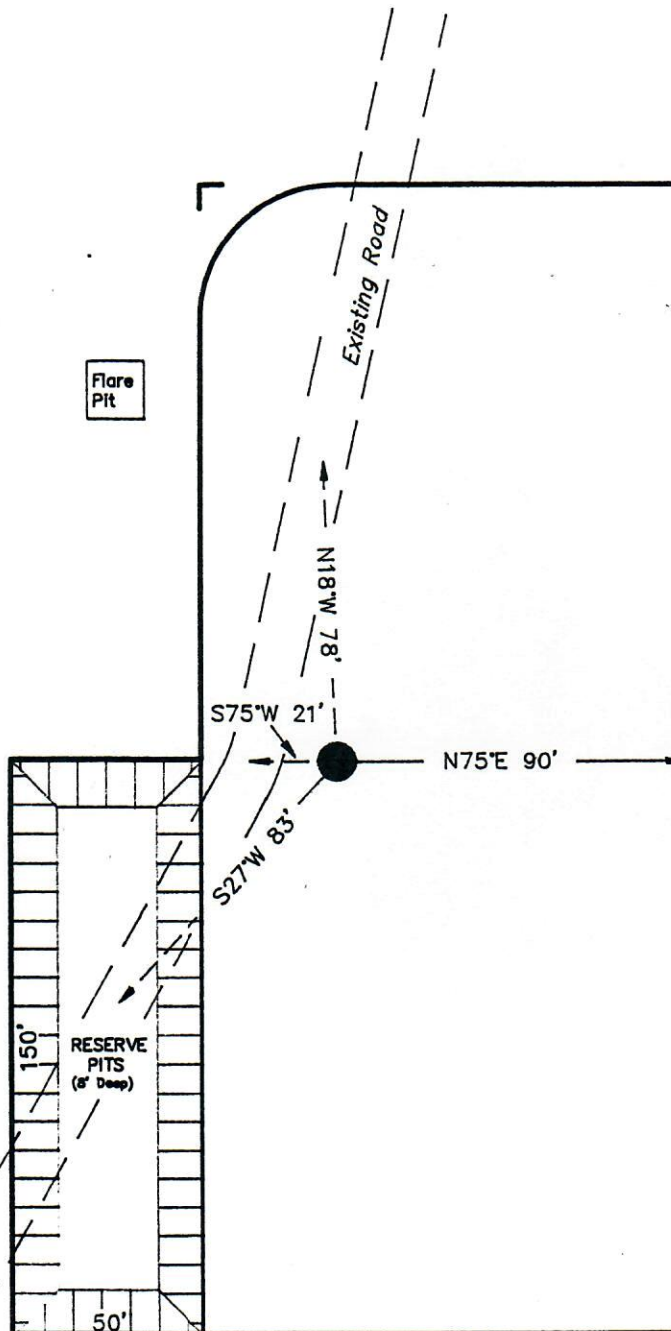
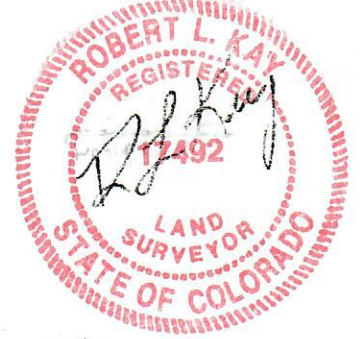
ORATION

## ADDENDUM TO LEGAL PLAT

SOUTH PICEANCE CREEK #3  
SECTION 19 T3S, R95W, 6th P.M.  
1980' FNL 1250' FWL



SCALE: 1" = 50'  
DATE: 6-12-94  
Drawn By: D.J.S.



Surface Use of Location is  
Grazing. Vegetation Consists  
Mainly of Pinions, Cedars,  
Mountain Mahogany, Grass, &  
Sagebrush.

UINTAH ENGINEERING &amp; LAND SURVEYING

85 So. 200 East

Vernal, Utah (801) 789-1017