



---

# Laramie Energy

## LONG STRING POST JOB REPORT

BCU FED #0993-14-07W 05-077-10610  
S:14 T:9S R:93W Mesa CO

CallSheet #: 94912  
Proposal #: 81877



**LONG STRING Post Job Report**

**Attention:** Mr. Aaron Duncan | (406) 498-4526 | aduncan@laramie-energy.com

Laramie Energy

1700 Lincoln Street, Suite 3950 | Denver, CO 80203

---

Dear Mr. Aaron Duncan,

Thank you for the opportunity to provide cementing services on this well. American Cementing strives to achieve complete customer satisfaction. If you have any questions regarding the services or data provided, please contact American Cementing at any time.

Sincerely,

**Addison Kneale**

Field Engineer I | (904) 228-9560 | addison.kneale@americacementing.com

**Field Office**      28730 US-6, Rifle, CO 81650  
Phone: (970) 657-1187

## Job Details & Summary

### Geometry

Type	Function	OD (in)	ID (in)	Weight (lb/ft)	Thread	Top (ft)	Bottom (ft)	Excess (%)
Casing	Outer	8.625	8.097	24	n/a	0	1550	0
Open Hole	Outer	n/a	7.875	n/a	n/a	1550	6310	33
Open Hole	Outer	n/a	7.875	n/a	n/a	6310	8260	30
Casing	Inner	4.5	4	11.6	LTC	0	8260	0

### Equipment / People

Unit Type	Unit	Power Unit	Employee #1
Cement Trailer Float	CTF-249	TRC-249	Steven Richey
Field Storage Silo	FSS-479		
Field Storage Silo	FSS-477		
Cement Trailer Float	CTF-579	TRC-244	Devin Burton
Light Duty Vehicles	LDV-168		James Lujan
Cement Pump Float	CPF-011	TRH-959	Joel Carrasco

### Timing

Event	Date/Time
ERTS	03/07/2025 00:00
Call Out	3/7/2025 09:00
Depart Facility	3/7/2025 12:25
On Location	3/7/2025 16:45
Rig Up Iron	3/7/2025 16:55
Job Started	3/7/2025 19:47
Job Completed	3/7/2025 21:52
Rig Down Iron	3/7/2025 22:05
Depart Location	3/7/2025 23:45

### General Job Information

Metrics	Value
Well Fluid Density	9.2 lb/gal
Well Fluid Type	WBM
Rig Circulation Vol	550 bbls
Rig Circulation Time	3 hours
Calculated Displacement	128 bbls
Actual Displacement	128 bbls
Total Spacer to Surface	25 bbls
Total CMT to Surface	0 bbls
Well Topped Out	No

### Job Details

Metrics	Value
Well Full Prior to Job	Yes
Well Fluid Density Into Well	9.2 lb/gal
Well Fluid Density Out of Well	9.2 lb/gal

### Job Details (cont.)

Metrics	Value
BHCT	174 °F
BHST	243 °F

### Water Analysis

Metrics	Value	Recommended
Water Source	None	
Temperature	55 °F	50-80 °F
pH Level	7	5.5-8.5
Chlorides	40 mg/L	0-3000 mg/L
Total Alkalinity	110	0-1000
Total Hardness	100 mg/L	0-500 mg/L
Carbonates	0 mg/L	0-100 mg/L
Sulfates	200 mg/L	0-1500 mg/L
Potassium	150 mg/L	0-3000 mg/L
Iron	0 mg/L	0-300 mg/L

## Circulation

Lost Circulation Experienced

No

## Job Execution Information

Fluid	Product	Function	Density (lb/gal)	Yield (ft <sup>3</sup> /sk)	Water Rq. (gal/sk)	Water Rq. (gal/bbl)	Volume (sks)	Volume (bbl)	Designed Top (ft)
1	IntegraGuard EZ	Spacer	11.00			33.21		40.00	641
2	Lead Cement	Lead	12.70	2.14	11.56		678.00	258.23	1550
3	Tail Cement	Tail	13.00	2.05	10.30		284.00	103.72	6310
4	Water with Chems	DisplacementFinal	8.34			42.00		128.00	0

## Job Fluid Details

Fluid	Type	Fluid	Product	Function	Conc.	Uom
1	Spacer	IntegraGuard EZ	S-8	StrengthRetgression	179.60	lb/bbl
1	Spacer	IntegraGuard EZ	GW-86	Viscosifier	0.90	lb/bbl
1	Spacer	IntegraGuard EZ	SS-201	Surfactant	0.50	gal/bbl
1	Spacer	IntegraGuard EZ	XCem-311	Defoamer	0.50	lb/bbl
2	Lead	Lead Cement	ASTM TYPE IL	Cement	100.00	%
2	Lead	Lead Cement	EC-2	BondEnhancer	1.00	%BWOB
2	Lead	Lead Cement	GW-86	Viscosifier	0.10	%BWOB
2	Lead	Lead Cement	IntegraSeal PHENO	LostCirculation	2.00	lb/sk
2	Lead	Lead Cement	IntegraSeal POLI	LostCirculation	0.25	lb/sk
2	Lead	Lead Cement	R-3	Retarder	0.50	%BWOB
2	Lead	Lead Cement	STATIC FREE	Other	0.01	lb/sk
2	Lead	Lead Cement	XCem-1009	Extender	10.00	lb/sk
2	Lead	Lead Cement	XCem-311	Defoamer	0.30	%BWOB
2	Lead	Lead Cement	XCem-532	FluidLoss	0.20	%BWOB
3	Tail	Tail Cement	CLASS G	Cement	50.00	%
3	Tail	Tail Cement	FLY ASH (POZZOLAN)	Extender	50.00	%
3	Tail	Tail Cement	BA-60	GasMigration	0.30	%BWOB
3	Tail	Tail Cement	BENTONITE - Cementgel	Viscosifier	6.00	%BWOB
3	Tail	Tail Cement	GW-86	Viscosifier	0.10	%BWOB
3	Tail	Tail Cement	IntegraSeal PHENO	LostCirculation	0.50	lb/sk
3	Tail	Tail Cement	IntegraSeal POLI	LostCirculation	0.25	lb/sk
3	Tail	Tail Cement	S-8	StrengthRetgression	20.00	%BWOB
3	Tail	Tail Cement	XCem-1009	Extender	6.00	lb/sk
3	Tail	Tail Cement	XCem-311	Defoamer	0.30	%BWOB
3	Tail	Tail Cement	XCem-532	FluidLoss	0.40	%BWOB

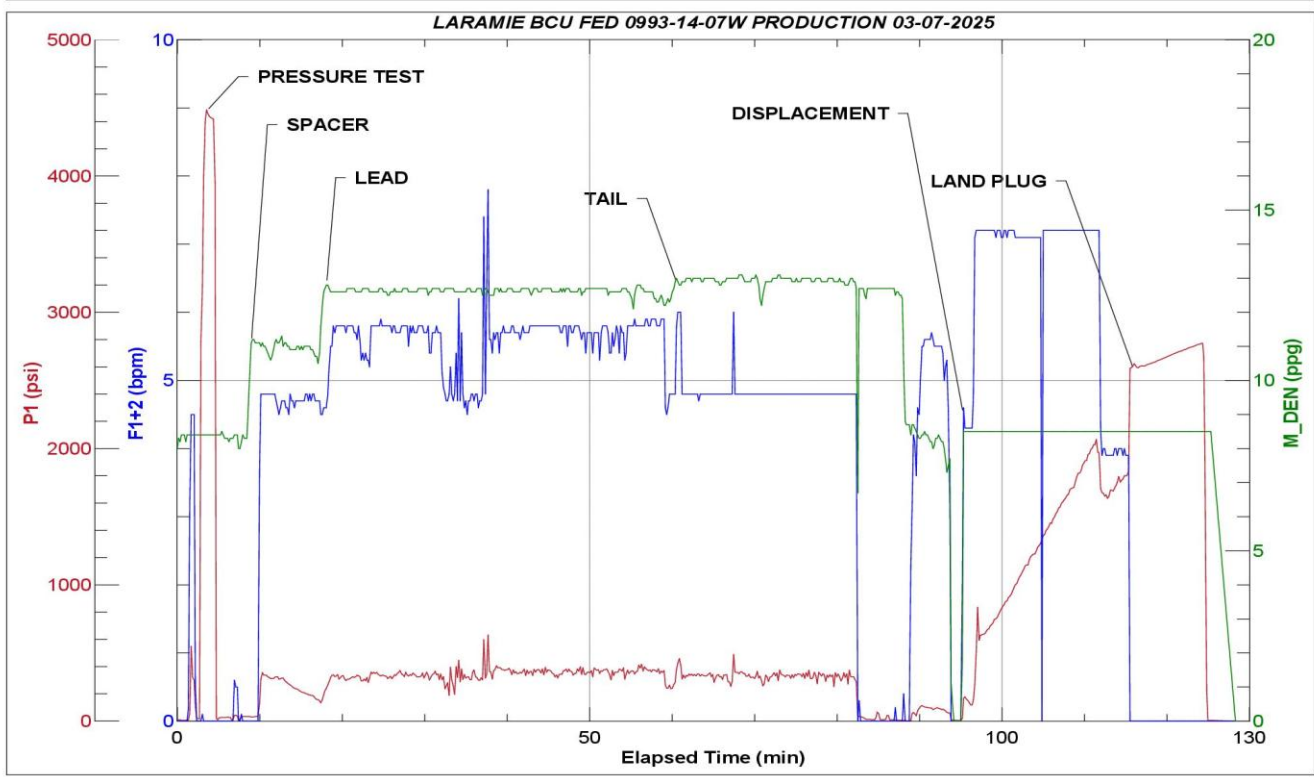
## Job Logs

Line	Event	Date (MM/DD/YY)	Time (HH:MM)	Density (lb/gal)	Pump Rate (bpm)	Pump Volume (bbls)	Pipe Pressure (psi)	Comment
1	Callout	3/7/2025	09:00					CALLOUT @ 09:00
2	Depart Location	3/7/2025	12:25					DEPART RCO YARD
3	Arrive On Location	3/7/2025	16:45					ARRIVE ON CUSTOMER LOCATION
4	Safety Meeting	3/7/2025	16:50					PRE RIG UP SAFETY MEETING
5	Rig Up Iron	3/7/2025	16:55					RIG IN IRON
6	Safety Meeting	3/7/2025	19:03					PRE JOB SAFETY MEETING
7	Start Job	3/7/2025	19:47					
8	Pressure Test Lines	3/7/2025	19:48	8.34	4.5	3	582	PRESSURE TEST LINES/ FILL LINES
9	Pump Spacer	3/7/2025	19:56	8.34	5	1	314	START 40 BBLS OF EZSPACER @ 11 PPG WITH SS-201
10	Pump Spacer	3/7/2025	20:03	8.34	5	40	155	END OF EZSPACER
11	Pump Lead Cement	3/7/2025	20:03	12.7	4.5	1	168	START 258 BBLS OF LEAD CEMENT @ 12.7 PPG (2.14,11.56) 678 SKS
12	Pump Lead Cement	3/7/2025	20:12	12.7	6	50	353	50 BBLS PUMED
13	Pump Lead Cement	3/7/2025	20:21	12.7	6	100	393	100 BBLS PUMPED
14	Pump Lead Cement	3/7/2025	20:30	12.7	6	150	364	150 BBLS PUMPED
15	Pump Lead Cement	3/7/2025	20:39	12.7	6	200	380	200 BBLS PUMPED
16	Pump Lead Cement	3/7/2025	20:46	12.7	4.5	258	248	END OF LEAD SLURRY
17	Pump Tail Cement	3/7/2025	20:46	13	5	1	273	START 104 BBLS OF TAIL CEMENT @ 13 PPG (2.05,10.30) 284 SKS
18	Pump Tail Cement	3/7/2025	20:57	13	5	50	293	50 BBLS PUMED
19	Pump Tail Cement	3/7/2025	21:08	13	5	104	361	END OF TAIL SLURRY
20	Shutdown	3/7/2025	21:08					SHUTDOWN/ WASH TO PIT
21	Drop Top Plug	3/7/2025	21:21					DROP TOP PLUG
22	Pump Displacement	3/7/2025	21:21	8.34	4	1	180	START 128 BBLS OF FRESH WATER DISPLACEMENT WITH RESCARE & BIOCID
23	Pump Displacement	3/7/2025	21:29	8.34	7	50	1141	50 BBLS PUMED
24	Pump Displacement	3/7/2025	21:36	8.34	7	100	1905	100 BBLS PUMPED
25	Pressure before slow	3/7/2025	21:38	8.34	7	118	2064	PRESSURE BEFORE SLOW @ 2064
26	Slow Pump Rate	3/7/2025	21:38	8.34	4	118	1634	SLOW RATE PRESSURE @ 1634
27	Final circulating pressure	3/7/2025	21:42	8.34	4	128	1794	FCP @ 1794
28	Land Plug	3/7/2025	21:42	8.34	4	128	2704	LAND PLUG @ 2704
29	Check Floats	3/7/2025	21:52					1 BBL BACK UPON FLOAT CHECK/ 25 BBLS OF SPACER TO SURFACE
30	End Job	3/7/2025	21:52					END OF CEMENTING SERVICES
31	Safety Meeting	3/7/2025	22:00					PRE RIG DOWN SAFEETY MEETING
32	Rig Down Iron	3/7/2025	22:05					RIG DOWN IRON
33	Depart Location	3/7/2025	23:45					DEPART CUSTOMER LOCATION

# Pump Diagrams



JobMaster Program Version 5.01C1  
Job Number: 94912  
Customer: LARAMIE  
Well Name: BCU FED 0993-14-07W



Job Start: Saturday, March 08, 2025