



---

# Laramie Energy

## SURFACE POST JOB REPORT

BCU FED #0993-14-07W 05-077-10610  
S:14 T:9S R:93W Mesa CO

CallSheet #: 94723  
Proposal #: 81629



**SURFACE Post Job Report**

**Attention:** Mr. Aaron Duncan | (406) 498-4526 | [aduncan@laramie-energy.com](mailto:aduncan@laramie-energy.com)

Laramie Energy

1700 Lincoln Street, Suite 3950 | Denver, CO 80203

---

Dear Mr. Aaron Duncan,

Thank you for the opportunity to provide cementing services on this well. American Cementing strives to achieve complete customer satisfaction. If you have any questions regarding the services or data provided, please contact American Cementing at any time.

Sincerely,

**Krystal Schell**

Field Engineer I | (719) 992-1830 | [krystal.schell@americacementing.com](mailto:krystal.schell@americacementing.com)

**Field Office**      28730 US-6, Rifle, CO 81650  
Phone: (970) 657-1187

## Job Details & Summary

### Geometry

Type	Function	OD (in)	ID (in)	Weight (lb/ft)	Thread	Top (ft)	Bottom (ft)	Excess (%)
Casing	Outer	16	15.562	36.95	n/a	0	90	0
Open Hole	Outer	n/a	11	n/a	n/a	90	1050	25
Open Hole	Outer	n/a	11	n/a	n/a	1050	1605	25
Casing	Inner	8.625	8.097	24	STC	0	1585	0

### Equipment / People

Unit Type	Unit	Power Unit	Employee #1
Cement Trailer Float	CTF-555	TRC-053	Michael Hutchinson
Light Duty Vehicles	LDV-167		Gerron McClure
Cement Pump Float	CPF-012	TRH-855	Joel Carrasco

### Timing

Event	Date/Time
ERTS	02/17/2025 00:30
Call Out	2/16/2025 19:30
Depart Facility	2/16/2025 22:00
On Location	2/17/2025 00:30
Rig Up Iron	2/17/2025 01:30
Job Started	2/17/2025 04:04
Job Completed	2/17/2025 05:22
Rig Down Iron	2/17/2025 05:50
Depart Location	2/17/2025 06:00

### General Job Information

Metrics	Value
Well Fluid Density	9 lb/gal
Well Fluid Type	WBM
Rig Circulation Vol	300 bbls
Rig Circulation Time	1 hours
Calculated Displacement	98.1 bbls
Actual Displacement	98 bbls
Total Spacer to Surface	20 bbls
Total CMT to Surface	13 bbls
Well Topped Out	No
Top Out Volume	N/A bbls

### Job Details

Metrics	Value
Flare Prior to Job	No
Flare Prior to Job	N/A units
Flare During Job	No
Flare During Job	N/A units
Flare at End of Job	No
Flare at End of Job	N/A units
Well Full Prior to Job	Yes
Well Fluid Density Into Well	9 lb/gal
Well Fluid Density Out of Well	9 lb/gal

### Job Details (cont.)

Metrics	Value
BHCT	81 °F
BHST	105 °F

### Water Analysis

Metrics	Value	Recommended
Water Source	Upright Rig Tank	
Temperature	68 °F	50-80 °F
pH Level	6	5.5-8.5
Chlorides	200 mg/L	0-3000 mg/L
Total Alkalinity	100	0-1000
Total Hardness	10 mg/L	0-500 mg/L
Carbonates	10 mg/L	0-100 mg/L
Sulfates	100 mg/L	0-1500 mg/L
Potassium	100 mg/L	0-3000 mg/L
Iron	10 mg/L	0-300 mg/L

## Circulation

Lost Circulation Experienced

No

## Job Execution Information

Fluid	Product	Function	Density (lb/gal)	Yield (ft <sup>3</sup> /sk)	Water Rq. (gal/sk)	Water Rq. (gal/bbl)	Volume (sks)	Volume (bbl)	Designed Top (ft)
1	Water	Flush	8.34			42.00		20.00	0
2	Lead Cement	Lead	12.30	2.31	13.17		161.00	66.21	0
3	Class G Tail	Tail	13.90	1.66	8.41		105.00	31.13	1050
4	Displacement	DisplacementFinal	8.34			42.00		98.00	0

## Job Fluid Details

Fluid	Type	Fluid	Product	Function	Conc.	Uom
2	Lead	Lead Cement	ASTM TYPE IL	Cement	100.00	%
2	Lead	Lead Cement	A-10	Accelerator	5.00	%BWOB
2	Lead	Lead Cement	A-2	Accelerator	3.00	lb/sk
2	Lead	Lead Cement	A-7P	Accelerator	2.00	lb/sk
2	Lead	Lead Cement	IntegraSeal POLI	LostCirculation	0.25	lb/sk
2	Lead	Lead Cement	STATIC FREE	Other	0.01	lb/sk
2	Lead	Lead Cement	XCem-311	Defoamer	0.30	%BWOB
3	Tail	Class G Tail	CLASS G	Cement	100.00	%
3	Tail	Class G Tail	A-10	Accelerator	5.00	%BWOB
3	Tail	Class G Tail	A-2	Accelerator	2.00	lb/sk
3	Tail	Class G Tail	A-7P	Accelerator	2.00	lb/sk
3	Tail	Class G Tail	XCem-311	Defoamer	0.30	%BWOB

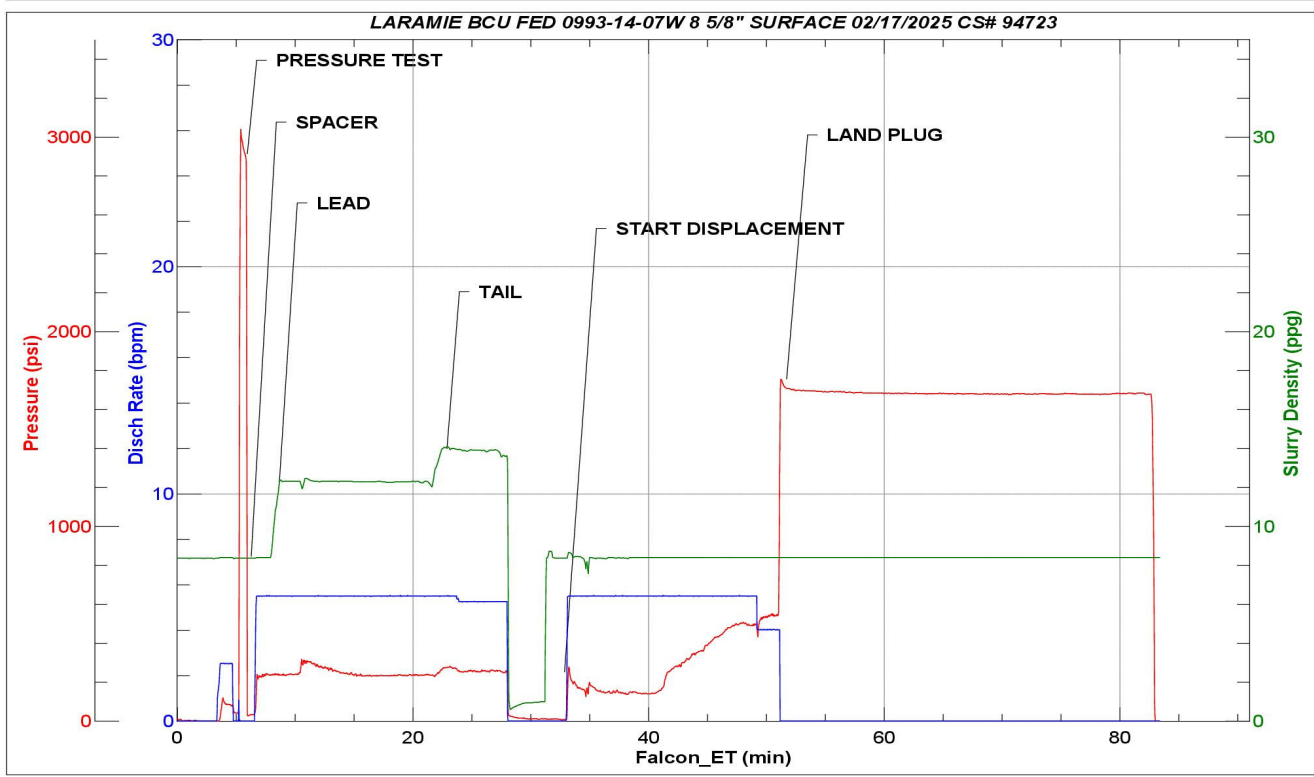
## Job Logs

Line	Event	Date (MM/DD/YY)	Time (HH:MM)	Density (lb/gal)	Pump Rate (bpm)	Pump Volume (bbls)	Pipe Pressure (psi)	Comment
1	ARRIVED ON LOCATION	2/17/2025	00:30					ARRIVED ON LOCATION PER CUSTOMER REQUEST 00:30 ON 02/17/2025
2	HAZARD ASSESMENT	2/17/2025	00:35					
3	SPOT EQUIPMENT	2/17/2025	00:40					
4	PRE RIG UP SAFETY MEETING	2/17/2025	00:45					
5	RIGGED UP	2/17/2025	01:30					
6	PRE JOB SAFETY MEETING	2/17/2025	03:30					
7	STAB HEAD	2/17/2025	03:45					
8	START JOB	2/17/2025	04:04					START JOB
9	PRESSURE TEST LINES 3000PSI	2/17/2025	04:06	8.34	1	1	3000	PRESSURE TEST LINES 3000 PSI
10	START 20 BBL FRESH WATER SPACER	2/17/2025	04:08	8.34	5	1	232	START 20 BBL FRESH WATER SPACER
11	END OF SPACER	2/17/2025	04:12	8.34	5	40	230	END OF FRESH WATER SPACER
12	START 66.2 BBL LEAD SLURRY @ 12.3	2/17/2025	04:12	12.3	5	1	220	START 66.2 BBL LEAD SLURRY @ 12.3 (2.31,13.17) 161 TOTAL SACKS
13	50 BBLS GONE ON LEAD SLURRY	2/17/2025	04:20	12.3	5	50	230	
14	END OF LEAD SLURRY	2/17/2025	04:24	12.3	5	66.2	230	END OF LEAD SLURRY
15	START 31 BBL TAIL SLURRY @ 13.9	2/17/2025	04:24	13.9	5	1	264	START 31 BBL TAIL SLURRY @ 13.9 ( 1.66,8.41) 105 SACKS TOTAL
16	END OF TAIL SLURRY	2/17/2025	04:29	13.9	4	31.04	140	END OF TAIL SLURRY
17	SHUTDOWN/ DROP TOP PLUG	2/17/2025	04:29					SHUTDOWN/ DROP TOP PLUG
18	START 98.1 BBL FRESH WATER DISPLACEMENT	2/17/2025	04:34	8.34	4	1	169	START 98.1 BBL FRESH WATER DISPLACEMENT
19	50 BBLS GONE ON DISPLACEMENT	2/17/2025	04:43	8.34	5	50	271	
20	PRESSURE BEFORE SLOWING RATE	2/17/2025	04:50	8.34	5	87	529	PRESSURE BEFORE SLOWING RATE
21	SLOW RATE PRESSURE	2/17/2025	04:50	8.34	5	87	505	SLOW RATE PRESSURE @ 4BPM
22	FINAL LIFT PRESSURE TO LAND PLUG	2/17/2025	04:52	8.34	4	98.3	549	FINAL LIFT PRESSUR TO LAND PLUG
23	LAND PLUG	2/17/2025	04:52	8.34	4	98.3	1710	LAND PLUG
24	30 MINUTE CASING TEST	2/17/2025	04:53	8.34	1	1	1707	30 MINUTE CASING TEST
25	END OF TEST	2/17/2025	05:23	8.34		1	1685	END OF 30 MINUTE CASING TEST
26	CHECK FLOAT	2/17/2025	05:25					RETURNED 1 BBL BACK UPON FLOAT CHECK
27	END OF CEMENTING SERVICES	2/17/2025	05:25					CIRCULATED 13 BBLS OF CEMENT SLURRY TO SURFACE
28	POST JOB SAFETY MEETING	2/17/2025	05:30					POST JOB SAFETY MEETING
29	RIGGED DOWN	2/17/2025	05:50					
30	PRE CONVOY SAFETY MEETING	2/17/2025	05:55					
31	LOCATION DEPARTURE	2/17/2025	06:00					
32	END OF JOB	2/17/2025	06:00					END OF JOB

# Pump Diagrams



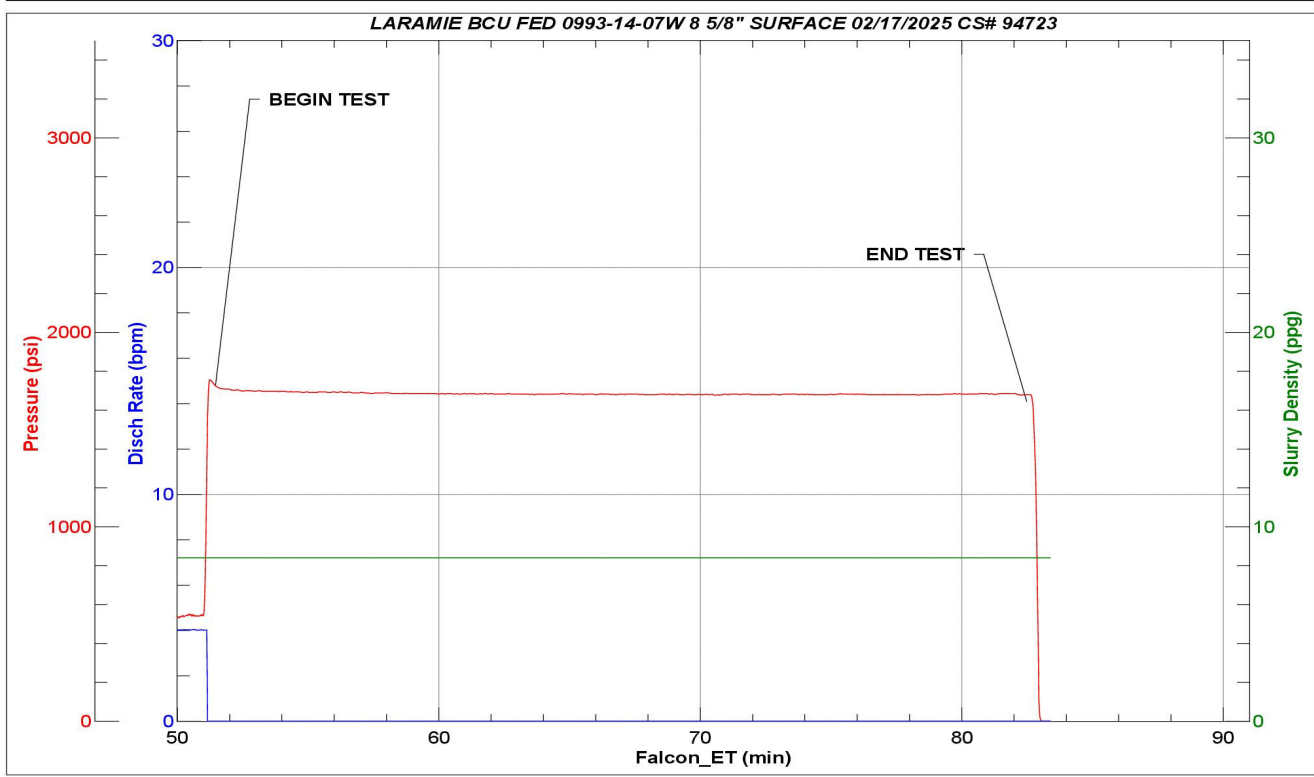
JobMaster Program Version 5.01C1  
Job Number: 94723  
Customer: LARAMIE  
Well Name: BCU FED 0993-14 07



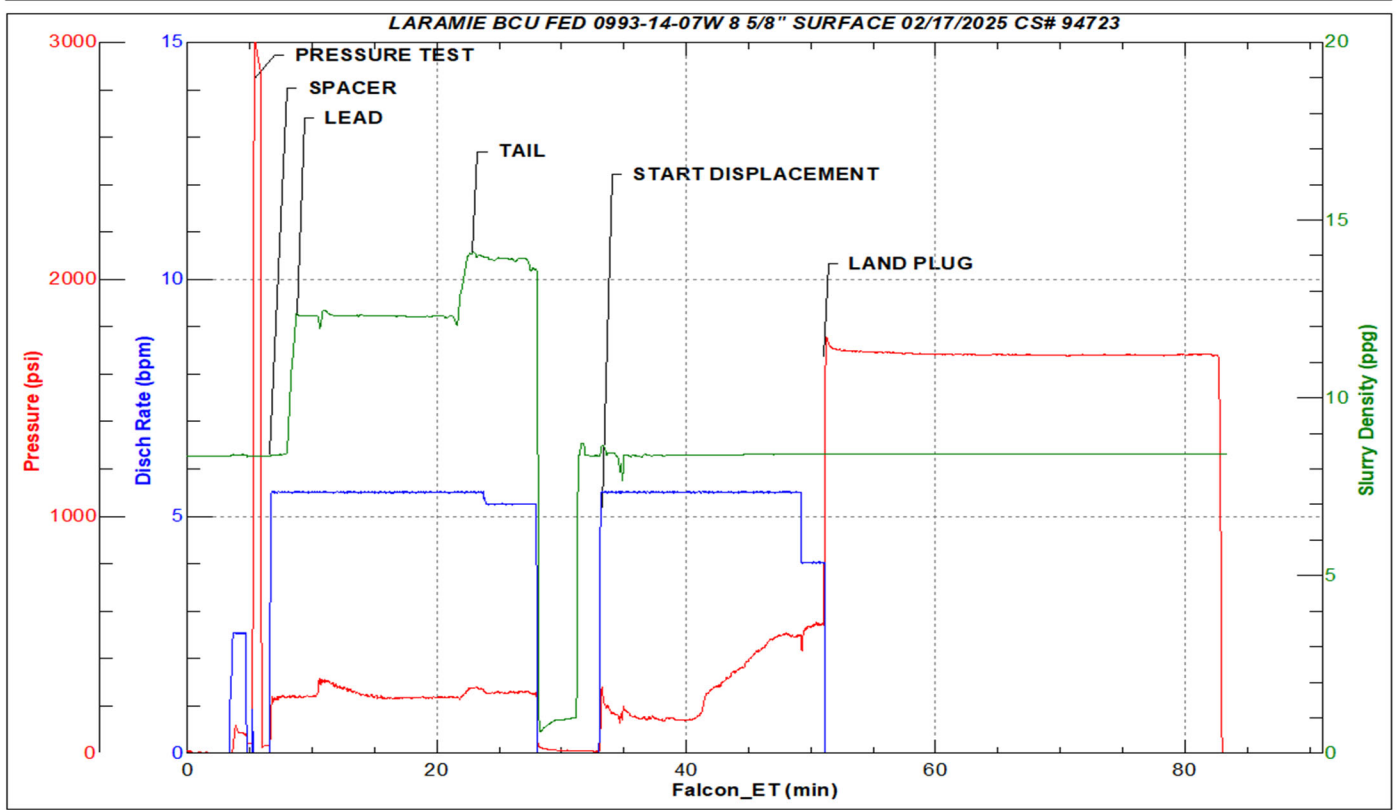
Job Start: Monday, February 17, 2025



JobMaster Program Version 5.01C1  
Job Number: 94723  
Customer: LARAMIE  
Well Name: BCU FED 0993-14 07



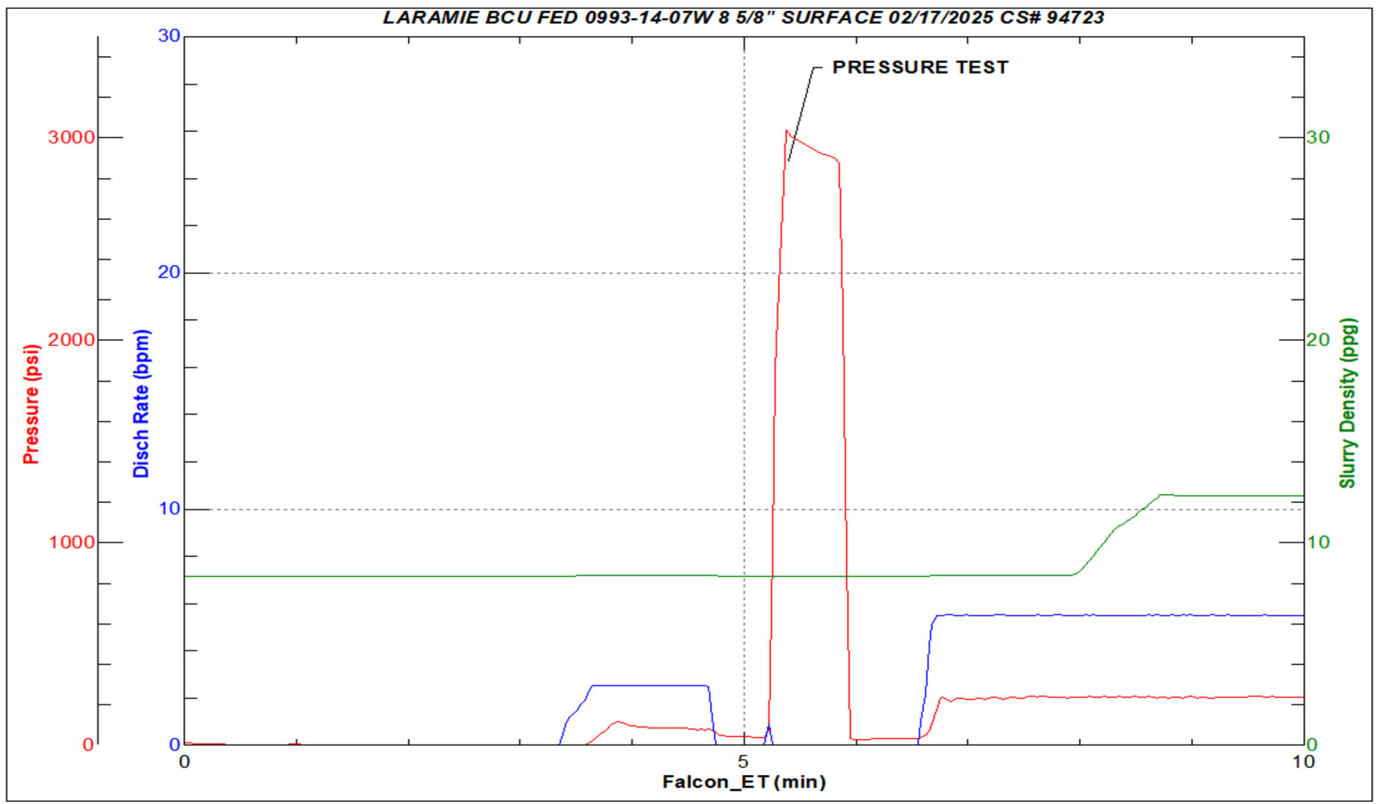
Job Start: Monday, February 17, 2025



Job Start: Monday, February 17, 2025



JobMaster Program Version 5.01C1  
Job Number: 94723  
Customer: LARAMIE  
Well Name: BCU FED 0993-14 07



Job Start: Monday, February 17, 2025