

Project: Mesa County, CO
 Site: BCU 14L Pad
 Well: Laramie BCU Fed 0993-14-07W
 Wellbore: OH
 Design: Design #3
 Latitude: 39.272688
 Longitude: -107.744861
 Ground Level: 7394.0
 RKB=30' @ 7424.0usft (H&P #542)

PROJECT Details: Mesa County, CO
 Geodetic System: US State Plane 1983
 Datum: North American Datum 1983
 Ellipsoid: GRS 1980
 Zone: Colorado Central Zone
 System Datum: Mean Sea Level

REFERENCE INFORMATION
 Vertical (TVD) Reference: RKB=30' @ 7424.0usft (H&P #542)
 Section (VS) Reference: Slot - A-7(0.0N, 0.0E)
 Measured Depth Reference: RKB=30' @ 7424.0usft (H&P #542)
 Calculation Method: Minimum Curvature

FORMATION TOP DETAILS

TVDPath	MDPath	Formation
2644.8	2793.7	Wasatch 'G' Sand
3232.8	3429.8	Fort Union
3765.8	4007.5	Lower Wasatch
4656.8	4970.3	Ohio Creek
5145.8	5499.3	Williams Fork
6124.8	6509.6	TOG
6927.8	7312.6	Cameo
7655.8	8040.6	Base Cameo Coal
7674.8	8059.6	Rollins

SECTION DETAILS

MD	Inc	Azi	TVD	+N/-S	+E/-W	Dleg	TFace	VSect	Annotation
1521.0	23.91	11.87	1469.4	324.3	83.6	0.00	0.00	334.9	Last MWD Survey
1591.0	23.91	11.87	1533.4	352.0	89.5	0.00	0.00	363.2	Drop 2.5" /100'
1659.9	22.42	14.09	1596.8	378.5	95.5	2.50	150.61	390.3	EOD @ 22.42° Inc. / 14.09° Azm
5612.8	22.42	14.09	5250.8	1841.0	462.5	0.00	0.00	1898.2	Drop 2.5" /100'
6509.8	0.00	0.00	6125.0	2009.0	504.7	2.50	180.00	2071.5	EOD @ Vertical
8259.8	0.00	0.00	7875.0	2009.0	504.7	0.00	0.00	2071.5	TD @ 8259.8' MD / 7875.0' TVD

Azimuths to True North
 Magnetic North: 8.53°

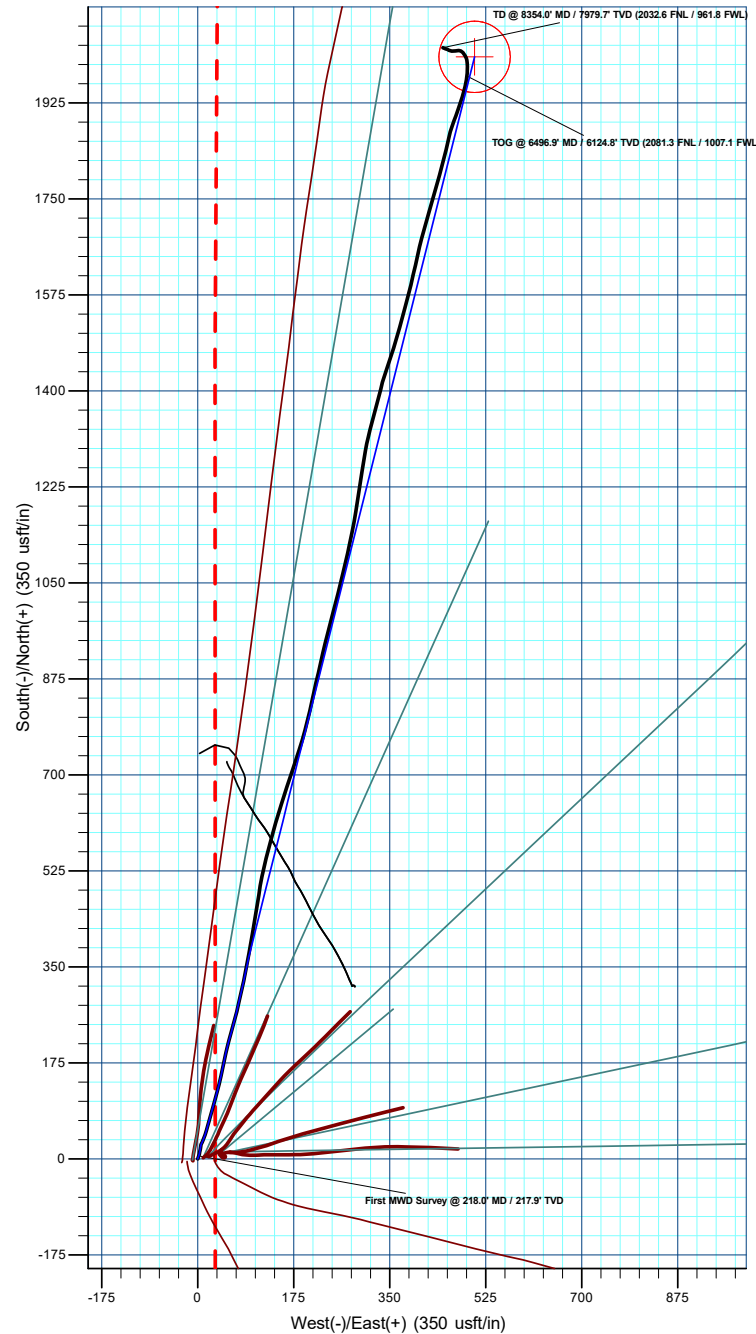
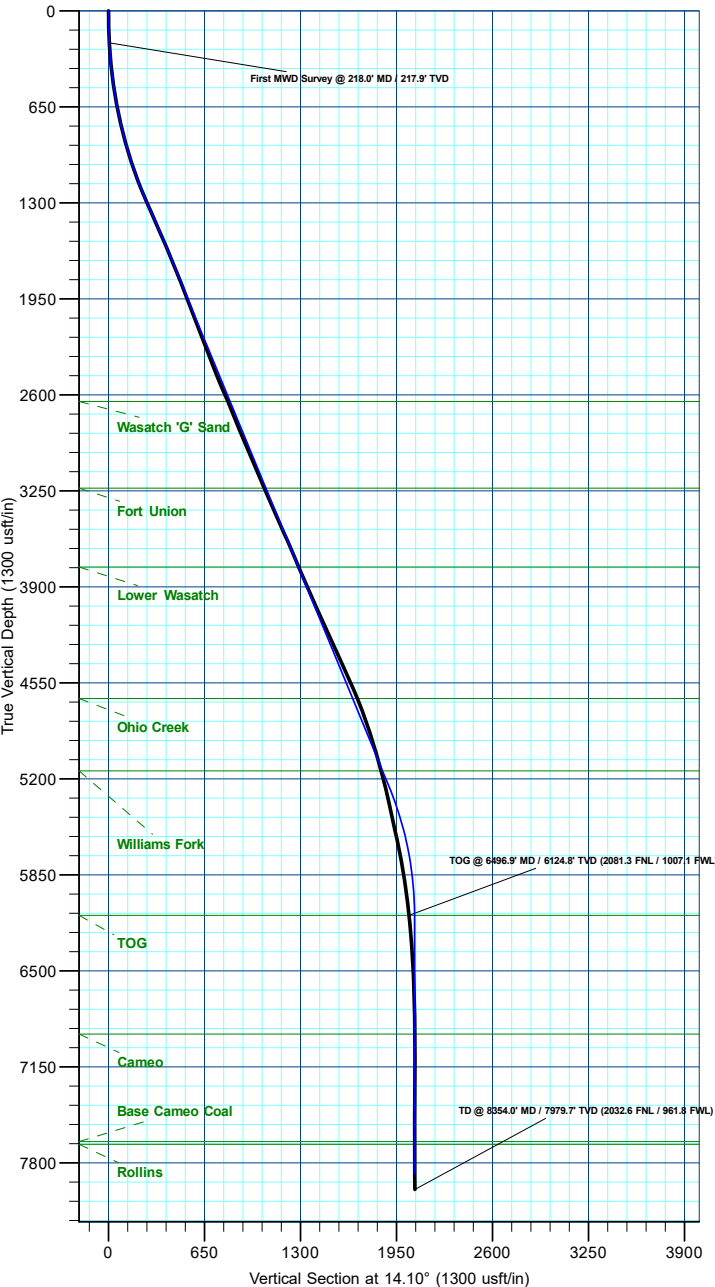
Magnetic Field
 Strength: 50641.3nT
 Dip Angle: 65.07°
 Date: 2/15/2025
 Model: HDGM2025

DESIGN TARGET DETAILS

Name	TVD	+N/-S	+E/-W	Northing	Easting	Latitude	Longitude
BHL - 14-07W	7875.0	2009.0	504.7	1534057.66	2365108.17	39.278204	-107.743078

WELL DETAILS: Laramie BCU Fed 0993-14-07W

+N/-S	+E/-W	Ground Level : 7394.0	Northing	Easting	Latitude	Longitude	A-7
0.0	0.0		1532061.70	2364553.97	39.272688	-107.744861	



Plan: Design #3 (Laramie BCU Fed 0993-14-07W/OH)
 Created By: Will Jircik Date: 3:29, March 07 2025