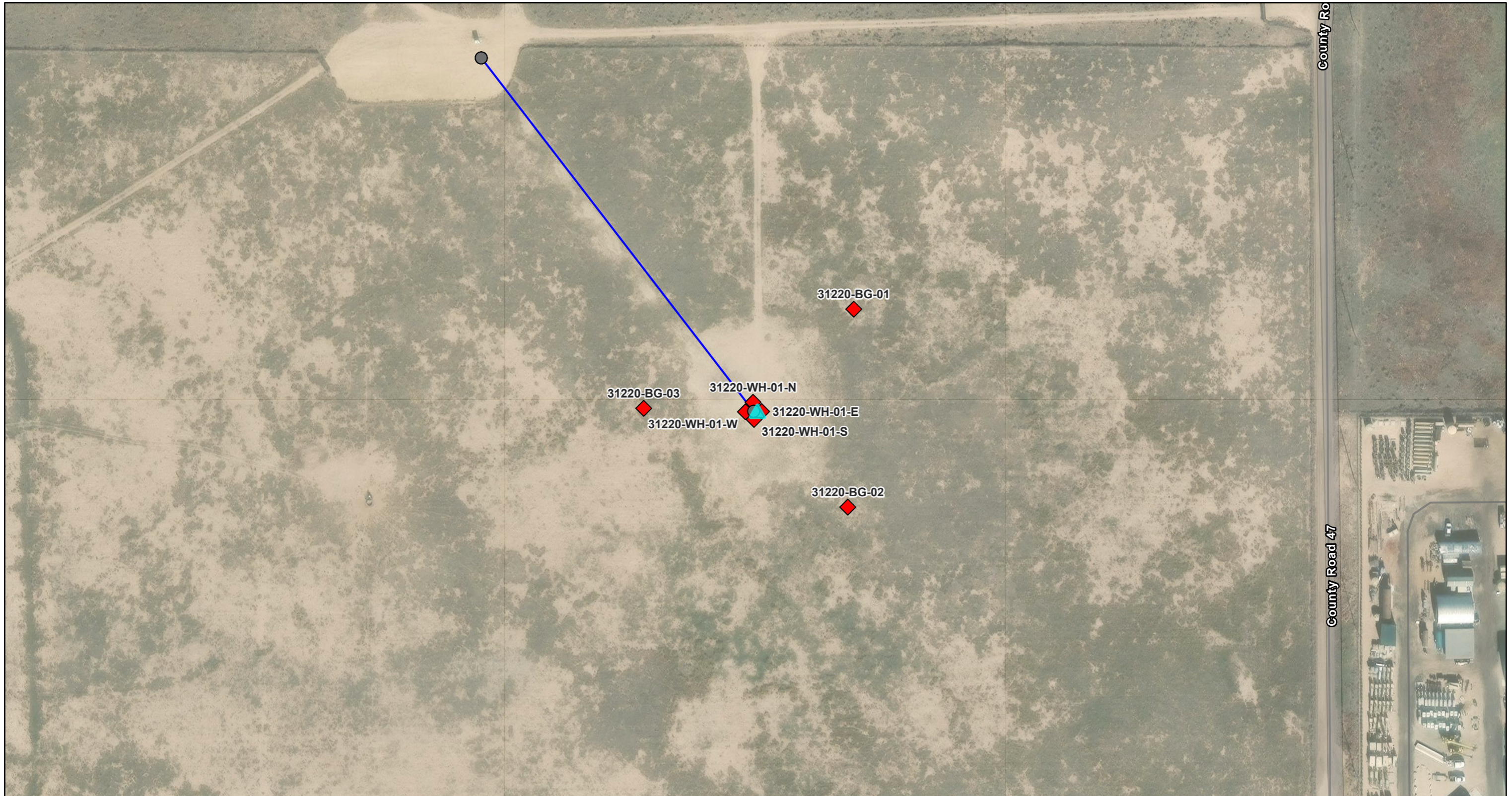


# Proposed Soil Sample Map



5/5/2025, 5:03:04 PM

1:1,571

Remediation (ECMC Form 27)

Remediation Tracking (Editable)

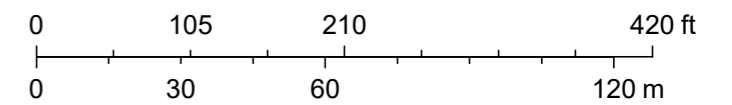
Production Line (Editable)

Low Resolution 15m Imagery

High Resolution 60cm Imagery

High Resolution 30cm Imagery

Citations



- Highest Priority
- High Priority
- Lowest Priority

- ▲ Media Not Defined
- ▲ Sample Location (Editable)
- ◆ Proposed Location

- Preliminary (QA/QC'd From Site Map)
- Access Roads (Editable)
- Unknown Status
- World Imagery



Sources: Esri, TomTom, Garmin, FAO, NOAA, USGS, © OpenStreetMap contributors, and the GIS User Community, Maxar