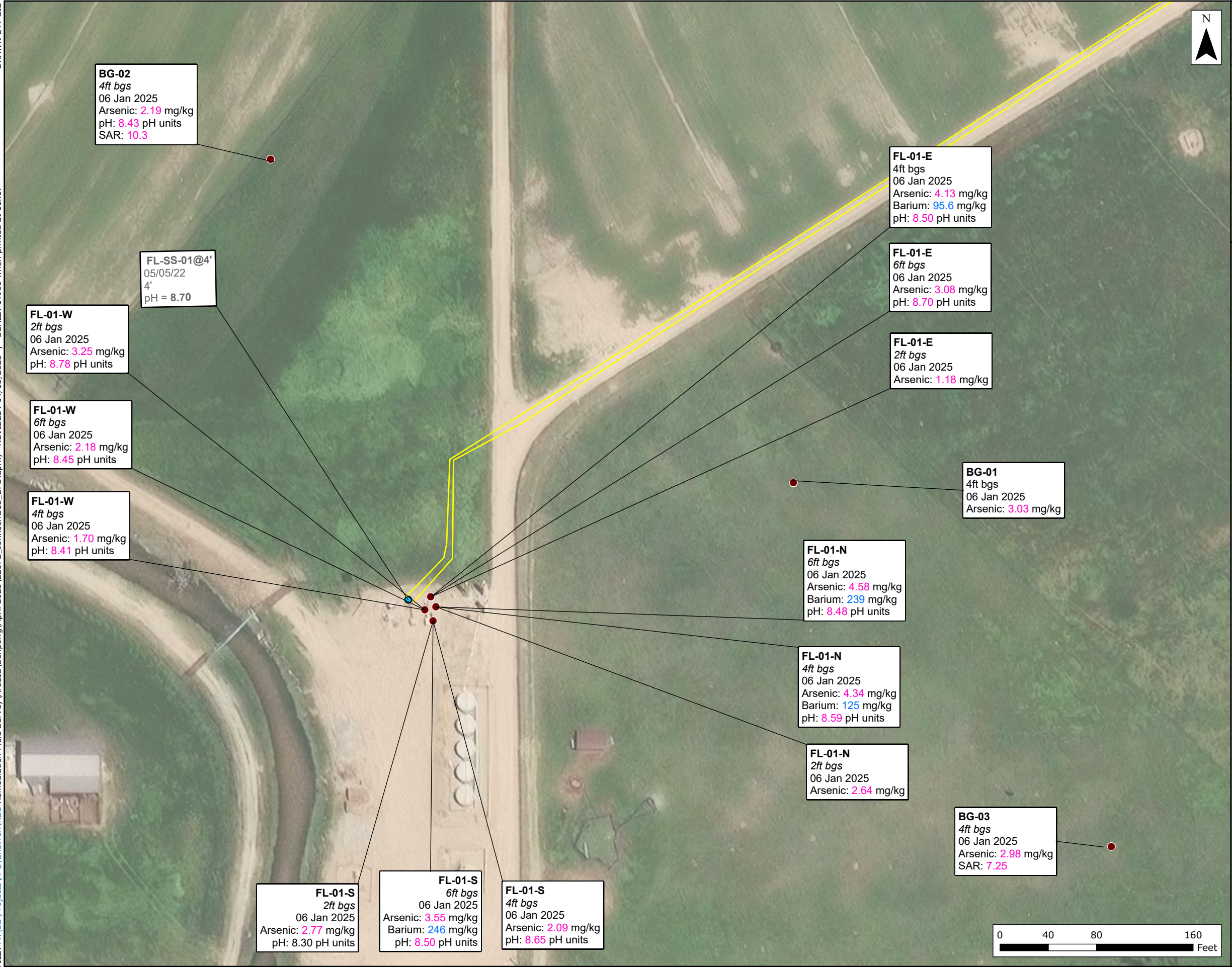


DRAWN BY: GIS

FILE: M:\US\Projects\A-C\Chevron\RBURemediationFieldSurvey\ArcGIS\Scripting\April 2025\22672\_JohnsonG13\_27D.aprx, REVISED: 04/15/2025, SCALE: 1:960 when printed at 11x17



**Legend**

- Soil Sample Location
- Previous Sample Location
- Approximate Flowline
- Former Wellhead
- Associated Separator

**Notes:**  
 Results are in milligrams per kilogram (mg/kg) unless otherwise noted.  
 Pink values exceed the ECMC table 915-1 Limits (Residential SSL).  
 Blue values exceed the ECMC table 915-1 Limits (Protection of Groundwater SSL).  
 \*\* Achievable practical quantitative limits for hexavalent Chromium (Cr VI) in soils is in the range of 0.1 to 1 mg/kg.

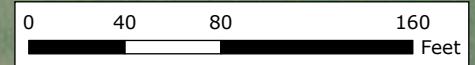
Samples collected on 10 December 2024.  
 Gray values = previous samples collected by Eagle.

Analytical results below laboratory detection limits or within compliance of ECMC Table 915-1 not shown.

ECMC Table 915-1 GSSLs Listed  
 Arsenic = 0.29  
 Barium = 82  
 pH = 6-8.3 (RSSLs)  
 SAR = 6

ECMC = Energy and Carbon Management Commission  
 ft bgs = feet below ground surface  
 SAR = Sodium Adsorption Ratio  
 SSL = Soil Screening Levels

**Figure 1**  
**Exceedances in Soil Samples**  
**Johnson G #13-27D**  
**REM# 22672**  
**Operator: 100322**  
 RBURemediationFieldSurvey  
 Chevron  
 Weld County, CO



Source: Esri - World Aerial Map; NAD 1983 2011 StatePlane Colorado North FIPS 0501 Ft US