

BLEDSE 7-6-5-44

API # 125-09486 Loc. # 336843

FIELD NAME BALLYNEAL - #1970

Spud Date 9/17/2005

Basin DENVER - JULESBURG

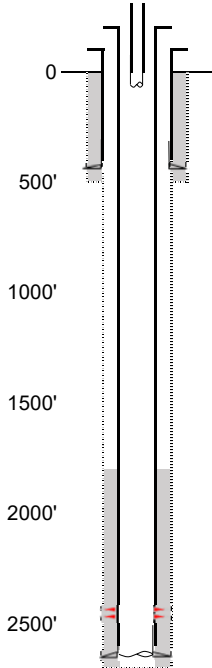
Location SWNE 6 5N 44W 6

Elevation GL (ft) 3751

Elevation KB (ft) 3757

TD (ft) 2650

PBDT (ft) 2589

Formation Tops**EXISTING**Existing Casing and Cement Coverage

SURF: Size: 7", Hole Size: 9.875 in.
 Depth: 430 ft., Weight: UNK
 Cement: 182 sx, Top: 0 ft., Method: Vis

Deepest DWR w/in 1 mi. = 260'

1ST, Size: 4.5", Hole Size: 6.25"
 Depth: 2631', Weight: UNK
 Cement: 75 sx, TOC: 1810', Method: CBL

tubing UNK
 TOC = 1810' (CBL)
 NBRR Perfs 2442' - 2483'
 PBDT (ft) 2589'
 TD (ft) 2650'

NIOBRARA - 2442'

PROPOSED

Depth

Plug Placement

Perf at 100', pump 20
 sx through perfs. Leave
 10 sx inside to surface.
 Perf at 480', pump 20
 sx through perfs. Leave
 10 sx inside. Tag above
 380' reqd.
 Perf at 1200', pump 20
 sx through perfs. Leave
 10 sx inside. Tag above
 1100' reqd.

CBL Required

VERIFY TOC w/ CBL

Pressure test casing
 after setting CIBP.

CIBP w/ 2 sx @ 2367'
 (75' above top perf).

NIOBRARA - 2442'