

Storm Water Management and Erosion control
Location Name: QB ENERGY OPERATING LLC KELL 35-3 (C35) Pad
Location #: 335359



Location Overview: Location is within High Priority/Density/Black Bear Habitat areas & in close proximity to NSO Habitat area. Location is within Rule 411a Surface Water External Buffer. Location is approximately 188 yards from Dry Creek.

Section/Township/Range: 35 6S93W

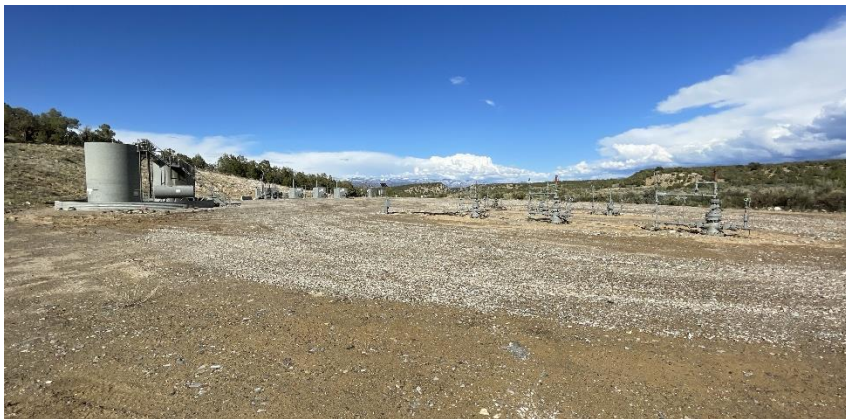
Storm water Management and Erosion control
Location Name: QB ENERGY OPERATING LLC KELL 35-3 (C35) Pad
Location #: 335359



North West corner of location.



North East corner of location.



South West corner of location.

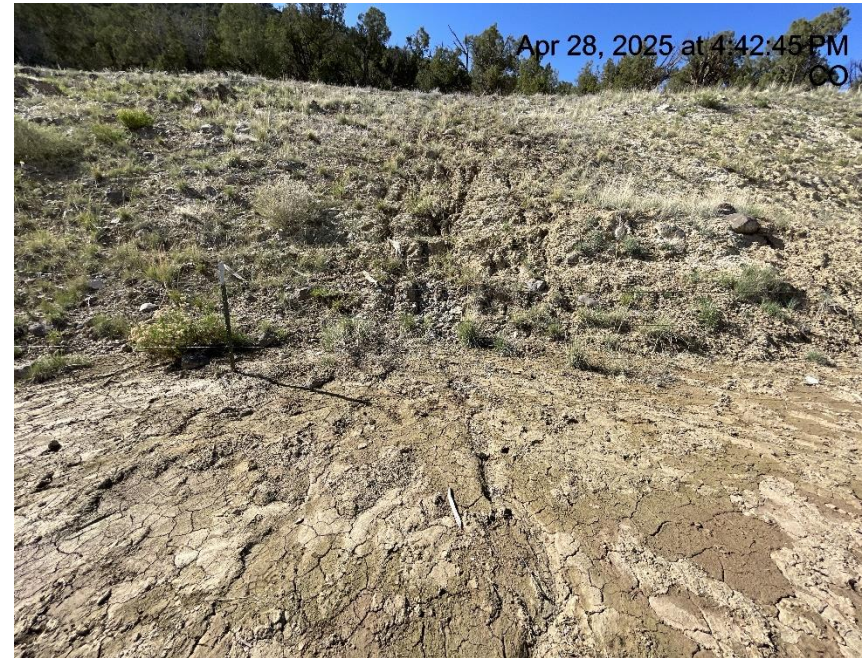


South East corner of location.

Storm water Management and Erosion control
Location Name: QB ENERGY OPERATING LLC KELL 35-3 (C35) Pad
Location #: 335359



**Photo # 7019 Erosion & transport of sediment on cutslope
/sediment migrating onto location/insufficient BMP's**



**Photo # 7020 Erosion & transport of sediment on cutslope
/sediment migrating onto location/insufficient BMP's**

Storm water Management and Erosion control
Location Name: QB ENERGY OPERATING LLC KELL 35-3 (C35) Pad
Location #: 335359



**Photo # 7021 Erosion & transport of sediment on cutslope
/sediment migrating onto location/insufficient BMP's**

**Photo # 7022 Erosion & transport of sediment on cutslope
/sediment migrating onto location/insufficient BMP's**

Storm water Management and Erosion control
Location Name: QB ENERGY OPERATING LLC KELL 35-3 (C35) Pad
Location #: 335359



**Photo # 7023 Erosion & transport of sediment on cutslope
/sediment migrating onto location/insufficient BMP's**

**Photo # 7024 Erosion & transport of sediment on cutslope
/sediment migrating onto location/insufficient BMP's**