

TABLE 1
FIELD DATA SUMMARY TABLE
NOBLE 100322
GRANT ARENS G 22-22D, 03, WELD COUNTY, COLORADO
REM # 30388

Sample ID	Sample Date	Depth (ft)	GPS Data Latitude/Longitude		PDOP Value	VOC Concentration (ppm)
SS-01 2Ft	02/10/2025	2	40.29815	-104.64014	0.90	135.0

1. Global Positioning System (GPS) data is provided in decimal degrees using North American Datum (NAD) 83 UTMZone 13 North.

2. Volatile organic compound (VOC) concentrations are measured in the field using a photoionization detector (PID).

PDOP = Position Dilution of Precision

ppm = Parts per million

in. = Inches

ft. = Feet

bgs = Below ground surface

TABLE 2
SUMMARY OF VOLATILE ORGANIC SOIL CHEMISTRY DATA
NOBLE 100322
GRANT ARENS G 22-22D, 03, WELD COUNTY, COLORADO
REM # 30388

Sample ID	Sample Date	Depth (ft)	Benzene (mg/kg)	Toluene (mg/kg)	Ethyl-Benzene (mg/kg)	Xylenes (mg/kg)	1,2,4-Trimethyl-Benzene (mg/kg)	1,3,5-Trimethyl-Benzene (mg/kg)	Naphthalene (mg/kg)	TPH (mg/kg)	TPH GRO (mg/kg)	TPH DRO (mg/kg)	TPH ORO (mg/kg)
ECMC Table 915-1 Limits (Residential SSL)			1.2	490	5.8	58	30	27	2	500	500**		
ECMC Table 915-1 Limits (Protection of Groundwater SSL)			0.0026	0.69	0.78	9.9	0.0081	0.0087	0.0038	500	500**		
SS-01 2Ft	02/10/2025	2	<0.0020	<0.0050	<0.0050	<0.010	0.0084	<0.0050	0.011	<500	<0.50	<50	<50

1. Bold values exceed the ECMC Table 915-1 limit(s)
 2. Red & blue highlighted soil analytical values indicate an exceedance of the referenced soil screening level (SSL)
 3. * Indicates laboratory minimum detection limit in excess of SSL
 4. ** Summation of GRO+DRO+ORO must be less than 500 mg/kg
- (<) = Analytical result is less than the indicated laboratory reporting limit.
TPH-GRO = Total petroleum hydrocarbons - gasoline range organics
TPH-DRO = Total petroleum hydrocarbons - diesel range organics
TPH-ORO = Total petroleum hydrocarbons - oil range organics
mg/kg = Milligrams per kilogram
ft. = Feet
bgs = Below ground surface
NA = Not analyzed

TABLE 3
SUMMARY OF POLYCYCLIC AROMATIC HYDROCARBON SOIL CHEMISTRY DATA
NOBLE 100322
GRANT ARENS G 22-22D, 03, WELD COUNTY, COLORADO
REM # 30388

Sample ID	Sample Date	Depth (ft)	Acenaphthene (mg/kg)	Anthracene (mg/kg)	Benzo (a) Anthracene (mg/kg)	Benzo (a) Pyrene (mg/kg)	Benzo (b) Fluoranthene (mg/kg)	Benzo (k) Fluoranthene (mg/kg)	Chrysene (mg/kg)	Dibenzo (a,h) Anthracene (mg/kg)	Fluoranthene (mg/kg)	Fluorene (mg/kg)	Indeno (1,2,3-cd) Pyrene (mg/kg)	Pyrene (mg/kg)	1-Methyl - Naphthalene (mg/kg)	2-Methyl- Naphthalene (mg/kg)
ECMC Table 915-1 Limits (Residential SSL)			360	1800	1.1	0.11	1.1	11	110	0.11	240	240	1.1	180	18	24
ECMC Table 915-1 Limits (Protection of Groundwater SSL)			0.55	5.8	0.011	0.24	0.3	2.9	9	0.096	8.9	0.54	0.98	1.3	0.006	0.019
SS-01 2Ft	02/10/2025	2	<0.00500	<0.00500	<0.00500	<0.00500	<0.00500	<0.00500	<0.00500	<0.00500	0.00695	<0.00500	<0.00500	0.00893	0.00796	0.015

1. Bold values exceed the ECMC Table 915-1 limit(s)

2. Red & blue highlighted soil analytical values indicate an exceedance of the referenced soil screening level (SSL)

3. * Indicates laboratory minimum detection limit in excess of SSL

4. ** Summation of GRO+DRO+ORO must be less than 500 mg/kg

(<) = Analytical result is less than the indicated laboratory reporting limit.

TPH-GRO = Total petroleum hydrocarbons - gasoline range organics

TPH-DRO = Total petroleum hydrocarbons - diesel range organics

TPH-ORO = Total petroleum hydrocarbons - oil range organics

mg/kg = Milligrams per kilogram

ft. = Feet

bgs = Below ground surface

NA - Not analyzed

TABLE 4
SUMMARY OF SOIL SUITABILITY FOR RECLAMATION
NOBLE 100322
GRANT ARENS G 22-22D, 03, WELD COUNTY, COLORADO
REM # 30388

Sample ID	Sample Date	Depth (ft)	pH (Standard Units)	EC (mmhos/cm)	SAR (Standard Units)	Boron (mg/L)
ECMC Table 915-1 Soil Suitability Limits			6 - 8.3	4	6	2
SS-01 2Ft	02/10/2025	2	8	1.14	2.03	<2.00

1. **Bold** faced values exceed the ECMC Table 915-1 limit(s), but are within background concentrations.

2. **Bold** faced values exceed the ECMC Table 915-1 limit(s) and native background concentrations.

3. Brown highlighted soil analytical values indicate a regulatory exceedance.

NA - Not analyzed/Not applicable

TABLE 5
SUMMARY OF METALS IN SOIL CHEMISTRY DATA
NOBLE 100322
GRANT ARENS G 22-22D, 03, WELD COUNTY, COLORADO
REM # 30388

Sample ID	Sample Date	Depth (ft)	Arsenic (mg/kg)	Barium (mg/kg)	Cadmium (mg/kg)	Chromium (VI) (mg/kg)	Copper (mg/kg)	Lead (mg/kg)	Nickel (mg/kg)	Selenium (mg/kg)	Silver (mg/kg)	Zinc (mg/kg)
ECMC Table 915-1 Limits (Residential SSL)			0.68	15000	71	0.3	3100	400	1500	390	390	23000
ECMC Table 915-1 Limits (Protection of Groundwater SSL)			0.29	82	0.38	0.00067	46	14	26	0.26	0.8	370
SS-01 2Ft	02/10/2025		3.07	91.1	0.534	<0.30	10.8	23	5.65	<0.260	0.172	47.8

1. **Bold** faced values exceed the ECMC Table 915-1 limit(s), but are within 1.25x background concentrations.
2. **Bold** faced values exceed the ECMC Table 915-1 limit(s) and native background concentrations.
3. Red & blue highlighted soil analytical values indicate an exceedance of the referenced soil screening level (SSL).
4. Non-detect background results accounted for in the highest background concentration by using the reporting limit.

ECMC = Energy & Carbon Management Commission

(<) = Analytical result is less than the indicated laboratory reporting limit.

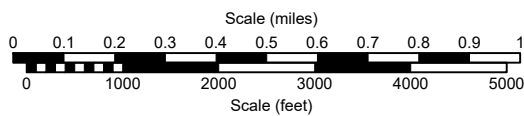
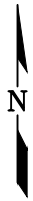
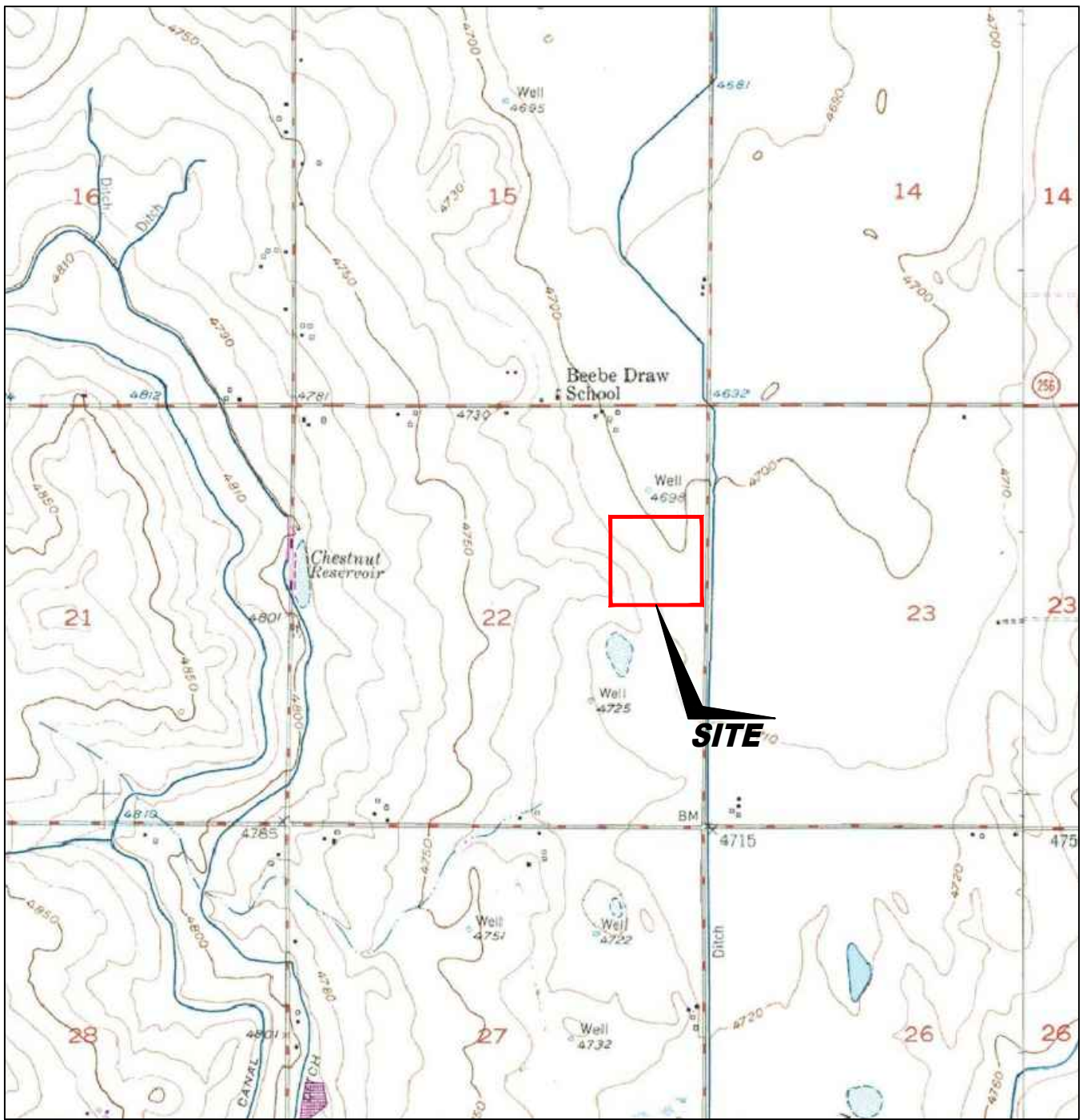
mg/kg = Milligrams per kilogram

ft. = Feet

bgs = Below ground surface

* Indicates laboratory minimum detection limit in excess of SSL

NA - Not analyzed/Not applicable



USGS 7.5 MINUTE SERIES (TOPOGRAPHIC)

Figure 1
SITE LOCATION MAP
NOBLE ENERGY INC ~ ARENS 02

SESE Sec. 22, T4N, R65W, 6th PM
 Weld County, Colorado
 40.299750°, -104.642230°


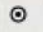
Project # C023-271	API #	Facility # 322598	
Date 5/22/24	Remediation # 30388	Filename 23271T	

Grant Arens G 22-22D, 03

SENE Sec. 22, T4N, R65W
40.298158, -104.640128
FAC ID: 322598

Imagery Date: 6/2021 (Prior to Facility Decommissioning)

Legend

-  Former Flowline
-  Impacted Sample Location

CSS-01 2 Ft

45





Description:

1 - Grant Arens G 22-22D, 03 reclamation historical release, stained, odor



Description:

2 - Grant Arens G 22-22D, 03 reclamation historical release, surface soil stockpiled in the background