

Robert L Bayless Producer LLC
Weaver Ridge 14 Well Pad
Location #465575

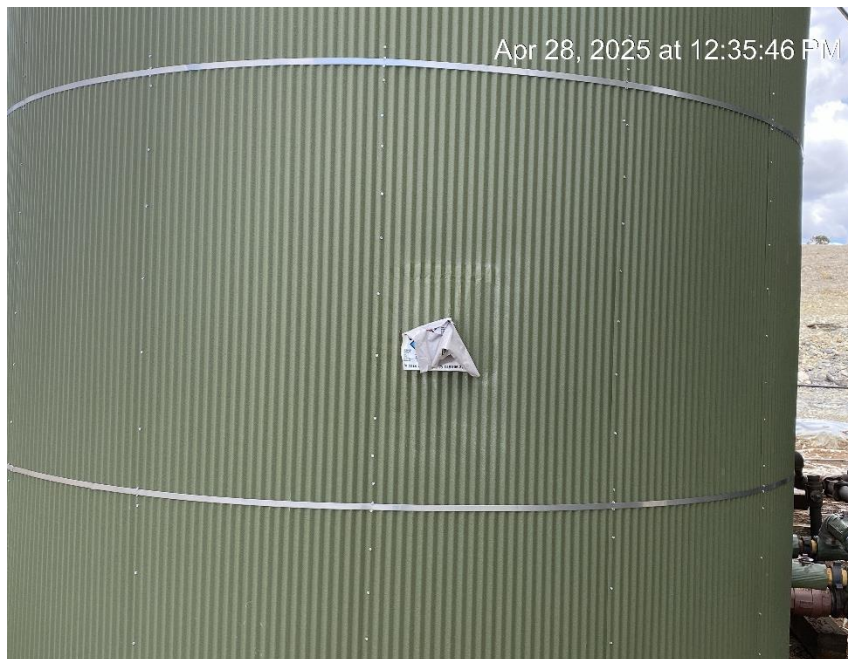


Debris



Containment full

**Robert L Bayless Producer LLC
Weaver Ridge 14 Well Pad
Location #465575**



Damaged label on production tank



Oily waste

Robert L Bayless Producer LLC
Weaver Ridge 14 Well Pad
Location #465575



Unlabeled container



No Bradenhead access

**Robert L Bayless Producer LLC
Weaver Ridge 14 Well Pad
Location #465575**



Unlabeled container



Debris

**Robert L Bayless Producer LLC
Weaver Ridge 14 Well Pad
Location #465575**



Debris



Unmarked anchor

**Robert L Bayless Producer LLC
Weaver Ridge 14 Well Pad
Location #465575**



Oily waste

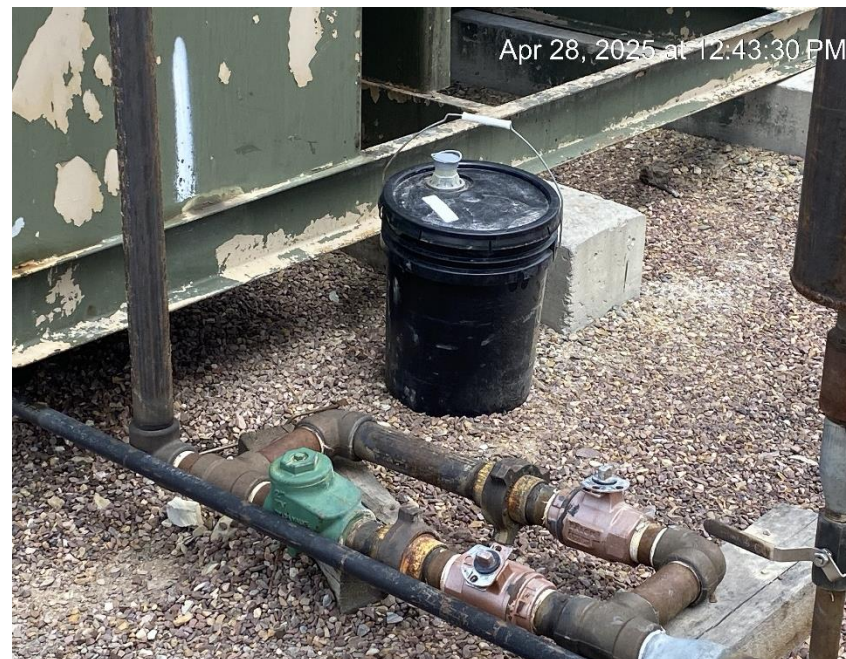


Oily waste

**Robert L Bayless Producer LLC
Weaver Ridge 14 Well Pad
Location #465575**



New soil over stained soil



Debris

**Robert L Bayless Producer LLC
Weaver Ridge 14 Well Pad
Location #465575**



Debris



Oily waste material in drilling pit from previous inspections

**Robert L Bayless Producer LLC
Weaver Ridge 14 Well Pad
Location #465575**



Oil contaminated material from tank battery in drilling pit



Oil contaminated material from tank battery in drilling pit

**Robert L Bayless Producer LLC
Weaver Ridge 14 Well Pad
Location #465575**



Oil contaminated material from tank battery in drilling pit



Oil contaminated material removed from tank battery

**Robert L Bayless Producer LLC
Weaver Ridge 14 Well Pad
Location #465575**



Oil contaminated material removed from tank battery



Location from Northeast entrance

**Robert L Bayless Producer LLC
Weaver Ridge 14 Well Pad
Location #465575**



Location from Northwest corner



Location from Southwest corner