



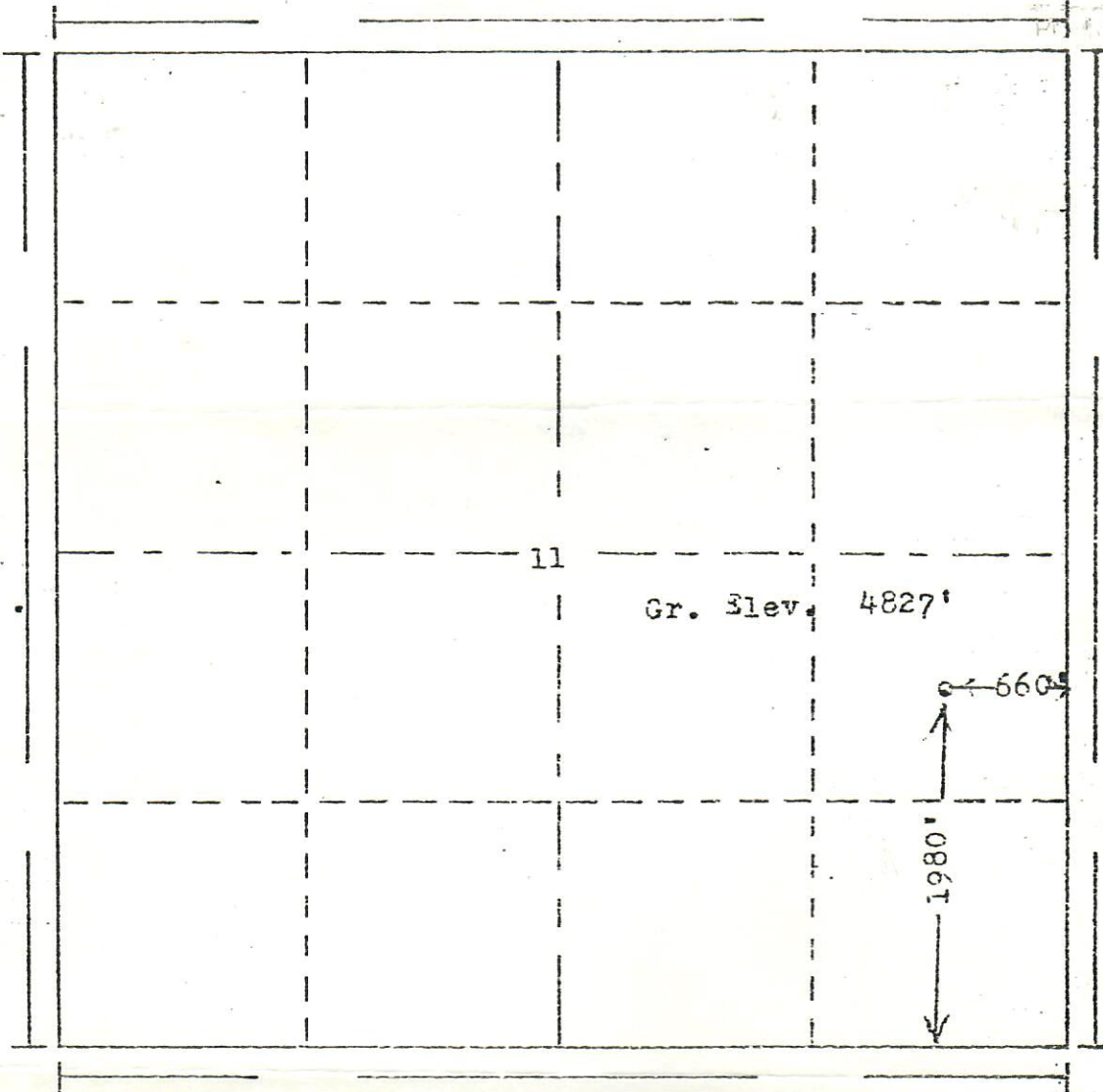
00205365

RECEIVED

JUN 6 1980

R. 63W

COLO. OIL & GAS CONS. COMM.



T.
7
N

Scale... 1" = 1000'

Powers Elevation of Denver, Colorado has in accordance with a request from Mr. Rogers for Crystal Exploration & Production Co.

determined the location of No. 43-11 Hamilton to be CNE SE Section 11 Township 7N Range 63W of the 6th Principal Meridian Weld County, Colorado

I hereby certify that this plat is an accurate representation of a correct survey showing the location of

Date: 5-27-80

Licensed Land Surveyor No. 2853
State of Colorado