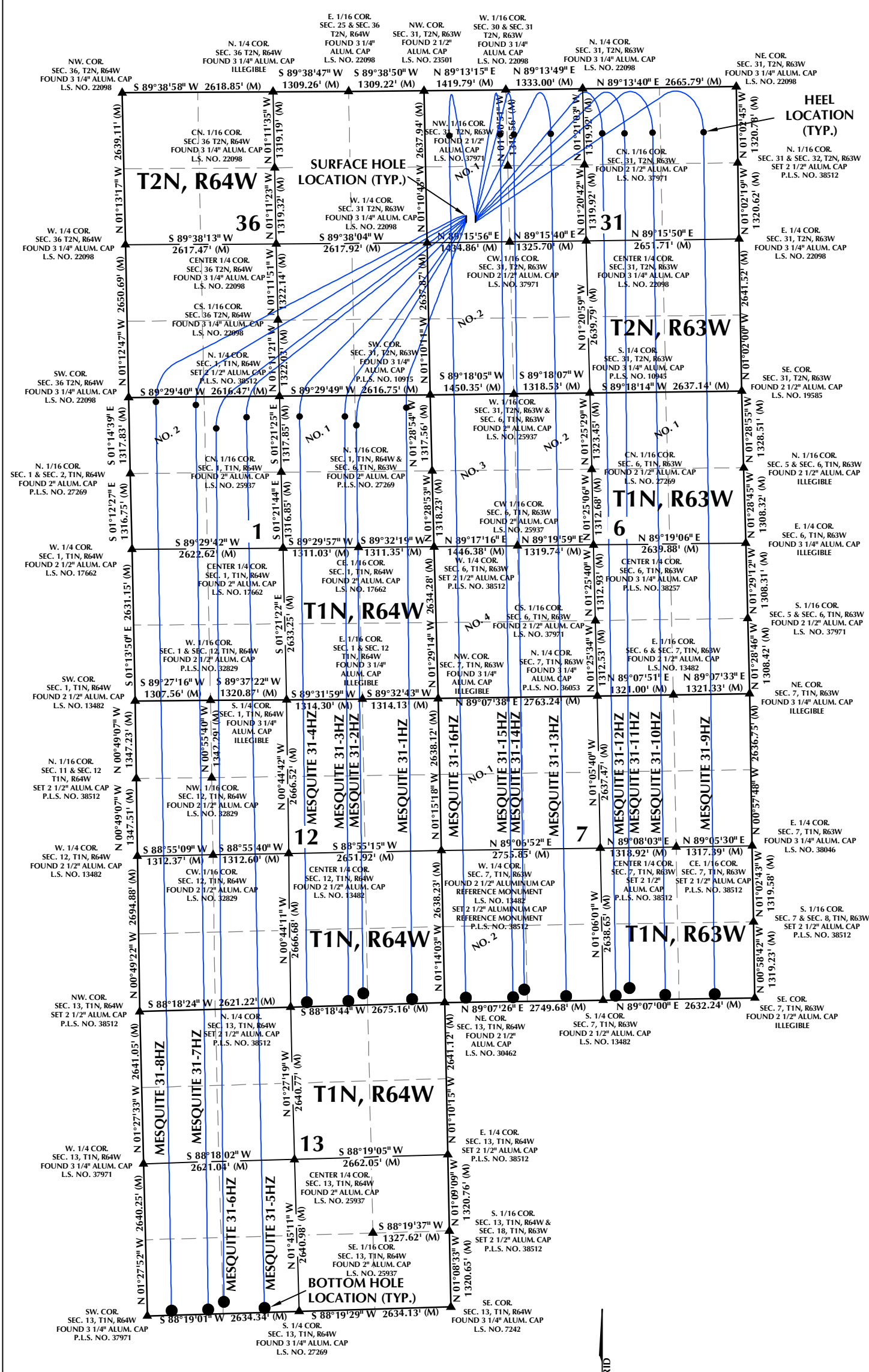


DIRECTIONAL WELL PLAT (ECMC) / MULTI-WELL PLAN (OGED)

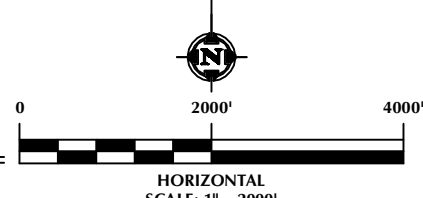
SECTION 31, T2N, R63W, SECTION 36, T2N, R64W, SECTIONS 1, 12 & 13, T1N, R64W & SECTIONS 6 & 7, T1N, R63W, 6TH P.M. WELD COUNTY, COLORADO



HEEL LOCATION (TYP.)

SURFACE HOLE LOCATION (TYP.)

BOTTOM HOLE LOCATION (TYP.)



- NOTES:**
1. ▲ INDICATES SECTION CORNER.
 2. ● INDICATES CALCULATED CORNER.
 3. BASIS OF BEARINGS DERIVED FROM COLORADO COORDINATE SYSTEM OF 1983, NORTH ZONE.
 4. ALL MEASURED DISTANCES ARE GRID. COMBINED SCALE FACTOR: .99973055 CALCULATED FROM THE CW. 1/16 CORNER OF SECTION 31, T2N, R63W.
 5. WELL FOOTAGES ARE MEASURED AT RIGHT ANGLES TO THE SECTION LINES.

WELL PAD - MESQUITE HZ

DIRECTIONAL WELL PLAT (ECMC) / MULTI-WELL PLAN (OGED)
 MESQUITE 31-1HZ,
 MESQUITE 31-2HZ, MESQUITE 31-3HZ, MESQUITE 31-4HZ,
 MESQUITE 31-5HZ, MESQUITE 31-6HZ, MESQUITE 31-7HZ,
 MESQUITE 31-8HZ, MESQUITE 31-9HZ, MESQUITE 31-10HZ,
 MESQUITE 31-11HZ, MESQUITE 31-12HZ, MESQUITE 31-13HZ,
 MESQUITE 31-14HZ, MESQUITE 31-15HZ & MESQUITE 31-16HZ
 LOCATED IN SECTION 31, T2N, R63W, SECTION 36, T2N, R64W,
 SECTIONS 1, 12 & 13, T1N, R64W & SECTIONS 6 & 7, T1N, R63W, 6TH P.M.
 WELD COUNTY, COLORADO

**Kerr-McGee Oil &
Gas Onshore LP**
 1099 18th Street
 Denver, Colorado 80202



CONSULTING, LLC

SHERIDAN OFFICE LOVELAND OFFICE
 1095 Saberton Avenue 6706 North Franklin Avenue
 Sheridan, Wyoming 82801 Loveland, Colorado 80538
 Phone 307-674-0609 Phone 970-776-4331

DRAFTED BY:	SJM	CHECKED BY:	RKF	SHEET NO.:	
DATE DRAFTED:	10/2/24	DATE SURVEYED:	8/15/24	1A	
REVISED:		FILE NAME:	23-50		1A OF 1

K:\ANDRKO\2023\2023_50_MESQUITE_T2N_R63W_SEC_31\PLATS\MESQUITE.dwg, 10/3/2024 12:04:06 PM, sntbr

DIRECTIONAL WELL PLAT (ECMC) / MULTI-WELL PLAN (OGED)

SECTION 31, T2N, R63W, SECTION 36, T2N, R64W, SECTIONS 1, 12 & 13, T1N, R64W & SECTIONS 6 & 7, T1N, R63W, 6TH P.M. WELD COUNTY, COLORADO

WELL NOTES:

MESQUITE 31-1HZ
 SURFACE HOLE LOCATION: 2282' FNL, 685' FWL (SEC. 31, T2N, R63W)
 HEEL LOCATION: 219' FNL, 422' FEL (SEC. 1, T1N, R64W)
 BOTTOM HOLE LOCATION: 75' FSL, 567' FEL (SEC. 12, T1N, R64W)

MESQUITE 31-2HZ
 SURFACE HOLE LOCATION: 2267' FNL, 685' FWL (SEC. 31, T2N, R63W)
 HEEL LOCATION: 517' FNL, 1296' FEL (SEC. 1, T1N, R64W)
 BOTTOM HOLE LOCATION: 200' FSL, 1413' FEL (SEC. 12, T1N, R64W)

MESQUITE 31-3HZ
 SURFACE HOLE LOCATION: 2252' FNL, 686' FWL (SEC. 31, T2N, R63W)
 HEEL LOCATION: 358' FNL, 1492' FEL (SEC. 1, T1N, R64W)
 BOTTOM HOLE LOCATION: 75' FSL, 1670' FEL (SEC. 12, T1N, R64W)

MESQUITE 31-4HZ
 SURFACE HOLE LOCATION: 2237' FNL, 686' FWL (SEC. 31, T2N, R63W)
 HEEL LOCATION: 353' FNL, 2276' FEL (SEC. 1, T1N, R64W)
 BOTTOM HOLE LOCATION: 75' FSL, 2390' FEL (SEC. 12, T1N, R64W)

MESQUITE 31-5HZ
 SURFACE HOLE LOCATION: 2222' FNL, 686' FWL (SEC. 31, T2N, R63W)
 HEEL LOCATION: 360' FNL, 2036' FWL (SEC. 1, T1N, R64W)
 BOTTOM HOLE LOCATION: 75' FSL, 2032' FWL (SEC. 13, T1N, R64W)

MESQUITE 31-6HZ
 SURFACE HOLE LOCATION: 2207' FNL, 686' FWL (SEC. 31, T2N, R63W)
 HEEL LOCATION: 549' FNL, 1506' FWL (SEC. 1, T1N, R64W)
 BOTTOM HOLE LOCATION: 200' FSL, 1333' FWL (SEC. 13, T1N, R64W)

MESQUITE 31-7HZ
 SURFACE HOLE LOCATION: 2192' FNL, 687' FWL (SEC. 31, T2N, R63W)
 HEEL LOCATION: 137' FNL, 1160' FWL (SEC. 1, T1N, R64W)
 BOTTOM HOLE LOCATION: 75' FSL, 1057' FWL (SEC. 13, T1N, R64W)

MESQUITE 31-8HZ
 SURFACE HOLE LOCATION: 2177' FNL, 687' FWL (SEC. 31, T2N, R63W)
 HEEL LOCATION: 76' FNL, 470' FWL (SEC. 1, T1N, R64W)
 BOTTOM HOLE LOCATION: 75' FSL, 421' FWL (SEC. 13, T1N, R64W)

MESQUITE 31-9HZ
 SURFACE HOLE LOCATION: 2284' FNL, 845' FWL (SEC. 31, T2N, R63W)
 HEEL LOCATION: 779' FNL, 583' FEL (SEC. 31, T2N, R63W)
 BOTTOM HOLE LOCATION: 75' FSL, 695' FEL (SEC. 7, T1N, R63W)

MESQUITE 31-10HZ
 SURFACE HOLE LOCATION: 2269' FNL, 845' FWL (SEC. 31, T2N, R63W)
 HEEL LOCATION: 775' FNL, 1465' FEL (SEC. 31, T2N, R63W)
 BOTTOM HOLE LOCATION: 75' FSL, 1552' FEL (SEC. 7, T1N, R63W)

MESQUITE 31-11HZ
 SURFACE HOLE LOCATION: 2254' FNL, 845' FWL (SEC. 31, T2N, R63W)
 HEEL LOCATION: 783' FNL, 1951' FEL (SEC. 31, T2N, R63W)
 BOTTOM HOLE LOCATION: 200' FSL, 2171' FEL (SEC. 7, T1N, R63W)

MESQUITE 31-12HZ
 SURFACE HOLE LOCATION: 2239' FNL, 846' FWL (SEC. 31, T2N, R63W)
 HEEL LOCATION: 777' FNL, 2338' FEL (SEC. 31, T2N, R63W)
 BOTTOM HOLE LOCATION: 75' FSL, 2411' FEL (SEC. 7, T1N, R63W)

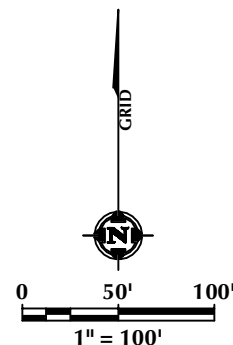
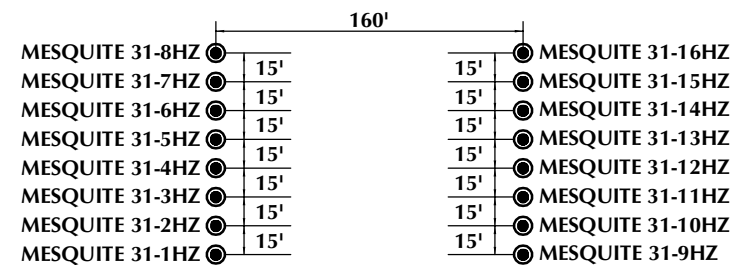
MESQUITE 31-13HZ
 SURFACE HOLE LOCATION: 2224' FNL, 846' FWL (SEC. 31, T2N, R63W)
 HEEL LOCATION: 772' FNL, 2183' FWL (SEC. 31, T2N, R63W)
 BOTTOM HOLE LOCATION: 75' FSL, 2111' FWL (SEC. 7, T1N, R63W)

MESQUITE 31-14HZ
 SURFACE HOLE LOCATION: 2209' FNL, 846' FWL (SEC. 31, T2N, R63W)
 HEEL LOCATION: 774' FNL, 1540' FWL (SEC. 31, T2N, R63W)
 BOTTOM HOLE LOCATION: 200' FSL, 1385' FWL (SEC. 7, T1N, R63W)

MESQUITE 31-15HZ
 SURFACE HOLE LOCATION: 2194' FNL, 847' FWL (SEC. 31, T2N, R63W)
 HEEL LOCATION: 771' FNL, 1303' FWL (SEC. 31, T2N, R63W)
 BOTTOM HOLE LOCATION: 75' FSL, 1186' FWL (SEC. 7, T1N, R63W)

MESQUITE 31-16HZ
 SURFACE HOLE LOCATION: 2179' FNL, 847' FWL (SEC. 31, T2N, R63W)
 HEEL LOCATION: 782' FNL, 420' FWL (SEC. 31, T2N, R63W)
 BOTTOM HOLE LOCATION: 75' FSL, 367' FWL (SEC. 7, T1N, R63W)

WELL HEAD SPACING DETAIL



WELL PAD - MESQUITE HZ

DIRECTIONAL WELL PLAT (ECMC) / MULTI-WELL PLAN (OGED)
 MESQUITE 31-1HZ,
 MESQUITE 31-2HZ, MESQUITE 31-3HZ, MESQUITE 31-4HZ,
 MESQUITE 31-5HZ, MESQUITE 31-6HZ, MESQUITE 31-7HZ,
 MESQUITE 31-8HZ, MESQUITE 31-9HZ, MESQUITE 31-10HZ,
 MESQUITE 31-11HZ, MESQUITE 31-12HZ, MESQUITE 31-13HZ,
 MESQUITE 31-14HZ, MESQUITE 31-15HZ & MESQUITE 31-16HZ
 LOCATED IN SECTION 31, T2N, R63W, SECTION 36, T2N, R64W,
 SECTIONS 1, 12 & 13, T1N, R64W & SECTIONS 6 & 7, T1N, R63W, 6TH P.M.
 WELD COUNTY, COLORADO

609
 CONSULTING, LLC

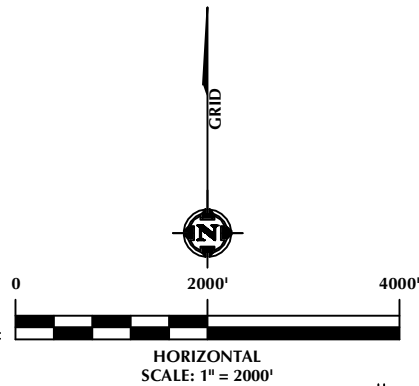
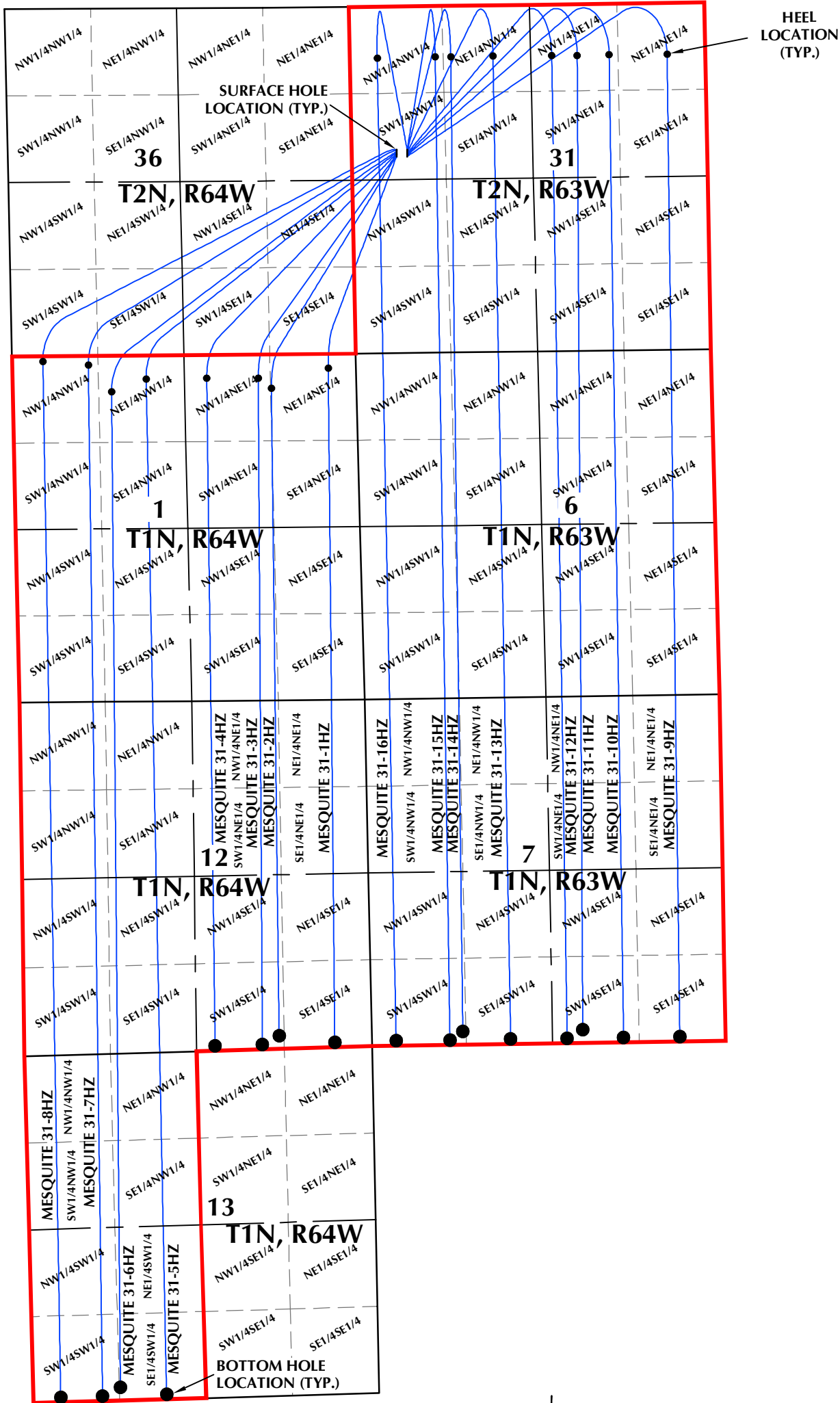
LOVELAND OFFICE
 6706 North Franklin Avenue
 Loveland, Colorado 80538
 Phone 970-776-4331

SHERIDAN OFFICE
 1095 Saberton Avenue
 Sheridan, Wyoming 82801
 Phone 307-674-0609

**Kerr-McGee Oil &
 Gas Onshore LP**
 1099 18th Street
 Denver, Colorado 80202

DRAFTED BY:	SJM	CHECKED BY:	RKF	1B 1B OF 1
DATE DRAFTED:	10/2/24	DATE SURVEYED:	8/15/24	
REVISED:		FILE NAME:	23-50	

DIRECTIONAL WELL PLAT (ECMC) / MULTI-WELL PLAN (OGED)
SECTION 31, T2N, R63W, SECTION 36, T2N, R64W,
SECTIONS 1, 12 & 13, T1N, R64W & SECTIONS 6 & 7, T1N, R63W, 6TH P.M.
WELD COUNTY, COLORADO



- LEGEND:**
- DSU BOUNDARY
 - WELLBORE TRAJECTORY
 - HEEL LOCATION
 - BOTTOM HOLE LOCATION

WELL PAD - MESQUITE HZ

DIRECTIONAL WELL PLAT (ECMC) / MULTI-WELL PLAN (OGED)
 MESQUITE 31-1HZ,
 MESQUITE 31-2HZ, MESQUITE 31-3HZ, MESQUITE 31-4HZ,
 MESQUITE 31-5HZ, MESQUITE 31-6HZ, MESQUITE 31-7HZ,
 MESQUITE 31-8HZ, MESQUITE 31-9HZ, MESQUITE 31-10HZ,
 MESQUITE 31-11HZ, MESQUITE 31-12HZ, MESQUITE 31-13HZ,
 MESQUITE 31-14HZ, MESQUITE 31-15HZ & MESQUITE 31-16HZ
 LOCATED IN SECTION 31, T2N, R63W, SECTION 36, T2N, R64W,
 SECTIONS 1, 12 & 13, T1N, R64W & SECTIONS 6 & 7, T1N, R63W, 6TH P.M.
 WELD COUNTY, COLORADO

**Kerr-McGee Oil &
 Gas Onshore LP**
 1099 18th Street
 Denver, Colorado 80202



CONSULTING, LLC

SHERIDAN OFFICE
 1095 Saberton Avenue
 Sheridan, Wyoming 82801
 Phone 307-674-0609

LOVELAND OFFICE
 6706 North Franklin Avenue
 Loveland, Colorado 80538
 Phone 970-776-4331

DRAFTED BY:	SJM	CHECKED BY:	RKF	SHEET NO:
DATE DRAFTED:	10/2/24	DATE SURVEYED:	8/15/24	1C
REVISED:		FILE NAME:	23-50	1C OF 1