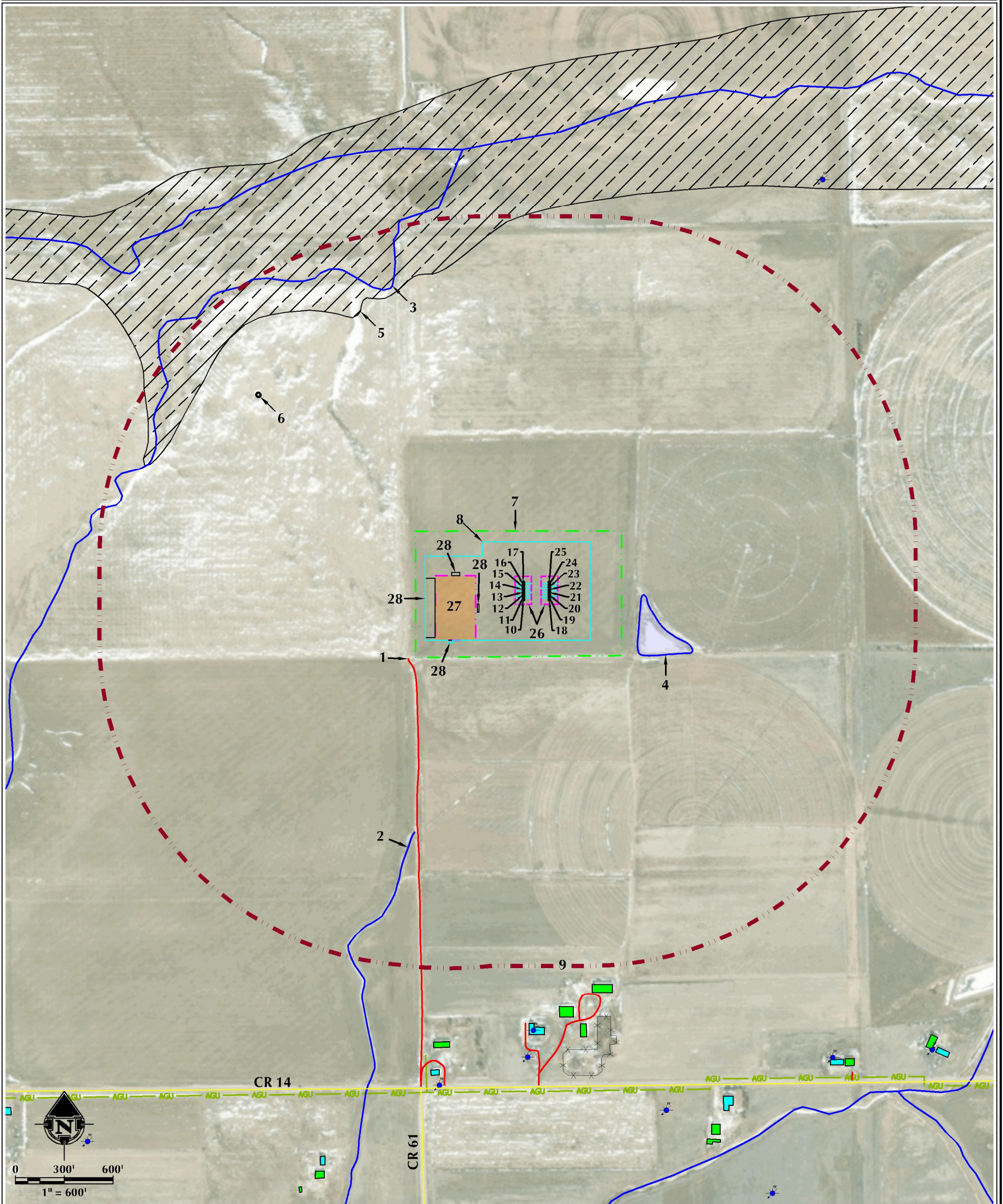


# LOCATION DRAWING MESQUITE HZ

## HORIZONTAL MULTI-WELL PAD

SW1/4 NW1/4 SECTION 31, TOWNSHIP 2 NORTH, RANGE 63 WEST, 6TH P.M., WELD COUNTY, COLORADO



- |  |  |   |
|--|--|---|
| <ol style="list-style-type: none"> <li>1. EXISTING PRIVATE ROAD IS ±154' SW.</li> <li>2. EXISTING DITCH IS ±1183' S.</li> <li>3. NHD FLOWLINE IS ±1654' N.</li> <li>4. EXISTING POND IS ±291' E.</li> <li>5. 100-YEAR FLOODPLAIN (EFFECTIVE) IS ± 1533' N.</li> <li>6. EXISTING WELL: STATE C 41-36 (PA) IS ±1426' NW.</li> <li>7. PROPOSED OIL &amp; GAS LOCATION</li> <li>8. WORKING PAD SURFACE</li> <li>9. 2000' WORKING PAD SURFACE BUFFER</li> <li>10. PROPOSED WELL: MESQUITE 31-1HZ</li> <li>11. PROPOSED WELL: MESQUITE 31-2HZ</li> </ol> | <ol style="list-style-type: none"> <li>12. PROPOSED WELL: MESQUITE 31-3HZ</li> <li>13. PROPOSED WELL: MESQUITE 31-4HZ</li> <li>14. PROPOSED WELL: MESQUITE 31-5HZ</li> <li>15. PROPOSED WELL: MESQUITE 31-6HZ</li> <li>16. PROPOSED WELL: MESQUITE 31-7HZ</li> <li>17. PROPOSED WELL: MESQUITE 31-8HZ</li> <li>18. PROPOSED WELL: MESQUITE 31-9HZ</li> <li>19. PROPOSED WELL: MESQUITE 31-10HZ</li> <li>20. PROPOSED WELL: MESQUITE 31-11HZ</li> <li>21. PROPOSED WELL: MESQUITE 31-12HZ</li> <li>22. PROPOSED WELL: MESQUITE 31-13HZ</li> </ol> | <ol style="list-style-type: none"> <li>23. PROPOSED WELL: MESQUITE 31-14HZ</li> <li>24. PROPOSED WELL: MESQUITE 31-15HZ</li> <li>25. PROPOSED WELL: MESQUITE 31-16HZ</li> <li>26. PUMP JACK OPERATIONS AREA</li> <li>27. PROPOSED MESQUITE HZ FACILITY</li> <li>28. TEMPORARY EQUIPMENT AREA</li> </ol> |
|--|--|---|

<b>LEGEND</b> <ul style="list-style-type: none"> <li>● EXISTING WELL</li> <li>● PROPOSED WELL</li> <li>● WATER WELL</li> <li>— PUBLIC ROAD</li> <li>— PRIVATE ROAD</li> <li>— EXISTING FENCE</li> <li>— WORKING PAD SURFACE</li> <li>— 2000' WORKING PAD SURFACE BUFFER</li> <li>— PROPOSED OIL &amp; GAS LOCATION</li> <li>— PUMP JACK OPERATIONS AREA</li> <li>— PROPOSED FACILITY</li> <li>— DITCH/CANAL/DRAINAGE</li> <li>— EXISTING FACILITY</li> <li>— EXISTING BUILDING</li> <li>— RESIDENTIAL BUILDING UNIT</li> <li>— NON-RESIDENTIAL BUILDING UNIT</li> <li>— TEMPORARY EQUIPMENT AREA</li> <li>— 100-YEAR FLOODPLAIN (EFFECTIVE)</li> <li>— AGU — ABOVE GROUND UTILITY LINE</li> <li>— EPL — EXISTING PIPELINE</li> <li>— POND</li> </ul>	<p><b>ALL MEASUREMENTS ARE MADE FROM NEAREST EDGE OF THE WORKING PAD SURFACE</b></p> <p>SURFACE USE: DRYLAND CROP</p> <p>NEAREST BUILDING UNIT: ±2356' S</p> <p>PREPARED FOR: <b>Kerr-McGee Oil &amp; Gas Onshore LP</b></p>
---	--

<p><b>609 CONSULTING, LLC</b>          LOVELAND OFFICE: 6706 North Franklin Avenue, Loveland, Colorado 80538, Phone: 970-776-1331          SHERIDAN OFFICE: 1095 Saberton Avenue, Sheridan, Wyoming 82801, Phone: 307-674-0609</p>	DATE SURVEYED: 8/15/24 DATE: 9/6/24 DRAFTER: JAC REVISED:	<b>DATA SOURCES &amp; NOTES:</b> - AERIAL COURTESY OF ESRI, INC. - WATER WELLS COURTESY OF COLORADO DIVISION OF WATER RESOURCES. - MANY FEATURES ON THIS MAP COME FROM PUBLICLY AVAILABLE DATA AND FEATURES LYING OUTSIDE THE SURFACE PROPERTY MAY HAVE BEEN OBTAINED FROM AERIAL IMAGERY. THE ACCURACY AND COMPLETENESS OF SAID DATA HAS NOT BEEN VERIFIED BY 609 CONSULTING, LLC. EXISTING CONDITIONS MAY DIFFER FROM WHAT IS SHOWN.	
--	--	---	--

K:\HAND\AR\021021023\_50\_MESQUITE\_T2N\_R63W\_SEC\_31.DWG\MESQUITE\_T2N\_R63W\_SEC\_31.dwg: 9/6/2024 5:46:05 AM saundberg