

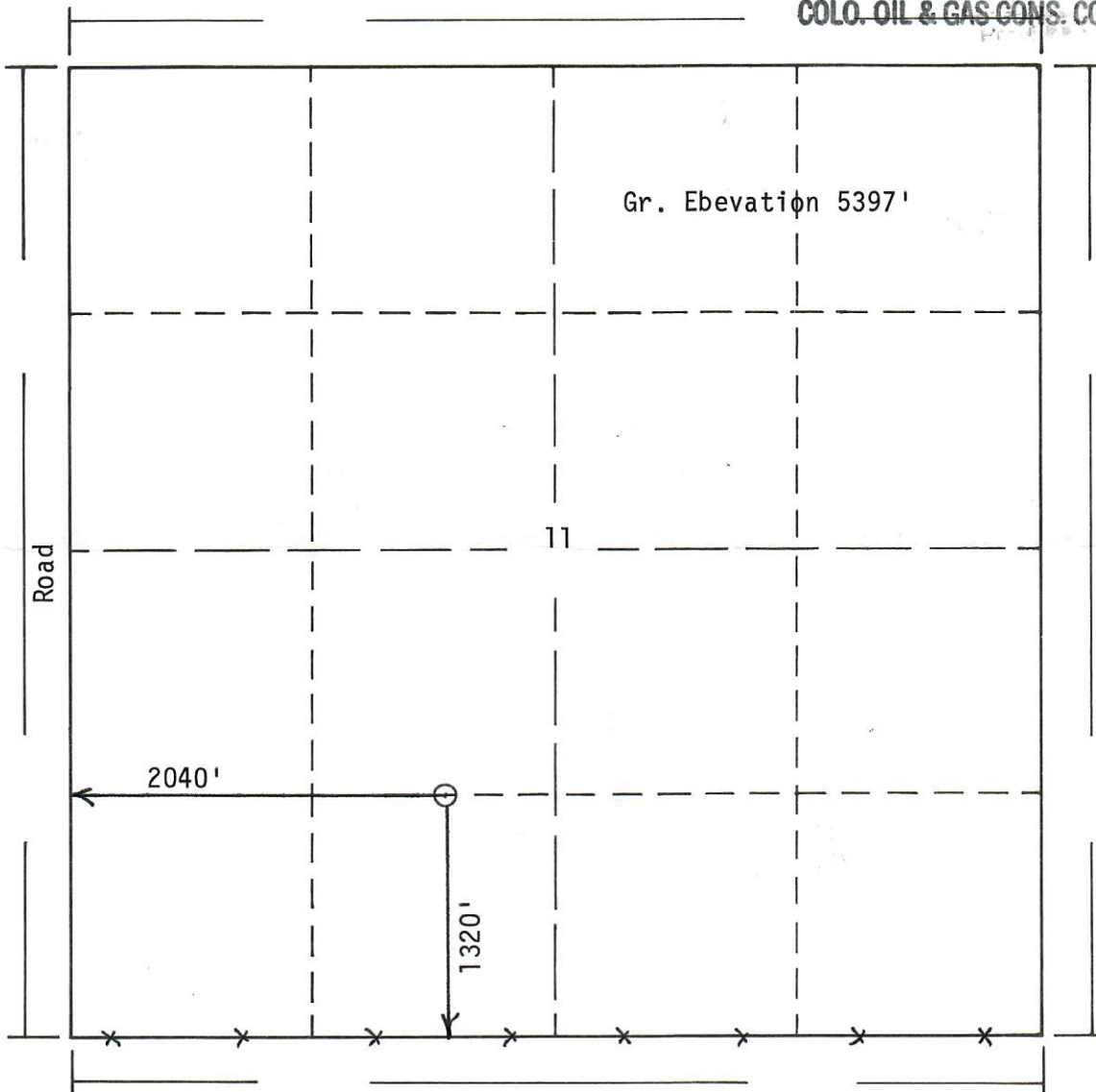


Form PS-10



R. 65 W

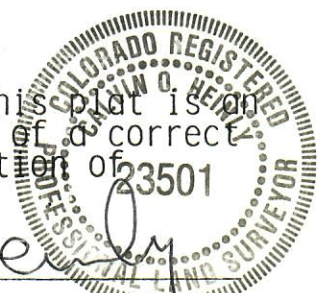
RECEIVED
JUL 11 1988
COLO. OIL & GAS CONS. COMM.



Scale: 1"=1000'

Powers Elevation of Denver, Colorado has in accordance with a request from Mark Sodden for Ampet Inc. determined the location of 11-24 Ampet-Universal to be 1320fs1, 2040fw1 Section 11, Township 3 S Range 65 W of the 6th Principal Meridian, Adams County, Colorado

I hereby certify that this plot is an accurate representation of a correct survey showing the location of 11-24 Ampet-Universal



Date: 7-8-88

Calvin Henry
Licensed Land Surveyor No. 23501
State of Colorado