



7/8/88

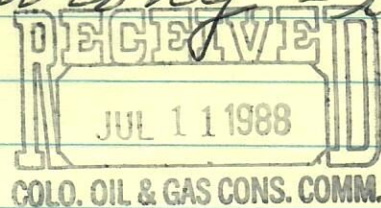
Jim M.

Ampet brought Verbal APD for a "J" well at 1300' FS + 660. from E of SE/SW. They say 80a in lease (E $\frac{1}{2}$ SW $\frac{1}{4}$)

I did not approve because

#1 - Rock well in NE/SE FS say it is a J well

However this is wrong - it is a "D" well



~~#2~~
Ampet closed deal yesterday with Rock to buy Rock 298-1 well

I said we would approve APD if

1. Rock said they sold lease to Ampet
2. Rock put wrong zone down and well is a "D"
3. Ampet well not approvable for D
4. Protect fox hills



Dual Induction Focused Log



FILE NO.	COMPANY	ROCK OIL CORPORATION
APR NO.	WELL	248-1 COTTONWOOD-UPRR
	FIELD	MANDELLA
	COUNTY	ADAMS
	LOCATION:	NE SW 2010 FWI, & 2010 F.S.I.
	STATE	COLORADO
	SEC	11 TWP 3S RGE 65N
Permanent Datum	G.L.	Elev 5397
Log Measured from	K.B.	Fl. Above Permanent Datum
Drilling Measured from	K.B.	Elev 5408
		DF 5397
		GL 5397
		Other Services
		CDL/CGR
		CNLOG
		PROLOG
Date	5-20-84	RECEIVED
Run No.	ONE	MAY 31 1984
Service Order	42266	
Depth - Driller	8246	COLO. OIL & GAS CORP. COMM.
Depth - Logger	8252	
Bottom Logged Interval	8250	
Top Logged Interval	CSG.	
Casing - Driller	8 5/8 @ 307	
Casing - Logger	307	
Bit Size	7 7/8	
Type Fluid in Hole	CHEM GEL	
Density and Viscosity	9.5 150	
pH and Fluid Loss	9.5 5.6 cc	
Source of Sample	FLOWLINE	
Rin @ Meas. Temp.	3.12 @ 82 F	
Rin @ Meas. Temp.	2.34 @ 82 *F	
Rin @ Meas. Temp.	3.90 @ 82 *F	
Source of Rin and Rin	CALC I/CALC	
Rin @ BHT	1.36 @ 88 *F	
Time Since Circ.	3 HOURS	
Max. Rec. Temp. Deg. F.	188 *F	
Equip. No. and Location	6401 FM	
Recorded By	J.W. CROOK	
Witnessed By	STEVE REVOLDS	

FOLD HERE

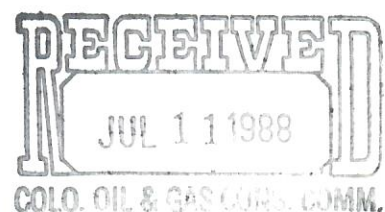
In making interpretations of logs our employees will give Customer the benefit of their best judgment, but since all interpretations are opinions based on inferences from electrical or other measurements, we cannot and do not guarantee the accuracy or the correctness of any interpretation. We shall not be liable or responsible for any loss, cost, damages, or expenses whatsoever incurred or sustained by the Customer resulting from any interpretation made by any of our employees.

REMARKS RUN (1)

EQUIPMENT DATA

RUN	TRIP	TOOL	SERIAL NO.	SERIES NO.	POSITION
1	1	DIFL	55541	1503	FREE
1	1	GR			
1	1	CAL			

 * CALIBRATION/VERIFICATION SUMMARY *
 * DATE 05/21/84 TIME 05:29:40 *
 * RUN 1 TRIP 1 *



LOG NAME DIFL ASSET NO. 55541 UNIT NO. HL 6401
 CALIBRATION ENTERED ON 05/21/84 AT 02:39:09

CURVE	MILLIVOLTS		SCALING FACTORS		ENGINEERING VALUES		UNITS
	LOW	HIGH	ADD.	MULT.	LOW	HIGH	

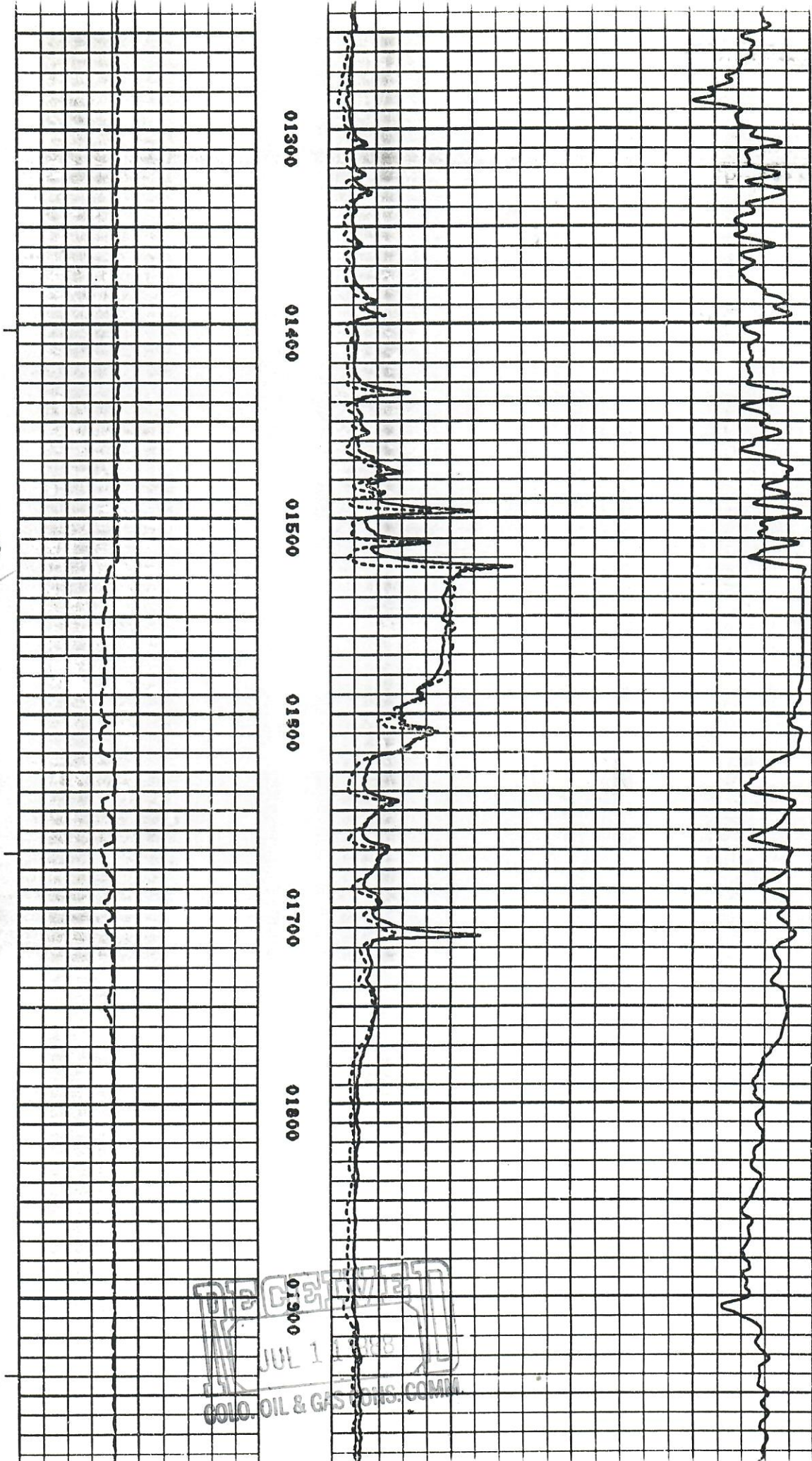
DATE 05/12/84 CALIBRATION TIME 08:45:43

CILD	-0.9	517.9	1.689	1.8766	1.000	500.000	MHO
CILM	0.9	517.8	0.237	2.1786	1.000	500.000	MHO
CFOC	6.9	510.8	-5.845	2.4163	1.000	500.000	MHO

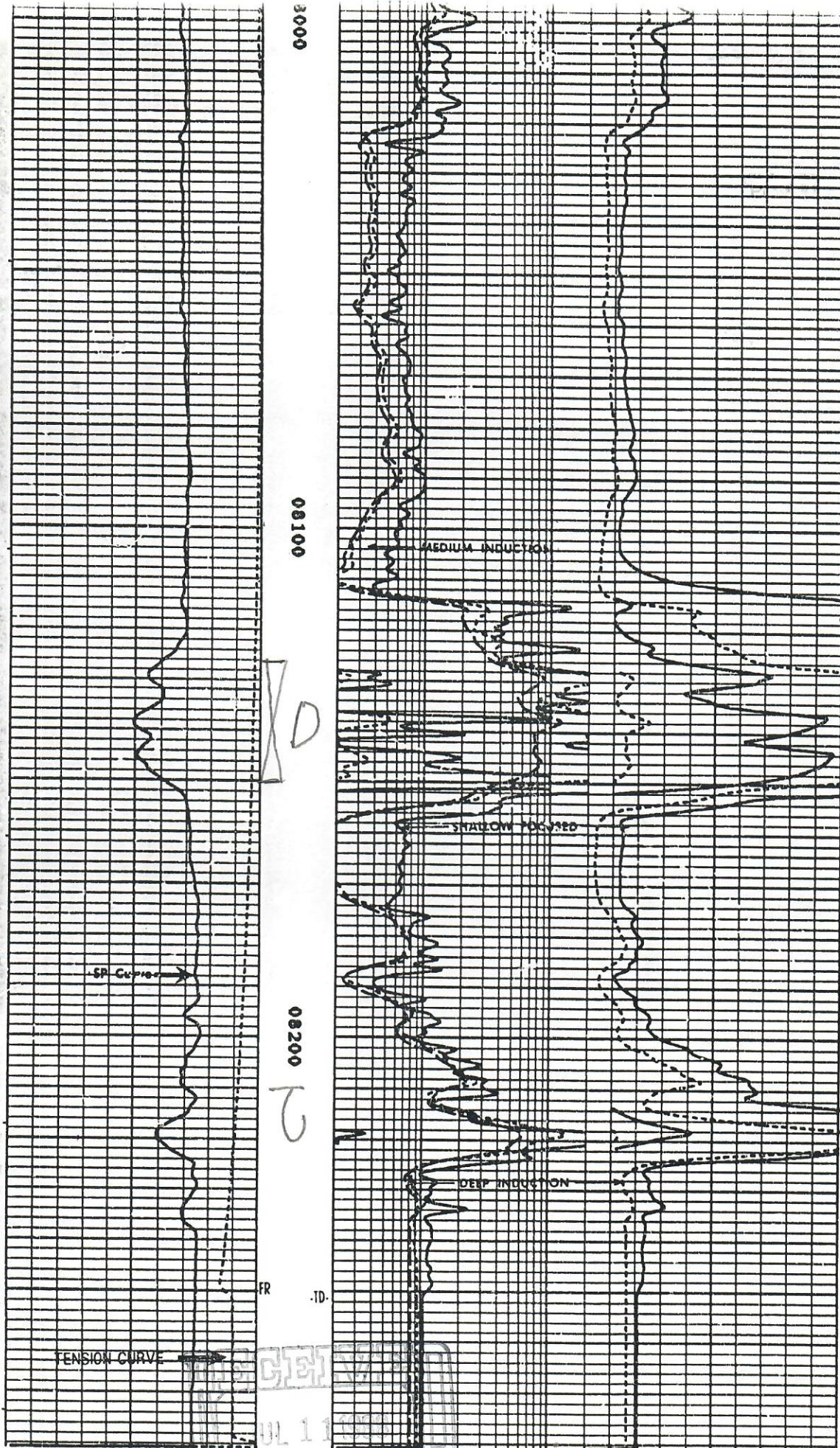
DATE 05/12/84 PRIMARY VERIFICATION TIME 08:51:01

Rock
248

Fox Hills



01900
JUL 1 1978
COLO. OIL & GAS COM. COMM.



COLO. OIL & GAS CONS. COMM.