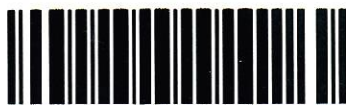




FORM F-106



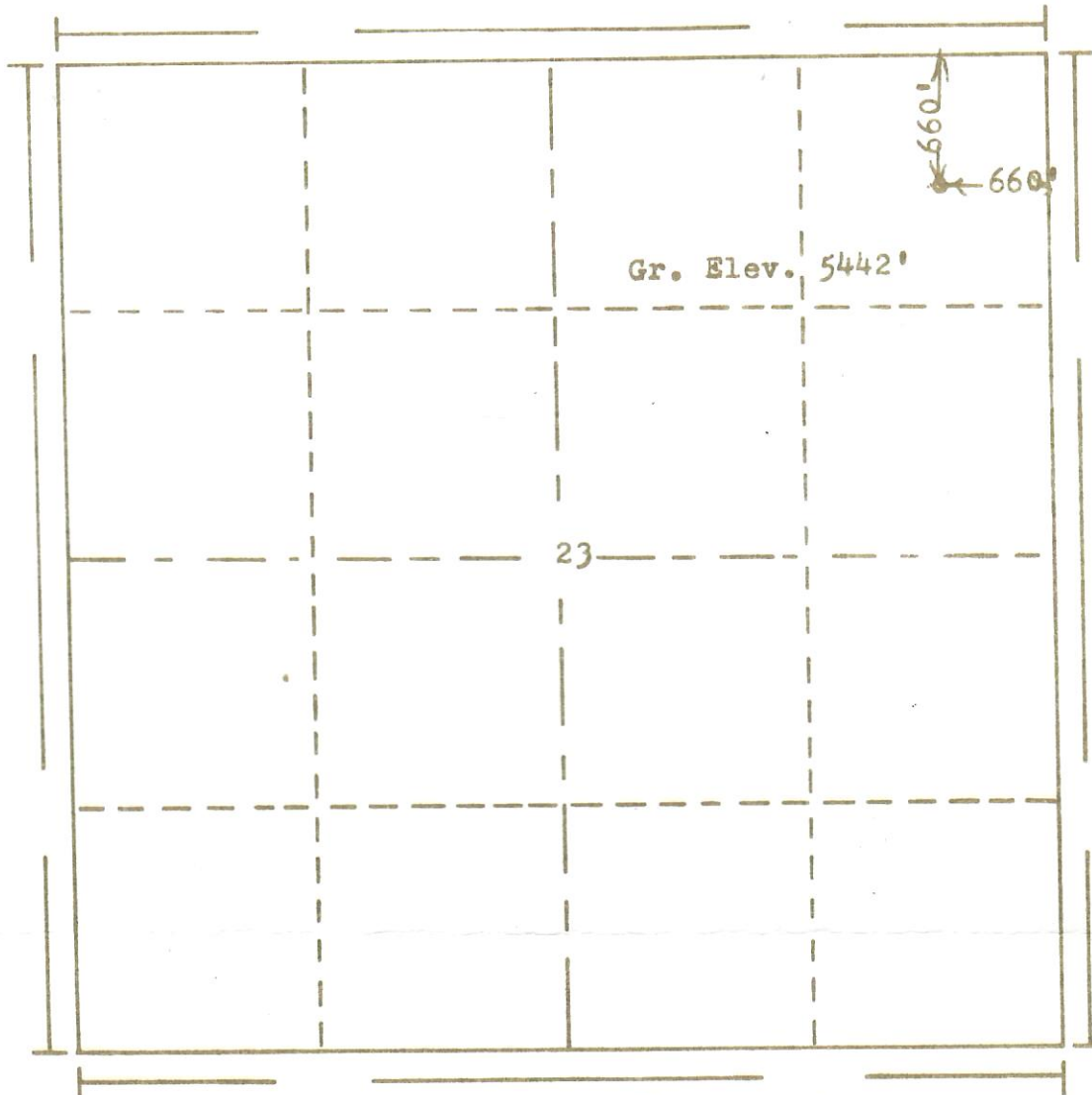
99999999

R. 65W

RECEIVED

AUG 13 1974

COLO. OIL & GAS CONS. COMM.

T.
3
S

Powers Elevation Company, Inc. of Denver, Colorado
has in accordance with a request from Sandee
for Webb Resources Inc.
determined the location of No. 23-1 Jeff Drohan
to be CNE NE Section 23 Township 3S
Range 65W of the 6th Principal Meridian
Adams County, Colorado



00410262

I hereby certify that this plat is an
accurate representation of a correct
survey showing the location of

Date: 8-6-74

B. J. H. Homan
Licensed Land Surveyor No. 2853
State of Colorado