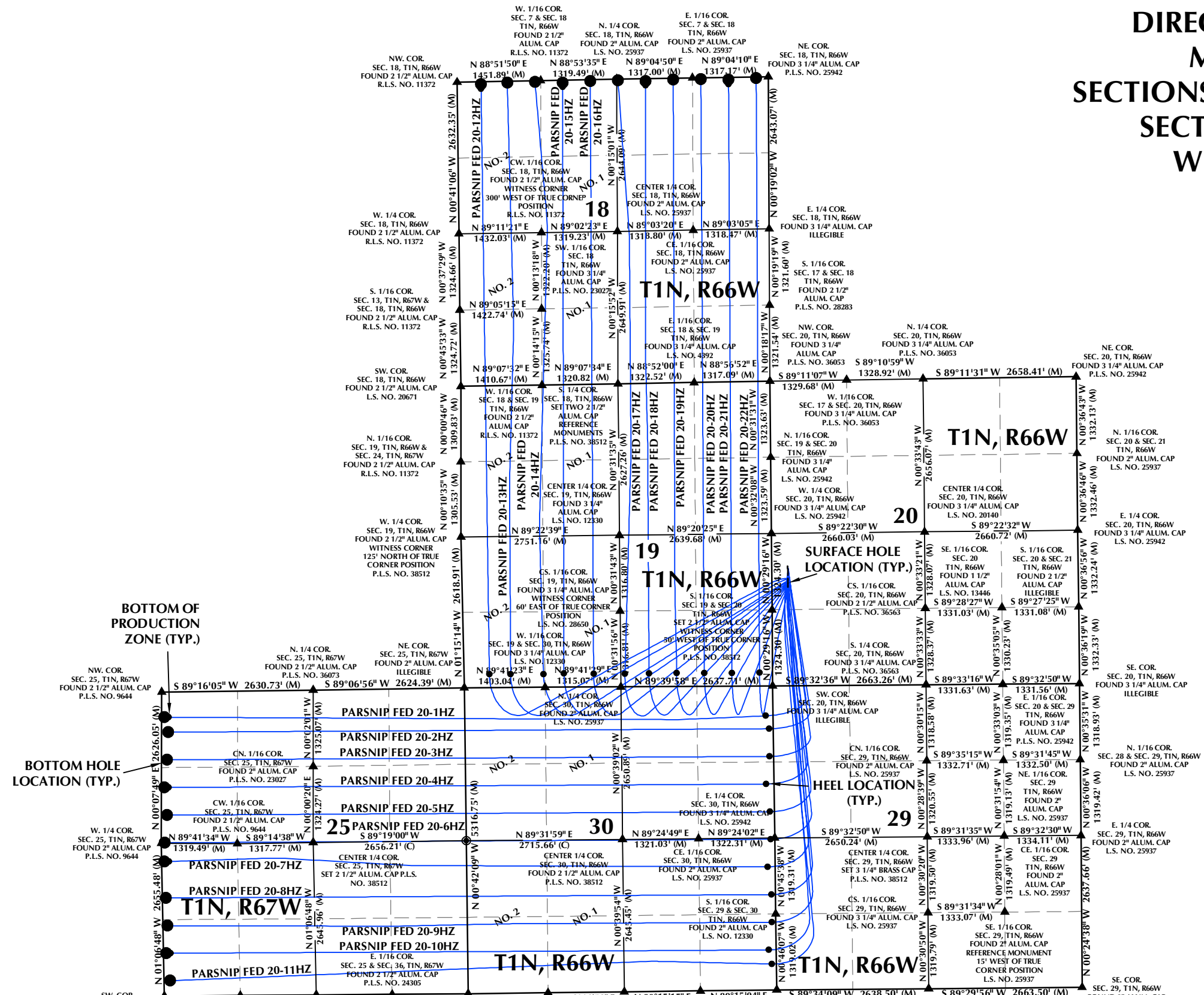


DIRECTIONAL WELL PLAT (ECMC) / MULTI-WELL PLAN (OGED) SECTIONS 18, 19, 20, 29 & 30, T1N, R66W & SECTION 25, T1N, R67W 6TH P.M. WELD COUNTY, COLORADO



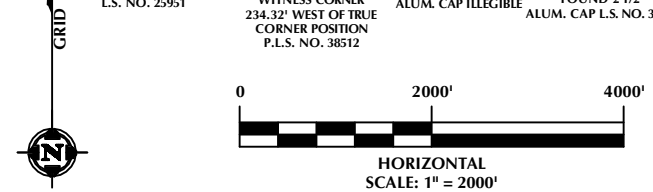
BOTTOM OF PRODUCTION ZONE (TYP.)

BOTTOM HOLE LOCATION (TYP.)

WELL PAD - PARSNIP FED HZ

DIRECTIONAL WELL PLAT (ECMC) /
MULTI-WELL PLAN (OGED)
PARSNIP FED 20-1HZ,
PARSNIP FED 20-2HZ, PARSNIP FED 20-3HZ, PARSNIP FED 20-4HZ,
PARSNIP FED 20-5HZ, PARSNIP FED 20-6HZ, PARSNIP FED 20-7HZ,
PARSNIP FED 20-8HZ, PARSNIP FED 20-9HZ, PARSNIP FED 20-10HZ,
PARSNIP FED 20-11HZ, PARSNIP FED 20-12HZ, PARSNIP FED 20-13HZ,
PARSNIP FED 20-14HZ, PARSNIP FED 20-15HZ, PARSNIP FED 20-16HZ,
PARSNIP FED 20-17HZ, PARSNIP FED 20-18HZ, PARSNIP FED 20-19HZ,
PARSNIP FED 20-20HZ, PARSNIP FED 20-21HZ & PARSNIP FED 20-22HZ
SECTIONS 18, 19, 20, 29 & 30, T1N, R66W &
SECTION 25, T1N, R67W 6TH P.M.
WELD COUNTY, COLORADO

- NOTES:**
- ▲ INDICATES SECTION CORNER.
 - INDICATES CALCULATED CORNER.
 - BASIS OF BEARINGS DERIVED FROM COLORADO COORDINATE SYSTEM OF 1983, NORTH ZONE.
 - ALL MEASURED DISTANCES ARE GRID.
 - COMBINED SCALE FACTOR: .99972956 CALCULATED FROM THE CS. 1/16 CORNER OF SECTION 20, T1N, R66W.
 - WELL FOOTAGES ARE MEASURED AT RIGHT ANGLES TO THE SECTION LINES.



609

CONSULTING, LLC

LOVELAND OFFICE
6706 North Franklin Avenue
Loveland, Colorado 80538
Phone 970-776-4331

SHERIDAN OFFICE
1095 Saberton Avenue
Sheridan, Wyoming 82801
Phone 307-674-0609

**Kerr-McGee Oil &
Gas Onshore LP**

1099 18th Street
Denver, Colorado 80202

DRAFTED BY:	SJM	CHECKED BY:	RKF
DATE DRAFTED:	11/13/24	DATE SURVEYED:	9/18/24
REVISED:		FILE NAME:	23-174

**SHEET NO:
1A
1A OF 1**

K:\MWD\2023\2023_174_PARSNIP_T1N_R66W_SEC_20\PLATS\PARSNIP\PARSNIP.dwg, 11/14/2024, 8:01:33 AM, smfkr

DIRECTIONAL WELL PLAT (ECMC) / MULTI-WELL PLAN (OGED)

SECTIONS 18, 19, 20, 29 & 30, T1N, R66W & SECTION 25, T1N, R67W 6TH P.M.

WELD COUNTY, COLORADO

WELL NOTES:

PARSNIP FED 20-1HZ
 SURFACE HOLE LOCATION: 2072' FSL, 280' FWL (SEC. 20, T1N, R66W)
 HEEL LOCATION: 519' FNL, 131' FEL (SEC. 30, T1N, R66W)
 BOTTOM OF PRODUCTION ZONE: 441' FNL, 121' FWL (SEC. 25, T1N, R67W)
 BOTTOM HOLE LOCATION: 440' FNL, 45' FWL (SEC. 25, T1N, R67W)

PARSNIP FED 20-2HZ
 SURFACE HOLE LOCATION: 2057' FSL, 280' FWL (SEC. 20, T1N, R66W)
 HEEL LOCATION: 742' FNL, 72' FEL (SEC. 30, T1N, R66W)
 BOTTOM HOLE LOCATION: 699' FNL, 114' FWL (SEC. 25, T1N, R67W)

PARSNIP FED 20-3HZ
 SURFACE HOLE LOCATION: 2042' FSL, 281' FWL (SEC. 20, T1N, R66W)
 HEEL LOCATION: 1223' FNL, 72' FEL (SEC. 30, T1N, R66W)
 BOTTOM HOLE LOCATION: 1179' FNL, 93' FWL (SEC. 25, T1N, R67W)

PARSNIP FED 20-4HZ
 SURFACE HOLE LOCATION: 2027' FSL, 281' FWL (SEC. 20, T1N, R66W)
 HEEL LOCATION: 1703' FNL, 133' FEL (SEC. 30, T1N, R66W)
 BOTTOM OF PRODUCTION ZONE: 1660' FNL, 122' FWL (SEC. 25, T1N, R67W)
 BOTTOM HOLE LOCATION: 1659' FNL, 46' FWL (SEC. 25, T1N, R67W)

PARSNIP FED 20-5HZ
 SURFACE HOLE LOCATION: 2012' FSL, 281' FWL (SEC. 20, T1N, R66W)
 HEEL LOCATION: 2183' FNL, 74' FEL (SEC. 30, T1N, R66W)
 BOTTOM HOLE LOCATION: 2140' FNL, 95' FWL (SEC. 25, T1N, R67W)

PARSNIP FED 20-6HZ
 SURFACE HOLE LOCATION: 1997' FSL, 281' FWL (SEC. 20, T1N, R66W)
 HEEL LOCATION: 2617' FNL, 71' FEL (SEC. 30, T1N, R66W)
 BOTTOM HOLE LOCATION: 2620' FNL, 55' FWL (SEC. 25, T1N, R67W)

PARSNIP FED 20-7HZ
 SURFACE HOLE LOCATION: 1982' FSL, 281' FWL (SEC. 20, T1N, R66W)
 HEEL LOCATION: 2137' FNL, 131' FEL (SEC. 30, T1N, R66W)
 BOTTOM OF PRODUCTION ZONE: 2335' FNL, 122' FWL (SEC. 25, T1N, R67W)
 BOTTOM HOLE LOCATION: 2333' FNL, 46' FWL (SEC. 25, T1N, R67W)

PARSNIP FED 20-8HZ
 SURFACE HOLE LOCATION: 1967' FSL, 281' FWL (SEC. 20, T1N, R66W)
 HEEL LOCATION: 1655' FNL, 69' FEL (SEC. 30, T1N, R66W)
 BOTTOM HOLE LOCATION: 1702' FNL, 60' FWL (SEC. 25, T1N, R67W)

PARSNIP FED 20-9HZ
 SURFACE HOLE LOCATION: 1952' FSL, 281' FWL (SEC. 20, T1N, R66W)
 HEEL LOCATION: 1174' FNL, 69' FEL (SEC. 30, T1N, R66W)
 BOTTOM HOLE LOCATION: 1222' FNL, 77' FWL (SEC. 25, T1N, R67W)

PARSNIP FED 20-10HZ
 SURFACE HOLE LOCATION: 1937' FSL, 281' FWL (SEC. 20, T1N, R66W)
 HEEL LOCATION: 694' FNL, 129' FEL (SEC. 30, T1N, R66W)
 BOTTOM OF PRODUCTION ZONE: 742' FNL, 121' FWL (SEC. 25, T1N, R67W)
 BOTTOM HOLE LOCATION: 742' FNL, 45' FWL (SEC. 25, T1N, R67W)

PARSNIP FED 20-11HZ
 SURFACE HOLE LOCATION: 1922' FSL, 281' FWL (SEC. 20, T1N, R66W)
 HEEL LOCATION: 450' FNL, 77' FEL (SEC. 30, T1N, R66W)
 BOTTOM HOLE LOCATION: 264' FNL, 104' FWL (SEC. 25, T1N, R67W)

PARSNIP FED 20-12HZ
 SURFACE HOLE LOCATION: 1862' FSL, 281' FWL (SEC. 20, T1N, R66W)
 HEEL LOCATION: 230' FNL, 440' FWL (SEC. 19, T1N, R66W)
 BOTTOM OF PRODUCTION ZONE: 122' FNL, 415' FWL (SEC. 18, T1N, R66W)
 BOTTOM HOLE LOCATION: 46' FNL, 415' FWL (SEC. 18, T1N, R66W)

PARSNIP FED 20-13HZ
 SURFACE HOLE LOCATION: 1847' FSL, 281' FWL (SEC. 20, T1N, R66W)
 HEEL LOCATION: 230' FNL, 810' FWL (SEC. 19, T1N, R66W)
 BOTTOM OF PRODUCTION ZONE: 51' FNL, 872' FWL (SEC. 18, T1N, R66W)
 BOTTOM HOLE LOCATION: 25' FNL, 871' FWL (SEC. 18, T1N, R66W)

PARSNIP FED 20-14HZ
 SURFACE HOLE LOCATION: 1832' FSL, 281' FWL (SEC. 20, T1N, R66W)
 HEEL LOCATION: 224' FNL, 1380' FWL (SEC. 19, T1N, R66W)
 BOTTOM OF PRODUCTION ZONE: 51' FNL, 1354' FWL (SEC. 18, T1N, R66W)
 BOTTOM HOLE LOCATION: 25' FNL, 1352' FWL (SEC. 18, T1N, R66W)

PARSNIP FED 20-15HZ
 SURFACE HOLE LOCATION: 1817' FSL, 281' FWL (SEC. 20, T1N, R66W)
 HEEL LOCATION: 233' FNL, 1735' FWL (SEC. 19, T1N, R66W)
 BOTTOM OF PRODUCTION ZONE: 121' FNL, 1831' FWL (SEC. 18, T1N, R66W)
 BOTTOM HOLE LOCATION: 45' FNL, 1832' FWL (SEC. 18, T1N, R66W)

PARSNIP FED 20-16HZ
 SURFACE HOLE LOCATION: 1802' FSL, 281' FWL (SEC. 20, T1N, R66W)
 HEEL LOCATION: 230' FNL, 2251' FWL (SEC. 19, T1N, R66W)
 BOTTOM OF PRODUCTION ZONE: 51' FNL, 2312' FWL (SEC. 18, T1N, R66W)
 BOTTOM HOLE LOCATION: 25' FNL, 2312' FWL (SEC. 18, T1N, R66W)

PARSNIP FED 20-17HZ
 SURFACE HOLE LOCATION: 1787' FSL, 281' FWL (SEC. 20, T1N, R66W)
 HEEL LOCATION: 224' FNL, 2564' FEL (SEC. 19, T1N, R66W)
 BOTTOM OF PRODUCTION ZONE: 50' FNL, 2610' FEL (SEC. 18, T1N, R66W)
 BOTTOM HOLE LOCATION: 24' FNL, 2612' FEL (SEC. 18, T1N, R66W)

PARSNIP FED 20-18HZ
 SURFACE HOLE LOCATION: 1772' FSL, 282' FWL (SEC. 20, T1N, R66W)
 HEEL LOCATION: 227' FNL, 2146' FEL (SEC. 19, T1N, R66W)
 BOTTOM OF PRODUCTION ZONE: 121' FNL, 2132' FEL (SEC. 18, T1N, R66W)
 BOTTOM HOLE LOCATION: 44' FNL, 2132' FEL (SEC. 18, T1N, R66W)

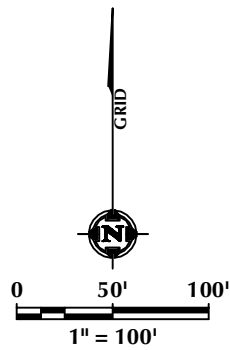
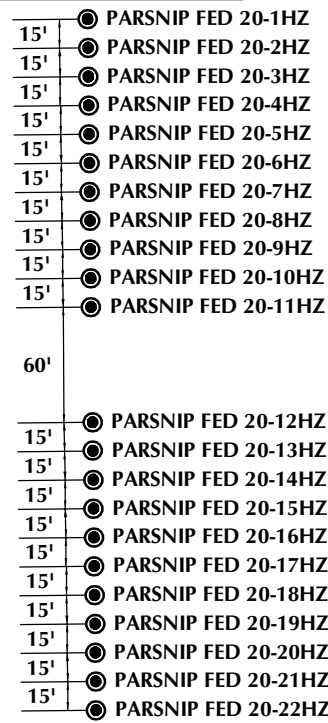
PARSNIP FED 20-19HZ
 SURFACE HOLE LOCATION: 1757' FSL, 282' FWL (SEC. 20, T1N, R66W)
 HEEL LOCATION: 230' FNL, 1668' FEL (SEC. 19, T1N, R66W)
 BOTTOM OF PRODUCTION ZONE: 50' FNL, 1652' FEL (SEC. 18, T1N, R66W)
 BOTTOM HOLE LOCATION: 24' FNL, 1652' FEL (SEC. 18, T1N, R66W)

PARSNIP FED 20-20HZ
 SURFACE HOLE LOCATION: 1742' FSL, 282' FWL (SEC. 20, T1N, R66W)
 HEEL LOCATION: 230' FNL, 1187' FEL (SEC. 19, T1N, R66W)
 BOTTOM OF PRODUCTION ZONE: 51' FNL, 1172' FEL (SEC. 18, T1N, R66W)
 BOTTOM HOLE LOCATION: 24' FNL, 1172' FEL (SEC. 18, T1N, R66W)

PARSNIP FED 20-21HZ
 SURFACE HOLE LOCATION: 1727' FSL, 282' FWL (SEC. 20, T1N, R66W)
 HEEL LOCATION: 229' FNL, 707' FEL (SEC. 19, T1N, R66W)
 BOTTOM OF PRODUCTION ZONE: 121' FNL, 691' FEL (SEC. 18, T1N, R66W)
 BOTTOM HOLE LOCATION: 45' FNL, 691' FEL (SEC. 18, T1N, R66W)

PARSNIP FED 20-22HZ
 SURFACE HOLE LOCATION: 1712' FSL, 282' FWL (SEC. 20, T1N, R66W)
 HEEL LOCATION: 230' FNL, 227' FEL (SEC. 19, T1N, R66W)
 BOTTOM OF PRODUCTION ZONE: 61' FNL, 211' FEL (SEC. 18, T1N, R66W)
 BOTTOM HOLE LOCATION: 25' FNL, 211' FEL (SEC. 18, T1N, R66W)

WELL HEAD SPACING DETAIL



WELL PAD - PARSNIP FED HZ	
DIRECTIONAL WELL PLAT (ECMC) / MULTI-WELL PLAN (OGED) PARSNIP FED 20-1HZ, PARSNIP FED 20-2HZ, PARSNIP FED 20-3HZ, PARSNIP FED 20-4HZ, PARSNIP FED 20-5HZ, PARSNIP FED 20-6HZ, PARSNIP FED 20-7HZ, PARSNIP FED 20-8HZ, PARSNIP FED 20-9HZ, PARSNIP FED 20-10HZ, PARSNIP FED 20-11HZ, PARSNIP FED 20-12HZ, PARSNIP FED 20-13HZ, PARSNIP FED 20-14HZ, PARSNIP FED 20-15HZ, PARSNIP FED 20-16HZ, PARSNIP FED 20-17HZ, PARSNIP FED 20-18HZ, PARSNIP FED 20-19HZ, PARSNIP FED 20-20HZ, PARSNIP FED 20-21HZ & PARSNIP FED 20-22HZ SECTIONS 18, 19, 20, 29 & 30, T1N, R66W & SECTION 25, T1N, R67W 6TH P.M. WELD COUNTY, COLORADO	

609 CONSULTING, LLC

LOVELAND OFFICE 6706 North Franklin Avenue Loveland, Colorado 80538 Phone 970-776-4331	SHERIDAN OFFICE 1095 Saberton Avenue Sheridan, Wyoming 82801 Phone 307-674-0609
---	--

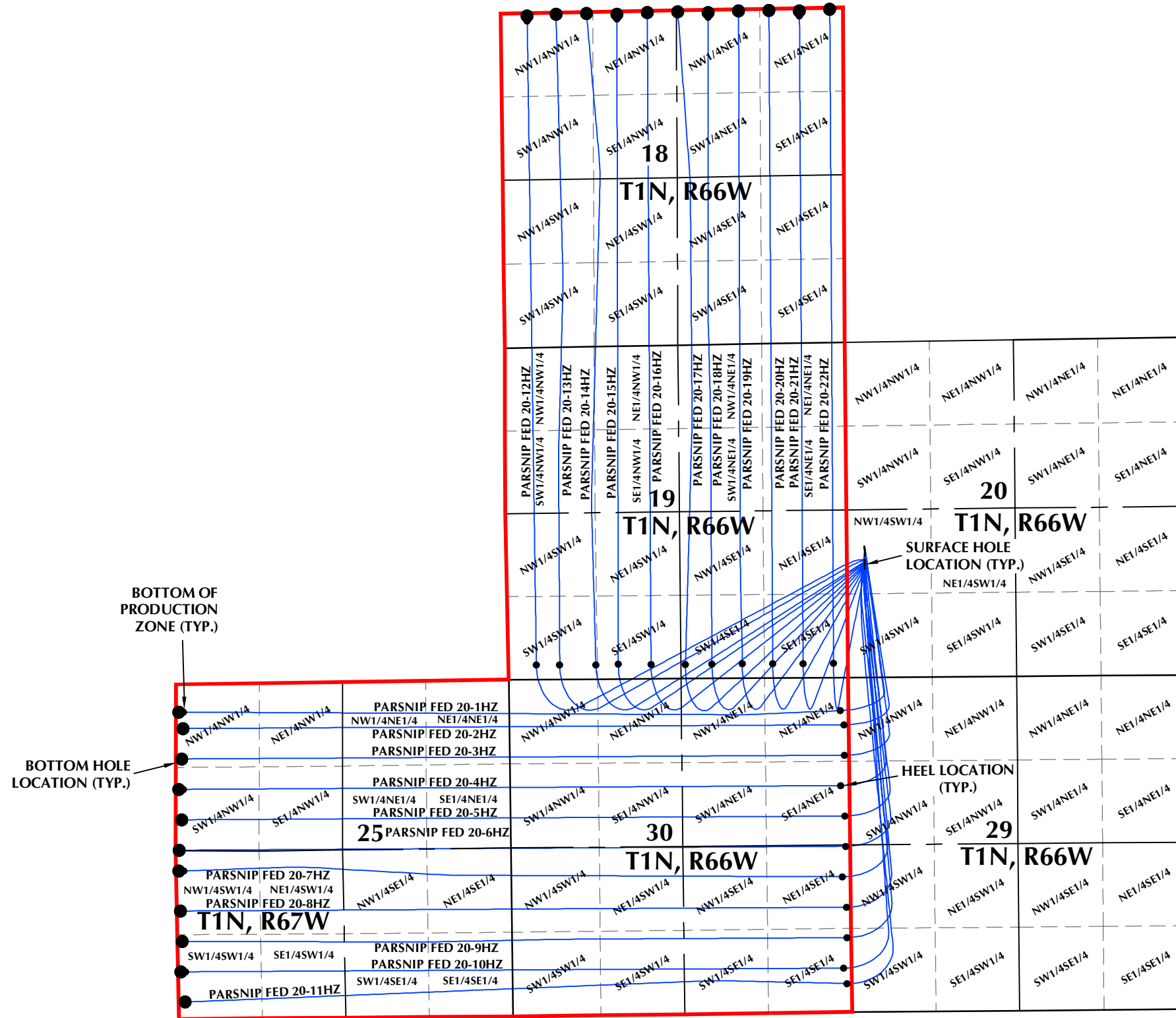
**Kerr-McGee Oil &
 Gas Onshore LP**

1099 18th Street
 Denver, Colorado 80202

DRAFTED BY: SJM	CHECKED BY: RKF	SHEET NO: 1B
DATE DRAFTED: 11/13/24	DATE SURVEYED: 9/18/24	1B OF 1
REVISED:	FILE NAME: 23-174	

K:\AMADOR\2023\2023_174_PARSNIP_T1N_R66W_SEC_20\PLANS\PARSNIP\PARSNIP.dwg, 11/14/2024 7:55:17 AM, smkr

DIRECTIONAL WELL PLAT (ECMC) / MULTI-WELL PLAN (OGED) SECTIONS 18, 19, 20, 29 & 30, T1N, R66W & SECTION 25, T1N, R67W 6TH P.M. WELD COUNTY, COLORADO



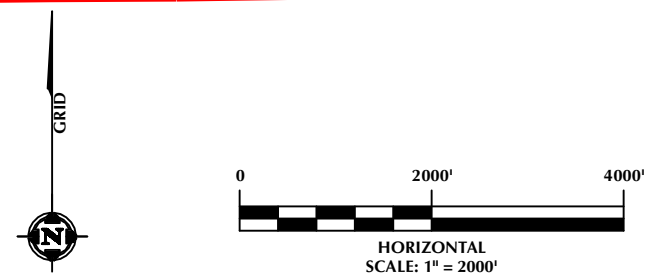
BOTTOM OF PRODUCTION ZONE (TYP.)

BOTTOM HOLE LOCATION (TYP.)

SURFACE HOLE LOCATION (TYP.)

HEEL LOCATION (TYP.)

- LEGEND:**
- DSU BOUNDARY
 - WELLBORE TRAJECTORY
 - HEEL LOCATION/BOTTOM OF PRODUCTION ZONE
 - BOTTOM HOLE LOCATION



LOVELAND OFFICE
6706 North Franklin Avenue
Loveland, Colorado 80538
Phone 970-776-4331

SHERIDAN OFFICE
1095 Saberton Avenue
Sheridan, Wyoming 82801
Phone 307-674-0609

CONSULTING, LLC

**Kerr-McGee Oil &
Gas Onshore LP**
1099 18th Street
Denver, Colorado 80202

WELL PAD - PARSNIP FED HZ			
DIRECTIONAL WELL PLAT (ECMC) / MULTI-WELL PLAN (OGED) PARSNIP FED 20-1HZ, PARSNIP FED 20-2HZ, PARSNIP FED 20-3HZ, PARSNIP FED 20-4HZ, PARSNIP FED 20-5HZ, PARSNIP FED 20-6HZ, PARSNIP FED 20-7HZ, PARSNIP FED 20-8HZ, PARSNIP FED 20-9HZ, PARSNIP FED 20-10HZ, PARSNIP FED 20-11HZ, PARSNIP FED 20-12HZ, PARSNIP FED 20-13HZ, PARSNIP FED 20-14HZ, PARSNIP FED 20-15HZ, PARSNIP FED 20-16HZ, PARSNIP FED 20-17HZ, PARSNIP FED 20-18HZ, PARSNIP FED 20-19HZ, PARSNIP FED 20-20HZ, PARSNIP FED 20-21HZ & PARSNIP FED 20-22HZ SECTIONS 18, 19, 20, 29 & 30, T1N, R66W & SECTION 25, T1N, R67W 6TH P.M. WELD COUNTY, COLORADO			
DRAFTED BY:	SJM	CHECKED BY:	RKF
DATE DRAFTED:	11/13/24	DATE SURVEYED:	9/18/24
REVISED:		FILE NAME:	23-174
			SHEET NO: 1C 1C OF 1

K:\WADARCO\2023\174_PARSNIP_T1N_R66W_SEC_20\PLANS\PARSNIP\PARSNIP.dwg, 11/14/2024 7:54:49 AM, smfkr