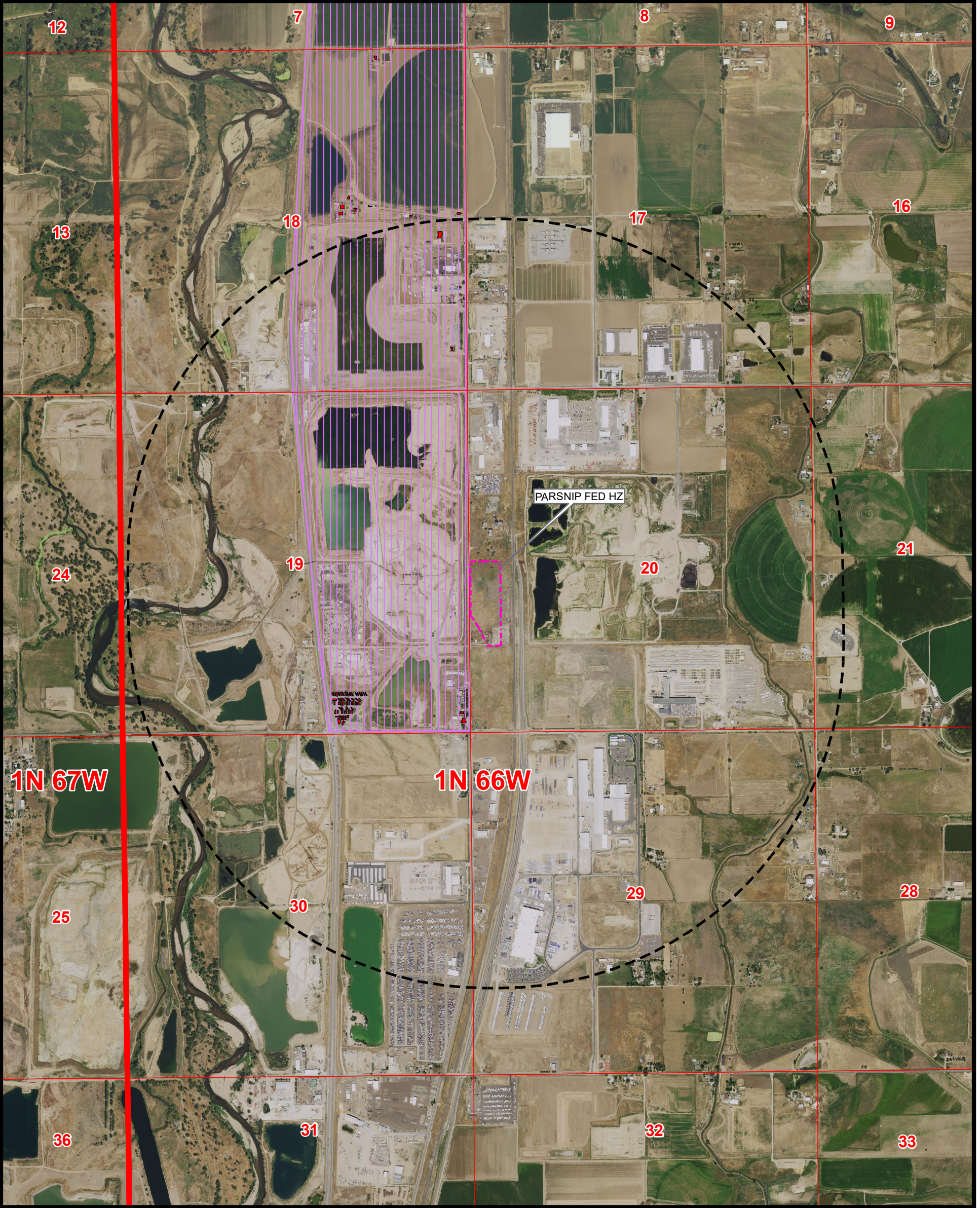



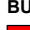




DISPROPORTIONATELY IMPACTED COMMUNITIES MAP
PARSNIP FED HZ

SECTION 20, TOWNSHIP 1 NORTH, RANGE 66 WEST, 6TH P.M., WELD COUNTY, COLORADO



Legend

-  PROPOSED OIL & GAS LOCATION
-  1 MILE BUFFER - OIL & GAS LOCATION
-  DISPROPORTIONATELY IMPACTED COMMUNITY
- BUILDINGS WITHIN DISPROPORTIONATELY IMPACTED COMMUNITIES**
-  RESIDENTIAL BUILDING UNIT (60)
-  HIGH OCCUPANCY BUILDING UNIT (0)
-  SCHOOL FACILITY (0)

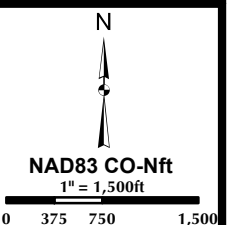
NOTE:
1. THIS MAP IS A COMPILATION OF PUBLICLY AVAILABLE DATA. THE ACCURACY AND COMPLETENESS OF SAID DATA HAS NOT BEEN VERIFIED BY 609 CONSULTING, LLC. EXISTING CONDITIONS MAY DIFFER FROM WHAT IS SHOWN.

ECMC
GIS ONLINE: https://cogccmap.state.co.us/cogcc_gis_online/

**Kerr-McGee Oil &
Gas Onshore LP**
1099 18th Street
Denver, Colorado 80202



LOVELAND OFFICE
6706 North Franklin Avenue
Loveland, Colorado 80538
Phone 970-776-4331
SHERIDAN OFFICE
1095 Saberton Avenue
Sheridan, Wyoming 82801
Phone 307-674-0609



Drawn by: SRS Date: 28 Oct 2024
Revised: Date: