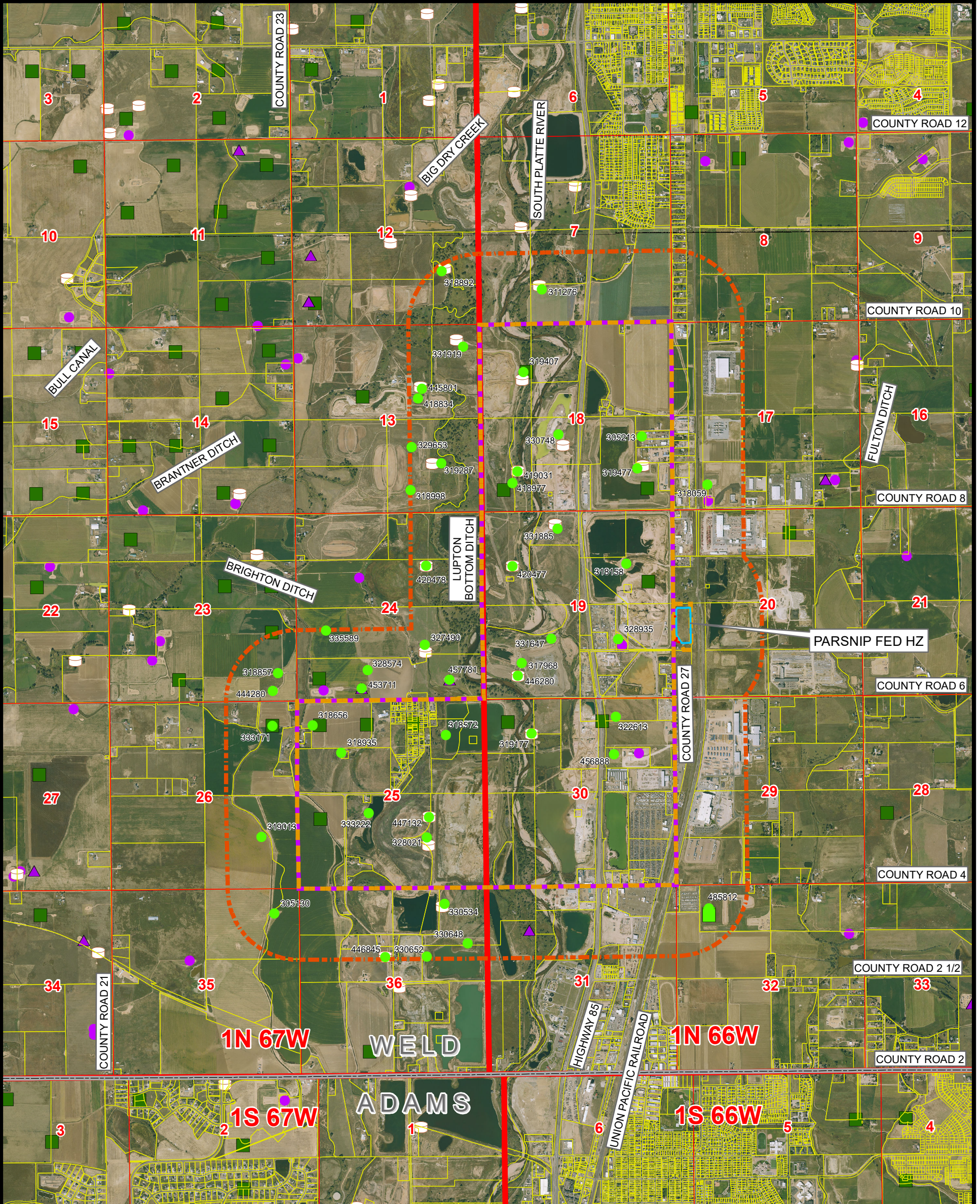


PARSNIP FED HZ OGDP RELATED LOCATION & FLOWLINE MAP
PARSNIP FED HZ
SECTION 20, TOWNSHIP 1 NORTH, RANGE 66 WEST, 6TH P.M., WELD COUNTY, COLORADO



K:\ANADARKO\2023\2023_174_PARSNIP_1N_R66W_SEC_20\GIS\FORM 2A\PARSNIP_FED_HZ_RELATED_LOCATION_FLOWLINE_MAP.mxd 10/27/2024 9:37:53 PM

Legend

- - - PROPOSED ACCESS ROAD
- PROPOSED WORKING PAD SURFACE
- PROPOSED OGDP BOUNDARY
- PROPOSED MINERAL BOUNDARY
- 200' BUFFER - PROPOSED OGDP BOUNDARY
- PARCEL BOUNDARY
- COUNTY BOUNDARY
- ACTIVE LOCATION
- VISIBLE LOCATION ON AERIAL NOT IN ECMC GIS
- ◆ PENDING LOCATION PERMIT (FORM 2A)
- APPROVED LOCATION PERMIT (FORM 2A)
- APPROVED WELL PERMIT (FORM 2)
- PENDING WELL PERMIT (FORM 2)
- ▲ WELD OIL AND GAS LOCATION ASSESSMENT (WOGLA)
- TANK BATTERY
- CLOSED PIT

NOTE: THIS MAP IS A COMPILATION OF PUBLICLY AVAILABLE DATA. THE ACCURACY AND COMPLETENESS OF SAID DATA HAS NOT BEEN VERIFIED BY 609 CONSULTING, LLC. EXISTING CONDITIONS MAY DIFFER FROM WHAT IS SHOWN.

Kerr-McGee Oil & Gas Onshore LP
 1099 18th Street
 Denver, Colorado 80202

 609 Consulting, LLC	LOVELAND OFFICE 6706 North Franklin Avenue Loveland, Colorado 80538 Phone 970-776-4331	N  NAD83 CO-Nft Scale: 1" = 2,500ft
	SHERIDAN OFFICE 1095 Saberton Avenue Sheridan, Wyoming 82801 Phone 307-674-0609	
Drawn by: AK Revised:	Date: 25 Oct 2024 Date:	1 Sheet of 2

**PARSNIP FED HZ OGDG RELATED LOCATION & FLOWLINE MAP
PARSNIP FED HZ**

SECTION 20, TOWNSHIP 1 NORTH, RANGE 66 WEST, 6TH P.M., WELD COUNTY, COLORADO

LOCATION ID	LOCATION NAME	LOCATION NUMBER	OPERATOR NAME
305130	SAKATA-61N67W	35NENE	KERR MCGEE OIL & GAS ONSHORE LP
305213	REISBECK-61N66W	18NESE	KERR MCGEE OIL & GAS ONSHORE LP
311276	BOULDER BANK-61N66W	7SESW	CRESTONE PEAK RESOURCES OPERATING LLC
317968	RIVERBEND	25-19	KERR MCGEE OIL & GAS ONSHORE LP
318059	VILLANO FED	18N-17HZ	KERR MCGEE OIL & GAS ONSHORE LP
318158	TED ADAMS GAS UNIT-61N66W	19SENE	KERR MCGEE OIL & GAS ONSHORE LP
318572	PERRY-61N67W	25NENE	M E III CORPORATION
318656	DITIRRO, JOHN-61N67W	25NWNW	TOP OPERATING COMPANY
318857	WATTENBERG, HENRY E. UNIT-61N67W	23SESE	KP KAUFFMAN COMPANY INC
318892	JAMES N. MATHISEN UNIT B-61N67W	12NESE	KERR MCGEE OIL & GAS ONSHORE LP
318935	PERRY-61N67W	25SWNW	M E III CORPORATION
318998	KIEFER, GEORGE W. UNIT-61N67W	13SWSE	KP KAUFFMAN COMPANY INC
319013	GRENEMEYER E UNIT-61N67W	26NESE	CRESTONE PEAK RESOURCES OPERATING LLC
319177	PERRY-61N66W	30NWNW	KERR MCGEE OIL & GAS ONSHORE LP
319287	KIEFER POOLING UNIT-61N67W	13NESE	KERR MCGEE OIL & GAS ONSHORE LP
319407	HELMER GETZ UNIT TRUE-61N66W	18SWNW	KERR MCGEE OIL & GAS ONSHORE LP
319477	DENVER	36-18	KERR MCGEE OIL & GAS ONSHORE LP
322613	BRANCUCCI-61N66W	30NWNW	KERR MCGEE OIL & GAS ONSHORE LP
327490	GEORGE STIEBER UNIT A-61N67W	24NWSE	KERR MCGEE OIL & GAS ONSHORE LP
328021	W. DOUGLAS REED-61N67W	25NWSE	KERR MCGEE OIL & GAS ONSHORE LP
328574	STIEBER-61N67W	24SESW	KP KAUFFMAN COMPANY INC
328935	WATADA RED-61N66W	19NWSE	KERR MCGEE OIL & GAS ONSHORE LP
329653	LEWIS TRUST-61N67W	13NWSE	KP KAUFFMAN COMPANY INC
330534	BAURER-61N67W	36NENE	KP KAUFFMAN COMPANY INC
330648	EIBERGER-61N67W	36SENE	KP KAUFFMAN COMPANY INC
330652	EIBERGER-61N67W	36SWNE	KP KAUFFMAN COMPANY INC
330748	HSR-WATADA-61N66W	18NESW	KERR MCGEE OIL & GAS ONSHORE LP
331647	RITTENHOUSE-61N66W	19NESW	KERR MCGEE OIL & GAS ONSHORE LP
331885	OCKER-61N66W	19NENW	KERR MCGEE OIL & GAS ONSHORE LP
331919	RIVERBEND	4-18	KERR MCGEE OIL & GAS ONSHORE LP
333171	MOSER-61N67W	26NENE	ENCANA OIL & GAS (USA) INC
333222	BRIGGS-61N67W	25NESW	KP KAUFFMAN COMPANY INC
335589	STIEBER GEORGE B-61N67W	24NWSW	KERR MCGEE OIL & GAS ONSHORE LP
418834	RIVERBEND	21-13	KERR MCGEE OIL & GAS ONSHORE LP
418977	RIVERBEND	22-18	KERR MCGEE OIL & GAS ONSHORE LP
419031	RIVERBEND TANK BATTERY	22-18	KERR MCGEE OIL & GAS ONSHORE LP
420477	RIVERBEND TANK BATTERY	5-19	KERR MCGEE OIL & GAS ONSHORE LP
420478	RIVERBEND TANK BATTERY	2-24	KERR MCGEE OIL & GAS ONSHORE LP
444280	MEESE	16N-35HZ	KERR MCGEE OIL & GAS ONSHORE LP
445801	CHIKUMA 1-13A&HARRY O SA	34002261	KERR MCGEE OIL & GAS ONSHORE LP
446280	DAMIANA FRANK GU 1/RIVERBEND O SA	36028423	KERR MCGEE OIL & GAS ONSHORE LP
446845	SAKATA 22-36		PDC ENERGY INC
447132	BRIGGS AGGREGATE 2		PDC ENERGY INC
453711	QUARTER CIRCLE	24-8HZ	KERR MCGEE OIL & GAS ONSHORE LP
456888	SOUTH WELD SWD FACILITY		NGL WATER SOLUTIONS DJ LLC
457781	QUARTER CIRCLE	24-15HZ	KERR MCGEE OIL & GAS ONSHORE LP
485812	DITTMER	PAD	BISON IV OPERATING LLC

K:\ANADARKO\2023\174_PARSNIP_T1N_R66W_SEC_20\GIS\FORM 2A\PARSNIP_FED_HZ_RELATED_LOCATION_FLOWLINE_MAP_TABLE_1.mxd 10/27/2024 9:41:04 PM

**Kerr-McGee Oil &
Gas Onshore LP**
1099 18th Street
Denver, Colorado 80202

 609 Consulting, LLC	LOVELAND OFFICE <small>6706 North Franklin Avenue Loveland, Colorado 80538 Phone 970-776-4331</small>
	SHERIDAN OFFICE <small>1095 Saberton Avenue Sheridan, Wyoming 82801 Phone 307-674-0609</small>

NAD83 CO-Nft

Drawn by: AK
Revised:

Date: 25 Oct 2024
Date:

2 Sheet:
of 2