

THIS DRAWING AND THE DESIGN IT COVERS ARE CONFIDENTIAL AND REMAIN THE PROPERTY OF ANDARROG PETROLEUM CORPORATION AND SHALL NOT BE DISCLOSED TO OTHERS OR REPRODUCED IN ANY MANNER OR USED FOR ANY PURPOSE WHATSOEVER EXCEPT BY WRITTEN PERMISSION BY THE OWNER.

PLOT STYLE: APC_Standard.ctb

LAST SAVED: 10/15/2024 BY: Brandon Wells

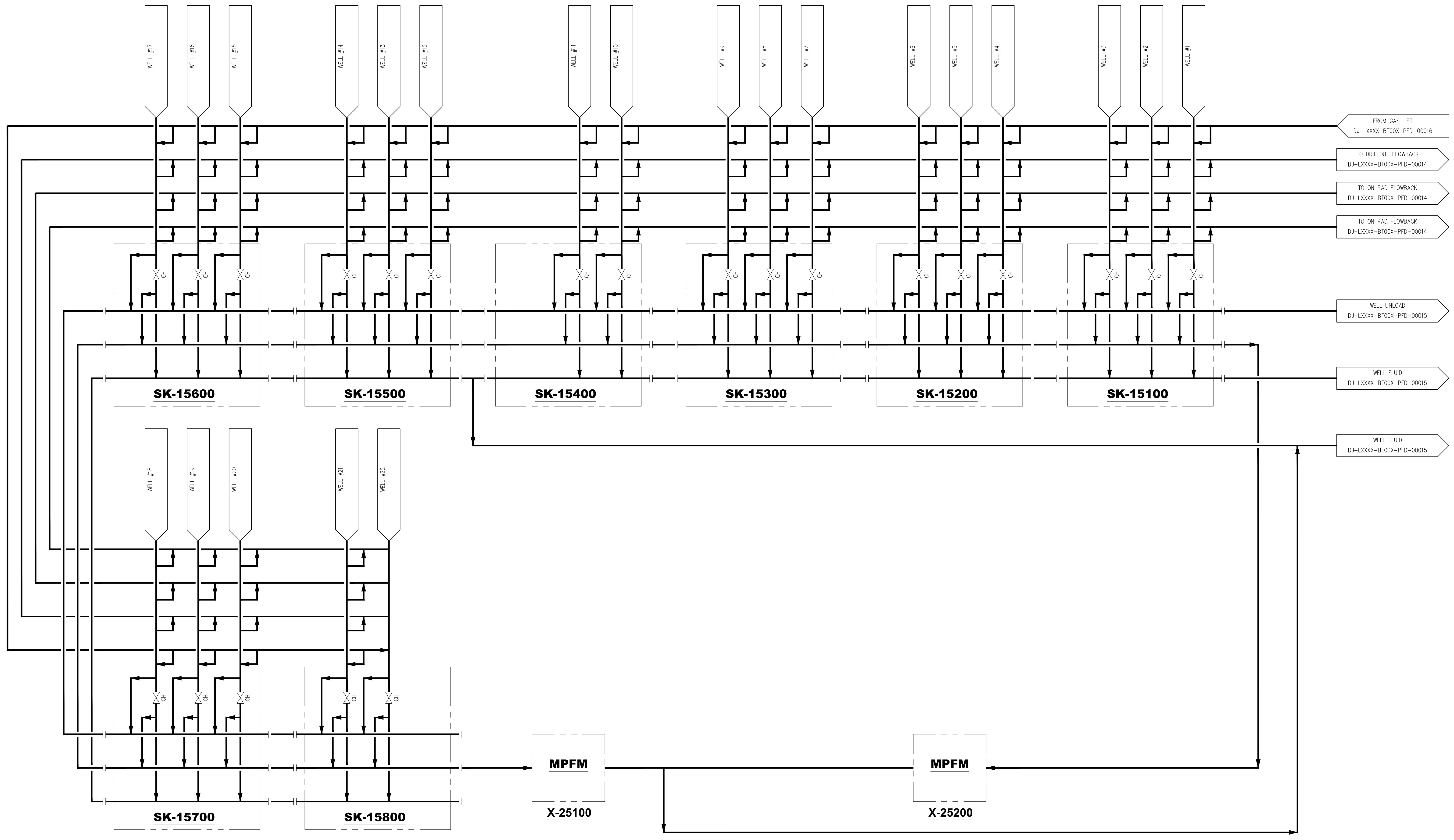
FILE LOCATION: C:\604501 - DJ Core Facilities\DJ-LXXX-BT00X - Parsnip\1 - PFD-PID\Parsnip - Working\1.01 PFD\DJ-LXXX-BT00X-PFD-00010.dwg

SK-15100-15300
WELLHEAD MANIFOLD
(3 PACK)

SK-15400/15800
WELLHEAD MANIFOLD
(2 PACK)

X-25100-25200
MPFM
MANU: AGAR

SK-15500-15700
WELLHEAD MANIFOLD
(3 PACK)



NOTES:

REFERENCE DRAWINGS	
DWG. NO.	TITLE

REVISIONS					
NO.	DESCRIPTION	DATE	CHK.	DATE	APPR.
1	RE-ISSUED FOR APPROVAL	10/15/24	JS	10/15/24	EIA
2	ISSUED FOR APPROVAL	04/02/24	JS	04/02/24	AB

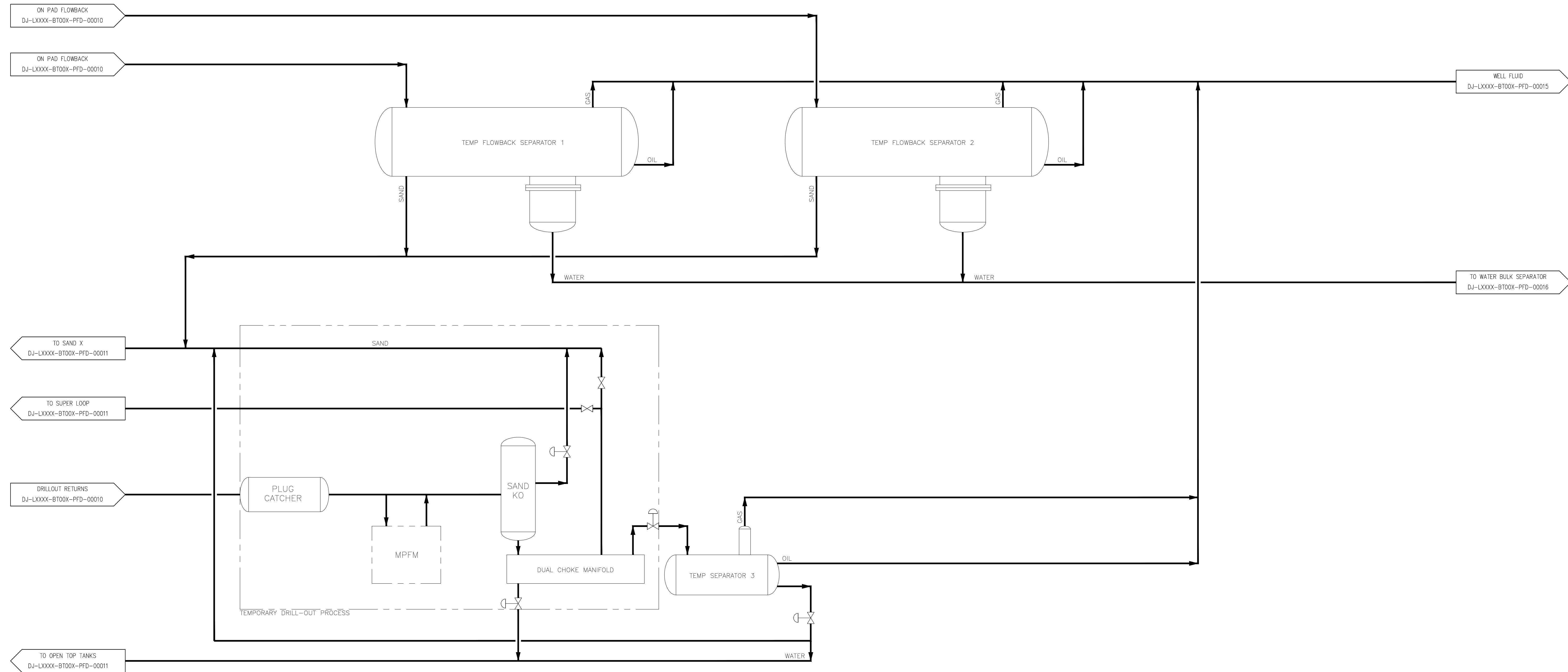
Kerr-McGee Oil & Gas Onshore LP

PARSNIP

PROCESS FLOW DIAGRAM
PRODUCTION FACILITY

DRAWN BY: LKS	CREATION DATE: 04/02/24	AFE No.: -
APPROVED: JUB	APPR. DATE: 04/02/24	
DWG. No.: DJ-LXXX-BT00X-PFD-00010		SHEET No. - OF -
SCALE: -		

THIS DRAWING AND THE DESIGN IT COVERS ARE CONFIDENTIAL AND REMAIN THE PROPERTY OF ANADARKO PETROLEUM CORPORATION AND SHALL NOT BE DISCLOSED TO OTHERS OR REPRODUCED IN ANY MANNER OR USED FOR ANY PURPOSE WHATSOEVER EXCEPT BY WRITTEN PERMISSION BY THE OWNER.



NOTES:

REFERENCE DRAWINGS	
DWG. NO.	TITLE

REVISIONS	
NO.	DESCRIPTION

Kerr-McGee Oil & Gas Onshore LP

PARSNIP

PROCESS FLOW DIAGRAM		
PRODUCTION FACILITY		
TEMPORARY FLOWBACK ON PAD		
DRAWN BY: BMW	CREATION DATE: 10/07/24	AFE No.: -
APPROVED: EJA	APPR. DATE: 10/07/24	
DWG. No.: DJ-LXXXX-BT00X-PFD-00014		SHEET No. 1
SCALE: -		- OF -

FILE LOCATION: c:\604501 - DJ Core Facilities\DJ-LXXXX-BT00X - Parsnip\1 - PFD-PID\Parsnip - Working\1.01 PFD-DJ-LXXXX-BT00X-PFD-00014.dwg
LAST SAVED: 10/15/2024 BY: Brandon Wells
PLOT STYLE: APC-Standard.ctb

THIS DRAWING AND THE DESIGN IT COVERS ARE CONFIDENTIAL AND SHALL NOT BE DISCLOSED TO OTHERS OR REPRODUCED IN ANY MANNER OR USED FOR ANY PURPOSE WHATSOEVER EXCEPT BY WRITTEN PERMISSION BY THE OWNER.

**V-20100/20200
PRODUCTION SEPARATOR**

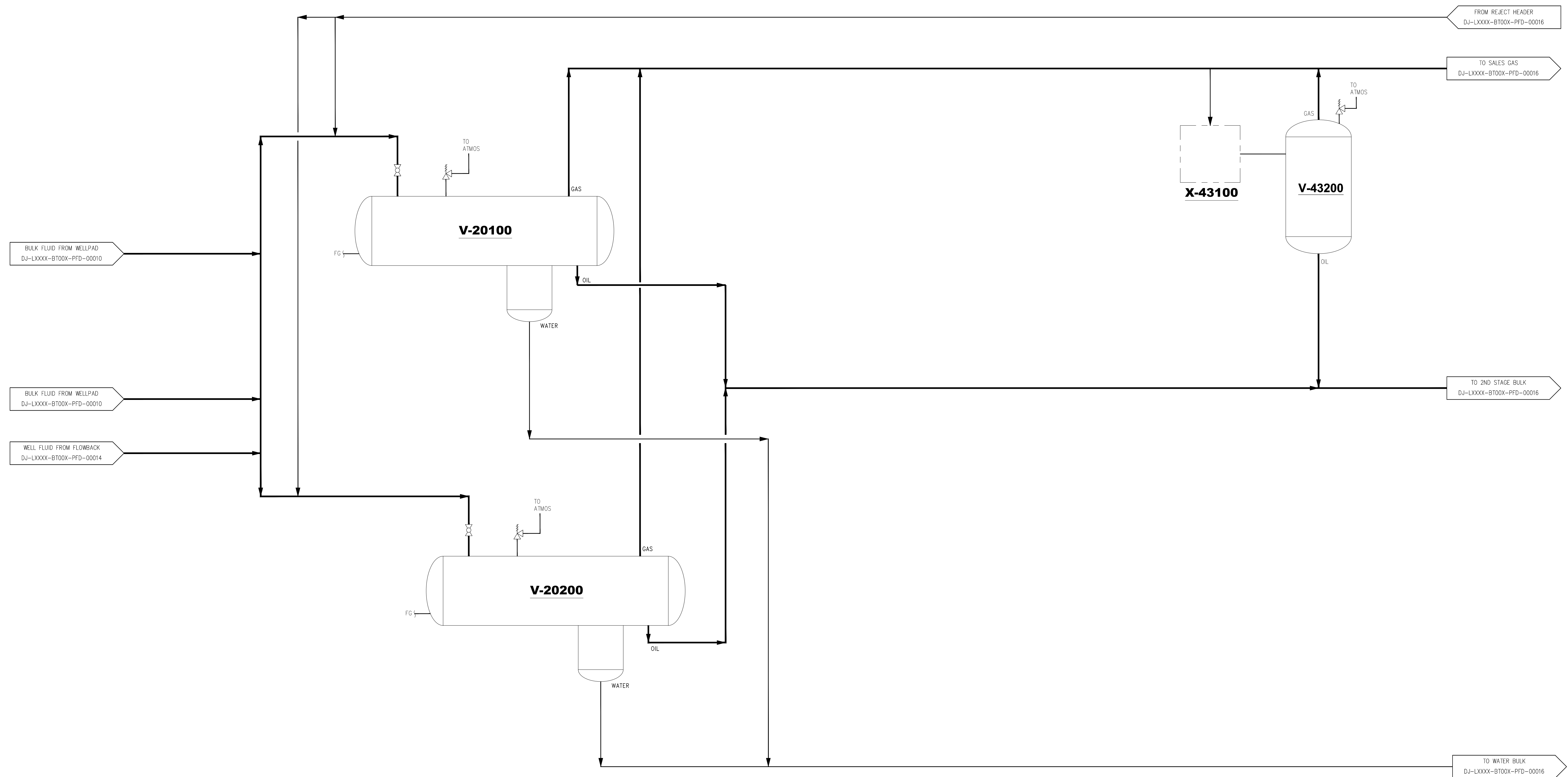
MAMP: 400 PSIG @ 350°F
MDMT: -20°F @ 400 PSI
48" OD X 16' S/S
BURNER: 750 MBTU/HR

**X-43100
GAS COOLER**

DUTY: 0.326 MMBTU/HR
MAMP: 400 PSIG @ -40/350°F

**V-43200
GAS SCRUBBER**

SIZE: 48" OD X 8' S/S
DESIGN: 400 PSIG @ -20/400°F



NOTES:

DWG. NO.	TITLE

NO.	DESCRIPTION	BY	CHK.	DATE	DATE	DATE

Kerr-McGee Oil & Gas Onshore LP

PARSNIP

PROCESS FLOW DIAGRAM PRODUCTION FACILITY		
DRAWN BY: LKS	CREATION DATE: 04/02/24	AFE No.: -
APPROVED: JJB	APPR. DATE: 04/02/24	
DWG. No.: DJ-LXXXX-BT00X-PFD-00015		SHEET No. B
SCALE: -		- OF -

FILE LOCATION: 0:\604501 - DJ Core Facilities DJ-LXXXX-BT00X - Parsnip V1 - PFD-PID Parsnip - Working\1.01 PFD\DJ-LXXXX-BT00X-PFD-00015.dwg LAST SAVED: 10/15/2024 BY: Brandon Wells PLOT STYLE: APC_Standard.ctb

