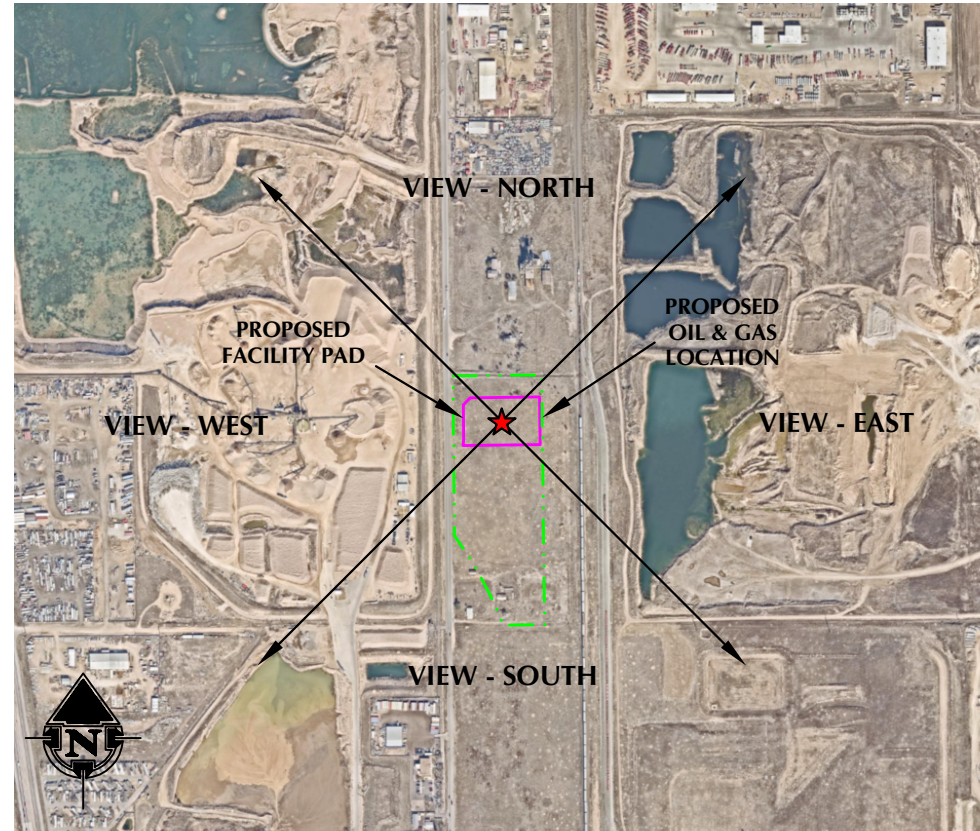


**FACILITY PAD LOCATION PICTURES  
PARSNIP FED HZ**

NW1/4 SW1/4 SECTION 20, TOWNSHIP 1 NORTH, RANGE 66 WEST, 6TH P.M., WELD COUNTY, COLORADO



LOCATION PICTURE OF PARSNIP FED HZ FACILITY PAD - CAMERA VIEW NORTH



**VIEW - OVERHEAD  
AERIAL IMAGERY COURTESY OF NEARMAP  
2024-08-20**



LOCATION PICTURE OF PARSNIP FED HZ FACILITY PAD - CAMERA VIEW EAST



LOCATION PICTURE OF PARSNIP FED HZ FACILITY PAD - CAMERA VIEW SOUTH



LOCATION PICTURE OF PARSNIP FED HZ FACILITY PAD - CAMERA VIEW WEST

K:\ANADARKO\2023\_174\_PARSNIP\_T1N\_R66W\_SEC\_20\DWG\PARSNIP\_T1N\_R66W\_SEC\_20.dwg, 10/25/2024 5:58:01 PM, sunberg



**LOVELAND OFFICE**  
6706 North Franklin Avenue  
Loveland, Colorado 80538  
Phone 970-776-4331

**SHERIDAN OFFICE**  
1095 Saberton Avenue  
Sheridan, Wyoming 82801  
Phone 307-674-0609

**CONSULTING, LLC**

**Kerr-McGee Oil &  
Gas Onshore LP**  
1099 18th Street  
Denver, Colorado 80202

DATE SURVEYED: 9/18/24  
DATE: 10/23/24  
DRAFTER: JAC  
REVISED:

**DATA SOURCES:**  
-AERIAL IMAGERY COURTESY OF NEARMAP.