

Inspection/Audit Photos

Location Name: TEP Rocky Mountain Castle Springs Federal Q Pad

Location # 418475



Photo # 3317 From entrance to location



Photo # 3318 Location

Inspection/Audit Photos

Location Name: TEP Rocky Mountain Castle Springs Federal Q Pad

Location # 418475



Photo # 3319 Location



Photo # 3320 Location

Inspection/Audit Photos

Location Name: TEP Rocky Mountain Castle Springs Federal Q Pad

Location # 418475



Photo # 3321 Location

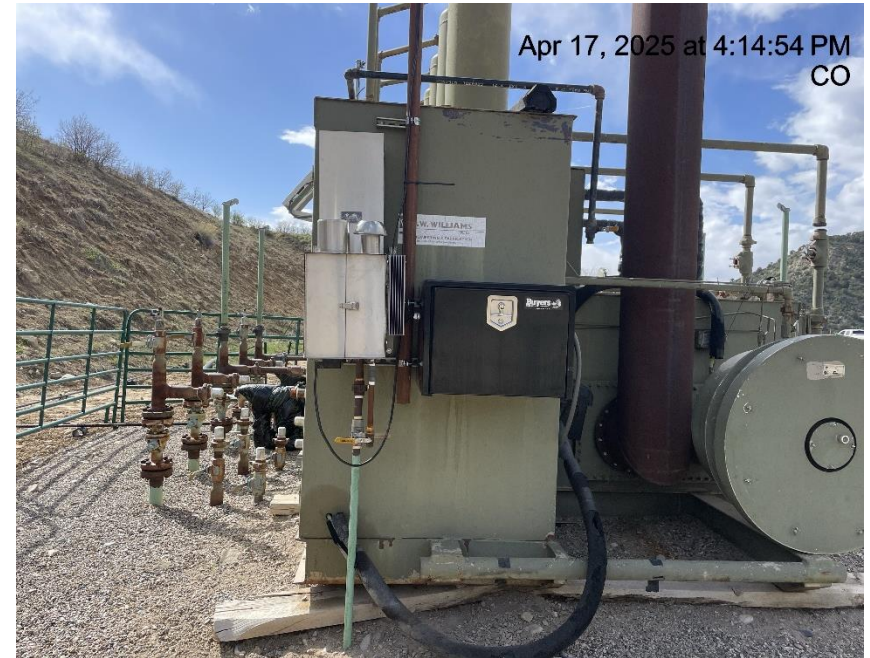


Photo # 3322 Location

Inspection/Audit Photos

Location Name: TEP Rocky Mountain Castle Springs Federal Q Pad

Location # 418475



Photo # 3323 Location



Photo # 3324 Location

Inspection/Audit Photos

Location Name: TEP Rocky Mountain Castle Springs Federal Q Pad

Location # 418475



Photo # 3325 Location



Photo # 3326 Multiple unused flowlines near separator lack lockout tagout (OOSLAT)

Inspection/Audit Photos

Location Name: TEP Rocky Mountain Castle Springs Federal Q Pad

Location # 418475



Photo # 3327 Multiple unused flowlines near separator lack lockout tagout (OOSLAT)

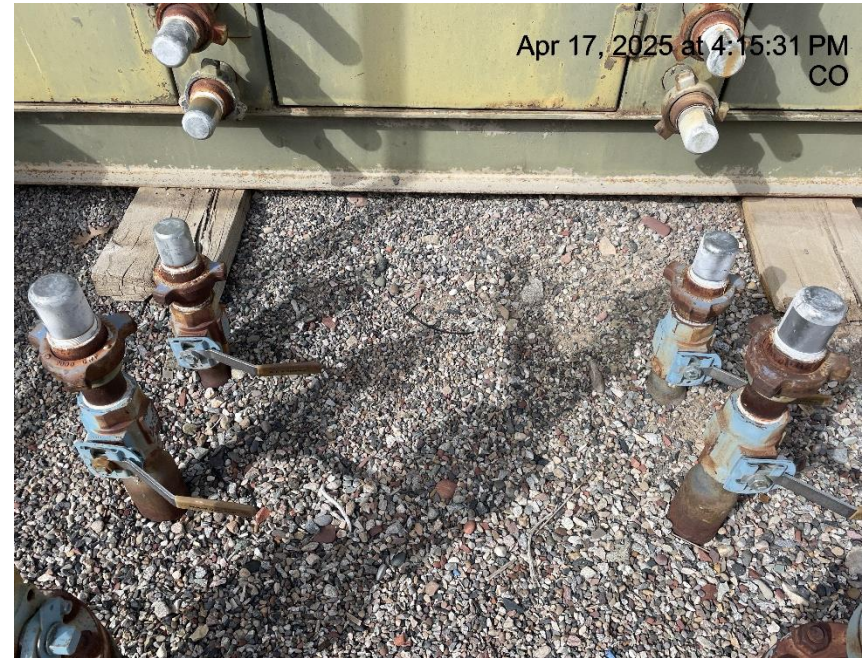


Photo # 3328 Multiple unused flowlines near separator lack lockout tagout (OOSLAT)

Inspection/Audit Photos

Location Name: TEP Rocky Mountain Castle Springs Federal Q Pad

Location # 418475



Photo # 3329 Two small rolls of barbed wire in the interim area



Photo # 3330 All 4 production tanks have TEP emergency # however 2 tanks also have labels with an emergency # that is disconnected & not in service