



## CERTIFICATE OF SURVEY

for

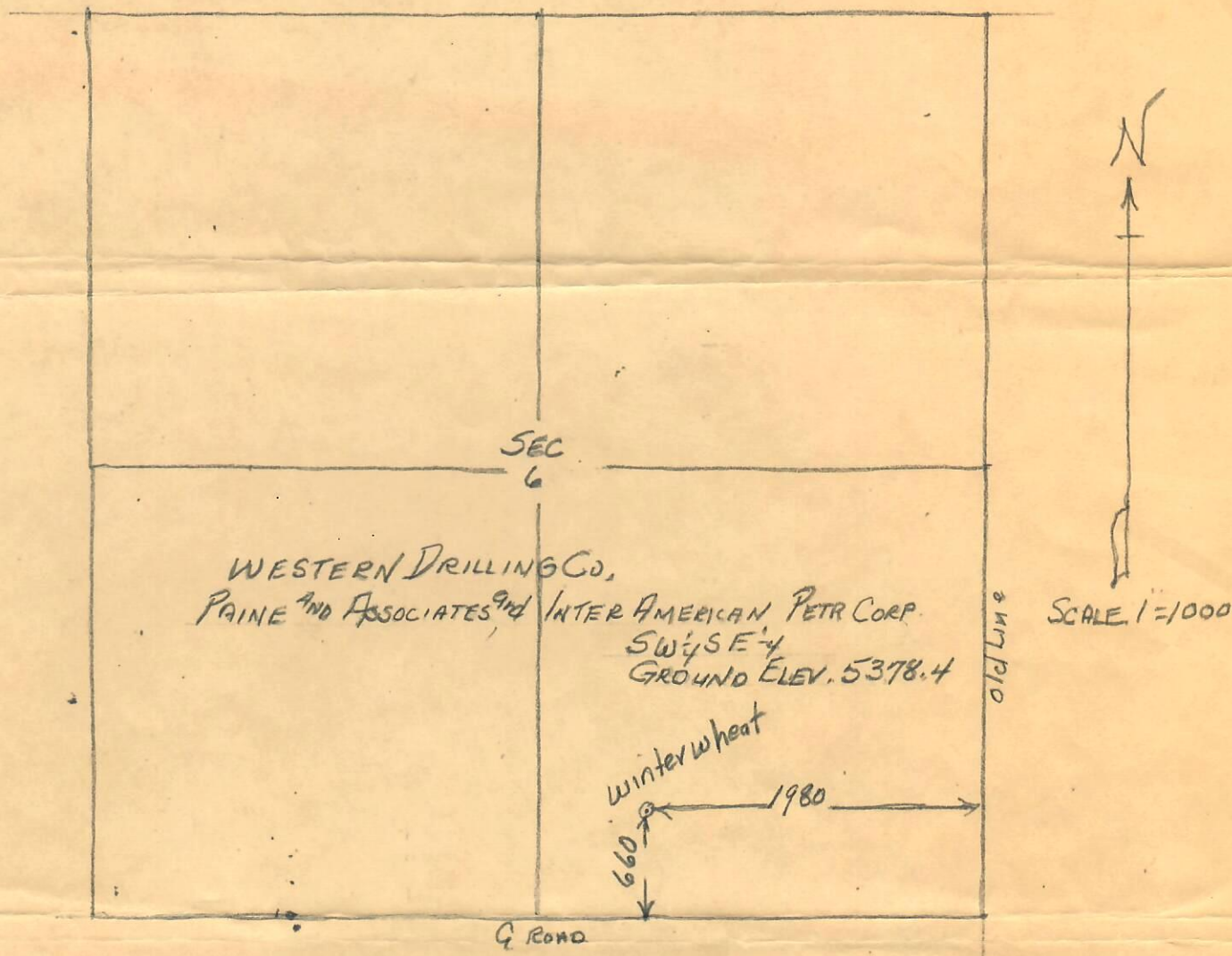
Western Drilling Co., Paine and Associates  
Inter American Petroleum Corp.  
Adams County, Colorado

RECEIVED

OCT 16 1972

OIL &amp; GAS COM. COMM.

T3S R6SW 6PM



I hereby certify that the above plat is an accurate representation of a correct survey showing the location of Western Drilling Co., Paine and Associates Inter American Petr. Corp. No. 1 Oilwell in SW 1/4 SE 1/4 Sec. 6 T3S R6SW 6PM. The elevation of the ground at the stake is 5378.4 feet above sea level from U.S.G.S. Bench Mark.

Fort Morgan, Colorado  
July 2, 1972

*Paul Osborne*  
Registered Professional Engineer  
State of Colorado

72-213