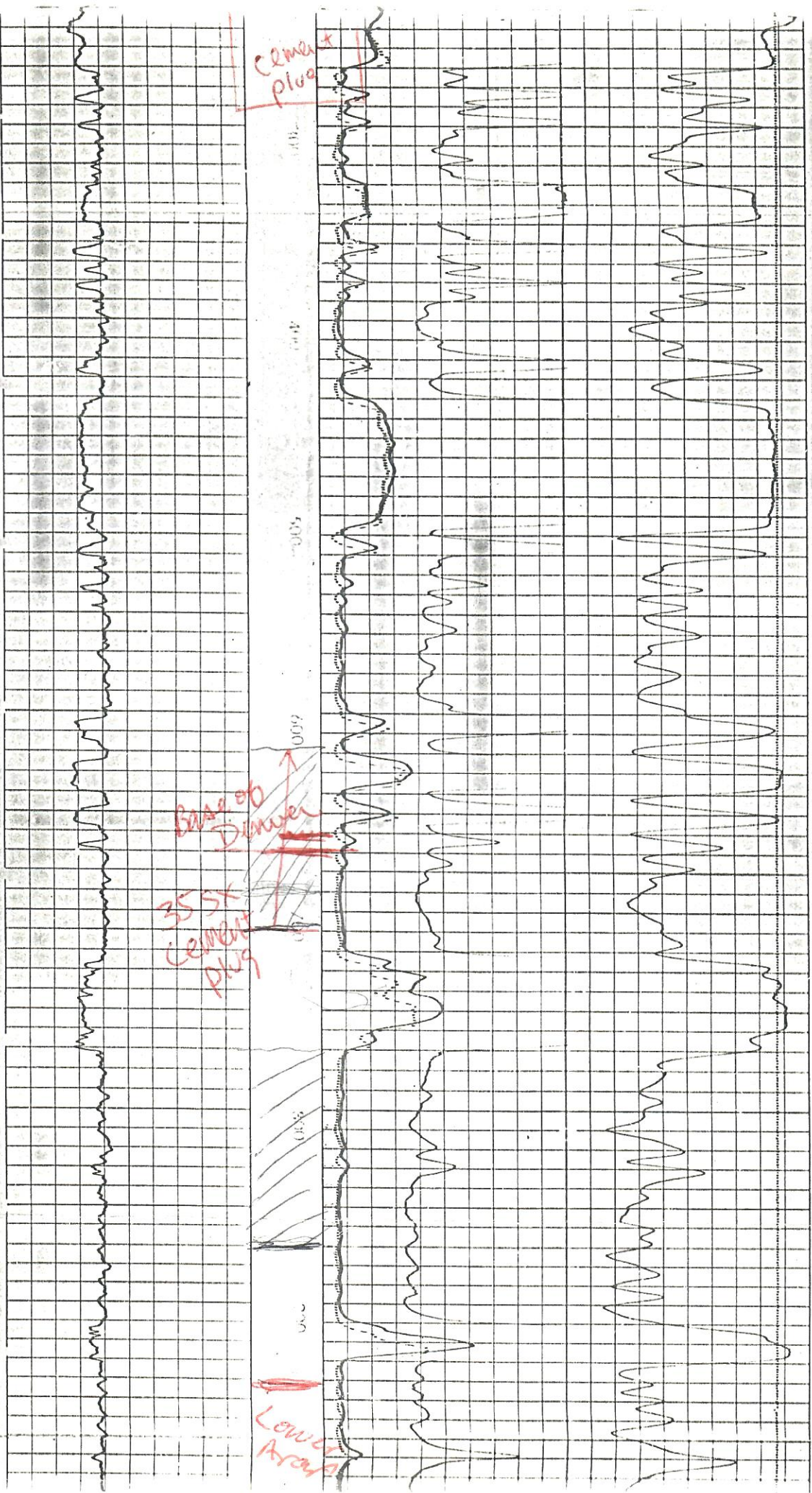


FOLD HERE									
Service Ticket No. 028732 Remarks:									
Change in Mud Type or Additional Samples				SCALE CHANGES					
Date	Sample No.			Type Log	Depth	Scale Up Hole	Scale Down Hole		
Depth—Driller				<i>DIGL</i>		<i>NO CHANGES</i>			
Type Fluid in Hole									
Dens.	Visc.								
ph	Fluid Loss		ml						
Source of Sample				EQUIPMENT DATA					
R _m @ Meas. Temp.	@	°F	@	F	Run No.	Tool Type and No.	Pad Type	Tool Position	Other
R _{mt} @ Meas. Temp.	@	°F	@	F	<i>ONE</i>	<i>GRD 172</i>		<i>CENT</i>	
R _{mc} @ Meas. Temp.	@	°F	@	F					
Source: R _{mt}	R _{mc}								
R _m @ BHT	<i>1.32</i>	@ <i>195</i>	@	F					
R _{mt} BHT	<i>1.06</i>	@ <i>195</i> °F	@	F					
R _{mc} BHT	<i>1.57</i>	@ <i>195</i> °F	@	F					
<p>Wellco does not guarantee the accuracy of any interpretation of log data, conversion of log data to physical rock parameters, or recommendations which may be given by Wellco personnel or which may appear on the log or in any other form. Any user of such data, interpretations, conversions, or recommendations agrees that Wellco is not responsible, except where due to gross negligence or willful misconduct of Wellco. Data are the experience of the user and not of Wellco.</p>									

POTENTIAL MILLIVOLTS		RESISTIVITY OHMS M ² /M		CONDUCTIVITY M MHOS/M	
- →	10 ← +	0	GUARD 50	500	Induction 0
		0	500	1000	500
		0	AMP GUARD 10		
		0	Induction 50		RESISTIVITY OHMS M ² /M
		0	500		

Rmf 1.06 at 195 °F.



Cement Plug

Base of Driller
355X Cement Plug

Lower Kraya

