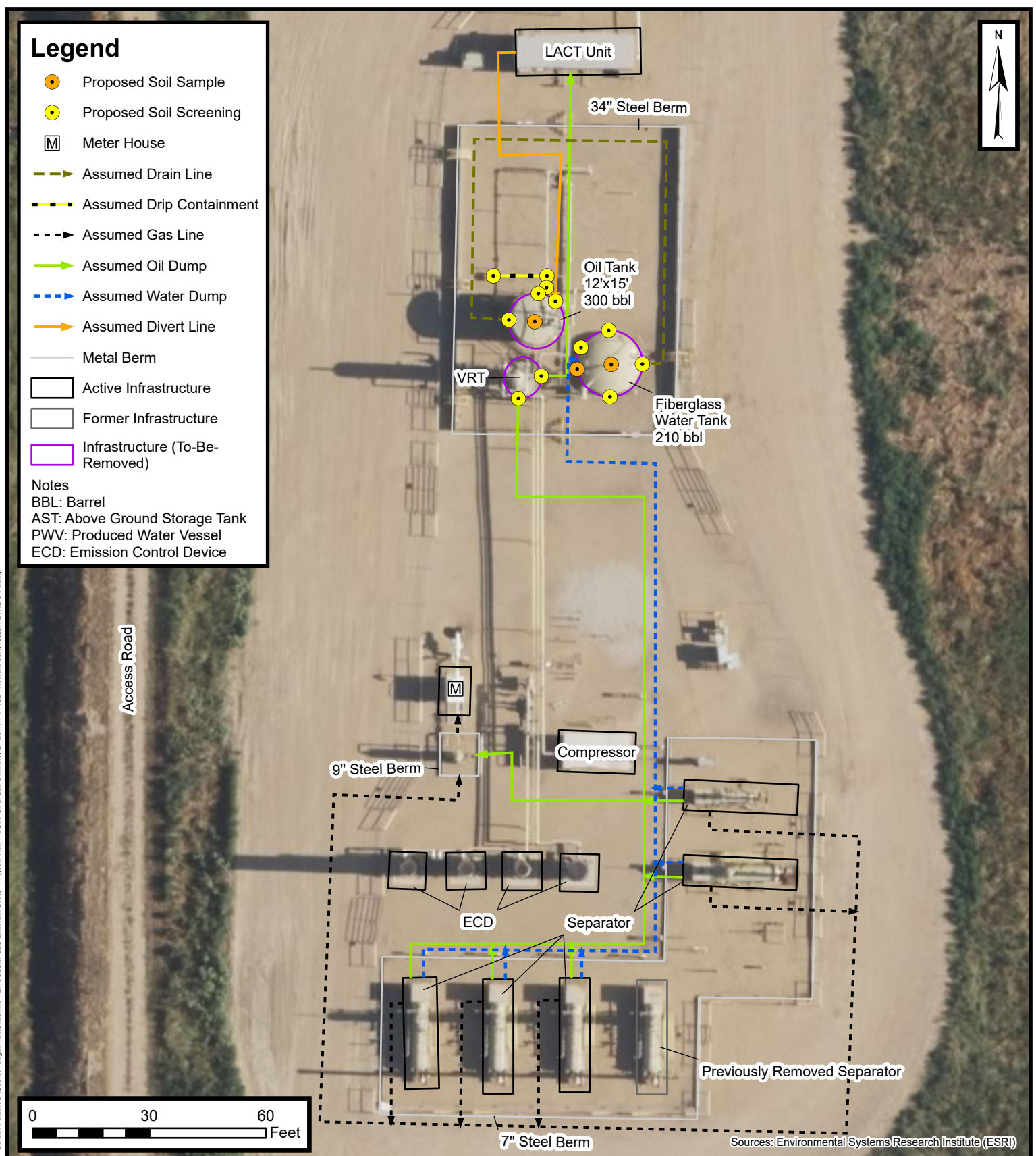


# Legend

- Proposed Soil Sample
  - Proposed Soil Screening
  - M Meter House
  - Assumed Drain Line
  - Assumed Drip Containment
  - Assumed Gas Line
  - Assumed Oil Dump
  - Assumed Water Dump
  - Assumed Divert Line
  - Metal Berm
  - Active Infrastructure
  - Former Infrastructure
  - Infrastructure (To-Be-Removed)
- Notes  
 BBL: Barrel  
 AST: Above Ground Storage Tank  
 PWV: Produced Water Vessel  
 ECD: Emission Control Device



Default Folder: C:\Users\Margan.Talbot\OneDrive - ENSOLUM, LLC\Ensolium\GIS\0 - Projects\Kerr-McGee Oil & Gas Onshore, LP\09A14171102 - Howard 30N,4C,29N-21HZ O Facility

Sources: Environmental Systems Research Institute (ESRI)



**Proposed Facility Closure and  
Soil Sampling Locations Map**  
 Howard 30N,4C,29N-21HZ O Facility  
 Kerr-McGee Oil & Gas Onshore, LP  
 SESW SEC 21-T1N-R67W  
 Weld County, CO

Project Number: 09A14171102

**FIGURE  
2**