

Figure 3
SOIL CHEMISTRY MAP

Noble Energy, Inc.
Bernhardt 64N67W 13NWNE
NWNE Sec. 13, T4N, R67W, 6th PM
Weld County, Colorado
40.316842°, -104.836827°

Project # CO23-131	API #	Facility # 329441	REMONT ENVIRONMENTAL
Date 4/10/25	Remediation # 27437	Filename 23131Q1	

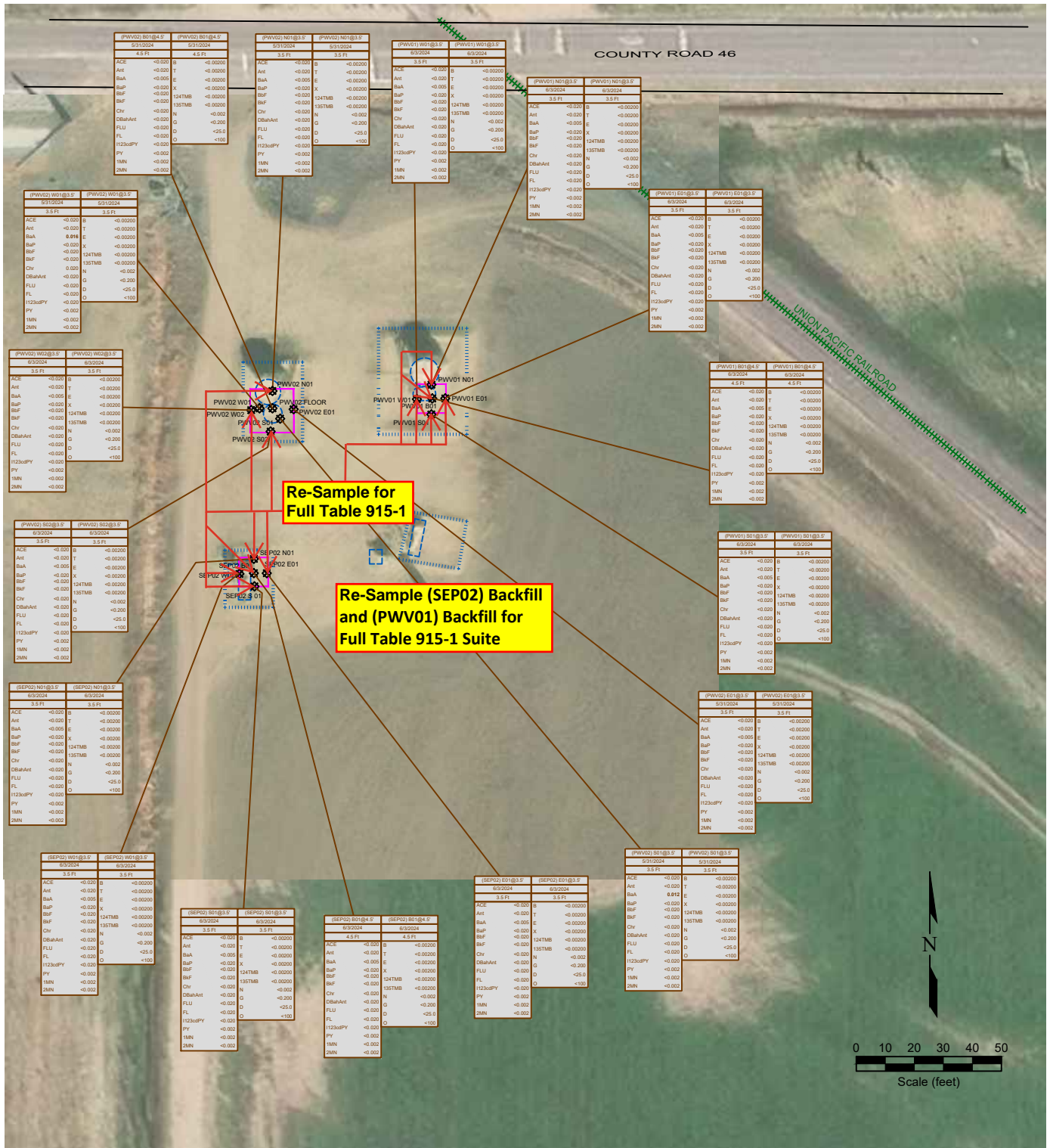


Figure 2
PROPOSED SITE INVESTIGATION PLAN

Noble Energy, Inc.
Bernhardt 64N67W 13NWN
NWNE Sec. 13, T4N, R67W, 6th PM
Weld County, Colorado
40.316842°, -104.836827°

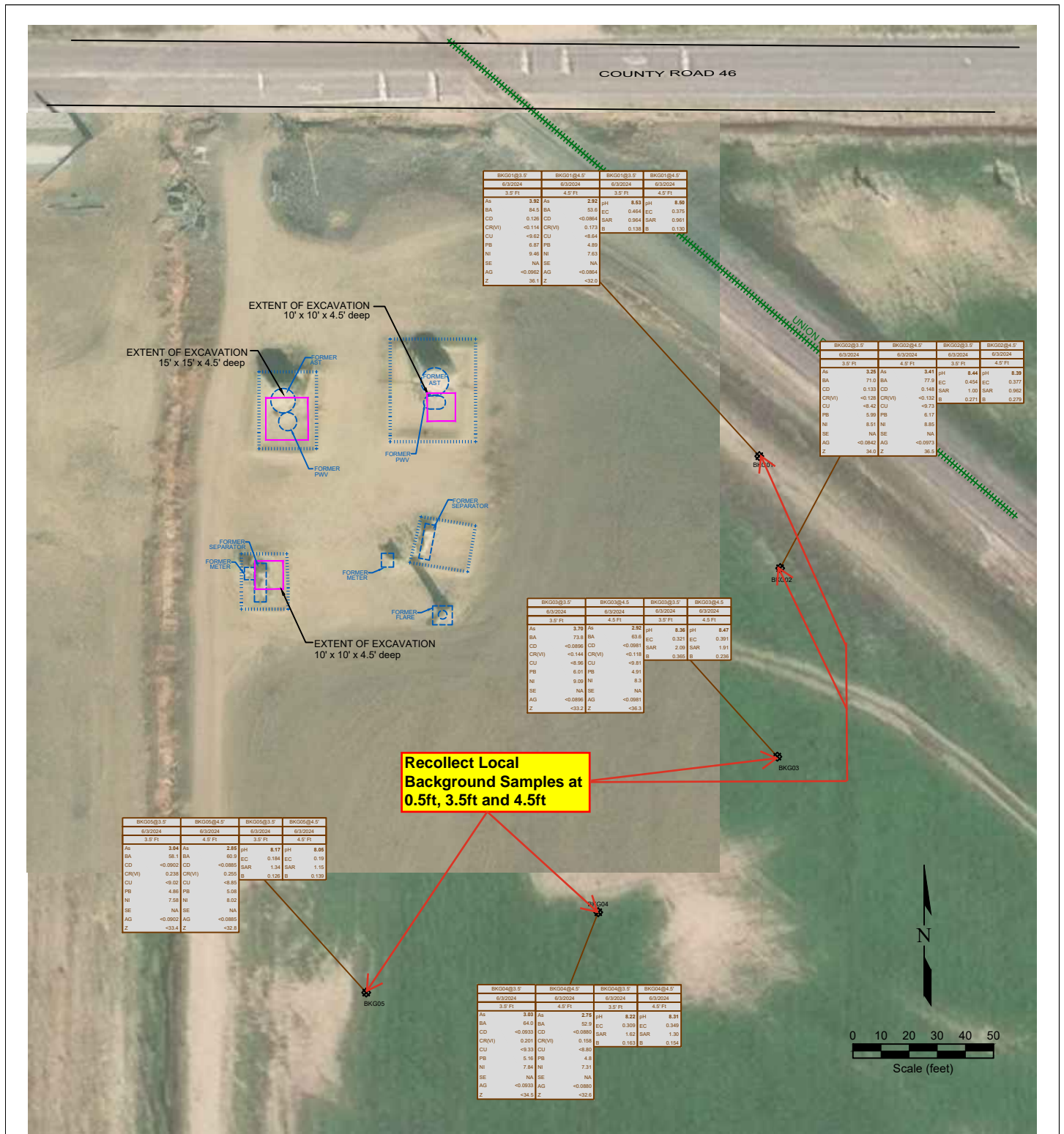
Project No. CO23-131	API #	Facility # 329441	
Date 8/8/24	Remediation # 27437	Filename 23131Q1	

SAMPLE ID	DATE	DEPTH (ft)	SAMPLE ID	DATE	DEPTH (ft)
ACE	<0.000		ACE	<0.000	
Ant	<0.000		Ant	<0.000	
BaA	<0.000		BaA	<0.000	
BaP	<0.000		BaP	<0.000	
BaF	<0.000		BaF	<0.000	
Chr	<0.000		Chr	<0.000	
DBaAnt	<0.000		DBaAnt	<0.000	
FLU	<0.000		FLU	<0.000	
FL	<0.000		FL	<0.000	
1123uPY	<0.000		1123uPY	<0.000	
1MN	<0.000		1MN	<0.000	
2MN	<0.000		2MN	<0.000	

SAMPLE ID	DATE	DEPTH (ft)	SAMPLE ID	DATE	DEPTH (ft)
ACE	<0.000		ACE	<0.000	
Ant	<0.000		Ant	<0.000	
BaA	<0.000		BaA	<0.000	
BaP	<0.000		BaP	<0.000	
BaF	<0.000		BaF	<0.000	
Chr	<0.000		Chr	<0.000	
DBaAnt	<0.000		DBaAnt	<0.000	
FLU	<0.000		FLU	<0.000	
FL	<0.000		FL	<0.000	
1123uPY	<0.000		1123uPY	<0.000	
1MN	<0.000		1MN	<0.000	
2MN	<0.000		2MN	<0.000	

SAMPLE ID	DATE	DEPTH (ft)	SAMPLE ID	DATE	DEPTH (ft)
ACE	<0.000		ACE	<0.000	
Ant	<0.000		Ant	<0.000	
BaA	<0.000		BaA	<0.000	
BaP	<0.000		BaP	<0.000	
BaF	<0.000		BaF	<0.000	
Chr	<0.000		Chr	<0.000	
DBaAnt	<0.000		DBaAnt	<0.000	
FLU	<0.000		FLU	<0.000	
FL	<0.000		FL	<0.000	
1123uPY	<0.000		1123uPY	<0.000	
1MN	<0.000		1MN	<0.000	
2MN	<0.000		2MN	<0.000	

SAMPLE ID	DATE	DEPTH (ft)	SAMPLE ID	DATE	DEPTH (ft)
ACE	<0.000		ACE	<0.000	
Ant	<0.000		Ant	<0.000	
BaA	<0.000		BaA	<0.000	
BaP	<0.000		BaP	<0.000	
BaF	<0.000		BaF	<0.000	
Chr	<0.000		Chr	<0.000	
DBaAnt	<0.000		DBaAnt	<0.000	
FLU	<0.000		FLU	<0.000	
FL	<0.000		FL	<0.000	
1123uPY	<0.000		1123uPY	<0.000	
1MN	<0.000		1MN	<0.000	
2MN	<0.000		2MN	<0.000	



LEGEND

- WELL HEAD LOCATION
- ABOVE GROUND STORAGE TANK
- FORMER FACILITY
- RAIL ROAD TRACKS
- FENCE LINE
- CONTAINMENT BERM
- CONTAINMENT WALL
- EXTENT OF EXCAVATION

BKG01@3.5'	SAMPLE ID	BKG01@4.5'	SAMPLE ID
6/3/2024	DATE SAMPLED	6/3/2024	DATE SAMPLED
3.5 Ft	DEPTH (ft)	4.5 Ft	DEPTH (ft)
As	ARSENIC (mg/kg)	pH	pH (pH units)
BA	BARIUM (mg/kg)	EC	EC (mmhos/cm)
CD	CHROMIUM (mg/kg)	SAR	SAR (unitless)
CR(V)	CHROMIUM (mg/kg)	B	BORON (mg/L)
CU	COPPER (mg/kg)		
PB	LEAD (mg/kg)		
NI	NICKEL (mg/kg)		
SE	SELENIUM (mg/kg)		
AG	SILVER (mg/kg)		
Z	ZINC (mg/kg)		

Figure 3
PROPOSED BACKGROUND RE-SAMPLES

Noble Energy, Inc.
Bernhardt 64N67W 13NWNE
NWNE Sec. 13, T4N, R67W, 6th PM
Weld County, Colorado
40.316842°, -104.836827°

Project No. CO23-131	API #	Facility # 329441
Date 8/8/24	Remediation # 27437	Filename 23131QBKG

