

LEGEND

● WELLHEAD LOCATION
 ✖ SOIL SAMPLE LOCATION

○ ABOVE GROUND
 STORAGE TANK

FORMER
 FACILITY

--- FLOW LINE
 --- CONTAINMENT BERM
 --- FENCE LINE
 --- FORMER DUMP LINE

| 4/7/2023 | DATE SAMPLED | 4/7/2023 | DATE SAMPLED | 4/7/2023 | DATE SAMPLED |
|----------|--------------------------|----------|--------------------------|----------|--------------------------|
| FLU1 (4) | SAMPLE ID and DEPTH (ft) | FLU1 (4) | SAMPLE ID and DEPTH (ft) | FLU1 (4) | SAMPLE ID and DEPTH (ft) |
| ACE | <0.00500 | ACE | <0.00500 | ACE | <0.00500 |
| Ant | <0.00500 | Ant | <0.00500 | Ant | <0.00500 |
| BaA | <0.00500 | BaA | <0.00500 | BaA | <0.00500 |
| BaP | <0.00500 | BaP | <0.00500 | BaP | <0.00500 |
| BbF | <0.00500 | BbF | <0.00500 | BbF | <0.00500 |
| BkF | <0.00500 | BkF | <0.00500 | BkF | <0.00500 |
| Chr | <0.00500 | Chr | <0.00500 | Chr | <0.00500 |
| DBaHant | <0.00500 | DBaHant | <0.00500 | DBaHant | <0.00500 |
| FLU | <0.00500 | FLU | <0.00500 | FLU | <0.00500 |
| 1123cdPY | <0.00500 | 1123cdPY | <0.00500 | 1123cdPY | <0.00500 |
| 1MN | <0.00500 | 1MN | <0.00500 | 1MN | <0.00500 |
| 2MN | <0.00500 | 2MN | <0.00500 | 2MN | <0.00500 |
| PY | <0.00500 | PY | <0.00500 | PY | <0.00500 |

| 4/7/2023 | DATE SAMPLED | 4/7/2023 | DATE SAMPLED | 4/7/2023 | DATE SAMPLED |
|----------|--------------------------|----------|--------------------------|----------|--------------------------|
| FLU1 (4) | SAMPLE ID and DEPTH (ft) | FLU1 (4) | SAMPLE ID and DEPTH (ft) | FLU1 (4) | SAMPLE ID and DEPTH (ft) |
| ACE | <0.00500 | ACE | <0.00500 | ACE | <0.00500 |
| Ant | <0.00500 | Ant | <0.00500 | Ant | <0.00500 |
| BaA | <0.00500 | BaA | <0.00500 | BaA | <0.00500 |
| BaP | <0.00500 | BaP | <0.00500 | BaP | <0.00500 |
| BbF | <0.00500 | BbF | <0.00500 | BbF | <0.00500 |
| BkF | <0.00500 | BkF | <0.00500 | BkF | <0.00500 |
| Chr | <0.00500 | Chr | <0.00500 | Chr | <0.00500 |
| DBaHant | <0.00500 | DBaHant | <0.00500 | DBaHant | <0.00500 |
| FLU | <0.00500 | FLU | <0.00500 | FLU | <0.00500 |
| 1123cdPY | <0.00500 | 1123cdPY | <0.00500 | 1123cdPY | <0.00500 |
| 1MN | <0.00500 | 1MN | <0.00500 | 1MN | <0.00500 |
| 2MN | <0.00500 | 2MN | <0.00500 | 2MN | <0.00500 |
| PY | <0.00500 | PY | <0.00500 | PY | <0.00500 |

| 4/7/2023 | DATE SAMPLED | 4/7/2023 | DATE SAMPLED | 4/7/2023 | DATE SAMPLED |
|----------|--------------------------|----------|--------------------------|----------|--------------------------|
| FLU1 (4) | SAMPLE ID and DEPTH (ft) | FLU1 (4) | SAMPLE ID and DEPTH (ft) | FLU1 (4) | SAMPLE ID and DEPTH (ft) |
| ACE | <0.00500 | ACE | <0.00500 | ACE | <0.00500 |
| Ant | <0.00500 | Ant | <0.00500 | Ant | <0.00500 |
| BaA | <0.00500 | BaA | <0.00500 | BaA | <0.00500 |
| BaP | <0.00500 | BaP | <0.00500 | BaP | <0.00500 |
| BbF | <0.00500 | BbF | <0.00500 | BbF | <0.00500 |
| BkF | <0.00500 | BkF | <0.00500 | BkF | <0.00500 |
| Chr | <0.00500 | Chr | <0.00500 | Chr | <0.00500 |
| DBaHant | <0.00500 | DBaHant | <0.00500 | DBaHant | <0.00500 |
| FLU | <0.00500 | FLU | <0.00500 | FLU | <0.00500 |
| 1123cdPY | <0.00500 | 1123cdPY | <0.00500 | 1123cdPY | <0.00500 |
| 1MN | <0.00500 | 1MN | <0.00500 | 1MN | <0.00500 |
| 2MN | <0.00500 | 2MN | <0.00500 | 2MN | <0.00500 |
| PY | <0.00500 | PY | <0.00500 | PY | <0.00500 |

NOT ANALYZED

Figure 1
 PROPOSED SITE INVESTIGATION PLAN

NOBLE ENERGY INC ~ 31-4-64 SENE Tank Battery
 SENE Sec. 31, T4N, R64W, 6th PM
 Weld County, Colorado
 40.271089°, -104.584589°

Project #
 CO23-135

API #

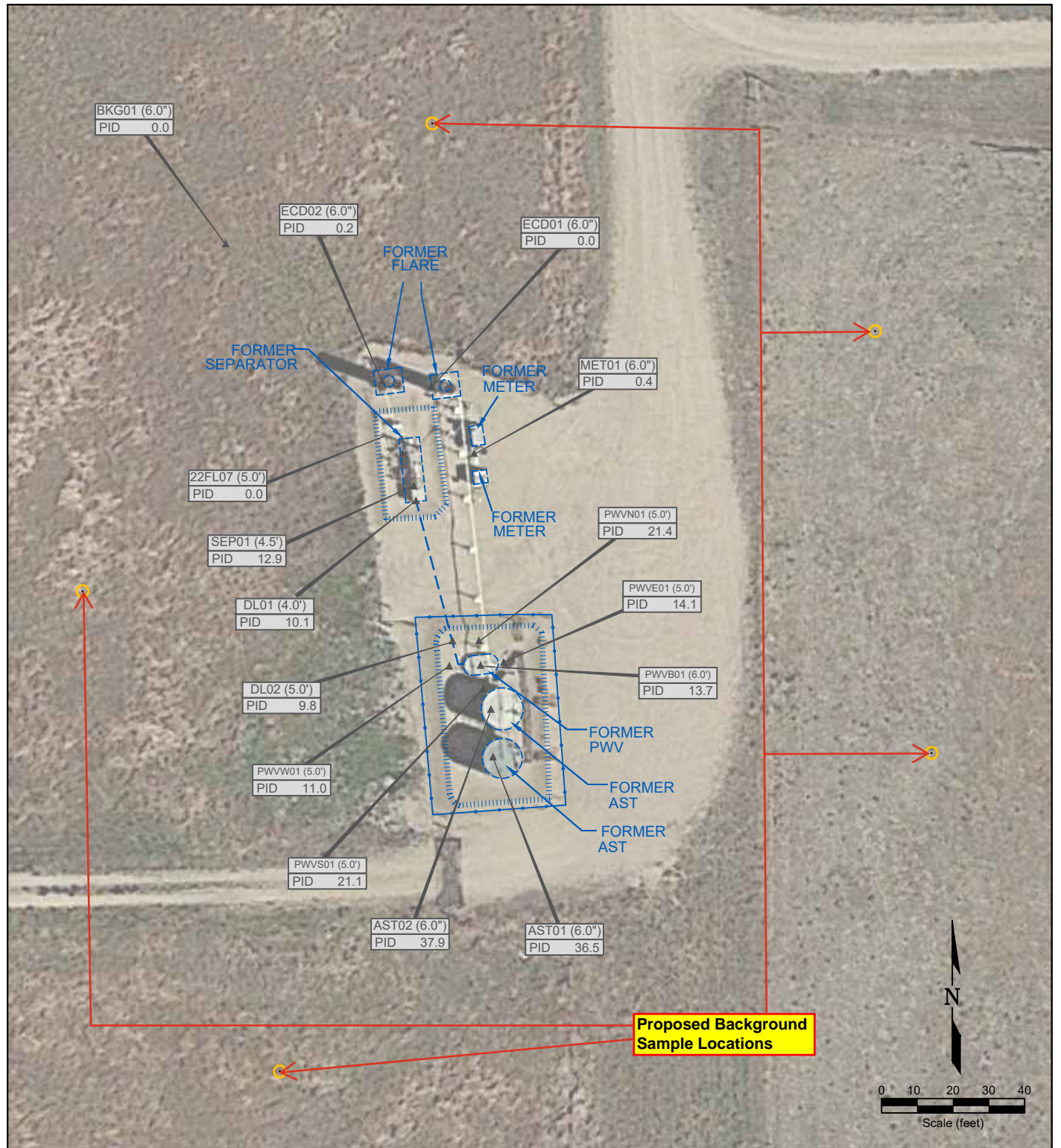
Facility #
 467637

Date
 4/9/25

Remediation #
 26965

Filename
 23135Q





LEGEND

| | | | |
|------------------------|-----------------------------|-----------------|------------------|
| ● WELLHEAD LOCATION | ○ ABOVE GROUND STORAGE TANK | FORMER FACILITY | FLOW LINE |
| ▲ PID READING LOCATION | | | CONTAINMENT BERM |
| | | | FENCE LINE |
| | | | FORMER DUMP LINE |

FL01 PID READING LOCATION IDENTIFICATION
PID 0.1 PHOTO IONIZATION DETECTION (ppm)

Figure 2


PROPOSED BACKGROUND LOCATIONS

NOBLE ENERGY INC ~ 31-4-64 SENE Tank Battery

SENE Sec. 31, T4N, R64W, 6th PM

Weld County, Colorado

40.271089°, -104.584589°

| | | | |
|------------------------------|-------------------------------|-----------------------------|---------------------------------------------------------------------------------------|
| Project # CO23-135 | API # | Facility # 467637 |  |
| Date 4/9/25 | Remediation # 26965 | Filename 23135Q | |