

# Inspection/Audit Photos

Location Name: TEP ROCKY MOUNTAIN LLC Jolley KP 41-28 Pad

Location ID: 423258



Photo # 1783 From entrance to location

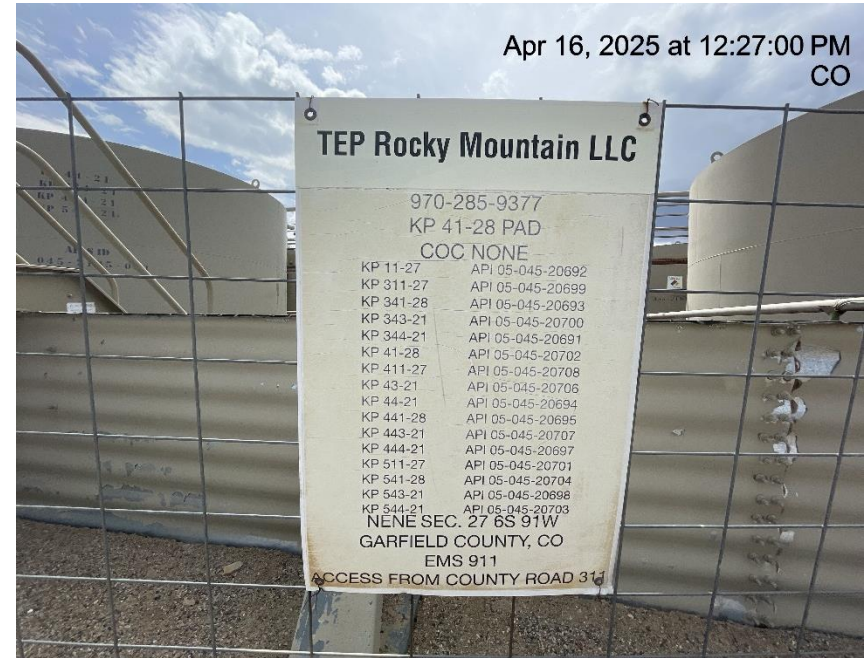


Photo # 1784 Location

## Inspection/Audit Photos

Location Name: TEP ROCKY MOUNTAIN LLC Jolley KP 41-28 Pad

Location ID: 423258



Photo # 1785 Location



Photo # 1786 Location

## Inspection/Audit Photos

Location Name: TEP ROCKY MOUNTAIN LLC Jolley KP 41-28 Pad

Location ID: 423258



Photo # 1787 Location

Photo # 1788 Location

## Inspection/Audit Photos

Location Name: TEP ROCKY MOUNTAIN LLC Jolley KP 41-28 Pad

Location ID: 423258



Photo # 1789 Location



Photo # 1790 Location

## Inspection/Audit Photos

Location Name: TEP ROCKY MOUNTAIN LLC Jolley KP 41-28 Pad

Location ID: 423258



Photo # 1791 Location

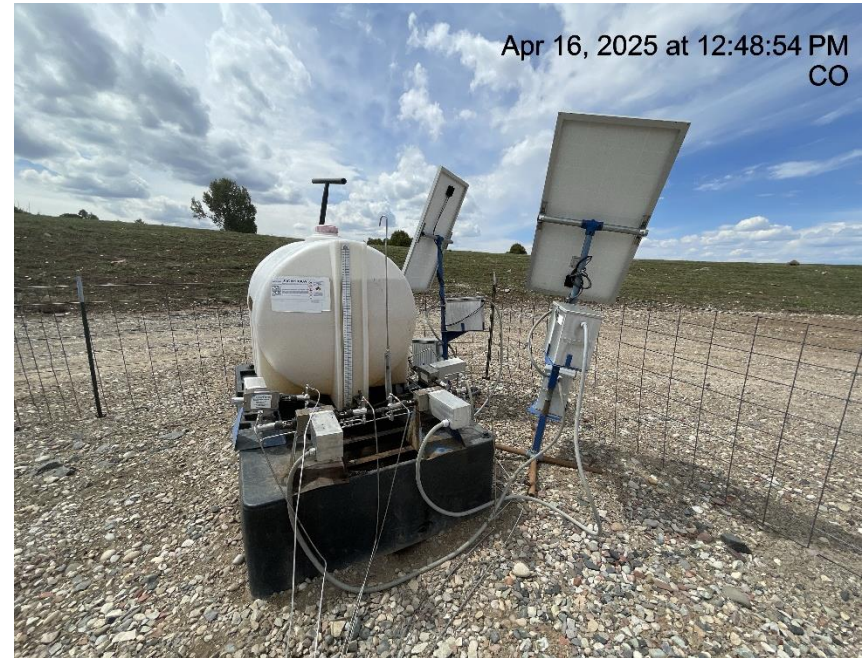


Photo # 1792 Location

## Inspection/Audit Photos

Location Name: TEP ROCKY MOUNTAIN LLC Jolley KP 41-28 Pad

Location ID: 423258

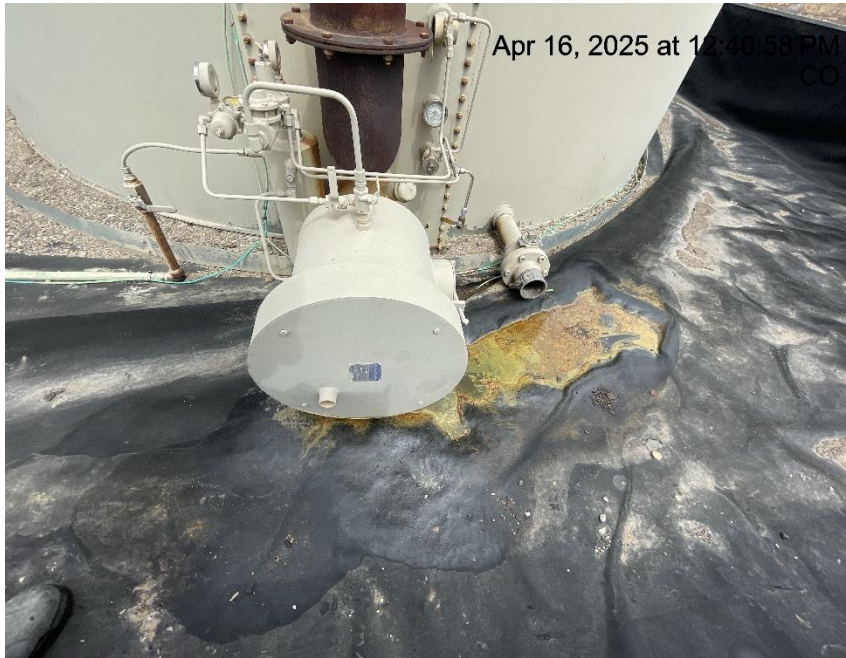


Photo # 1793 E & P waste in secondary containment



Photo # 1794 E & P waste in secondary containment

## Inspection/Audit Photos

Location Name: TEP ROCKY MOUNTAIN LLC Jolley KP 41-28 Pad

Location ID: 423258



Photo # 1795 Open ended load line



Photo # 1796 Open ended load line

## Inspection/Audit Photos

Location Name: TEP ROCKY MOUNTAIN LLC Jolley KP 41-28 Pad

Location ID: 423258



Apr 16, 2025 at 12:37:28 PM  
CO



Apr 16, 2025 at 12:30:44 PM  
CO

Photo # 1797 Open ended load line

Photo # 1798 Open ended load line

## Inspection/Audit Photos

Location Name: TEP ROCKY MOUNTAIN LLC Jolley KP 41-28 Pad

Location ID: 423258



Photo # 1799 Open ended load line



Photo # 1800 Open ended load line

## Inspection/Audit Photos

Location Name: TEP ROCKY MOUNTAIN LLC Jolley KP 41-28 Pad

Location ID: 423258



Photo # 1801 Open ended load line



Photo # 1802 Open ended load line

## Inspection/Audit Photos

Location Name: TEP ROCKY MOUNTAIN LLC Jolley KP 41-28 Pad

Location ID: 423258



**Photo # 1803 Hole in secondary containment liner/liner needs maintenance**



**Photo # 1804 Hole in secondary containment liner/liner needs maintenance**

## Inspection/Audit Photos

Location Name: TEP ROCKY MOUNTAIN LLC Jolley KP 41-28 Pad

Location ID: 423258



**Photo # 1805 Hole in secondary containment liner/liner needs maintenance**



**Photo # 1806 Hole in secondary containment liner/liner needs maintenance**

## Inspection/Audit Photos

Location Name: TEP ROCKY MOUNTAIN LLC Jolley KP 41-28 Pad

Location ID: 423258



**Photo # 1807 PRV vent line on tank heater does not comply with CECMC pressure safety device rules or general safety rules**