

DATE: January 2025  
 DESIGNED BY: J. Whritenour  
 DRAWN BY: L. Reed



**Tasman, Inc.**  
 6855 W. 119th Ave  
 Broomfield, CO 80020

**Noble Energy, Inc. - 100322 - DJ Basin**  
**Jepsen T3N-R65W-S2 L04 Tank Battery**  
 NWSW, Section 2, Township 3 North, Range 65 West  
 Weld County, Colorado

Site Location Map

Figure  
1



DATE: January 24, 2025

DESIGNED BY: J. Whritenour

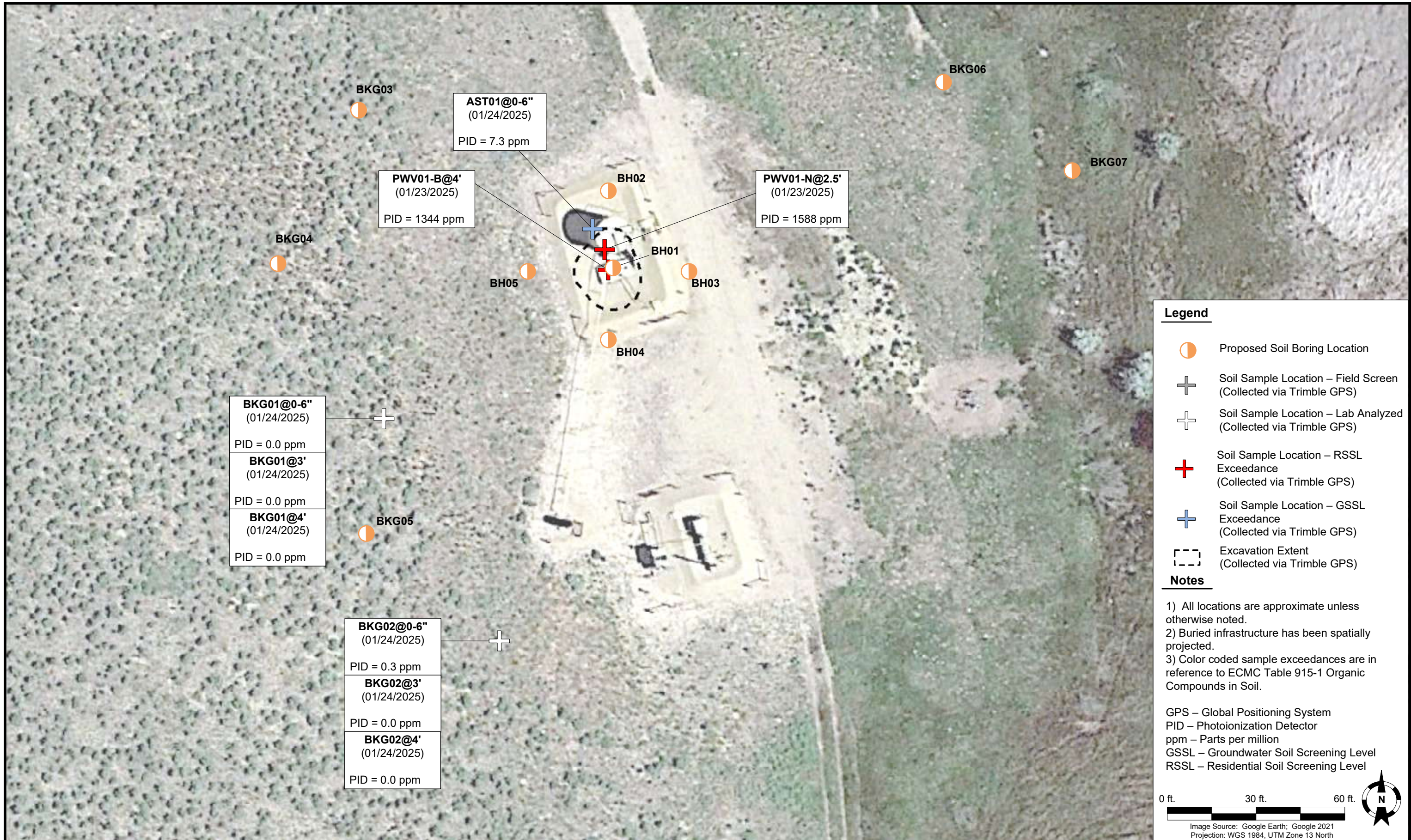
DRAWN BY: J. Clonts








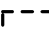
**Noble Energy, Inc. – 100322 – DJ Basin**  
**Jepsen T3N-R65W-S2 L04 Tank Battery**  
 NWSW, Section 2, Township 3 North, Range 65 West  
 Weld County, Colorado

SOIL SAMPLE  
 LOCATION MAP  
 (TANK BATTERY)

FIGURE  
 2



**Legend**

-  Proposed Soil Boring Location
-  Soil Sample Location – Field Screen (Collected via Trimble GPS)
-  Soil Sample Location – Lab Analyzed (Collected via Trimble GPS)
-  Soil Sample Location – RSSL Exceedance (Collected via Trimble GPS)
-  Soil Sample Location – GSSL Exceedance (Collected via Trimble GPS)
-  Excavation Extent (Collected via Trimble GPS)

**Notes**

- 1) All locations are approximate unless otherwise noted.
- 2) Buried infrastructure has been spatially projected.
- 3) Color coded sample exceedances are in reference to ECMC Table 915-1 Organic Compounds in Soil.

GPS – Global Positioning System  
 PID – Photoionization Detector  
 ppm – Parts per million  
 GSSL – Groundwater Soil Screening Level  
 RSSL – Residential Soil Screening Level

0 ft.      30 ft.      60 ft.






Image Source: Google Earth; Google 2021  
 Projection: WGS 1984, UTM Zone 13 North

DATE: April 17, 2025

DESIGNED BY: J. Whritenour

DRAWN BY: B. Wagner



**Noble Energy, Inc. – 100322 – DJ Basin**  
**Jepsen T3N-R65W-S2 L04 Tank Battery**  
 NWSW, Section 2, Township 3 North, Range 65 West  
 Weld County, Colorado

PROPOSED SOIL BORING  
 LOCATION MAP

FIGURE  
 3

**TABLE 1**  
**FIELD DATA SUMMARY TABLE**  
**NOBLE ENERGY, INC - 100322**  
**JEPSEN T3N-R65W-S2 L04 TANK BATTERY, WELD COUNTY, COLORADO**  
**REM # 37609**

Sample ID	Sample Date	Depth (ft. bgs)	GPS Data		PDOP Value	VOC Concentration (ppm)
			Latitude	Longitude		
PWV01-B@4'	1/23/2025	4	40.252781	-104.638432	NC	1,344
PWV01-N@2.5'	1/23/2025	2.5	40.252800	-104.638443	0.9	1,588
PWV01-E@2.5'	1/23/2025	2.5	40.252778	-104.638417	0.9	43.8
PWV01-W@2.5'	1/23/2025	2.5	40.252779	-104.638446	NC	969.4
PWV01-S@2.5'	1/23/2025	2.5	40.252763	-104.638430	1.0	258.0
SEP01-FL@3.5'	1/23/2025	3.5	40.252487	-104.638295	0.8	0.0
SEP01-DL@3.5'	1/23/2025	3.5	40.252523	-104.638289	0.8	0.0
AST01@0-6"	1/24/2025	0-0.5	40.252816	-104.638457	0.8	7.3
FLARE01@0-6"	1/24/2025	0-0.5	40.252548	-104.638501	1.1	0.0
MH01@0-6"	1/24/2025	0-0.5	40.252512	-104.638378	0.9	0.0
BKG01@0-6"	1/24/2025	0-0.5	40.252643	-104.638710	0.9	0.0
BKG01@3'	1/24/2025	3	40.252643	-104.638710	0.9	0.0
BKG01@4'	1/24/2025	4	40.252643	-104.638710	0.9	0.0
BKG02@0-6"	1/24/2025	0-0.5	40.252437	-104.638571	0.8	0.0
BKG02@3'	1/24/2025	3	40.252437	-104.638571	0.8	0.0
BKG02@4'	1/24/2025	4	40.252437	-104.638571	0.8	0.0

**Notes:**

1. Global Positioning System (GPS) data is provided in decimal degrees using North American Datum (NAD) 83 UTM Zone 13 North.

2. Volatile organic compound (VOC) concentrations are measured in the field using a photoionization detector (PID).

PDOP = Position Dilution of Precision

ppm = Parts per million

ft. = Feet

bgs = Below ground surface

NC = Data not collected

TABLE 2  
SUMMARY OF VOLATILE ORGANIC SOIL CHEMISTRY DATA  
NOBLE ENERGY, INC - 100322  
JEPSEN T3N-R65W-S2 L04 TANK BATTERY, WELD COUNTY, COLORADO  
REM # 37609

Sample ID	Sample Date	Depth (ft. bgs)	Benzene (mg/kg)	Toluene (mg/kg)	Ethyl-Benzene (mg/kg)	Xylenes (mg/kg)	1,2,4-Trimethyl-Benzene (mg/kg)	1,3,5-Trimethyl-Benzene (mg/kg)	Naphthalene (mg/kg)	TPH (mg/kg)	TPH GRO (mg/kg)	TPH DRO (mg/kg)	TPH ORO (mg/kg)
ECMC Table 915-1 Limits (Residential SSL)			1.2	490	5.8	58	30	27	2	500	500**		
ECMC Table 915-1 Limits (Protection of Groundwater SSL)			0.0026	0.69	0.78	9.9	0.0081	0.0087	0.0038	500	500**		
PWV01-B@4'	1/23/2025	4	<b>0.43</b>	<0.050	<b>1.3</b>	<b>25</b>	<b>7.1</b>	<b>5.1</b>	<0.038*	<b>500</b>	<b>310</b>	<b>190</b>	<50
PWV01-N@2.5'	1/23/2025	2.5	<b>0.62</b>	0.023	<b>7.1</b>	0.061	<b>41</b>	<b>31</b>	<b>0.27</b>	<b>1,694</b>	<b>1,600</b>	<b>94</b>	<50
SEP01-FL@3.5'	1/23/2025	3.5	<0.0020	<0.0050	<0.0050	<0.010	<0.0050	<0.0050	<0.0038*	<50	<0.50	<50	<50
SEP01-DL@3.5'	1/23/2025	3.5	<0.0020	<0.0050	<0.0050	<0.010	<0.0050	<0.0050	<0.0038*	<50	<0.50	<50	<50
AST01@0-6"	1/24/2025	0-0.5	<0.0020	0.019	0.017	0.15	<b>0.075</b>	<b>0.053</b>	<b>0.010</b>	1.3	1.3	<50	<50

**Notes:**

- Bold** values exceed the ECMC Table 915-1 limit(s).
- Pink & blue highlighted soil analytical values indicate an exceedance of the referenced soil screening level (SSL).
- \* Indicates laboratory minimum detection limit in excess of SSL.
- \*\* Summation of GRO+DRO+ORO must be less than 500 mg/kg.

ECMC = Energy & Carbon Management Commission

(<) = Analytical result is less than the indicated laboratory reporting limit.

TPH-GRO = Total petroleum hydrocarbons - gasoline range organics

TPH-DRO = Total petroleum hydrocarbons - diesel range organics

TPH-ORO = Total petroleum hydrocarbons - oil range organics

mg/kg = Milligrams per kilogram

ft. = Feet

bgs = Below ground surface

TABLE 3  
SUMMARY OF POLYCYCLIC AROMATIC HYDROCARBON SOIL CHEMISTRY DATA  
NOBLE ENERGY, INC -100322  
JEPSEN T3N-R65W-S2 L04 TANK BATTERY, WELD COUNTY, COLORADO  
REM # 37609

Sample ID	Sample Date	Depth (ft. bgs)	Acenaphthene (mg/kg)	Anthracene (mg/kg)	Benzo (a) Anthracene (mg/kg)	Benzo (a) Pyrene (mg/kg)	Benzo (b) Fluoranthene (mg/kg)	Benzo (k) Fluoranthene (mg/kg)	Chrysene (mg/kg)	Dibenzo (a,h) Anthracene (mg/kg)	Fluoranthene (mg/kg)	Fluorene (mg/kg)	Indeno (1,2,3-cd) Pyrene (mg/kg)	Pyrene (mg/kg)	1-Methyl - Naphthalene (mg/kg)	2-Methyl - Naphthalene (mg/kg)
ECMC Table 915-1 Limits (Residential SSL)			360	1,800	1.1	0.11	1.1	11	110	0.11	240	240	1.1	180	18	24
ECMC Table 915-1 Limits (Protection of Groundwater SSL)			0.55	5.8	0.011	0.24	0.3	2.9	9	0.096	8.9	0.54	0.98	1.3	0.006	0.019
PWV01-B@4'	1/23/2025	4	<0.00500	<0.00500	<b>0.0243</b>	<0.00500	<0.00500	<0.00500	0.00684	<0.00500	<0.00500	<0.00500	<0.00500	<0.00500	<b>0.474</b>	<b>0.530</b>
PWV01-N@2.5'	1/23/2025	2.5	<0.00500	<0.00500	0.00966	<0.00500	<0.00500	<0.00500	<0.00500	<0.00500	<0.00500	<0.00500	<0.00500	<0.00500	<b>0.327</b>	<b>0.531</b>
SEP01-FL@3.5'	1/23/2025	3.5	<0.00500	<0.00500	<0.00500	<0.00500	<0.00500	<0.00500	<0.00500	<0.00500	<0.00500	<0.00500	<0.00500	<0.00500	<0.00500	<0.00500
SEP01-DL@3.5'	1/23/2025	3.5	<0.00500	<0.00500	<0.00500	<0.00500	<0.00500	<0.00500	<0.00500	<0.00500	<0.00500	<0.00500	<0.00500	<0.00500	<0.00500	<0.00500
AST01@0-6"	1/24/2025	0-0.5	<0.00500	<0.00500	<0.00500	<0.00500	<0.00500	<0.00500	<0.00500	<0.00500	<0.00500	<0.00500	<0.00500	<0.00500	<0.00500	0.0120

**Notes:**

1. Bold values exceed the ECMC Table 915-1 limit(s).
2. Pink & blue highlighted soil analytical values indicate an exceedance of the referenced soil screening level (SSL).
3. \* Indicates laboratory minimum detection limit in excess of SSL.

ECMC = Colorado Energy & Carbon Management Commission

(<) = Analytical result is less than the indicated laboratory reporting limit.

ft. = Feet

bgs = Below ground surface

mg/kg = Milligrams per kilogram

**TABLE 4**  
**SUMMARY OF SOIL SUITABILITY FOR RECLAMATION**  
**NOBLE ENERGY, INC - 100322**  
**JEPSEN T3N-R65W-S2 L04 TANK BATTERY, WELD COUNTY, COLORADO**  
**REM # 37609**

Sample ID	Sample Date	Depth (ft. bgs)	pH (Standard Units)	EC (mmhos/cm)	SAR (Standard Units)	Boron (mg/L)
ECMC Table 915-1 Soil Suitability Limits			6 - 8.3	<4	<6	2
PWV01-B@4'	1/23/2025	4	7.54	0.590	0.646	<2.00
PWV01-N@2.5'	1/23/2025	2.5	7.37	0.436	0.404	<2.00
SEP01-FL@3.5'	1/23/2025	3.5	<b>8.59</b>	0.177	0.0260	<2.00
SEP01-DL@3.5'	1/23/2025	3.5	<b>8.62</b>	0.129	0.0678	<2.00
AST01@0-6"	1/24/2025	0-0.5	7.59	0.456	0.0929	<2.00
BKG01@0-6"	1/24/2025	0-0.5	7.15	0.0578	0.0282	<2.00
BKG01@3'	1/24/2025	3	5.65	0.105	0.0472	<2.00
BKG01@4'	1/24/2025	4	7.49	0.0143	0.0231	<2.00
BKG02@0-6"	1/24/2025	0-0.5	6.08	0.166	0.0414	<2.00
BKG02@3'	1/24/2025	3	7.18	0.0103	0.0316	<2.00
BKG02@4'	1/24/2025	4	7.72	0.0182	0.0370	<2.00
Maximum Background Concentration			7.49	-	-	-

1. **Bold** faced values exceed the ECMC Table 915-1 limit(s), but are within background concentrations.
2. **Bold** faced values exceed the ECMC Table 915-1 limit(s) and native background concentrations.
3. Brown highlighted soil analytical values indicate a regulatory exceedance.

ECMC = Colorado Energy & Carbon Management Commission

EC = Electrical conductivity

SAR = Sodium adsorption ratio

mmhos/cm = millimhos per centimeter

mg/L = milligram per liter

(<) = Analytical result is less than the indicated laboratory reporting limit.

ft. = Feet

bgs = Below ground surface

TABLE 5  
SUMMARY OF METALS IN SOIL CHEMISTRY DATA  
NOBLE ENERGY, INC - 100322  
JEPSEN T3N-R65W-S2 L04 TANK BATTERY, WELD COUNTY, COLORADO  
REM # 37609

Sample ID	Sample Date	Depth (ft. bgs)	Arsenic (mg/kg)	Barium (mg/kg)	Cadmium (mg/kg)	Chromium (VI) <sup>(4)</sup> (mg/kg)	Copper (mg/kg)	Lead (mg/kg)	Nickel (mg/kg)	Selenium (mg/kg)	Silver (mg/kg)	Zinc (mg/kg)
ECMC Table 915-1 Limits (Residential SSL)			0.68	15,000	71	0.3	3,100	400	1,500	390	390	23,000
ECMC Table 915-1 Limits (Protection of Groundwater SSL)			0.29	82	0.38	0.00067	46	14	26	0.26	0.8	370
PWV01-B@4'	1/23/2025	4	<b>1.34</b>	39.6	<0.200	<0.30	3.59	4.80	2.93	<0.260	<0.0200	14.6
PWV01-N@2.5'	1/23/2025	2.5	<b>1.18</b>	53.2	<0.200	<0.30	4.49	5.38	2.88	<0.260	0.0354	15.8
SEP01-FL@3.5'	1/23/2025	3.5	<b>1.23</b>	34.6	<0.200	<0.30	2.78	3.64	2.57	<0.260	<0.0200	9.95
SEP01-DL@3.5'	1/23/2025	3.5	<b>1.01</b>	31.9	<0.200	<0.30	2.32	3.04	2.30	<0.260	<0.0200	8.53
AST01@0-6"	1/24/2025	0-0.5	<b>1.12</b>	38.7	<0.200	<0.30	3.31	4.06	2.52	<0.260	<0.0200	11.9
BKG01@0-6"	01/24/2025	0-0.5	0.884	21.7	<0.200	<0.30	1.90	5.46	1.57	<0.260	<0.0200	9.03
BKG01@3'	01/24/2025	3	0.795	29.9	<0.200	<0.30	1.63	2.40	1.76	<0.260	<0.0200	7.30
BKG01@4'	01/24/2025	4	0.849	32.3	<0.200	<0.30	1.66	2.50	1.88	<0.260	<0.0200	7.73
BKG02@0-6"	01/24/2025	0-0.5	0.920	22.5	<0.200	<0.30	2.05	4.82	1.82	<0.260	<0.0200	9.55
BKG02@3'	01/24/2025	3	1.01	40.8	<0.200	<0.30	2.08	2.95	2.28	<0.260	0.0215	9.36
BKG02@4'	01/24/2025	4	0.820	33.7	<0.200	<0.30	1.74	2.54	1.94	<0.260	<0.0200	7.81
Maximum Background Concentration X 1.25			1.26	-	-	-	-	-	-	-	-	-

Notes:

- 1. Bold** faced values exceed the ECMC Table 915-1 limit(s), but are within 1.25x background concentrations.
- 2. Bold** faced values exceed the ECMC Table 915-1 limit(s) and native background concentrations.
- Red & blue highlighted soil analytical values indicate an exceedance of the referenced soil screening level (SSL).
- Compound falls within ECMC Table 915-1 Footnote 9.
- Non-detect background results accounted for in the highest background concentration by using the reporting limit.

ECMC = Energy & Carbon Management Commission

(<) = Analytical result is less than the indicated laboratory reporting limit.

mg/kg = Milligrams per kilogram

ft. = Feet



## TANK BATTERY DECOMMISSIONING FORM

<b>CLIENT:</b> Noble		<b>SITE NAME:</b> Jepsen T3N-R65W-S2 L04 TANK					<b>DATE:</b> 1/23/2025	<b>REM. PROJECT #:</b>	<b>WEATHER:</b> 28, Sunny	
<b>SITE DIRECTIONS:</b> From CR49, W 1mi n 35.5, Then N 1.0mi on cr47.5, then W0.7, continue to site							<b>JOB#:</b>			
<b>LEGALS AND LAT/LONG:</b> 40.25259, 104.638357							<b>TASMAN PERSONNEL:</b> D.Bell,			
<b>SOIL TYPES:</b> Poorly Graded Sand - SP							<b>SURFACE GRADIENT:</b> East			
SOIL SAMPLING							FACILITY INFRASTRUCTURE			
Date/Time	Soil Sample ID	PID (ppm)	Visual	Olfactory	Photo?	Grab or Lab Sample?	EQUIPMENT		Quantity	
							Above Ground Storage Tank (AST)		1 <input checked="" type="checkbox"/>	
01-24-2025 10:51	AST01@0-6"	7.3	No Staining	Slight HC Odor	Yes	Lab	Buried or Partially Buried Vessel		1 <input checked="" type="checkbox"/>	
01-23-2025 12:50	PWV01-B@4'	1344	HC Staining	Strong HC Odor	Yes	Lab	Separator		1 <input checked="" type="checkbox"/>	
01-23-2025 12:58	PWV01-N@2.5'	1588	HC Staining	Strong HC Odor	Yes	Lab	Emission Control Device (ECD)		1 <input checked="" type="checkbox"/>	
01-23-2025 12:55	PWV01-E@2.5'	43.8	No Staining	No Odor	Yes	On-hold	Dump Line		1 <input checked="" type="checkbox"/>	
01-23-2025 12:53	PWV01-W@2.5'	969.4	HC Staining	HC Odor	Yes	On-hold	Wellhead			
01-23-2025 12:57	PWV01-S@2.5'	258	No Staining	No Odor	Yes	On-hold	Flowline		1 <input checked="" type="checkbox"/>	
01-24-2025 10:33	FLARE01@0-6"	0.0	No Staining	No Odor	Yes	Grab	Other: MeterHouse		1 <input checked="" type="checkbox"/>	
01-24-2025 10:38	MH01@0-6"	0.0	No Staining	No Odor	Yes	Grab	Soil Loads Removed			
01-23-2025 13:33	SEP01-FL@3.5'	0.0	No Staining	No Odor	Yes	Lab	<b>IMPACTED SOIL IDENTIFIED?</b>			
01-23-2025 13:37	SEP01-DL@3.5'	0.0	No Staining	No Odor	Yes	Lab	<b>ESTIMATED VOLUME OF IMPACTS:</b>			
01-24-2025 11:40	BKG01@0-6"	0.0	No Staining	No Odor	Yes	Lab	Date	Number	CY	
01-24-2025 11:42	BKG01@3'	0.0	No Staining	No Odor	Yes	Lab				
01-24-2025 11:46	BKG01@4'	0.0	No Staining	No Odor	Yes	Lab				
01-24-2025 12:05	BKG02@0-6"	0.3	No Staining	No Odor	Yes	Lab				
01-24-2025 12:08	BKG02@3'	0.0	No Staining	No Odor	Yes	Lab				
01-24-2025 12:15	BKG02@4'	0.0	No Staining	No Odor	Yes	Lab	<b>Total Removed</b>		0      0	
							<b>Disposal Facility:</b>			
							Groundwater Recovery			
							<b>DATE GW ENCOUNTERED:</b>		<b>DEPTH:</b>	
							<b>GROUNDWATER IN CONTACT WITH IMPACTED SOIL?</b>			
							<b>LNAPL OR SHEEN OBSERVED ON GW?</b>			
GROUNDWATER SAMPLING							Date	BBLs		
Date/Time	Groundwater Sample ID	Depth Collected	Turbid?	Sheen?	Odor?	Photo?				
							<b>Total Removed</b>		0	
							<b>Disposal Facility:</b>			

# Chevron Rockies Business Unit

## Field Qualitative Criteria for ECMC Reporting Associated with the Discovery of Potentially Impacted Material

If answered **Yes** to any of the questions listed below, this may suggest the presence of potentially impacted materials as outlined in ECMC Rule 912. Out of an abundance of caution, a “Yes” response will be reported to the ECMC within 24 hours after discovery, regardless of laboratory results. **Immediately notify the RBU Remediation Team.** Include a copy of this Field Qualitative Spill Criteria Checklist in the field Report.

Please answer the following questions when on-site:

1. Is there visible petroleum hydrocarbon staining in the soil? Yes\_\_\_\_\_
2. Does the soil sample from the stained area have a petroleum odor? Yes\_\_\_\_\_
3. Is there a petroleum hydrocarbon sheen on the nearby surface water? No\_\_\_\_\_
4. Does there appear to be a sheen of the surface of accumulated groundwater or seeps within the excavation indicative of petroleum? No\_\_\_\_\_
5. Is stained soil in contact with groundwater? No\_\_\_\_\_

Please Include relevant photos of the site conditions for items 1-5.

Location name: Jepsen T3N-R65W-S2 L04 TANK

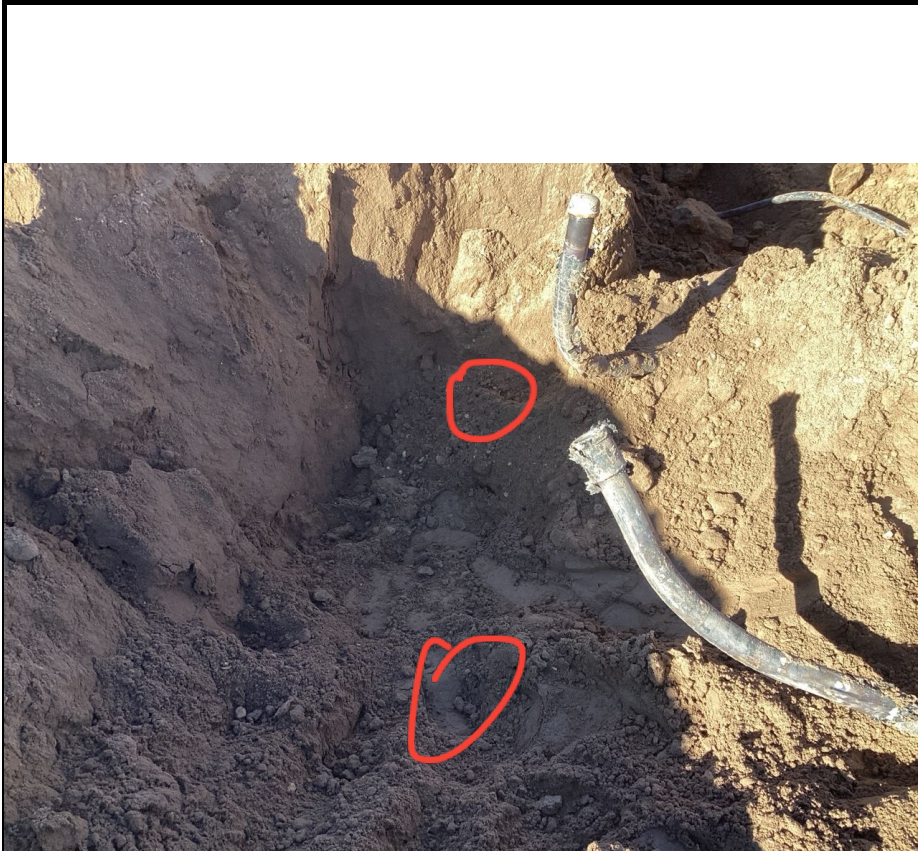
Please Circle Facility Type: Production Facility





<b>Equipment ID:</b> Pww01-b,pww01-s,pww01-e		<b>Equipment Type:</b>	
<b>Material:</b>	<b>Volume:</b>	<b>Contents:</b>	
<b>Notes/Conditions:</b> samples, Pww01-B (bottom), Pww01-S (right), and Pww01-E(Left)			

<b>Equipment ID:</b> Pww01-n, Pww01-w		<b>Equipment Type:</b>	
<b>Material:</b>	<b>Volume:</b>	<b>Contents:</b>	
<b>Notes/Conditions:</b> samples, Pww01-W (left), Pww01-N (right)			

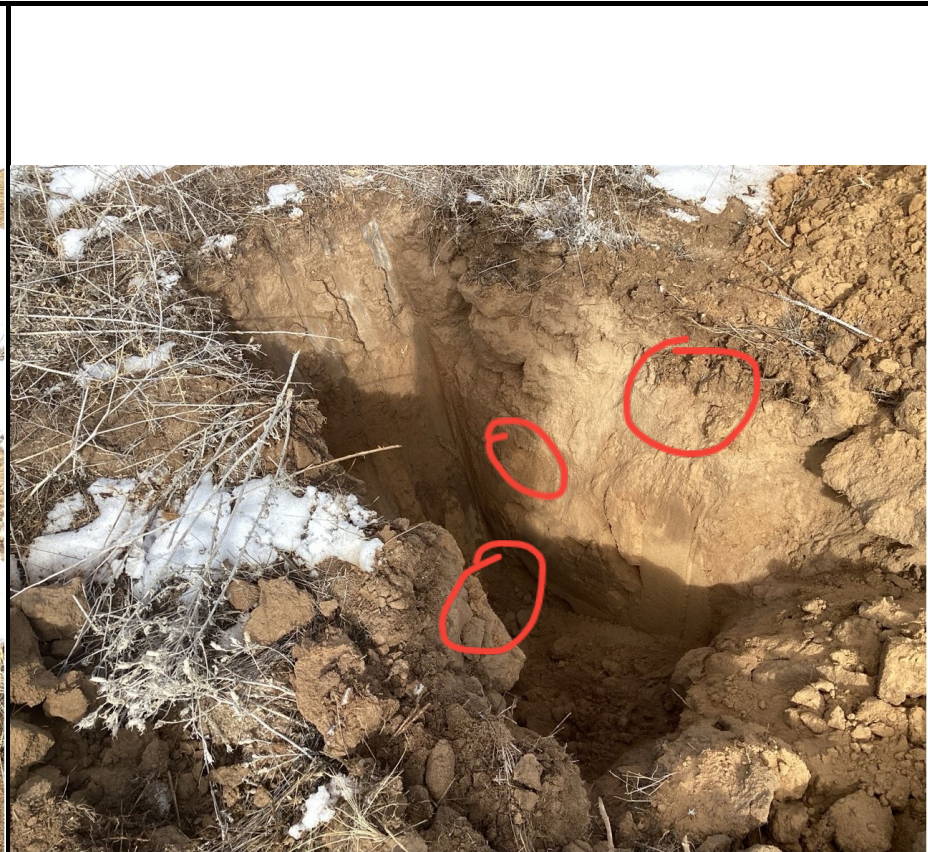


<b>Equipment ID:</b>		<b>Equipment Type:</b>	
<b>Material:</b>	<b>Volume:</b>	<b>Contents:</b>	
<b>Notes/Conditions:</b> SEP01-DL(bottom), SEP01-FL(Top)			

<b>Equipment ID:</b> FLARE01@0-6"		<b>Equipment Type:</b>	
<b>Material:</b>	<b>Volume:</b>	<b>Contents:</b>	
<b>Notes/Conditions:</b>			



<b>Equipment ID:</b> MH01@0-6"		<b>Equipment Type:</b>		<b>Equipment ID:</b> AST01@0-6"		<b>Equipment Type:</b>	
<b>Material:</b>	<b>Volume:</b>	<b>Contents:</b>		<b>Material:</b>	<b>Volume:</b>	<b>Contents:</b>	
<b>Notes/Conditions:</b>				<b>Notes/Conditions:</b>			



<b>Equipment ID:</b> BKG01@0-6", 3' and 4'		<b>Equipment Type:</b>	
<b>Material:</b>	<b>Volume:</b>	<b>Contents:</b>	
<b>Notes/Conditions:</b>			

<b>Equipment ID:</b> BKG02@06", 3' and 4'		<b>Equipment Type:</b>	
<b>Material:</b>	<b>Volume:</b>	<b>Contents:</b>	
<b>Notes/Conditions:</b>			