

TABLE 1
SUMMARY OF GROUNDWATER ELEVATION DATA AND ORGANIC CHEMISTRY DATA
PDC 69175
PHELPS 11-32 CHZ, WELD COUNTY, COLORADO
REM # 33237

Sample ID	Sample Date	Benzene (µg/L)	Toluene (µg/L)	Ethyl-Benzene (µg/L)	Xylenes (µg/L)	Naphthalene (µg/L)	1,2,4-Trimethyl-Benzene (µg/L)	1,3,5-Trimethyl-Benzene (µg/L)	TOC Elevation (ft)	Depth to Groundwater Below TOC (ft)	Groundwater Elevation (ft)	LNAPL Thickness (ft)
ECMC Table 915-1 Limits		5.0	560	700	1400	140	67	67				
SEP GW	08/23/23	14	<1.0	<1.0	22	<1.0	4.7	<1.0	NM	NM	NM	NP
MW-1	01/12/24	<1.0	<1.0	<1.0	<2.0	<1.0	<1.0	<1.0	96.03	6.70	89.33	NP
	04/11/24	<1.0	<1.0	<1.0	<2.0	<1.0	<1.0	<1.0		3.98	92.05	NP
	07/03/24	<1.00	<1.00	<1.00	<1.00	<2.00	<2.00	<2.00		2.48	93.55	NP
	10/02/24	<1.0	<1.0	<1.0	<2.0	<1.0	<1.0	<1.0		3.33	92.70	NP
	01/13/25	<1.0	<1.0	<1.0	<2.0	<1.0	<1.0	<1.0		6.15	89.88	NP
MW-2	01/12/24	<1.0	<1.0	<1.0	<2.0	<1.0	<1.0	<1.0	99.03	10.50	88.53	NP
	04/11/24	<1.0	<1.0	<1.0	<2.0	<1.0	<1.0	<1.0		8.24	90.79	NP
	07/03/24	<1.00	<1.00	<1.00	<1.00	<2.00	<2.00	<2.00		6.08	92.95	NP
	10/02/24	<1.0	<1.0	<1.0	<2.0	<1.0	<1.0	<1.0		7.18	91.85	NP
	01/13/25	<1.0	<1.0	<1.0	<2.0	<1.0	<1.0	<1.0		9.91	89.12	NP
MW-3	01/12/24	<1.0	<1.0	<1.0	<2.0	<1.0	<1.0	<1.0	100.00	11.46	88.54	NP
	04/11/24	<1.0	<1.0	<1.0	<2.0	<1.0	<1.0	<1.0		8.45	91.55	NP
	07/03/24	<1.00	<1.00	<1.00	<1.00	<2.00	<2.00	<2.00		7.41	92.59	NP
	10/02/24	<1.0	<1.0	<1.0	<2.0	<1.0	<1.0	<1.0		8.30	91.70	NP
	01/13/25	<1.0	<1.0	<1.0	<2.0	<1.0	<1.0	<1.0		10.95	89.05	NP
MW-4	01/12/24	8.5	25	2.5	13	<1.0	<1.0	1.5	99.47	10.66	88.81	NP
	04/11/24	<1.0	<1.0	<1.0	<2.0	<1.0	<1.0	<1.0		8.23	91.24	NP
	07/03/24	<1.00	<1.00	<1.00	<1.00	<2.00	<2.00	<2.00		6.30	93.17	NP
	10/02/24	<1.0	<1.0	<1.0	<2.0	<1.0	<1.0	<1.0		7.36	92.11	NP
	01/13/25	<1.0	<1.0	<1.0	<2.0	<1.0	<1.0	<1.0		10.10	89.37	NP

TABLE 1
SUMMARY OF GROUNDWATER ELEVATION DATA AND ORGANIC CHEMISTRY DATA
PDC 69175
PHELPS 11-32 CHZ, WELD COUNTY, COLORADO
REM # 33237

Sample ID	Sample Date	Benzene (µg/L)	Toluene (µg/L)	Ethyl-Benzene (µg/L)	Xylenes (µg/L)	Naphthalene (µg/L)	1,2,4-Trimethyl-Benzene (µg/L)	1,3,5-Trimethyl-Benzene (µg/L)	TOC Elevation (ft)	Depth to Groundwater Below TOC (ft)	Groundwater Elevation (ft)	LNAPL Thickness (ft)
ECMC Table 915-1 Limits		5.0	560	700	1400	140	67	67				
MW-5	01/12/24	<1.0	<1.0	<1.0	<2.0	<1.0	<1.0	<1.0	99.61	10.58	89.03	NP
	04/11/24	<1.0	<1.0	<1.0	<2.0	<1.0	<1.0	<1.0		7.81	91.80	NP
	07/03/24	<1.00	<1.00	<1.00	<1.00	<2.00	<2.00	<2.00		6.07	93.54	NP
	10/02/24	<1.0	<1.0	<1.0	<2.0	<1.0	<1.0	<1.0		7.20	92.41	NP
	01/13/25	<1.0	<1.0	<1.0	<2.0	<1.0	<1.0	<1.0		10.01	89.60	NP

1. Bold values exceed the ECMC limit(s)

2. Red highlighted groundwater analytical values indicate a regulatory exceedance

NP - No measurable LNAPL, NA - Not Analyzed, NL - No Limit, INA - Inaccessible, IW - Insufficient Water, DES - Destroyed

TABLE 2
SUMMARY OF INORGANIC GROUNDWATER CHEMISTRY DATA
PDC 69175
PHELPS 11-32 CHZ, WELD COUNTY, COLORADO
REM # 33237

Sample ID	Sample Date	Total Dissolved Solids (mg/L)	Chloride Ion (mg/L)	Sulfate Ion (mg/L)	Selenium (mg/L)
ECMC Table 915-1 Limits*		<1.25 x local background	250 or <1.25 x local background	250 or <1.25 x local background	0.05*
MW-1	1/12/24	924	208	172	NA
	4/11/24	1350	244	232	NA
	7/3/24	1190	246	265	NA
	10/2/24	812	191	180	NA
	1/13/25	967	OOH	OOH	NA
MW-2	1/12/24	902	178	189	NA
	4/11/24	1110	215	210	NA
	7/3/24	1150	111	243	NA
	10/2/24	1090	200	262	NA
	1/13/25	1090	OOH	OOH	NA
MW-3	1/12/24	1020	202	243	NA
	4/11/24	1260	226	248	NA
	7/3/24	1200	235	282	NA
	10/2/24	1180	195	288	NA
	1/13/25	1180	OOH	OOH	0.00186
MW-4	1/12/24	870	191	182	NA
	4/11/24	1160	227	217	NA
	7/3/24	1400	305	280	NA
	10/2/24	948	168	219	NA
	1/13/25	2880	OOH	OOH	NA
MW-5	1/12/24	822	206	165	NA
	4/11/24	1350	261	232	NA
	7/3/24	1110	233	209	NA
	10/2/24	841	177	166	NA
	1/13/25	1060	OOH	OOH	NA
Background Concentration (Current)		1209	OOH	OOH	-

1. Bold values exceed the ECMC limit(s)

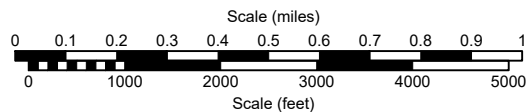
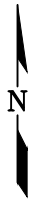
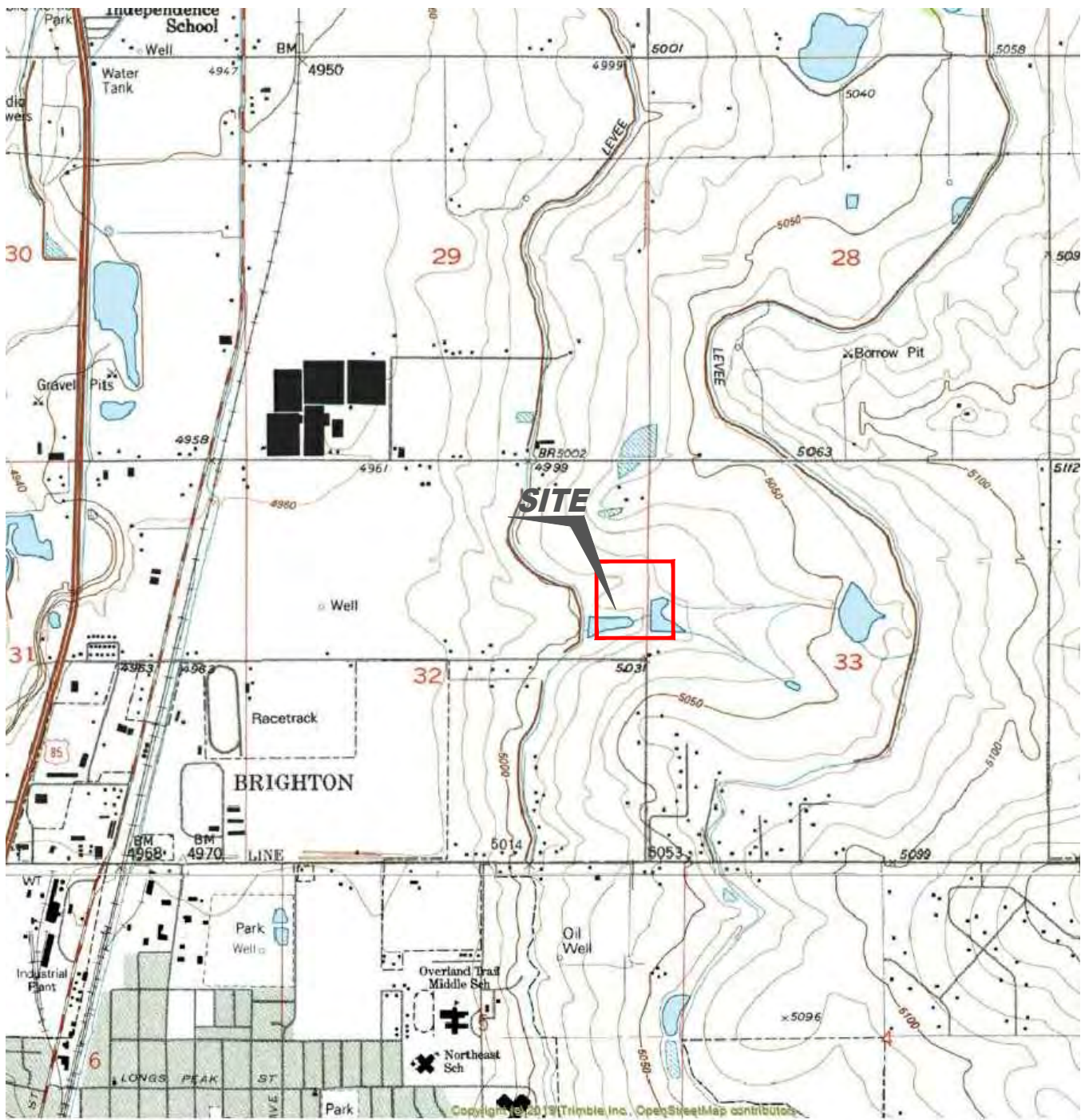
2. Blue highlighted groundwater analytical values indicate a regulatory exceedance

NP - No measurable LNAPL, NA - Not Analyzed, INA - Inaccessible, IW - Insufficient Water, DES - Destroyed

OOH - Out of Hold, therefore, data is invalid

MW-1 used as upgradient monitoring well

*Dissolved selenium standard refers to Colorado Regulation 41 Standards



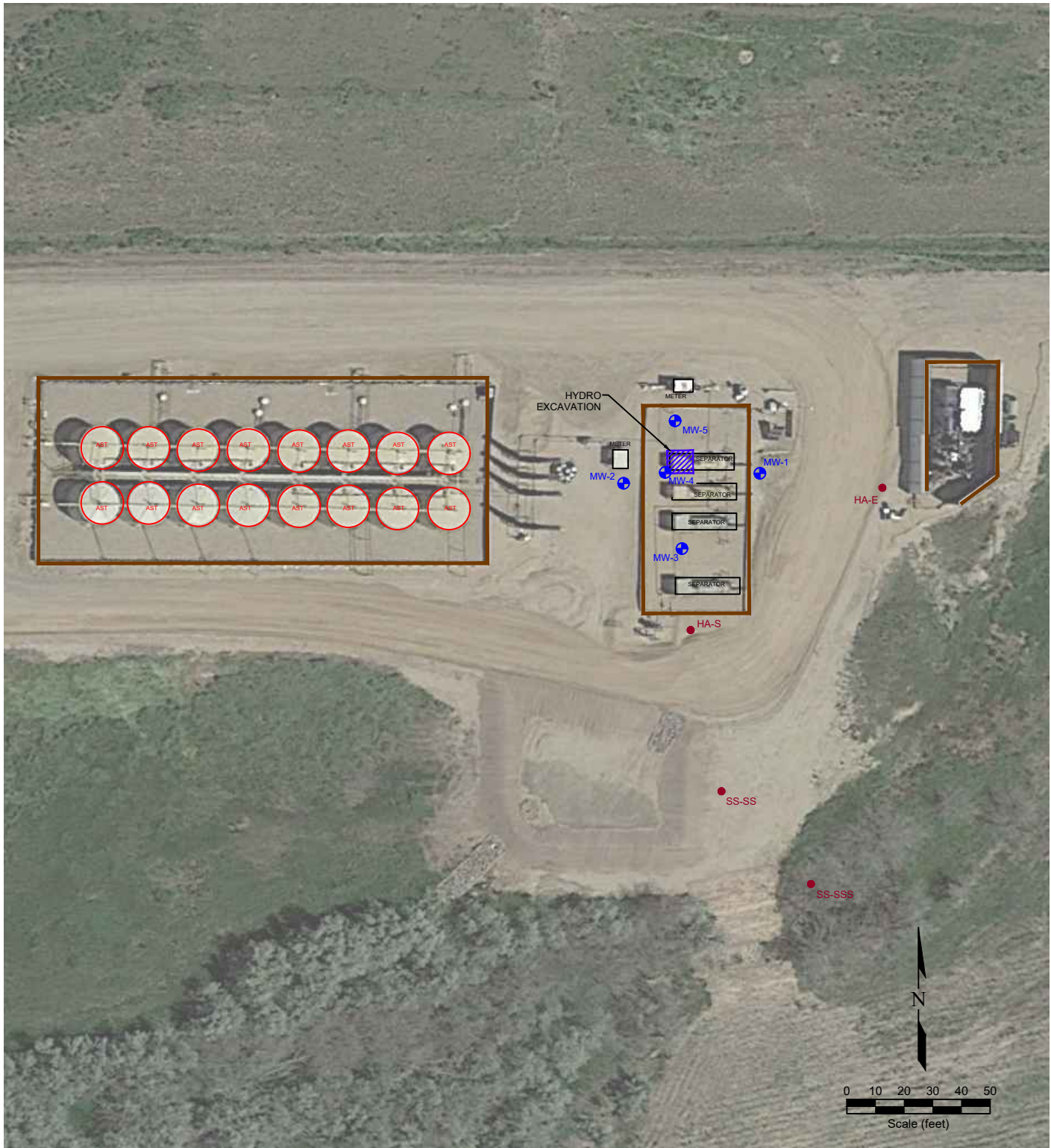
USGS 7.5 MINUTE SERIES (TOPOGRAPHIC)

Figure 1
SITE LOCATION MAP

PDC ENERGY, INC. ~ PHELPS 11-32CHZ
 SENE Section 32, T1N, R66W, 6th PM
 Weld County, Colorado
 40.01110°, -104.79257°

Project No. C023-233	API #	Facility # 433548
Date 4/14/25	Remediation #	Filename 23233T





LEGEND

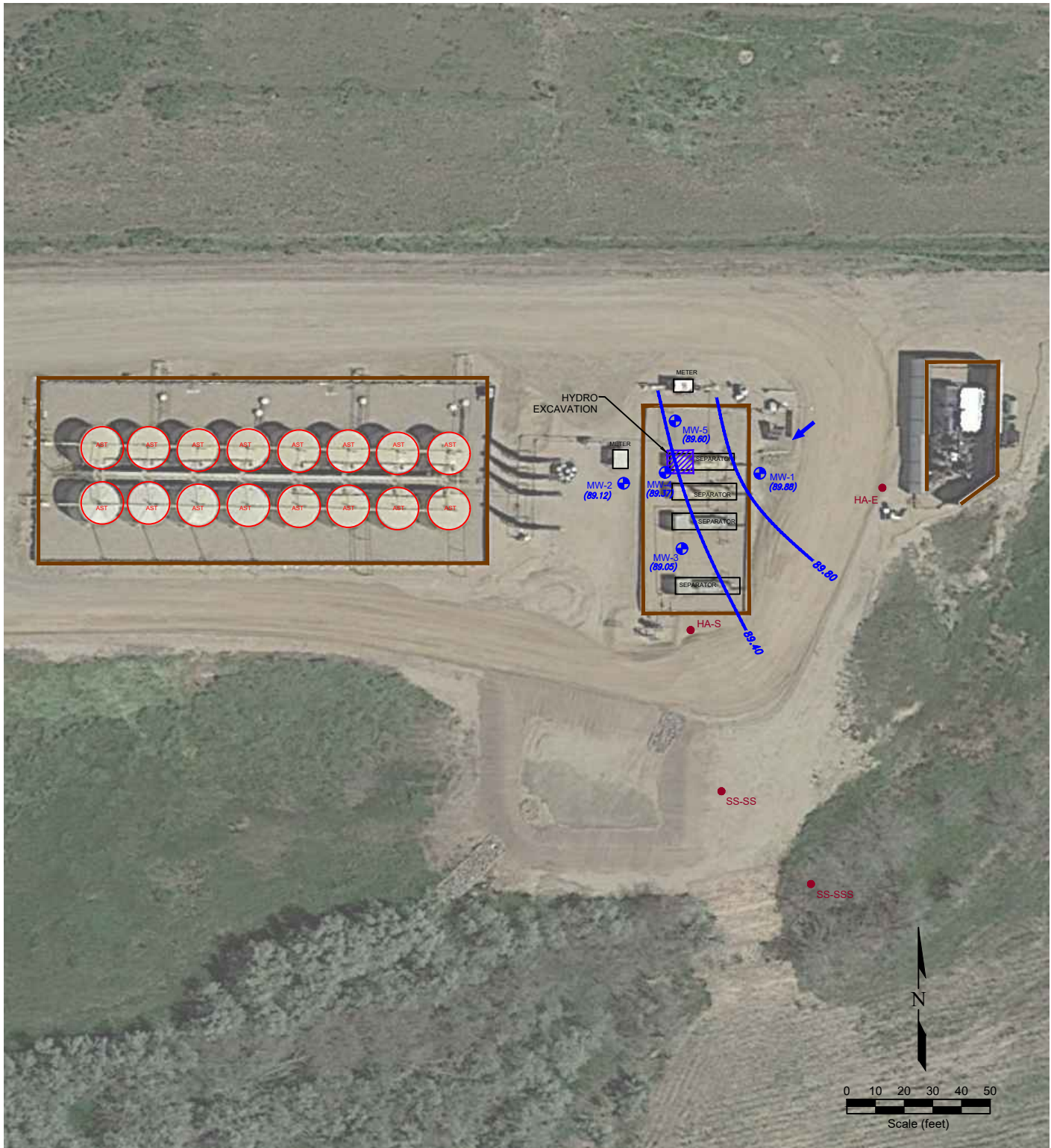
- HAND AUGURED SOIL BORING
- HYDROEXCAVATION
- ◻ FORMER FACILITY
- ▨ CONTAINMENT BERM
- MONITORING WELL LOCATION
- ABOVE GROUND STORAGE TANK
- ▭ BUILDING
- ▬ CONTAINMENT WALL
- ▬ EXTENT OF EXCAVATION
- ▬ FENCE LINE

**Figure 2
SITE MAP**

PDC ENERGY, INC. ~ PHELPS 11-32CHZ
 SENE Section 32, T1N, R66W, 6th PM
 Weld County, Colorado
 40.01110°, -104.79257°

Project No. C023-233	API #	Facility # 433548
Date 4/1/25	Remediation #	Filename 23233Q





LEGEND

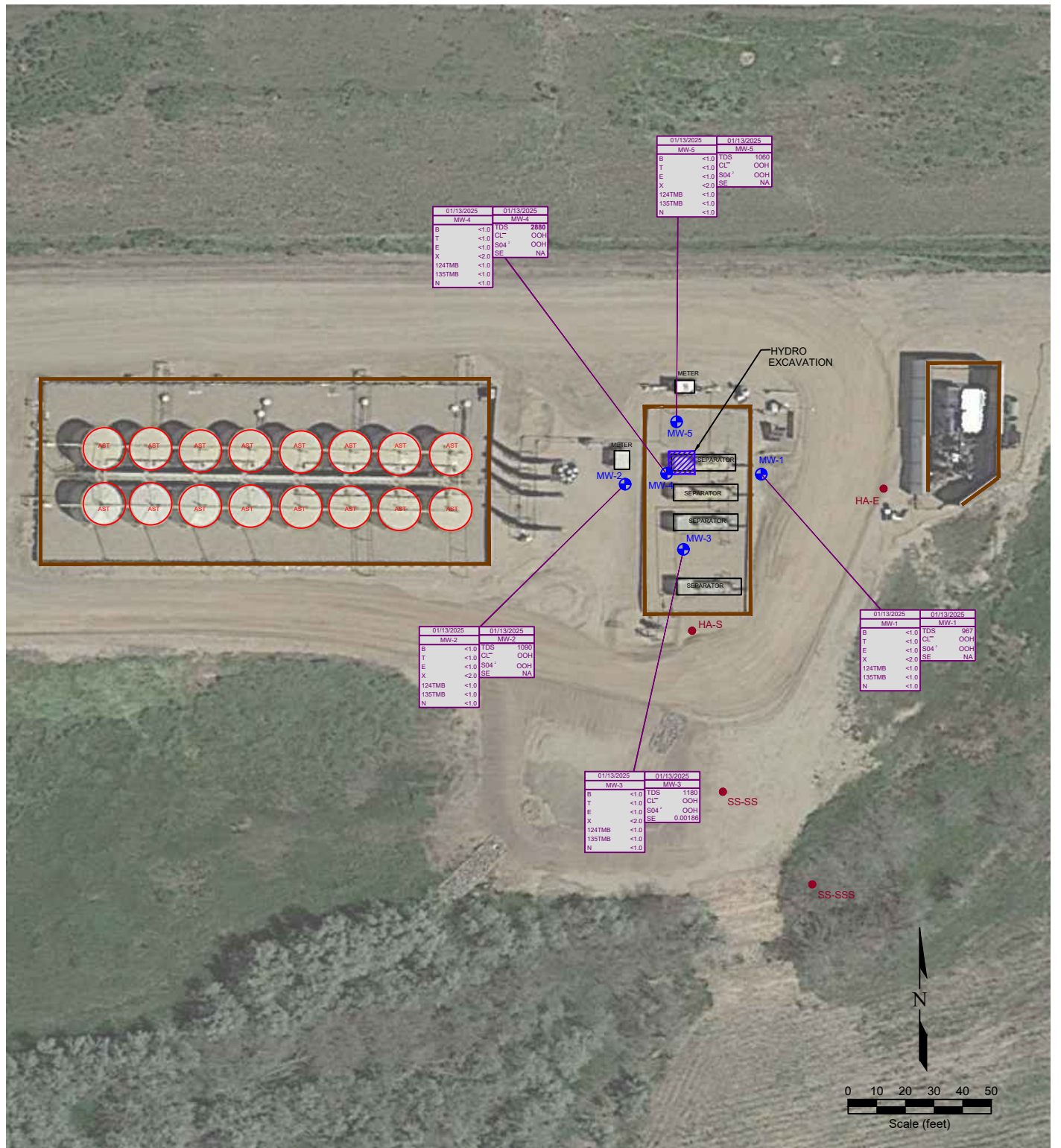
- HAND AUGURED SOIL BORING
 - HYDROEXCAVATION
 - ◻ FORMER FACILITY
 - ▨ CONTAINMENT BERM
 - ABOVE GROUND STORAGE TANK
 - ▭ BUILDING
 - ▬ CONTAINMENT WALL
 - ▬ EXTENT OF EXCAVATION
 - ▬ FENCE LINE
-
- (87.20) NM GROUND WATER ELEVATION (ft above arbitrary datum)
 - NOT MEASURED
 - WATER TABLE CONTOUR
 - GROUND WATER FLOW DIRECTION

Figure 3
INFERRED GROUNDWATER CONTOUR MAP
 January 13, 2025

PDC ENERGY, INC. ~ PHELPS 11-32CHZ
 SENE Section 32, T1N, R66W, 6th PM
 Weld County, Colorado
 40.01110°, -104.79257°

Project No. C023-233	API #	Facility # 433548
Date 4/1/25	Remediation #	Filename 23233Q





LEGEND

- HAND AUGURED SOIL BORING
- MONITORING WELL LOCATION
- ▭ HYDROEXCAVATION
- ABOVE GROUND STORAGE TANK
- ▭ FORMER FACILITY
- ▭ BUILDING
- ▭ CONTAINMENT BERM
- ▭ CONTAINMENT WALL
- ▭ EXTENT OF EXCAVATION
- ▭ FENCE LINE
- NA NOT ANALYZED

01/13/2025	DATE SAMPLED	01/13/2025	DATE SAMPLED
MW-1	SAMPLE ID	MW-1	SAMPLE ID
B	BENZENE (ug/L)	TDS	TOTAL DISSOLVED SOLIDS (mg/L)
T	TOLUENE (ug/L)	CL ⁻	CHLORIDE ION (mg/L)
E	ETHYLBENZENE (ug/L)	SO4 ⁻	SULFATE ION (mg/L)
X	TOTAL XYLENES (ug/L)	SE	SELENIUM (mg/L)
124TMB	1,2,4-TRIMETHYLBENZENE (ug/L)		
135TMB	1,3,5-TRIMETHYLBENZENE (ug/L)		
N	NAPHTHALENE (ug/L)		

Figure 4
GROUNDWATER CHEMISTRY MAP

PDC ENERGY, INC. ~ PHELPS 11-32CHZ
SENE Section 32, T1N, R66W, 6th PM
Weld County, Colorado
40.01110°, -104.79257°

Project No. C023-233	API #	Facility # 433548	
Date 4/9/25	Remediation #	Filename 23233Q	