

DATE:	June 2024
DESIGNED BY:	J. Whritenour
DRAWN BY:	L. Reed



Tasman, Inc.
4725 Independence St.
Wheat Ridge, CO 80033




Noble Energy, Inc. – DJ Basin
Wolfe USX CC07-16 Tank Battery
SESW Sec. 7-T4N-R63W
Weld County, Colorado

Site Location Map

Figure
1



Legend

-  Soil Boring Location
-  Excavation Extent – November 2024
(Collected via Trimble GPS)
-  Excavation Extent – May 2024
(Collected via Trimble GPS)

Notes

- 1) All locations are approximate unless otherwise noted.
- 2) Buried infrastructure has been spatially projected.

GPS – Global Positioning System

0 ft. 20 ft. 40 ft.

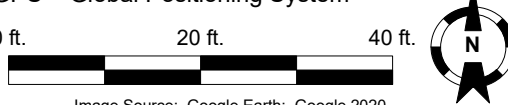


Image Source: Google Earth; Google 2020

BKG05@0.5' (1/14/2025) PID = 1.0 ppm
BKG05@1' (1/14/2025) PID = 0.6 ppm
BKG05@2' (1/14/2025) PID = 0.5 ppm
BKG05@2.5' (1/14/2025) PID = 0.2 ppm
BKG05@4' (1/14/2025) PID = 0.4 ppm

BKG04@0.5' (1/14/2025) PID = 0.8 ppm
BKG04@1' (1/14/2025) PID = 0.4 ppm
BKG04@2' (1/14/2025) PID = 0.2 ppm
BKG04@2.5' (1/14/2025) PID = 0.0 ppm
BKG04@4' (1/14/2025) PID = 0.0 ppm

BKG01@0.5' (1/14/2025) PID = 0.3 ppm
BKG01@1' (1/14/2025) PID = 0.1 ppm
BKG01@2' (1/14/2025) PID = 0.2 ppm
BKG01@2.5' (1/14/2025) PID = 0.3 ppm
BKG01@4' (1/14/2025) PID = 0.4 ppm

BKG02@0.5' (1/14/2025) PID = 0.7 ppm
BKG02@1' (1/14/2025) PID = 0.4 ppm
BKG02@2' (1/14/2025) PID = 0.5 ppm
BKG02@2.5' (1/14/2025) PID = 0.2 ppm
BKG02@4' (1/14/2025) PID = 0.5 ppm

BKG03@0.5' (1/14/2025) PID = 0.7 ppm
BKG03@1' (1/14/2025) PID = 0.6 ppm
BKG03@2' (1/14/2025) PID = 0.5 ppm
BKG03@2.5' (1/14/2025) PID = 0.1 ppm
BKG03@4' (1/14/2025) PID = 0.6 ppm

DATE:	01/20/2025
DESIGNED BY:	J. Whritenour
DRAWN BY:	E. Lambert

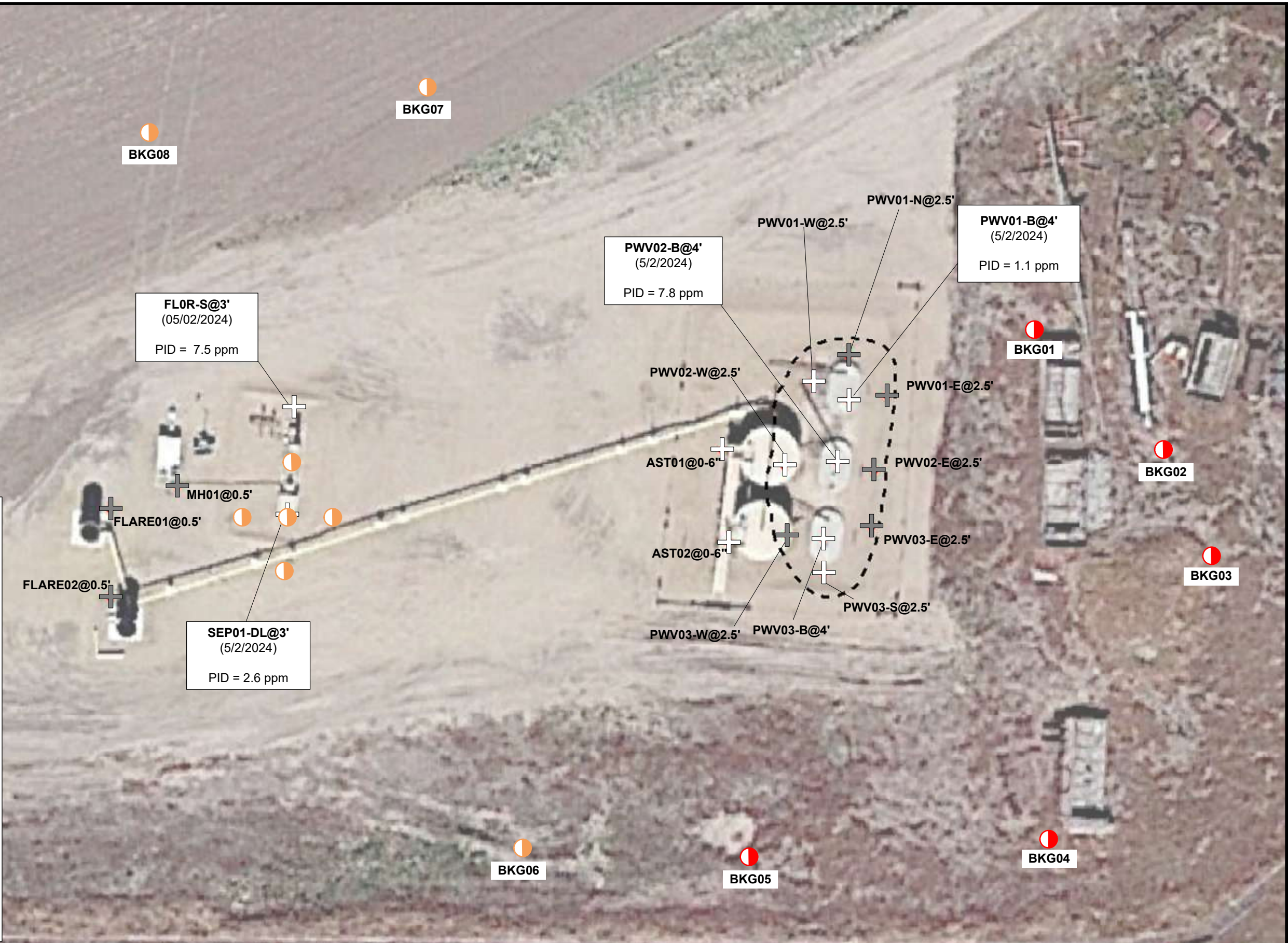


Tasman, Inc.
4725 Independence St.
Wheat Ridge, CO 80033

Noble Energy, Inc. – 100322 – DJ Basin
Wolfe USX CC07-16 Facility
SESW, Section 7, Township 4 North, Range 63 West
Weld County, Colorado

Soil Boring
Location Map

FIGURE
2



Legend

- Soil Boring Location
- Proposed Soil Boring Location
- Excavation Extent (Collected via Trimble GPS)
- Soil Sample Location – Field Screen (Collected via Trimble GPS)
- Soil Sample Location – Lab Analyzed (Collected via Trimble GPS)

Notes

- 1) All locations are approximate unless otherwise noted.
- 2) Buried infrastructure has been spatially projected.

GPS – Global Positioning System
 PID – Photoionization Detector
 ppm – Parts per million

0 ft. 20 ft. 40 ft.

Image Source: Google Earth; Google 2020

DATE:	March 21, 2025
DESIGNED BY:	J. Woffinden
DRAWN BY:	E. Lambert

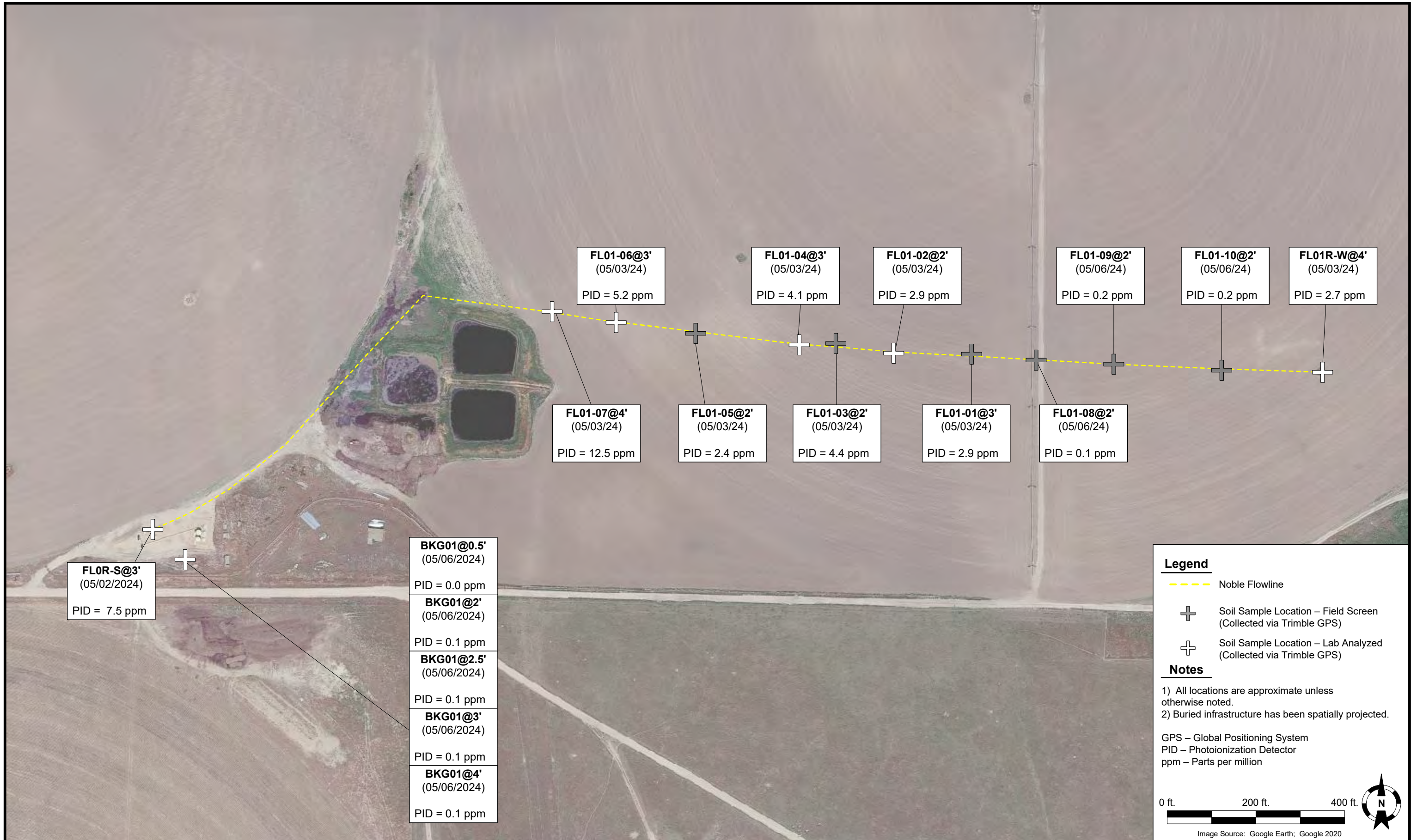


Tasman, Inc.
 4725 Independence St.
 Wheat Ridge, CO 80033

Noble Energy, Inc. – 100322 – DJ Basin
 Wolfe USX CC07-16 Facility
 SESW, Section 7, Township 4 North, Range 63 West
 Weld County, Colorado

Proposed Soil Boring
 Location Map

FIGURE
 3



FL0R-S@3'
 (05/02/2024)
 PID = 7.5 ppm

BKG01@0.5'
 (05/06/2024)
 PID = 0.0 ppm

BKG01@2'
 (05/06/2024)
 PID = 0.1 ppm

BKG01@2.5'
 (05/06/2024)
 PID = 0.1 ppm

BKG01@3'
 (05/06/2024)
 PID = 0.1 ppm

BKG01@4'
 (05/06/2024)
 PID = 0.1 ppm

FL01-06@3'
 (05/03/24)
 PID = 5.2 ppm

FL01-07@4'
 (05/03/24)
 PID = 12.5 ppm

FL01-04@3'
 (05/03/24)
 PID = 4.1 ppm

FL01-05@2'
 (05/03/24)
 PID = 2.4 ppm

FL01-02@2'
 (05/03/24)
 PID = 2.9 ppm

FL01-03@2'
 (05/03/24)
 PID = 4.4 ppm

FL01-01@3'
 (05/03/24)
 PID = 2.9 ppm

FL01-09@2'
 (05/06/24)
 PID = 0.2 ppm

FL01-08@2'
 (05/06/24)
 PID = 0.1 ppm

FL01-10@2'
 (05/06/24)
 PID = 0.2 ppm

FL01R-W@4'
 (05/03/24)
 PID = 2.7 ppm

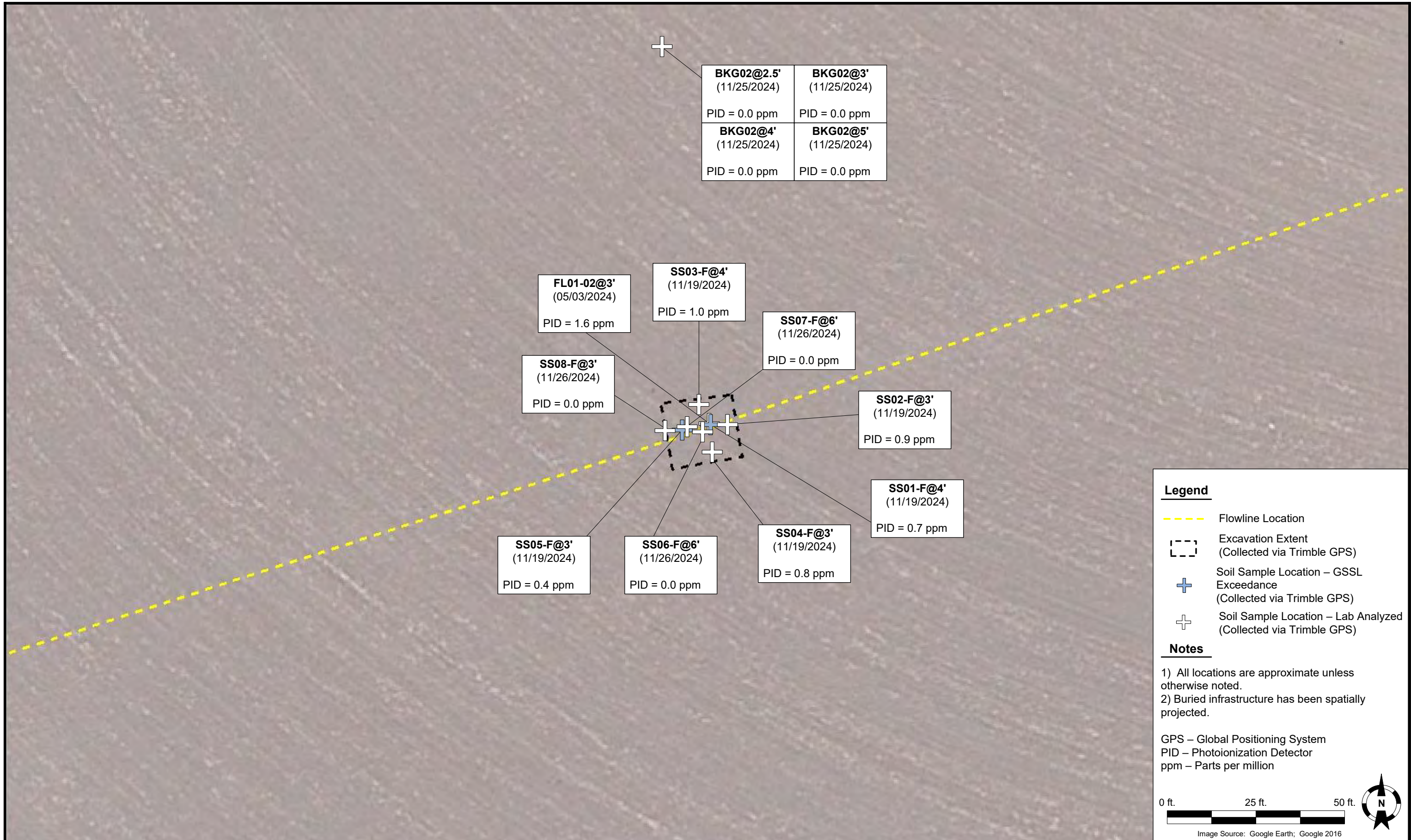
DATE:	5/3/2024
DESIGNED BY:	JW
DRAWN BY:	JW

Tasman, Inc.
 6855 W 119th Avenue
 Broomfield, CO 80020

Noble Energy, Inc. – DJ Basin
Wolfe USX CC07-16
 SWSE, Section 7, Township 4 North, Range 63 West
 Weld County, Colorado

SOIL SAMPLE LOCATION
MAP
 (05/03/2024 & 05/06/2024)

FIGURE
4



Legend

- Flowline Location
- - - Excavation Extent (Collected via Trimble GPS)
- + Soil Sample Location – GSSL Exceedance (Collected via Trimble GPS)
- + Soil Sample Location – Lab Analyzed (Collected via Trimble GPS)

Notes

- 1) All locations are approximate unless otherwise noted.
- 2) Buried infrastructure has been spatially projected.

GPS – Global Positioning System
 PID – Photoionization Detector
 ppm – Parts per million


0 ft. 25 ft. 50 ft. 

Image Source: Google Earth; Google 2016

DATE: 11/26/2024

DESIGNED BY: J. Whritenour

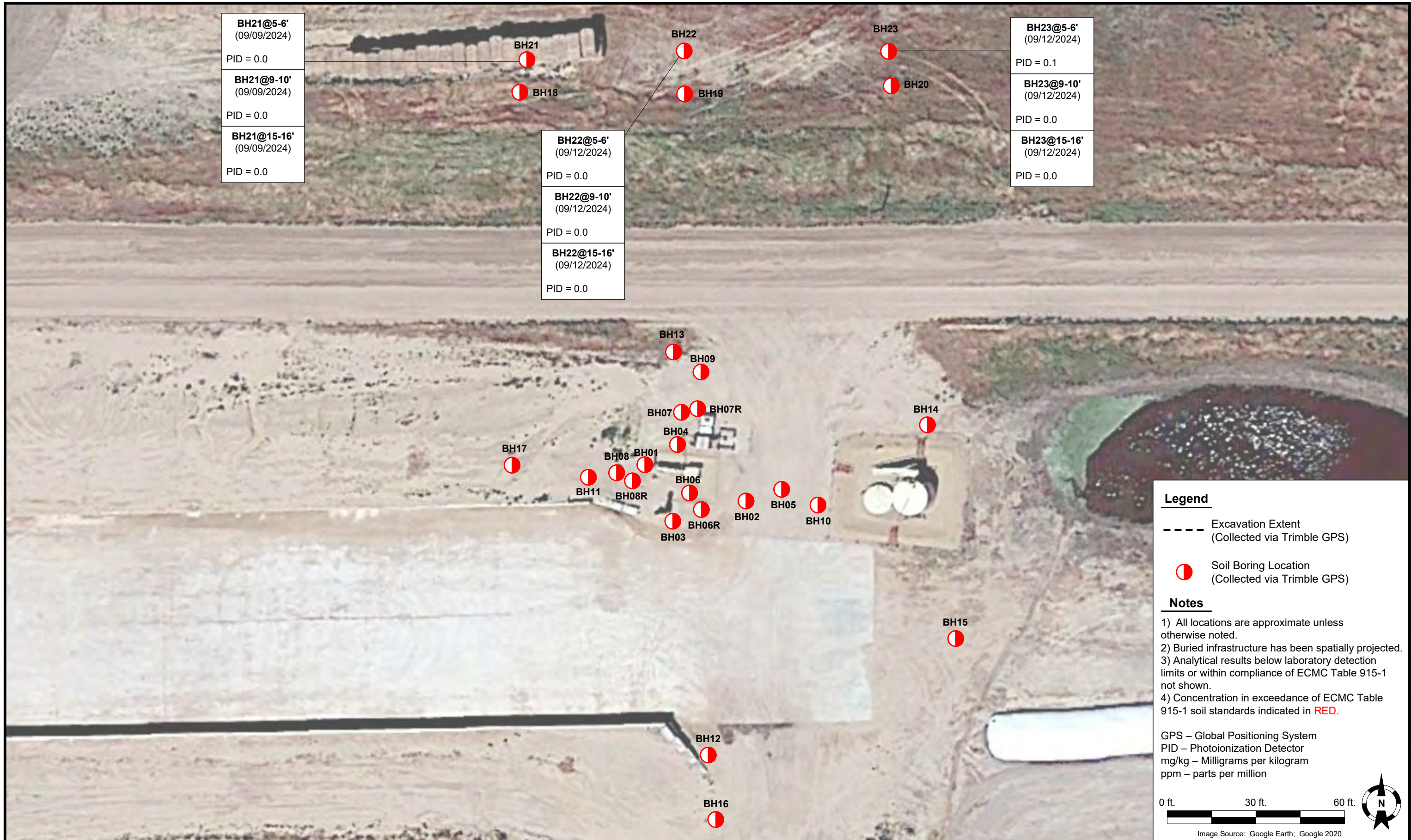
DRAWN BY: J. Woffinden



Noble Energy, Inc. (100322) – DJ Basin
Wolfe USX CC 7-23
 SWSE, Section 7, Township 4N North, Range 63 West
 Weld County, Colorado

**EXCAVATION
 SITE MAP
 (FL01-02)**

**FIGURE
 5**



BH21@5-6'
(09/09/2024)
PID = 0.0

BH21@9-10'
(09/09/2024)
PID = 0.0

BH21@15-16'
(09/09/2024)
PID = 0.0

BH22@5-6'
(09/12/2024)
PID = 0.0

BH22@9-10'
(09/12/2024)
PID = 0.0

BH22@15-16'
(09/12/2024)
PID = 0.0

BH23@5-6'
(09/12/2024)
PID = 0.1

BH23@9-10'
(09/12/2024)
PID = 0.0

BH23@15-16'
(09/12/2024)
PID = 0.0

DATE:	11/1/2024
DESIGNED BY:	JW
DRAWN BY:	AE

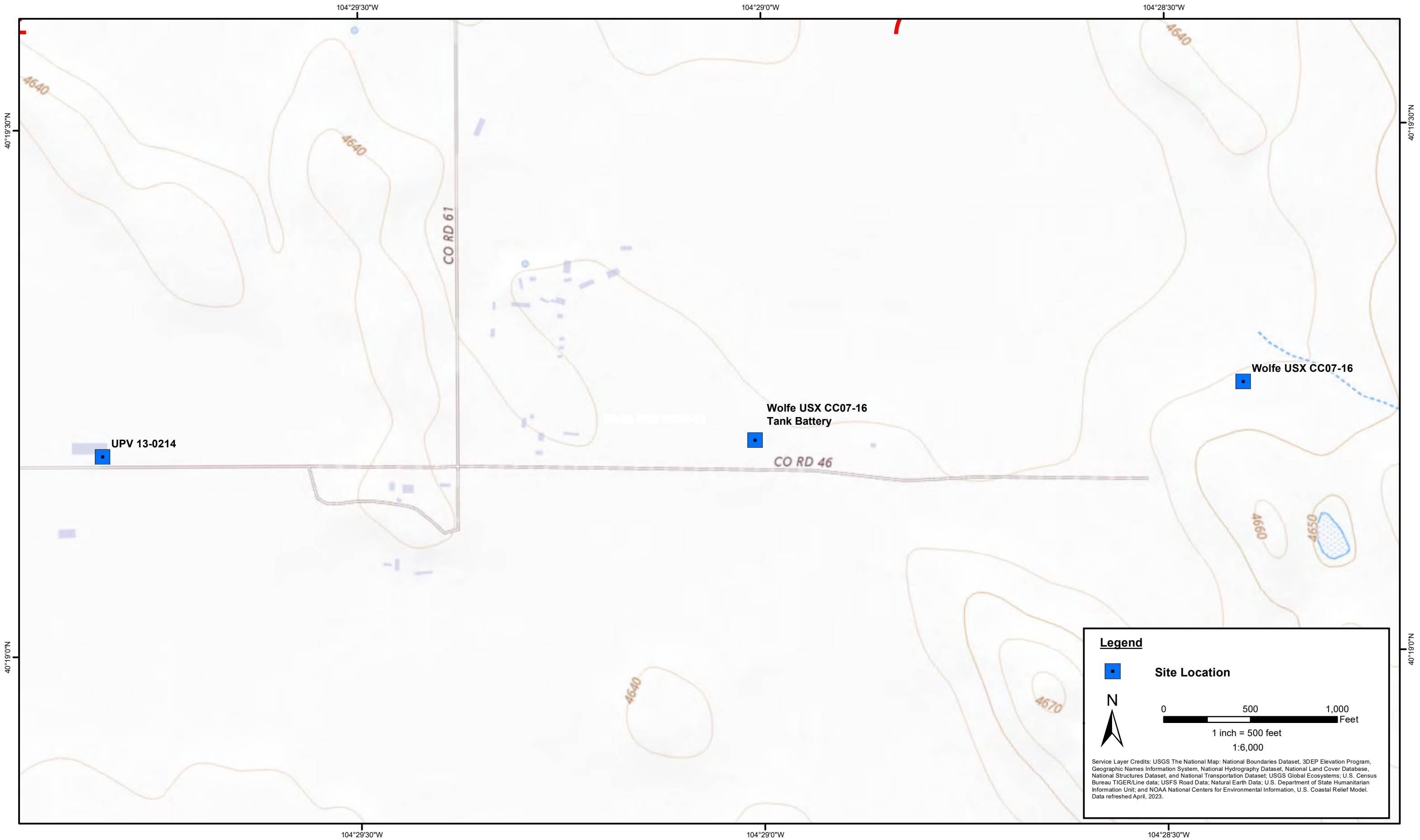


TASMAN
 Tasman, Inc.
 6855 W 119th Avenue
 Broomfield, CO 80020

Noble Energy, Inc. – DJ Basin
UPV 13-0214
 NWNE, Section 13, Township 4 North, Range 64 West
 Weld County, Colorado

Soil Boring Location Map

FIGURE 6



DATE:	March 2025
DESIGNED BY:	J. Whritenour
DRAWN BY:	J. Woffinden



Noble Energy, Inc. - 100322 - DJ Basin
Wolfe USX CC07-16
 SWSE, Section 7 Township 4 North, Range 63 West
 Weld County, Colorado

Site Location Map

Figure
7

TABLE 1
FIELD DATA SUMMARY TABLE
NOBLE ENERGY, INC (100322)
WOLFE USX CC07-16, WELD COUNTY, COLORADO
REM # 33389

Sample ID	Sample Date	Depth (ft. bgs)	GPS Data Latitude/Longitude		PDOP Value	VOC Concentration (ppm)
FLARE01 @ 0-6"	5/2/2024	0 - 0.5	40.319934	-104.482968	1.0	1.3
FLARE02 @ 0-6"	5/2/2024	0 - 0.5	40.319885	-104.482967	1.0	1.9
FL01R-S@3'	5/2/2024	3	40.319984	-104.482865	0.9	7.5
MH01 @ 0-6"	5/2/2024	0 - 0.5	40.319946	-104.482918	0.8	2.0
PWV01-B @ 4'	5/2/2024	4	40.319991	-104.482435	1.0	1.1
PWV01-N @ 2.5'	5/2/2024	2.5	40.320015	-104.482434	0.8	1.1
PWV01-W @ 2.5'	5/2/2024	2.5	40.320002	-104.482460	0.9	3.9
PWV01-E @ 2.5'	5/2/2024	2.5	40.319993	-104.482407	0.8	0.8
PWV02-B @ 4'	5/2/2024	4	40.319957	-104.482443	0.9	7.8
PWV02-W @ 2.5'	5/2/2024	2.5	40.319955	-104.482482	0.9	1.7
PWV02-E @ 2.5'	5/2/2024	2.5	40.319952	-104.482416	0.9	0.5
PWV03-B @ 4'	5/2/2024	4	40.319914	-104.482454	0.9	5.2
PWV03-W @ 2.5'	5/2/2024	2.5	40.319917	-104.482480	0.9	1.1
PWV03-S @ 2.5'	5/2/2024	2.5	40.319896	-104.482452	1.0	5.3
PWV03-E @ 2.5'	5/2/2024	2.5	40.319921	-104.482419	0.8	0.6
SEP01-DL @ 3'	5/2/2024	3	NC	NC	NC	2.6
AST01 @ 0-6"	5/2/2024	0 - 0.5	40.319964	-104.482526	0.8	13.9
AST02 @ 0-6"	5/2/2024	0 - 0.5	40.319913	-104.482521	0.9	3.2
SS01@2'	11/13/2024	2	40.319962	-104.482526	0.9	0.4
SS03@1'	11/13/2024	1	40.319964	-104.482548	0.9	0.4
SS04@1'	11/13/2024	1	40.319947	-104.482523	0.9	0.4

TABLE 1
FIELD DATA SUMMARY TABLE
NOBLE ENERGY, INC (100322)
WOLFE USX CC07-16, WELD COUNTY, COLORADO
REM # 33389

Sample ID	Sample Date	Depth (ft. bgs)	GPS Data Latitude/Longitude		PDOP Value	VOC Concentration (ppm)
SS02@1'	11/13/2024	1	40.319979	-104.482531	0.9	0.3
SS05@1'	11/13/2024	1	40.319965	-104.482503	1.0	0.2
BKG01@0.5'	1/14/2025	0.5	40.320033	-104.482295	1.1	0.3
BKG01@1'	1/14/2025	1	40.320033	-104.482295	1.1	0.1
BKG01@2'	1/14/2025	2	40.320033	-104.482295	1.1	0.2
BKG01@2.5'	1/14/2025	2.5	40.320033	-104.482295	1.1	0.3
BKG01@4'	1/14/2025	4	40.320033	-104.482295	1.1	0.4
BKG02@0.5'	1/14/2025	0.5	40.319959	-104.482193	1.0	0.7
BKG02@1'	1/14/2025	1	40.319959	-104.482193	1.0	0.4
BKG02@2'	1/14/2025	2	40.319959	-104.482193	1.0	0.5
BKG02@2.5'	1/14/2025	2.5	40.319959	-104.482193	1.0	0.2
BKG02@4'	1/14/2025	4	40.319959	-104.482193	1.0	0.5
BKG03@0.5'	1/14/2025	0.5	40.319902	-104.482170	1.1	0.7
BKG03@1'	1/14/2025	1	40.319902	-104.482170	1.1	0.6
BKG03@2'	1/14/2025	2	40.319902	-104.482170	1.1	0.5
BKG03@2.5'	1/14/2025	2.5	40.319902	-104.482170	1.1	0.1
BKG03@4'	1/14/2025	4	40.319902	-104.482170	1.1	0.6
BKG04@0.5'	1/14/2025	0.5	40.319749	-104.482288	1.0	0.8
BKG04@1'	1/14/2025	1	40.319749	-104.482288	1.0	0.4
BKG04@2'	1/14/2025	2	40.319749	-104.482288	1.0	0.2
BKG04@2.5'	1/14/2025	2.5	40.319749	-104.482288	1.0	0.0
BKG04@4'	1/14/2025	4	40.319749	-104.482288	1.0	0.0

TABLE 1
FIELD DATA SUMMARY TABLE
NOBLE ENERGY, INC (100322)
WOLFE USX CC07-16, WELD COUNTY, COLORADO
REM # 33389

Sample ID	Sample Date	Depth (ft. bgs)	GPS Data Latitude/Longitude		PDOP Value	VOC Concentration (ppm)
BKG05@0.5'	1/14/2025	0.5	40.319738	-104.482509	0.9	1.0
BKG05@1'	1/14/2025	1	40.319738	-104.482509	0.9	0.6
BKG05@2'	1/14/2025	2	40.319738	-104.482509	0.9	0.5
BKG05@2.5'	1/14/2025	2.5	40.319738	-104.482509	0.9	0.2
BKG05@4'	1/14/2025	4	40.319738	-104.482509	0.9	0.4
BKG01@0.5' ⁽³⁾	5/6/2024	0.5	40.319796	-104.482594	NC	0.0
BKG01@2' ⁽³⁾	5/6/2024	2	40.319796	-104.482594	NC	0.1
BKG01@2.5' ⁽³⁾	5/6/2024	2.5	40.319796	-104.482594	NC	0.1
BKG01@3' ⁽³⁾	5/6/2024	3	40.319796	-104.482594	NC	0.1
BKG01@4' ⁽³⁾	5/6/2024	4	40.319796	-104.482594	NC	0.1
BKG02@2.5' ⁽³⁾	11/25/2024	2.5	40.322253	-104.476823	0.8	0.0
BKG02@3' ⁽³⁾	11/25/2024	3	40.322253	-104.476823	0.8	0.0
BKG02@4' ⁽³⁾	11/25/2024	4	40.322253	-104.476823	0.8	0.0
BKG02@5' ⁽³⁾	11/25/2024	5	40.322253	-104.476823	0.8	0.0
BH21@5-6' ⁽⁴⁾	9/9/2024	5-6	40.319823	-104.496986	NC	0.0
BH21@9-10' ⁽⁴⁾	9/9/2024	9-10	40.319823	-104.496986	NC	0.0
BH21@15-16' ⁽⁴⁾	9/9/2024	15-16	40.319823	-104.496986	NC	0.0
BH23@5-6' ⁽⁴⁾	9/12/2024	5-6	40.319821	-104.496541	NC	0.1
BH23@9-10' ⁽⁴⁾	9/12/2024	9-10	40.319821	-104.496541	NC	0.0
BH23@15-16' ⁽⁴⁾	9/12/2024	15-16	40.319821	-104.496541	NC	0.0

Notes:

TABLE 1
FIELD DATA SUMMARY TABLE
NOBLE ENERGY, INC (100322)
WOLFE USX CC07-16, WELD COUNTY, COLORADO
REM # 33389

Sample ID	Sample Date	Depth (ft. bgs)	GPS Data Latitude/Longitude	PDOP Value	VOC Concentration (ppm)
-----------	-------------	-----------------	--------------------------------	------------	----------------------------

1. Global Positioning System (GPS) data is provided in decimal degrees using North American Datum (NAD) 83 UTMZone 13 North.
2. Volatile organic compound (VOC) concentrations are measured in the field using a photoionization detector (PID).
3. Samples collected under nearby Wolfe USX CC07-23 Flowline (REM# 33291) project.
4. Samples collected under nearby UPV 13-0214 project (REM# 30786) from native material outside of the influence of oil and gas infrastructure.

PDOP = Position Dilution of Precision

ppm = Parts per million

in. = Inches

ft. = Feet

bgs = Below ground surface

NC = Not collected

TABLE 2
SUMMARY OF VOLATILE ORGANIC SOIL CHEMISTRY DATA
NOBLE ENERGY, INC (100322)
WOLFE USX CC07-16, WELD COUNTY, COLORADO
REM # 33389

Sample ID	Sample Date	Depth (ft)	Benzene (mg/kg)	Toluene (mg/kg)	Ethyl-Benzene (mg/kg)	Xylenes (mg/kg)	1,2,4-Trimethyl-Benzene (mg/kg)	1,3,5-Trimethyl-Benzene (mg/kg)	Naphthalene (mg/kg)	TPH (mg/kg)	TPH GRO (mg/kg)	TPH DRO (mg/kg)	TPH ORO (mg/kg)
ECMC Table 915-1 Limits (Residential SSL)			1.2	490	5.8	58	30	27	2	500	500**		
ECMC Table 915-1 Limits (Protection of Groundwater SSL)			0.0026	0.69	0.78	9.9	0.0081	0.0087	0.0038	500	500**		
FL01R-S@3'	05/02/2024	3	<0.0020	<0.0050	<0.0050	<0.010	<0.0050	<0.0050	<0.0038	<50	<0.50	<50	<50
AST01@0-6"	05/02/2024	0 - 0.5	<0.0020	<0.0050	<0.0050	<0.010	<0.0050	<0.0050	<0.0038	<500	<0.50	<50	<50
AST02@0-6"	05/02/2024	0 - 0.5	<0.0020	<0.0050	<0.0050	<0.010	<0.0050	<0.0050	<0.0038	<500	<0.50	<50	<50
PWV01-B@4'	05/02/2024	4	<0.0020	<0.0050	<0.0050	<0.010	<0.0050	<0.0050	<0.0038	<500	<0.50	<50	<50
PWV01-W@2.5'	05/02/2024	2.5	<0.0020	<0.0050	<0.0050	<0.010	<0.0050	<0.0050	<0.0038	<500	<0.50	<50	<50
PWV02-B@4'	05/02/2024	4	<0.0020	<0.0050	<0.0050	<0.010	<0.0050	<0.0050	<0.0038	<500	<0.50	<50	<50
PWV02-W@2.5'	05/02/2024	2.5	<0.0020	<0.0050	<0.0050	<0.010	<0.0050	<0.0050	<0.0038	<500	<0.50	<50	<50
PWV03-B@4'	05/02/2024	4	<0.0020	<0.0050	<0.0050	<0.010	<0.0050	<0.0050	<0.0038	<500	<0.50	<50	<50
PWV03-S@2.5'	05/02/2024	2.5	<0.0020	<0.0050	<0.0050	<0.010	<0.0050	<0.0050	<0.0038	<500	<0.50	<50	<50
SEP01-DL@3'	05/02/2024	3	<0.0020	<0.0050	<0.0050	<0.010	<0.0050	<0.0050	<0.0038	110	<0.50	110	<50
SS01@2'	11/13/2024	2	<0.0020	<0.0050	<0.0050	<0.010	<0.0050	<0.0050	<0.0038	<500	<0.50	<50	<500
SS02@1'	11/13/2024	1	<0.0020	<0.0050	<0.0050	<0.010	<0.0050	<0.0050	<0.0038	<500	<0.50	<50	<500
SS03@1'	11/13/2024	1	<0.0020	<0.0050	<0.0050	<0.010	<0.0050	<0.0050	<0.0038	<500	<0.50	<50	<500
SS04@1'	11/13/2024	1	<0.0020	<0.0050	<0.0050	<0.010	<0.0050	<0.0050	<0.0038	<500	<0.50	<50	<500
SS05@1'	11/13/2024	1	<0.0020	<0.0050	<0.0050	<0.010	<0.0050	<0.0050	<0.0038	<500	<0.50	<50	<500
BH21@5-6 ⁽¹⁾	9/9/2024	5-6	<0.0020	<0.0050	<0.0050	<0.010	<0.0050	<0.0050	<0.0038	<50	<0.50	<50	<50
BH21@9-10 ⁽¹⁾	9/9/2024	9-10	<0.0020	<0.0050	<0.0050	<0.010	<0.0050	<0.0050	<0.0038	<50	<0.50	<50	<50
BH21@15-16 ⁽¹⁾	9/9/2024	15-16	<0.0020	<0.0050	<0.0050	<0.010	<0.0050	<0.0050	<0.0038	<50	<0.50	<50	<50
BH23@5-6 ⁽¹⁾	9/12/2024	5-6	<0.0020	<0.0050	<0.0050	<0.010	<0.0050	<0.0050	<0.0038	<50	<0.50	<50	<50
BH23@9-10 ⁽¹⁾	9/12/2024	9-10	<0.0020	<0.0050	<0.0050	<0.010	<0.0050	<0.0050	<0.0038	<50	<0.50	<50	<50
BH23@15-16 ⁽¹⁾	9/12/2024	15-16	<0.0020	<0.0050	<0.0050	<0.010	<0.0050	<0.0050	<0.0038	<50	<0.50	<50	<50

Notes:

1. Samples collected under nearby UPV 13-0214 project (REM# 30786) from native material outside of the influence of oil and gas infrastructure.
2. **Bold** values exceed the ECMC Table 915-1 limit(s).
3. Pink & blue highlighted soil analytical values indicate an exceedance of the referenced soil screening level (SSL).
4. * Indicates laboratory minimum detection limit in excess of SSL.
5. ** Summation of GRO+DRO+ORO must be less than 500 mg/kg.
5. Samples collected under nearby UPV 13-0214 project (REM# 30786) from native material outside of the influence of oil and gas infrastructure.

ECMC = Energy & Carbon Management Commission

(<) = Analytical result is less than the indicated laboratory reporting limit.

TPH-GRO = Total petroleum hydrocarbons - gasoline range organics

TPH-DRO = Total petroleum hydrocarbons - diesel range organics

TPH-ORO = Total petroleum hydrocarbons - oil range organics

mg/kg = Milligrams per kilogram

ft. = Feet

bgs = Below ground surface

 = Source material characterization sample, excavated and transported off site for disposal.

TABLE 3
SUMMARY OF POLYCYCLIC AROMATIC HYDROCARBON SOIL CHEMISTRY DATA
NOBLE ENERGY, INC (100322)
WOLFE USX CC07-16, WELD COUNTY, COLORADO
REM # 33389

Sample ID	Sample Date	Depth (ft)	Acenaphthene (mg/kg)	Anthracene (mg/kg)	Benzo (a) Anthracene (mg/kg)	Benzo (a) Pyrene (mg/kg)	Benzo (b) Fluoranthene (mg/kg)	Benzo (k) Fluoranthene (mg/kg)	Chrysene (mg/kg)	Dibenzo (a,h) Anthracene (mg/kg)	Fluoranthene (mg/kg)	Fluorene (mg/kg)	Indeno (1,2,3-cd) Pyrene (mg/kg)	Pyrene (mg/kg)	1-Methyl - Naphthalene (mg/kg)	2-Methyl - Naphthalene (mg/kg)
ECMC Table 915-1 Limits (Residential SSL)			360	1800	1.1	0.11	1.1	11	110	0.11	240	240	1.1	180	18	24
ECMC Table 915-1 Limits (Protection of Groundwater SSL)			0.55	5.8	0.011	0.24	0.3	2.9	9	0.096	8.9	0.54	0.98	1.3	0.006	0.019
FL01R-S@3'	05/02/2024	3	<0.00500	<0.00500	<0.00500	<0.00500	<0.00500	<0.00500	<0.00500	<0.00500	<0.00500	<0.00500	<0.00500	<0.00500	<0.00500	<0.00500
AST01@0-6"	05/02/2024	0 - 0.5	<0.00500	<0.00500	<0.00500	<0.00500	<0.00500	<0.00500	<0.00500	<0.00500	<0.00500	<0.00500	<0.00500	<0.00500	0.0101	0.0218
AST02@0-6"	05/02/2024	0 - 0.5	<0.00500	<0.00500	<0.00500	<0.00500	<0.00500	<0.00500	<0.00500	<0.00500	<0.00500	<0.00500	<0.00500	<0.00500	<0.00500	<0.00500
PWV01-B@4'	05/02/2024	4	<0.00500	<0.00500	<0.00500	<0.00500	<0.00500	<0.00500	<0.00500	<0.00500	<0.00500	<0.00500	<0.00500	<0.00500	<0.00500	<0.00500
PWV01-W@2.5'	05/02/2024	2.5	<0.00500	<0.00500	<0.00500	<0.00500	<0.00500	<0.00500	<0.00500	<0.00500	<0.00500	<0.00500	<0.00500	<0.00500	<0.00500	<0.00500
PWV02-B@4'	05/02/2024	4	<0.00500	<0.00500	<0.00500	<0.00500	<0.00500	<0.00500	<0.00500	<0.00500	<0.00500	<0.00500	<0.00500	<0.00500	<0.00500	<0.00500
PWV02-W@2.5'	05/02/2024	2.5	<0.00500	<0.00500	<0.00500	<0.00500	<0.00500	<0.00500	<0.00500	<0.00500	<0.00500	<0.00500	<0.00500	<0.00500	<0.00500	0.00697
PWV03-B@4'	05/02/2024	4	<0.00500	<0.00500	<0.00500	<0.00500	<0.00500	<0.00500	<0.00500	<0.00500	<0.00500	<0.00500	<0.00500	<0.00500	<0.00500	<0.00500
PWV03-S@2.5'	05/02/2024	2.5	<0.00500	<0.00500	<0.00500	<0.00500	<0.00500	<0.00500	<0.00500	<0.00500	<0.00500	<0.00500	<0.00500	<0.00500	<0.00500	<0.00500
SEP01-DL@3'	05/02/2024	3	<0.00500	<0.00500	<0.00500	<0.00500	<0.00500	<0.00500	<0.00500	<0.00500	<0.00500	<0.00500	<0.00500	<0.00500	<0.00500	<0.00500
SS01@2'	11/13/2024	2	<0.00500	<0.00500	<0.00500	<0.00500	<0.00500	<0.00500	<0.00500	<0.00500	<0.00500	<0.00500	<0.00500	<0.00500	<0.00500	<0.00500
SS02@1'	11/13/2024	1	<0.00500	<0.00500	<0.00500	<0.00500	<0.00500	<0.00500	<0.00500	<0.00500	<0.00500	<0.00500	<0.00500	<0.00500	<0.00500	<0.00500
SS03@1'	11/13/2024	1	<0.00500	<0.00500	<0.00500	<0.00500	<0.00500	<0.00500	<0.00500	<0.00500	<0.00500	<0.00500	<0.00500	<0.00500	<0.00500	<0.00500
SS04@1'	11/13/2024	1	<0.00500	<0.00500	<0.00500	<0.00500	<0.00500	<0.00500	<0.00500	<0.00500	<0.00500	<0.00500	<0.00500	<0.00500	<0.00500	<0.00500
SS05@1'	11/13/2024	1	<0.00500	<0.00500	<0.00500	<0.00500	<0.00500	<0.00500	<0.00500	<0.00500	<0.00500	<0.00500	<0.00500	<0.00500	<0.00500	<0.00500
BH21@5-6 ⁽¹⁾	9/9/2024	5-6	<0.00500	<0.00500	<0.00500	<0.00500	<0.00500	<0.00500	<0.00500	<0.00500	<0.00500	<0.00500	<0.00500	<0.00500	<0.00500	<0.00500
BH21@9-10 ⁽¹⁾	9/9/2024	9-10	<0.00500	<0.00500	<0.00500	<0.00500	<0.00500	<0.00500	<0.00500	<0.00500	<0.00500	<0.00500	<0.00500	<0.00500	<0.00500	<0.00500
BH21@15-16 ⁽¹⁾	9/9/2024	15-16	<0.00500	<0.00500	<0.00500	<0.00500	<0.00500	<0.00500	<0.00500	<0.00500	<0.00500	<0.00500	<0.00500	<0.00500	<0.00500	<0.00500
BH23@5-6 ⁽¹⁾	9/12/2024	5-6	<0.00500	<0.00500	<0.00500	<0.00500	<0.00500	<0.00500	<0.00500	<0.00500	<0.00500	<0.00500	<0.00500	<0.00500	<0.00500	<0.00500
BH23@9-10 ⁽¹⁾	9/12/2024	9-10	<0.00500	<0.00500	<0.00500	<0.00500	<0.00500	<0.00500	<0.00500	<0.00500	<0.00500	<0.00500	<0.00500	<0.00500	<0.00500	<0.00500
BH23@15-16 ⁽¹⁾	9/12/2024	15-16	<0.00500	<0.00500	<0.00500	<0.00500	<0.00500	<0.00500	<0.00500	<0.00500	<0.00500	<0.00500	<0.00500	<0.00500	<0.00500	<0.00500

Notes:

1. Samples collected under nearby UPV 13-0214 project (REM# 30786) from native material outside of the influence of oil and gas infrastructure.
2. **Bold** values exceed the ECMC Table 915-1 limit(s).
3. Pink & blue highlighted soil analytical values indicate an exceedance of the referenced soil screening level (SSL).
4. * Indicates laboratory minimum detection limit in excess of SSL.

ECMC = Colorado Energy & Carbon Management Commission

(<) = Analytical result is less than the indicated laboratory reporting limit.

ft. = Feet

bgs = Below ground surface

mg/kg = Milligrams per kilogram

 = Source material characterization sample, excavated and transported off site for disposal.

TABLE 4
SUMMARY OF SOIL SUITABILITY FOR RECLAMATION
NOBLE ENERGY, INC(100322)
WOLFE USX CC07-16, WELD COUNTY, COLORADO
REM # 33389

Sample ID	Sample Date	Depth (ft)	pH (Standard Units)	EC (mmhos/cm)	SAR (Standard Units)	Boron (mg/L)
ECMC Table 915-1 Soil Suitability Limits			6 - 8.3	<4	<6	2
FL01R-S@3'	05/02/2024	3	7.75	0.045	0.0416	<2.00
AST01@0-6"	05/02/2024	0 - 0.5	9.12	0.265	1.30	2.73
AST02@0-6"	05/02/2024	0 - 0.5	7.53	0.0944	0.431	<2.00
PWV01-B@4'	05/02/2024	4	9.02	0.271	0.144	<2.00
PWV01-W@2.5'	05/02/2024	2.5	8.19	0.266	0.340	<2.00
PWV02-B@4'	05/02/2024	4	8.40	0.674	2.52	<2.00
PWV02-W@2.5'	05/02/2024	2.5	7.89	0.168	0.319	<2.00
PWV03-B@4'	05/02/2024	4	8.52	0.254	0.287	<2.00
PWV03-S@2.5'	05/02/2024	2.5	8.21	0.157	0.0861	<2.00
SEP01-DL@3'	05/02/2024	3	8.04	0.425	4.12	2.66
SS01@2'	11/13/2024	2	7.99	0.106	0.0137	<2.00
SS02@1'	11/13/2024	1	7.16	0.129	0.0502	<2.00
SS03@1'	11/13/2024	1	7.08	0.0864	0.078	<2.00
SS04@1'	11/13/2024	1	8.27	0.141	0.128	<2.00
SS05@1'	11/13/2024	1	7.08	0.0644	0.034	<2.00
BKG01@0.5'	1/14/2025	0.5	6.89	0.215	0.0157	<2.00
BKG01@1'	1/14/2025	1	7.34	0.110	0.0430	<2.00
BKG01@2'	1/14/2025	2	7.34	0.144	0.0481	<2.00
BKG01@2.5'	1/14/2025	2.5	7.57	0.165	0.160	<2.00
BKG01@4'	1/14/2025	4	8.57	0.194	0.124	<2.00
BKG02@0.5'	1/14/2025	0.5	6.70	0.216	0.0162	<2.00
BKG02@1'	1/14/2025	1	6.66	0.167	0.0232	<2.00
BKG02@2'	1/14/2025	2	7.61	0.179	0.175	<2.00
BKG02@2.5'	1/14/2025	2.5	8.64	0.208	0.379	<2.00
BKG02@4'	1/14/2025	4	7.21	0.269	0.582	<2.00

TABLE 4
SUMMARY OF SOIL SUITABILITY FOR RECLAMATION
NOBLE ENERGY, INC(100322)
WOLFE USX CC07-16, WELD COUNTY, COLORADO
REM # 33389

Sample ID	Sample Date	Depth (ft)	pH (Standard Units)	EC (mmhos/cm)	SAR (Standard Units)	Boron (mg/L)
ECMC Table 915-1 Soil Suitability Limits			6 - 8.3	<4	<6	2
BKG03@0.5'	1/14/2025	0.5	6.94	0.268	0.0156	<2.00
BKG03@1'	1/14/2025	1	7.45	0.106	0.0546	<2.00
BKG03@2'	1/14/2025	2	7.90	1.10	0.0926	<2.00
BKG03@2.5'	1/14/2025	2.5	8.14	0.135	0.0432	<2.00
BKG03@4'	1/14/2025	4	8.10	0.283	0.0720	<2.00
BKG04@0.5'	1/14/2025	0.5	6.53	0.275	0.0299	<2.00
BKG04@1'	1/14/2025	1	6.81	0.0947	0.0269	<2.00
BKG04@2'	1/14/2025	2	7.67	0.172	0.105	<2.00
BKG04@2.5'	1/14/2025	2.5	8.04	0.191	0.101	<2.00
BKG04@4'	1/14/2025	4	7.21	0.137	0.0399	<2.00
BKG05@0.5'	1/14/2025	0.5	6.99	0.116	0.00516	<2.00
BKG05@1'	1/14/2025	1	7.01	0.0879	0.0103	<2.00
BKG05@2'	1/14/2025	2	7.02	0.0851	0.0178	<2.00
BKG05@2.5'	1/14/2025	2.5	7.08	0.0850	0.0125	<2.00
BKG05@4'	1/14/2025	4	7.94	0.152	0.206	<2.00
BKG01@0.5' ⁽¹⁾	5/6/2024	0.5	7.10	0.109	0.215	NA
BKG01@2' ⁽¹⁾	5/6/2024	2	7.75	0.280	0.236	NA
BKG01@2.5' ⁽¹⁾	5/6/2024	2.5	7.75	0.0941	0.241	NA
BKG01@3' ⁽¹⁾	5/6/2024	3	7.85	0.120	0.126	NA
BKG01@4' ⁽¹⁾	5/6/2024	4	8.10	0.151	0.204	NA
BKG02@2.5' ⁽¹⁾	11/25/2024	2.5	8.19	2.530	2.02	<2.00
BKG02@3' ⁽¹⁾	11/25/2024	3	8.16	2.46	1.95	<2.00
BKG02@4' ⁽¹⁾	11/25/2024	4	8.10	4.16	1.98	<2.00
BKG02@5' ⁽¹⁾	11/25/2024	5	8.31	2.16	2.68	<2.00
BH21@5-6' ⁽²⁾	9/9/2024	5-6	8.26	0.255	1.36	<2.00
BH21@9-10' ⁽²⁾	9/9/2024	9-10	8.11	1.15	6.71	<2.00
BH21@15-16' ⁽²⁾	9/9/2024	15-16	8.19	0.982	1.82	<2.00
BH23@5-6' ⁽²⁾	9/12/2024	5-6	8.08	0.163	0.406	NA

TABLE 4
SUMMARY OF SOIL SUITABILITY FOR RECLAMATION
NOBLE ENERGY, INC(100322)
WOLFE USX CC07-16, WELD COUNTY, COLORADO
REM # 33389

Sample ID	Sample Date	Depth (ft)	pH (Standard Units)	EC (mmhos/cm)	SAR (Standard Units)	Boron (mg/L)
ECMC Table 915-1 Soil Suitability Limits			6 - 8.3	<4	<6	2
BH23@9-10 ⁽²⁾	9/12/2024	9-10	9.22	0.200	0.177	NA
BH23@15-16 ⁽²⁾	9/12/2024	15-16	8.78	0.138	0.774	NA
Maximum Background Concentration			9.22	-	-	2.00

Notes:

1. Samples collected under nearby Wolfe USX CC07-23 Flowline (REM# 33291) project.
2. Samples collected under nearby UPV 13-0214 project (REM# 30786) from native material outside of the influence of oil and gas infrastructure.

Bold faced values exceed the ECMC Table 915-1 limit(s), but are within background concentrations.

Bold faced values exceed the ECMC Table 915-1 limit(s) and native background concentrations.

Brown highlighted soil analytical values indicate a regulatory exceedance.

ECMC = Colorado Energy & Carbon Management Commission

EC = Electrical conductivity

SAR = Sodium adsorption ratio

mmhos/cm = millimhos per centimeter

mg/L = milligram per liter

(<) = Analytical result is less than the indicated laboratory reporting limit.

ft. = Feet

bgs = Below ground surface

= Source material characterization sample, excavated and transported off site for disposal.

TABLE 5
SUMMARY OF METALS IN SOIL CHEMISTRY DATA
NOBLE ENERGY, INC (100322)
WOLFE USX CC07-16, WELD COUNTY, COLORADO
REM # 33389

Sample ID	Sample Date	Depth (ft)	Arsenic (mg/kg)	Barium (mg/kg)	Cadmium (mg/kg)	Chromium (VI) ⁽¹⁾ (mg/kg)	Copper (mg/kg)	Lead (mg/kg)	Nickel (mg/kg)	Selenium (mg/kg)	Silver (mg/kg)	Zinc (mg/kg)
ECMC Table 915-1 Limits (Residential SSL)			0.68	15000	71	0.3	3100	400	1500	390	390	23000
ECMC Table 915-1 Limits (Protection of Groundwater SSL)			0.29	82	0.38	0.00067	46	14	26	0.26	0.8	370
FL01R-S@3'	05/02/2024	3	1.98	69.4	0.548	<0.30	7.23	6.13	6.20	<0.260	0.0271	27.8
AST01@0-6"	05/02/2024	0 - 0.5	1.10	49.3	<0.180	<0.30	3.76	5.22	3.20	<0.234	0.0225	13.9
AST02@0-6"	05/02/2024	0 - 0.5	1.08	52.7	<0.200	<0.30	3.79	5.20	3.43	<0.260	0.0270	14.6
PWV01-B@4'	05/02/2024	4	1.67	101	0.242	<0.30	3.82	6.13	4.51	<0.260	0.0334	16.8
PWV01-W@2.5'	05/02/2024	2.5	1.19	47.1	<0.200	<0.30	3.50	4.75	3.14	<0.260	0.0212	13.2
PWV02-B@4'	05/02/2024	4	2.15	145	0.262	<0.30	3.91	6.50	4.99	<0.234	0.0396	16.9
PWV02-W@2.5'	05/02/2024	2.5	1.20	57.6	<0.200	<0.30	3.73	5.29	3.51	<0.260	0.0239	14.6
PWV03-B@4'	05/02/2024	4	1.13	67.3	0.217	<0.30	4.55	7.18	3.79	<0.236	0.0306	16.5
PWV03-S@2.5'	05/02/2024	2.5	1.07	56.3	0.209	<0.30	3.88	5.68	3.42	<0.260	0.0250	15.6
SEP01-DL@3'	05/02/2024	3	1.21	66.5	<0.200	<0.30	3.79	5.09	3.48	<0.260	<0.0200	14.1
SS01@2'	11/13/2024	2	1.65	52.8	<0.200	<0.30	5.45	5.18	3.66	<0.260	0.0248	22.5
SS02@1'	11/13/2024	1	1.59	52.7	<0.200	<0.30	5.33	5.15	3.52	<0.260	0.0238	21.0
SS03@1'	11/13/2024	1	2.04	74.0	0.209	<0.30	7.69	6.80	4.19	<0.260	0.0302	30.3
SS04@1'	11/13/2024	1	1.61	47.6	<0.200	<0.30	5.05	4.78	3.36	<0.260	0.0212	18.8
SS05@1'	11/13/2024	1	1.98	63.0	0.220	<0.30	7.55	7.22	3.98	<0.260	0.0295	27.3
BKG01@0.5'	1/14/2025	0.5	1.35	69.2	0.277	<0.30	5.19	8.14	4.24	<0.260	0.0335	19.1
BKG01@1'	1/14/2025	1	2.49	81.4	<0.200	<0.30	3.87	6.63	5.27	<0.260	0.0988	18.3
BKG01@2'	1/14/2025	2	2.48	82.2	<0.200	<0.30	3.77	6.40	5.24	<0.260	0.0495	18.8
BKG01@2.5'	1/14/2025	2.5	2.02	70.4	<0.200	<0.30	3.64	5.79	4.66	<0.260	0.0337	16.3
BKG01@4'	1/14/2025	4	1.57	57.9	<0.200	<0.30	2.49	3.51	3.39	<0.260	0.0202	11.7
BKG02@0.5'	1/14/2025	0.5	1.54	70.7	0.277	<0.30	5.51	8.11	4.58	<0.260	0.0341	21.2
BKG02@1'	1/14/2025	1	1.63	73.6	0.244	<0.30	4.92	7.98	4.46	<0.260	0.0337	18.9
BKG02@2'	1/14/2025	2	2.57	92.9	<0.200	<0.30	4.70	6.65	5.95	<0.260	0.0483	18.6
BKG02@2.5'	1/14/2025	2.5	1.65	69.9	<0.200	<0.30	3.08	4.30	4.01	<0.260	0.0266	13.4
BKG02@4'	1/14/2025	4	1.28	83.1	<0.200	<0.30	2.30	3.45	3.23	<0.260	<0.0200	11.2

TABLE 5
SUMMARY OF METALS IN SOIL CHEMISTRY DATA
NOBLE ENERGY, INC (100322)
WOLFE USX CC07-16, WELD COUNTY, COLORADO
REM # 33389

Sample ID	Sample Date	Depth (ft)	Arsenic (mg/kg)	Barium (mg/kg)	Cadmium (mg/kg)	Chromium (VI) ⁽¹⁾ (mg/kg)	Copper (mg/kg)	Lead (mg/kg)	Nickel (mg/kg)	Selenium (mg/kg)	Silver (mg/kg)	Zinc (mg/kg)
ECMC Table 915-1 Limits (Residential SSL)			0.68	15000	71	0.3	3100	400	1500	390	390	23000
ECMC Table 915-1 Limits (Protection of Groundwater SSL)			0.29	82	0.38	0.00067	46	14	26	0.26	0.8	370
BKG03@0.5'	1/14/2025	0.5	1.42	70.6	0.313	<0.30	6.15	8.01	4.50	<0.260	0.0332	21.5
BKG03@1'	1/14/2025	1	1.65	92.5	0.301	<0.30	6.39	8.91	5.10	<0.260	0.0360	22.1
BKG03@2'	1/14/2025	2	1.50	85.5	0.205	<0.30	60.0	9.97	4.77	<0.260	0.0537	52.5
BKG03@2.5'	1/14/2025	2.5	1.34	80.1	<0.200	<0.30	4.33	5.68	4.22	<0.260	0.0269	17.4
BKG03@4'	1/14/2025	4	1.29	56.9	<0.200	<0.30	3.39	4.36	3.53	<0.260	0.0230	14.2
BKG04@0.5'	1/14/2025	0.5	1.35	56.7	0.249	<0.30	4.96	6.99	3.97	<0.260	0.0306	18.7
BKG04@1'	1/14/2025	1	1.41	71.0	0.262	<0.30	4.97	8.05	4.32	<0.260	0.0297	18.1
BKG04@2'	1/14/2025	2	1.20	74.2	<0.200	<0.30	4.16	5.43	4.08	<0.260	0.0246	17.5
BKG04@2.5'	1/14/2025	2.5	1.23	63.1	<0.200	<0.30	3.69	4.75	3.68	<0.260	0.0210	15.2
BKG04@4'	1/14/2025	4	1.56	53.6	<0.200	<0.30	6.03	4.75	3.84	<0.260	0.0360	16.0
BKG05@0.5'	1/14/2025	0.5	2.33	57.1	0.223	<0.30	4.47	6.48	4.19	<0.260	0.0348	18.2
BKG05@1'	1/14/2025	1	2.94	72.3	0.231	<0.30	4.94	6.66	4.50	<0.260	0.0332	17.6
BKG05@2'	1/14/2025	2	1.91	54.7	<0.200	<0.30	3.14	4.15	3.49	<0.260	0.0291	14.0
BKG05@2.5'	1/14/2025	2.5	1.80	50.9	<0.200	<0.30	2.90	4.46	3.23	<0.260	0.0268	13.1
BKG05@4'	1/14/2025	4	3.86	81.0	<0.200	<0.30	4.20	6.90	5.75	<0.260	0.0917	18.5
BKG01@0.5' ⁽²⁾	5/6/2024	0.5	2.19	90.3	0.256	<0.30	5.24	8.73	4.58	<0.260	0.0344	18.7
BKG01@2' ⁽²⁾	5/6/2024	2	2.69	114	0.275	<0.30	5.48	9.59	5.04	<0.260	0.0475	20.9
BKG01@2.5' ⁽²⁾	5/6/2024	2.5	2.21	92.2	0.230	<0.30	4.60	8.00	4.49	<0.234	0.0401	18.5
BKG01@3' ⁽²⁾	5/6/2024	3	2.01	71.7	<0.200	<0.30	4.37	6.35	4.58	<0.260	0.0304	17.1
BKG01@4' ⁽²⁾	5/6/2024	4	1.48	54.1	<0.200	<0.30	3.63	4.77	3.43	<0.260	0.0242	13.8
BKG02@2.5' ⁽²⁾	11/25/2024	2.5	1.58	62.8	<0.200	<0.30	3.47	4.54	3.44	<0.260	<0.0200	15.5
BKG02@3' ⁽²⁾	11/25/2024	3	1.50	57.3	<0.200	<0.30	3.27	4.53	3.31	<0.260	<0.0200	14.2
BKG02@4' ⁽²⁾	11/25/2024	4	1.71	126	0.259	<0.30	4.65	6.10	4.05	<0.260	0.0358	20.9
BKG02@5' ⁽²⁾	11/25/2024	5	1.72	221	0.254	<0.30	3.25	6.25	3.44	<0.260	0.0366	16.9
BH21@5-6' ⁽³⁾	9/9/2024	5-6	2.81	153	0.318	NA	NA	NA	NA	NA	NA	NA
BH21@9-10' ⁽³⁾	9/9/2024	9-10	2.50	122	0.412	NA	NA	NA	NA	NA	NA	NA
BH21@15-16' ⁽³⁾	9/9/2024	15-16	1.77	84.2	<0.200	NA	NA	NA	NA	NA	NA	NA
BH23@5-6' ⁽³⁾	9/12/2024	5-6	1.21	33.2	<0.200	NA	NA	NA	NA	NA	NA	NA
BH23@9-10' ⁽³⁾	9/12/2024	9-10	1.39	29.0	<0.200	NA	NA	NA	NA	NA	NA	NA
BH23@15-16' ⁽³⁾	9/12/2024	15-16	1.18	30.8	<0.200	NA	NA	NA	NA	NA	NA	NA

TABLE 5
SUMMARY OF METALS IN SOIL CHEMISTRY DATA
NOBLE ENERGY, INC (100322)
WOLFE USX CC07-16, WELD COUNTY, COLORADO
REM # 33389

Sample ID	Sample Date	Depth (ft)	Arsenic (mg/kg)	Barium (mg/kg)	Cadmium (mg/kg)	Chromium (VI) ⁽¹⁾ (mg/kg)	Copper (mg/kg)	Lead (mg/kg)	Nickel (mg/kg)	Selenium (mg/kg)	Silver (mg/kg)	Zinc (mg/kg)
ECMC Table 915-1 Limits (Residential SSL)			0.68	15000	71	0.3	3100	400	1500	390	390	23000
ECMC Table 915-1 Limits (Protection of Groundwater SSL)			0.29	82	0.38	0.00067	46	14	26	0.26	0.8	370
Maximum Background Concentration X 1.25			4.83	276	0.515	-	-	-	-	-	-	-

Notes:

1. Compound falls within ECMC Table 915-1 Footnote 9.
2. Samples collected under nearby Wolfe USX CC07-23 Flowline (REM# 33291) project.
3. Samples collected under nearby UPV 13-0214 project (REM# 30786) from native material outside of the influence of oil and gas infrastructure.

Bold faced values exceed the ECMC Table 915-1 limit(s), but are within 1.25x background concentrations.

Red faced values exceed the ECMC Table 915-1 limit(s) and native background concentrations.

Red & blue highlighted soil analytical values indicate an exceedance of the referenced soil screening level (SSL).

ECMC = Energy & Carbon Management Commission

(<) = Analytical result is less than the indicated laboratory reporting limit.

mg/kg = Milligrams per kilogram

ft. = Feet

bgs = Below ground surface

* Indicates laboratory minimum detection limit in excess of SSL

 = Source material characterization sample, excavated and transported off site for disposal.



6855 W. 119th Ave.
Broomfield, CO 80020

CLIENT: Noble	Wolfe USX CC07-16
LOGGED BY: Elizabeth Brauer, Emily Lambert	
PROJECT MANAGER: Bryce Goldade	BORING/WELL ID: BKG01
DRILLING CONTRACTOR: Tasman	
DRILLING EQUIPMENT: Hand Auger	LOCATION: N background
DRILL BIT SIZE (INCHES): 3	LATITUDE (NAD 83): 40.320073
DATE STARTED - COMPLETED: 1/14/25-1/14/25	LONGITUDE (NAD 83): -104.483181
TOTAL WELL DEPTH (FT. BGS): 4	GROUND ELEVATION (FT. AMSL):
DEPTH TO WATER (FT. BGS): Not Encountered	ABANDONMENT METHOD: Native Soil

Depth (feet)	Drill Tooling	% Rec. 25 50 75	Lithologic Description	USCS	PID (ppm)		Lab	Depth (feet)
					100	1000		
0	Hand Auger		Brown, silty sand, fine grain, well sorted, moist, no staining, no odor	SM			Analytical Chemistry Lab	0
			Light brown, clayey sand, fine grain, well sorted, moist, no staining, no odor	SC				
			Tan, silty sand, fine grain, well sorted, moist, no staining, no odor	SM				

Drilling / Sample Method:

- Macro-Core
- Hand Auger
- Expendable Well Tip
- HydroPunch Groundwater Sampler

Laboratory Sample Types:

- Geotechnical Lab
- Analytical Chemistry Lab
- Geotechnical & Analytical Chemistry Lab



6855 W. 119th Ave.
Broomfield, CO 80020

CLIENT: Noble	Wolfe USX CC07-16
LOGGED BY: Elizabeth Brauer, Emily Lambert	
PROJECT MANAGER: Bryce Goldade	BORING/WELL ID: BKG02
DRILLING CONTRACTOR: Tasman	
DRILLING EQUIPMENT: Hand Auger	LOCATION: Mid-east background
DRILL BIT SIZE (INCHES): 3	LATITUDE (NAD 83): 40.320178
DATE STARTED - COMPLETED: 1/14/25-1/14/25	LONGITUDE (NAD 83): -104.482821
TOTAL WELL DEPTH (FT. BGS): 4	GROUND ELEVATION (FT. AMSL):
DEPTH TO WATER (FT. BGS): Not Encountered	ABANDONMENT METHOD: Native Soil

Depth (feet)	Drill Tooling	% Rec. 25 50 75	Lithologic Description	USCS	PID (ppm)		Lab	Depth (feet)
					100	1000		
0	Hand Auger		Brown, silty sand, fine grain, well sorted, moist, no staining, no odor	SM			Analytical Chemistry Lab	0
			Tan, silty sand, fine grain, well sorted, moist, no staining, no odor					

Drilling / Sample Method:

- Macro-Core
- Hand Auger
- Expendable Well Tip
- HydroPunch Groundwater Sampler

Laboratory Sample Types:

- Geotechnical Lab
- Analytical Chemistry Lab
- Geotechnical & Analytical Chemistry Lab



6855 W. 119th Ave.
Broomfield, CO 80020

CLIENT: Noble	Wolfe USX CC07-16
LOGGED BY: Elizabeth Brauer, Emily Lambert	
PROJECT MANAGER: Bryce Goldade	BORING/WELL ID: BKG03
DRILLING CONTRACTOR: Tasman	
DRILLING EQUIPMENT: Hand Auger	LOCATION: E background
DRILL BIT SIZE (INCHES): 3	LATITUDE (NAD 83): 40.319729
DATE STARTED - COMPLETED: 1/14/25-1/14/25	LONGITUDE (NAD 83): -104.483175
TOTAL WELL DEPTH (FT. BGS): 4	GROUND ELEVATION (FT. AMSL):
DEPTH TO WATER (FT. BGS): Not Encountered	ABANDONMENT METHOD: Native Soil

Depth (feet)	Drill Tooling	% Rec.			Lithologic Description	USCS	PID (ppm)		Lab	Depth (feet)
		25	50	75			100	1000		
0	Hand Auger				Brown, silty sand, fine grain, well sorted, moist, no staining, no odor	SM			Analytical Chemistry Lab	0
					Light brown, silty sand, fine grain, well sorted, moist, no staining, no odor					

Drilling / Sample Method:

- Macro-Core
- Hand Auger
- Expendable Well Tip
- HydroPunch Groundwater Sampler

Laboratory Sample Types:

- Geotechnical Lab
- Analytical Chemistry Lab
- Geotechnical & Analytical Chemistry Lab



6855 W. 119th Ave.
Broomfield, CO 80020

CLIENT: Noble	Wolfe USX CC07-16
LOGGED BY: Elizabeth Brauer, Emily Lambert	
PROJECT MANAGER: Bryce Goldade	BORING/WELL ID: BKG04
DRILLING CONTRACTOR: Tasman	
DRILLING EQUIPMENT: Hand Auger	LOCATION: SE background
DRILL BIT SIZE (INCHES): 3	LATITUDE (NAD 83): 40.319728
DATE STARTED - COMPLETED: 1/14/25-1/14/25	LONGITUDE (NAD 83): -104.482793
TOTAL WELL DEPTH (FT. BGS): 4	GROUND ELEVATION (FT. AMSL):
DEPTH TO WATER (FT. BGS): Not Encountered	ABANDONMENT METHOD: Native Soil

Depth (feet)	Drill Tooling	% Rec.			Lithologic Description	USCS	PID (ppm)		Lab	Depth (feet)
		25	50	75			100	1000		
0	Hand Auger				Brown, silty sand, fine grain, well sorted, moist, no staining, no odor	SM			Geotechnical Lab	0
					Tan, silty sand, fine grain, well sorted, dry, no staining, no odor				Analytical Chemistry Lab	

Drilling / Sample Method:

- Macro-Core
- Hand Auger
- Expendable Well Tip
- HydroPunch Groundwater Sampler

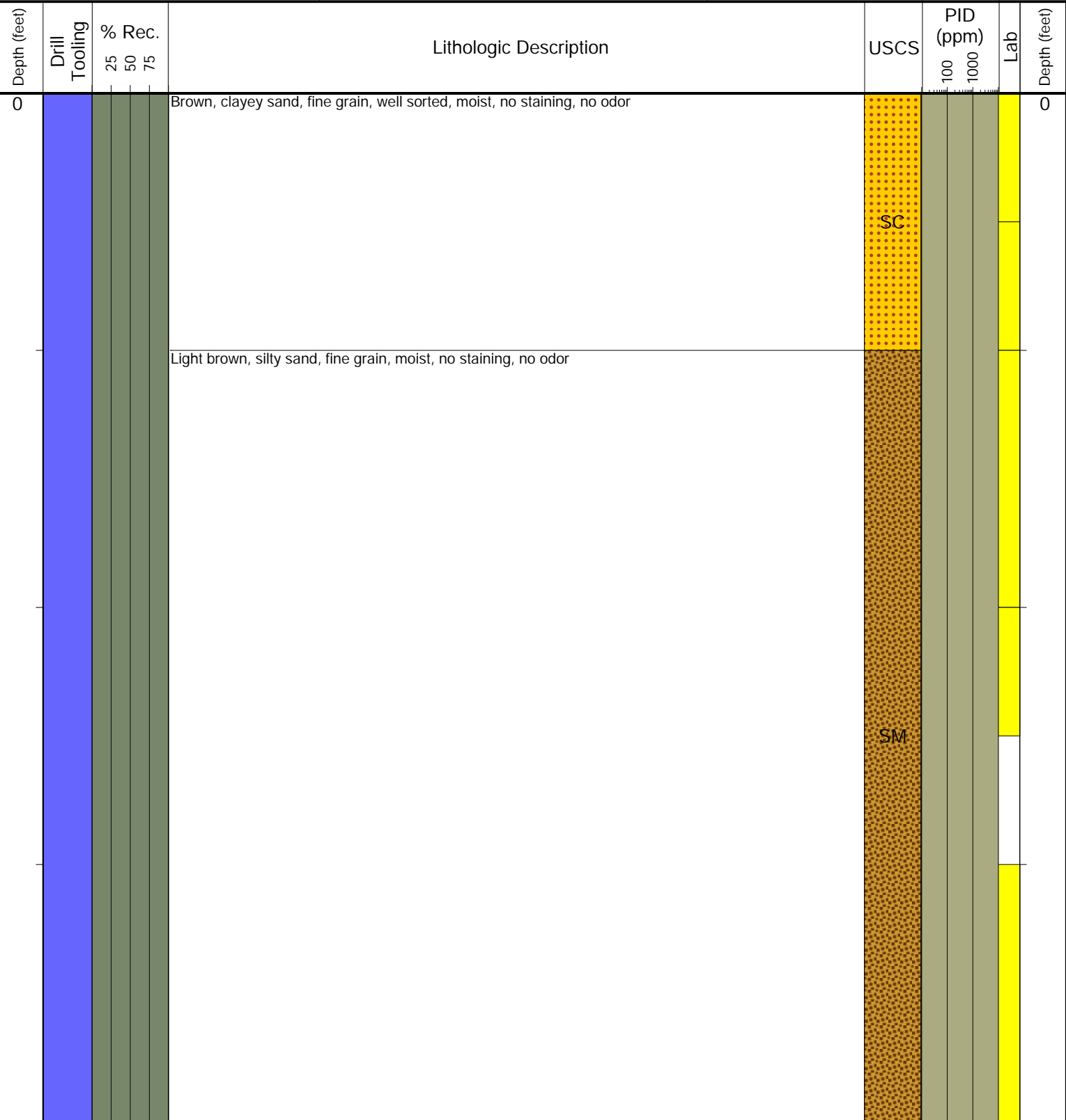
Laboratory Sample Types:

- Geotechnical Lab
- Analytical Chemistry Lab
- Geotechnical & Analytical Chemistry Lab



6855 W. 119th Ave.
Broomfield, CO 80020

CLIENT: Noble	Wolfe USX CC07-16
LOGGED BY: Elizabeth Brauer, Emily Lambert	
PROJECT MANAGER: Bryce Goldade	BORING/WELL ID: BKG05
DRILLING CONTRACTOR: Tasman	
DRILLING EQUIPMENT: Hand Auger	LOCATION: S background
DRILL BIT SIZE (INCHES): 3	LATITUDE (NAD 83): 40.319724
DATE STARTED - COMPLETED: 1/14/25-1/14/25	LONGITUDE (NAD 83): -104.482476
TOTAL WELL DEPTH (FT. BGS): 4	GROUND ELEVATION (FT. AMSL):
DEPTH TO WATER (FT. BGS): Not Encountered	ABANDONMENT METHOD: Native Soil



Drilling / Sample Method:

- Macro-Core
- Hand Auger
- Expendable Well Tip
- HydroPunch Groundwater Sampler

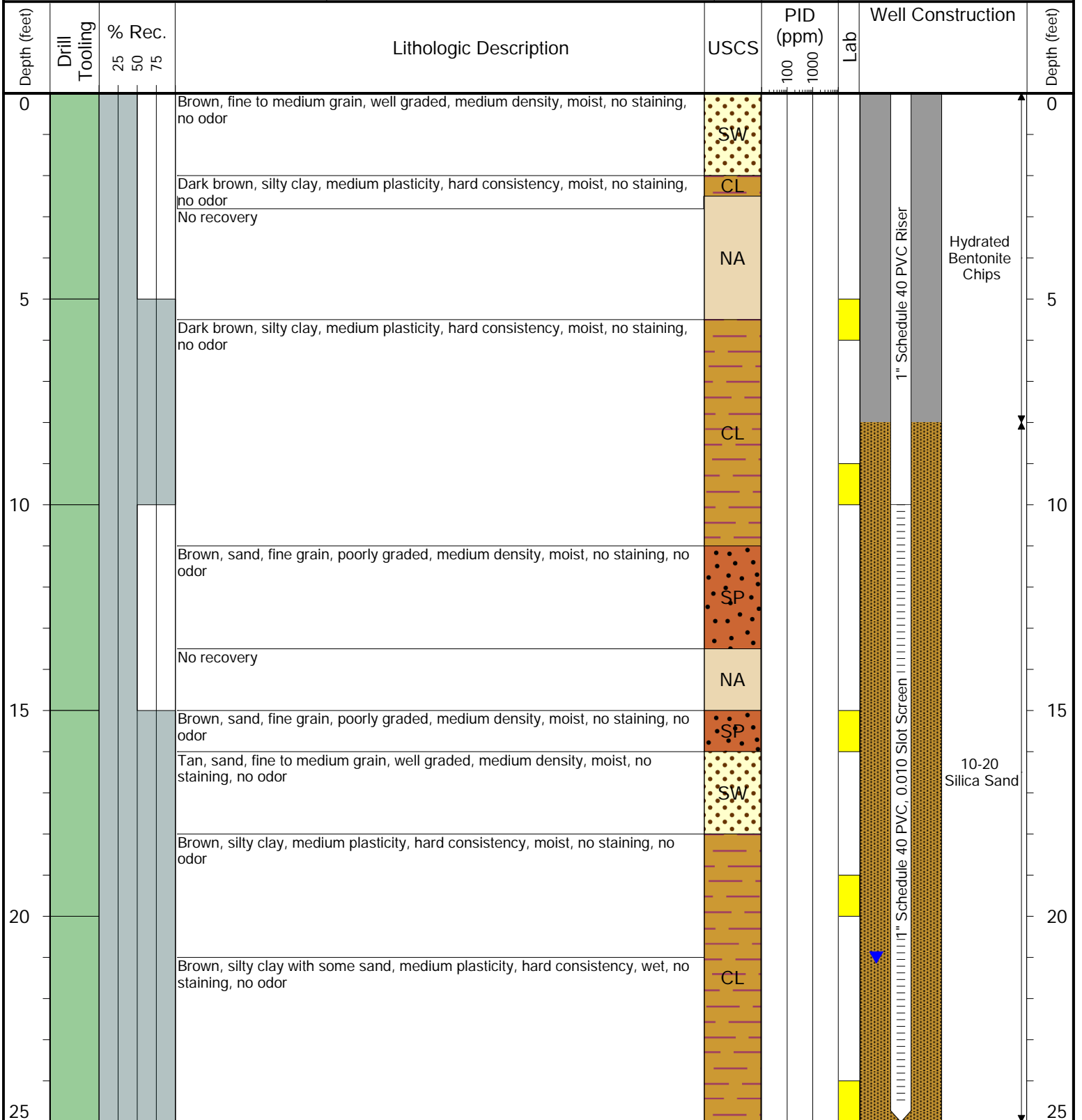
Laboratory Sample Types:

- Geotechnical Lab
- Analytical Chemistry Lab
- Geotechnical & Analytical Chemistry Lab



6855 W. 119th Ave.
Broomfield, CO 80020

CLIENT: Noble	UPV 13-0214 Facility
LOGGED BY: Luke Moran/Deric Bell	
PROJECT MANAGER: Jake Whritenour	BORING / WELL ID: BH21
DRILLING CONTRACTOR: Tasman	
DRILLING EQUIPMENT: Geoprobe	LOCATION: West of BH22
DRILL BIT SIZE (INCHES): 3.25"	LATITUDE (NAD 83): 40.319847
DATE STARTED - COMPLETED: 9/9/2024 - 9/9/2024	LONGITUDE (NAD 83): -104.4969819
TOTAL WELL DEPTH (FT. BGS): 25	CASING ELEVATION (FT. AMSL): 4628.74
DEPTH TO WATER (FT. BGS): 21	GROUND ELEVATION (FT. AMSL): 4628.94



Drilling / Sample Method:

- Macro-Core
- Expendable Well Tip
- Perforated Injection Tool
- Hand Auger

Laboratory Sample Types:

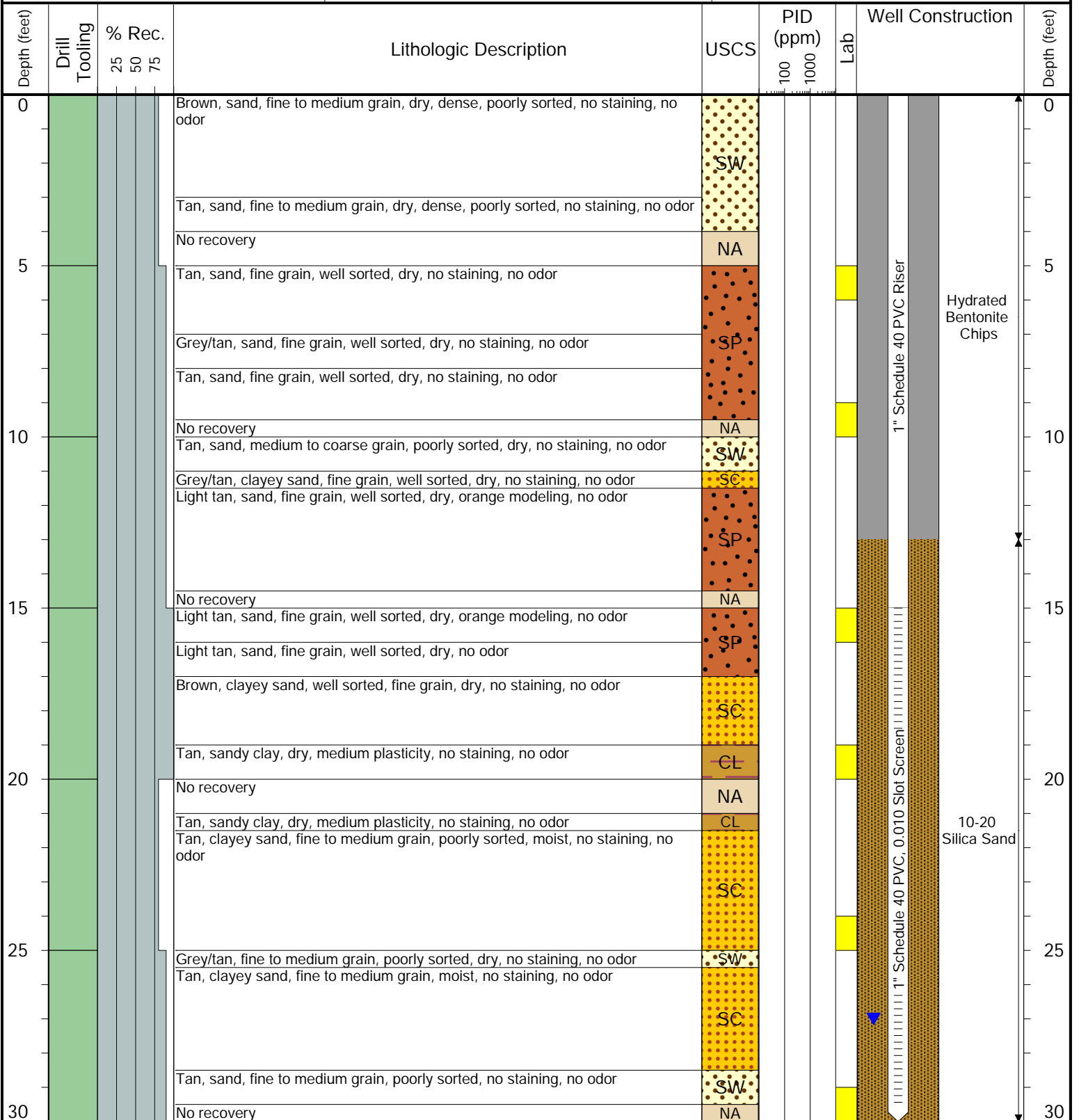
- Geotechnical Lab
- Analytical Chemistry Lab
- Geotechnical & Analytical Chemistry Lab



6855 W. 119th Ave.
Broomfield, CO 80020

CLIENT: Noble
 LOGGED BY: Loren Bohannon/McKenzie Reynolds
 PROJECT MANAGER: Jake Whritenour
 DRILLING CONTRACTOR: Tasman
 DRILLING EQUIPMENT: Geoprobe
 DRILL BIT SIZE (INCHES): 3.25"
 DATE STARTED - COMPLETED: 9/12/2024 - 9/12/2024
 TOTAL WELL DEPTH (FT. BGS): 30
 DEPTH TO WATER (FT. BGS): 27

UPV 13-0214 Facility
 BORING / WELL ID: BH23
 LOCATION: East of BH22
 LATITUDE (NAD 83): 40.319503
 LONGITUDE (NAD 83): -104.4964954
 CASING ELEVATION (FT. AMSL): 4626.51
 GROUND ELEVATION (FT. AMSL): 4626.87



Drilling / Sample Method:
 Macro-Core (Green), Expendable Well Tip (Dark Green), Perforated Injection Tool (Yellow), Hand Auger (Blue)

Laboratory Sample Types:
 Geotechnical Lab (Purple), Geotechnical & Analytical Chemistry Lab (Blue/Yellow), Analytical Chemistry Lab (Yellow)