
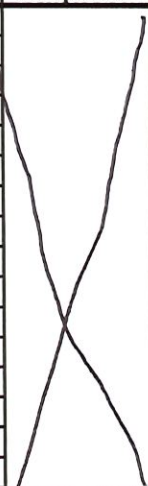
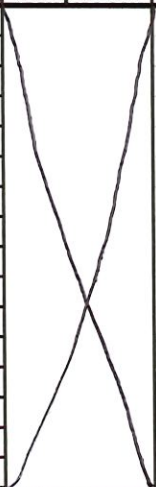


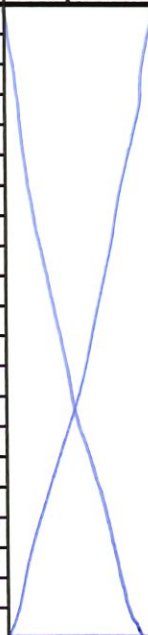
Boring/Well ID #: <i>BH01</i>		SITE NAME: <i>Trice 37-15</i>			CLIENT NAME: <i>Noble</i>				
Date Started: <i>4-14-25</i>		Date Completed:			Relative Location: <i>Source</i>				
Geologist: <i>David Erwin</i>		Project Manager: <i>Andy Sagen</i>			Drilling Company: <i>TASMAN</i>				
Type of Drill: <i>HA</i>		Bit Size: <i>3.25</i>			Surface Completion: <i>native soil</i>				
Screen Interval: <i>-</i>		Riser Interval: <i>-</i>			Well Diameter:				
Sand Interval: <i>-</i>		Bentonite Interval: <i>-</i>			DTW: <i>5</i> TD: <i>8'</i>				
Depth (feet)	Well Completion	Sample Type	% Recovery	PID (ppm)	Laboratory Sample	USCS	Description		
1		<i>HA</i>	<i>100</i>			<i>SC</i>	<i>0-5' Clay-Sand, Brown moist, very fine, low plasticity, no stain, no odor</i>		
2									
3							<i>0.4</i>	<i>BH01 3'-4'</i>	<i>11:30</i>
4									
5							<i>0.1</i>	<i>BH01 5'-6'</i>	<i>12:00</i>
6									
7							<i>1.8</i>	<i>BH01 7'-8'</i>	<i>11:40</i>
8							<i>5-8' same as above only saturated</i>		
9									
10									
11									
12									
13									
14									
15									
16									
17									
18									
19									
20									
21									
22									
23									
24									
25									



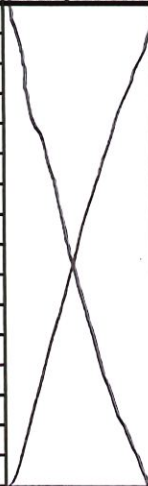
Boring/Well ID #: <b>BH02</b>	SITE NAME: <b>Frico 37-15</b>	CLIENT NAME: <b>Noble</b>
Date Started: <b>4-14-24</b>	Date Completed: <b>4-14-24</b>	Relative Location: <b>North of BH01</b>
Geologist: <b>David Erwin</b>	Project Manager: <b>Andy Sagen</b>	Drilling Company: <b>TASMAN</b>
Type of Drill: <b>HA</b>	Bit Size: <b>3.25</b>	Surface Completion: <b>native soil</b>
Screen Interval: <b>-</b>	Riser Interval: <b>-</b>	Well Diameter: <b>-</b>
Sand Interval: <b>-</b>	Bentonite Interval: <b>-</b>	DTW: <b>5</b> TD: <b>8</b>

Depth (feet)	Well Completion	Sample Type	% Recovery	PID (ppm)	Laboratory Sample	USCS	Description
1		<b>HA</b>	<b>100</b>	<b>1.6</b>	<b>BH02e3'-4'</b> <b>10:30</b>	<b>SL</b>	<b>0-5' Clay-Sand - Brown moist, very fine, low plasticity, no odor, no stain</b>
2							
3							
4							
5							
6							<b>5'-8' Same as above only saturated</b>
7							
8							<b>0.8</b>
9							
10							
11							
12							
13							
14							
15							
16							
17							
18							
19							
20							
21							
22							
23							
24							
25							

Boring/Well ID #: <b>BH03</b>		SITE NAME: <b>Frico 37-15</b>			CLIENT NAME: <b>Noble</b>		
Date Started: <b>4-14-25</b>		Date Completed: <b>4-14-25</b>			Relative Location: <b>SPOT B#01</b>		
Geologist: <b>David Erwin</b>		Project Manager: <b>Andy Sagen</b>			Drilling Company: <b>Tasman</b>		
Type of Drill: <b>HA</b>		Bit Size: <b>3.25</b>			Surface Completion: <b>native soil</b>		
Screen Interval: <b>-</b>		Riser Interval: <b>-</b>			Well Diameter: <b>-</b>		
Sand Interval: <b>-</b>		Bentonite Interval: <b>-</b>			DTW: <b>5</b> TD: <b>8</b>		
Depth (feet)	Well Completion	Sample Type	% Recovery	PID (ppm)	Laboratory Sample	USCS	Description
1		<b>HA</b>	<b>100%</b>				<b>SC</b> 0-5' Clay-Sand, Brown very fine, Low plasticity no odor in situ
2							
3							
4							
5							
6							
7							
8							
9							
10							
11							
12							
13							
14							
15							
16							
17							
18							
19							
20							
21							
22							
23							
24							
25							

Boring/Well ID #: <b>BH04</b>		SITE NAME: <b>Frico 37-15</b>			CLIENT NAME: <b>Noble</b>								
Date Started: <b>4-14-25</b>		Date Completed:			Relative Location: <b>20' SW of 0101</b>								
Geologist: <b>David Erwin</b>		Project Manager: <b>Andy Sagen</b>			Drilling Company: <b>Tasman</b>								
Type of Drill: <b>HA</b>		Bit Size: <b>3.25</b>			Surface Completion: <b>N/A</b>								
Screen Interval: <b>-</b>		Riser Interval: <b>-</b>			Well Diameter:								
Sand Interval: <b>-</b>		Bentonite Interval: <b>-</b>			DTW: <b>5</b> , TD: <b>8</b>								
Depth (feet)	Well Completion	Sample Type	% Recovery	PID (ppm)	Laboratory Sample	USCS	Description						
1		<b>HA</b>	<b>100%</b>			<b>SC</b>	0-5' Clay-Sand Brown. Moist. Low plasticity, no odor no stain.						
2													
3											<b>BH04 3-4'</b>		
4											<b>11:10</b>		
5											<b>BH04 5-6'</b>		5-10' Clay-Sand Brown. Saturated red. Low plasticity, no odor no stain.
6											<b>11:20</b>		
7										<b>3.7</b>	<b>BH04 7-8'</b>		<del>Clay Sand</del> Clay-Sand: Brown. Saturated, staining odor
8											<b>12:35</b>		
9										<b>4.3</b>	<b>BH04 9-10'</b>		"
10											<b>1:15</b>		
11										<b>0.1</b>	<b>BH04 10.5'</b>		<b>CL0</b> - 10.5' Clay, Tan, high plasticity moist no odor, no stain
12					<b>1:20</b>								
13													
14													
15													
16													
17													
18													
19													
20													
21													
22													
23													
24													
25													

Boring/Well ID #: <b>BH05</b>	SITE NAME: <b>Frico 37-15</b>	CLIENT NAME: <b>Noble</b>
Date Started: <b>4-14-25</b>	Date Completed: <b>4-14-25</b>	Relative Location: <b>NE of Source</b>
Geologist: <b>David Erwin</b>	Project Manager: <b>Andy Sagen</b>	Drilling Company: <b>Tasman</b>
Type of Drill: <b>HA</b>	Bit Size: <b>3.25</b>	Surface Completion: <b>Nativesai</b>
Screen Interval: <b>-</b>	Riser Interval: <b>-</b>	Well Diameter: <b>-</b>
Sand Interval: <b>-</b>	Bentonite Interval: <b>-</b>	DTW: <b>5</b> TD: <b>8</b>

Depth (feet)	Well Completion	Sample Type	% Recovery	PID (ppm)	Laboratory Sample	USCS	Description	
1								
2								
3					1.8	BH05 3'-4' 10:45	SC	0.5' Clay-Sand, Brown moist, very fine, low plasticity, no odor no streak
4								
5			HA	100	1.7	BH05 5'-6' 10:50		5'-6' same as above saturated
6								
7					1.3	BH05 7'-8'	SC	7'-8' - Clay-Sand, Brown organic odor, saturated organic stain
8								
9								
10								
11								
12								
13								
14								
15								
16								
17								
18								
19								
20								
21								
22								
23								
24								
25								

# Chevron Rockies Business Unit

## Field Qualitative Criteria for ECMC Reporting Associated with the Discovery of Potentially Impacted Material

If answered **Yes** to any of the questions listed below, this may suggest the presence of potentially impacted materials as outlined in ECMC Rule 912. Out of an abundance of caution, a “Yes” response will be reported to the ECMC within 24 hours after discovery, regardless of laboratory results. **Immediately notify the RBU Remediation Team.** Include a copy of this Field Qualitative Spill Criteria Checklist in the field Report.

Please answer the following questions when on-site:

1. Is there visible petroleum hydrocarbon staining in the soil? Yes\_\_\_\_\_
2. Does the soil sample from the stained area have a petroleum odor? Yes\_\_\_\_\_
3. Is there a petroleum hydrocarbon sheen on the nearby surface water? No\_\_\_\_\_
4. Does there appear to be a sheen of the surface of accumulated groundwater or seeps within the excavation indicative of petroleum? No\_\_\_\_\_
5. Is stained soil in contact with groundwater? No\_\_\_\_\_

Please Include relevant photos of the site conditions for items 1-5.

Location name: Frico 37-15

Please Circle Facility Type: Wellhead

**TABLE 1**  
**FIELD DATA SUMMARY TABLE**  
**NOBLE ENERGY, INC. 100322**  
**FRICO 37-15, WELD COUNTY, COLORADO**  
**REM # 37343**

Sample ID	Sample Date	Depth (ft. bgs)	GPS Data Latitude/Longitude		PDOP Value	VOC Concentration (ppm)
BH01@3-4'	4/14/2025	3-4	40.219303	-104.655135	NC	0.4
BH01@5-6'	4/14/2025	5-6	40.219303	-104.655135	NC	0.1
BH01@7-8'	4/14/2025	7-8	40.219303	-104.655135	NC	1.8
BH02@3-4'	4/14/2025	3-4	40.219353	-104.655134	NC	1.6
BH02@5-6'	4/14/2025	5-6	40.219353	-104.655134	NC	0.7
BH02@7-8'	4/14/2025	7-8	40.219353	-104.655134	NC	0.8
BH03@3-4'	4/14/2025	3-4	40.219303	-104.655068	NC	1.9
BH03@5-6'	4/14/2025	5-6	40.219303	-104.655068	NC	1.4
BH03@7-8'	4/14/2025	7-8	40.219303	-104.655068	NC	1.2
BH04@3-4'	4/14/2025	3-4	40.219253	-104.655135	NC	NC
BH04@5-6'	4/14/2025	5-6	40.219253	-104.655135	NC	NC
BH04@7-8'	4/14/2025	7-8	40.219253	-104.655135	NC	3.7
BH04@9-10'	4/14/2025	9-10	40.219253	-104.655135	NC	4.3
BH04@10.5'	4/14/2025	10.5	40.219253	-104.655135	NC	0.1
BH05@3-4'	4/14/2025	3-4	40.219303	-104.655200	NC	1.8
BH05@5-6'	4/14/2025	5-6	40.219303	-104.655200	NC	1.7
BH05@7-8'	4/14/2025	7-8	40.219303	-104.655200	NC	1.3

**Notes:**

1. Global Positioning System (GPS) data is provided in decimal degrees using North American Datum (NAD) 83 UTM Zone 13 North.

2. Volatile organic compound (VOC) concentrations are measured in the field using a photoionization detector (PID).

PDOP = Position Dilution of Precision

ppm = Parts per million

ft. = Feet

bgs = Below ground surface

NA = Not Applicable

NC = Data not collected

TABLE 2  
SUMMARY OF VOLATILE ORGANIC SOIL CHEMISTRY DATA  
NOBLE ENERGY, INC. 100322  
FRICO 37-15, WELD COUNTY, COLORADO  
REM # 37343

Sample ID	Sample Date	Depth (ft. bgs)	Benzene (mg/kg)	Toluene (mg/kg)	Ethyl-Benzene (mg/kg)	Xylenes (mg/kg)	1,2,4-Trimethyl-Benzene (mg/kg)	1,3,5-Trimethyl-Benzene (mg/kg)	Naphthalene (mg/kg)	TPH (mg/kg)	TPH GRO (mg/kg)	TPH DRO (mg/kg)	TPH ORO (mg/kg)
ECMC Table 915-1 Limits (Residential SSL)			1.2	490	5.8	58	30	27	2	500	500**		
ECMC Table 915-1 Limits (Protection of Groundwater SSL)			0.0026	0.69	0.78	9.9	0.0081	0.0087	0.0038	500	500**		
BH01@3-4'	4/14/2025	3-4	RP	RP	RP	RP	RP	RP	RP	RP	RP	RP	RP
BH01@5-6'	4/14/2025	5-6	RP	RP	RP	RP	RP	RP	RP	RP	RP	RP	RP
BH01@7-8'	4/14/2025	7-8	RP	RP	RP	RP	RP	RP	RP	RP	RP	RP	RP
BH02@3-4'	4/14/2025	3-4	RP	RP	RP	RP	RP	RP	RP	RP	RP	RP	RP
BH02@5-6'	4/14/2025	5-6	RP	RP	RP	RP	RP	RP	RP	RP	RP	RP	RP
BH02@7-8'	4/14/2025	7-8	RP	RP	RP	RP	RP	RP	RP	RP	RP	RP	RP
BH03@3-4'	4/14/2025	3-4	RP	RP	RP	RP	RP	RP	RP	RP	RP	RP	RP
BH03@5-6'	4/14/2025	5-6	RP	RP	RP	RP	RP	RP	RP	RP	RP	RP	RP
BH03@7-8'	4/14/2025	7-8	RP	RP	RP	RP	RP	RP	RP	RP	RP	RP	RP
BH04@3-4'	4/14/2025	3-4	RP	RP	RP	RP	RP	RP	RP	RP	RP	RP	RP
BH04@5-6'	4/14/2025	5-6	RP	RP	RP	RP	RP	RP	RP	RP	RP	RP	RP
BH04@7-8'	4/14/2025	7-8	RP	RP	RP	RP	RP	RP	RP	RP	RP	RP	RP
BH04@9-10'	4/14/2025	9-10	<0.0020	<0.0050	<0.0050	<0.010	<0.0050	<0.0050	<0.0038	<50	<0.50**	<50**	<50
BH04@10.5'	4/14/2025	10.5	RP	RP	RP	RP	RP	RP	RP	RP	RP	RP	RP
BH05@3-4'	4/14/2025	3-4	RP	RP	RP	RP	RP	RP	RP	RP	RP	RP	RP
BH05@5-6'	4/14/2025	5-6	RP	RP	RP	RP	RP	RP	RP	RP	RP	RP	RP
BH05@7-8'	4/14/2025	7-8	RP	RP	RP	RP	RP	RP	RP	RP	RP	RP	RP

**Notes:**

- \* Indicates laboratory minimum detection limit in excess of SSL.
  - \*\* Summation of GRO+DRO+ORO must be less than 500 mg/kg.
- ECMC = Energy & Carbon Management Commission  
(<) = Analytical result is less than the indicated laboratory reporting limit.  
TPH-GRO = Total petroleum hydrocarbons - gasoline range organics  
TPH-DRO = Total petroleum hydrocarbons - diesel range organics  
TPH-ORO = Total petroleum hydrocarbons - oil range organics  
mg/kg = Milligrams per kilogram  
ft. = Feet  
bgs = Below ground surface

TABLE 3  
SUMMARY OF POLYCYCLIC AROMATIC HYDROCARBON SOIL CHEMISTRY DATA  
NOBLE ENERGY, INC. 100322  
FRICO 37-15, WELD COUNTY, COLORADO  
REM # 37343

Sample ID	Sample Date	Depth (ft. bgs)	Acenaphthene (mg/kg)	Anthracene (mg/kg)	Benzo (a) Anthracene (mg/kg)	Benzo (a) Pyrene (mg/kg)	Benzo (b) Fluoranthene (mg/kg)	Benzo (k) Fluoranthene (mg/kg)	Chrysene (mg/kg)	Dibenzo (a,h) Anthracene (mg/kg)	Fluoranthene (mg/kg)	Fluorene (mg/kg)	Indeno (1,2,3-cd) Pyrene (mg/kg)	Pyrene (mg/kg)	1-Methyl - Naphthalene (mg/kg)	2-Methyl- Naphthalene (mg/kg)
ECMC Table 915-1 Limits (Residential SSL)			360	1,800	1.1	0.11	1.1	11	110	0.11	240	240	1.1	180	18	24
ECMC Table 915-1 Limits (Protection of Groundwater SSL)			0.55	5.8	0.011	0.24	0.3	2.9	9	0.096	8.9	0.54	0.98	1.3	0.006	0.019
BH01@3-4'	4/14/2025	3-4	RP	RP	RP	RP	RP	RP	RP	RP	RP	RP	RP	RP	RP	RP
BH01@5-6'	4/14/2025	5-6	RP	RP	RP	RP	RP	RP	RP	RP	RP	RP	RP	RP	RP	RP
BH01@7-8'	4/14/2025	7-8	RP	RP	RP	RP	RP	RP	RP	RP	RP	RP	RP	RP	RP	RP
BH02@3-4'	4/14/2025	3-4	RP	RP	RP	RP	RP	RP	RP	RP	RP	RP	RP	RP	RP	RP
BH02@5-6'	4/14/2025	5-6	RP	RP	RP	RP	RP	RP	RP	RP	RP	RP	RP	RP	RP	RP
BH02@7-8'	4/14/2025	7-8	RP	RP	RP	RP	RP	RP	RP	RP	RP	RP	RP	RP	RP	RP
BH03@3-4'	4/14/2025	3-4	RP	RP	RP	RP	RP	RP	RP	RP	RP	RP	RP	RP	RP	RP
BH03@5-6'	4/14/2025	5-6	RP	RP	RP	RP	RP	RP	RP	RP	RP	RP	RP	RP	RP	RP
BH03@7-8'	4/14/2025	7-8	RP	RP	RP	RP	RP	RP	RP	RP	RP	RP	RP	RP	RP	RP
BH04@3-4'	4/14/2025	3-4	RP	RP	RP	RP	RP	RP	RP	RP	RP	RP	RP	RP	RP	RP
BH04@5-6'	4/14/2025	5-6	RP	RP	RP	RP	RP	RP	RP	RP	RP	RP	RP	RP	RP	RP
BH04@7-8'	4/14/2025	7-8	RP	RP	RP	RP	RP	RP	RP	RP	RP	RP	RP	RP	RP	RP
BH04@9-10'	4/14/2025	9-10	RP	RP	RP	RP	RP	RP	RP	RP	RP	RP	RP	RP	RP	RP
BH04@10.5'	4/14/2025	10.5	RP	RP	RP	RP	RP	RP	RP	RP	RP	RP	RP	RP	RP	RP
BH05@3-4'	4/14/2025	3-4	RP	RP	RP	RP	RP	RP	RP	RP	RP	RP	RP	RP	RP	RP
BH05@5-6'	4/14/2025	5-6	RP	RP	RP	RP	RP	RP	RP	RP	RP	RP	RP	RP	RP	RP
BH05@7-8'	4/14/2025	7-8	RP	RP	RP	RP	RP	RP	RP	RP	RP	RP	RP	RP	RP	RP

**Notes:**

- 1. \* Indicates laboratory minimum detection limit in excess of SSL.
- ECMC = Colorado Energy & Carbon Management Commission
- (<) = Analytical result is less than the indicated laboratory reporting limit.
- ft. = Feet
- bgs = Below ground surface
- mg/kg = Milligrams per kilogram

**TABLE 4**  
**SUMMARY OF SOIL SUITABILITY FOR RECLAMATION**  
**NOBLE ENERGY, INC. 100322**  
**FRICO 37-15, WELD COUNTY, COLORADO**  
**REM # 37343**

Sample ID	Sample Date	Depth (ft. bgs)	pH (Standard Units)	EC (mmhos/cm)	SAR (Standard Units)	Boron (mg/L)
ECMC Table 915-1 Soil Suitability Limits			6 - 8.3	<4	<6	2
BH01@3-4'	4/14/2025	3-4	RP	RP	RP	RP
BH01@5-6'	4/14/2025	5-6	RP	RP	RP	RP
BH01@7-8'	4/14/2025	7-8	RP	RP	RP	RP
BH02@3-4'	4/14/2025	3-4	RP	RP	RP	RP
BH02@5-6'	4/14/2025	5-6	RP	RP	RP	RP
BH02@7-8'	4/14/2025	7-8	RP	RP	RP	RP
BH03@3-4'	4/14/2025	3-4	RP	RP	RP	RP
BH03@5-6'	4/14/2025	5-6	RP	RP	RP	RP
BH03@7-8'	4/14/2025	7-8	RP	RP	RP	RP
BH04@3-4'	4/14/2025	3-4	RP	RP	RP	RP
BH04@5-6'	4/14/2025	5-6	RP	RP	RP	RP
BH04@7-8'	4/14/2025	7-8	RP	RP	RP	RP
BH04@9-10'	4/14/2025	9-10	RP	RP	RP	RP
BH04@10.5'	4/14/2025	10.5	RP	RP	RP	RP
BH05@3-4'	4/14/2025	3-4	RP	RP	RP	RP
BH05@5-6'	4/14/2025	5-6	RP	RP	RP	RP
BH05@7-8'	4/14/2025	7-8	RP	RP	RP	RP

**Notes:**

1. Brown highlighted soil analytical values indicate a regulatory exceedance.
- ECMC = Colorado Energy & Carbon Management Commission  
EC = Electrical conductivity  
SAR = Sodium adsorption ratio  
mmhos/cm = millimhos per centimeter  
mg/L = milligram per liter  
(<) = Analytical result is less than the indicated laboratory reporting limit.  
ft. = Feet  
bgs = Below ground surface

TABLE 5  
SUMMARY OF METALS IN SOIL CHEMISTRY DATA  
NOBLE ENERGY, INC. 100322  
FRICO 37-15, WELD COUNTY, COLORADO  
REM # 37343

Sample ID	Sample Date	Depth (ft. bgs)	Arsenic (mg/kg)	Barium (mg/kg)	Cadmium (mg/kg)	Chromium (VI) <sup>[4]</sup> (mg/kg)	Copper (mg/kg)	Lead (mg/kg)	Nickel (mg/kg)	Selenium (mg/kg)	Silver (mg/kg)	Zinc (mg/kg)
ECMC Table 915-1 Limits (Residential SSL)			0.68	15,000	71	0.3	3,100	400	1,500	390	390	23,000
ECMC Table 915-1 Limits (Protection of Groundwater SSL)			0.29	82	0.38	0.00067	46	14	26	0.26	0.8	370
BH01@3-4'	4/14/2025	3-4	RP	RP	RP	RP	RP	RP	RP	RP	RP	RP
BH01@5-6'	4/14/2025	5-6	RP	RP	RP	RP	RP	RP	RP	RP	RP	RP
BH01@7-8'	4/14/2025	7-8	RP	RP	RP	RP	RP	RP	RP	RP	RP	RP
BH02@3-4'	4/14/2025	3-4	RP	RP	RP	RP	RP	RP	RP	RP	RP	RP
BH02@5-6'	4/14/2025	5-6	RP	RP	RP	RP	RP	RP	RP	RP	RP	RP
BH02@7-8'	4/14/2025	7-8	RP	RP	RP	RP	RP	RP	RP	RP	RP	RP
BH03@3-4'	4/14/2025	3-4	RP	RP	RP	RP	RP	RP	RP	RP	RP	RP
BH03@5-6'	4/14/2025	5-6	RP	RP	RP	RP	RP	RP	RP	RP	RP	RP
BH03@7-8'	4/14/2025	7-8	RP	RP	RP	RP	RP	RP	RP	RP	RP	RP
BH04@3-4'	4/14/2025	3-4	RP	RP	RP	RP	RP	RP	RP	RP	RP	RP
BH04@5-6'	4/14/2025	5-6	RP	RP	RP	RP	RP	RP	RP	RP	RP	RP
BH04@7-8'	4/14/2025	7-8	RP	RP	RP	RP	RP	RP	RP	RP	RP	RP
BH04@9-10'	4/14/2025	9-10	RP	RP	RP	RP	RP	RP	RP	RP	RP	RP
BH04@10.5'	4/14/2025	10.5	RP	RP	RP	RP	RP	RP	RP	RP	RP	RP
BH05@3-4'	4/14/2025	3-4	RP	RP	RP	RP	RP	RP	RP	RP	RP	RP
BH05@5-6'	4/14/2025	5-6	RP	RP	RP	RP	RP	RP	RP	RP	RP	RP
BH05@7-8'	4/14/2025	7-8	RP	RP	RP	RP	RP	RP	RP	RP	RP	RP

**Notes:**

1. Red & blue highlighted soil analytical values indicate an exceedance of the referenced soil screening level (SSL).
2. Compound falls within ECMC Table 915-1 Footnote 9.
3. Non-detect background results accounted for in the highest background concentration by using the reporting limit.

ECMC = Energy & Carbon Management Commission

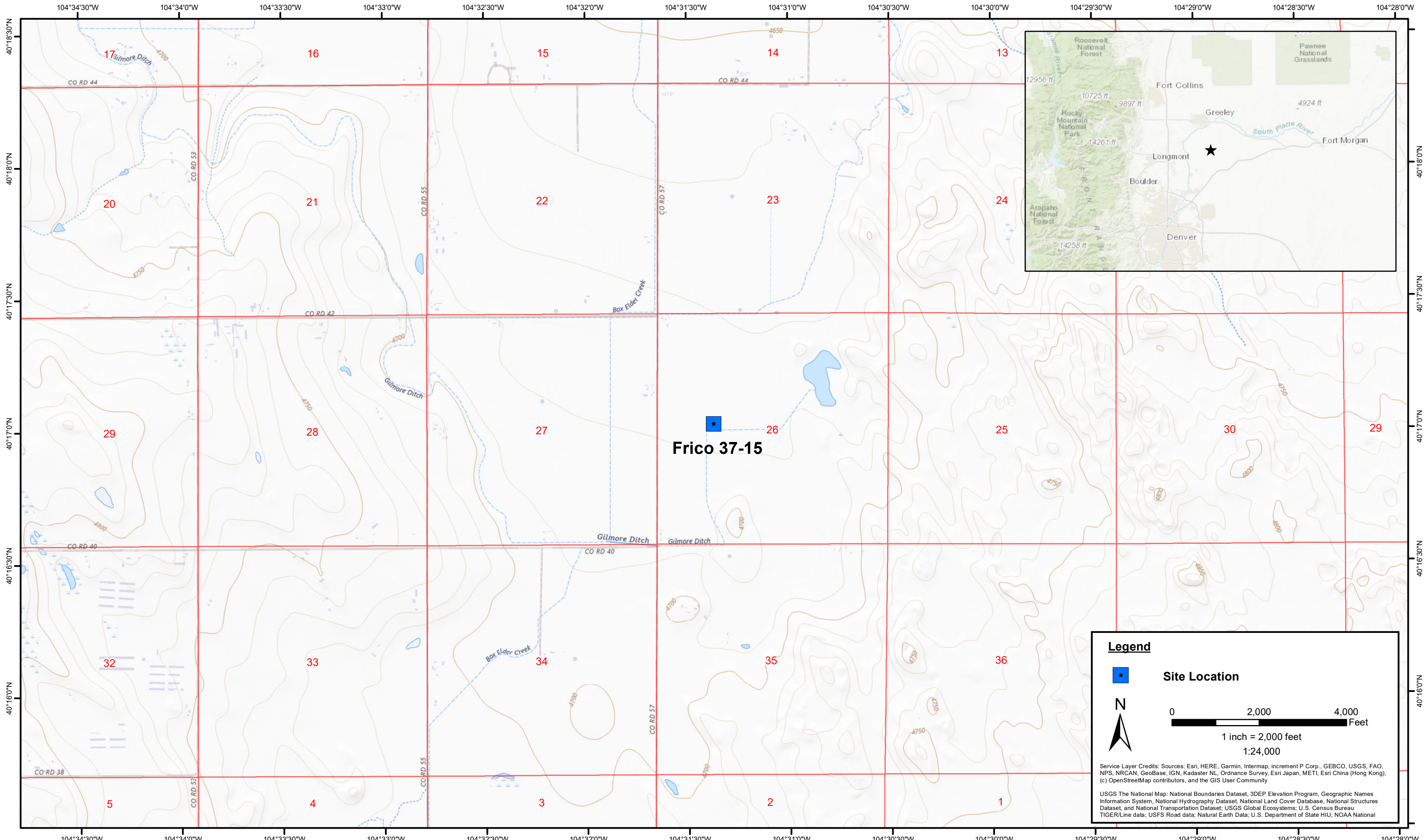
(<) = Analytical result is less than the indicated laboratory reporting limit.

mg/kg = Milligrams per kilogram

ft. = Feet

bgs = Below ground surface

\* Indicates laboratory minimum detection limit in excess of SSL



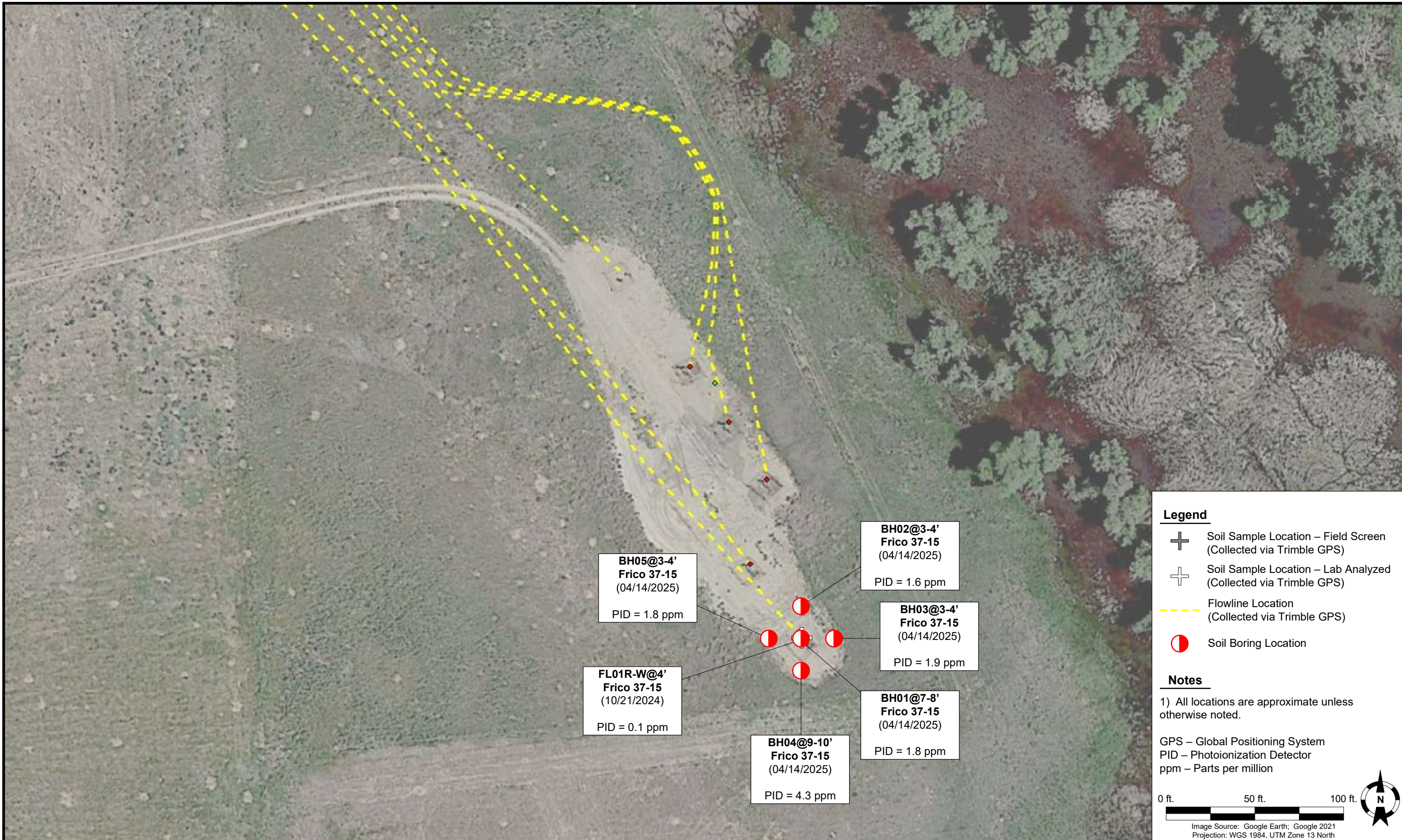
DATE:	April 2025
DESIGNED BY:	B. Nelson
DRAWN BY:	J. Woffinden



**Noble Energy, Inc. – 100322 – DJ Basin**  
**Frico 37-15**  
 SWSW, Section 15, Township 3 North, Range 65 West  
 Weld County, Colorado

Site Location Map

**Figure**  
**1**



**Legend**

- Soil Sample Location – Field Screen (Collected via Trimble GPS)
- Soil Sample Location – Lab Analyzed (Collected via Trimble GPS)
- Flowline Location (Collected via Trimble GPS)
- Soil Boring Location

**Notes**

1) All locations are approximate unless otherwise noted.

GPS – Global Positioning System  
PID – Photoionization Detector  
ppm – Parts per million

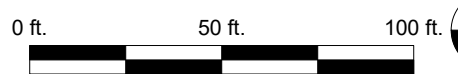


Image Source: Google Earth; Google 2021  
Projection: WGS 1984, UTM Zone 13 North

DATE:	April 15, 2025
DESIGNED BY:	J. Whritenour
DRAWN BY:	L. Reed



**TASMAN** Tasman, Inc.  
6855 W 119<sup>th</sup> Avenue  
Broomfield, CO 80020

**Noble Energy, Inc. – 100322 – DJ Basin**  
**Frico 37-15**  
SWSW, Section 15, Township 3 North, Range 65 West  
Weld County, Colorado

Soil Boring Analytical  
Results Map  
(04/14/2025)