

TABLE 1
FIELD DATA SUMMARY TABLE
NOBLE 100322
GRIGSBY AC 19-62HN, WELD COUNTY, COLORADO
REM # 35368

Sample ID	Sample Date	Depth (ft)	GPS Data		PDOP Value	VOC Concentration (ppm)
			Latitude	Longitude		
Sep. Cab.	1/31/2024	Grab	40.551837	-104.4707335	-	248.6
SS-01 6 Ft	1/31/2024	6	40.551798	-104.4707534	-	37.7
SS-02 6 Ft	1/31/2024	6	40.551817	-104.4707404	-	1.8
SS-03 6 Ft	1/31/2024	6	40.551815	-104.4707511	-	65.2
SS-04	1/31/2024	Multi	40.551840	-104.4707180	-	NA
SS-05	1/31/2024	Multi	40.551865	-104.4707238	-	NA
SS-06	1/31/2024	Multi	40.551862	-104.4707113	-	1.8
SS-07 6 Ft	1/31/2024	6	40.551846	-104.4706747	-	0.7
SS-08 6.5 Ft	1/31/2024	6.5	40.551862	-104.4706596	-	0.2
SS-09	1/31/2024	Multi	40.551868	-104.4707618	-	80.5
SS-10	1/31/2024	Multi	40.551859	-104.4707483	-	NA
SS-11	1/31/2024	Multi	40.551856	-104.4707664	-	NA
SS-12	1/31/2024	Multi	40.551840	-104.4707928	-	NA
SS-13	1/31/2024	Multi	40.551841	-104.4708310	-	NA
SS-14 6 Ft	1/31/2024	6	40.551850	-104.4708490	-	90.1
SS23 3FT	4/4/2024	3	40.551856	-104.4708647	-	14.2
SS24 6FT	4/4/2024	6	40.551874	-104.4708254	-	3.1
SS25 3FT	4/4/2024	3	40.551879	-104.4707640	-	8.1
SS26 3FT	4/4/2024	3	40.551877	-104.4706800	-	3.8
SS27 6FT	4/4/2024	6	40.551843	-104.4706554	-	5.7
SS28 3FT	4/4/2024	3	40.551810	-104.4706990	-	5.3
SS29 10FT	4/4/2024	10	40.551836	-104.4707114	-	10.3

Sample ID	Sample Date	Depth (ft)	GPS Data		PDOP Value	VOC Concentration (ppm)
			Latitude/Longitude			
SS30 3FT	4/4/2024	3	40.551817	-104.4707767	-	302
SS31 10FT	4/4/2024	10	40.551814	-104.4707769	-	3.2
SS32 10FT	4/4/2024	10	40.551823	-104.4707631	-	NA
SS33 3Ft	4/4/2024	3	40.551820	-104.4708310	-	586
SS34 3FT	4/4/2024	3	40.551827	-104.4708657	-	190
SS35 10FT	4/4/2024	10	40.551853	-104.4708240	-	1.4
SS36 6FT	4/4/2024	6	40.551925	-104.4707974	-	NA
SS37 6FT	4/4/2024	6	40.551924	-104.4707641	-	NA
SS38 6FT	4/4/2024	6	40.551920	-104.4707093	-	NA
SS39 6FT	4/10/2024	6	40.551820	-104.4709034	-	3.4
SS40 6FT	4/10/2024	6	40.551774	-104.4708668	-	NA
SS41 6FT	4/10/2024	6	40.551770	-104.4707873	-	NA
SS42 6FT	4/10/2024	6	40.551806	-104.4706815	-	7.4
SS43 6FT	4/10/2024	6	40.551776	-104.4707231	-	NA
SS44 10FT	4/11/2024	10	40.551794	-104.4708147	-	4.7
SS45 6FT	4/11/2024	6	40.551722	-104.4707744	-	3.4
SS46 6FT	4/11/2024	6	40.551748	-104.4707888	-	NA
SS47 6FT	4/11/2024	6	40.551747	-104.4707394	-	NA
SS48 10FT	4/11/2024	10	40.551748	-104.4707654	-	3.7
B01-10.0	2/21/2025	10	40.5517818	-104.4710534	-	1.4
B02-10.0	2/21/2025	10	40.5517395	-104.4710980	-	0.0
E01-8.0	2/21/2025	8	40.5517706	-104.4710383	-	0.6
E02-8.0	2/21/2025	8	40.5517380	-104.4710728	-	0.5
N01-8.0	2/21/2025	8	40.5517976	-104.4710373	-	1.0
S01-8.0	2/21/2025	8	40.5517224	-104.4711168	-	0.0
W01-8.0	2/21/2025	8	40.5517907	-104.4710732	-	3.3

Sample ID	Sample Date	Depth (ft)	GPS Data		PDOP Value	VOC Concentration (ppm)
			Latitude/Longitude			
W02-8.0	2/21/2025	8	40.5517515	-104.4711101	-	0.0
B01-14.0(2)	4/11/2025	14	40.5517818	-104.4710534	-	0.0
N01-12.0(2)	4/11/2025	12	40.5517976	-104.4710373	-	0.0
W01-12.0(2)	4/11/2025	12	40.5517907	-104.4710732	-	0.0

1. Global Positioning System (GPS) data is provided in decimal degrees using North American Datum (NAD) 83 UTMZone 13 North.

2. Volatile organic compound (VOC) concentrations are measured in the field using a photoionization detector (PID).

PDOP = Position Dilution of Precision

ppm = Parts per million

in. = Inches

ft. = Feet

bgs = Below ground surface

TABLE 2
SUMMARY OF VOLATILE ORGANIC SOIL CHEMISTRY DATA
NOBLE 100322
GRIGSBY AC 19-62HN, WELD COUNTY, COLORADO
REM # 35368

Sample ID	Sample Date	Depth (ft)	Benzene (mg/kg)	Toluene (mg/kg)	Ethyl-Benzene (mg/kg)	Xylenes (mg/kg)	1,2,4-Trimethyl-Benzene (mg/kg)	1,3,5-Trimethyl-Benzene (mg/kg)	Naphthalene (mg/kg)	TPH (mg/kg)	TPH GRO (mg/kg)	TPH DRO (mg/kg)	TPH ORO (mg/kg)
ECMC Table 915-1 Limits (Residential SSL)			1.2	490	5.8	58	30	27	2	500	500**		
ECMC Table 915-1 Limits (Protection of Groundwater SSL)			0.0026	0.69	0.78	9.9	0.0081	0.0087	0.0038	500	500**		
Waste Char.	1/29/2024	Grab	210	500	200	710	270	40	46	43,000	15000	18000	10000
SS-01 6 Ft	1/31/2024	6	0.012	<0.0050	<0.0050	0.016	0.017	0.011	0.0079	<500	0.54	<50	<50
SS-06 6 Ft	1/31/2024	6	<0.002	<0.0050	<0.0050	<0.010	<0.0050	<0.0050	<0.0038	<500	<0.50	<50	<50
SS-07 6 Ft	1/31/2024	6	<0.002	<0.0050	<0.0050	<0.010	<0.0050	<0.0050	<0.0038	<500	<0.50	<50	<50
SS-09 6 Ft	1/31/2024	6	0.016	0.014	<0.0050	0.037	0.018	<0.0050	0.0087	<500	0.52	<50	<50
SS-14 6 Ft	1/31/2024	6	0.0092	0.016	0.015	0.060	0.024	0.012	0.012	<500	0.67	<50	<50
SS-19 4 Ft	2/2/2024	4	<0.002	<0.0050	<0.0050	<0.010	<0.0050	<0.0050	<0.0038	<500	0.89	<50	<50
SS-22 4 Ft	2/2/2024	4	<0.002	<0.0050	<0.0050	<0.010	<0.0050	<0.0050	<0.0038	<500	<0.50	<50	<50
SS-23 6FT	04/04/2024	6	<0.0020	<0.0050	<0.0050	<0.010	<0.0050	<0.0050	<0.0038	<500	<0.50	<50	<50
SS-24 6FT	04/04/2024	6	<0.0020	<0.0050	<0.0050	<0.010	<0.0050	<0.0050	<0.0038	<500	<0.50	<50	<50
SS-25 6FT	04/04/2024	6	<0.0020	<0.0050	<0.0050	<0.010	<0.0050	<0.0050	<0.0038	<500	<0.50	<50	<50
SS-26 6FT	04/04/2024	6	<0.0020	<0.0050	<0.0050	<0.010	<0.0050	<0.0050	<0.0038	<500	<0.50	<50	<50
SS-27 6FT	04/04/2024	6	<0.0020	<0.0050	<0.0050	<0.010	<0.0050	<0.0050	<0.0038	<500	<0.50	<50	<50
SS-28 6FT	04/04/2024	6	<0.0020	<0.0050	<0.0050	<0.010	<0.0050	<0.0050	<0.0038	<500	<0.50	<50	<50
SS-29 10FT	04/04/2024	10	<0.0020	<0.0050	<0.0050	<0.010	<0.0050	<0.0050	<0.0038	<500	<0.50	<50	<50
SS-30 6FT	04/04/2024	6	0.036	0.02	0.03	0.07	0.094	0.02	0.04	<500	3.3	<50	<50
SS-32 10FT	04/04/2024	10	<0.0020	<0.0050	<0.0050	<0.010	<0.0050	<0.0050	<0.0038	<500	<0.50	<50	<50
SS-33 6FT	04/04/2024	6	3.300	0.12	9.50	7.00	17.00	4.70	0.63	9,600	1500	6600	1500
SS-34 6FT	04/04/2024	6	<0.0020	<0.0050	0.02	<0.010	0.057	<0.0050	<0.0038	<500	2.2	230	67
SS-35 10FT	04/04/2024	10	<0.0020	<0.0050	<0.0050	<0.010	<0.0050	<0.0050	<0.0038	<500	<0.50	<50	<50
SS-36 6FT	04/04/2024	6	<0.0020	<0.0050	<0.0050	<0.010	<0.0050	<0.0050	<0.0038	<500	<0.50	<50	<50
SS-37 6FT	04/04/2024	6	<0.0020	<0.0050	<0.0050	<0.010	<0.0050	<0.0050	<0.0038	<500	<0.50	<50	<50
SS-38 6FT	04/04/2024	6	<0.0020	<0.0050	<0.0050	<0.010	<0.0050	<0.0050	<0.0038	<500	<0.50	<50	<50
SS39 6FT	04/10/2024	6	<0.0020	<0.0050	<0.0050	<0.010	<0.0050	<0.0050	<0.0038	<500	<0.50	<50	<50
SS40 6FT	04/10/2024	6	<0.0020	<0.0050	<0.0050	<0.010	<0.0050	<0.0050	<0.0038	<500	<0.50	<50	<50
SS41 6FT	04/10/2024	6	<0.0020	<0.0050	<0.0050	<0.010	<0.0050	<0.0050	<0.0038	<500	<0.50	<50	<50
SS42 6FT	04/10/2024	6	<0.0020	<0.0050	<0.0050	<0.010	<0.0050	<0.0050	<0.0038	<500	<0.50	<50	<50
SS43 6FT	04/10/2024	6	<0.0020	<0.0050	<0.0050	<0.010	<0.0050	<0.0050	<0.0038	<500	<0.50	<50	<50
SS44 6FT	04/11/2024	6	<0.0020	<0.0050	<0.0050	<0.010	<0.0050	<0.0050	<0.0038	<500	<0.50	<50	<50
SS45 6FT	04/11/2024	6	<0.0020	<0.0050	<0.0050	<0.010	<0.0050	<0.0050	<0.0038	<500	<0.50	<50	<50

Sample ID	Sample Date	Depth (ft)	Benzene (mg/kg)	Toluene (mg/kg)	Ethyl-Benzene (mg/kg)	Xylenes (mg/kg)	1,2,4-Trimethyl-Benzene (mg/kg)	1,3,5-Trimethyl-Benzene (mg/kg)	Naphthalene (mg/kg)	TPH (mg/kg)	TPH GRO (mg/kg)	TPH DRO (mg/kg)	TPH ORO (mg/kg)
ECMC Table 915-1 Limits (Residential SSL)			1.2	490	5.8	58	30	27	2	500	500**		
ECMC Table 915-1 Limits (Protection of Groundwater SSL)			0.0026	0.69	0.78	9.9	0.0081	0.0087	0.0038	500	500**		
SS46 6FT	04/11/2024	6	<0.0020	<0.0050	<0.0050	<0.010	<0.0050	<0.0050	<0.0038	<500	<0.50	<50	<50
SS47 6FT	04/11/2024	6	<0.0020	<0.0050	<0.0050	<0.010	<0.0050	<0.0050	<0.0038	<500	<0.50	<50	<50
SS48 10FT	04/11/2024	10	<0.0020	<0.0050	<0.0050	<0.010	<0.0050	<0.0050	<0.0038	<500	<0.50	<50	<50

1. Bold values exceed the ECMC Table 915-1 limit(s)

2. Red & blue highlighted soil analytical values indicate an exceedance of the referenced soil screening level (SSL)

3. * Indicates laboratory minimum detection limit in excess of SSL

4. ** Summation of GRO+DRO+ORO must be less than 500 mg/kg

NA - Not analyzed

 = Source material characterization sample, excavated and transported off site for disposal.

 = Material excavated and transported off site for disposal.

TABLE 3
SUMMARY OF POLYCYCLIC AROMATIC HYDROCARBON SOIL CHEMISTRY DATA
NOBLE 100322
GRIGSBY AC 19-62HN, WELD COUNTY, COLORADO
REM # 35368

Sample ID	Sample Date	Depth (ft)	Acenaphthene (mg/kg)	Anthracene (mg/kg)	Benzo (a) Anthracene (mg/kg)	Benzo (a) Pyrene (mg/kg)	Benzo (b) Fluoranthene (mg/kg)	Benzo (k) Fluoranthene (mg/kg)	Chrysene (mg/kg)	Dibenzo (a,h) Anthracene (mg/kg)	Fluoranthene (mg/kg)	Fluorene (mg/kg)	Indeno (1,2,3-cd) Pyrene (mg/kg)	Pyrene (mg/kg)	1-Methyl - Naphthalene (mg/kg)	2-Methyl- Naphthalene (mg/kg)
ECMC Table 915-1 Limits (Residential SSL)			360	1800	1.1	0.11	1.1	11	110	0.11	240	240	1.1	180	18	24
ECMC Table 915-1 Limits (Protection of Groundwater SSL)			0.55	5.8	0.011	0.24	0.3	2.9	9	0.096	8.9	0.54	0.98	1.3	0.006	0.019
Waste Char.	1/29/2024	Grab	3.990	2.160	2.850	<0.500	<0.500	<0.500	2.69	<0.500	0.904	16.4	<0.500	1.500	195	252
SS-01 6 Ft	1/31/2024	6	<0.00500	<0.00500	<0.00500	<0.00500	<0.00500	<0.00500	<0.00500	<0.00500	<0.00500	<0.00500	<0.00500	<0.00500	<0.00500	<0.00500
SS-06 6 Ft	1/31/2024	6	<0.00500	<0.00500	<0.00500	<0.00500	<0.00500	<0.00500	<0.00500	<0.00500	<0.00500	<0.00500	<0.00500	<0.00500	<0.00500	<0.00500
SS-07 6 Ft	1/31/2024	6	<0.00500	<0.00500	<0.00500	<0.00500	<0.00500	<0.00500	<0.00500	<0.00500	<0.00500	<0.00500	<0.00500	<0.00500	<0.00500	<0.00500
SS-09 6 Ft	1/31/2024	6	<0.00500	<0.00500	<0.00500	<0.00500	<0.00500	<0.00500	<0.00500	<0.00500	<0.00500	<0.00500	<0.00500	<0.00500	<0.00500	<0.00500
SS-14 6 Ft	1/31/2024	6	<0.00500	<0.00500	<0.00500	<0.00500	<0.00500	<0.00500	<0.00500	<0.00500	<0.00500	<0.00500	<0.00500	<0.00500	0.00544	0.00684
SS-19 4 Ft	2/2/2024	4	<0.00500	<0.00500	<0.00500	<0.00500	<0.00500	<0.00500	<0.00500	<0.00500	<0.00500	<0.00500	<0.00500	<0.00500	<0.00500	<0.00500
SS-22 4 Ft	2/2/2024	4	<0.00500	<0.00500	<0.00500	<0.00500	<0.00500	<0.00500	<0.00500	<0.00500	<0.00500	<0.00500	<0.00500	<0.00500	<0.00500	<0.00500
SS-23 6FT	04/04/2024	6	<0.00500	<0.00500	<0.00500	<0.00500	<0.00500	<0.00500	<0.00500	<0.00500	<0.00500	<0.00500	<0.00500	<0.00500	<0.00500	<0.00500
SS-24 6FT	04/04/2024	6	<0.00500	<0.00500	<0.00500	<0.00500	<0.00500	<0.00500	<0.00500	<0.00500	<0.00500	<0.00500	<0.00500	<0.00500	<0.00500	<0.00500
SS-25 6FT	04/04/2024	6	<0.00500	<0.00500	<0.00500	<0.00500	<0.00500	<0.00500	<0.00500	<0.00500	<0.00500	<0.00500	<0.00500	<0.00500	<0.00500	<0.00500
SS-26 6FT	04/04/2024	6	<0.00500	<0.00500	<0.00500	<0.00500	<0.00500	<0.00500	<0.00500	<0.00500	<0.00500	<0.00500	<0.00500	<0.00500	<0.00500	<0.00500
SS-27 6FT	04/04/2024	6	<0.00500	<0.00500	<0.00500	<0.00500	<0.00500	<0.00500	<0.00500	<0.00500	<0.00500	<0.00500	<0.00500	<0.00500	<0.00500	<0.00500
SS-28 6FT	04/04/2024	6	<0.00500	<0.00500	<0.00500	<0.00500	<0.00500	<0.00500	<0.00500	<0.00500	<0.00500	<0.00500	<0.00500	<0.00500	<0.00500	<0.00500
SS-29 10FT	04/04/2024	10	<0.00500	<0.00500	<0.00500	<0.00500	<0.00500	<0.00500	<0.00500	<0.00500	<0.00500	<0.00500	<0.00500	<0.00500	<0.00500	<0.00500
SS-30 6FT	04/04/2024	6	<0.00500	<0.00500	<0.00500	<0.00500	<0.00500	<0.00500	<0.00500	<0.00500	<0.00500	0.00953	<0.00500	<0.00500	0.0279	0.0459
SS-32 10FT	04/04/2024	10	<0.00500	<0.00500	<0.00500	<0.00500	<0.00500	<0.00500	<0.00500	<0.00500	<0.00500	<0.00500	<0.00500	<0.00500	<0.00500	<0.00500
SS-33 6FT	04/04/2024	6	0.210	0.076	0.210	<0.0500	<0.0500	<0.0500	0.101	<0.0500	0.068	1.78	<0.0500	0.062	13.5	14.1
SS-34 6FT	04/04/2024	6	<0.00500	<0.00500	<0.00500	<0.00500	<0.00500	<0.00500	<0.00500	<0.00500	<0.00500	0.0144	<0.00500	<0.00500	0.0522	0.0926
SS-35 10FT	04/04/2024	10	<0.00500	<0.00500	<0.00500	<0.00500	<0.00500	<0.00500	<0.00500	<0.00500	<0.00500	<0.00500	<0.00500	<0.00500	<0.00500	<0.00500
SS-36 6FT	04/04/2024	6	<0.00500	<0.00500	<0.00500	<0.00500	<0.00500	<0.00500	<0.00500	<0.00500	<0.00500	<0.00500	<0.00500	<0.00500	<0.00500	<0.00500
SS-37 6FT	04/04/2024	6	<0.00500	<0.00500	<0.00500	<0.00500	<0.00500	<0.00500	<0.00500	<0.00500	<0.00500	<0.00500	<0.00500	<0.00500	<0.00500	<0.00500
SS-38 6FT	04/04/2024	6	<0.00500	<0.00500	<0.00500	<0.00500	<0.00500	<0.00500	<0.00500	<0.00500	<0.00500	<0.00500	<0.00500	<0.00500	<0.00500	<0.00500
SS39 6FT	04/10/2024	6	<0.00500	<0.00500	<0.00500	<0.00500	<0.00500	<0.00500	<0.00500	<0.00500	<0.00500	<0.00500	<0.00500	<0.00500	<0.00500	<0.00500
SS40 6FT	04/10/2024	6	<0.00500	<0.00500	<0.00500	<0.00500	<0.00500	<0.00500	<0.00500	<0.00500	<0.00500	<0.00500	<0.00500	<0.00500	<0.00500	<0.00500
SS41 6FT	04/10/2024	6	<0.00500	<0.00500	<0.00500	<0.00500	<0.00500	<0.00500	<0.00500	<0.00500	<0.00500	<0.00500	<0.00500	<0.00500	<0.00500	<0.00500
SS42 6FT	04/10/2024	6	<0.00500	<0.00500	<0.00500	<0.00500	<0.00500	<0.00500	<0.00500	<0.00500	<0.00500	<0.00500	<0.00500	<0.00500	<0.00500	<0.00500
SS43 6FT	04/10/2024	6	<0.00500	<0.00500	<0.00500	<0.00500	<0.00500	<0.00500	<0.00500	<0.00500	<0.00500	<0.00500	<0.00500	<0.00500	<0.00500	<0.00500
SS44 6FT	04/11/2024	6	<0.00500	<0.00500	<0.00500	<0.00500	<0.00500	<0.00500	<0.00500	<0.00500	<0.00500	<0.00500	<0.00500	<0.00500	<0.00500	<0.00500
SS45 6FT	04/11/2024	6	<0.00500	<0.00500	<0.00500	<0.00500	<0.00500	<0.00500	<0.00500	<0.00500	<0.00500	<0.00500	<0.00500	<0.00500	<0.00500	<0.00500
SS46 6FT	04/11/2024	6	<0.00500	<0.00500	<0.00500	<0.00500	<0.00500	<0.00500	<0.00500	<0.00500	<0.00500	<0.00500	<0.00500	<0.00500	<0.00500	<0.00500
SS47 6FT	04/11/2024	6	<0.00500	<0.00500	<0.00500	<0.00500	<0.00500	<0.00500	<0.00500	<0.00500	<0.00500	<0.00500	<0.00500	<0.00500	<0.00500	<0.00500
SS48 10FT	04/11/2024	10	<0.00500	<0.00500	<0.00500	<0.00500	<0.00500	<0.00500	<0.00500	<0.00500	<0.00500	<0.00500	<0.00500	<0.00500	<0.00500	<0.00500

1. Bold values exceed the ECMC Table 915-1 limit(s)
2. Red & blue highlighted soil analytical values indicate an exceedance of the referenced soil screening level (SSL)
3. * Indicates laboratory minimum detection limit in excess of SSL

Sample ID	Sample Date	Depth (ft)	Acenaphthene (mg/kg)	Anthracene (mg/kg)	Benzo (a) Anthracene (mg/kg)	Benzo (a) Pyrene (mg/kg)	Benzo (b) Fluoranthene (mg/kg)	Benzo (k) Fluoranthene (mg/kg)	Chrysene (mg/kg)	Dibenzo (a,h) Anthracene (mg/kg)	Fluoranthene (mg/kg)	Fluorene (mg/kg)	Indeno (1,2,3-cd) Pyrene (mg/kg)	Pyrene (mg/kg)	1-Methyl - Naphthalene (mg/kg)	2-Methyl- Naphthalene (mg/kg)
ECMC Table 915-1 Limits (Residential SSL)			360	1800	1.1	0.11	1.1	11	110	0.11	240	240	1.1	180	18	24
ECMC Table 915-1 Limits (Protection of Groundwater SSL)			0.55	5.8	0.011	0.24	0.3	2.9	9	0.096	8.9	0.54	0.98	1.3	0.006	0.019

NA - Not analyzed

= Source material characterization sample, excavated and transported off site for disposal.

= Material excavated and transported off site for disposal.

TABLE 4
SUMMARY OF SOIL SUITABILITY FOR RECLAMATION
NOBLE 100322
GRIGSBY AC 19-62HN, WELD COUNTY, COLORADO
REM # 35368

Sample ID	Sample Date	Depth (ft)	pH (Standard Units)	EC (mmhos/cm)	SAR (Standard Units)	Boron (mg/L)
ECMC Table 915-1 Soil Suitability Limits			6 - 8.3	<4	<6	2
Waste Char.	1/29/2024	Grab	7.71	0.343	1.14	<2.00
SS-01 6 Ft	1/31/2024	6	8.83	1.52	13.4	<2.00
SS-06 6 Ft	1/31/2024	6	8.64	4.62	9.08	<2.00
SS-07 6 Ft	1/31/2024	6	8.79	0.942	7.81	<2.00
SS-09 6 Ft	1/31/2024	6	9.76	1.65	20.8	<2.00
SS-14 6 Ft	1/31/2024	6	8.94	3.52	15.1	<2.00
SS-19 4 Ft	2/2/2024	4	8.23	0.938	5.9	<2.00
SS-22 4 Ft	2/2/2024	4	9.14	1.09	13.5	<2.00
SS-23 6FT	04/04/2024	6	8.36	3.05	31.0	<2.00
SS-24 6FT	04/04/2024	6	8.67	4.73	24.1	<2.00
SS-25 6FT	04/04/2024	6	7.54	2.96	15.7	<2.00
SS-26 6FT	04/04/2024	6	8.99	6.06	11.8	<2.00
SS-27 6FT	04/04/2024	6	8.78	4.01	19.9	<2.00
SS-28 6FT	04/04/2024	6	8.71	4.12	15.0	<2.00
SS-29 10FT	04/04/2024	10	6.87	3.89	17.0	<2.00
SS-30 6FT	04/04/2024	6	8.97	3.22	27.2	<2.00
SS-32 10FT	04/04/2024	10	7.62	5.44	10.8	<2.00
SS-33 6FT	04/04/2024	6	9.03	2.44	22.8	<2.00
SS-34 6FT	04/04/2024	6	8.65	3.79	24.1	<2.00
SS-35 10FT	04/04/2024	10	8.15	4.30	9.72	<2.00
SS-36 6FT	04/04/2024	6	8.01	2.60	4.12	<2.00
SS-37 6FT	04/04/2024	6	8.14	1.76	10.8	<2.00
SS-38 6FT	04/04/2024	6	8.85	1.57	7.96	<2.00
SS39 6FT	04/10/2024	6	8.89	0.187	22.9	<2.00
SS40 6FT	04/10/2024	6	9.11	1.38	20.3	<2.00
SS41 6FT	04/10/2024	6	7.30	1.37	16.2	<2.00
SS42 6FT	04/10/2024	6	8.67	1.16	20.1	<2.00
SS43 6FT	04/10/2024	6	8.44	0.810	16.1	<2.00
SS44 6FT	04/11/2024	6	8.01	1.68	14.9	<2.00
SS45 6FT	04/11/2024	6	8.14	0.332	3.45	<2.00
SS46 6FT	04/11/2024	6	7.97	0.571	9.11	<2.00
SS47 6FT	04/11/2024	6	7.79	0.664	6.86	<2.00

Sample ID	Sample Date	Depth (ft)	pH (Standard Units)	EC (mmhos/cm)	SAR (Standard Units)	Boron (mg/L)
ECMC Table 915-1 Soil Suitability Limits			6 - 8.3	<4	<6	2
SS48 10FT	04/11/2024	10	8.71	0.727	12.1	<2.00
BKG01 3FT	04/10/2024	3	8.00	0.143	1.09	<2.00
BKG01 6FT	04/10/2024	6	8.52	0.161	0.917	<2.00
BKG02 3FT	04/10/2024	3	7.98	8.30	13.1	<2.00
BKG02 6FT	04/10/2024	6	8.70	4.73	14.7	<2.00
BKG03 3FT	04/10/2024	3	7.76	0.256	0.305	<2.00
BKG03 6FT	04/10/2024	6	8.43	0.726	2.06	<2.00
BKG04 3FT	04/10/2024	3	8.11	1.06	6.01	<2.00
BKG04 6FT	04/10/2024	6	7.66	1.25	3.76	<2.00
BKG05 3FT	04/10/2024	3	7.56	4.32	6.41	<2.00
BKG05 6FT	04/10/2024	6	7.79	1.13	4.05	<2.00
			Not resolved	resolved	Not resolved	resolved
Maximum Background Concentration			8.70	8.30	14.7	<2.00

1. Bold faced values exceed the ECMC Table 915-1 limit(s)

2. Blue highlighted soil analytical values indicate a regulatory exceedance

NA - Not analyzed

 = Source material characterization sample, excavated and transported off site for disposal.

 = Material excavated and transported off site for disposal.

TABLE 5
SUMMARY OF METALS IN SOIL CHEMISTRY DATA
NOBLE 100322
GRIGSBY AC 19-62HN, WELD COUNTY, COLORADO
REM # 35368

Sample ID	Sample Date	Depth (ft)	Arsenic (mg/kg)	Barium (mg/kg)	Cadmium (mg/kg)	Chromium (VI) (mg/kg)	Copper (mg/kg)	Lead (mg/kg)	Nickel (mg/kg)	Selenium (mg/kg)	Silver (mg/kg)	Zinc (mg/kg)
ECMC Table 915-1 Limits (Residential SSL)			0.68	15000	71	0.3	3100	400	1500	390	390	23000
ECMC Table 915-1 Limits (Protection of Groundwater SSL)			0.29	82	0.38	0.00067	46	14	26	0.26	0.8	370
Waste Char.	1/29/2024	Grab	1.78	30.5	<0.200	<0.30	3.09	2.97	2.40	<0.260	<0.0200	8.74
SS-01 6 Ft	1/31/2024	6	1.72	17.9	0.246	<0.30	10.1	15.1	5.20	<0.260	0.0509	28.7
SS-06 6 Ft	1/31/2024	6	3.22	10.3	0.231	<0.30	10.1	13.9	5.51	<0.260	0.0412	32.7
SS-07 6 Ft	1/31/2024	6	4.20	13.1	0.261	<0.30	7.39	9.17	7.87	<0.260	0.0345	44.9
SS-09 6 Ft	1/31/2024	6	5.30	23.8	0.328	<0.30	12.0	15.1	8.66	<0.260	0.0521	49.1
SS-14 6 Ft	1/31/2024	6	3.74	19.0	0.276	<0.30	9.33	12.4	7.38	<0.260	0.0437	37.8
SS-19 4 Ft	2/2/2024	4	2.02	13.6	0.205	<0.30	8.89	14	4.17	<0.260	0.0603	24.6
SS-22 4 Ft	2/2/2024	4	5.50	33.7	0.298	<0.30	8.59	14.5	5.26	<0.260	0.0502	28.5
SS-23 6FT	04/04/2024	6	5.62	94.8	0.337	<0.30	20.3	12.5	5.84	<0.260	0.0889	32.2
SS-24 6FT	04/04/2024	6	1.97	112	0.226	<0.30	11.6	9.64	5.12	<0.260	0.0585	31.0
SS-25 6FT	04/04/2024	6	6.36	58.1	0.341	<0.30	18.5	12.8	7.81	<0.260	0.069	42.9
SS-26 6FT	04/04/2024	6	4.32	10.1	0.233	<0.30	8.85	6.55	6.69	<0.260	0.0526	34.0
SS-27 6FT	04/04/2024	6	3.49	9.60	<0.200	<0.30	6.56	6.38	5.96	<0.260	0.0478	31.8
SS-28 6FT	04/04/2024	6	3.46	11.1	<0.200	<0.30	6.20	6.16	6.02	<0.260	0.0425	31.8
SS-29 10FT	04/04/2024	10	1.90	11.7	<0.200	<0.30	3.56	5.35	4.39	<0.260	0.0555	27.2
SS-30 6FT	04/04/2024	6	3.41	71.4	0.250	<0.30	13.6	10.8	6.01	<0.260	0.0684	33.9
SS-32 10FT	04/04/2024	10	2.90	47.4	0.433	<0.30	18.1	15.8	7.98	1.46	0.167	31.6
SS-33 6FT	04/04/2024	6	3.57	17.6	0.335	<0.30	18.3	12.1	5.05	<0.260	0.0845	26.8
SS-34 6FT	04/04/2024	6	2.44	69.1	0.221	<0.30	12.4	9.87	5.12	<0.260	0.0649	26.9
SS-35 10FT	04/04/2024	10	1.61	169	0.284	<0.30	19.5	15.0	5.81	<0.260	0.113	22.7
SS-36 6FT	04/04/2024	6	4.86	108	0.228	<0.30	6.24	6.92	4.04	0.334	0.0505	21.8
SS-37 6FT	04/04/2024	6	1.28	15.6	0.254	<0.30	16.2	13.3	5.05	<0.260	0.0709	21.9
SS-38 6FT	04/04/2024	6	2.72	25.5	0.222	<0.30	15.3	14.2	7.22	<0.260	0.0733	26.5
SS39 6FT	04/10/2024	6	5.15	36.1	0.611	<0.30	26.0	21.5	19.6	<0.260	0.0828	25.9
SS40 6FT	04/10/2024	6	3.88	20.7	0.288	<0.30	7.10	9.61	5.71	<0.236	0.0417	31.7
SS41 6FT	04/10/2024	6	5.47	36.3	0.472	<0.30	7.65	11.0	12.0	<0.260	0.0405	34.4
SS42 6FT	04/10/2024	6	3.32	12.3	0.300	<0.30	6.40	9.94	6.04	<0.260	0.0304	32.8
SS43 6FT	04/10/2024	6	3.39	42.6	0.439	<0.30	8.98	14.2	5.76	<0.260	0.0703	26.1

Sample ID	Sample Date	Depth (ft)	Arsenic (mg/kg)	Barium (mg/kg)	Cadmium (mg/kg)	Chromium (VI) (mg/kg)	Copper (mg/kg)	Lead (mg/kg)	Nickel (mg/kg)	Selenium (mg/kg)	Silver (mg/kg)	Zinc (mg/kg)
ECMC Table 915-1 Limits (Residential SSL)			0.68	15000	71	0.3	3100	400	1500	390	390	23000
ECMC Table 915-1 Limits (Protection of Groundwater SSL)			0.29	82	0.38	0.00067	46	14	26	0.26	0.8	370
SS44 6FT	04/11/2024	6	5.36	52.4	0.437	<0.30	9.97	14.9	4.87	<0.234	0.0645	30.1
SS45 6FT	04/11/2024	6	2.77	28.9	0.269	<0.30	7.95	13.2	5.15	<0.260	0.0465	28.6
SS46 6FT	04/11/2024	6	3.29	10.4	0.206	<0.30	5.03	6.89	7.11	<0.260	0.0260	32.1
SS47 6FT	04/11/2024	6	1.59	15.7	0.263	<0.30	7.22	11.4	4.14	<0.260	0.0536	20.3
SS48 10FT	04/11/2024	10	2.77	17.3	0.247	<0.30	7.05	10.5	4.84	<0.260	0.0469	27.6
BKG01 3FT	04/10/2024	3	4.51	51.0	0.316	<0.30	4.28	8.89	3.94	0.243	0.0303	20.0
BKG01 6FT	04/10/2024	6	3.20	47.3	0.280	<0.30	4.18	8.05	3.42	<0.234	0.0254	17.7
BKG02 3FT	04/10/2024	3	10.5	85.5	0.317	<0.30	5.91	10.9	6.98	0.398	0.0386	20.9
BKG02 6FT	04/10/2024	6	6.48	38.5	0.337	<0.30	5.56	12.0	4.77	0.364	0.0346	23.7
BKG03 3FT	04/10/2024	3	3.28	45.4	0.240	<0.30	4.17	8.08	3.32	<0.260	0.0237	15.5
BKG03 6FT	04/10/2024	6	5.03	148	0.369	<0.30	5.90	10.6	6.88	0.417	0.0518	24.9
BKG04 3FT	04/10/2024	3	4.78	76.6	0.269	<0.30	4.23	7.92	3.87	0.374	0.0263	19.2
BKG04 6FT	04/10/2024	6	7.61	95.4	0.323	<0.30	4.48	8.42	4.85	0.239	0.0278	21.0
BKG05 3FT	04/10/2024	3	2.58	61.5	0.228	<0.30	3.87	7.35	3.55	<0.260	0.0247	16.6
BKG05 6FT	04/10/2024	6	3.20	92.6	0.243	<0.30	4.32	7.60	4.17	0.293	0.0281	19.9
			resolved	resolved	Not resolved	resolved	resolved	Not resolved	resolved	Not resolved	resolved	resolved
Maximum Background Concentration			10.5	148	0.369	<0.30	5.91	12.0	6.98	0.417	0.0518	24.9
125% Maximum Background Concentration			13.13	185	0.461	<0.30	7.39	15.0	8.73	0.521	0.0648	31.1

1. Bold values exceed the ECMC Table 915-1 limit(s)

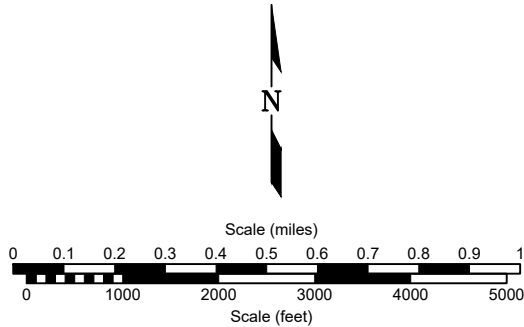
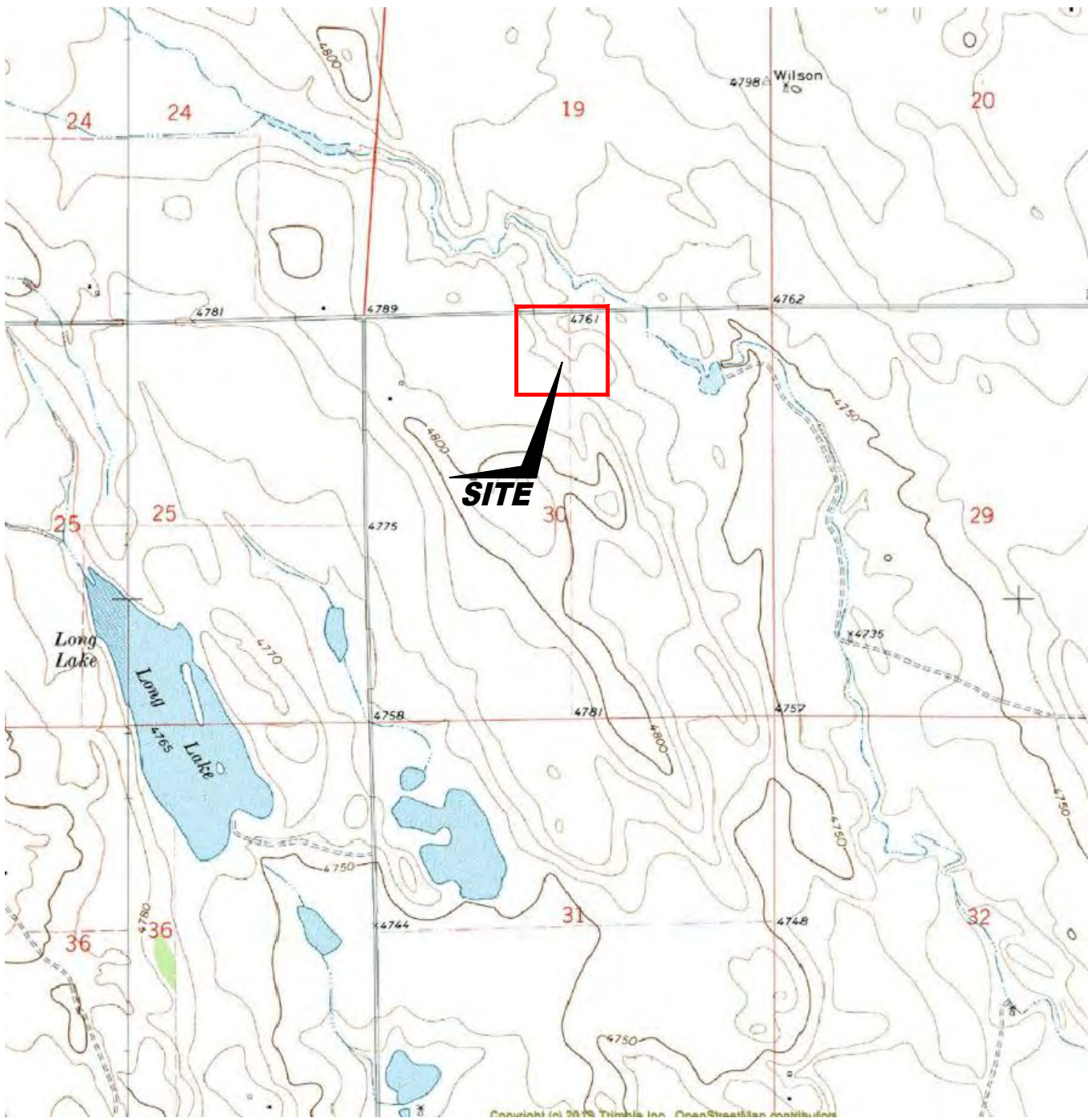
2. Red & blue highlighted soil analytical values indicate an exceedance of the referenced soil screening level (SSL)

* Indicates laboratory minimum detection limit in excess of SSL

NA - Not analyzed

 = Source material characterization sample, excavated and transported off site for disposal.

 = Material excavated and transported off site for disposal.



USGS 7.5 MINUTE SERIES (TOPOGRAPHIC)

Figure 1
SITE LOCATION MAP

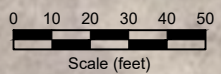
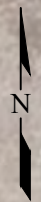
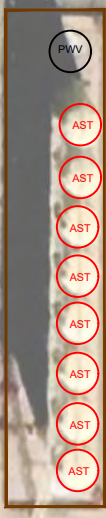
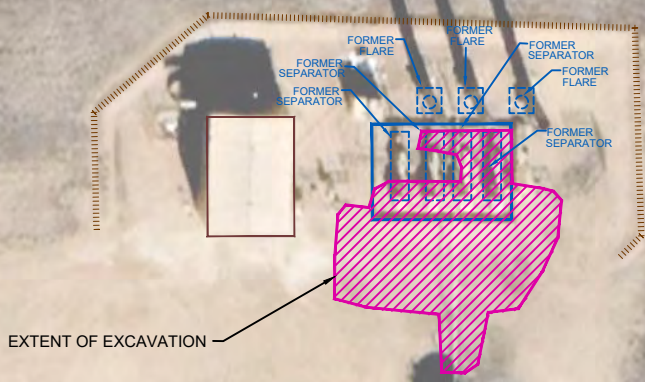
Noble Energy, Inc. ~ Grigsby AC19-62HN
 NENE, Sec 30, T7N, R63W, 6th P.M.
 Weld County, Colorado
 40.551843 ° -104.470751 °

Project No. CO24-022	Spill # 486087	Facility # 427074
Date 7/17/24	Remediation #	Filename 24022T



EXCAVATION TOTAL
 ~ 1,142 cubic yards
 Soil transported to N. Weld Landfill,
 Ault, Colorado

COUNTY ROAD 78



LEGEND

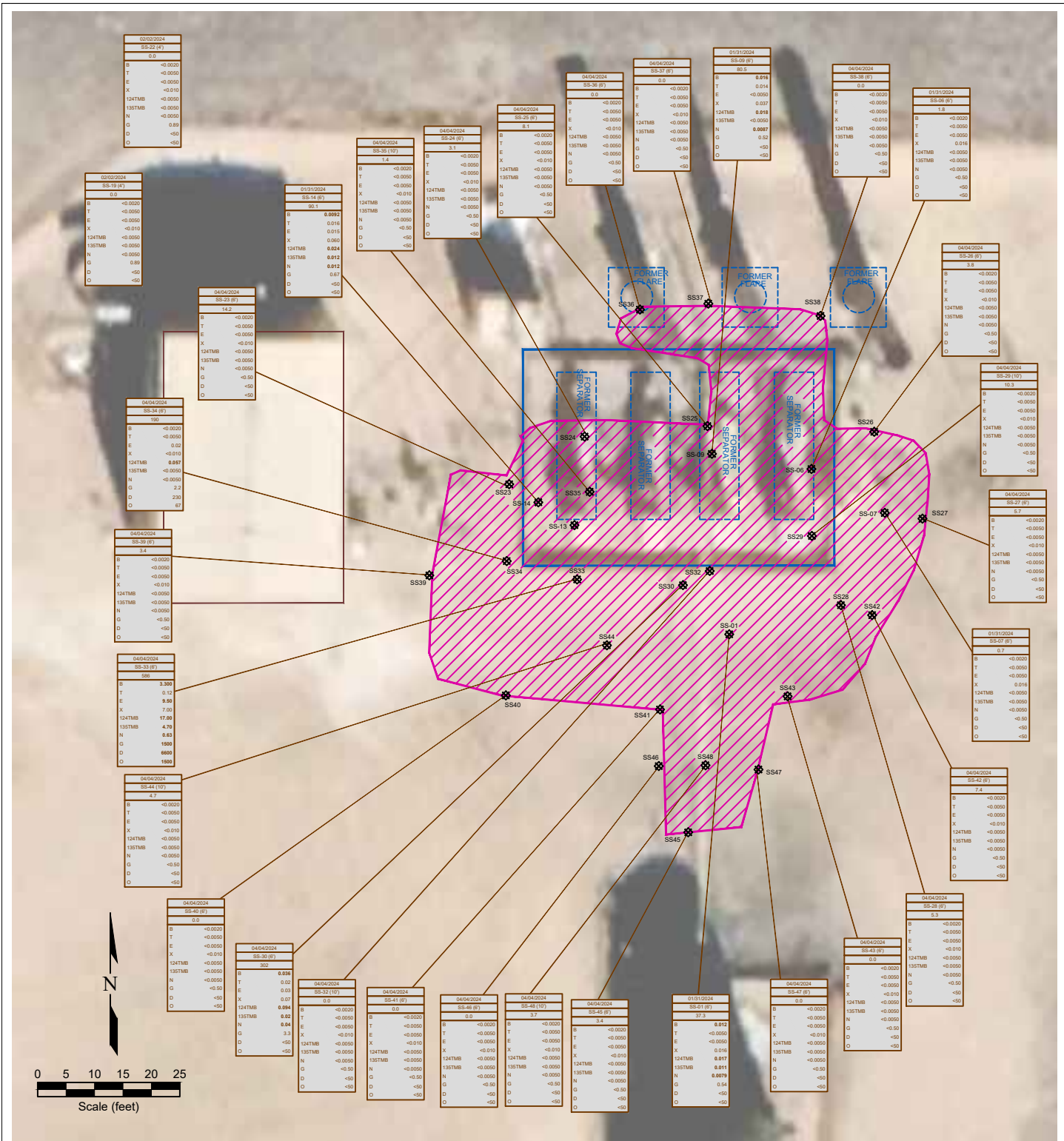
-  ABOVE GROUND STORAGE TANK
-  FORMER FACILITY
-  FENCE LINE
-  CONTAINMENT BERM
-  EXCAVATED AREA
-  BUILDING
-  CONTAINMENT WALL
-  EXTENT OF EXCAVATION

Figure 2
 SITE MAP

Noble Energy, Inc. ~ Grigsby AC19-62HN
 NENE, Sec 30, T7N, R63W, 6th P.M.
 Weld County, Colorado
 40.551843 ° -104.470751°

Project No. CO24-022	Spill # 486087	Facility # 427074
Date 7/17/24	Remediation #	Filename 24022Q1





LEGEND

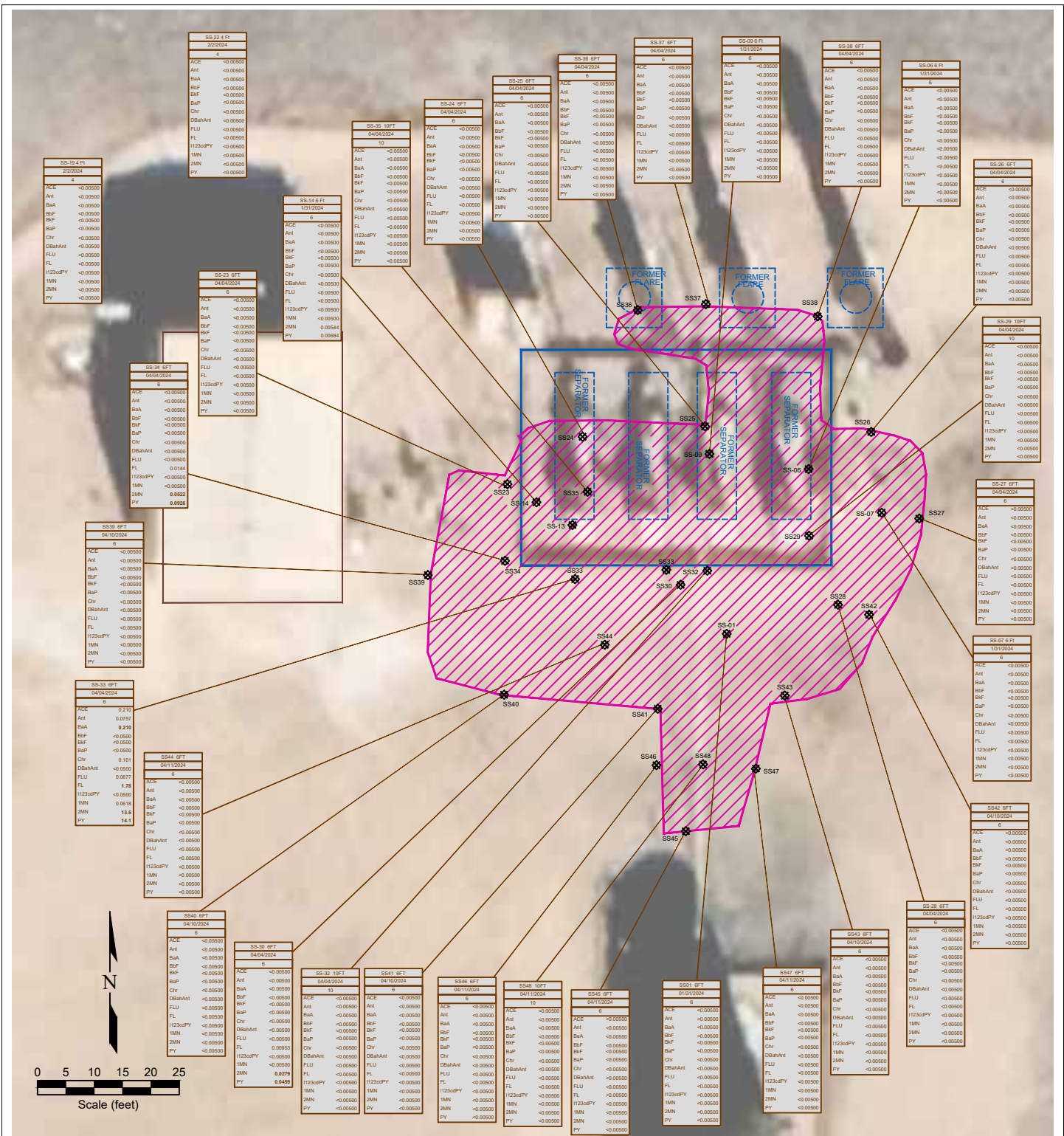
- SOIL SAMPLE LOCATION
- ABOVE GROUND STORAGE TANK
- FORMER FACILITY BUILDING
- FENCE LINE
- CONTAINMENT BERM
- EXCAVATED AREA
- CONTAINMENT WALL
- EXTENT OF EXCAVATION

01/31/2024	DATE SAMPLED
SS-01 (6')	SAMPLE ID and DEPTH (ft)
7.3	PID READING
B 0.013	BENZENE (mg/kg)
T <0.0050	TOLUENE (mg/kg)
E <0.0050	ETHYLBENZENE (mg/kg)
X 0.016	TOTAL XYLENES (mg/kg)
124TMB 0.017	1,2,4-TRIMETHYLBENZENE (mg/kg)
135TMB 0.011	1,3,5-TRIMETHYLBENZENE (mg/kg)
N 0.0079	NAPHTHALENE (mg/kg)
D 0.14	TPH-CRO (mg/kg)
G <0.50	TPH-DRO (mg/kg)
D <0.50	TPH-CRO (mg/kg)

Figure 3
ORGANIC SOIL CHEMISTRY MAP

Noble Energy, Inc. ~ Grigsby AC19-62HN
 NENE, Sec 30, T7N, R63W, 6th P.M.
 Weld County, Colorado
 40.551843 ° -104.470751 °

Project No. CO24-022	Spill # 486087	Facility # 427074	
Date 7/17/24	Remediation #	Filename 24022Q	



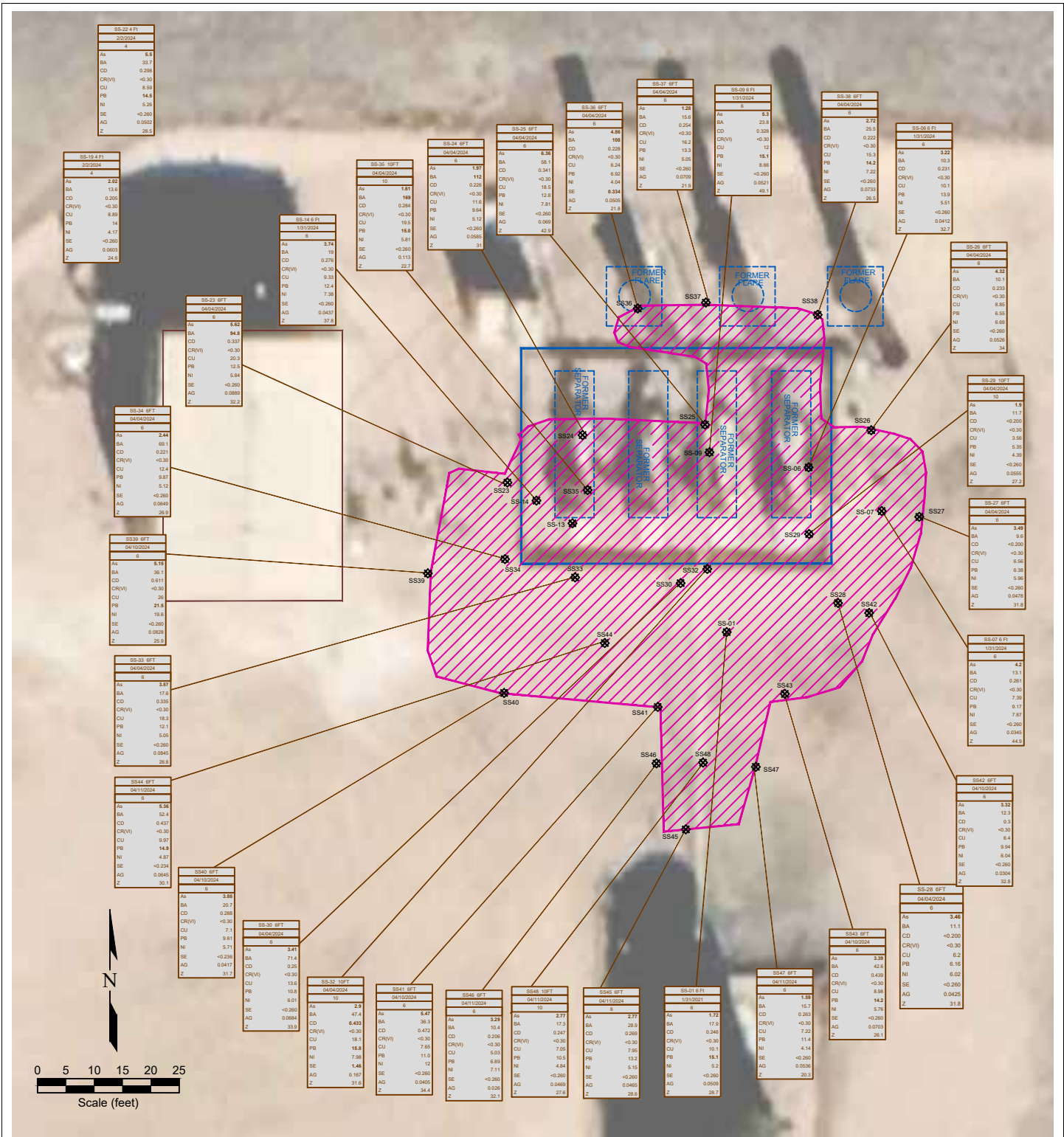
LEGEND

- SOIL SAMPLE LOCATION
- ABOVE GROUND STORAGE TANK
- FORMER FACILITY BUILDING
- EXCAVATED AREA
- FENCE LINE
- CONTAINMENT BERM
- CONTAINMENT WALL
- EXTENT OF EXCAVATION

SAMPLE ID	SAMPLE DATE	DEPTH (ft)	ACENAPHTHENE (mg/kg)	ANTHRACENE (mg/kg)	BENZO (A) ANTHRACENE (mg/kg)	BENZO (A) PYRENE (mg/kg)	BENZO (K) FLUORANTHENE (mg/kg)	CHRYSENE (mg/kg)	QUINZ (A,H) ANTHRACENE (mg/kg)	FLUORANTHENE (mg/kg)	FLUORENE (mg/kg)	INDENO (1,2,3-C) PYRENE (mg/kg)	1-METHYLNAPHTHALENE (mg/kg)	2-METHYLNAPHTHALENE (mg/kg)	PYRENE (mg/kg)
ACE	<0.0050														
Ant	<0.0050														
BAA	<0.0050														
BAF	<0.0050														
BbF	<0.0050														
BkF	<0.0050														
Chl	<0.0050														
DBaAnt	<0.0050														
FLU	<0.0050														
FL	<0.0050														
H123aPY	<0.0050														
MN	<0.0050														
MN	<0.0050														
2MN	<0.0050														
PY	<0.0050														

Figure 4
PAH IN SOIL CHEMISTRY MAP
Noble Energy, Inc. ~ Grigsby AC19-62HN
NENE, Sec 30, T7N, R63W, 6th P.M.
Weld County, Colorado
40.551843 ° -104.470751 °

Project No. CO24-022	Spill # 486087	Facility # 427074
Date 7/17/24	Remediation #	Filename 24022Q



LEGEND

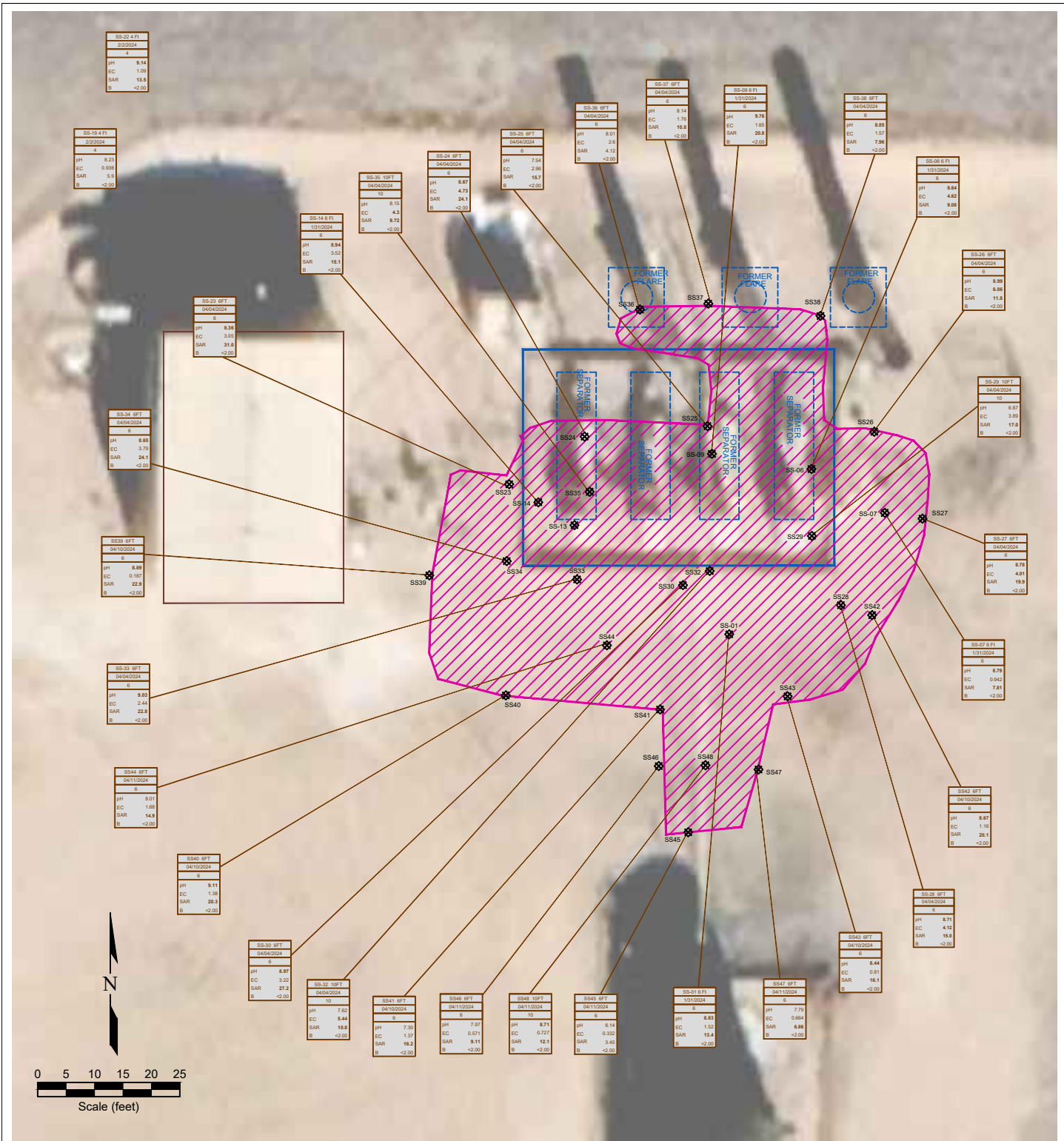
- SOIL SAMPLE LOCATION
- ABOVE GROUND STORAGE TANK
- FORMER FACILITY BUILDING
- EXCAVATED AREA
- FENCE LINE
- CONTAINMENT BERM
- CONTAINMENT WALL
- EXTENT OF EXCAVATION

SS48 10FT	SAMPLE ID	DATE SAMPLED
SS48 10FT	DEPTH (ft)	
As	2.77	ARSENIC (mg/kg)
Ba	17.0	BARIUM (mg/kg)
Cd	0.247	CADMIUM (mg/kg)
Cr(VI)	<0.30	CHROMIUM (mg/kg)
Cu	1.0	COPPER (mg/kg)
Pb	10.5	LEAD (mg/kg)
Ni	4.94	NICKEL (mg/kg)
Se	<0.200	SELENIUM (mg/kg)
Ag	0.0469	SILVER (mg/kg)
Z	27.6	ZINC (mg/kg)

Figure 5
METALS IN SOIL CHEMISTRY MAP

Noble Energy, Inc. ~ Grigsby AC19-62HN
NENE, Sec 30, T7N, R63W, 6th P.M.
Weld County, Colorado
40.551843 ° -104.470751 °

Project No. CO24-022	Spill # 486087	Facility # 427074	
Date 7/17/24	Remediation #	Filename 24022Q	



LEGEND

- SOIL SAMPLE LOCATION
- ABOVE GROUND STORAGE TANK
- FORMER FACILITY BUILDING
- EXCAVATED AREA
- FENCE LINE
- CONTAINMENT BERM
- CONTAINMENT WALL
- EXTENT OF EXCAVATION

SAMPLE	SAMPLE ID	DATE SAMPLED	DEPTH (ft)	pH (pH units)	EC (microhm/cm)	SAR (unitless)	B (mg/L)
SS-01	SS-01	04/10/2024	6	8.83	0.962	7.81	<-2.00
SS-02	SS-02	04/10/2024	6	8.83	0.962	7.81	<-2.00
SS-03	SS-03	04/10/2024	10	7.52	6.44	10.8	<-2.00
SS-04	SS-04	04/10/2024	6	8.83	0.962	7.81	<-2.00
SS-05	SS-05	04/10/2024	6	8.83	0.962	7.81	<-2.00
SS-06	SS-06	04/10/2024	6	8.83	0.962	7.81	<-2.00
SS-07	SS-07	04/10/2024	6	8.83	0.962	7.81	<-2.00
SS-08	SS-08	04/10/2024	6	8.83	0.962	7.81	<-2.00
SS-09	SS-09	04/10/2024	6	8.83	0.962	7.81	<-2.00
SS-10	SS-10	2/2/2024	4	8.23	0.498	5.9	<-2.00
SS-11	SS-11	04/04/2024	6	8.83	0.962	7.81	<-2.00
SS-12	SS-12	04/04/2024	6	8.83	0.962	7.81	<-2.00
SS-13	SS-13	04/04/2024	6	8.83	0.962	7.81	<-2.00
SS-14	SS-14	10/10/2024	6	8.84	3.12	18.1	<-2.00
SS-15	SS-15	04/04/2024	10	7.54	2.99	16.7	<-2.00
SS-16	SS-16	04/04/2024	6	8.87	4.73	24.1	<-2.00
SS-17	SS-17	04/04/2024	6	8.81	2.68	10.8	<-2.00
SS-18	SS-18	04/04/2024	6	8.14	1.76	28.8	<-2.00
SS-19	SS-19	04/04/2024	6	8.83	1.65	28.8	<-2.00
SS-20	SS-20	04/04/2024	6	8.83	1.65	28.8	<-2.00
SS-21	SS-21	04/04/2024	6	8.83	1.65	28.8	<-2.00
SS-22	SS-22	04/04/2024	6	8.83	1.65	28.8	<-2.00
SS-23	SS-23	10/10/2024	10	6.97	3.99	17.9	<-2.00
SS-24	SS-24	04/04/2024	6	8.83	0.962	7.81	<-2.00
SS-25	SS-25	04/04/2024	6	8.83	0.962	7.81	<-2.00
SS-26	SS-26	04/04/2024	6	8.83	0.962	7.81	<-2.00
SS-27	SS-27	04/04/2024	6	8.83	0.962	7.81	<-2.00
SS-28	SS-28	04/04/2024	6	8.83	0.962	7.81	<-2.00
SS-29	SS-29	04/04/2024	6	8.83	0.962	7.81	<-2.00
SS-30	SS-30	04/10/2024	6	8.83	0.962	7.81	<-2.00
SS-31	SS-31	04/10/2024	6	8.83	0.962	7.81	<-2.00
SS-32	SS-32	04/10/2024	6	8.83	0.962	7.81	<-2.00
SS-33	SS-33	04/10/2024	6	8.83	0.962	7.81	<-2.00
SS-34	SS-34	04/10/2024	6	8.83	0.962	7.81	<-2.00
SS-35	SS-35	04/10/2024	6	8.83	0.962	7.81	<-2.00
SS-36	SS-36	04/10/2024	6	8.83	0.962	7.81	<-2.00
SS-37	SS-37	04/10/2024	6	8.83	0.962	7.81	<-2.00
SS-38	SS-38	04/10/2024	6	8.83	0.962	7.81	<-2.00
SS-39	SS-39	04/10/2024	6	8.83	0.962	7.81	<-2.00
SS-40	SS-40	04/10/2024	6	8.83	0.962	7.81	<-2.00
SS-41	SS-41	04/10/2024	6	8.83	0.962	7.81	<-2.00
SS-42	SS-42	04/10/2024	6	8.83	0.962	7.81	<-2.00
SS-43	SS-43	04/10/2024	6	8.83	0.962	7.81	<-2.00
SS-44	SS-44	04/10/2024	6	8.83	0.962	7.81	<-2.00
SS-45	SS-45	04/10/2024	6	8.83	0.962	7.81	<-2.00
SS-46	SS-46	04/10/2024	6	8.83	0.962	7.81	<-2.00
SS-47	SS-47	04/10/2024	6	8.83	0.962	7.81	<-2.00
SS-48	SS-48	04/10/2024	6	8.83	0.962	7.81	<-2.00
SS-49	SS-49	04/10/2024	6	8.83	0.962	7.81	<-2.00
SS-50	SS-50	04/10/2024	6	8.83	0.962	7.81	<-2.00
SS-51	SS-51	10/10/2024	6	7.73	0.664	8.86	<-2.00
SS-52	SS-52	04/10/2024	6	8.83	0.962	7.81	<-2.00

Figure 6
INORGANIC SOIL CHEMISTRY MAP

Noble Energy, Inc. ~ Grigsby AC19-62HN
NENE, Sec 30, T7N, R63W, 6th P.M.
Weld County, Colorado
40.551843 ° -104.470751 °

Project No. CO24-022	Spill # 486087	Facility # 427074	
Date 7/17/24	Remediation #	Filename 24022Q	

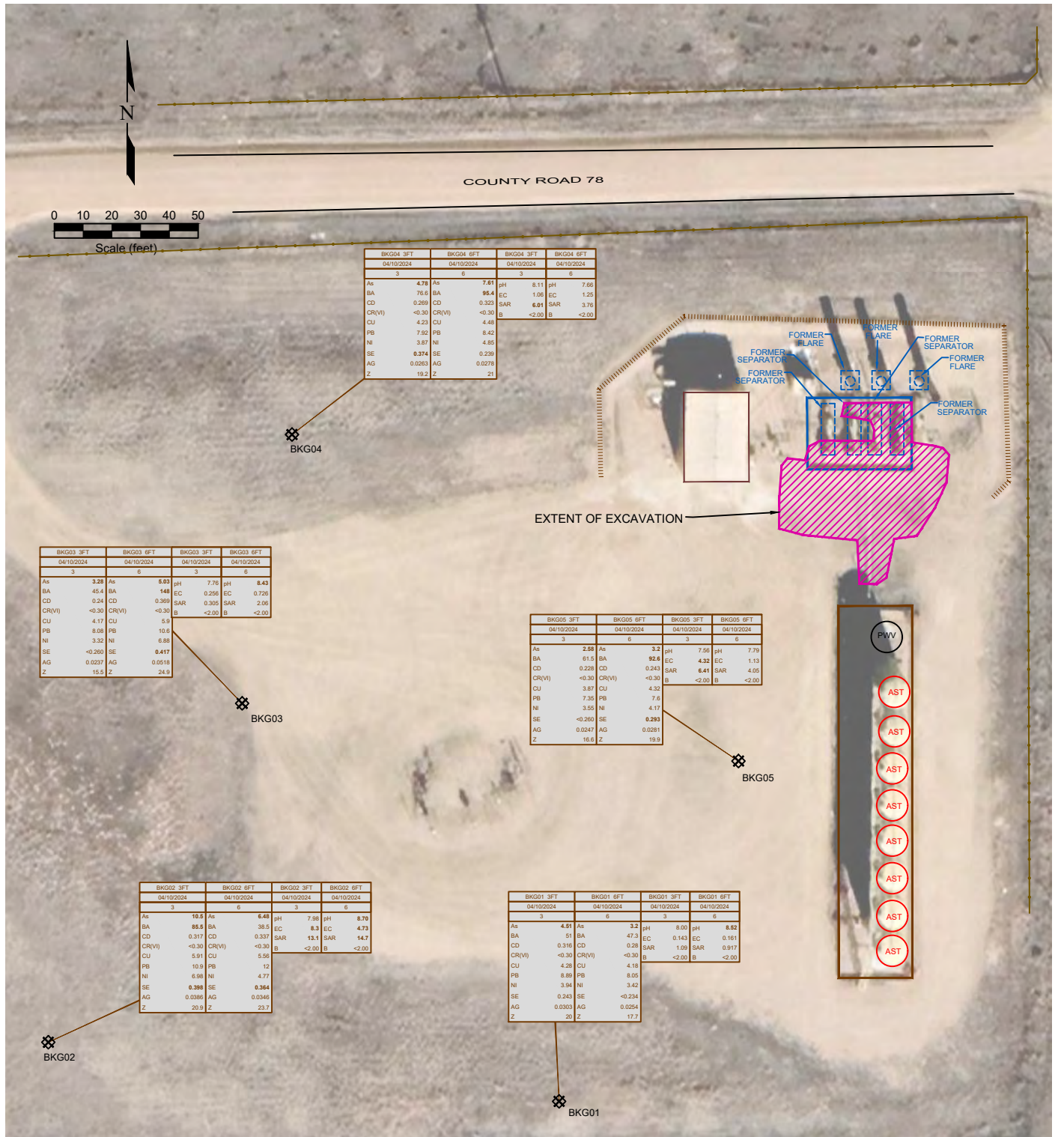


Figure 7
BACKGROUND SAMPLE SOIL CHEMISTRY MAP

Noble Energy, Inc. ~ Grigsby AC19-62HN
NENE, Sec 30, T7N, R63W, 6th P.M.
Weld County, Colorado
40.551843 ° -104.470751 °

Project No. CO24-022	Spill # 486087	Facility # 427074	
Date 7/17/24	Remediation #	Filename 24022Q1	

SAMPLE	SAMPLE ID	DATE SAMPLED	DATE SAMPLED		
As	<-0.01	ARSENIC (mg/kg)	pH	<-0.01	pH (units)
BA	<-0.01	BARIUM (mg/kg)	EC	<-0.01	EC (mmhos/cm)
CD	<-0.01	CADMIUM (mg/kg)	SAR	<-0.01	SAR (units)
CR(VI)	<-0.01	CHROMIUM (mg/kg)	B	<-0.01	BORON (mg/L)
CU	<-0.01	COPPER (mg/kg)			
PB	<-0.01	LEAD (mg/kg)			
NI	<-0.01	NICKEL (mg/kg)			
SE	<-0.01	SELENIUM (mg/kg)			
AG	<-0.01	SILVER (mg/kg)			
Z	<-0.01	ZINC (mg/kg)			

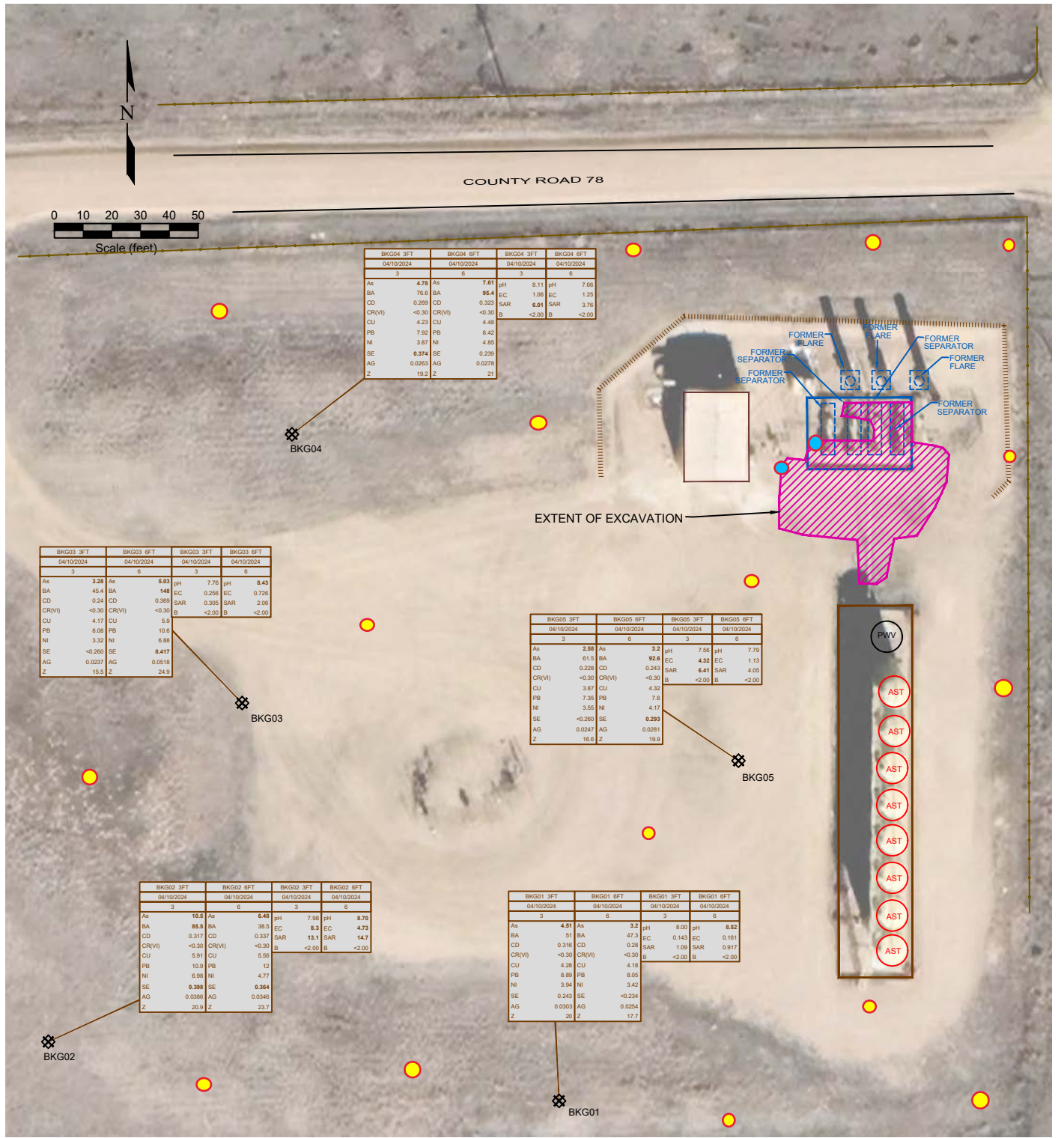


Figure 8
PROPOSED SOIL CHEMISTRY MAP

Noble Energy, Inc. ~ Grigsby AC19-62HN
 Weld County, Colorado
 40.551843 ° -104.470751 °

SAMPLE	SAMPLE ID	SAMPLE	SAMPLE ID
DATE	DATE SAMPLED	DATE	DATE SAMPLED
DEPTH	DEPTH (ft)	DEPTH	DEPTH (ft)
As	<-0.01	As	<-0.01
BA	<-0.01	BA	<-0.01
CD	<-0.01	CD	<-0.01
CR(VI)	<-0.01	CR(VI)	<-0.01
CU	<-0.01	CU	<-0.01
PB	<-0.01	PB	<-0.01
NI	<-0.01	NI	<-0.01
SE	<-0.01	SE	<-0.01
AG	<-0.01	AG	<-0.01
Z	<-0.01	Z	<-0.01

- Addtl Background Borings (x16) Soil samples at 6', 10' and 14'. Analyze for SSRs and metals
- Re-sample SS-23 and SS-24 Soil samples at 6' only Analyze for full Table 915-1

Project No. CO24-022	Spill # 486087	Facility # 427074	
Date 7/17/24	Remediation #	Filename 24022Q1	