

April 10, 2025

Jason Davidson  
Remediation Advisor  
Chevron USA Inc. (Operator: 100322)  
[jason.davidson@chevron.com](mailto:jason.davidson@chevron.com)

## Report of Work Completed – Wellhead and Flowline Closure

<b>ECMC Well Name (API #)</b>	FRANK CC #7-19 (05-123-25351)
<b>Client Location Name</b>	FRANK CC #7-19
<b>ECMC REM #</b>	32307
<b>Legal Description</b>	SENW Sec. 7 T4N-R63W
<b>Coordinates (Lat/Long)</b>	40.329994 / -104.484596
<b>County</b>	Weld County, Colorado

Mr. Davidson,

Confluence Compliance Companies, LLC (Confluence) prepared this Report of Work Completed (ROWC) for Chevron USA Inc. (Chevron) to document site investigation activities associated with the wellhead cut and cap and flowline abandonment at the Frank CC #7-19 well (Location). The Location is approximately 4.9 miles southwest of Hardin, Colorado, in Weld County as illustrated in the attached Topographic Map. Additional information on the Location and the associated remediation project is provided in the title block above, the attached Site Diagrams, and laboratory analytical tables. This ROWC provides background on the Location, methods used to complete the investigation, results of the investigation, and recommendations for how to proceed with this information.

### Background

Pursuant to Energy & Carbon Management Commission (ECMC) Rule 911, initial wellhead characterization sampling was completed on February 22, 2024, by a third-party consultant (Eagle Environmental Consulting, Inc.). Five soil samples were collected from the excavation sidewalls and base at depths of six to seven feet below ground surface (bgs) and were submitted to Origins Laboratory Inc. (Origins) for analysis of all ECMC Table 915-1 constituents of concern. Additionally, one background sample was collected at two feet bgs, and analyzed for Table 915-1 Soil Suitability for Reclamation (SSR) parameters and metals. Analytical results of the wellhead characterization samples indicated exceedances of Table 915-1 Protection of Groundwater Soil Screening Levels (PGSSLs) for benzene, 1,2,4-trimethylbenzene, 1,3,5-trimethylbenzene, 1-methylnaphthalene, 2-methylnaphthalene, arsenic, barium, lead, and selenium. One SSR exceedance of Sodium Adsorption Ratio (SAR) was detected. Organic constituents detected above PGSSLs were located at the north and east walls of the excavation at six feet bgs. The background sample exceeded the applicable standards for electrical conductivity (EC), SAR, boron, arsenic, barium and selenium.

On December 12, 2024, initial flowline characterization sampling was completed by a third-party consultant (Tasman Geosciences Inc.). The flowline was partially removed and partially abandoned-in-place due to the presence of additional buried lines. Soil samples were collected from three bell holes situated along the extent of the removed portion of the flowline at two feet bgs for field screening. The samples from the wellhead and the abandonment-in-place connection point were submitted to Origins for analysis of all Table 915-1 constituents. Additionally, background samples were collected at two and three feet bgs and analyzed for SSRs and metals. Analytical results of the flowline characterization samples indicate exceedances of Table 915-1 PGSSLs or SSRs for several organic

constituents, pH, and metals. The flowline-separator connection point was not sampled during the December 2024 event; this assessment will occur in conjunction with tank battery decommissioning. The background sample exceeded the applicable standards for arsenic, barium, cadmium, lead, and selenium.

## Methodology

### Wellhead Delineation

On February 24 and 25, 2025, Confluence returned to the Location to conduct delineation sampling around the wellhead and further characterize background soil conditions. Five soil borings were advanced via hydro vacuum truck and direct push drill rig to 15 feet bgs in the vicinity of the wellhead. The soil borings were completed as monitoring wells MW-01 through MW-05. Background soil borings BKG02 through BKG06 were advanced to 10 feet bgs. A total of 28 soil samples were collected and characterized using visual and olfactory observations and field-screened using a photoionization detector (PID). Ten of the samples, one per boring, were collected in laboratory provided jars, immediately placed on ice, and delivered to Origins under completed chain-of-custody forms. Delineation samples were analyzed for all Table 915-1 soil constituents of concern. Background samples were analyzed for Table 915-1 SSRs and metals.

### Groundwater Sampling

On March 12, 18, and 19, 2025, Confluence returned to the location to develop monitoring wells MW-01 through MW-05, and on March 20, 2025, Confluence conducted groundwater sampling. Groundwater samples were collected from each monitoring well using disposable poly bailers. Samples were field screened using visual and olfactory observations and water quality parameters were collected using a YSI Professional Plus Multiparameter Instrument (YSI). All samples were collected in laboratory provided jars, immediately placed on ice, and delivered to Origins under completed chain-of-custody forms for analysis of all Table 915-1 groundwater constituents of concern. Laboratory analytical results for groundwater samples are pending and will be provided in a subsequent report.

## Results

These results summarize observations from onsite remedial investigation efforts and associated laboratory analytical results. For organizational and presentation purposes, the results summary is divided between general observations of lithology and hydrogeology for the entire Location and site investigation activities. Collected spatial data are depicted in the attached Site Diagrams. Laboratory analytical results are presented in the attached Data Summary Tables.

### Lithology and Hydrogeology

Lithology at the Location is characterized primarily by sandy clay. Based on March 2025 groundwater observations, depth to groundwater in the vicinity of the wellhead ranges from 5.67 to 5.81 feet bgs.

### Wellhead Delineation Results

Field screening results of soil samples collected from MW-01 through MW-05 indicated PID measurements ranging from 0.2 to 7.6 parts per million (ppm). Analytical results of the soil samples indicated compliance with Table 915-1 PGSSLs for all organic constituents. Concentrations of arsenic, barium, lead, and selenium were detected at concentrations above PGSSLs for metals. Analytical results for SSR parameters indicated compliance with Table 915-1, with the exception of SAR.



## Background Soil Characterization Results

Field screening results of background soil samples indicated PID measurements ranging from 0.5 to 2.3 ppm. Analytical results of the soil samples indicated elevated levels of EC, SAR, boron, arsenic, barium, lead, and selenium.

## Analysis and Recommendations

Analytical results of wellhead delineation samples indicate organic constituents of concern were not present above laboratory detection levels. Elevated SAR levels were within observed background concentrations. Elevated metals were within 1.25 times background concentrations for all constituents except for lead in MW-05, which is situated within the initial wellhead characterization area. Based on this information, impacts at the wellhead have been laterally delineated for all constituents of concern and vertically delineated for all constituents, with the exception of lead.

Confluence recommends a flowline delineation investigation in the vicinity of FL01-02. Additionally, as part of Chevron's data integrity review for projects associated with Eagle Environmental, all point of compliance samples will be recollected in accordance with the approved initial Form 27 investigation plan and analyzed for full Table 915-1. Laboratory analytical results for groundwater samples collected on March 20, 2025, are pending and will be included in a subsequent report. Groundwater monitoring will be conducted on a quarterly basis until compliance with Table 915-1 groundwater standards is demonstrated for four consecutive quarters.

Confluence is grateful for the opportunity to support you with this project. If you have any questions about the methods, results or recommendations presented here, please do not hesitate to contact us.

Regards,



Amanda Baca  
Project Scientist  
(719) 250-0005  
[amanda.baca@confluence-cc.com](mailto:amanda.baca@confluence-cc.com)

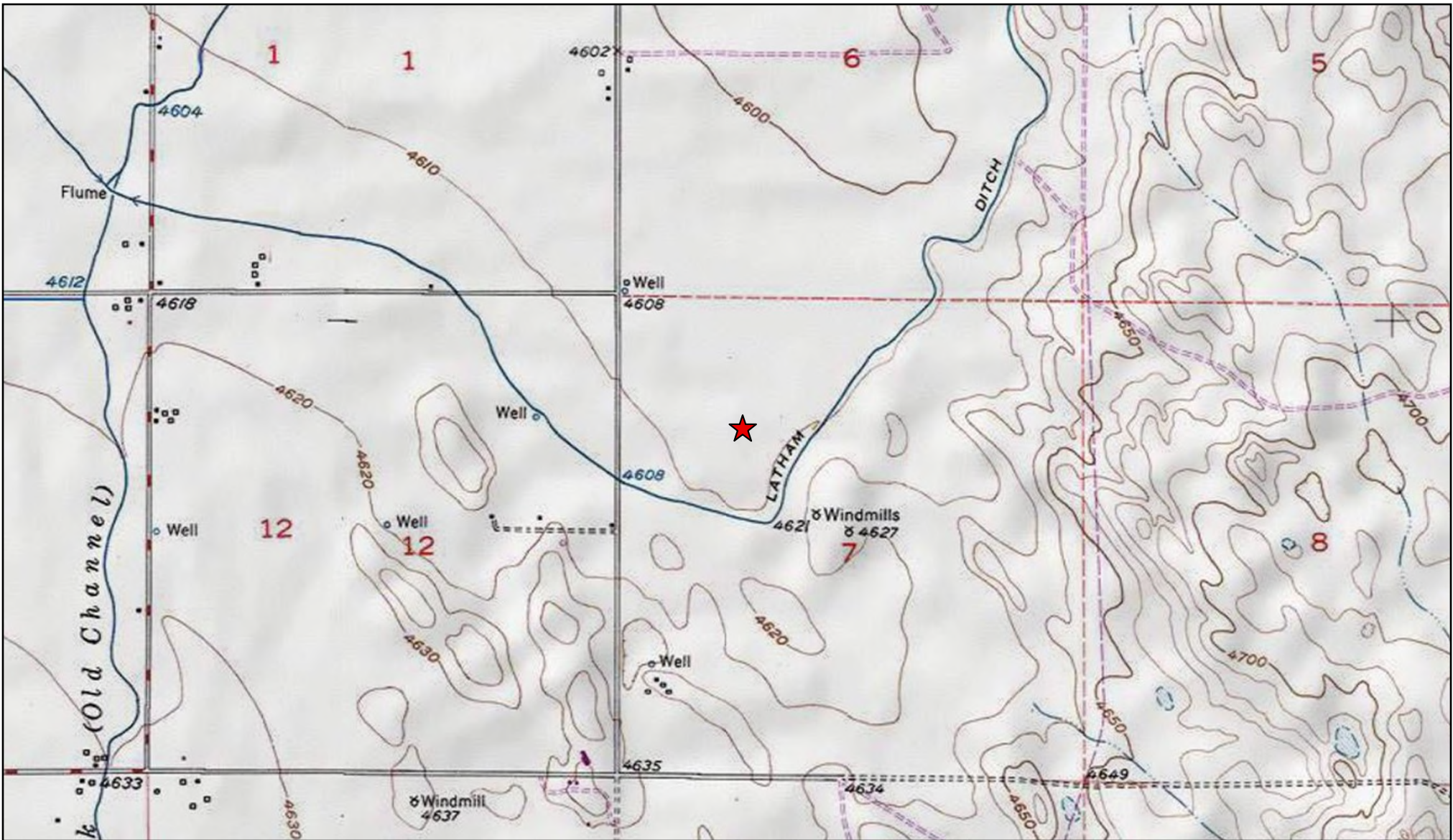


Chris McKisson  
Remediation Program Manager  
(720) 490-6758  
[chris.mckisson@confluence-cc.com](mailto:chris.mckisson@confluence-cc.com)

## Attachments

- Topographic Location Map
- Site Diagram : Flowline and Background Samples
- Site Diagram : Wellhead Samples
- Table 1: Field Data Summary Table
- Table 2: Summary of Volatile Organic Soil Chemistry Data
- Table 3: Summary of Polycyclic Hydrocarbon Soil Chemistry Data
- Table 4: Summary of Soil Suitability for Reclamation
- Table 5: Summary of Metals in Soil Chemistry Data
- Photographic Log
- Soil Boring Logs

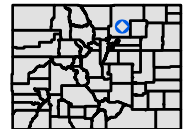
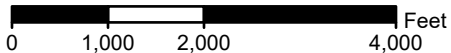




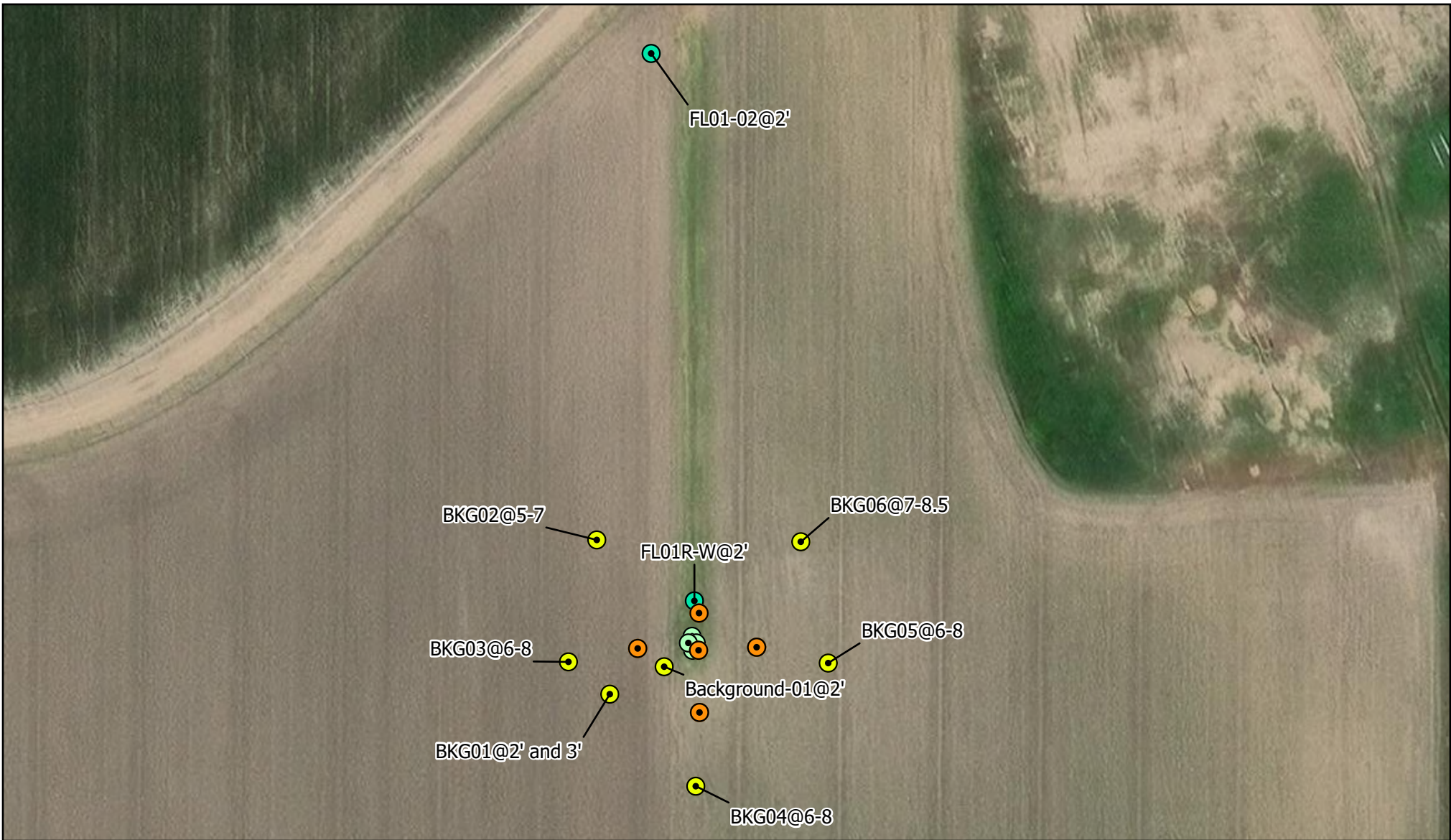
## Topographic Location Map

operator name (#): Noble Energy, Inc. (100322)  
 name (API/ID): FRANK CC #7-19 (05-123-25351)  
 legal description: SENW Sec.7 T4N-R63W  
 city, county: Unincorporated, Weld  
 lat/long: 40.329994/-104.484596

 Location



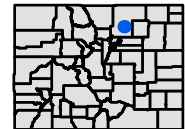
Spatial data is sourced from the ECMC. Illustration discrepancies may be present in this diagram due to the inherent limitations of data accuracy for both project data and the underlying aerial imagery. The position of illustrated data may have been manually adjusted to align with the aerial imagery in a manner more representative of field conditions for presentation purposes only.



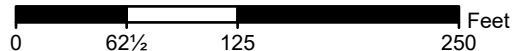
## Site Diagram: Flowline and Background Samples

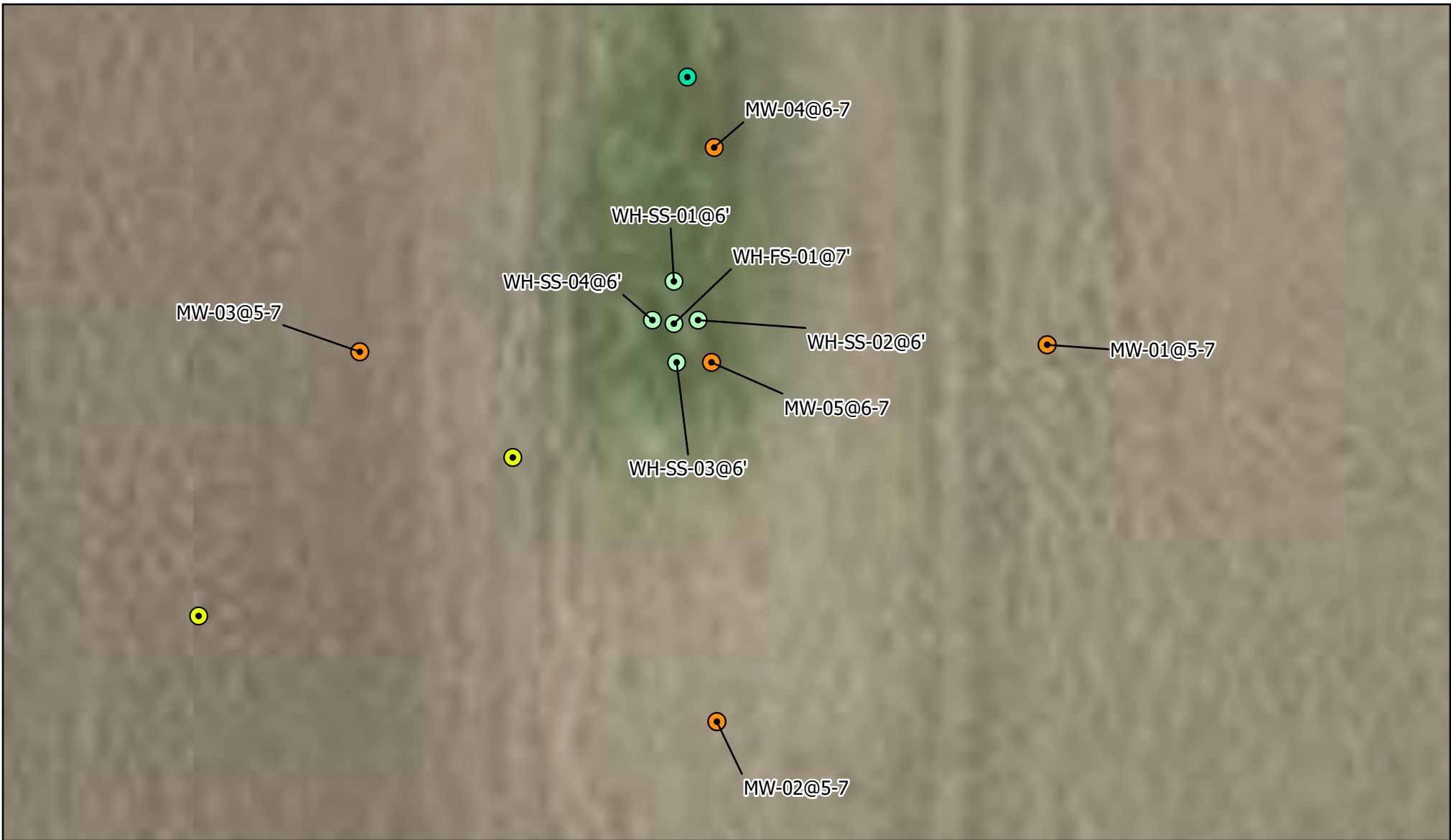
operator name (#): Noble Energy, Inc. (100322)  
 name (API/ID): FRANK CC #7-19 (05-123-25351)  
 legal description: SENW Sec.7 T4N-R63W  
 city, county: Unincorporated, Weld  
 lat/long: 40.329994/-104.484596

- Flowline Soil Sample - Initial Characterization
- Background Soil Sample
- Wellhead Soil Sample - Initial Characterization
- Soil Boring - Delineation/Monitoring Well



Spatial data was collected using a small unmanned aircraft system. Illustration discrepancies may be present in this diagram due to the inherent limitations of data accuracy for both project data and the underlying aerial imagery. The position of illustrated data may have been manually adjusted to align with the aerial imagery in a manner more representative of field conditions for presentation purposes only.

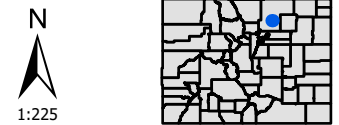
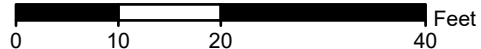




## Site Diagram: Wellhead Samples

operator name (#): Noble Energy, Inc. (100322)  
 name (API/ID): FRANK CC #7-19 (05-123-25351)  
 legal description: SENW Sec.7 T4N-R63W  
 city, county: Unincorporated, Weld  
 lat/long: 40.329994/-104.484596

- Flowline Soil Sample - Initial Characterization
- Background Soil Sample
- Wellhead Soil Sample - Initial Characterization
- Soil Boring - Delineation/Monitoring Well



Spatial data was collected using a small unmanned aircraft system. Illustration discrepancies may be present in this diagram due to the inherent limitations of data accuracy for both project data and the underlying aerial imagery. The position of illustrated data may have been manually adjusted to align with the aerial imagery in a manner more representative of field conditions for presentation purposes only.

**TABLE 1**  
**FIELD DATA SUMMARY TABLE**  
**NOBLE 100322**  
**FRANK CC #7-19, WELD COUNTY, COLORADO**  
**REM # 32307**

Sample ID	Sample Date	Depth (ft)	GPS Data		PDOP Value	VOC Concentration (ppm)
			Latitude/Longitude			
WH-FS-01@7'	2/22/2024	7	40.330021	-104.484608		18.7
WH-SS-01@6'	2/22/2024	6	40.330033	-104.484608		33.6
WH-SS-02@6'	2/22/2024	6	40.330022	-104.484599		30.5
WH-SS-03@6'	2/22/2024	6	40.330010	-104.484607		1.6
WH-SS-04@6'	2/22/2024	6	40.330022	-104.484616		1.7
WH-N@0.5'	2/22/2024	0.5	40.330045	-104.484609		1.2
WH-E@0.5'	2/22/2024	0.5	40.330023	-104.484579		0.7
WH-S@0.5'	2/22/2024	0.5	40.330002	-104.484607		0.9
WH-W@0.5'	2/22/2024	0.5	40.330020	-104.484633		1.5
Background-01@2'	2/22/2024	2	40.329983	-104.484668		0.9
FL01R-W@2'	12/12/2024	2	40.330091	-104.484603	0.9	0.8
FL01-01@2'	12/12/2024	2	40.330550	-104.484630	0.9	3.6
FL01-02@2'	12/12/2024	2	40.330989	-104.484696	0.7	4.6
BKG01@2'	12/12/2024	2	40.329938	-104.484785	1.0	0.3
BKG01@3'	12/12/2024	3	40.329938	-104.484785	1.0	1.0
MW-01@5-7	2/24/2025	5-7	40.330015	-104.484469		7.6
MW-02@5-7	2/24/2025	5-7	40.329908	-104.484592		1.2
MW-03@5-7	2/24/2025	5-7	40.330013	-104.484725		1.9
MW-04@6-7	2/24/2025	6-7	40.330071	-104.484593		0.2
MW-05@6-7	2/24/2025	6-7	40.330010	-104.484594		1.0
BKG02@5-7	2/24/2025	5-7	40.330191	-104.484813		1.6
BKG03@6-8	2/24/2025	6-8	40.329991	-104.484874		0.5
BKG04@6-8	2/24/2025	6-8	40.329787	-104.484600		0.6
BKG05@6-8	2/24/2025	6-8	40.329989	-104.484315		1.1
BKG06@7-8.5	2/24/2025	7-8.5	40.330188	-104.484374		2.3

1. Global Positioning System (GPS) data is provided in decimal degrees using North American Datum (NAD) 83 UTMZone 13 North.

2. Volatile organic compound (VOC) concentrations are measured in the field using a photoionization detector (PID).

PDOP = Position Dilution of Precision

ppm = Parts per million

ft. = Feet

bgs = Below ground surface

TABLE 2  
SUMMARY OF VOLATILE ORGANIC SOIL CHEMISTRY DATA  
NOBLE 100322  
FRANK CC #7-19, WELD COUNTY, COLORADO  
REM # 32307

Sample ID	Sample Date	Depth (ft)	Benzene (mg/kg)	Toluene (mg/kg)	Ethyl-Benzene (mg/kg)	Xylenes (mg/kg)	1,2,4-Trimethyl-Benzene (mg/kg)	1,3,5-Trimethyl-Benzene (mg/kg)	Naphthalene (mg/kg)	TPH (mg/kg)	TPH GRO (mg/kg)	TPH DRO (mg/kg)	TPH ORO (mg/kg)
ECMC Table 915-1 Limits (Residential SSL)			1.2	490	5.8	58	30	27	2	500	500**		
ECMC Table 915-1 Limits (Protection of Groundwater SSL)			0.0026	0.69	0.78	9.9	0.0081	0.0087	0.0038	500	500**		
WH-SS-01@6'	2/22/2024	6	<b>0.00462</b>	0.0426	0.00952	0.117	<b>0.0194</b>	<b>0.00892</b>	<0.00380	0.719	0.719	<25.0	<100
WH-SS-02@6'	2/22/2024	6	<0.00200	0.00358	<0.00200	0.0107	0.00356	0.00206	<0.00380	<500	<0.200	<25.0	<100
WH-SS-03@6'	2/22/2024	6	<0.00200	<0.00200	<0.00200	<0.00200	<0.00200	<0.00200	<0.00380	<500	<0.200	<25.0	<100
WH-SS-04@6'	2/22/2024	6	<0.00200	<0.00200	<0.00200	<0.00200	<0.00200	<0.00200	<0.00380	<500	<0.200	<25.0	<100
WH-FS-01@7'	2/22/2024	7	<0.00200	0.00286	<0.00200	0.0132	0.00472	0.00274	<0.00380	<500	<0.200	<25.0	<100
FL01-02 @ 2'	12/12/2024	2	<0.0020	<0.0050	<0.0050	<0.010	<0.0050	<0.0050	<b>0.0097</b>	<500	<0.50	<50	<50
FL01R-W @ 2'	12/12/2024	2	<0.0020	<0.0050	<0.0050	<0.010	<0.0050	<0.0050	<0.00380	<500	<0.50	<50	<50
MW-01@5-7	2/24/2025	5-7	<0.00200	<0.00200	0.00220	0.0161	<0.00200	<0.00200	<0.00380	<500	<0.200	<25.0	<100
MW-02@5-7	2/24/2025	5-7	<0.00200	<0.00200	<0.00200	<0.00200	<0.00200	<0.00200	<0.00380	<500	<0.200	<25.0	<100
MW-03@5-7	2/24/2025	5-7	<0.00200	<0.00200	<0.00200	<0.00200	<0.00200	<0.00200	<0.00380	<500	<0.200	<25.0	<100
MW-04@6-7	2/24/2025	6-7	<0.00200	<0.00200	<0.00200	<0.00200	<0.00200	<0.00200	<0.00380	<500	<0.200	<25.0	<100
MW-05@6-7	2/24/2025	6-7	<0.00200	<0.00200	<0.00200	<0.00200	<0.00200	<0.00200	<0.00380	<500	<0.200	<25.0	<100

1. Bold values exceed the ECMC Table 915-1 limit(s)

2. Red & blue highlighted soil analytical values indicate an exceedance of the referenced soil screening level (SSL)

3. \* Indicates laboratory minimum detection limit in excess of SSL

4. \*\* Summation of GRO+DRO+ORO must be less than 500 mg/kg

(<) = Analytical result is less than the indicated laboratory reporting limit.

TPH-GRO = Total petroleum hydrocarbons - gasoline range organics

TPH-DRO = Total petroleum hydrocarbons - diesel range organics

TPH-ORO = Total petroleum hydrocarbons - oil range organics

mg/kg = Milligrams per kilogram

ft. = Feet

NA - Not analyzed

TABLE 3  
SUMMARY OF POLYCYCLIC AROMATIC HYDROCARBON SOIL CHEMISTRY DATA  
NOBLE 100322  
FRANK CC #7-19, WELD COUNTY, COLORADO  
REM # 32307

Sample ID	Sample Date	Depth (ft)	Acenaphthene (mg/kg)	Anthracene (mg/kg)	Benzo (a) Anthracene (mg/kg)	Benzo (a) Pyrene (mg/kg)	Benzo (b) Fluoranthene (mg/kg)	Benzo (k) Fluoranthene (mg/kg)	Chrysene (mg/kg)	Dibenzo (a,h) Anthracene (mg/kg)	Fluoranthene (mg/kg)	Fluorene (mg/kg)	Indeno (1,2,3-cd) Pyrene (mg/kg)	Pyrene (mg/kg)	1-Methyl - Naphthalene (mg/kg)	2-Methyl - Naphthalene (mg/kg)
ECMC Table 915-1 Limits (Residential SSL)			360	1800	1.1	0.11	1.1	11	110	0.11	240	240	1.1	180	18	24
ECMC Table 915-1 Limits (Protection of Groundwater SSL)			0.55	5.8	0.011	0.24	0.3	2.9	9	0.096	8.9	0.54	0.98	1.3	0.006	0.019
WH-SS-01@6'	2/22/2024	6	<0.020	<0.020	<0.005	<0.020	<0.020	<0.020	<0.020	<0.020	<0.020	<0.020	<0.020	<0.020	<b>0.012</b>	<b>0.026</b>
WH-SS-02@6'	2/22/2024	6	<0.020	<0.020	<0.005	<0.020	<0.020	<0.020	<0.020	<0.020	<0.020	<0.020	<0.020	<0.020	<b>0.011</b>	<b>0.021</b>
WH-SS-03@6'	2/22/2024	6	<0.020	<0.020	<0.005	<0.020	<0.020	<0.020	<0.020	<0.020	<0.020	<0.020	<0.020	<0.020	<0.002	<0.002
WH-SS-04@6'	2/22/2024	6	<0.020	<0.020	<0.005	<0.020	<0.020	<0.020	<0.020	<0.020	<0.020	<0.020	<0.020	<0.020	<0.002	<0.002
WH-FS-01@7'	2/22/2024	7	<0.020	<0.020	<0.005	<0.020	<0.020	<0.020	<0.020	<0.020	<0.020	<0.020	<0.020	<0.020	<0.002	<0.002
FL01-02 @ 2'	12/12/2024	2	0.541	0.994	<b>0.896</b>	<b>0.551</b>	<b>0.846</b>	0.280	0.797	0.0225	1.79	<b>0.766</b>	0.456	<b>1.66</b>	<b>0.0744</b>	<b>0.142</b>
FL01R-W @ 2'	12/12/2024	2	<0.00500	0.00639	0.00793	0.00548	0.00710	<0.00500	0.00642	<0.00500	0.0179	<0.00500	<0.00500	0.0142	<0.00500	<0.00500
MW-01@5-7	2/24/2025	5-7	<0.0833	<0.0833	<0.0110	<0.0833	<0.0833	<0.0833	<0.0833	<0.0833	<0.0833	<0.0833	<0.0833	<0.0833	<0.00600	<0.0150
MW-02@5-7	2/24/2025	5-7	<0.0833	<0.0833	<0.0110	<0.0833	<0.0833	<0.0833	<0.0833	<0.0833	<0.0833	<0.0833	<0.0833	<0.0833	<0.00600	<0.0150
MW-03@5-7	2/24/2025	5-7	<0.0833	<0.0833	<0.0110	<0.0833	<0.0833	<0.0833	<0.0833	<0.0833	<0.0833	<0.0833	<0.0833	<0.0833	<0.00600	<0.0150
MW-04@6-7	2/24/2025	6-7	<0.0833	<0.0833	<0.0110	<0.0833	<0.0833	<0.0833	<0.0833	<0.0833	<0.0833	<0.0833	<0.0833	<0.0833	<0.00600	<0.0150
MW-05@6-7	2/24/2025	6-7	<0.0833	<0.0833	<0.0110	<0.0833	<0.0833	<0.0833	<0.0833	<0.0833	<0.0833	<0.0833	<0.0833	<0.0833	<0.00600	<0.0150

- Bold values exceed the ECMC Table 915-1 limit(s)
  - Red & blue highlighted soil analytical values indicate an exceedance of the referenced soil screening level (SSL)
  - \* Indicates laboratory minimum detection limit in excess of SSL
  - \*\* Summation of GRO+DRO+ORO must be less than 500 mg/kg
- (<) = Analytical result is less than the indicated laboratory reporting limit.  
 TPH-GRO = Total petroleum hydrocarbons - gasoline range organics  
 TPH-DRO = Total petroleum hydrocarbons - diesel range organics  
 TPH-ORO = Total petroleum hydrocarbons - oil range organics  
 mg/kg = Milligrams per kilogram  
 ft. = Feet  
 NA - Not analyzed

**TABLE 4**  
**SUMMARY OF SOIL SUITABILITY FOR RECLAMATION**  
**NOBLE 100322**  
**FRANK CC #7-19, WELD COUNTY, COLORADO**  
**REM # 32307**

Sample ID	Sample Date	Depth (ft)	pH (Standard Units)	EC (mmhos/cm)	SAR (Standard Units)	Boron (mg/L)
ECMC Table 915-1 Soil Suitability Limits			6 - 8.3	<4	<6	2
WH-SS-01@6'	2/22/2024	6	8.21	2.32	4.51	1.01
WH-SS-02@6'	2/22/2024	6	8.30	1.38	<b>6.89</b>	1.07
WH-SS-03@6'	2/22/2024	6	8.09	1.11	1.89	0.825
WH-SS-04@6'	2/22/2024	6	8.28	0.916	1.87	0.991
WH-FS-01@7'	2/22/2024	7	8.24	0.961	2.20	1.02
Background-01@2'	2/22/2024	2	8.09	<b>4.94</b>	<b>6.73</b>	<b>2.39</b>
FL01-02 @ 2'	12/12/2024	2	<b>8.38</b>	0.604	2.82	<2.00
FL01R-W @ 2'	12/12/2024	2	8.08	1.29	4.80	<2.00
BKG01 @ 2'	12/12/2024	2	7.85	2.03	3.57	<2.00
BKG01 @ 3'	12/12/2024	3	8.03	2.31	4.93	<2.00
MW-01@5-7	2/24/2025	5-7	8.26	3.72	<b>10.8</b>	1.87
MW-02@5-7	2/24/2025	5-7	8.24	3.81	<b>14.1</b>	1.80
MW-03@5-7	2/24/2025	5-7	8.25	3.77	<b>11.6</b>	1.46
MW-04@6-7	2/24/2025	6-7	8.28	1.44	<b>10.6</b>	1.24
MW-05@6-7	2/24/2025	6-7	8.06	1.93	2.67	0.980
BKG02@5-7	2/24/2025	5-7	8.23	2.30	<b>11.3</b>	1.27
BKG03@6-8	2/24/2025	6-8	8.09	3.71	<b>10.8</b>	1.88
BKG04@6-8	2/24/2025	6-8	8.16	2.59	<b>7.46</b>	1.10
BKG05@6-8	2/24/2025	6-8	8.22	3.89	<b>15.1</b>	<b>2.73</b>
BKG06@7-8.5	2/24/2025	7-8.5	8.09	<b>5.68</b>	<b>8.99</b>	1.79
Maximum Background Concentration			8.09	5.68	15.1	2.73

1. **Bold** faced values exceed the ECMC Table 915-1 limit(s), but are within background concentrations.
2. **Red** faced values exceed the ECMC Table 915-1 limit(s) and native background concentrations.
3. Brown highlighted soil analytical values indicate a regulatory exceedance.

NA - Not analyzed

TABLE 5  
SUMMARY OF METALS IN SOIL CHEMISTRY DATA  
NOBLE 100322  
FRANK CC #7-19, WELD COUNTY, COLORADO  
REM # 32307

Sample ID	Sample Date	Depth (ft)	Arsenic (mg/kg)	Barium (mg/kg)	Cadmium (mg/kg)	Chromium (VI) (mg/kg)	Copper (mg/kg)	Lead (mg/kg)	Nickel (mg/kg)	Selenium (mg/kg)	Silver (mg/kg)	Zinc (mg/kg)
ECMC Table 915-1 Limits (Residential SSL)			0.68	15000	71	0.3	3100	400	1500	390	390	23000
ECMC Table 915-1 Limits (Protection of Groundwater SSL)			0.29	82	0.38	0.00067	46	14	26	0.26	0.8	370
WH-SS-01@6'	2/22/2024	6	3.45	130	0.277	<0.244*	15.0	18.8	12.6	0.409	<0.0996	82.6
WH-SS-02@6'	2/22/2024	6	4.26	207	0.299	<0.244*	17.2	30.1	13.8	0.440	0.173	91.6
WH-SS-03@6'	2/22/2024	6	3.47	142	0.378	<0.249*	16.4	35.1	12.8	0.349	<0.0986	91.2
WH-SS-04@6'	2/22/2024	6	3.57	164	0.270	<0.244*	15.5	16.1	13.1	0.385	<0.0841	91.4
WH-FS-01@7'	2/22/2024	7	3.70	190	0.264	<0.244*	15.9	23.6	13.5	0.409	0.142	87.4
Background-01@2'	2/22/2024	2	3.81	148	0.239	<0.244*	14.6	11.8	13.0	0.313	<0.0840	82.0
FL01-02 @ 2'	12/12/2024	2	3.72	159	0.448	<0.30*	18.3	14.5	13.2	<0.260	0.0882	73.3
FL01R-W @ 2'	12/12/2024	2	4.69	223	0.507	<0.30*	20.3	16.1	17.1	0.397	0.0911	71.9
BKG01 @ 2'	12/12/2024	2	4.83	171	0.482	<0.30*	20.3	15.9	15.9	0.338	0.0907	75.5
BKG01 @ 3'	12/12/2024	3	4.29	164	0.489	<0.30*	18.9	15.1	16.6	0.394	0.0944	67.2
MW-01@5-7	2/24/2025	5-7	4.45	154	0.247	<0.19*	16.4	13.0	14.6	0.371	<0.0890	79.7
MW-02@5-7	2/24/2025	5-7	5.48	233	0.219	<0.20*	19.5	15.1	19.4	0.331	<0.0858	86.6
MW-03@5-7	2/24/2025	5-7	5.56	226	0.230	<0.20*	19.6	16.4	18.2	0.344	<0.0936	86.4
MW-04@6-7	2/24/2025	6-7	6.19	181	0.251	<0.20*	21.1	16.2	21.4	0.294	<0.0892	93.7
MW-05@6-7	2/24/2025	6-7	5.51	259	0.225	<0.20*	19.3	31.9	17.4	0.512	<0.0949	83.3
BKG02@5-7	2/24/2025	5-7	4.89	257	0.203	<0.19*	24.6	17.7	19.7	0.368	0.107	102
BKG03@6-8	2/24/2025	6-8	6.57	205	0.240	<0.21*	23.1	16.9	20.9	0.332	<0.0958	94.7
BKG04@6-8	2/24/2025	6-8	5.77	126	0.173	<0.20*	12.7	9.92	12.3	0.283	<0.0900	56.5
BKG05@6-8	2/24/2025	6-8	6.29	246	0.270	<0.19*	22.2	16.4	21.1	0.340	<0.0835	95.0
BKG06@7-8.5	2/24/2025	7-8.5	4.26	216	0.182	<0.20*	12.9	10.5	13.6	0.259	<0.0930	61.4
1.25x Maximum Background Concentration			8.21	321	0.611	NA	NA	22.1	26.4	0.493	NA	NA

1. **Bold** faced values exceed the ECMC Table 915-1 limit(s), but are within 1.25x background concentrations.
2. **Red** faced values exceed the ECMC Table 915-1 limit(s) and native background concentrations.
3. Red & blue highlighted soil analytical values indicate an exceedance of the referenced soil screening level (SSL).
4. Non-detect background results accounted for in the highest background concentration by using the reporting limit.

ECMC = Energy & Carbon Management Commission

(<) = Analytical result is less than the indicated laboratory reporting limit.

mg/kg = Milligrams per kilogram

ft. = Feet

\* Indicates laboratory minimum detection limit in excess of SSL

NA - Not analyzed



## Photographic Log

Remediation Investigation  
Frank CC 7-19 (API: 05-123-25351)



Soil Boring Location MW-01: View South



## Photographic Log

Remediation Investigation  
Frank CC 7-19 (API: 05-123-25351)



Soil Boring Location MW-02: View East



## Photographic Log

Remediation Investigation  
Frank CC 7-19 (API: 05-123-25351)



Soil Boring Location MW-03: View Southwest



## Photographic Log

Remediation Investigation  
Frank CC 7-19 (API: 05-123-25351)



Soil Boring Location MW-04: View Southeast



## Photographic Log

Remediation Investigation  
Frank CC 7-19 (API: 05-123-25351)



Soil Boring Location MW-05: View Southeast



## Photographic Log

Remediation Investigation  
Frank CC 7-19 (API: 05-123-25351)



Soil Boring Location BKG-02: View West



## Photographic Log

Remediation Investigation  
Frank CC 7-19 (API: 05-123-25351)



Soil Boring Location BKG-03: View Southwest



## Photographic Log

Remediation Investigation  
Frank CC 7-19 (API: 05-123-25351)



Soil Boring Location BKG-04: View South



## Photographic Log

Remediation Investigation  
Frank CC 7-19 (API: 05-123-25351)



Soil Boring Location BKG-05: View East



## Photographic Log

Remediation Investigation  
Frank CC 7-19 (API: 05-123-25351)



Soil Boring Location BKG-06: View Northeast

Boring Number: MW-01				Lat/Long: 40.33001484°N, 104.48446893°W		
Scope: Delineation/Characterization/Monitoring Well Install				Drilling Equipment: AMS Power Probe 9520		
Drilling Method: Direct Push		Drilling Contractor: Alpine Remediation		Driller: Derrick Perez		
Date: 2/24/25	Start Time: 1025	Finish Time: 1040	DTW: 5.66 ft	Total Depth of Boring: 15 ft		
Geologists: Alex Slorby and Holly Tignac						
Depth (ft)	Time	Recovery	Standard Penetration Test Results	USCS Symbol	Material Description	PID Reading (ppm)
0-5	1025	90%	NA	CL	Brown. Clay. Fine grain. Medium plasticity. No odor. No staining.	22.1
5-10	1030	90%	NA	CL	Brown. Sandy clay. Fine to medium grain. Medium plasticity. No odor. No staining. Wet @ 8' bgs.	7.6
10-15	1035	90%	NA	SP/ CL	10'-13': Brown, Sand. Medium grain. Non-plastic.	3.9
					13'-15': Gray. Sandy clay. Fine to medium grain. Medium plasticity. No odor. No staining.	4.2
					MW-01 Monitoring Well Construction Blank Casing: 20"-5' bgs Screen Casing: 5'-15' bgs Bentonite: 20"-4.5' bgs Sand: 4.5'-15' bgs Top of Casing: 20" bgs.	
Samples Collected: 5-7 (3 x 9oz jars)				Comments: Groundwater monitoring well MW-01 Installed.		

Boring Number: MW-02			Lat/Long: 40.32990832°N, 104.48459218°W			
Scope: Delineation/Characterization/Monitoring Well Install			Drilling Equipment: AMS Power Probe 9520			
Drilling Method: Direct Push		Drilling Contractor: Alpine Remediation		Driller: Derrick Perez		
Date: 2/24/25	Start Time: 1115	Finish Time: 1135	DTW: 5.51 ft	Total Depth of Boring: 15 ft		
Geologists: Alex Slorby and Holly Tignac						
Depth (ft)	Time	Recovery	Standard Penetration Test Results	USCS Symbol	Material Description	PID Reading (ppm)
0-5	1120	90%	NA	CL	Brown. Sandy Clay. Fine to medium grain. Medium plasticity. No odor. No staining.	1.7
5-10	1125	90%	NA	CL	Brown. Sandy clay. Fine to medium grain. Medium to high plasticity. No odor. No staining. Wet @ 8' bgs.	1.2
10-15	1130	95%	NA	SP/ CL	10'-13': Brown. Sand. Medium grain. Non Plastic. Wet	0.7
					13'-15': Gray. Clay. Fine grain. Medium plasticity. No odor. No staining.	1.2
MW-02 Monitoring Well Construction Blank Casing: 20"-5' bgs Screen Casing: 5'-15' bgs Bentonite: 20"-4.5' bgs Sand: 4.5'-15' bgs Top of Casing: 20" bgs.						
Samples Collected: 5-7 (3 x 9oz jars)				Comments: Groundwater monitoring well MW-02 Installed.		

Boring Number: MW-03		Lat/Long: 40.33001269°N, 104.48472475°W	
Scope: Delineation/Characterization/Monitoring Well Install		Drilling Equipment: AMS Power Probe 9520	
Drilling Method: Direct Push	Drilling Contractor: Alpine Remediation	Driller: Derrick Perez	
Date: 2/24/25	Start Time: 1150	Finish Time: 1215	DTW: 5.65 ft Total Depth of Boring: 15 ft
Geologists: Alex Slorby and Holly Tignac			

Depth (ft)	Time	Recovery	Standard Penetration Test Results	USCS Symbol	Material Description	PID Reading (ppm)
0-5	1155	90%	NA	CL	Brown. Sandy Clay. Fine to medium grain. Medium plasticity. No odor. No staining.	1.7
5-10	1200	100%	NA	CL	Brown. Sandy clay. Fine to medium grain. Medium plasticity. No odor. No staining. Wet @ 9' bgs.	1.9
10-15	1205	100%	NA	SC/ CL	10'-13': Brown. Clayey Sand. Fine to medium grain. Low Plasticity. Wet 13'-15': Gray. Clay. Fine grain. Medium to high plasticity. No odor. No staining.	1.0 0.5
MW-03 Monitoring Well Construction Blank Casing: 20"-5' bgs Screen Casing: 5'-15' bgs Bentonite: 20"-4.5' bgs Sand: 4.5'-15' bgs Top of Casing: 20" bgs.						

Samples Collected: 5-7 (3 x 9oz jars)	Comments: Groundwater monitoring well MW-03 Installed.
---------------------------------------	--

Boring Number: MW-04			Lat/Long: 40.33007065°N, 104.48459280°W			
Scope: Delineation/Characterization/Monitoring Well Install			Drilling Equipment: Hydro Vacuum and AMS Power Probe 9520			
Drilling Method: HydroVac & Direct Push		Drilling Contractor: Alpine Remediation		Driller: Derrick Perez		
Date: 2/25/25	Start Time: 0925	Finish Time: 1105	DTW: 5.58 ft	Total Depth of Boring: 15 ft		
Geologists: Alex Slorby and Holly Tignac						
Depth (ft)	Time	Recovery	Standard Penetration Test Results	USCS Symbol	Material Description	PID Reading (ppm)
0-7	0940	NA	NA	CL	Hydro Vac to 6' bgs, then hand auger to collect sample. Brown. Sandy Clay. Fine to medium grain. Medium to high plasticity. No odor. No staining. Wet @7' bgs.	0.2
7-8	0950	NA	NA		Potholed	
10-15	1055	100%	NA	CL/ CL	10'-13': Gray. Sandy Clay. Fine to medium grain. Medium Plasticity. 13'-15': Gray/brown. Sandy Clay. Fine to medium grain. Medium plasticity. No odor. No staining.  MW-04 Monitoring Well Construction Blank Casing: 20"-5' bgs Screen Casing: 5'-15' bgs Bentonite: 20"-4.5' bgs Sand: 4.5'-15' bgs Top of Casing: 20" bgs.	1.7
Samples Collected: 6-7 (3 x 9oz jars)				Comments: Groundwater monitoring well MW-04 Installed.		

Boring Number: MW-05			Lat/Long: 40.33000951°N, 104.48459391°W			
Scope: Delineation/Characterization/Monitoring Well Install			Drilling Equipment: Hydro Vacuum and AMS Power Probe 9520			
Drilling Method: HydroVac & Direct Push		Drilling Contractor: Alpine Remediation		Driller: Derrick Perez		
Date: 2/25/25	Start Time: 0955	Finish Time: 1045	DTW: 5.88 ft	Total Depth of Boring: 15 ft		
Geologists: Alex Slorby and Holly Tignac						
Depth (ft)	Time	Recovery	Standard Penetration Test Results	USCS Symbol	Material Description	PID Reading (ppm)
0-7	1010	NA	NA	CL	Hydro Vac to 6' bgs, then hand auger to collect sample. Gray/Brown with black streaks. Clay. Fine grain. Medium plasticity. light degraded petroleum hydrocarbon odor.	1.0
7-8	1020	NA	NA		Wet @7' bgs. Potholed	
10-15	1035	95%	NA	CL/ CL	10'-13': Brown. Sandy Clay. Fine to medium grain. Low Plasticity. 13'-15': Gray with black streaks. Sandy Clay. Fine to medium grain. Medium plasticity. light degraded petroleum hydrocarbon odor.	3.4 2.1
<p>MW-05 Monitoring Well Construction                  Blank Casing: 20"-5' bgs                  Screen Casing: 5'-15' bgs                  Bentonite: 20"-4.5' bgs                  Sand: 4.5'-15' bgs                  Top of Casing: 20" bgs.</p>						
Samples Collected: 6-7 (3 x 9oz jars)				Comments: Groundwater monitoring well MW-05 Installed.		

Boring Number: BKG-02				Lat/Long: 40°19'48.69"N, 104°29'5.33"W		
Scope: Background Characterization				Drilling Equipment: AMS Power Probe 9520		
Drilling Method: Direct Push		Drilling Contractor: Alpine Remediation		Driller: Derrick Perez		
Date: 2/24/25	Start Time: 1230	Finish Time: 1245	DTW: NA	Total Depth of Boring: 10 ft		
Geologists: Alex Slorby and Holly Tignac						
Depth (ft)	Time	Recovery	Standard Penetration Test Results	USCS Symbol	Material Description	PID Reading (ppm)
0-5	1235	90%	NA	CL	Brown/Gray. Sandy Clay. Fine to medium grain. Medium to high plasticity. No odor. No staining.	0.5
5-10	1240	80%	NA	CL	Brown. Sandy clay. Fine to medium grain. Medium plasticity. No odor. No staining.	1.6
Samples Collected: 5-7 (3 x 9oz jars)						

Boring Number: BKG-03		Lat/Long: 40°19'47.97"N, 104°29'5.55"W		
Scope: Background Characterization		Drilling Equipment: AMS Power Probe 9520		
Drilling Method: Direct Push	Drilling Contractor: Alpine Remediation		Driller: Derrick Perez	
Date: 2/24/25	Start Time: 1245	Finish Time: 1255	DTW: NA	Total Depth of Boring: 10 ft
Geologists: Alex Slorby and Holly Tignac				

Depth (ft)	Time	Recovery	Standard Penetration Test Results	USCS Symbol	Material Description	PID Reading (ppm)
0-5	1245	95%	NA	CL	Brown. Sandy Clay. Fine to medium grain. Medium plasticity. No odor. No staining.	0.4
5-10	1250	80%	NA	CL	Brown. Sandy clay. Fine to medium grain. High plasticity. No odor. No staining. Wet @ 9' bgs.	0.5

Samples Collected: 6-8' (3 x 9oz jars)

Boring Number: BKG-04			Lat/Long: 40°19'47.23"N, 104°29'4.56"W			
Scope: Background Characterization			Drilling Equipment: AMS Power Probe 9520			
Drilling Method: Direct Push		Drilling Contractor: Alpine Remediation		Driller: Derrick Perez		
Date: 2/24/25	Start Time: 1300	Finish Time: 1315	DTW: NA	Total Depth of Boring: 10 ft		
Geologists: Alex Slorby and Holly Tignac						
Depth (ft)	Time	Recovery	Standard Penetration Test Results	USCS Symbol	Material Description	PID Reading (ppm)
0-5	1305	90%	NA	CL	Brown. Sandy Clay. Fine to medium grain. High plasticity. No odor. No staining.	1.7
5-10	1310	80%	NA	CL	Brown. Sandy clay. Fine to medium grain. Medium plasticity. No odor. No staining. Wet @ 7' bgs.	0.6
Samples Collected: 6-8' (3 x 9oz jars)						

Boring Number: BKG-05				Lat/Long: 40°19'47.96"N, 104°29'3.53"W		
Scope: Background Characterization				Drilling Equipment: AMS Power Probe 9520		
Drilling Method: Direct Push		Drilling Contractor: Alpine Remediation		Driller: Derrick Perez		
Date: 2/24/25	Start Time: 1310	Finish Time: 1320	DTW: NA	Total Depth of Boring: 10 ft		
Geologists: Alex Slorby and Holly Tignac						
Depth (ft)	Time	Recovery	Standard Penetration Test Results	USCS Symbol	Material Description	PID Reading (ppm)
0-5	1315	90%	NA	CL	Brown. Sandy Clay. Fine to medium grain. Medium to high plasticity. No odor. No staining.	2.1
5-10	1320	90%	NA	CL	Brown. Sandy clay. Fine grain. High plasticity. No odor. No staining. Wet @ 8' bgs.	1.1
Samples Collected: 6-8' (3 x 9oz jars)						

Boring Number: BKG-06		Lat/Long: 40°19'48.68"N, 104°29'3.75"W			
Scope: Background Characterization		Drilling Equipment: AMS Power Probe 9520			
Drilling Method: Direct Push		Drilling Contractor: Alpine Remediation		Driller: Derrick Perez	
Date: 2/24/25	Start Time: 1320	Finish Time: 1335	DTW: NA	Total Depth of Boring: 10 ft	
Geologists: Alex Slorby and Holly Tignac					

Depth (ft)	Time	Recovery	Standard Penetration Test Results	USCS Symbol	Material Description	PID Reading (ppm)
0-5	1325	90%	NA	CL	Brown. Clay. Fine grain. High plasticity. No odor. No staining.	1.9
5-10	1330	60%	NA	CL	Brown. Sandy clay. Fine to medium grain. Medium plasticity. No odor. No staining. Wet @ 8.5' bgs.	2.3

Samples Collected: 7-8.5' (3 x 9oz jars)