



# Wellbore Schematic Input Report

Well Name: SANDAU & BARTELS 25-13F

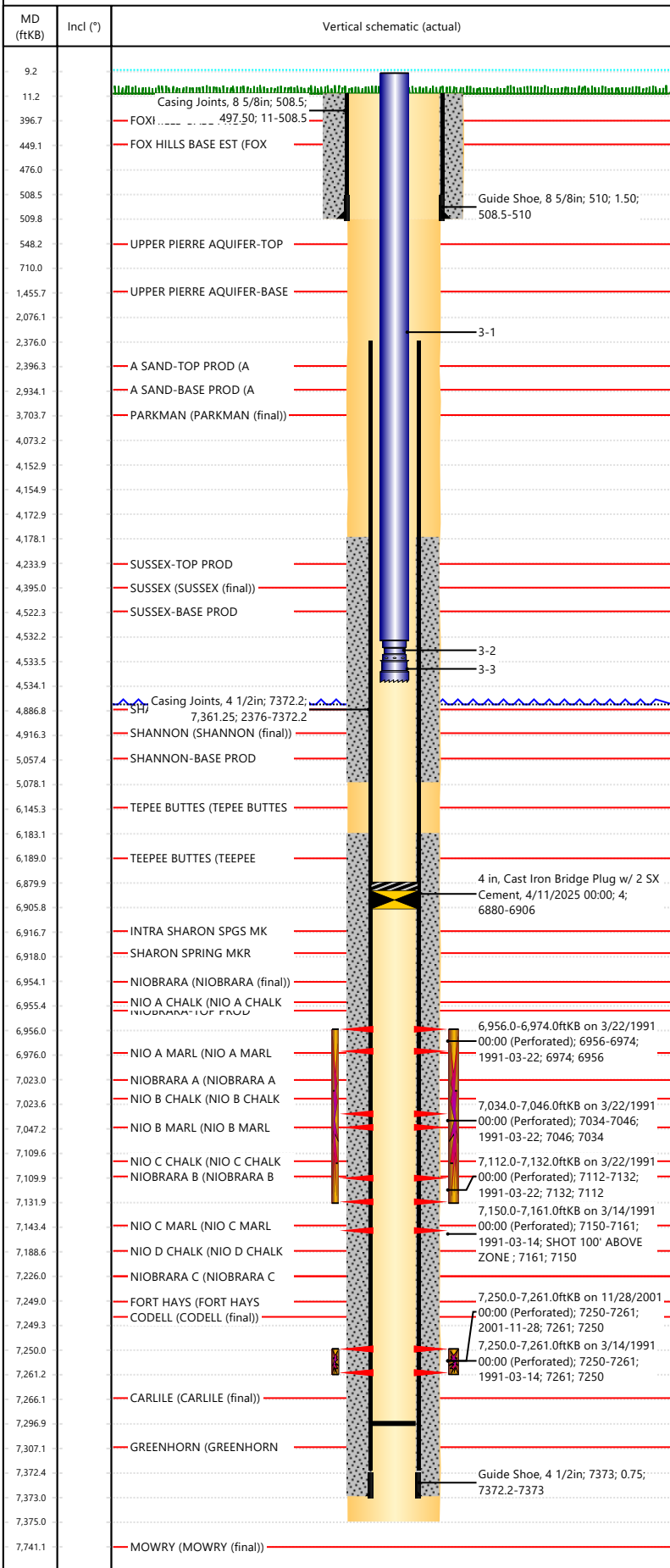
Original Hole [Land]		Well Header				
MD (ftKB) Incl (°) Vertical schematic (actual)		Surface UWI 0512314924		Asset Team	Production Tree Location Land	
		Original RKB Elevation (ft) 4,804.00		Original KB to Ground (ft) 11.00	Original Spud Date 3/6/1991	Abandon Date
		Range		Well Sub-Status TA	High Pressure N	
		Directions To Well WCR 37 & WCR 40, WEST 0.9, NORTH 0.1 INTO		Latitude (°) 40.277781968	Longitude (°) -104.732435692	
		Comment TD DISCREPANCY: DRL RPTS, ST RPTS & OPEN HOLE LOGS = 7375, RE-FRAC RPT & TRI-FRAC RPT = 7575. CD PERFS @ 7150'-7160', SHOT 100' HIGH OUT OF ZONE. CD REFRAC 1ST ATTEMPT SHUT DOWN, FOUND ROCKS IN SAND. STATE SHOWS SHUT IN SINCE APR 2017.				
		<b>Congressional Location</b>				
		Quarter 3 SW	Quarter 4 SW	Section 25	Township 4	Township N/S Dir N
		Range 66		Range E/W Dir W		
		<b>Rig Operator</b>				
		Rig/Unit Supervisor RAYMUNDO ESPARZA				
		<b>Daily Cost Summary</b>				
		Sum of Field Est (Cost) 0				
		<b>Wellbore Plug Back Total Depths</b>				
		Date	PBTD (ftKB)	Method	Com	
		4/1/2014	7,297	TUBING TALLY		
<b>Wellbore Sections</b>						
Section Des	Hole Size (in)	Top Depth (ftKB)	Btm Depth (ftKB)			
SURFACE	12 1/4	11.0	510.0			
PRODUCTION	7 7/8	510.0	7,375.0			
<b>Zone Statuses</b>						
Zone Name	Status Date	Status				
CODELL	2/20/2007	PR				
NIOBRARA	4/1/1991	PR				
<b>Casing Strings</b>						
<b>Surface, Actual, 510ftKB</b>						
Casing Description	Run Date	OD (in)	WV/Len (lb/ft)	Grade		
Surface	3/7/1991	8 5/8	23.00	M-50		
Top Depth (ftKB)	Set Depth (ftKB)					
11	510					
<b>Production Casing, Actual, 7373ftKB</b>						
Casing Description	Run Date	OD (in)	WV/Len (lb/ft)	Grade		
Production Casing	3/11/1991	4 1/2	11.60	M-75		
Top Depth (ftKB)	Set Depth (ftKB)					
11	7373					
<b>Cement</b>						
Des	Start Date	Top (ftKB)	Btm (ftKB)			
SURFACE CASING CEMENT	3/7/1991	11.0	510.0			
PRODUCTION CASING CEMENT	3/11/1991	4,178.0	5,078.0			
PRODUCTION CASING CEMENT	3/11/1991	6,183.0	7,373.0			
<b>Proposed Cement</b>						
Des	Top (ftKB)	Btm (ftKB)				
A Sand Plug	2,076.0	2,376.0				
Surface Plug	11.0	710.0				
Sussex squeeze	4,073.0	4,173.0				
<b>Tubing Strings</b>						
Tubing Description	Run Date	String Make	OD (in)	Wt (lb/ft)		
Tubing - Production	4/11/2025	2 3/8	1.995	4.70		
Grade	Len (ft)	Set Depth				
J-55	4,524.70					
<b>Tubing Components</b>						
Item Des	OD (in)	Wt (lb/ft)	Grade	Jts		
Tubing	2 3/8	4.70	J-55	1		
Pump Seating Nipple	2			1		
Notched collar	2 3/8			140		
Len (ft)	Btm (ftKB)	Btm (TVD) (ftKB)				
4,523.00	4,532.3					
1.10	4,533.4					
0.60	4,534.0					
<b>Other In Hole</b>						
Run Date	Des	Make	OD (in)	Top (ftKB)		
4/11/2025	Cast Iron Bridge Plug w/ 2 SX Cement		4	6,880.0		
Btm (ftKB)						
6,906.0						
<b>Proposed Other In Hole</b>						
Des	Make	OD (in)	Top (ftKB)	Btm (ftKB)		
Cement Retainer		4	4,153.0	4,155.0		



# Wellbore Schematic Input Report

Well Name: SANDAU & BARTELS 25-13F

### Original Hole [Land]



Date	Type	Depth Top (MD) (ftKB)	Btm (ftKB)
3/11/1991	COMPENSATED DENSITY	3,720	7,350.0
3/11/1991	INDUCTION	450	7,374.0
3/13/1991	CBL/CCL/GR	5,500	7,290.0
3/16/2012	GYRO	10	7,200.0

Linked Zone	Sum of Entered Shot Total	Top (ftKB)	Btm (ftKB)	Date
NIOBRARA, Original Hole	10	6,956.0	6,974.0	3/22/1991
NIOBRARA, Original Hole	10	7,034.0	7,046.0	3/22/1991
NIOBRARA, Original Hole	8	7,112.0	7,132.0	3/22/1991
CODELL, Original Hole	44	7,150.0	7,161.0	3/14/1991
CODELL, Original Hole	44	7,250.0	7,261.0	3/14/1991
CODELL, Original Hole	60	7,250.0	7,261.0	11/28/2001
<b>Total</b>	<b>176</b>			

Linked Zone	Sum of Entered Shot Total	Top Depth (ftKB)	Bottom Depth (ftKB)	Date
	0	4,073.0	4,073.0	12/9/2024
	0	4,173.0	4,173.0	12/9/2024
<b>Total</b>	<b>0</b>			

Supply Item Des	Job Supply Type	Unit	Job Category	Total Req	Total Co	Total Res
Municipal Fresh Water	Water	bbbl	Abandon	390.0	190.0	80.0

Field Est (Cost)	Description	Note
1,200	Contract Labor	
1,200	Contract Labor	
7,804	Rig Daywork	
6,000	Rig Daywork	
150	Equipment Rentals	TRAILER
150	Equipment Rentals	TRAILER
200	Equipment Rentals	TOILET
400	Equipment Rentals	TRAILER DELIVERY