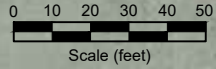


Re-Sample for Full Table 915-1 Suite

Re-Sample for Full Table 915-1 Suite

04/11/2022		04/11/2022		04/11/2022	
TB-SS-02 (3.5')		TB-SS-02 (3.5')		TB-SS-02 (3.5')	
ACE	0.000406	B	<0.002	SAR	0.124
Ant	0.00102	T	<0.002	pH	7.95
BaA	0.00402	E	<0.002	EC	0.503
BbF	0.0036	X	<0.002	B	0.600
BbP	0.002	124TMB	<0.002		
BaP	0.00312	135TMB	<0.002		
Chr	0.0044	N	<0.0007		
DBahAnt	<0.0007	G	<0.200		
FLU	0.136	D	<25.0		
FL	0.000467	O	<100		
1123cdPY	0.00141				
1MN	<0.0007				
2MN	<0.0007				
PY	0.011				

12/04/2023		12/19/2024		12/04/2023		12/19/2024		12/04/2023		12/19/2024	
FL02 (5')		FL02 SF1(2)		FL02 (5')		FL02 SF1(2)		FL02 (5')		FL02 SF1(2)	
ACE	<0.0050	ACE	<0.0050	B	<0.0020	B	<0.0020	As	9.88	As	7.24
Ant	<0.0050	Ant	<0.0050	T	<0.0050	T	<0.0050	SA	848	SA	398
BaA	<0.0050	BaA	<0.0050	E	<0.0050	E	<0.0050	SO	8.798	SO	0.889
BbF	<0.0050	BbF	<0.0050	X	<0.010	X	<0.010	SU	5.2	SU	7.02
BbP	<0.0050	BbP	<0.0050	124TMB	<0.0050	124TMB	<0.0050	FB	6.81	FB	13.7
Chr	<0.0050	Chr	<0.0050	135TMB	<0.0050	135TMB	<0.0050	NI	18.2	NI	5.09
DBahAnt	<0.0050	DBahAnt	<0.0050	G	<0.50	G	<0.50	SE	<0.260	SE	4.807
FLU	<0.0050	FLU	<0.0050	D	<50	D	<50	AG	0.0443	AG	0.0430
FL	<0.0050	FL	<0.0050	O	<50	O	<50	CR(VI)	<0.30	CR(VI)	<0.30
1123cdPY	<0.0050	1123cdPY	<0.0050					Z	19.8	Z	36.7
1MN	<0.0050	1MN	<0.0050								
2MN	<0.0050	2MN	<0.0050								
PY	<0.0050	PY	<0.0050								



LEGEND

- Wellhead Location
- Soil Sample Location
- Above Ground Storage Tank
- Former Facility
- Fence Line
- Containment Berm
- Containment Wall
- Former Flow Line

01/13/2022		01/13/2022		01/13/2022	
WH-FS-01 (6')		WH-FS-01 (6')		WH-FS-01 (6')	
ACE	0.000711	ACENAPHTHENE (mg/kg)			
Ant	<0.0005	ANTHRACENE (mg/kg)			
BaA	<0.0005	BENZO (A) ANTHRACENE (mg/kg)			
BbF	<0.0005	BENZO (B) FLUORANTHENE (mg/kg)			
BbP	<0.0005	BENZO (K) FLUORANTHENE (mg/kg)			
Chr	<0.0005	BENZO (A) PYRENE (mg/kg)			
DBahAnt	<0.0005	CHRYSENE (mg/kg)			
FLU	<0.0005	DIBENZ (A,H) ANTHRACENE (mg/kg)			
FL	0.00112	FLUORANTHENE (mg/kg)			
1123cdPY	<0.0005	FLUORENE (mg/kg)			
1MN	0.00184	INDENO (1,2,3-CD) PYRENE (mg/kg)			
2MN	0.00327	1-METHYLNAPHTHALENE (mg/kg)			
PY	0.000726	2-METHYLNAPHTHALENE (mg/kg)			
		PYRENE (mg/kg)			

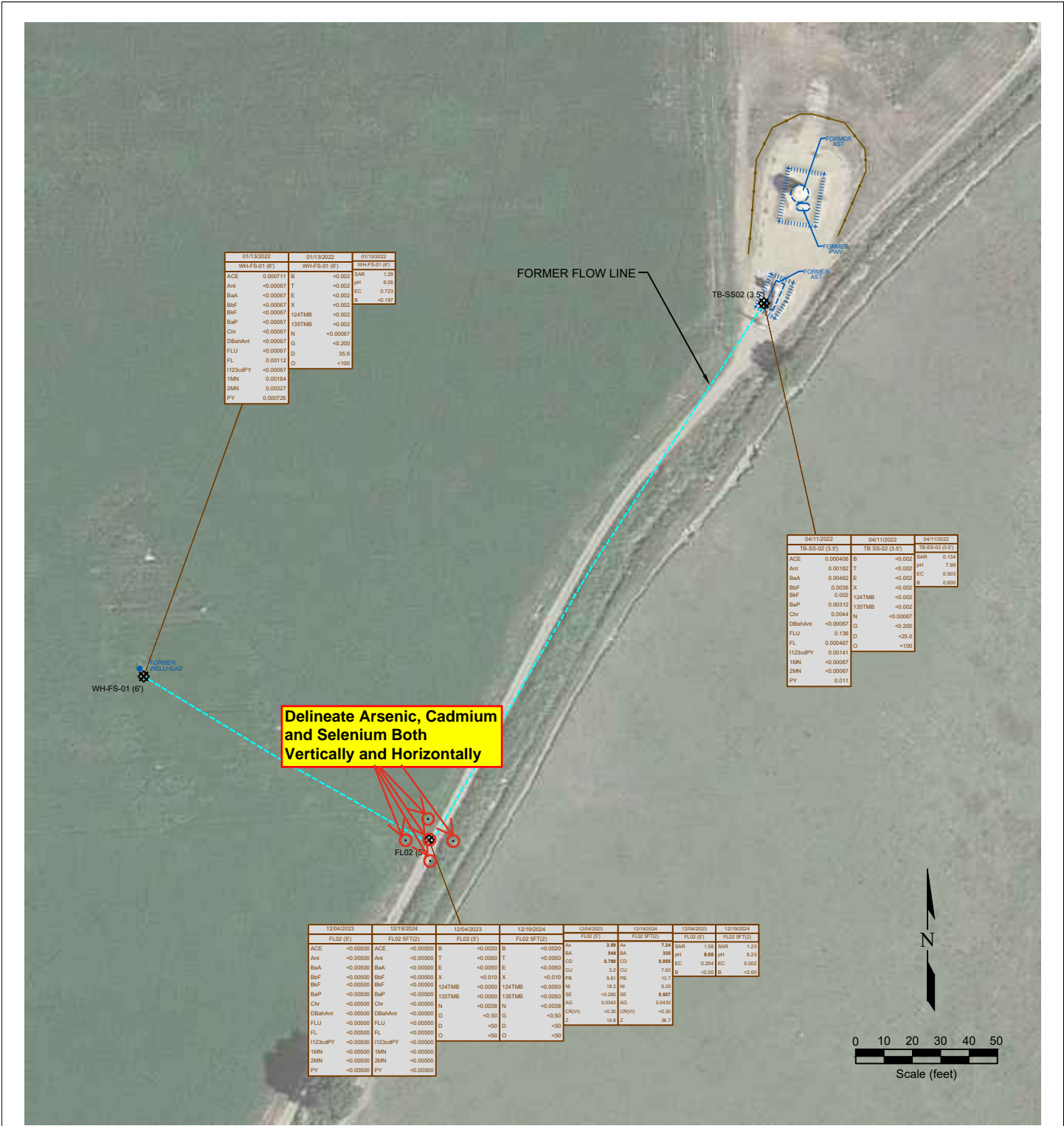
01/13/2022		01/13/2022		01/13/2022	
WH-FS-01 (6')		WH-FS-01 (6')		WH-FS-01 (6')	
B	<0.002	DATE SAMPLED			
T	<0.002	SAMPLE ID and DEPTH (ft)			
E	<0.002				
X	<0.002				
124TMB	<0.002				
135TMB	<0.002				
N	<0.0007				
G	<0.200				
D	35.6				
O	<100				

01/13/2022		01/13/2022		01/13/2022	
FL02 (5')		FL02 (5')		FL02 (5')	
As	9.88	ARSENIC (mg/kg)			
SA	848	BARIUM (mg/kg)			
SO	8.798	CADMIUM (mg/kg)			
SU	5.2	COPPER (mg/kg)			
FB	6.81	LEAD (mg/kg)			
NI	18.2	NICKEL (mg/kg)			
SE	<0.260	SELENIUM (mg/kg)			
AG	0.0443	SILVER (mg/kg)			
CR(VI)	<0.30	HEXAVALENT CHROMIUM (mg/kg)			
Z	19.8	ZINC (mg/kg)			

Figure 1
Proposed Site Investigation Plan

Noble Energy, Inc. ~ Howard A 27-5
 SWNW, Sec 27, T6N, R64W, 6th P.M.
 Weld County, Colorado
 40.548965 ° -104.542988 °

Project No. CO23-315	API # 05-123-23474	Facility #
Date 3/10/25	Remediation # 20352	Filename 23315Q

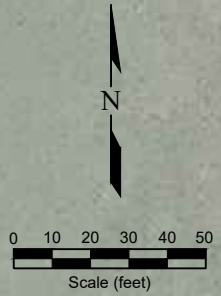


01/13/2022		01/13/2022		01/13/2022	
WH-FS-01 (6')		WH-FS-01 (6')		WH-FS-01 (6')	
ACE	0.000711	B	<0.002	SAR	1.26
Ant	<0.0005	T	<0.002	pH	8.06
BaA	<0.0005	E	<0.002	EC	0.723
BbF	<0.0005	X	<0.002	B	<0.197
BbP	<0.0005	124TMB	<0.002		
BbP	<0.0005	135TMB	<0.002		
Chr	<0.0005	N	<0.0007		
DBahAnt	<0.0005	G	<0.200		
FLU	<0.0005	D	35.6		
FL	0.00112	O	<100		
1123cdPY	<0.0005				
MN	0.00184				
2MN	0.00327				
PY	0.000726				

04/11/2022		04/11/2022		04/11/2022	
TB-SS-02 (3.5')		TB-SS-02 (3.5')		TB-SS-02 (3.5')	
ACE	0.000406	B	<0.002	SAR	0.124
Ant	0.00102	T	<0.002	pH	7.95
BaA	0.00482	E	<0.002	EC	0.503
BbF	0.0036	X	<0.002	B	0.603
BbP	0.002	124TMB	<0.002		
BbP	0.00312	135TMB	<0.002		
Chr	0.0044	N	<0.0007		
DBahAnt	<0.0007	G	<0.200		
FLU	0.136	D	<25.0		
FL	0.000487	O	<100		
1123cdPY	0.00141				
MN	<0.0007				
2MN	<0.0007				
PY	0.011				

12/04/2023		12/19/2024		12/04/2023		12/19/2024		12/04/2023		12/19/2024	
FL02 (5')		FL02 SF1(2)		FL02 (5')		FL02 SF1(2)		FL02 (5')		FL02 SF1(2)	
ACE	<0.0050	ACE	<0.0050	B	<0.0020	B	<0.0020	SA	9.88	SA	7.23
Ant	<0.0050	Ant	<0.0050	T	<0.0050	T	<0.0050	SB	4.48	SB	1.23
BaA	<0.0050	BaA	<0.0050	E	<0.0050	E	<0.0050	SD	0.798	SD	0.823
BbF	<0.0050	BbF	<0.0050	X	<0.010	X	<0.010	SE	5.2	SE	0.552
BbP	<0.0050	BbP	<0.0050	124TMB	<0.0050	124TMB	<0.0050	SF	6.81	SF	13.7
BbP	<0.0050	BbP	<0.0050	135TMB	<0.0050	135TMB	<0.0050	SH	18.2	SH	5.09
Chr	<0.0050	Chr	<0.0050	N	<0.0038	N	<0.0038	SI	<0.260	SI	4.897
DBahAnt	<0.0050	DBahAnt	<0.0050	G	<0.50	G	<0.50	SO	0.043	SO	0.430
FLU	<0.0050	FLU	<0.0050	D	<50	D	<50	SR(V)	<0.30	SR(V)	<0.30
FL	<0.0050	FL	<0.0050	O	<50	O	<50	Z	19.8	Z	36.7
1123cdPY	<0.0050	1123cdPY	<0.0050								
MN	<0.0050	MN	<0.0050								
2MN	<0.0050	2MN	<0.0050								
PY	<0.0050	PY	<0.0050								

Delineate Arsenic, Cadmium and Selenium Both Vertically and Horizontally



LEGEND

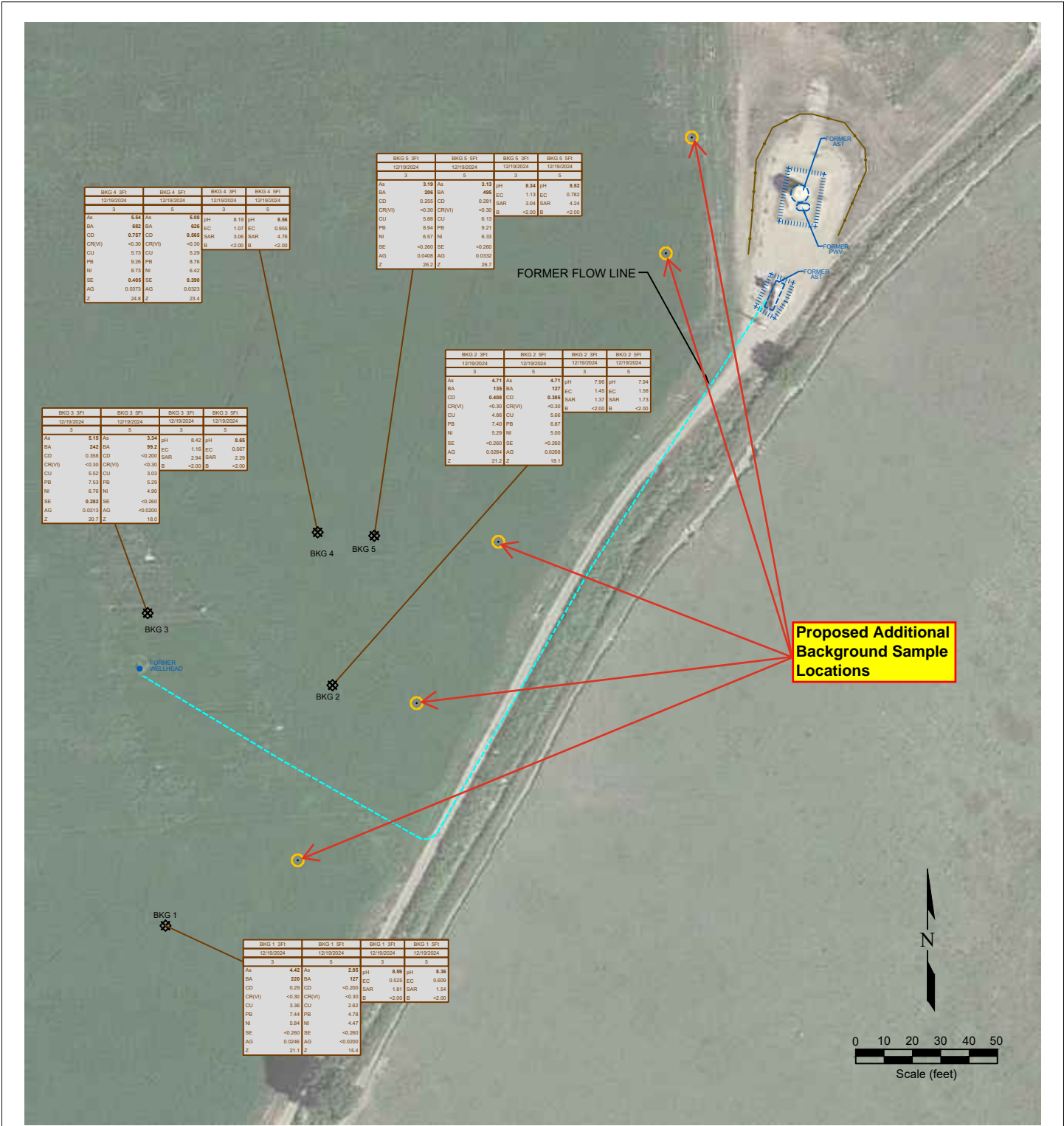
- WELLHEAD LOCATION
- ⊗ SOIL SAMPLE LOCATION
- ABOVE GROUND STORAGE TANK
- FORMER FACILITY
- FENCE LINE
- ▬ CONTAINMENT BERM
- ▬ CONTAINMENT WALL
- FORMER FLOW LINE

01/13/2022		01/13/2022		01/13/2022	
WH-FS-01 (6')		WH-FS-01 (6')		WH-FS-01 (6')	
ACE	0.000711	ACENAPHTHENE (mg/kg)			
Ant	<0.0005	ANTHRACENE (mg/kg)			
BaA	<0.0005	BENZO (A) ANTHRACENE (mg/kg)			
BbF	<0.0005	BENZO (B) FLUORANTHENE (mg/kg)			
BbP	<0.0005	BENZO (K) FLUORANTHENE (mg/kg)			
BbP	<0.0005	BENZO (A) PYRENE (mg/kg)			
Chr	<0.0005	CHRYSENE (mg/kg)			
DBahAnt	<0.0005	DIBENZ (A,H) ANTHRACENE (mg/kg)			
FLU	<0.0005	FLUORANTHENE (mg/kg)			
FL	0.00112	FLUORENE (mg/kg)			
1123cdPY	<0.0005	INDENO (1,2,3-CD) PYRENE (mg/kg)			
MN	0.00184	1-METHYLNAPHTHALENE (mg/kg)			
2MN	0.00327	2-METHYLNAPHTHALENE (mg/kg)			
PY	0.000726	PYRENE (mg/kg)			

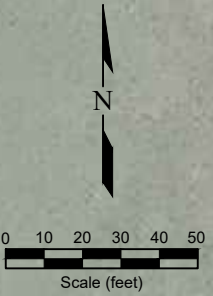
01/13/2022		01/13/2022		01/13/2022	
WH-FS-01 (6')		WH-FS-01 (6')		WH-FS-01 (6')	
SAR	1.26	ARSENIC (mg/kg)			
pH	8.06	BARIUM (mg/kg)			
EC	0.723	CADMIUM (mg/kg)			
B	<0.197	COPPER (mg/kg)			
		LEAD (mg/kg)			
		NICKEL (mg/kg)			
		SILVER (mg/kg)			
		HEXAVALENT CHROMIUM (mg/kg)			
		ZINC (mg/kg)			

Figure 2
PROPOSED ARSENIC, CADMIUM AND SELENIUM DELINEATION BORES
 Noble Energy, Inc. ~ Howard A 27-5
 SWNW, Sec 27, T6N, R64W, 6th P.M.
 Weld County, Colorado
 40.548965 ° -104.542988 °

Project No. CO23-315	API # 05-123-23474	Facility #
Date 3/10/25	Remediation # 20352	Filename 23315Q



Proposed Additional Background Sample Locations



LEGEND

- WELLHEAD LOCATION
- ⊗ SOIL SAMPLE LOCATION
- ABOVE GROUND STORAGE TANK
- FORMER FACILITY
- FENCE LINE
- CONTAINMENT BERM
- CONTAINMENT WALL
- FORMER FLOW LINE

SAMPLE	SAMPLE ID	SAMPLE	SAMPLE ID
DATE	DATE SAMPLED	DATE	DATE SAMPLED
DEPTH	DEPTH (R)	DEPTH	DEPTH (R)
As	<-0.01	ARSENIC (mg/kg)	
BA	<-0.01	BARIUM (mg/kg)	
CD	<-0.01	CADMIUM (mg/kg)	
CR(V)	<-0.01	CHROMIUM (mg/kg)	
CU	<-0.01	COPPER (mg/kg)	
PB	<-0.01	LEAD (mg/kg)	
NI	<-0.01	NICKEL (mg/kg)	
SE	<-0.01	SELENIUM (mg/kg)	
AG	<-0.01	SILVER (mg/kg)	
Z	<-0.01	ZINC (mg/kg)	

Figure 3

PROPOSED ADDITIONAL BACKGROUND LOCATIONS

Noble Energy, Inc. ~ Howard A 27-5
 SWNW, Sec 27, T6N, R64W, 6th P.M.
 Weld County, Colorado
 40.458965 ° -104.542988 °

Project No. CO23-315	API # 05-123-23474	Facility #	
Date 3/10/25	Remediation # 20352	Filename 23315Q	