

LEGEND

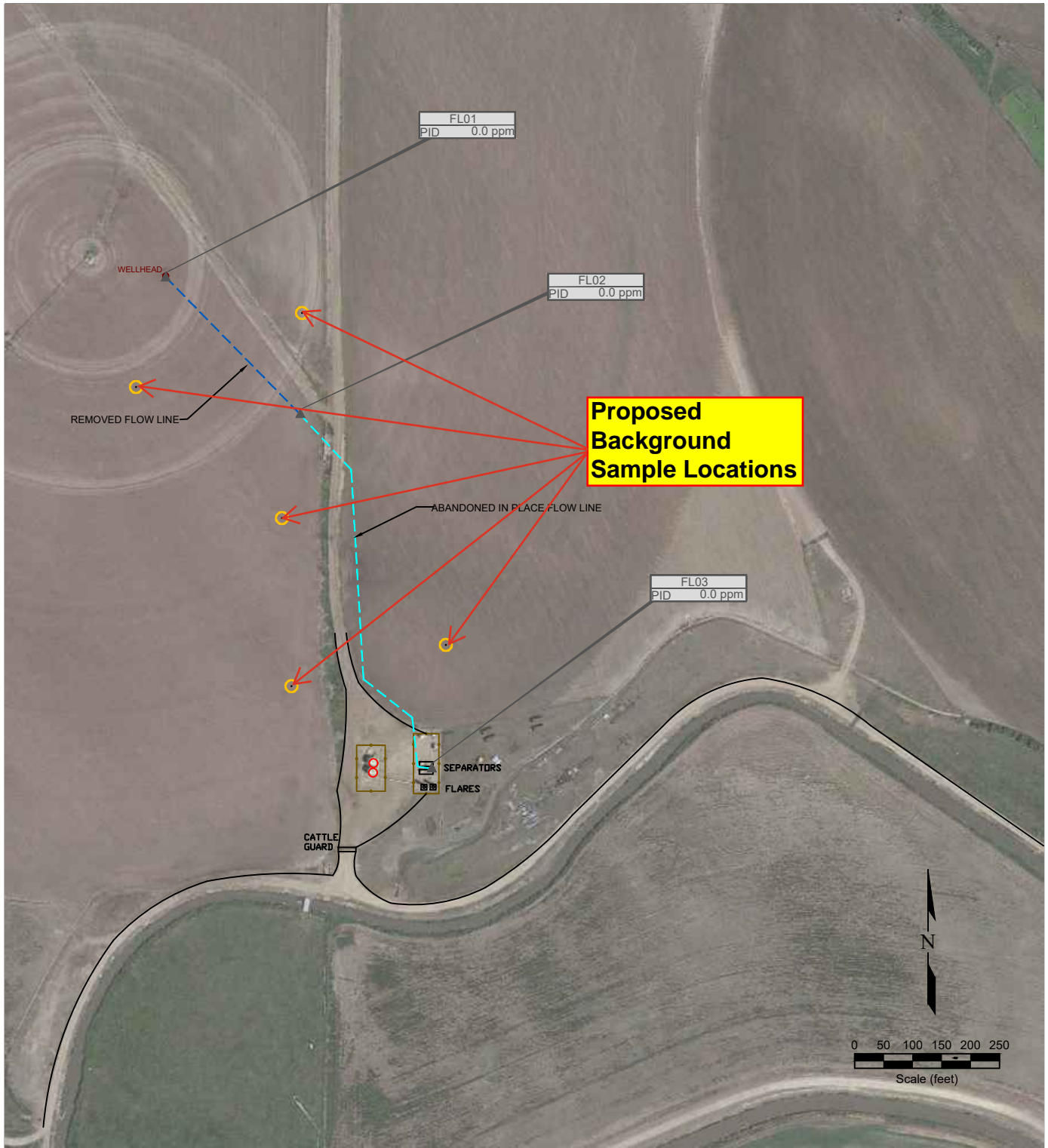
- WELL HEAD LOCATION
- ▲ PID READING LOCATION
- ASU ABOVE GROUND STORAGE TANK
- BUILDING BUILDING
- FORMER FORMER FACILITY
- CONTAINMENT BERM
- FLOW LINE REMOVED
- ABANDONED IN PLACE
- FENCE LINE

Figure 1
PROPOSED SITE INVESTIGATION PLAN
NOBLE ENERGY INC~ SHABLE 21-20

NENW Sec. 20, T4N, R65W, 6th PM
 Weld County, Colorado
 40.301625°, -104.687906°

Project No. C023-044	API # 05-123-22446	Facility #
Date 4/12/23	Remediation # 23892	Filename 23044Q





LEGEND

- WELL HEAD LOCATION
- ▲ PID READING LOCATION
- ASST ABOVE GROUND STORAGE TANK
- BUILDING BUILDING
- FORMER FORMER FACILITY
- CONTAINMENT BERM
- FLOW LINE REMOVED
- ABANDONED IN PLACE
- FENCE LINE

Figure 2
PROPOSED BACKGROUND LOCATIONS
NOBLE ENERGY INC~ SHABLE 21-20

NENW Sec. 20, T4N, R65W, 6th PM
 Weld County, Colorado
 40.301625°, -104.687906°

Project No. C023-044	API # 05-123-22446	Facility #
Date 4/12/23	Remediation # 23892	Filename 23044Q

