

TEP Rocky Mountain LLC
Federal RGU 23-6-297
Location ID: 335602

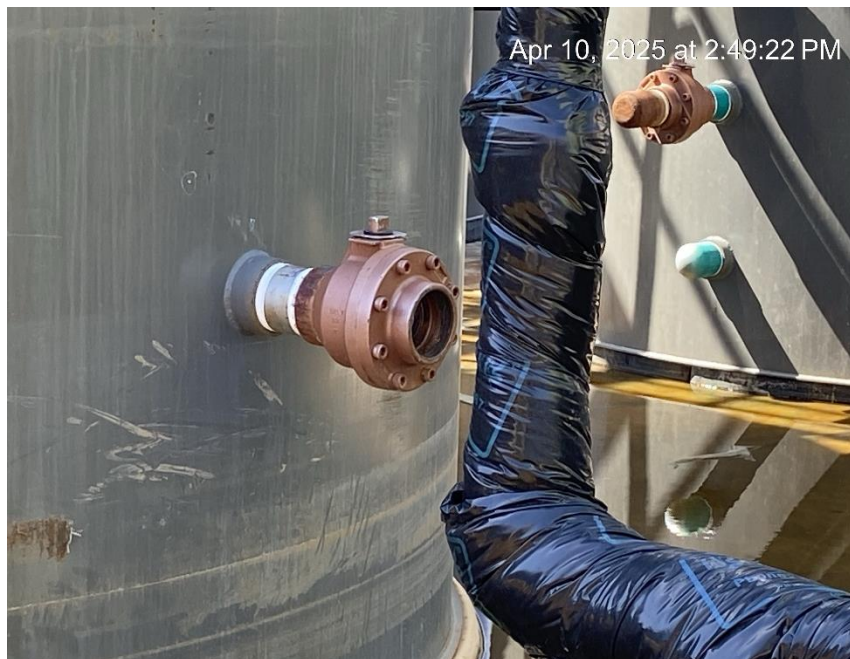


Open end tank valve



Open end tank valve

TEP Rocky Mountain LLC
Federal RGU 23-6-297
Location ID: 335602



Open end tank valve



Unused equipment

TEP Rocky Mountain LLC
Federal RGU 23-6-297
Location ID: 335602



Unused equipment



Containment damage

TEP Rocky Mountain LLC
Federal RGU 23-6-297
Location ID: 335602



Unused equipment



Unused equipment

**TEP Rocky Mountain LLC
Federal RGU 23-6-297
Location ID: 335602**



Pad prepped for additional wells



Well pad from Northeast corner