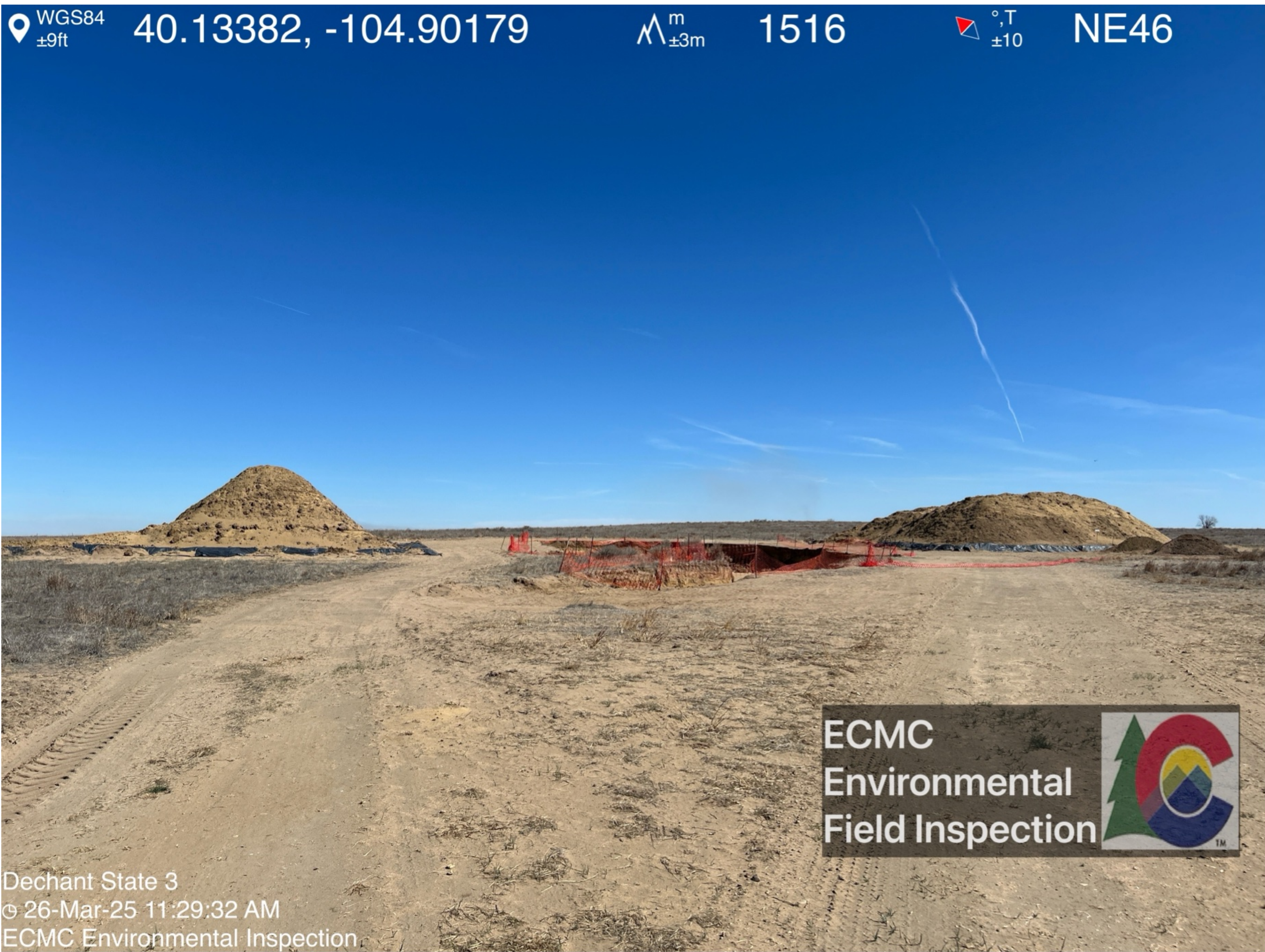


Open construction and soil stockpiles are visible on location.



Orange construction fencing has been installed around portions of the excavation, but has fallen and does not fully encompass the excavation perimeter.





Two small soil stockpiles labeled "Clean" are visible immediately adjacent to stockpiled oily waste labeled "contaminated". The "clean" soil appeared to be mixed with topsoil and vegetation from the surrounding area. A portion of the liner of the soil stockpile marked contaminated is visible in the left side of the picture.



Oily waste labeled "contaminated" is stockpiled on location. The majority of oily waste is stockpiled on liner; however, oily waste has spilled and spread outside of the lined area. Asymmetrical ripples are visible.

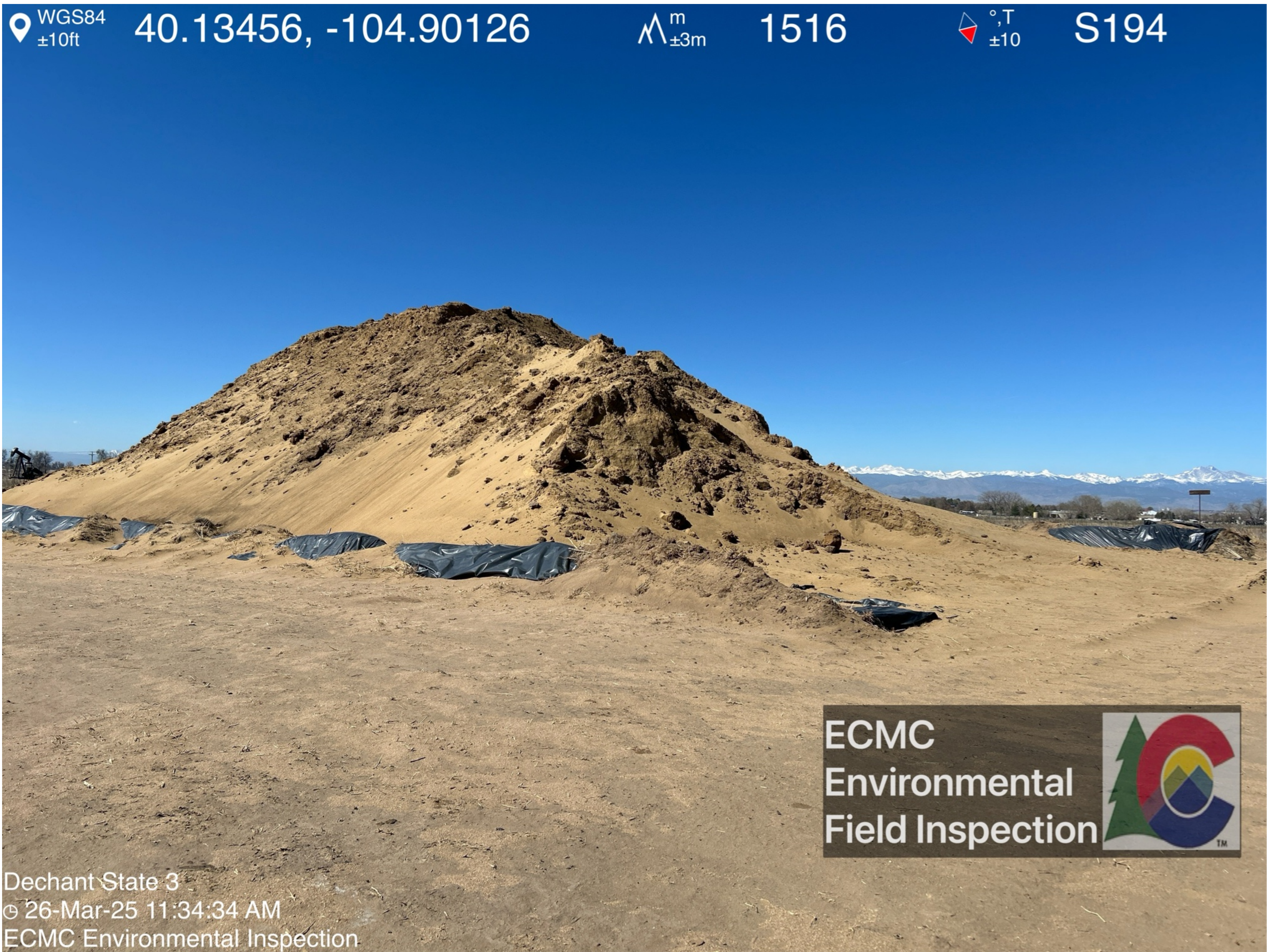




Oily waste labeled "contaminated" is stockpiled on location. The majority of oily waste is stockpiled on liner; however, the liner is discontinuous and oily waste has spread outside of the lined area.

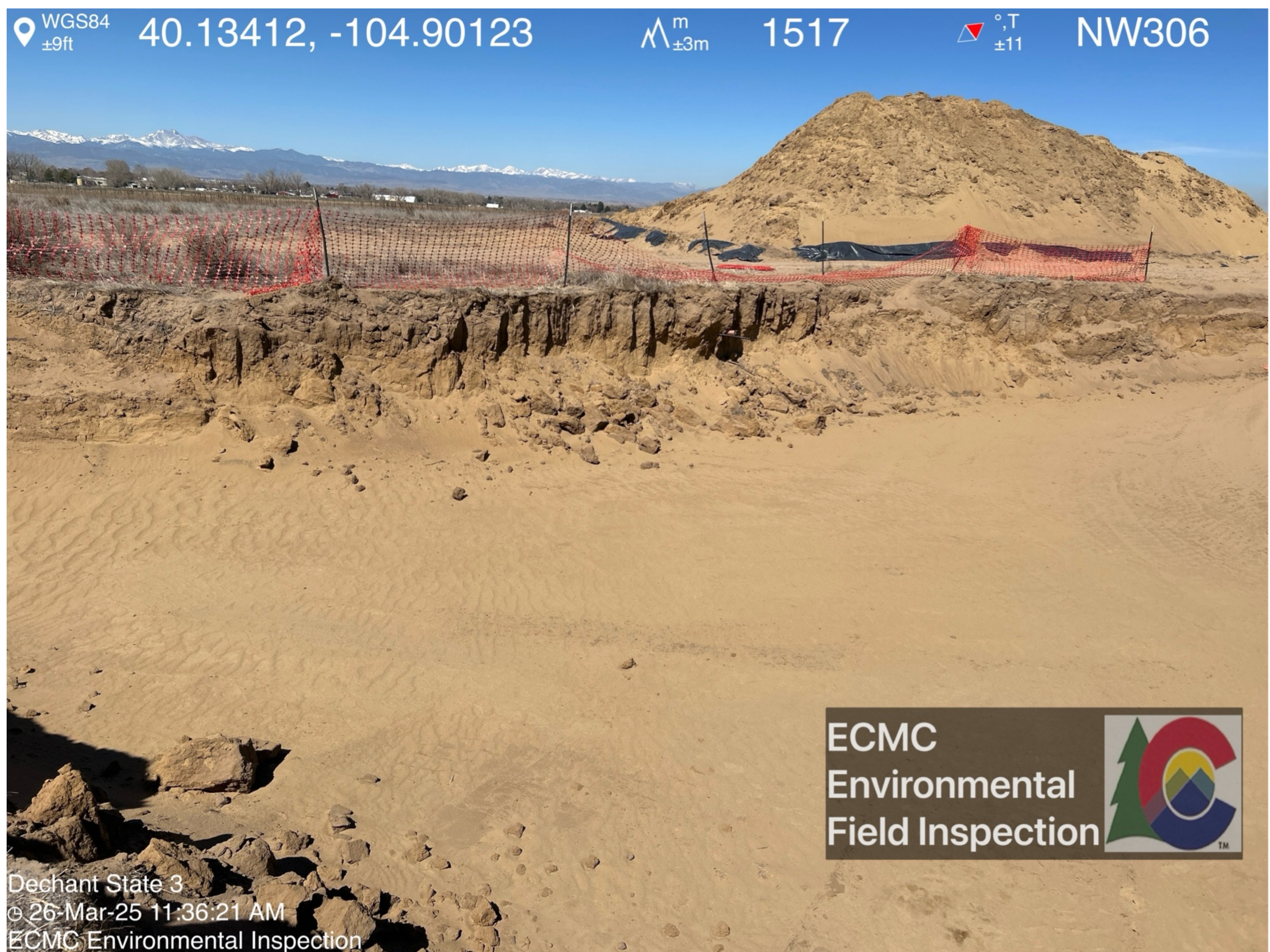


Oily waste labeled "contaminated" is stockpiled in a second area on location. The majority of oily waste is stockpiled on liner; however, the perimeter berm surrounding the stockpile has been driven over and oily waste has spilled and spread outside of the lined area.

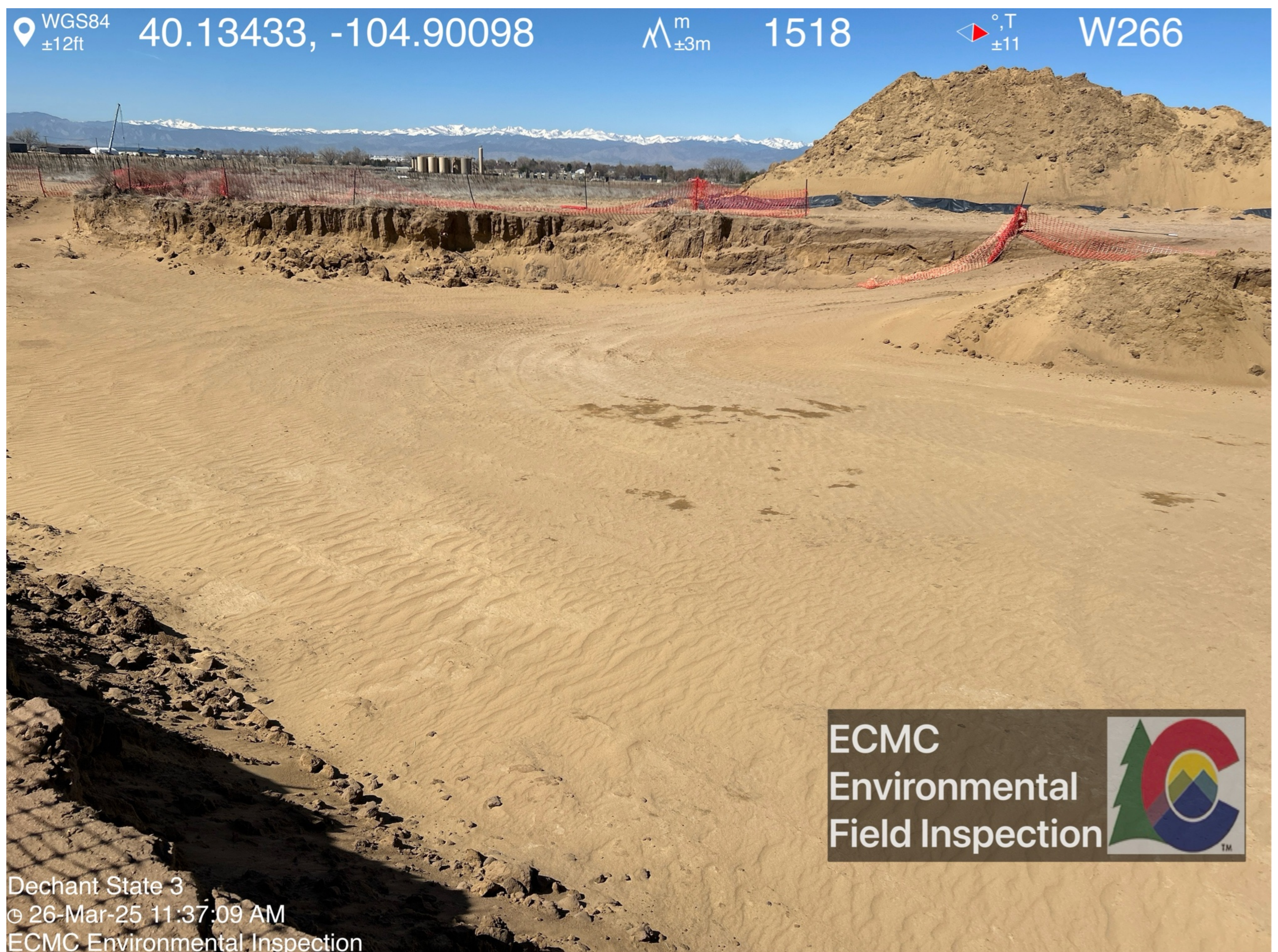




Soil has sloughed off excavation sidewalls. Asymmetrical ripples are visible.

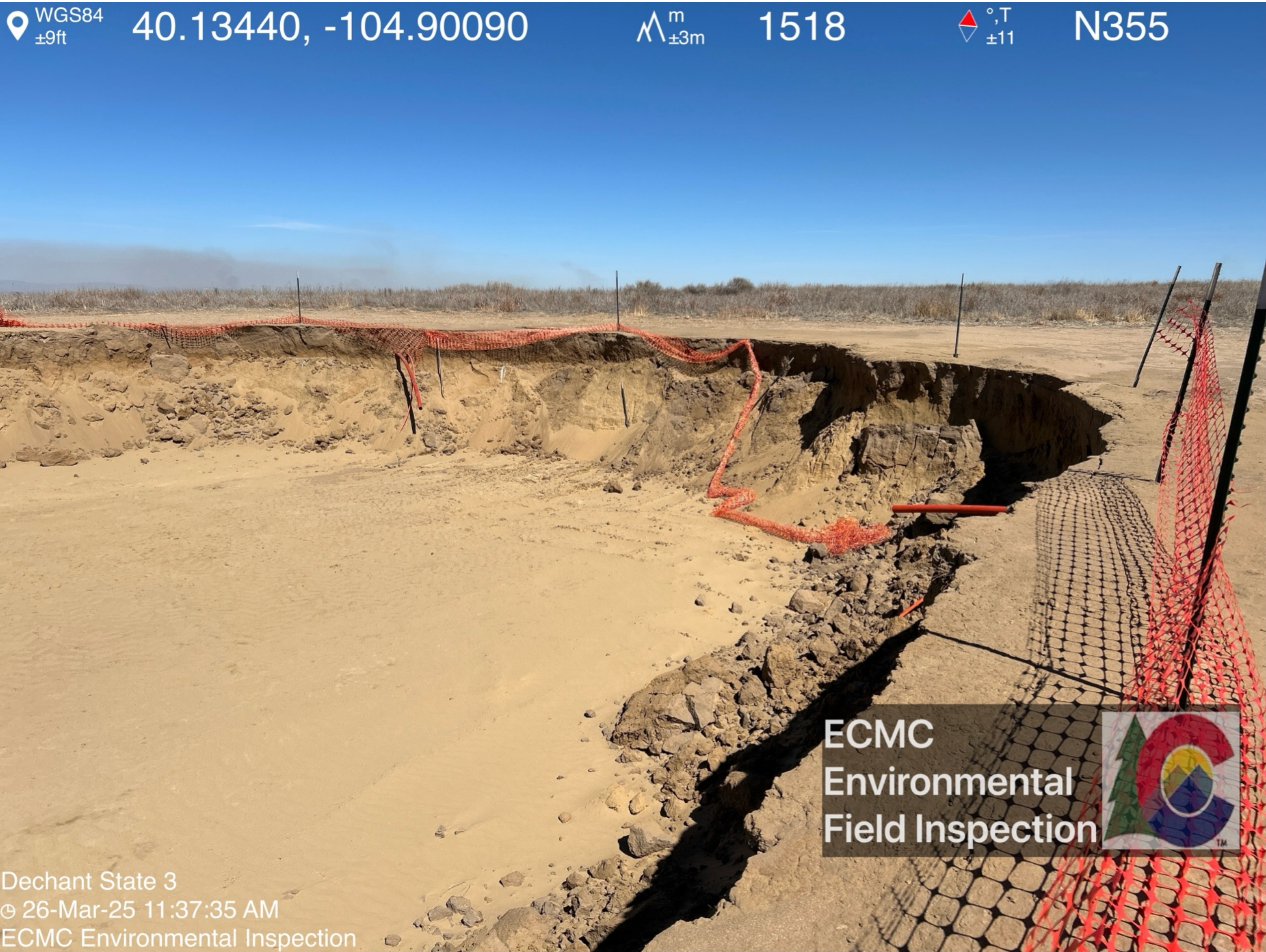


Asymmetrical ripples are visible on excavation floor. Petroleum hydrocarbon staining is visible in the center of the excavation floor.





Soil has sloughed off excavation sidewalls. Segments of flowline are visible protruding from the excavation sidewalls.



Open construction and soil stockpiles are visible on location.

