

Chevron Rockies Business Unit

Field Qualitative Criteria for ECMC Reporting Associated with the Discovery of Potentially Impacted Material

If answered **Yes** to any of the questions listed below, this may suggest the presence of potentially impacted materials as outlined in ECMC Rule 912. Out of an abundance of caution, a “Yes” response will be reported to the ECMC within 24 hours after discovery, regardless of laboratory results. **Immediately notify the RBU Remediation Team.** Include a copy of this Field Qualitative Spill Criteria Checklist in the field Report.

Please answer the following questions when on-site:

1. Is there visible petroleum hydrocarbon staining in the soil?
(Yes / **No**)
2. Does the soil sample from the stained area have a petroleum odor?
(Yes / **No**)
3. Is there a petroleum hydrocarbon sheen on the nearby surface water?
(Yes / **No**)
4. Does there appear to be a sheen on the surface of accumulated groundwater or seeps within the excavation indicative of petroleum?
(Yes / **No**)
5. Is stained soil in contact with groundwater?
(Yes / **No**)

Please Include relevant photos of the site conditions for items 1-5.

Location name: GUTTERSEN D22-28 TB (REM #37229)

Please Circle Facility Type: Well / Flowline / **Production Facility** / Other

SITE NAME / REM: GUTTERSEN D 22-28 TANK REM #37229								DATE: 3/27/2025		WEATHER: partly cloudy and 50s	
TYPE OF WORK: Tank Battery Decommissioning								CLIENT: Chevron			
LAT/LONG: 40.222091, -104.539262								PERSONNEL: EN			
ESTIMATED DEPTH TO GROUNDWATER: Groundwater not encountered								OTHER OBSERVATIONS: None			
SOIL SAMPLING								FACILITY INFRASTRUCTURE			
Date	Soil Sample ID	Soil Type	PID (ppm)	Staining (Y/N)	Odor (Y/N)	Time	Sent to lab on Ice? (Y/N)	EQUIPMENT	Quantity		
								Above Ground Storage Tank (AST)	6		
3/27/2025	PWV01@4'	SM	0.4	N	N	9:35	Y	Buried or Partially Buried Vessel	4		
3/27/2025	PWV02@4'	SM	0.3	N	N	9:40	Y	Separator	3		
3/27/2025	PWV01-DL@4'	SM	0.0	N	N	9:45	Y	Emission Control Device (ECD)	2		
3/27/2025	PWV02-DL@4'	SM	0.1	N	N	9:50	Y	Dump Line	-		
3/27/2025	PWV03@4'	SP	0.0	N	N	10:05	Y	Wellhead	-		
3/27/2025	PWV03-DL@4'	SP	0.0	N	N	10:10	Y	Flowline	-		
3/27/2025	PWV04@4'	SP	0.0	N	N	10:15	Y	Third Party Equipment:	-		
3/27/2025	PWV04-DL@4'	SP	0.0	N	N	10:20	Y	Other:	-		
3/27/2025	MISC01@0.5'	SP	0.0	N	N	10:25	N				
3/27/2025	SEP01-DL@3'	SP	0.9	N	N	10:55	Y	Soil Loads Removed			
3/27/2025	SEP02-DL@3'	SP	5.3	N	N	11:00	Y	IMPACTED SOIL IDENTIFIED? No			
3/27/2025	SEP03-DL@3'	SP	0.7	N	N	11:05	Y	ESTIMATED VOLUME OF IMPACTS:			
3/27/2025	AST01@0.5'	SP	5.0	N	N	12:55	Y	Date	Number	CY	
3/27/2025	AST02@0.5'	SP	4.8	N	N	13:00	Y				
3/27/2025	AST03@0.5'	SP	3.2	N	N	13:05	Y				
3/27/2025	AST04@0.5'	SP	5.1	N	N	13:08	Y				
3/27/2025	AST05@0.5'	SP	5.0	N	N	13:15	Y				
3/27/2025	AST06@0.5'	SP	4.8	N	N	13:18	Y				
3/27/2025	BKG01@0.5'	SP	0.0	N	N	12:25	Y	Total Removed			
3/27/2025	BKG01@3.5'	SP	0.0	N	N	12:30	Y	Disposal Facility:			
3/27/2025	BKG02@0.5'	SP	0.0	N	N	12:35	Y	Groundwater Recovery			
3/27/2025	BKG02@3.5'	SP	0.0	N	N	12:40	Y	DATE GW ENCOUNTERED:	DEPTH:		
3/27/2025	BKG03@0.5'	SP	0.0	N	N	12:42	Y	GROUNDWATER IN CONTACT WITH IMPACTED SOIL?			
3/27/2025	BKG03@3.5'	SP	0.0	N	N	12:45	Y	LNAPL OR SHEEN OBSERVED ON GW?			
3/27/2025	MISC02@0.5'	SP	0.0	N	N	11:55	N	Date	BBLs		
3/27/2025	MISC03@0.5'	SP	2.7	N	N	12:00	N				
3/27/2025	MISC04@0.5'	SP	3.0	N	N	12:05	N				
3/27/2025	MISC05@0.5'	SP	1.2	N	N	12:10	N				
3/27/2025	MISC06@0.5'	SP	5.0	N	N	12:15	N				
3/27/2025	MISC07@0.5'	SP	0.0	N	N	13:20	N				
GROUNDWATER SAMPLING											
Date/Time	Groundwater Sample ID	Depth Collected	Turbid?	Sheen?	Odor?	Photo?	Sent to lab on Ice? (Y/N)				
								Total Removed			
								Disposal Facility:			

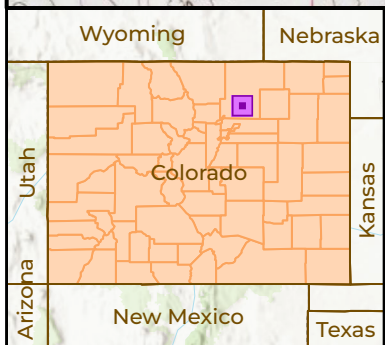
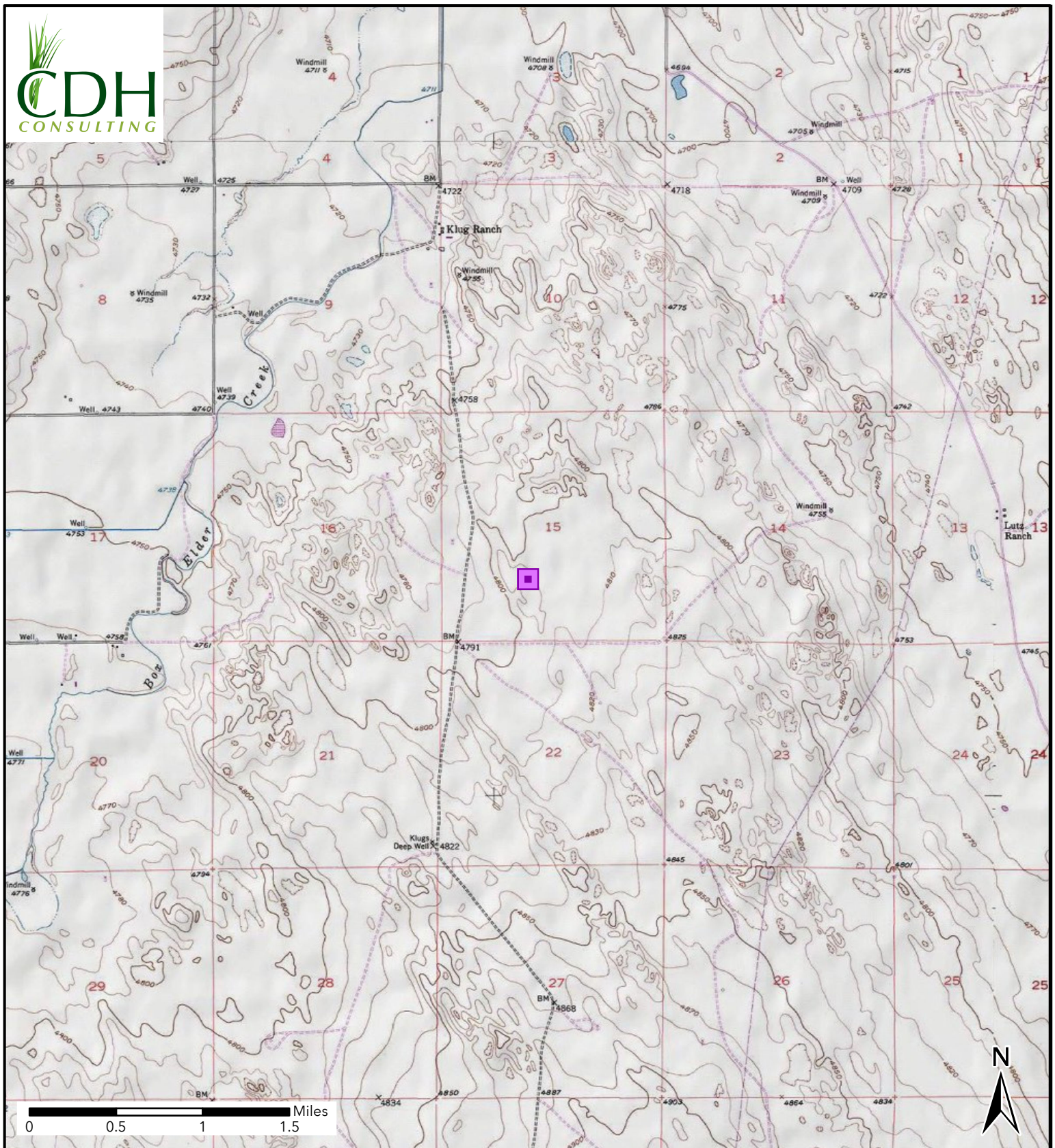


Figure 1
Site Location
GUTTERSEN D 22-28 TB
 NESW-SEC 15-T3N-R64W
 Weld County, Colorado
 Chevron

 Site Location

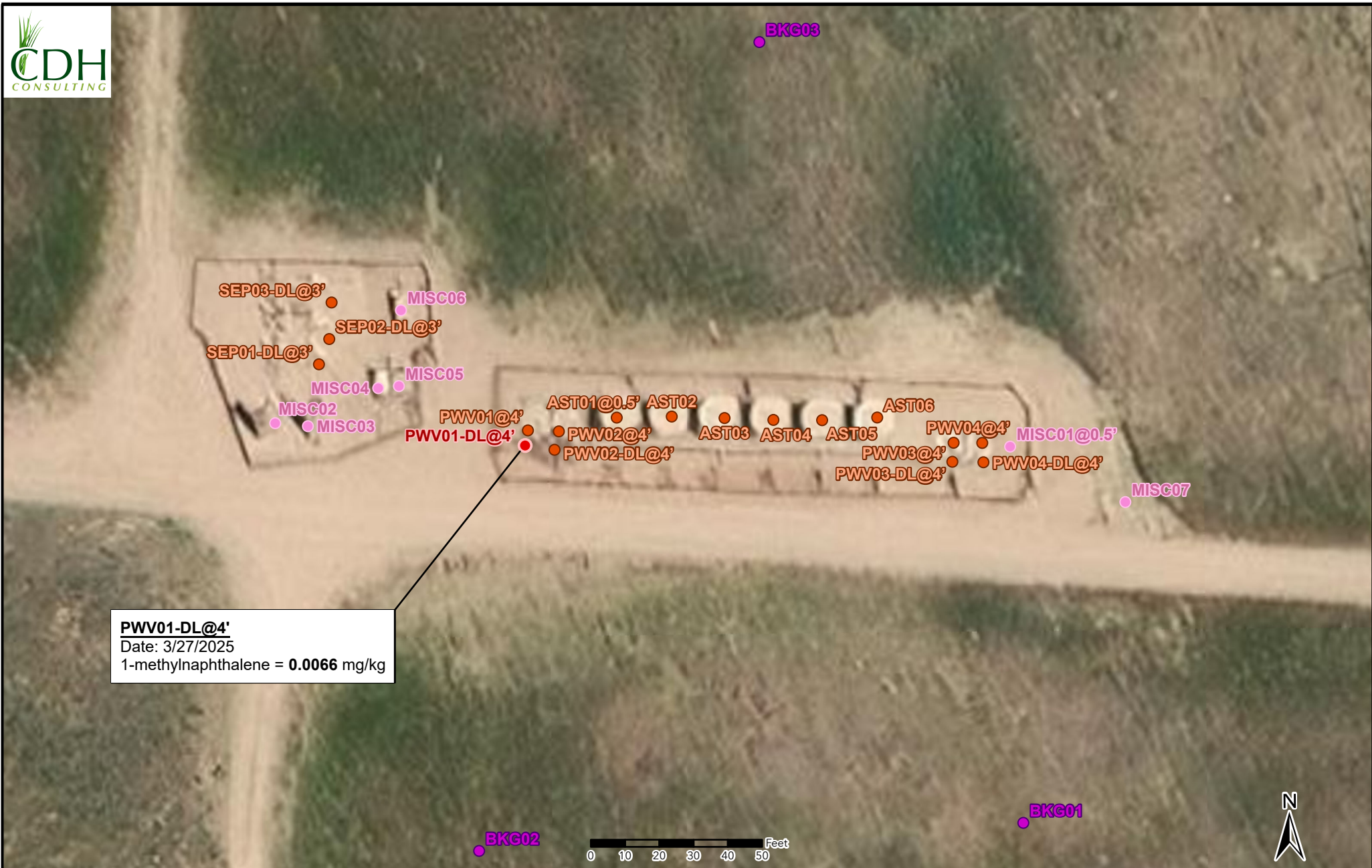


Figure 2 - Sample Locations Map

GUTTERSEN D 22-28 TB

NESW-SEC 15-T3N-R64W

Weld County, Colorado

Chevron

- Soil Sample
- Background Sample
- Screening Point
- Sample With Observed Impacts

FIELD DATA SUMMARY TABLE
NOBLE 100322
GUTTERSEN D 22-28, WELD COUNTY, COLORADO
REM # 37229

Sample ID	Sample Date	Depth (ft)	GPS Data		PDOP Value	VOC Concentration (ppm)
			Latitude/Longitude			
PWV01@4'	3/27/2025	4	40.222043	-104.539052	0.900000	0.4
PWV02@4'	3/27/2025	4	40.2220420	-104.53902	1.000000	0.3
PWV01-DL@4'	3/27/2025	4	40.2220310	-104.53906	1.000000	0.0
PWV02-DL@4'	3/27/2025	4	40.2220270	-104.53903	0.900000	0.1
PWV03@4'	3/27/2025	4	40.2220300	-104.53861	1.000000	0.0
PWV03-DL@4'	3/27/2025	4	40.2220140	-104.53861	1.000000	0.0
PWV04@4'	3/27/2025	4	40.2220290	-104.53858	1.000000	0.0
PWV04-DL@4'	3/27/2025	4	40.2220140	-104.53858	1.000000	0.0
SEP01-DL@3'	3/27/2025	3	40.222098	-104.539270	0.800000	0.9
SEP02-DL@3'	3/27/2025	3	40.222118	-104.539259	0.900000	5.3
SEP03-DL@3'	3/27/2025	3	40.222147	-104.539256	1.000000	0.7
AST01@0.5'	3/27/2025	0.5	40.222053	104.538959	1.100000	5.0
AST02@0.5'	3/27/2025	0.5	40.222053	-104.538902	1.500000	4.8
AST03@0.5'	3/27/2025	0.5	40.222051	104.538846	1.200000	3.2
AST04@0.5'	3/27/2025	0.5	40.222049	-104.538795	1.200000	5.1
AST05@0.5'	3/27/2025	0.5	40.222049	-104.538744	1.200000	5.0
AST06@0.5'	3/27/2025	0.5	40.222050	-104.538687	1.200000	4.8
Misc01@0.5'	3/27/2025	0.5	40.222026	-104.538548	0.900000	0.0
MISC02@0.5	3/27/2025	0.5	40.222051	-104.539316	1.000000	0.0
MISC03@0.5	3/27/2025	0.5	40.222048	-104.539282	1.100000	2.7
MISC04@0.5	3/27/2025	0.5	40.222078	-104.539208	1.000000	3.0
MISC05@0.5	3/27/2025	0.5	40.222080	-104.539187	1.200000	1.2
MISC06@0.5	3/27/2025	0.5	40.222141	-104.539184	1.100000	5.0
MISC07@0.5	3/27/2025	0.5	40.221981	-104.538428	2.000000	0.0
BKG01@0.5'	3/27/2025	0.5	40.221724	-104.538539	1.200000	0.0
BKG01@3.5'	3/27/2025	3.5	40.221724	-104.538539	1.200000	0.0
BKG02@0.5'	3/27/2025	0.5	40.221706	-104.539108	1.200000	0.0
BKG02@3.5'	3/27/2025	3.5	40.221706	-104.539108	1.200000	0.0
BKG03@0.5'	3/27/2025	0.5	40.222352	-104.538806	1.100000	0.0
BKG03@3.5'	3/27/2025	3.5	40.222352	-104.538806	1.100000	0.0

1. Global Positioning System (GPS) data is provided in decimal degrees using North American Datum (NAD) 83 UTMZone 13 North.

2. Volatile organic compound (VOC) concentrations are measured in the field using a photoionization detector (PID).

PDOP = Position Dilution of Precision

ppm = Parts per million

ft = Feet

TABLE 2
SUMMARY OF VOLATILE ORGANIC SOIL CHEMISTRY DATA
NOBLE 100322
GUTTERSEN D 22-28, WELD COUNTY, COLORADO
REM # 37229

Sample ID	Sample Date	Depth (ft)	Benzene (mg/kg)	Toluene (mg/kg)	Ethyl-Benzene (mg/kg)	Xylenes (mg/kg)	1,2,4- Trimethyl- Benzene (mg/kg)	1,3,5- Trimethyl- Benzene (mg/kg)	Naphthalene (mg/kg)	TPH (mg/kg)	TPH GRO (mg/kg)	TPH DRO (mg/kg)	TPH ORO (mg/kg)
ECMC Table 915-1 Limits (Residential SSL)			1.2	490	5.8	58	30	27	2	500	500**		
ECMC Table 915-1 Limits (Protection of Groundwater SSL)			0.0026	0.69	0.78	9.9	0.0081	0.0087	0.0038	500	500**		
PWV01@4'	3/27/2025	4	<0.00100	<0.00500	<0.00250	<0.00650	<0.00500	<0.00500	<0.0200	6.5963	0.0663	1.81	4.72
PWV02@4'	3/27/2025	4	<0.00100	<0.00500	<0.00250	<0.00650	<0.00500	<0.00500	<0.0200	3.291	0.0710	<4.00	3.22
PWV01-DL@4'	3/27/2025	4	<0.00100	<0.00500	<0.00250	<0.00650	<0.00500	<0.00500	<0.0200	16.6089	0.0589	9.24	7.31
PWV02-DL@4'	3/27/2025	4	<0.00100	<0.00500	<0.00250	<0.00650	<0.00500	<0.00500	<0.0200	1.9851	0.0551	<4.00	1.93
PWV03@4'	3/27/2025	4	<0.00100	<0.00500	<0.00250	<0.00650	<0.00500	<0.00500	<0.0200	1.4216	0.0616	<4.00	1.36
PWV03-DL@4'	3/27/2025	4	<0.00100	<0.00500	<0.00250	<0.00650	<0.00500	<0.00500	<0.0200	0.5394	0.0574	<4.00	0.482
PWV04@4'	3/27/2025	4	<0.00100	<0.00500	<0.00250	<0.00650	<0.00500	<0.00500	<0.0200	1.9421	0.0621	<4.00	1.88
PWV04-DL@4'	3/27/2025	4	<0.00100	<0.00500	<0.00250	<0.00650	<0.00500	<0.00500	<0.0200	2.9430	0.0530	<4.00	2.89
SEP01-DL@3'	3/27/2025	3	<0.00100	<0.00500	<0.00250	<0.00650	<0.00500	<0.00500	<0.0200	17.1102	0.0502	7.24	9.82
SEP02-DL@3'	3/27/2025	3	<0.00100	<0.00500	<0.00250	0.00195	0.00488	0.00222	<0.0200	9.3284	0.0684	4.90	4.36
SEP03-DL@3'	3/27/2025	3	<0.00100	<0.00500	<0.00250	<0.00650	<0.00500	<0.00500	<0.0200	3.5675	0.0575	<4.00	3.51
AST01@0.5'	3/27/2025	0.5	<0.00100	<0.00500	<0.00250	<0.00650	<0.00500	<0.00500	<0.0200	9.3636	0.0536	3.42	5.89
AST02@0.5'	3/27/2025	0.5	<0.00100	<0.00500	<0.00250	<0.00650	<0.00500	<0.00500	<0.0200	2.3236	0.0636	<4.00	2.26
AST03@0.5'	3/27/2025	0.5	<0.00100	<0.00500	<0.00250	<0.00650	0.00165	<0.00500	<0.0200	16.3302	0.0602	6.96	9.31
AST04@0.5'	3/27/2025	0.5	<0.00100	0.00247	<0.00250	<0.00650	<0.00500	<0.00500	<0.0200	24.9786	0.0386	6.14	18.8
AST05@0.5'	3/27/2025	0.5	<0.00100	0.00218	<0.00250	<0.00650	<0.00500	<0.00500	<0.0200	12.5032	0.0332	8.73	3.74
AST06@0.5'	3/27/2025	0.5	<0.00100	0.00220	<0.00250	<0.00650	<0.00500	<0.00500	<0.0200	14.5948	0.0248	5.56	9.01

1. Bold values exceed the ECMC Table 915-1 limit(s)
 2. Red & blue highlighted soil analytical values indicate an exceedance of the referenced soil screening level (SSL)
 3. * Indicates laboratory minimum detection limit in excess of SSL
 4. ** Summation of GRO+DRO+ORO must be less than 500 mg/kg
- (<) = Analytical result is less than the indicated laboratory reporting limit.
 TPH-GRO = Total petroleum hydrocarbons - gasoline range organics
 TPH-DRO = Total petroleum hydrocarbons - diesel range organics
 TPH-ORO = Total petroleum hydrocarbons - oil range organics
 mg/kg = Milligrams per kilogram
 ft = Feet

TABLE 3
SUMMARY OF POLYCYCLIC AROMATIC HYDROCARBON SOIL CHEMISTRY DATA
NOBLE 100322
GUTTERSEN D 22-28, WELD COUNTY, COLORADO
REM # 37229

Sample ID	Sample Date	Depth (ft)	Acenaphthene (mg/kg)	Anthracene (mg/kg)	Benzo (a) Anthracene (mg/kg)	Benzo (a) Pyrene (mg/kg)	Benzo (b) Fluoranthene (mg/kg)	Benzo (k) Fluoranthene (mg/kg)	Chrysene (mg/kg)	Dibenzo (a,h) Anthracene (mg/kg)	Fluoranthene (mg/kg)	Fluorene (mg/kg)	Indeno (1,2,3- cd) Pyrene (mg/kg)	Pyrene (mg/kg)	1-Methyl - Naphthalene (mg/kg)	2-Methyl- Naphthalene (mg/kg)
ECMC Table 915-1 Limits (Residential SSL)			360	1800	1.1	0.11	1.1	11	110	0.11	240	240	1.1	180	18	24
ECMC Table 915-1 Limits (Protection of Groundwater SSL)			0.55	5.8	0.011	0.24	0.3	2.9	9	0.096	8.9	0.54	0.98	1.3	0.006	0.019
PWV01@4'	3/27/2025	4	<0.00600	<0.00600	<0.00600	<0.00600	<0.00600	<0.00600	<0.00600	<0.00600	0.00234	<0.00600	<0.00600	<0.00600	<0.0200	<0.0200
PWV02@4'	3/27/2025	4	<0.00600	<0.00600	<0.00600	<0.00600	<0.00600	<0.00600	<0.00600	<0.00600	<0.00600	<0.00600	<0.00600	<0.00600	<0.0200	<0.0200
PWV01-DL@4'	3/27/2025	4	<0.00600	<0.00600	<0.00600	<0.00600	<0.00600	<0.00600	<0.00600	<0.00600	<0.00600	0.00213	<0.00600	<0.00600	0.0066	0.0132
PWV02-DL@4'	3/27/2025	4	<0.00600	<0.00600	<0.00600	<0.00600	<0.00600	<0.00600	<0.00600	<0.00600	<0.00600	<0.00600	<0.00600	<0.00600	<0.0200	<0.0200
PWV03@4'	3/27/2025	4	<0.00600	<0.00600	<0.00600	<0.00600	<0.00600	<0.00600	<0.00600	<0.00600	<0.00600	<0.00600	<0.00600	<0.00600	<0.0200	<0.0200
PWV03-DL@4'	3/27/2025	4	<0.00600	<0.00600	<0.00600	<0.00600	<0.00600	<0.00600	<0.00600	<0.00600	<0.00600	<0.00600	<0.00600	<0.00600	<0.0200	<0.0200
PWV04@4'	3/27/2025	4	<0.00600	<0.00600	<0.00600	<0.00600	<0.00600	<0.00600	<0.00600	<0.00600	<0.00600	<0.00600	<0.00600	<0.00600	<0.0200	<0.0200
PWV04-DL@4'	3/27/2025	4	<0.00600	<0.00600	<0.00600	<0.00600	<0.00600	<0.00600	<0.00600	<0.00600	<0.00600	<0.00600	<0.00600	<0.00600	<0.0200	<0.0200
SEP01-DL@3'	3/27/2025	3	<0.00600	<0.00600	<0.00600	<0.00600	<0.00600	<0.00600	<0.00600	<0.00600	<0.00600	<0.00600	<0.00600	<0.00600	<0.0200	<0.0200
SEP02-DL@3'	3/27/2025	3	<0.00600	<0.00600	<0.00600	<0.00600	<0.00600	<0.00600	<0.00600	<0.00600	<0.00600	<0.00600	<0.00600	<0.00600	0.00598	0.0126
SEP03-DL@3'	3/27/2025	3	<0.00600	<0.00600	<0.00600	<0.00600	<0.00600	<0.00600	<0.00600	<0.00600	<0.00600	<0.00600	<0.00600	<0.00600	<0.0200	<0.0200
AST01@0.5'	3/27/2025	0.5	<0.00600	<0.00600	<0.00600	<0.00600	<0.00600	<0.00600	<0.00600	<0.00600	<0.00600	<0.00600	<0.00600	<0.00600	<0.0200	<0.0200
AST02@0.5'	3/27/2025	0.5	<0.00600	<0.00600	<0.00600	<0.00600	<0.00600	<0.00600	<0.00600	<0.00600	<0.00600	<0.00600	<0.00600	<0.00600	<0.0200	<0.0200
AST03@0.5'	3/27/2025	0.5	<0.00600	<0.00600	<0.00600	<0.00600	<0.00600	<0.00600	<0.00600	<0.00600	<0.00600	<0.00600	<0.00600	<0.00600	<0.0200	<0.0200
AST04@0.5'	3/27/2025	0.5	<0.00600	<0.00600	<0.00600	<0.00600	<0.00600	<0.00600	<0.00600	<0.00600	<0.00600	<0.00600	<0.00600	<0.00600	<0.0200	<0.0200
AST05@0.5'	3/27/2025	0.5	<0.00600	<0.00600	<0.00600	<0.00600	<0.00600	<0.00600	<0.00600	<0.00600	<0.00600	<0.00600	<0.00600	<0.00600	<0.0200	<0.0200
AST06@0.5'	3/27/2025	0.5	<0.00600	<0.00600	0.00362	0.00210	0.00364	<0.00600	<0.00600	<0.00600	0.0110	<0.00600	<0.00600	0.00803	<0.0200	<0.0200

1. Bold values exceed the ECMC Table 915-1 limit(s)

2. Red & blue highlighted soil analytical values indicate an exceedance of the referenced soil screening level (SSL)

3. * Indicates laboratory minimum detection limit in excess of SSL

4. ** Summation of GRO+DRO+ORO must be less than 500 mg/kg

(<) = Analytical result is less than the indicated laboratory reporting limit.

TPH-GRO = Total petroleum hydrocarbons - gasoline range organics

TPH-DRO = Total petroleum hydrocarbons - diesel range organics

TPH-ORO = Total petroleum hydrocarbons - oil range organics

mg/kg = Milligrams per kilogram

ft = Feet

TABLE 4
SUMMARY OF SOIL SUITABILITY FOR RECLAMATION
NOBLE 100322
GUTTERSEN D 22-28, WELD COUNTY, COLORADO
REM # 37229

Sample ID	Sample Date	Depth (ft)	pH (Standard Units)	EC (mmhos/cm)	SAR (Standard Units)	Boron (mg/L)
ECMC Table 915-1 Soil Suitability Limits			6 - 8.3	<4	<6	2
PWV01@4'	3/27/2025	4	7.21	0.0875	0.247	0.120
PWV02@4'	3/27/2025	4	7.76	0.159	0.238	0.121
PWV01-DL@4'	3/27/2025	4	7.62	0.133	0.395	0.151
PWV02-DL@4'	3/27/2025	4	7.25	0.066	0.112	0.122
PWV03@4'	3/27/2025	4	7.94	0.346	0.772	0.128
PWV03-DL@4'	3/27/2025	4	8.05	0.212	0.570	0.160
PWV04@4'	3/27/2025	4	7.95	0.182	0.234	0.120
PWV04-DL@4'	3/27/2025	4	7.91	0.276	0.440	0.138
SEP01-DL@3'	3/27/2025	3	7.96	0.143	0.141	0.0920
SEP02-DL@3'	3/27/2025	3	7.94	0.196	0.130	0.0994
SEP03-DL@3'	3/27/2025	3	7.89	0.199	0.187	0.0831
AST01@0.5'	3/27/2025	0.5	7.82	0.238	0.252	0.137
AST02@0.5'	3/27/2025	0.5	7.99	0.169	0.132	0.0702
AST03@0.5'	3/27/2025	0.5	7.67	0.142	0.769	0.0995
AST04@0.5'	3/27/2025	0.5	5.85	0.958	0.101	0.0903
AST05@0.5'	3/27/2025	0.5	7.96	0.226	0.447	0.110
AST06@0.5'	3/27/2025	0.5	7.88	0.182	0.454	0.0867
BKG01@0.5'	3/27/2025	0.5	6.43	0.0770	0.133	0.0836
BKG01@3.5'	3/27/2025	3.5	6.87	0.0804	0.150	0.0857
BKG02@0.5'	3/27/2025	0.5	6.48	0.136	0.130	0.0789
BKG02@3.5'	3/27/2025	3.5	6.71	0.0819	0.128	0.0908
BKG03@0.5'	3/27/2025	0.5	6.48	0.0897	0.117	0.0621
BKG03@3.5'	3/27/2025	3.5	6.87	0.102	0.133	0.0939
Maximum Background Concentration			6.87	0.136	0.15	0.0939

1. **Bold** faced values exceed the ECMC Table 915-1 limit(s), but are within background concentrations.

2. **Bold** faced values exceed the ECMC Table 915-1 limit(s) and native background concentrations.

3. Brown highlighted soil analytical values indicate a regulatory exceedance.

NA = Not analyzed

TABLE 5
SUMMARY OF METALS IN SOIL CHEMISTRY DATA
NOBLE 100322
GUTTERSEN D 22-28, WELD COUNTY, COLORADO
REM # 37229

Sample ID	Sample Date	Depth (ft)	Arsenic (mg/kg)	Barium (mg/kg)	Cadmium (mg/kg)	Chromium (VI) (mg/kg)	Copper (mg/kg)	Lead (mg/kg)	Nickel (mg/kg)	Selenium (mg/kg)	Silver (mg/kg)	Zinc (mg/kg)
ECMC Table 915-1 Limits (Residential SSL)			0.68	15000	71	0.3	3100	400	1500	390	390	23000
ECMC Table 915-1 Limits (Protection of Groundwater SSL)			0.29	82	0.38	0.00067	46	14	26	0.26	0.8	370
PWV01@4'	3/27/2025	4	1.39	32.6	<1.00	<1.00 *	3.13	3.49	3.21	0.245	<0.0865	12.8
PWV02@4'	3/27/2025	4	2.13	43.8	<1.00	<1.00 *	4.24	3.68	3.99	0.269	<0.500	14.7
PWV01-DL@4'	3/27/2025	4	1.49	36.3	<1.00	<1.00 *	2.99	3.63	3.16	0.196	<0.500	13.3
PWV02-DL@4'	3/27/2025	4	1.29	27.3	0.0939	<1.00 *	2.73	3.82	2.63	0.267	<0.500	10.8
PWV03@4'	3/27/2025	4	3.74	57.1	<1.00	<1.00 *	5.75	5.06	5.98	0.407	<0.500	22.0
PWV03-DL@4'	3/27/2025	4	4.08	58.8	0.122	<1.00 *	7.26	6.42	9.18	0.328	<0.500	29.1
PWV04@4'	3/27/2025	4	3.1	53.9	0.107	<1.00 *	5.36	5.65	5.97	0.253	<0.500	29.7
PWV04-DL@4'	3/27/2025	4	2.72	48.6	0.089	<1.00 *	5.38	6.41	6.24	0.315	<0.500	21.4
SEP01-DL@3'	3/27/2025	3	1.8	40.3	0.0868	<1.00 *	4.23	4.16	4.04	0.187	<0.500	16.4
SEP02-DL@3'	3/27/2025	3	2.14	41.2	0.0917	<1.00 *	4.43	4.77	4.09	0.23	<0.500	18.3
SEP03-DL@3'	3/27/2025	3	0.487	19.6	<1.00	<1.00 *	1.33	2.2	1.09	<2.50	<0.500	3.29
AST01@0.5'	3/27/2025	0.5	1.75	43.9	0.106	<1.00 *	4.31	4.08	4.35	0.195	<0.500	17.7
AST02@0.5'	3/27/2025	0.5	1.51	40.4	<1.00	<1.00 *	3.40	3.81	3.62	<2.50	<0.500	14.9
AST03@0.5'	3/27/2025	0.5	1.37	36.9	<1.00	<1.00 *	3.17	3.29	3.28	<2.50	<0.500	15.3
AST04@0.5'	3/27/2025	0.5	2.8	63.6	0.0868	<1.00 *	4.8	4.54	4.37	0.855	<0.500	26.9
AST05@0.5'	3/27/2025	0.5	2.73	65.1	<1.00	<1.00 *	5.49	5.03	5.7	0.285	<0.500	22.3
AST06@0.5'	3/27/2025	0.5	1.76	37.0	0.0928	<1.00 *	3.83	4.23	3.69	<2.50	<0.500	18.7
BKG01@0.5'	3/27/2025	0.5	1.01	21.4	<1.00	<1.00 *	2.34	3.28	2.00	<2.50	<0.500	10.6
BKG01@3.5'	3/27/2025	3.5	1.42	44.8	<1.00	<1.00 *	3.43	3.92	4.08	0.196	<0.500	17.9
BKG02@0.5'	3/27/2025	0.5	1.02	19.6	0.0923	<1.00 *	2.39	3.66	2.01	<2.50	<0.500	10.8
BKG02@3.5'	3/27/2025	3.5	1.09	27.2	<1.00	<1.00 *	2.45	3.3	2.46	0.204	<0.500	11.6
BKG03@0.5'	3/27/2025	0.5	1.19	26.6	0.124	<1.00 *	2.80	3.99	2.31	0.213	<0.500	11.5
BKG03@3.5'	3/27/2025	3.5	1.42	34.1	<1.00	<1.00 *	3.29	3.28	3.48	0.196	<0.500	14.4
1.25x Maximum Background Concentration			1.78	56.0	0.155	0	4.29	4.99	5.10	0.266	0	22.4

1. **Bold** faced values exceed the ECMC Table 915-1 limit(s), but are within 1.25x background concentrations.
 2. **Bold** faced values exceed the ECMC Table 915-1 limit(s) and native background concentrations.
 3. Red & blue highlighted soil analytical values indicate an exceedance of the referenced soil screening level (SSL).
 4. Non-detect background results accounted for in the highest background concentration by using the reporting limit.
- ECMC = Energy & Carbon Management Commission
(<) = Analytical result is less than the indicated laboratory reporting limit.
mg/kg = Milligrams per kilogram
ft = Feet
* Indicates laboratory minimum detection limit in excess of SSL
NA = Not analyzed

Attachment A - Photographic Log

Gutterson D 22-28 Tank Battery

Chevron Remediation #37229

March 27, 2025



Photo 1: View of PWV01 and PWV02 excavation area, facing east-northeast

Attachment A - Photographic Log

Gutterson D 22-28 Tank Battery

Chevron Remediation #37229

March 27, 2025

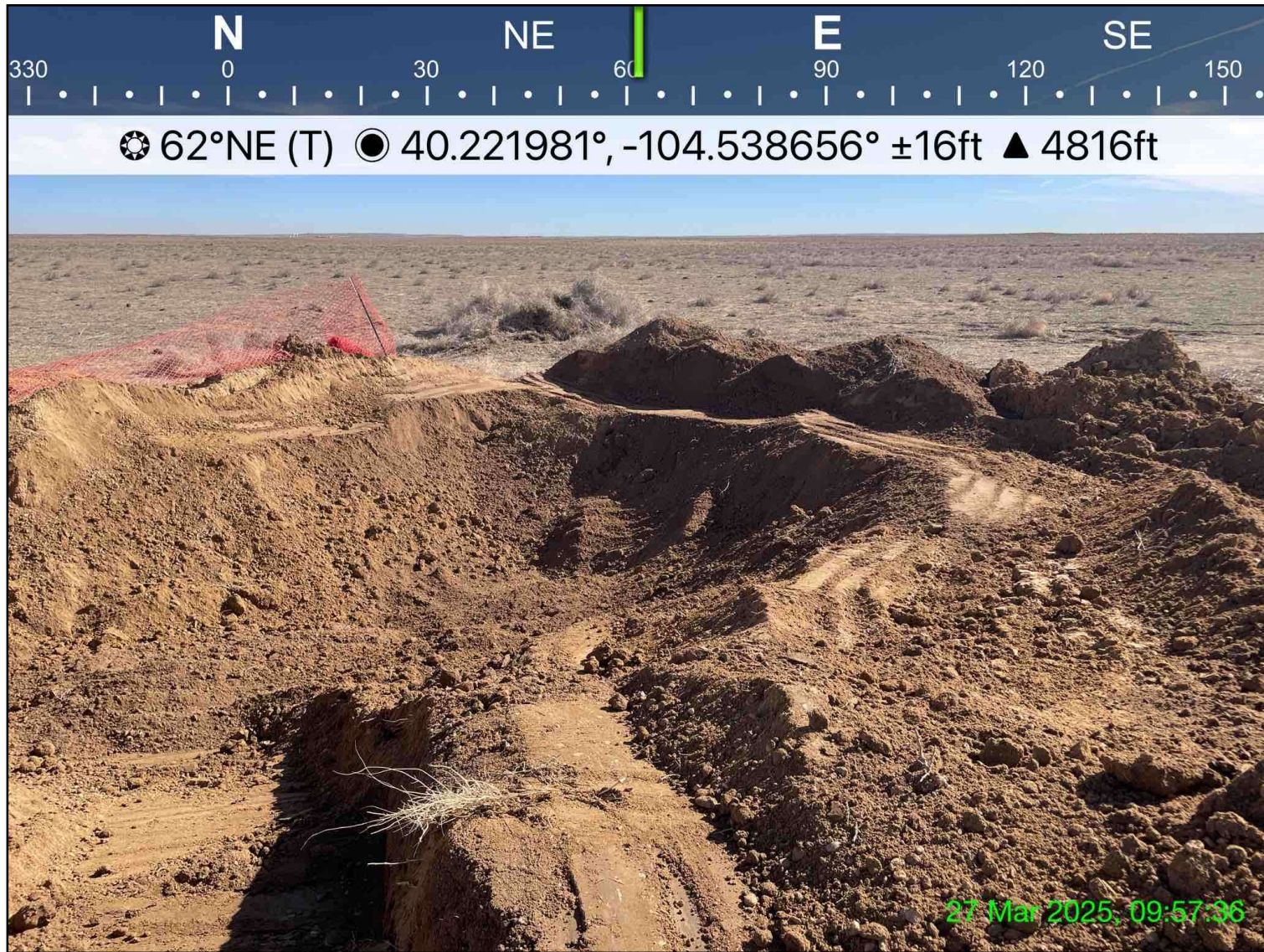


Photo 2: View of PWV03 and PWV04 excavation area, facing northeast.

Attachment A - Photographic Log

Gutterson D 22-28 Tank Battery

Chevron Remediation #37229

March 27, 2025

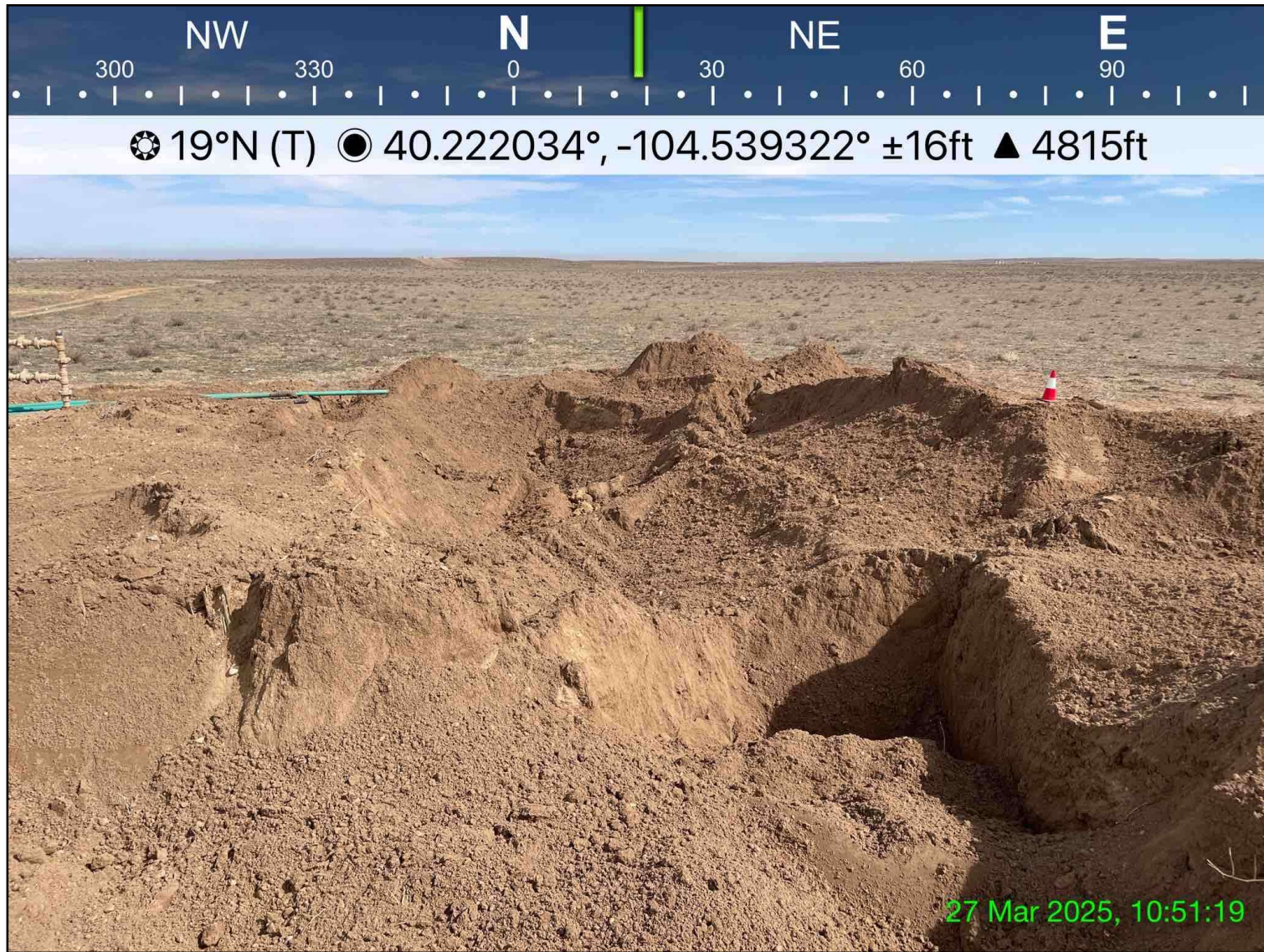


Photo 3: View of SEP01-DL, SEP02-DL, and SEP03-DL excavation and sampling area, facing north.

Attachment A - Photographic Log

Gutterson D 22-28 Tank Battery

Chevron Remediation #37229

March 27, 2025



Photo 4: View of BKG01 sample location, facing southeast.

Attachment A - Photographic Log

Gutterson D 22-28 Tank Battery

Chevron Remediation #37229

March 27, 2025



Photo 5: View of BKG02 sample location facing north.

Attachment A - Photographic Log

Gutterson D 22-28 Tank Battery

Chevron Remediation #37229

March 27, 2025



Photo 6: View of BKG03 sample location, facing north

Attachment A - Photographic Log

Gutterson D 22-28 Tank Battery

Chevron Remediation #37229

March 27, 2025



Photo 7: View of AST sample locations, facing west.