

Chevron Rockies Business Unit

Field Qualitative Criteria for ECMC Reporting Associated with the Discovery of Potentially Impacted Material

If answered **Yes** to any of the questions listed below, this may suggest the presence of potentially impacted materials as outlined in ECMC Rule 912. Out of an abundance of caution, a “Yes” response will be reported to the ECMC within 24 hours after discovery, regardless of laboratory results. **Immediately notify the RBU Remediation Team.** Include a copy of this Field Qualitative Spill Criteria Checklist in the field Report.

Please answer the following questions when on-site:

1. Is there visible petroleum hydrocarbon staining in the soil?
(Yes / **No**)
2. Does the soil sample from the stained area have a petroleum odor?
(Yes / **No**)
3. Is there a petroleum hydrocarbon sheen on the nearby surface water?
(Yes / **No**)
4. Does there appear to be a sheen on the surface of accumulated groundwater or seeps within the excavation indicative of petroleum?
(Yes / **No**)
5. Is stained soil in contact with groundwater?
(Yes / **No**)

Please Include relevant photos of the site conditions for items 1-5.

Location name: : HANSCOME C 21-20 FL (REM #34830)

Please Circle Facility Type: Well / **Flowline** / Production Facility / Other

SITE NAME / REM: HANSCOME C21-20 REM #34830								DATE: 3/27/2025		WEATHER: 80 and sunny	
TYPE OF WORK: Flowline Decommissioning								CLIENT: Chevron			
LAT/LONG: 40.297791, -104.560479								PERSONNEL: JW			
ESTIMATED DEPTH TO GROUNDWATER: No groundwater encountered								OTHER OBSERVATIONS: Wetland nearby			
SOIL SAMPLING								FACILITY INFRASTRUCTURE			
Date	Soil Sample ID	Soil Type	PID (ppm)	Staining (Y/N)	Odor (Y/N)	Time	Sent to lab on Ice? (Y/N)	EQUIPMENT	Quantity		
								Above Ground Storage Tank (AST)	-		
3/27/2025	FL01-R-W@4'	SW	0.4	N	N	9:05	Y	Buried or Partially Buried Vessel	-		
3/27/2025	FL01-01@3'	SW	0.7	N	N	9:10	Y	Separator	-		
3/27/2025	FL01-02@3'	SC	36.7	N	N	9:15	Y	Emission Control Device (ECD)	-		
3/27/2025	FL01-03@3'	SC	2.5	N	N	13:40	Y	Dump Line	-		
3/27/2025	FL01-04@3'	SW	0.1	N	N	12:15	Y	Wellhead	1		
3/27/2025	FL01-05@3'	SC	0.3	N	N	12:45	Y	Flowline	1		
3/27/2025	PH01@3'	SC	0.8	N	N	-	NA	Third Party Equipment:	-		
3/27/2025	PH02@3'	SC	1.4	N	N	-	NA	Other:	-		
3/27/2025	PH03@3'	SC	0.4	N	N	-	NA	Soil Loads Removed			
3/27/2025	PH04@3'	SC	0.9	N	N	-	NA	IMPACTED SOIL IDENTIFIED? No			
3/27/2025	BKG01@3.5'	SC	0.6	N	N	14:45	Y	ESTIMATED VOLUME OF IMPACTS:			
3/27/2025	BKG02@3.5'	SC	0.3	N	N	14:50	Y	Date	Number	CY	
3/27/2025	BKG03@3.5'	SC	0.2	N	N	14:55	Y				
								Total Removed			
								Disposal Facility:			
								Groundwater Recovery			
								DATE GW ENCOUNTERED:	DEPTH:		
								GROUNDWATER IN CONTACT WITH IMPACTED SOIL?			
								LNAPL OR SHEEN OBSERVED ON GW?			
GROUNDWATER SAMPLING								Date	BBLs		
Date/Time	Groundwater Sample ID	Depth Collected	Turbid?	Sheen?	Odor?	Photo?	Sent to lab on Ice? (Y/N)				
								Total Removed			
								Disposal Facility:			

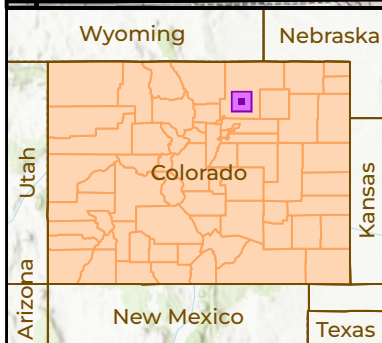
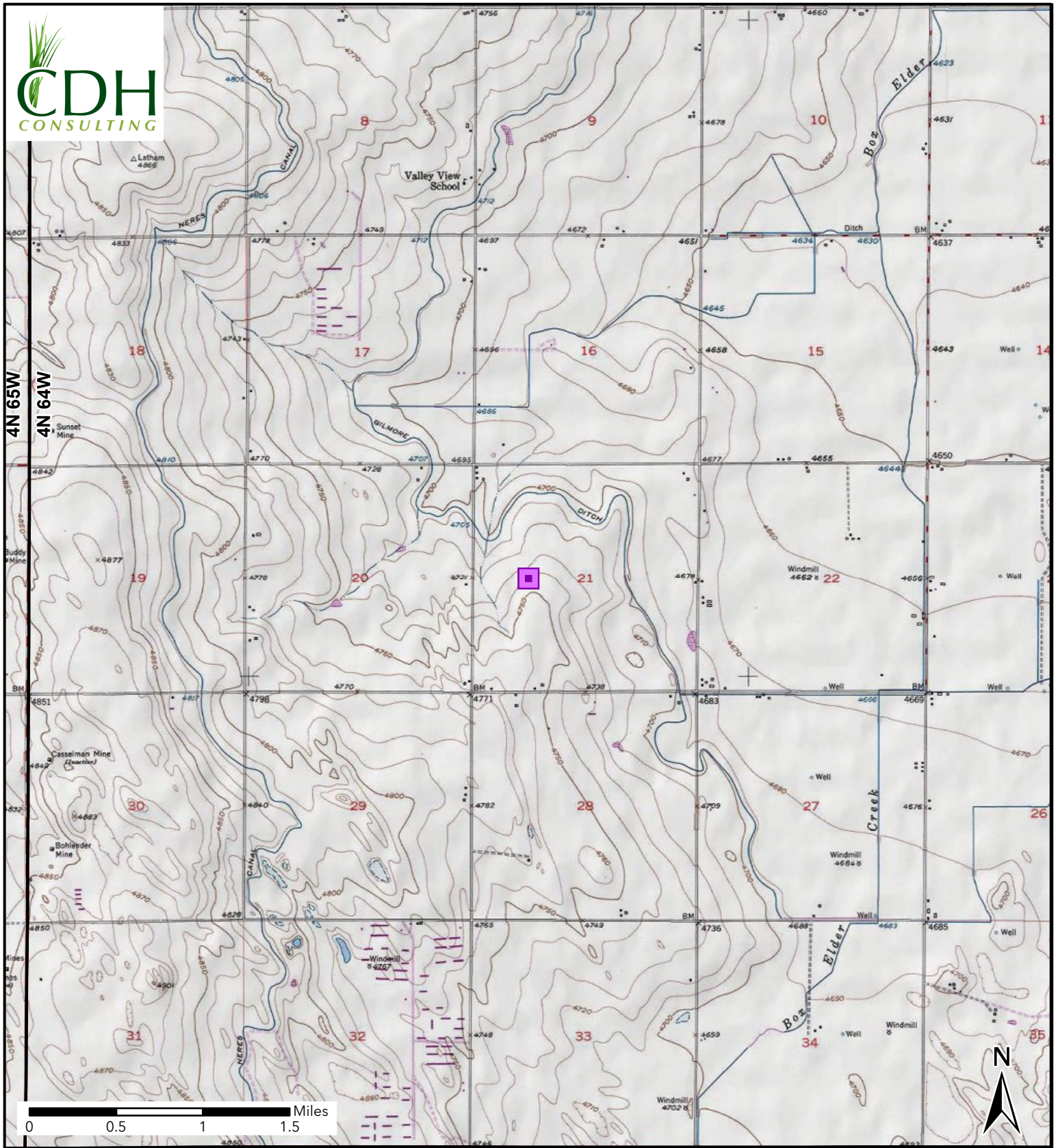


Figure 1
Site Location
HANSCOME C 21-20 FL
 NSW-SEC 21-T4N-R64W
 Weld County, Colorado
 Chevron

 Site Location

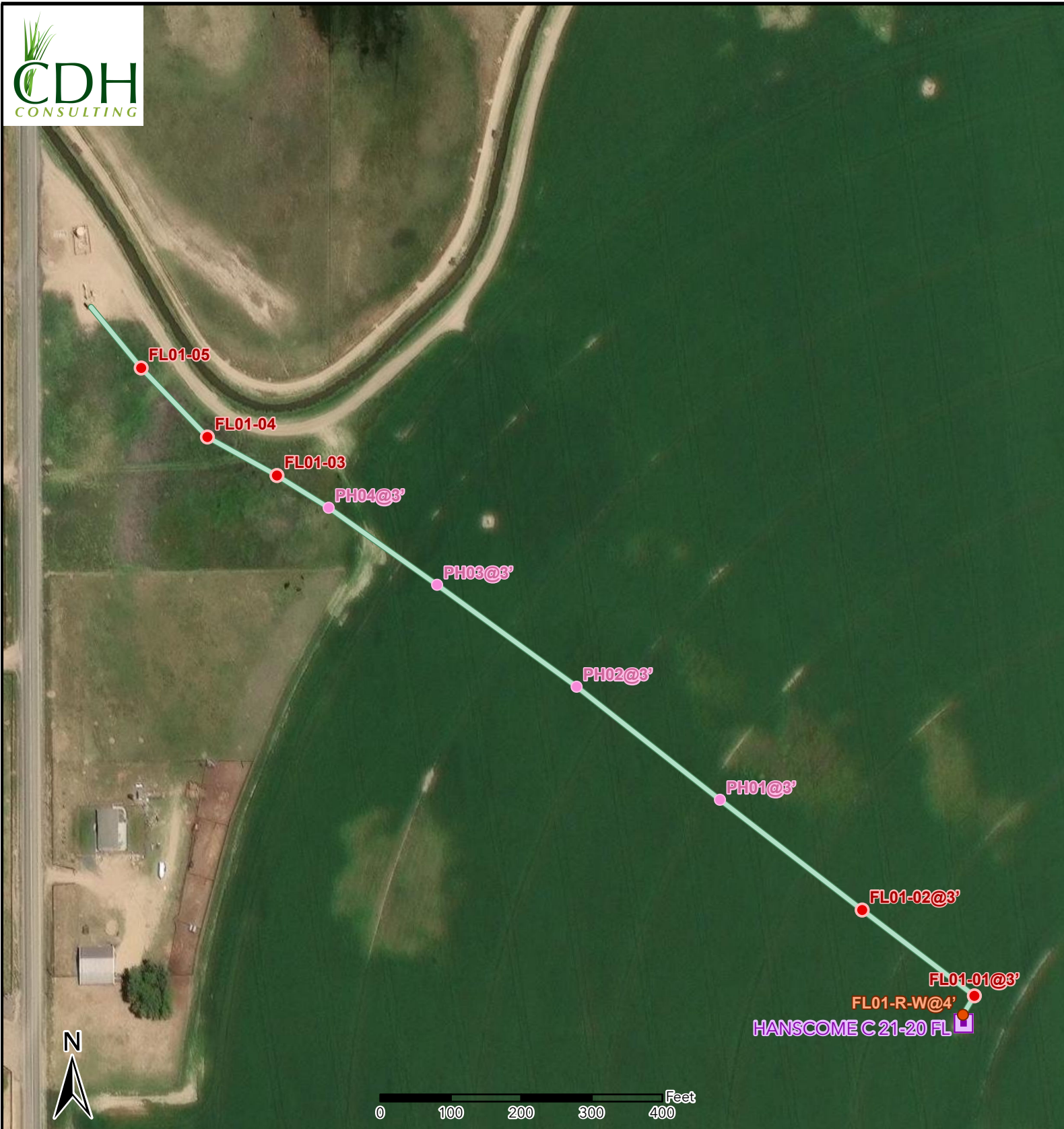


Figure 2
Sample Locations Map
HANSCOME C 21-20 FL
 SWNW-SEC 21-T4N-R64W
 Weld County, Colorado
 Chevron






-  Site Location
-  Soil Sample
-  Screening Point
-  Sample With Observed Impacts
-  Flowline Removed

TABLE 1
FIELD DATA SUMMARY TABLE
NOBLE 100322
HANSCOME C21-20, WELD COUNTY, COLORADO
REM # 34830

Sample ID	Sample Date	Depth (ft)	GPS Data Latitude/Longitude		PDOP Value	VOC Concentration (ppm)
FL01-R-W@4'	3/27/2025	4	40.297838	-104.560457	1.400000	0.4
FL01-01@3'	3/27/2025	3	40.297911	-104.560397	1.100000	0.7
FL01-02@3'	3/27/2025	3	40.298250	-104.560963	1.100000	36.7
FL01-03@3'	3/27/2025	3	40.299965	-104.563915	1.000000	2.5
FL01-04@3'	3/27/2025	3	40.300118	-104.564266	1.200000	0.1
FL01-05@3'	3/27/2025	3	40.300390	-104.564599	1.000000	0.3
PH01@3'	3/27/2025	3	40.298685	-104.561680	1.400000	0.8
PH02@3'	3/27/2025	3	40.299131	-104.562403	1.100000	1.4
PH03@3'	3/27/2025	3	40.299533	-104.563106	1.100000	0.4
PH04@3'	3/27/2025	3	40.299838	-104.563653	1.100000	0.9
BKG01@3.5'	3/27/2025	3.5	40.299713	-104.563836	1.000000	0.6
BKG02@3.5'	3/27/2025	3.5	40.299718	-104.563936	1.800000	0.3
BKG03@3.5'	3/27/2025	3.5	40.299717	-104.564039	1.200000	0.2

1. Global Positioning System (GPS) data is provided in decimal degrees using North American Datum (NAD) 83 UTMZone 13 North.

2. Volatile organic compound (VOC) concentrations are measured in the field using a photoionization detector (PID).

PDOP = Position Dilution of Precision

ppm = Parts per million

ft = Feet

TABLE 2
SUMMARY OF VOLATILE ORGANIC SOIL CHEMISTRY DATA
NOBLE 100322
HANSCOME C21-20, WELD COUNTY, COLORADO
REM # 34830

Sample ID	Sample Date	Depth (ft)	Benzene (mg/kg)	Toluene (mg/kg)	Ethyl-Benzene (mg/kg)	Xylenes (mg/kg)	1,2,4- Trimethyl- Benzene (mg/kg)	1,3,5- Trimethyl- Benzene (mg/kg)	Naphthalene (mg/kg)	TPH (mg/kg)	TPH GRO (mg/kg)	TPH DRO (mg/kg)	TPH ORO (mg/kg)
ECMC Table 915-1 Limits (Residential SSL)			1.2	490	5.8	58	30	27	2	500	500**		
ECMC Table 915-1 Limits (Protection of Groundwater SSL)			0.0026	0.69	0.78	9.9	0.0081	0.0087	0.0038	500	500**		
FL01-R-W@4'	3/27/2025	4	<0.00100	<0.00500	<0.00250	<0.00650	<0.00500	<0.00500	<0.0200	2.9815	0.0515	<4.00	2.93
FL01-01@3'	3/27/2025	3	<0.00100	<0.00500	<0.00250	<0.00650	<0.00500	<0.00500	0.0771	15.6331	0.0531	5.28	10.3
FL01-02@3'	3/27/2025	3	0.000875	0.0195	0.00443	0.0385	0.00230	<0.00500	2.74	1499.104	0.104	795	704
FL01-03@3'	3/27/2025	3	<0.00100	<0.00500	0.000750	0.00467	<0.00500	<0.00500	0.212	50.9653	0.0653	23.0	27.9
FL01-04@3'	3/27/2025	3	<0.00100	<0.00500	<0.00250	<0.00650	<0.00500	<0.00500	0.0175	9.1211	0.0811	3.5	5.54
FL01-05@3'	3/27/2025	3	<0.00100	<0.00500	<0.00250	0.00117	<0.00500	<0.00500	0.0167	4.2438	0.0738	2.09	2.08

1. Bold values exceed the ECMC Table 915-1 limit(s)

2. Red & blue highlighted soil analytical values indicate an exceedance of the referenced soil screening level (SSL)

3. * Indicates laboratory minimum detection limit in excess of SSL

4. ** Summation of GRO+DRO+ORO must be less than 500 mg/kg

(<) = Analytical result is less than the indicated laboratory reporting limit.

TPH-GRO = Total petroleum hydrocarbons - gasoline range organics

TPH-DRO = Total petroleum hydrocarbons - diesel range organics

TPH-ORO = Total petroleum hydrocarbons - oil range organics

mg/kg = Milligrams per kilogram

ft = Feet

TABLE 3
SUMMARY OF POLYCYCLIC AROMATIC HYDROCARBON SOIL CHEMISTRY DATA
NOBLE 100322
HANSCOME C21-20, WELD COUNTY, COLORADO
REM # 34830

Sample ID	Sample Date	Depth (ft)	Acenaphthene (mg/kg)	Anthracene (mg/kg)	Benzo (a) Anthracene (mg/kg)	Benzo (a) Pyrene (mg/kg)	Benzo (b) Fluoranthene (mg/kg)	Benzo (k) Fluoranthene (mg/kg)	Chrysene (mg/kg)	Dibenzo (a,h) Anthracene (mg/kg)	Fluoranthene (mg/kg)	Fluorene (mg/kg)	Indeno (1,2,3- cd) Pyrene (mg/kg)	Pyrene (mg/kg)	1-Methyl - Naphthalene (mg/kg)	2-Methyl- Naphthalene (mg/kg)
ECMC Table 915-1 Limits (Residential SSL)			360	1800	1.1	0.11	1.1	11	110	0.11	240	240	1.1	180	18	24
ECMC Table 915-1 Limits (Protection of Groundwater SSL)			0.55	5.8	0.011	0.24	0.3	2.9	9	0.096	8.9	0.54	0.98	1.3	0.006	0.019
FL01-R-W@4'	3/27/2025	4	<0.00600	<0.00600	<0.00600	<0.00600	<0.00600	<0.00600	<0.00600	<0.00600	<0.00600	<0.00600	<0.00600	<0.00600	<0.0200	<0.0200
FL01-01@3'	3/27/2025	3	0.130	0.214	0.309	0.215	0.308	0.119	0.282	0.0394	0.847	0.158	0.126	0.668	0.0154	0.0265
FL01-02@3'	3/27/2025	3	5.01	6.81	9.56	6.49	10.0	3.54	8.97	1.43	28.5	5.76	4.14	20.7	0.578	1.01
FL01-03@3'	3/27/2025	3	0.322	0.572	0.541	0.348	0.469	0.193	0.495	0.0601	1.59	0.425	0.191	1.24	0.0433	0.0741
FL01-04@3'	3/27/2025	3	0.0175	0.0229	0.0245	0.0160	0.0240	0.00755	0.0231	0.00300	0.0732	0.0202	0.00915	0.0580	<0.200	0.00593
FL01-05@3'	3/27/2025	3	<0.00600	<0.00600	<0.00600	<0.00600	<0.00600	<0.00600	<0.00600	<0.00600	<0.00600	<0.00600	<0.00600	<0.00600	<0.0200	<0.0200

1. Bold values exceed the ECMC Table 915-1 limit(s)

2. Red & blue highlighted soil analytical values indicate an exceedance of the referenced soil screening level (SSL)

3. * Indicates laboratory minimum detection limit in excess of SSL

4. ** Summation of GRO+DRO+ORO must be less than 500 mg/kg

(<) = Analytical result is less than the indicated laboratory reporting limit.

TPH-GRO = Total petroleum hydrocarbons - gasoline range organics

TPH-DRO = Total petroleum hydrocarbons - diesel range organics

TPH-ORO = Total petroleum hydrocarbons - oil range organics

mg/kg = Milligrams per kilogram

ft = Feet

TABLE 4
SUMMARY OF SOIL SUITABILITY FOR RECLAMATION
NOBLE 100322
HANSCOME C21-20, WELD COUNTY, COLORADO
REM # 34830

Sample ID	Sample Date	Depth (ft)	pH (Standard Units)	EC (mmhos/cm)	SAR (Standard Units)	Boron (mg/L)
ECMC Table 915-1 Soil Suitability Limits			6 - 8.3	<4	<6	2
FL01-R-W@4'	3/27/2025	4	8.12	0.694	4.70	0.511
FL01-01@3'	3/27/2025	3	7.87	0.534	3.96	0.411
FL01-02@3'	3/27/2025	3	7.47	0.349	2.85	0.377
FL01-03@3'	3/27/2025	3	7.38	5.260	3.92	1.73
FL01-04@3'	3/27/2025	3	7.39	3.230	2.84	0.881
FL01-05@3'	3/27/2025	3	7.42	3.700	4.99	2.28
BKG01@3.5'	3/27/2025	3.5	7.64	2.540	3.97	0.629
BKG02@3.5'	3/27/2025	3.5	7.64	3.260	7.91	0.784
BKG03@3.5'	3/27/2025	3.5	7.54	4.430	6.37	1.04
Maximum Background Concentration			7.64	4.43	7.91	1.04

1. **Bold** faced values exceed the ECMC Table 915-1 limit(s), but are within background concentrations.
2. **Bold** faced values exceed the ECMC Table 915-1 limit(s) and native background concentrations.
3. Brown highlighted soil analytical values indicate a regulatory exceedance.

AP = Analysis pending

NA = Not analyzed

TABLE 5
SUMMARY OF METALS IN SOIL CHEMISTRY DATA
NOBLE 100322
HANSCOME C21-20, WELD COUNTY, COLORADO
REM # 34830

Sample ID	Sample Date	Depth (ft)	Arsenic (mg/kg)	Barium (mg/kg)	Cadmium (mg/kg)	Chromium (VI) (mg/kg)	Copper (mg/kg)	Lead (mg/kg)	Nickel (mg/kg)	Selenium (mg/kg)	Silver (mg/kg)	Zinc (mg/kg)
ECMC Table 915-1 Limits (Residential SSL)			0.68	15000	71	0.3	3100	400	1500	390	390	23000
ECMC Table 915-1 Limits (Protection of Groundwater SSL)			0.29	82	0.38	0.00067	46	14	26	0.26	0.8	370
FL01-R-W@4'	3/27/2025	4	6.52	80.5	0.0926	<1.00*	12.1	14.4	11.5	0.568	<0.500	66.1
FL01-01@3'	3/27/2025	3	3.85	51.3	0.102	<1.00*	9.10	9.21	8.84	0.496	<0.500	38.6
FL01-02@3'	3/27/2025	3	1.52	32.4	<1.00	<1.00*	3.75	3.15	3.86	0.248	<0.500	15.8
FL01-03@3'	3/27/2025	3	2.08	57.9	0.168	<1.00*	6.83	6.76	6.34	0.613	<0.500	26.6
FL01-04@3'	3/27/2025	3	1.66	46.9	0.120	<1.00*	4.91	4.76	4.71	0.366	<0.500	19.6
FL01-05@3'	3/27/2025	3	2.06	52.0	<1.00	<1.00*	4.44	4.90	5.67	0.325	<0.500	20.2
BKG01@3.5'	3/27/2025	3.5	2.09	63.5	0.0887	<1.00*	4.73	4.43	6.01	0.311	<0.500	21.6
BKG02@3.5'	3/27/2025	3.5	2.36	66.8	<1.00	<1.00*	4.76	5.23	7.49	0.289	<0.500	22.3
BKG03@3.5'	3/27/2025	3.5	2.01	48.3	<1.00	<1.00*	3.98	3.99	5.56	0.327	<0.500	17.5
1.25x Maximum Background Concentration			2.95	83.5	0.1109	NA	5.95	6.54	9.36	0.409	NA	27.9

1. **Bold** faced values exceed the ECMC Table 915-1 limit(s), but are within 1.25x background concentrations.
2. **Red** faced values exceed the ECMC Table 915-1 limit(s) and native background concentrations.
3. Red & blue highlighted soil analytical values indicate an exceedance of the referenced soil screening level (SSL).
4. Non-detect background results accounted for in the highest background concentration by using the reporting limit.

ECMC = Energy & Carbon Management Commission

(<) = Analytical result is less than the indicated laboratory reporting limit.

mg/kg = Milligrams per kilogram

ft = Feet

* Indicates laboratory minimum detection limit in excess of SSL

AP = Analysis pending

NA = Not analyzed

Attachment A - Photographic Log

HANSCOME C21-20 Flowline

Chevron REM# 34830

March 27, 2025



Photo 1: View of FL01-R-W@4', facing southwest

Attachment A - Photographic Log

HANSCOME C21-20 Flowline

Chevron REM# 34830

March 27, 2025



Photo 2: View of FL01-01@3', facing north

Attachment A - Photographic Log

HANSCOME C21-20 Flowline

Chevron REM# 34830

March 27, 2025



Photo 3: View of FL01-02@3', facing north-northwest

Attachment A - Photographic Log

HANSCOME C21-20 Flowline

Chevron REM# 34830

March 27, 2025

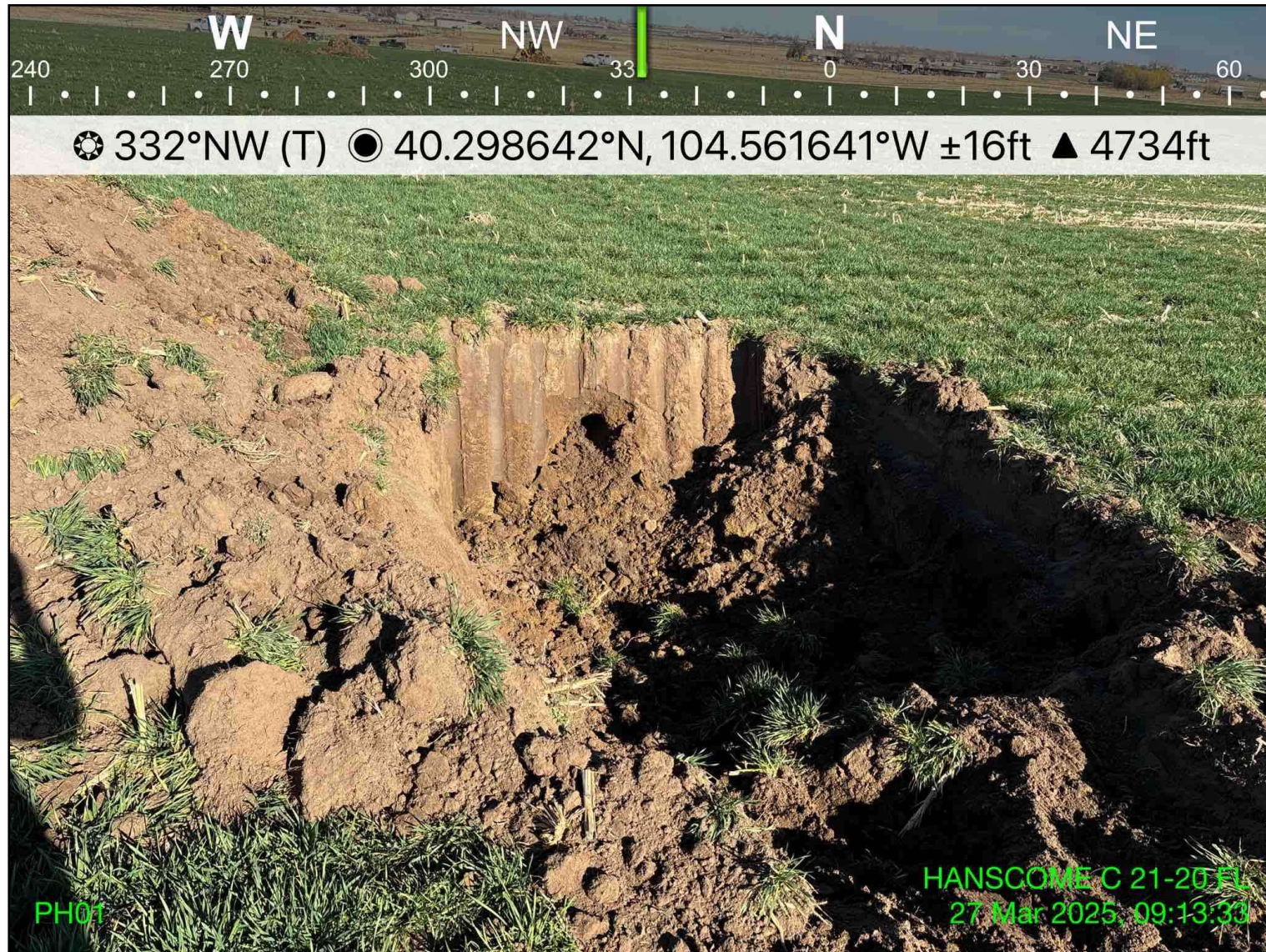


Photo 4: View of PH01, facing northwest

Attachment A - Photographic Log

HANSCOME C21-20 Flowline

Chevron REM# 34830

March 27, 2025

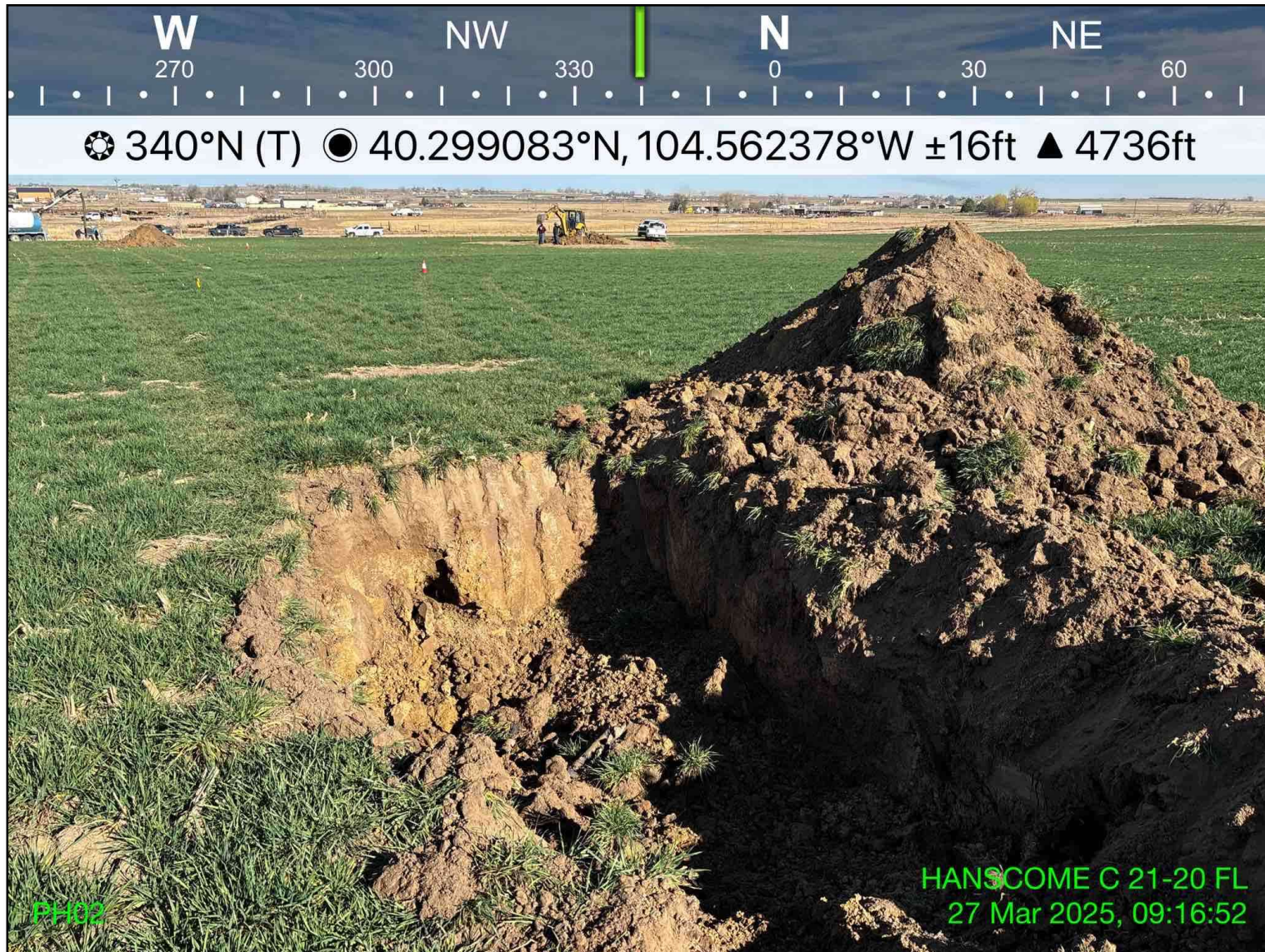


Photo 5: View of PH02, facing northwest-north

Attachment A - Photographic Log

HANSCOME C21-20 Flowline

Chevron REM# 34830

March 27, 2025

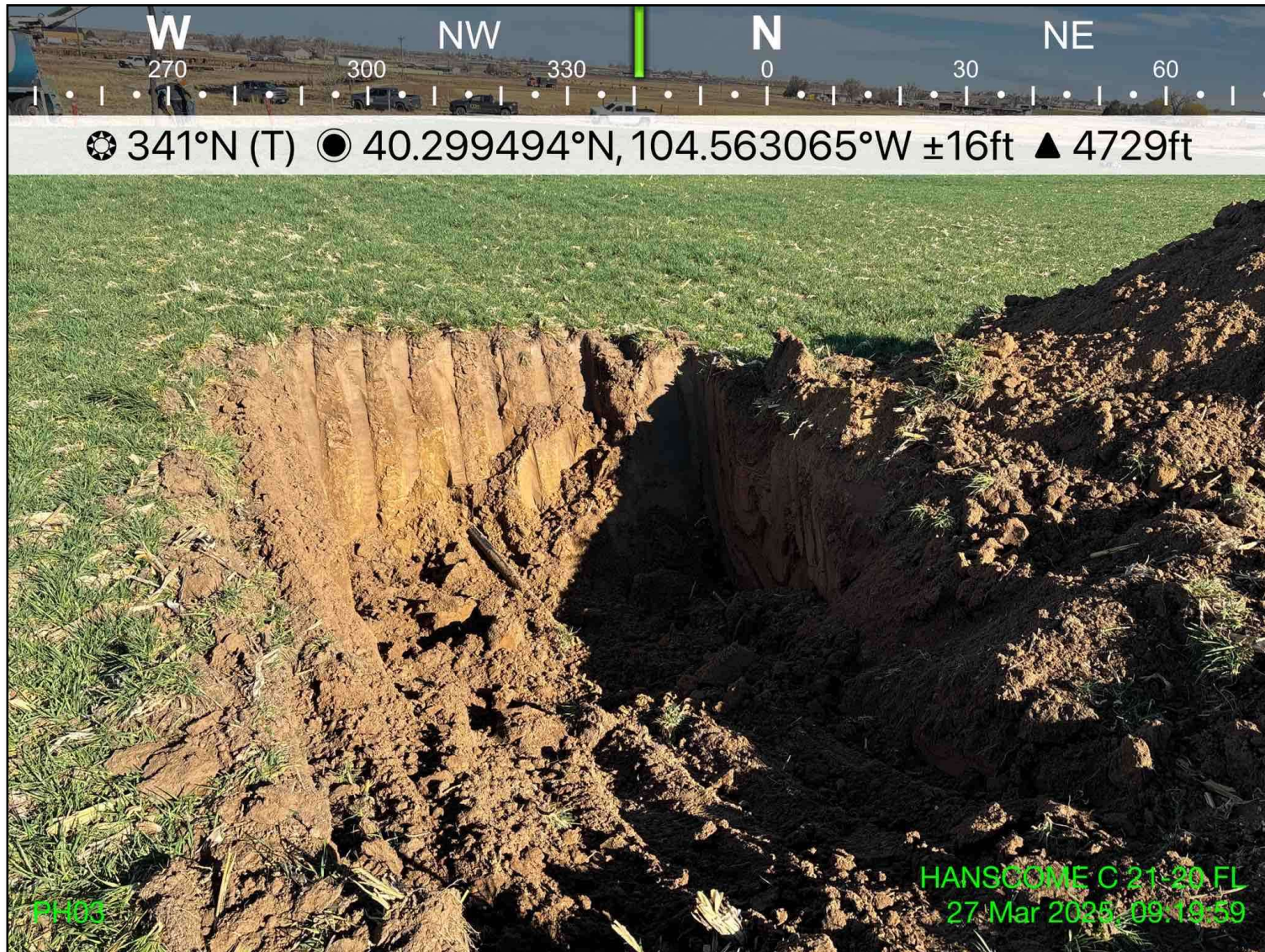


Photo 6: View of PH03, facing northwest-north

Attachment A - Photographic Log

HANSCOME C21-20 Flowline

Chevron REM# 34830

March 27, 2025



Photo 7: View of FL01-04@4', facing northeast

Attachment A - Photographic Log

HANSCOME C21-20 Flowline

Chevron REM# 34830

March 27, 2025

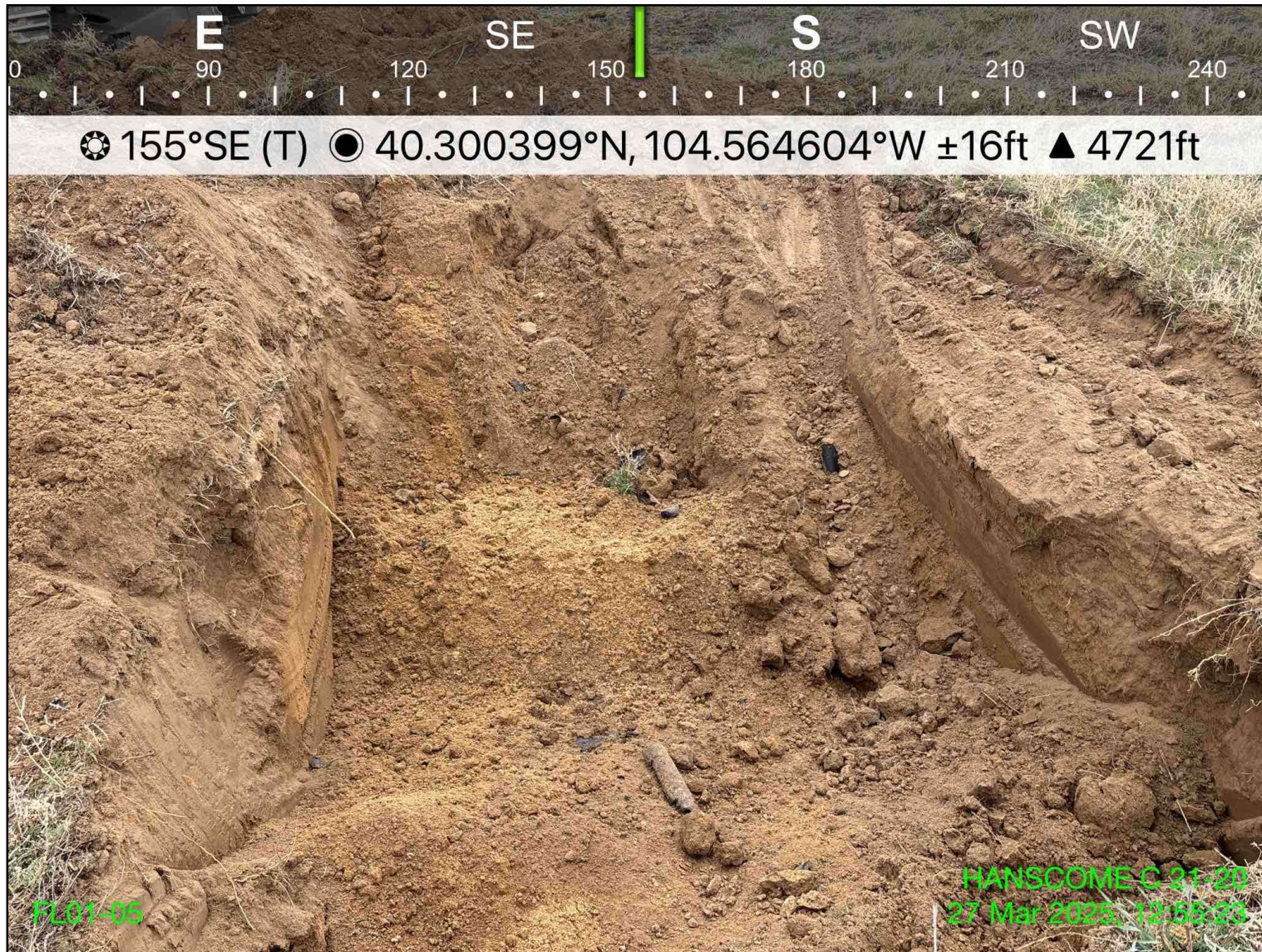


Photo 8: View of FL01-05@4', facing southeast-south

Attachment A - Photographic Log

HANSCOME C21-20 Flowline

Chevron REM# 34830

March 27, 2025



Photo 9: View of PH04, facing southeast-south

Attachment A - Photographic Log

HANSCOME C21-20 Flowline

Chevron REM# 34830

March 27, 2025

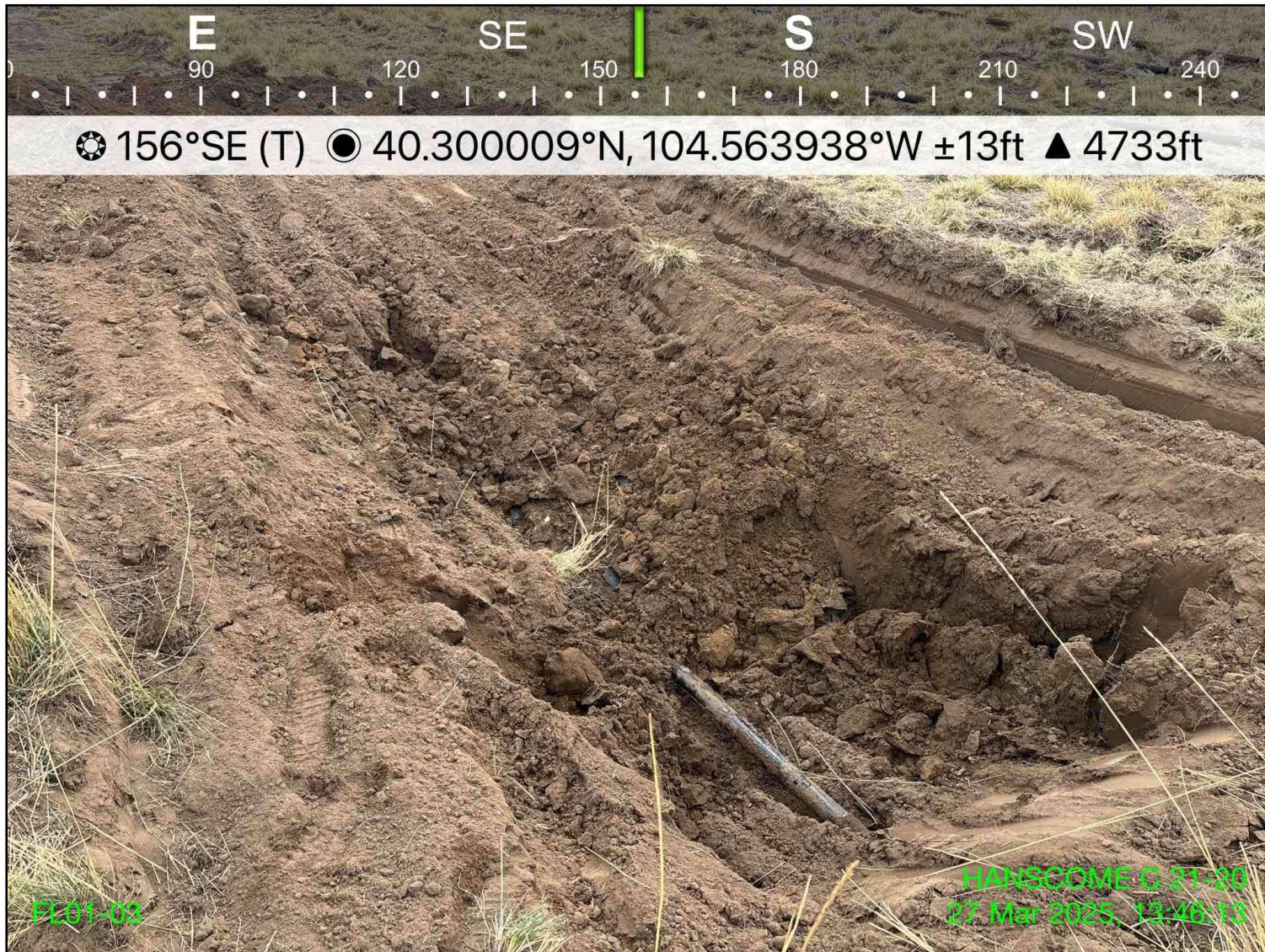


Photo 10: View of FL01-03@3', facing southeast-south