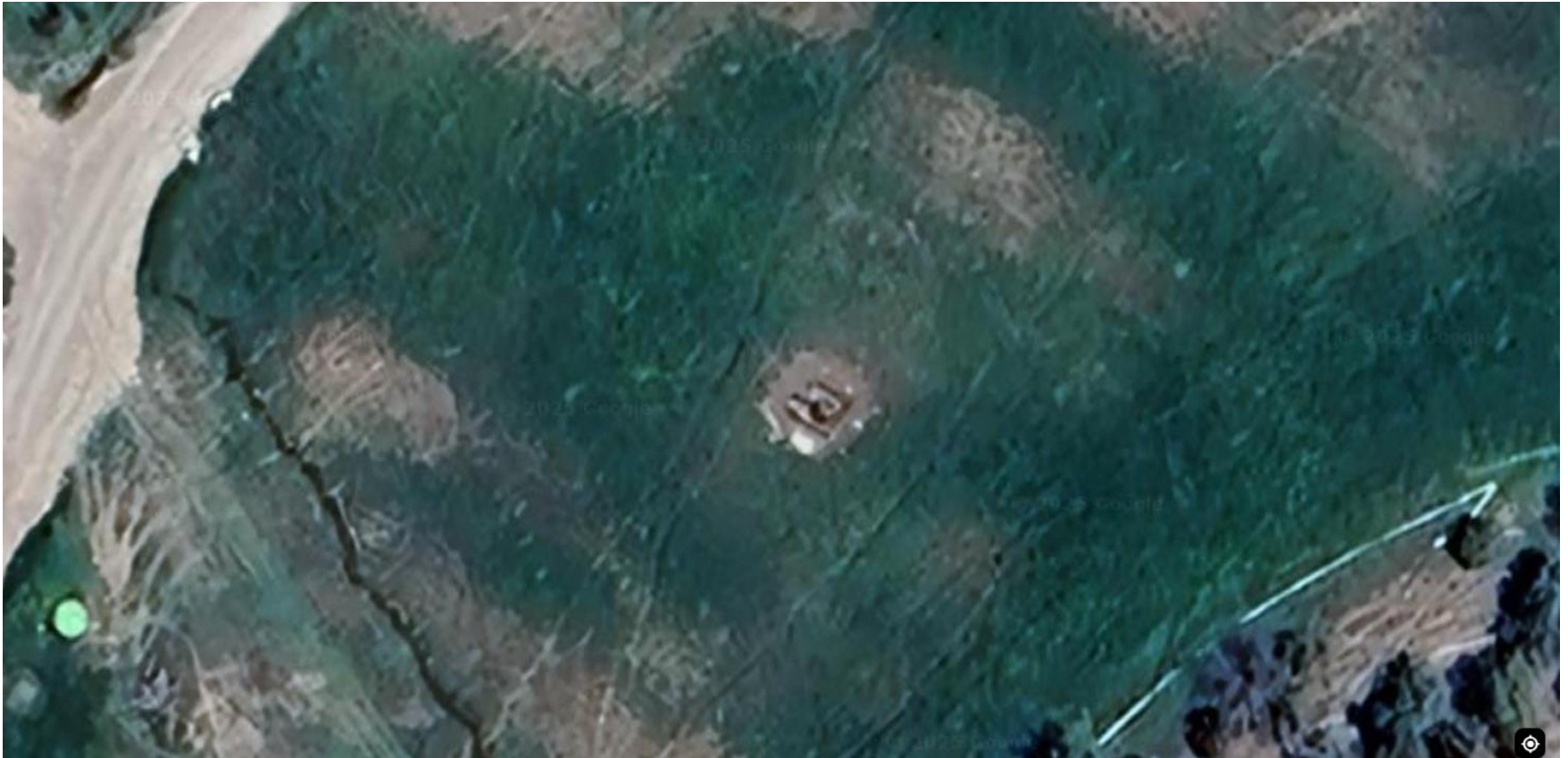


Storm Water Management and Erosion control
Location Name: TEP ROCKY MOUNTAIN LLC GIBSON GULCH UNIT 5-29
Location ID: 323969



**Location Overview: Location is within High
Priority/Density/NSO/Black Bear Habitat areas.**
Section/Township/Range: 29 6S91W



COLORADO
Energy & Carbon Management
Commission
Department of Natural Resources

Storm water Management and Erosion control
Location Name: TEP ROCKY MOUNTAIN LLC GIBSON GULCH UNIT 5-29
Location ID: 323969



North West corner of location.



North East corner of location.



South West corner of location.



South East corner of location.