

TABLE 1
SUMMARY OF VOLATILE ORGANIC SOIL CHEMISTRY DATA
PDC 69175
WELLS RANCH 34F-402 TANK BATTERY, WELD COUNTY, COLORADO
REM # 36082

Sample ID	Sample Date	Depth (ft)	Benzene (mg/kg)	Toluene (mg/kg)	Ethyl-Benzene (mg/kg)	Xylenes (mg/kg)	1,2,4-Trimethyl-Benzene (mg/kg)	1,3,5-Trimethyl-Benzene (mg/kg)	Naphthalene (mg/kg)	TPH (mg/kg)	TPH GRO (mg/kg)	TPH DRO (mg/kg)	TPH ORO (mg/kg)
ECMC Table 915-1 Limits (Residential SSL)			1.2	490	5.8	58	30	27	2	500	500**		
ECMC Table 915-1 Limits (Protection of Groundwater SSL)			0.0026	0.69	0.78	9.9	0.0081	0.0087	0.0038	500	500**		
Waste Char	4/2/2024	1	9.3	58	16	99	35	12	2.8	4480	3300	1000	180
SS-01	4/19/2024	1	<0.0020	<0.0050	<0.0050	<0.010	<0.0050	<0.0050	<0.0038	<100.5	<0.50	<50	<50
SS-02	4/19/2024	1	<0.0020	<0.0050	<0.0050	<0.010	<0.0050	<0.0050	<0.0038	210	<0.50	50	160
SS-03	4/19/2024	1	<0.0020	<0.0050	<0.0050	<0.010	<0.0050	<0.0050	<0.0038	257	<0.50	87	170
SS-04	4/19/2024	1	<0.0020	<0.0050	<0.0050	<0.010	<0.0050	<0.0050	<0.0038	136	<0.50	51	85
SS-05	4/19/2024	1	<0.0020	<0.0050	<0.0050	<0.010	<0.0050	<0.0050	<0.0038	<100.5	<0.50	<50	<50
SS-06	4/26/2024	1	<0.00200	<0.00200	<0.00200	<0.00200	<0.00200	<0.00200	<0.002	581	<0.200	<25.0	581
SS-07	4/26/2024	1	<0.00200	<0.00200	<0.00200	<0.00200	<0.00200	<0.00200	<0.002	605	<0.200	<25.0	605
SS-02-2	5/21/2024	1	<0.0020	<0.0050	<0.0050	<0.010	<0.0050	<0.0050	<0.0038	<100.5	<0.50	<50	265
SS-03-2	5/21/2024	1	<0.0020	<0.0050	<0.0050	<0.010	<0.0050	<0.0050	<0.0038	<100.5	<0.50	<50	<50
SS-06-2	5/21/2024	1	<0.0020	<0.0050	<0.0050	<0.010	<0.0050	<0.0050	<0.0038	<100.5	<0.50	<50	<50
SS-07-2	5/21/2024	1	<0.0020	<0.0050	<0.0050	<0.010	<0.0050	<0.0050	<0.0038	1040.3	<0.50	50.3	994
SS-07-3	6/5/2024	1	<0.00200	<0.00200	<0.00200	<0.00200	<0.00200	<0.00200	<0.002	112	<0.200	<25.0	112
SS-02-3	6/5/2024	1	<0.00200	<0.00200	<0.00200	<0.00200	<0.00200	<0.00200	<0.002	<125.2	<0.200	<25.0	<100
SS-07-2	8/19/2024	1.5	<0.0020	<0.0050	<0.0050	<0.010	<0.0050	<0.0050	<0.0038	<100.5	<0.50	<50	<50
SS-06	8/19/2024	1.5	<0.0020	<0.0050	<0.0050	<0.010	<0.0050	<0.0050	<0.0038	<100.5	<0.50	<50	<50
SS-07	8/19/2024	1.5	<0.0020	<0.0050	<0.0050	<0.010	<0.0050	<0.0050	<0.0038	<100.5	<0.50	<50	<50
SS-NE (BG)	01/16/2025	1	<0.0020	<0.0050	<0.0050	<0.010	<0.0050	<0.0050	<0.0038	<100.5	<0.50	<50	<50
SS-NW (BG)	01/16/2025	1	<0.0020	<0.0050	<0.0050	<0.010	<0.0050	<0.0050	<0.0038	<100.5	<0.50	<50	<50
SS-S (BG)	01/16/2025	1	<0.0020	<0.0050	<0.0050	<0.010	<0.0050	<0.0050	<0.0038	<100.5	<0.50	<50	<50
SS-W (BG)	01/16/2025	1	<0.0020	<0.0050	<0.0050	<0.010	<0.0050	<0.0050	<0.0038	<100.5	<0.50	<50	<50

- Bold values exceed the ECMC Table 915-1 limit(s)
 - Red & blue highlighted soil analytical values indicate an exceedance of the referenced soil screening level (SSL)
 - * Indicates laboratory minimum detection limit in excess of SSL
 - ** Summation of GRO+DRO+ORO must be less than 500 mg/kg
- NA - Not analyzed

 = Source material characterization sample, excavated and transported off site for disposal.
 = Material excavated and transported off site for disposal.

TABLE 2
SUMMARY OF POLYCYCLIC AROMATIC HYDROCARBON SOIL CHEMISTRY DATA
PDC 69175
WELLS RANCH 34F-402 TANK BATTERY, WELD COUNTY, COLORADO
REM # 36082

Sample ID	Sample Date	Depth (ft)	Acenaphthene (mg/kg)	Anthracene (mg/kg)	Benzo (a) Anthracene (mg/kg)	Benzo (a) Pyrene (mg/kg)	Benzo (b) Fluoranthene (mg/kg)	Benzo (k) Fluoranthene (mg/kg)	Chrysene (mg/kg)	Dibenzo (a,h) Anthracene (mg/kg)	Fluoranthene (mg/kg)	Fluorene (mg/kg)	Indeno (1,2,3-cd) Pyrene (mg/kg)	Pyrene (mg/kg)	1-Methyl - Naphthalene (mg/kg)	2-Methyl - Naphthalene (mg/kg)
ECMC Table 915-1 Limits (Residential SSL)			360	1800	1.1	0.11	1.1	11	110	0.11	240	240	1.1	180	18	24
ECMC Table 915-1 Limits (Protection of Groundwater SSL)			0.55	5.8	0.011	0.24	0.3	2.9	9	0.096	8.9	0.54	0.98	1.3	0.006	0.019
Waste Char	4/2/2024	1	0.112	<0.00500	0.0768	0.00631	0.00674	0.00618	0.0401	<0.00500	0.00686	<0.00500	<0.00500	0.0283	1.99	11.2
SS-01	4/19/2024	1	<0.00500	<0.00500	0.00514	0.00631	0.0138	0.00618	0.00521	<0.00500	0.00685	<0.00500	<0.00500	0.0138	<0.00500	<0.00500
SS-02	4/19/2024	1	<0.00500	<0.00500	0.0215	0.0309	0.0696	0.0230	0.0269	<0.00500	0.0288	<0.00500	0.0401	0.0998	<0.00500	<0.00500
SS-03	4/19/2024	1	<0.00500	0.00567	0.0548	0.0626	0.100	0.0355	0.0585	<0.00500	0.0500	0.00588	0.129	0.266	<0.00500	<0.00500
SS-04	4/19/2024	1	<0.00500	<0.00500	<0.00500	<0.00500	<0.00500	<0.00500	<0.00500	<0.00500	<0.00500	<0.00500	<0.00500	0.0105	<0.00500	<0.00500
SS-05	4/19/2024	1	<0.00500	<0.00500	0.00721	0.0112	0.0182	0.0061	0.00922	<0.00500	0.00628	<0.00500	0.0182	0.0334	<0.00500	0.00506
SS-06	4/26/2024	1	<0.020	<0.020	0.051	0.071	0.068	0.03	0.076	<0.020	0.094	<0.020	0.077	0.084	<0.002	<0.002
SS-07	4/26/2024	1	<0.020	0.058	0.196	0.219	0.182	0.091	0.250	0.040	0.322	<0.020	0.194	0.326	<0.002	<0.002
SS-02-2	5/21/2024	1	<0.020	<0.020	0.012	<0.020	0.036	0.024	0.027	<0.020	<0.020	<0.020	0.031	<0.020	<0.002	<0.002
SS-03-2	5/21/2024	1	<0.020	<0.020	<0.005	<0.020	<0.020	<0.020	<0.020	<0.020	<0.020	<0.020	<0.020	<0.020	<0.002	<0.002
SS-06-2	5/21/2024	1	<0.020	<0.020	<0.005	<0.020	<0.020	<0.020	<0.020	<0.020	<0.020	<0.020	<0.020	<0.020	<0.002	<0.002
SS-07-2	5/21/2024	1	<0.020	<0.020	0.075	0.121	0.119	0.041	0.088	0.023	0.108	<0.020	0.156	0.101	<0.002	<0.002
SS-07-3	6/5/2024	1	<0.020	<0.020	0.009	<0.020	<0.020	<0.020	<0.020	<0.020	<0.020	<0.020	<0.020	<0.020	<0.002	<0.002
SS-02-3	6/5/2024	1	<0.020	<0.020	<0.005	<0.020	<0.020	<0.020	<0.020	<0.020	<0.020	<0.020	<0.020	<0.020	<0.002	<0.002
SS-07-2	8/19/2024	1.5	<0.00500	<0.00500	<0.00500	<0.00500	<0.00500	<0.00500	<0.00500	<0.00500	<0.00500	<0.00500	<0.00500	<0.00500	<0.00500	<0.00500
SS-06	8/19/2024	1.5	<0.00500	<0.00500	<0.00500	<0.00500	<0.00500	<0.00500	<0.00500	<0.00500	<0.00500	<0.00500	<0.00500	<0.00500	<0.00500	<0.00500
SS-07	8/19/2024	1.5	<0.00500	<0.00500	<0.00500	<0.00500	<0.00500	<0.00500	<0.00500	<0.00500	<0.00500	<0.00500	<0.00500	<0.00500	<0.00500	<0.00500
SS-NE (BG)	01/16/2025	1	<0.00500	<0.00500	<0.00500	<0.00500	<0.00500	<0.00500	<0.00500	<0.00500	<0.00500	<0.00500	<0.00500	<0.00500	<0.00500	<0.00500
SS-NW (BG)	01/16/2025	1	<0.00500	<0.00500	<0.00500	<0.00500	<0.00500	<0.00500	<0.00500	<0.00500	<0.00500	<0.00500	<0.00500	<0.00500	<0.00500	<0.00500
SS-S (BG)	01/16/2025	1	<0.00500	<0.00500	<0.00500	<0.00500	<0.00500	<0.00500	<0.00500	<0.00500	<0.00500	<0.00500	<0.00500	<0.00500	<0.00500	<0.00500
SS-W (BG)	01/16/2025	1	<0.00500	<0.00500	<0.00500	<0.00500	<0.00500	<0.00500	<0.00500	<0.00500	<0.00500	<0.00500	<0.00500	<0.00500	<0.00500	<0.00500

1. Bold values exceed the ECMC Table 915-1 limit(s)

2. Red & blue highlighted soil analytical values indicate an exceedance of the referenced soil screening level (SSL)

3. * Indicates laboratory minimum detection limit in excess of SSL

NA - Not analyzed

 = Source material characterization sample, excavated and transported off site for disposal.

 = Material excavated and transported off site for disposal.

TABLE 3
SUMMARY OF SOIL SUITABILITY FOR RECLAMATION
PDC 69175
WELLS RANCH 34F-402 TANK BATTERY, WELD COUNTY, COLORADO
REM # 36082

Sample ID	Sample Date	Depth (ft)	pH (Standard Units)	EC (mmhos/cm)	SAR (Standard Units)	Boron (mg/L)
ECMC Table 915-1 Soil Suitability Limits			6 - 8.3	<4	<6	2
Waste Char	4/2/2024	1	7.66	0.306	0.524	<2.00
SS-01	4/19/2024	1	8.67	0.329	0.678	<2.00
SS-02	4/19/2024	1	8.56	0.332	0.378	<2.00
SS-03	4/19/2024	1	8.56	0.211	0.101	<2.00
SS-04	4/19/2024	1	9.34	0.569	1.82	<2.00
SS-05	4/19/2024	1	8.45	0.328	0.542	<2.00
SS-06	4/26/2024	1	8.35	0.260	0.828	0.227
SS-07	4/26/2024	1	8.48	0.287	1.48	0.139
SS-02-2	5/21/2024	1	8.38	0.342	0.905	0.434
SS-03-2	5/21/2024	1	9.10	0.464	12.8	0.193
SS-06-2	5/21/2024	1	8.61	0.422	2.64	0.598
SS-07-2	5/21/2024	1	8.43	0.198	1.10	0.188
SS-02-3	6/5/2024	1	8.32	0.401	0.805	0.589
SS-07-3	6/5/2024	1	8.60	0.367	1.76	0.867
BG-N	4/19/2024	1	7.12	0.127	0.0455	<2.00
BG-S	4/19/2024	1	7.25	0.425	0.383	<2.00
BG-E	4/19/2024	1	7.48	0.147	0.0147	<2.00
BG-W	4/19/2024	1	7.08	0.204	0.0471	<2.00
BG-IN	4/19/2024	1	8.59	0.214	0.114	<2.00
SS-08	8/19/2024	1	8.00	5.06	0.105	<2.00
SS-09	8/19/2024	1	8.19	7.01	0.959	<2.00
SS-10	8/19/2024	1	8.22	7.86	0.646	<2.00
SS-11	8/19/2024	1	8.25	0.238	0.528	<2.00
SS-12	8/19/2024	1	8.13	0.339	0.048	<2.00
SS-13	8/19/2024	1	7.87	0.219	0.203	<2.00
SS-NE (BG)	01/16/2025	1	6.71	0.0739	0.0539	<2.00
SS-NW (BG)	01/16/2025	1	6.80	0.302	0.0207	<2.00
SS-S (BG)	01/16/2025	1	8.13	0.277	0.279	<2.00
SS-W (BG)	01/16/2025	1	8.21	0.0452	0.183	<2.00
			delineated	delineated	delineated	resolved
Maximum Root Background Concentration (0 - 3 ft)			8.59	0.425	0.279	

1. Bold faced values exceed the ECMC Table 915-1 limit(s)
2. Blue highlighted soil analytical values indicate a regulatory exceedance

Sample ID	Sample Date	Depth (ft)	pH (Standard Units)	EC (mmhos/cm)	SAR (Standard Units)	Boron (mg/L)
ECMC Table 915-1 Soil Suitability Limits			6 - 8.3	<4	<6	2

NA - Not analyzed

= Source material characterization sample, excavated and transported off site for disposal.

= Material excavated and transported off site for disposal.

TABLE 4
SUMMARY OF METALS IN SOIL CHEMISTRY DATA
PDC 69175
WELLS RANCH 34F-402 TANK BATTERY, WELD COUNTY, COLORADO
REM # 36082

Sample ID	Sample Date	Depth (ft)	Arsenic (mg/kg)	Barium (mg/kg)	Cadmium (mg/kg)	Chromium (VI) (mg/kg)	Copper (mg/kg)	Lead (mg/kg)	Nickel (mg/kg)	Selenium (mg/kg)	Silver (mg/kg)	Zinc (mg/kg)
ECMC Table 915-1 Limits (Residential SSL)			0.68	15000	71	0.3	3100	400	1500	390	390	23000
ECMC Table 915-1 Limits (Protection of Groundwater SSL)			0.29	82	0.38	0.00067	46	14	26	0.26	0.8	370
Waste Char	4/2/2024	1	2.27	80.5	0.342	<0.30	21.9	13.2	6.31	0.334	0.0646	37.7
SS-01	4/19/2024	1	2.14	88.9	0.427	<0.30	21.3	15.5	4.88	0.341	0.0851	43.1
SS-02	4/19/2024	1	2.61	78.3	0.301	<0.30	12.3	19.5	4.53	<0.236	0.0554	42.1
SS-03	4/19/2024	1	1.91	51.9	<0.200	<0.30	6.29	12.6	4.44	<0.260	0.0219	31.9
SS-04	4/19/2024	1	3.46	85.5	0.403	<0.30	22.4	16.2	4.61	0.301	0.0837	43.6
SS-05	4/19/2024	1	2.34	93	0.382	<0.30	22.1	19.0	4.96	0.307	0.0827	46.5
SS-06	4/26/2024	1	3.36	81.8	0.188	<0.135	9.23	17.2	7.76	0.479	<0.0911	53.6
SS-07	4/26/2024	1	2.39	64.4	0.141	0.16	<9.35	15.6	5.42	<0.243	<0.0935	65.8
SS-02-2	5/21/2024	1	3.44	124	0.280	<0.169	22.1	21.3	9.85	0.377	<0.0897	54.4
SS-03-2	5/21/2024	1	2.42	35.2	<0.0872	<0.113	<8.72	3.84	4.43	<0.227	<0.0872	<32.3
SS-06-2	5/21/2024	1	3.49	105	0.308	<0.108	25.3	17.7	9.07	0.499	<0.0929	50.0
SS-07-2	5/21/2024	1	2.86	70.6	0.170	<0.159	<9.38	13.3	6.18	<0.244	<0.0938	<34.7
SS-02-3	6/5/2024	1	2.13	82.0	0.255	<0.122	16.6	11.6	6.55	0.301	<0.0905	36.9
SS-07-3	6/5/2024	1	2.36	101	0.374	<0.178	23	16.2	8.96	0.43	0.105	53.4
BG-N	4/19/2024	1	4.23	68.4	<0.200	<0.30	7.25	7.75	7.66	<0.260	0.0302	29.6
BG-S	4/19/2024	1	2.40	66.1	0.241	<0.30	7.48	7.98	5.91	<0.260	<0.0200	26.2
BG-E	4/19/2024	1	2.44	54.8	<0.200	<0.30	5.24	6.48	5	<0.260	0.0222	20.8
BG-W	4/19/2024	1	2.98	76.8	0.234	<0.30	7.91	8.06	7.77	<0.260	0.0313	31.6
BG-IN	4/19/2024	1	3.22	119	0.57	<0.30	27.6	18.7	11.8	0.402	0.105	61.1
SS-NE (BG)	01/16/2025	1	6.52	86.5	0.23	<0.30	6.89	11.2	6.73	0.269	0.0405	26.8
SS-NW (BG)	01/16/2025	1	3.36	71.4	0.23	<0.30	5.97	8.67	6.08	<0.260	0.0397	21.9
SS-S (BG)	01/16/2025	1	2.26	116	<0.200	<0.30	4.8	5.39	3.67	<0.260	0.0205	16.6
SS-W (BG)	01/16/2025	1	3.39	48.4	<0.200	<0.30	7.69	6.8	3.68	<0.260	0.0245	15.3
			resolved	resolved	resolved	resolved	resolved	resolved	resolved	resolved	resolved	resolved
Maximum Root Zone Background Concentration			6.52	119	0.57			18.7		0.402		
125% Maximum Root Zone Background Concentration			8.15	149	0.71			23.4		0.503		

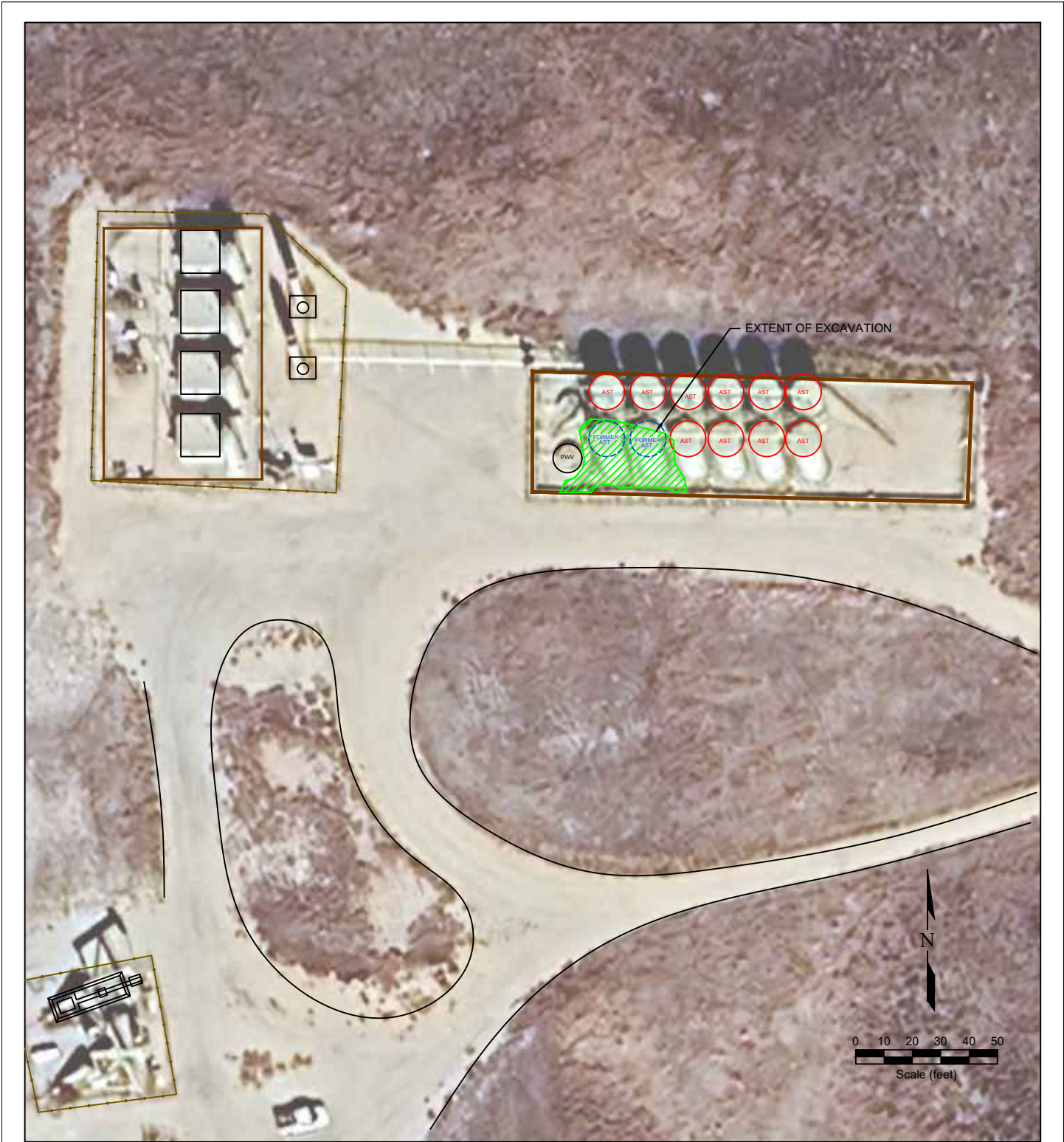
1. Bold values exceed the ECMC Table 915-1 limit(s)
2. Red & blue highlighted soil analytical values indicate an exceedance of the referenced soil screening level (SSL)
* Indicates laboratory minimum detection limit in excess of SSL

Sample ID	Sample Date	Depth (ft)	Arsenic (mg/kg)	Barium (mg/kg)	Cadmium (mg/kg)	Chromium (VI) (mg/kg)	Copper (mg/kg)	Lead (mg/kg)	Nickel (mg/kg)	Selenium (mg/kg)	Silver (mg/kg)	Zinc (mg/kg)
ECMC Table 915-1 Limits (Residential SSL)			0.68	15000	71	0.3	3100	400	1500	390	390	23000
ECMC Table 915-1 Limits (Protection of Groundwater SSL)			0.29	82	0.38	0.00067	46	14	26	0.26	0.8	370

NA - Not analyzed

= Source material characterization sample, excavated and transported off site for disposal.

= Material excavated and transported off site for disposal.



LEGEND

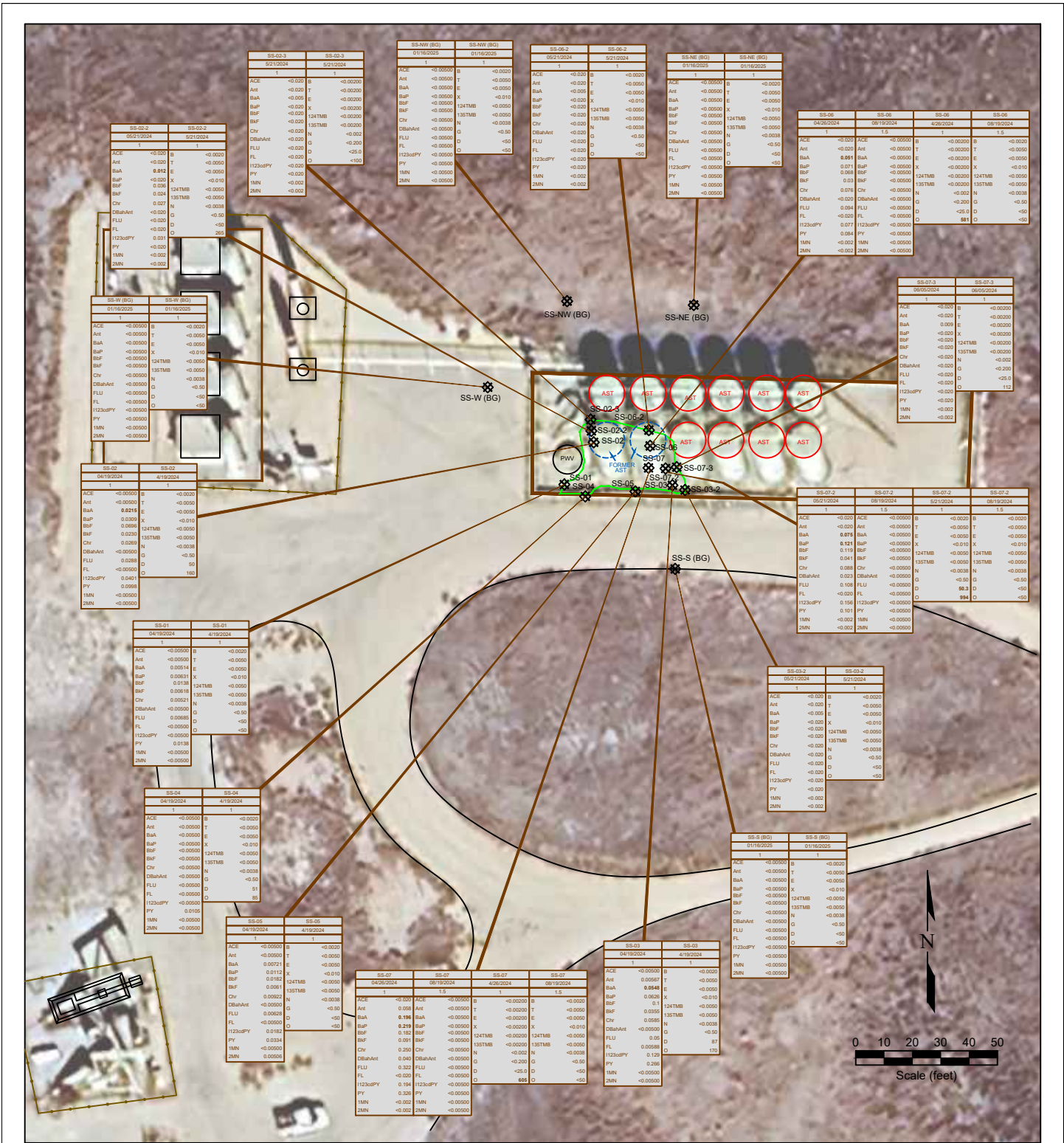
- ABOVE-GROUND STORAGE TANK
- FORMER FACILITY
- EXCAVATED AREA
- EXTENT OF EXCAVATION
- FENCE LINE
- CONTAINMENT BERM
- CONTAINMENT WALL

**Figure 2
SITE MAP**

PDC Energy, Inc. ~ Wells Ranch 34F-212
 SWNW Sec. 34, T6N, R63W, 6th PM
 Weld County, Colorado
 40.447320, °, -104.431945°

Project No. C024-071	Facility # 428807	Initial Spill/Release Report Doc# 403783477
Date 4/9/25	Filename 24071Q	





LEGEND

- SOIL SAMPLE LOCATION
- ABOVE-GROUND STORAGE TANK
- FORMER FACILITY
- EXCAVATED AREA
- EXTENT OF EXCAVATION
- FENCE LINE
- CONTAMINATED BERM
- CONTAINMENT WALL

SAMPLE ID	SAMPLE ID	SAMPLE ID	SAMPLE ID
DATE	DATE	DATE	DATE
DEPTH	DEPTH	DEPTH	DEPTH
ACE <0.0000	ACE NAPHTHENE (mg/kg)	ACE <0.0000	ACE <0.0000
Ant <0.0000	ANTHRACENE (mg/kg)	Ant <0.0000	ANTHRACENE (mg/kg)
BaA <0.0000	BENZO (A) ANTHRACENE (mg/kg)	BaA 0.00721	BENZO (A) ANTHRACENE (mg/kg)
BaP <0.0000	BENZO (A) PYRENE (mg/kg)	BaP 0.0021	BENZO (A) PYRENE (mg/kg)
BbF <0.0000	BENZO (B) FLUORANTHENE (mg/kg)	BbF 0.0138	BENZO (B) FLUORANTHENE (mg/kg)
Chv <0.0000	CHRYSENE (mg/kg)	Chv 0.00619	CHRYSENE (mg/kg)
DBaHant <0.0000	DIBENZO (A,H) ANTHRACENE (mg/kg)	DBaHant <0.0000	DIBENZO (A,H) ANTHRACENE (mg/kg)
FLU <0.0000	FLUORANTHENE (mg/kg)	FLU 0.00685	FLUORANTHENE (mg/kg)
FLU <0.0000	FLUORENE (mg/kg)	FLU <0.0000	FLUORENE (mg/kg)
1123aPPY <0.0000	1,12,3,4-TETRAHYDRO-1,2,3-DIHYDROPYRENE (mg/kg)	1123aPPY 0.162	1,12,3,4-TETRAHYDRO-1,2,3-DIHYDROPYRENE (mg/kg)
FL <0.0000	FLUORENE (mg/kg)	FL <0.0000	FLUORENE (mg/kg)
1MN <0.0000	1-METHYLNAPHTHALENE (mg/kg)	1MN <0.0000	1-METHYLNAPHTHALENE (mg/kg)
2MN <0.0000	2-METHYLNAPHTHALENE (mg/kg)	2MN <0.0000	2-METHYLNAPHTHALENE (mg/kg)
B <0.0000	BENZENE (mg/kg)	B <0.0000	BENZENE (mg/kg)
T <0.0000	TOLUENE (mg/kg)	T <0.0000	TOLUENE (mg/kg)
X <0.0000	ETHYLBENZENE (mg/kg)	X <0.0000	ETHYLBENZENE (mg/kg)
E <0.010	TOTAL XYLENES (mg/kg)	E <0.010	TOTAL XYLENES (mg/kg)
124TMB <0.0000	1,2,4-TRIMETHYLBENZENE (mg/kg)	124TMB <0.0000	1,2,4-TRIMETHYLBENZENE (mg/kg)
135TMB <0.0000	1,3,5-TRIMETHYLBENZENE (mg/kg)	135TMB <0.0000	1,3,5-TRIMETHYLBENZENE (mg/kg)
N <0.0000	NAPHTHALENE (mg/kg)	N <0.0000	NAPHTHALENE (mg/kg)
G <0.50	TPH-GRO (mg/kg)	G <0.50	TPH-GRO (mg/kg)
D <0.50	TPH-ORO (mg/kg)	D <0.50	TPH-ORO (mg/kg)
O <0.50	TPH-ORO (mg/kg)	O <0.50	TPH-ORO (mg/kg)

Figure 3
ORGANIC SOIL CHEMISTRY MAP

PDC Energy, Inc. ~ Wells Ranch 34F-212
 SWNW Sec. 34, T6N, R63W, 6th PM
 Weld County, Colorado
 40.447320, -104.431945°

Project No. C024-071	Facility # 428807	Initial Spill/Release Report Doc# 403783477
Date 4/9/25	Filename 24071Q	

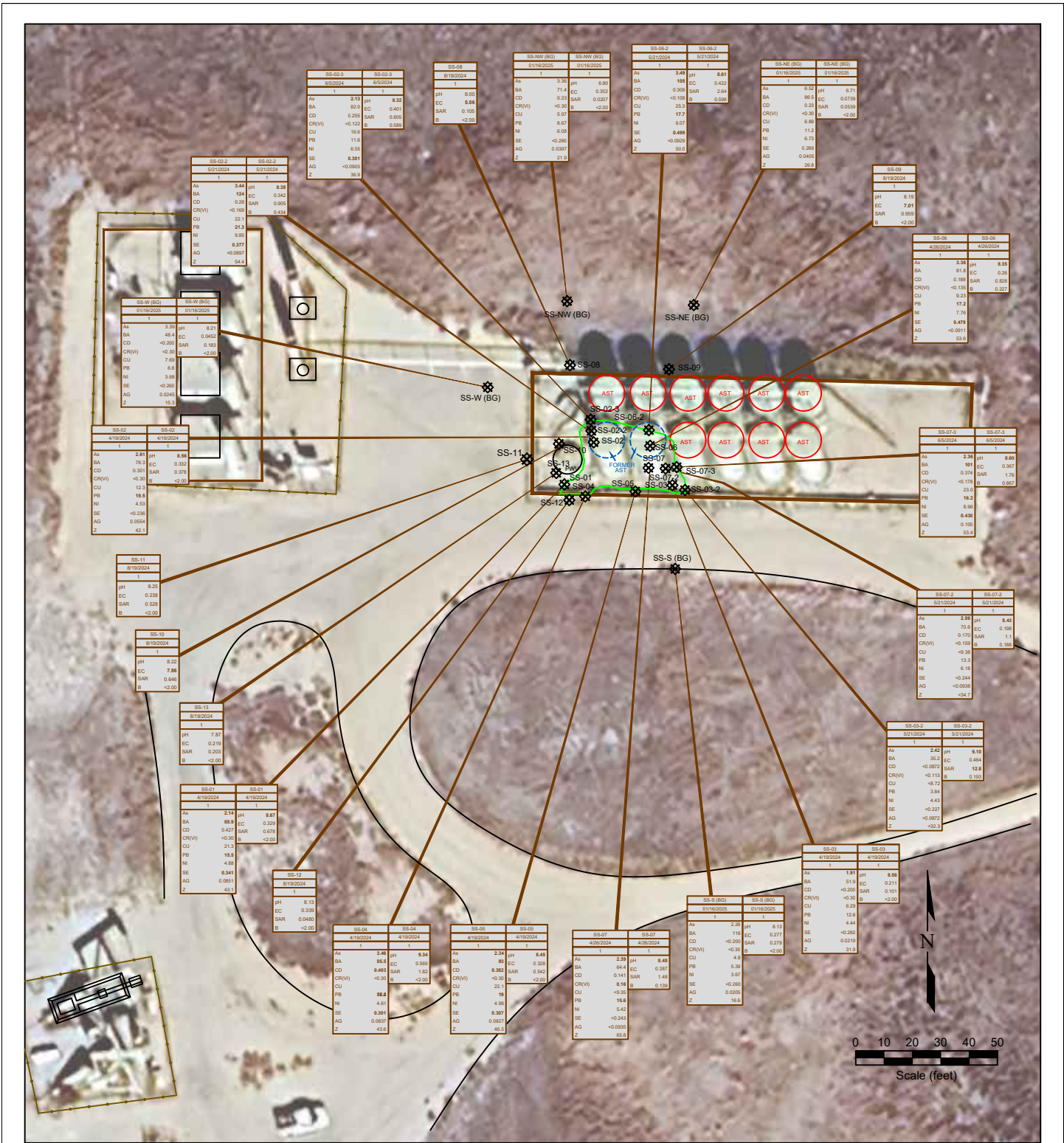


Figure 4
METALS AND INORGANIC SOIL CHEMISTRY MAP

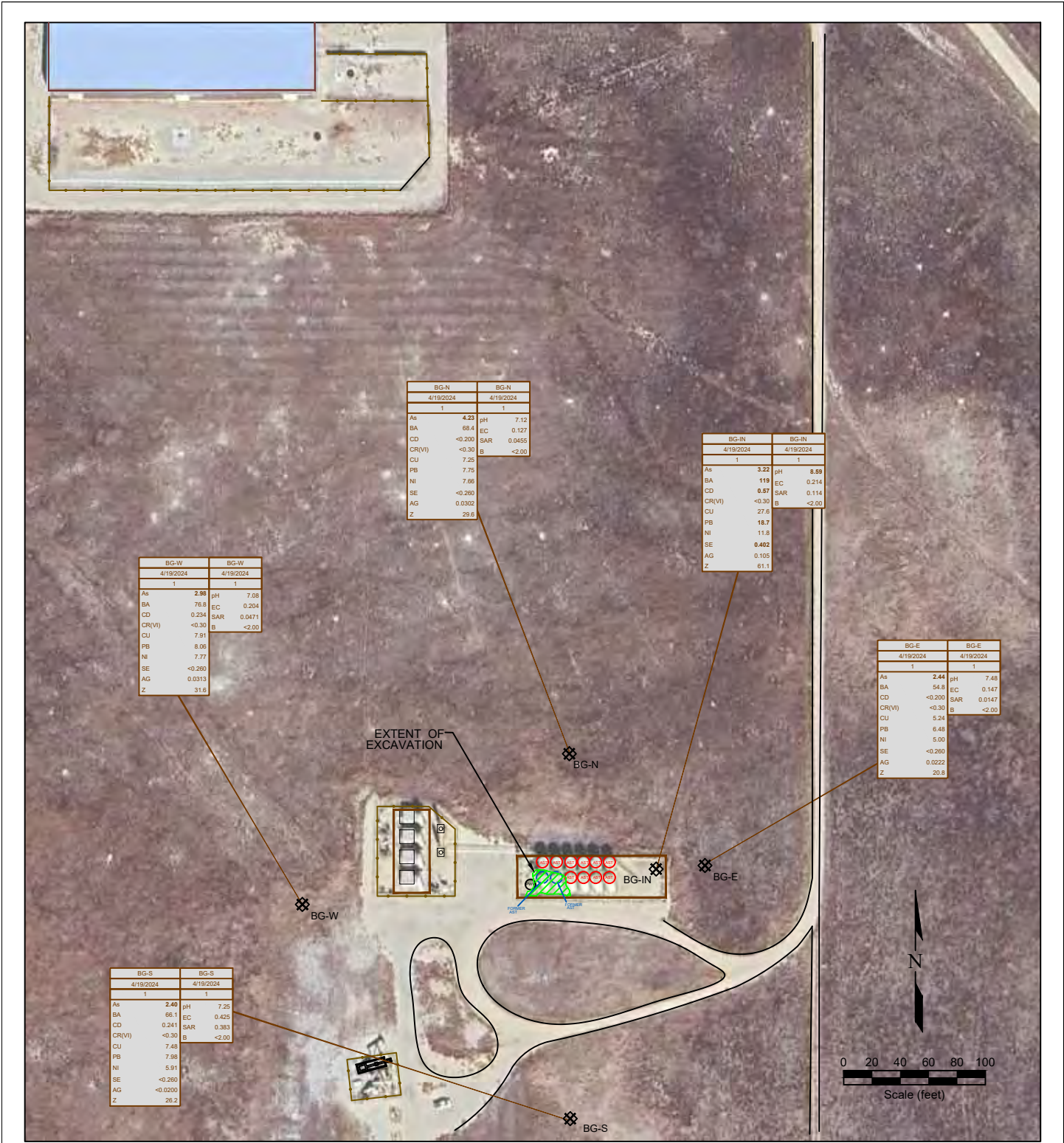
PDC Energy, Inc. ~ Wells Ranch 34F-212
 SWNW Sec. 34, T6N, R63W, 6th PM
 Weld County, Colorado
 40.447320, -104.431945°

SAMPLE ID	SAMPLE DATE	DEPTH (ft)	DEPTH (ft)
As	<0.01	ARSENIC (mg/kg)	
BA	<0.01	BARIUM (mg/kg)	
CD	<0.01	CADMIUM (mg/kg)	
CR(VI)	<0.05	CHROMIUM (mg/kg)	
CU	<0.01	COPPER (mg/kg)	
PB	<0.05	LEAD (mg/kg)	
Ni	<0.05	NICKEL (mg/kg)	
SE	<0.1	SELENIUM (mg/kg)	
AG	<0.05	SILVER (mg/kg)	
Z	<0.05	ZINC (mg/kg)	

SAMPLE ID	SAMPLE DATE	DEPTH (ft)	DEPTH (ft)
pH	<0.05	SAR (units)	
EC	7.06	pH (pH units)	
SAR	<1	EC (micro-mhos)	
B	<16	BORON (mg/L)	

Project No. C024-071	Facility # 428807	Initial Spill/Release Report Doc# 403783477
Date 4/9/25	Filename 24071Q	





BG-N		BG-N	
4/19/2024		4/19/2024	
1	1	1	1
As	4.23	pH	7.12
BA	68.4	EC	0.127
CD	<0.200	SAR	0.0455
CR(VI)	<-0.30	B	<-2.00
CU	7.25		
PB	7.75		
NI	7.66		
SE	<-0.260		
AG	0.0302		
Z	29.6		

BG-IN		BG-IN	
4/19/2024		4/19/2024	
1	1	1	1
As	3.22	pH	8.89
BA	119	EC	0.214
CD	0.57	SAR	0.114
CR(VI)	<-0.30	B	<-2.00
CU	27.6		
PB	18.7		
NI	11.8		
SE	0.402		
AG	0.105		
Z	61.1		

BG-W		BG-W	
4/19/2024		4/19/2024	
1	1	1	1
As	2.86	pH	7.08
BA	76.8	EC	0.204
CD	0.234	SAR	0.0471
CR(VI)	<-0.30	B	<-2.00
CU	7.91		
PB	8.06		
NI	7.77		
SE	<-0.260		
AG	0.0313		
Z	31.6		

BG-E		BG-E	
4/19/2024		4/19/2024	
1	1	1	1
As	2.44	pH	7.48
BA	55.8	EC	0.147
CD	<0.200	SAR	0.0147
CR(VI)	<-0.30	B	<-2.00
CU	5.24		
PB	6.48		
NI	5.00		
SE	<-0.260		
AG	0.0222		
Z	20.8		

BG-S		BG-S	
4/19/2024		4/19/2024	
1	1	1	1
As	2.40	pH	7.25
BA	66.1	EC	0.425
CD	0.241	SAR	0.363
CR(VI)	<-0.30	B	<-2.00
CU	7.48		
PB	7.98		
NI	5.91		
SE	<-0.260		
AG	<-0.0200		
Z	29.2		

LEGEND

- SOIL SAMPLE LOCATION
- ABOVE GROUND STORAGE TANK
- FORMER FACILITY
- EXTENT OF EXCAVATION
- BUILDING
- EXCAVATED AREA
- FENCE LINE
- CONTAINMENT BERM
- CONTAINMENT WALL

SAMPLE	DATE	SAMPLE ID	DATE SAMPLED
As	<-0.01	ARSENIC (mg/kg)	DEPTH (ft)
BA	<-0.01	BARIUM (mg/kg)	DEPTH (ft)
CD	<-0.01	CADMIUM (mg/kg)	DEPTH (ft)
CR(VI)	<-0.01	CHROMIUM (mg/kg)	DEPTH (ft)
CU	<-0.01	COPPER (mg/kg)	DEPTH (ft)
PB	<-0.01	LEAD (mg/kg)	DEPTH (ft)
NI	<-0.01	NICKEL (mg/kg)	DEPTH (ft)
SE	<-0.01	SELENIUM (mg/kg)	DEPTH (ft)
AG	<-0.01	SILVER (mg/kg)	DEPTH (ft)
Z	<-0.01	ZINC (mg/kg)	DEPTH (ft)

**Figure 5
BACKGROUND SAMPLE SOIL CHEMISTRY MAP**

PDC Energy, Inc. ~ Wells Ranch 34F-212
 SWNW Sec. 34, T6N, R63W, 6th PM
 Weld County, Colorado
 40.447320, -104.431945°

Project No. C024-071	Facility # 428807	Initial Spill/Release Report Doc# 403783477
Date 4/9/25	Filename 24071Q	