



FIGURES

Figure 1: Topographic Site Location Map

Figure 2: Aerial Site Location Map

Figure 3: Initial Soil Analytical Map

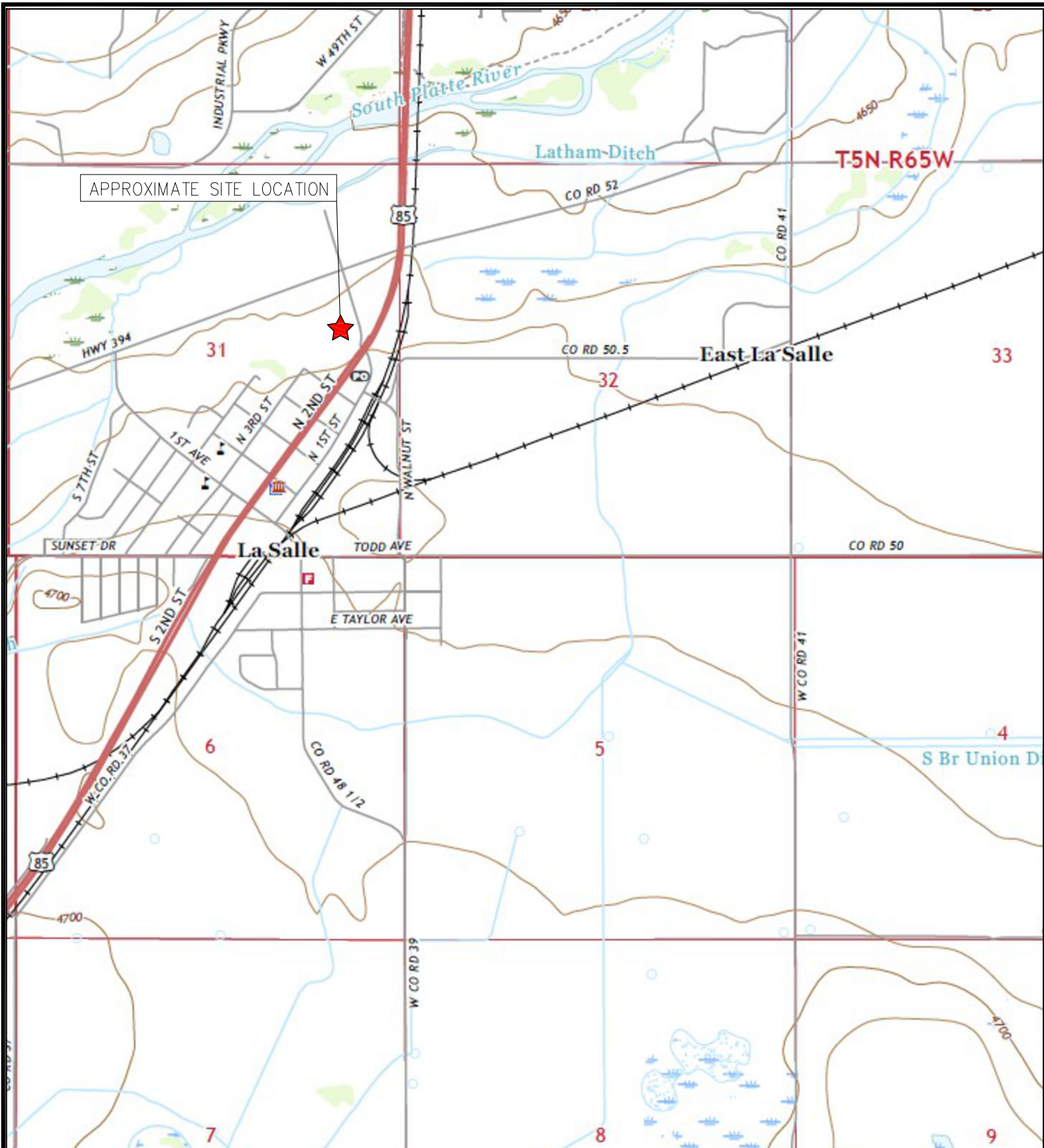
Figure 4: Initial Polycyclic Aromatic Hydrocarbons Map

Figure 5: Soil Boring Soil Analytical Map

Figure 6: Soil Boring Polycyclic Aromatic Hydrocarbons Map

Figure 7: Soil Boring Metals in Soil Map

Figure 8: Groundwater Analytical Map



APPROXIMATE SITE LOCATION

TOPOGRAPHIC SITE LOCATION MAP
 HAYES FEDERAL #31-8H5
 CLOSURE ASSESSMENT
 40.357388 / -104.699701
 SE¼ NE¼ SEC.31 T5N R65W 6PM
 WELD COUNTY, COLORADO
 SPILL ID 480186
 REMEDIATION # 19598



EAGLE
 ENVIRONMENTAL
 CONSULTING, LLC

8000 W 44th Ave, Wheat Ridge, CO 80033
 Ph: 303-433-0479 • F: 303-325-5449

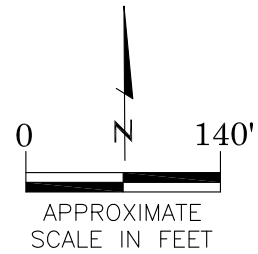
SOURCE: USGS 7.5 MINUTE TOPOGRAPHIC MAP,
 LA SALLE, CO QUADRANGLE 2022

FIGURE 1



LEGEND

 FORMER HAYES FEDERAL #31-8H5 TANK BATTERY



AERIAL SITE LOCATION MAP
 HAYES FEDERAL #31-8H5
 SITE ASSESSMENT
 40.357388 / -104.699701
 SE¼ NE¼ SEC.31 T5N R65W 6PM
 WELD COUNTY, COLORADO
 SPILL ID 480186
 REMEDIATION # 19598

DRAWN BY:

AMN

FIGURE NO.

2



EAGLE
 ENVIRONMENTAL
 CONSULTING, INC.

8000 W 44th Ave, Wheat Ridge, CO 80033
 Ph: 303-433-0479 • F: 303-325-5449



SS-01@0.5'
06/14/21
0.5'
B = <0.00200
T = <0.00200
E = <0.00200
X = <0.00200
G = <0.200
D = <50.0
R = <200
1,2,4-TMB = <0.00200
1,3,5-TMB = <0.00200

SS-02@0.5'
06/14/21
0.5'
B = <0.00200
T = <0.00200
E = <0.00200
X = <0.00200
G = <0.200
D = <50.0
R = <200
1,2,4-TMB = <0.00200
1,3,5-TMB = <0.00200

SS-04@0.5'
06/14/21
0.5'
B = <0.00200
T = <0.00200
E = <0.00200
X = <0.00200
G = <0.200
D = <50.0
R = <200
1,2,4-TMB = <0.00200
1,3,5-TMB = <0.00200

SS-03@0.5'
06/14/21
0.5'
B = <0.00200
T = <0.00200
E = <0.00200
X = <0.00200
G = <0.200
D = <50.0
R = <200
1,2,4-TMB = <0.00200
1,3,5-TMB = <0.00200

SS-05@0.5'
06/14/21
0.5'
B = <0.00200
T = <0.00200
E = <0.00200
X = <0.00200
G = <0.200
D = <50.0
R = <200
1,2,4-TMB = <0.00200
1,3,5-TMB = <0.00200

LEGEND

- APPROXIMATE SCRAPE/ASSESSMENT BOUNDARIES
- APPROXIMATE LOCATION OF SOIL SAMPLES SUBMITTED FOR LABORATORY ANALYSIS

PARAMETERS

SAMPLE LOCATION	
DATE	
DEPTH (FEET)	
B	= BENZENE (mg/kg)
T	= TOLUENE (mg/kg)
E	= ETHYLBENZENE (mg/kg)
X	= TOTAL XYLENES (mg/kg)
G	= TPH-GRO (mg/kg)
D	= TPH-DRO (mg/kg)
R	= TPH-RRO (mg/kg)
1,2,4-TMB	= 1,2,4 TRIMETHYLBENZENE (mg/kg)
1,3,5-TMB	= 1,3,5 TRIMETHYLBENZENE (mg/kg)

mg/kg = MILLIGRAMS PER KILOGRAM

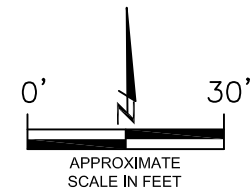
TPH-GRO = TOTAL PETROLEUM HYDROCARBONS - GASOLINE RANGE ORGANICS
 TPH-DRO = TOTAL PETROLEUM HYDROCARBONS - DIESEL RANGE ORGANICS
 TPH-RRO = TOTAL PETROLEUM HYDROCARBONS - RESIDUAL RANGE ORGANICS

NOTE:

VALUES PRESENTED WITH A LESS THAN SYMBOL (<) DID NOT CONTAIN CONCENTRATIONS AT OR ABOVE LABORATORY DETECTION LIMITS.

VALUES PRESENTED IN **BOLD** VALUES CONTAIN CONCENTRATIONS EXCEEDING ECMC TABLE 915-1 REGULATORY LIMITS.

ECMC = ENERGY & CARBON MANAGEMENT COMMISSION



SOIL ANALYTICAL MAP
 HAYES FEDERAL #31-8H5
 SITE ASSESSMENT
 40.357388 / -104.699701
 SE¼ NE¼ SEC.31 T5N R65W 6PM
 WELD COUNTY, COLORADO
 SPILL ID 480186
 REMEDIATION # 19598

DRAWN BY:
AMN

FIGURE NO.
3

EAGLE
ENVIRONMENTAL
CONSULTING, LLC

8000 W 44th Ave, Wheat Ridge, CO 80033
 Ph: 303-433-0479 • F: 303-325-5449



LEGEND

- APPROXIMATE SCRAPE/ASSESSMENT BOUNDARIES
- APPROXIMATE LOCATION OF SOIL SAMPLES SUBMITTED FOR LABORATORY ANALYSIS

PARAMETERS

SAMPLE LOCATION
DATE SAMPLE COLLECTED
APPROXIMATE DEPTH

POLYCYCLIC AROMATIC HYDROCARBONS (PAHS)

NOTE:
CONCENTRATIONS PRESENTED IN mg/kg

mg/kg = MILLIGRAMS PER KILOGRAM

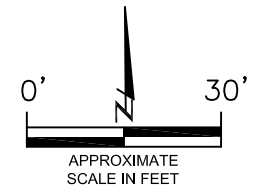
MDL = MINIMUM DETECTION LIMIT

NOTE:
VALUES PRESENTED WITH A LESS THAN SYMBOL (<) DID NOT CONTAIN CONCENTRATIONS AT OR ABOVE LABORATORY MDL AND/OR REPORTING LIMITS.

VALUES PRESENTED IN **BOLD** TYPEFACE EXCEED ECMC TABLE 915-1 REGULATORY LIMITS FOR THAT COMPOUND.

VALUES PRESENTED WITH AN ASTERISK (*) EXCEED ECMC TABLE 915-1 PROTECTION OF GROUNDWATER SOIL SCREENING LEVELS.

ECMC = ENERGY & CARBON MANAGEMENT COMMISSION



POLYCYCLIC AROMATIC HYDROCARBONS MAP
HAYES FEDERAL #31-8H5
SITE ASSESSMENT
40.357388 / -104.699701
SE¼ NE¼ SEC.31 T5N R65W 6PM
WELD COUNTY, COLORADO
SPILL ID 480186
REMIEDIATION # 19598

DRAWN BY:

AMN

FIGURE NO.

4



EAGLE
ENVIRONMENTAL
CONSULTING, LLC
8000 W 44th Ave, Wheat Ridge, CO 80033
Ph: 303-433-0479 • F: 303-325-5449



LEGEND

- APPROXIMATE SCRAPE/ASSESSMENT BOUNDARIES
- APPROXIMATE SOIL BORING LOCATIONS

PARAMETERS

SAMPLE LOCATION	
DATE	06/30/21
DEPTH (FEET)	0-2'
B	= BENZENE (mg/kg)
T	= TOLUENE (mg/kg)
E	= ETHYLBENZENE (mg/kg)
X	= TOTAL XYLENES (mg/kg)
G	= TPH-GRO (mg/kg)
D	= TPH-DRO (mg/kg)
R	= TPH-RRO (mg/kg)
1,2,4-TMB	= 1,2,4 TRIMETHYLBENZENE (mg/kg)
1,3,5-TMB	= 1,3,5 TRIMETHYLBENZENE (mg/kg)
Brn	= BORON (mg/L)
EC	= SPECIFIC CONDUCTANCE (mmhos/cm)
SAR	= SODIUM ADSORPTION RATIO
pH	= pH (pH UNITS)

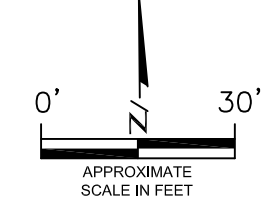
mg/kg = MILLIGRAMS PER KILOGRAM
 mg/L = MILLIGRAMS PER LITER
 NA - NOT ANALYZED

TPH-GRO = TOTAL PETROLEUM HYDROCARBONS - GASOLINE RANGE ORGANICS
 TPH-DRO = TOTAL PETROLEUM HYDROCARBONS - DIESEL RANGE ORGANICS
 TPH-RRO = TOTAL PETROLEUM HYDROCARBONS - RESIDUAL RANGE ORGANICS

NOTE:
 VALUES PRESENTED WITH A LESS THAN SYMBOL (<) DID NOT CONTAIN CONCENTRATIONS AT OR ABOVE LABORATORY DETECTION LIMITS.

VALUES PRESENTED IN **BOLD** VALUES CONTAIN CONCENTRATIONS EXCEEDING ECOMC TABLE 915-1 REGULATORY LIMITS.

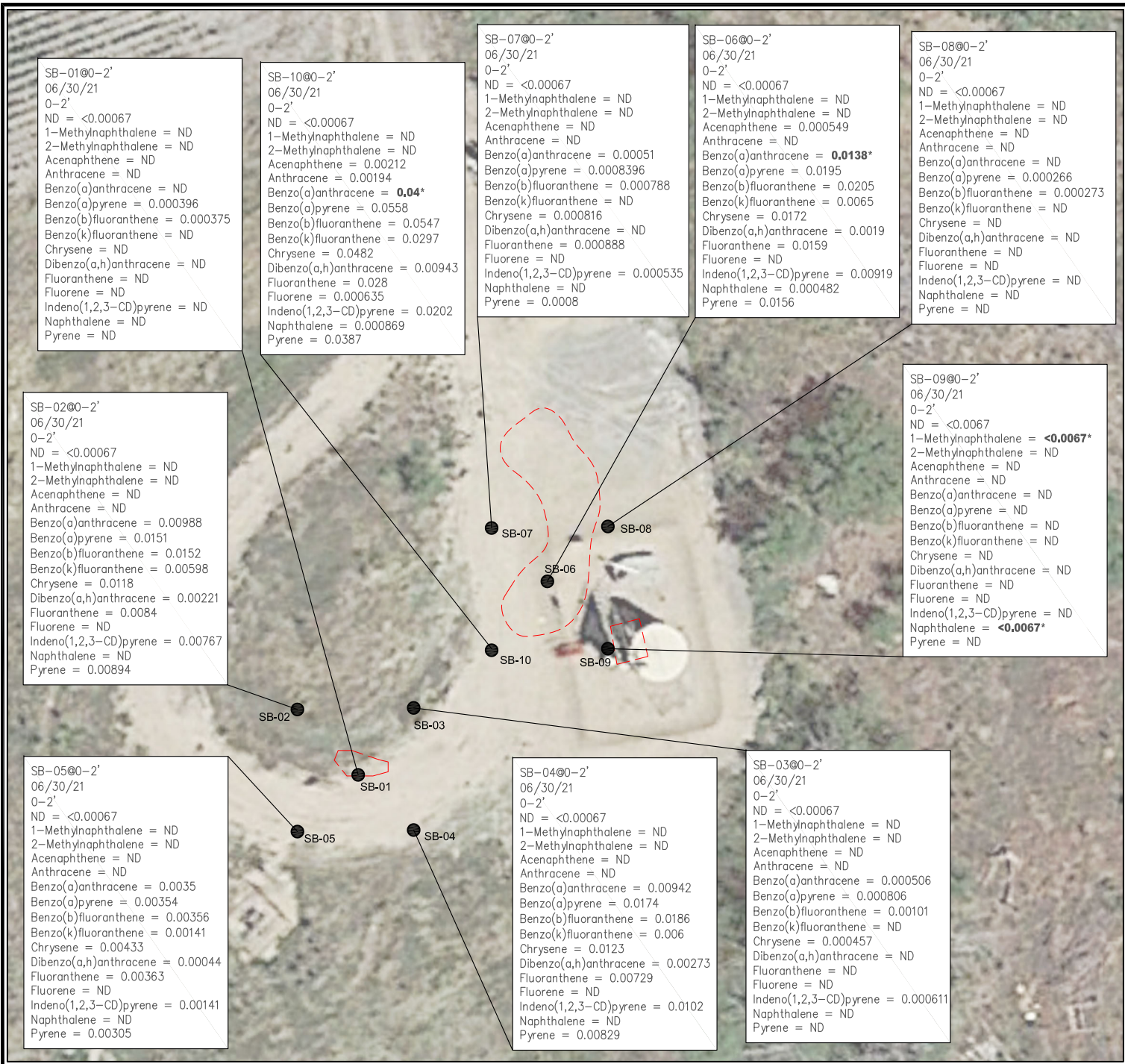
ECMC = ENERGY & CARBON MANAGEMENT COMMISSION



SOIL BORING SOIL ANALYTICAL MAP
 HAYES FEDERAL #31-8H5
 SITE ASSESSMENT
 40.357388 / -104.699701
 SE ¼ NE ¼ SEC.31 T5N R65W 6PM
 WELD COUNTY, COLORADO
 SPILL ID 480186
 REMEDIATION # 19598

DRAWN BY:
 AMN
 FIGURE NO.
 5

EAGLE ENVIRONMENTAL CONSULTING, LLC
 8000 W 44th Ave, Wheat Ridge, CO 80033
 Ph: 303-433-0479 • F: 303-325-5449



LEGEND

--- APPROXIMATE SCRAPE/ASSESSMENT BOUNDARIES

● APPROXIMATE SOIL BORING LOCATIONS

PARAMETERS

SAMPLE LOCATION
DATE SAMPLE COLLECTED
APPROXIMATE DEPTH

POLYCYCLIC AROMATIC HYDROCARBONS (PAHs)

NOTE:
CONCENTRATIONS PRESENTED IN mg/kg

mg/kg = MILLIGRAMS PER KILOGRAM

MDL = MINIMUM DETECTION LIMIT

ND = NON-DETECT

NOTE:
VALUES PRESENTED WITH A LESS THAN SYMBOL (<) DID NOT CONTAIN CONCENTRATIONS AT OR ABOVE LABORATORY MDL AND/OR REPORTING LIMITS.

VALUES PRESENTED IN **BOLD** TYPEFACE EXCEED ECMC TABLE 915-1 REGULATORY LIMITS FOR THAT COMPOUND.

VALUES PRESENTED WITH AN ASTERISK (*) EXCEED ECMC TABLE 915-1 PROTECTION OF GROUNDWATER SOIL SCREENING LEVELS.

ECMC = ENERGY & CARBON MANAGEMENT COMMISSION

0' 30'

APPROXIMATE SCALE IN FEET

SOIL BORING PAH MAP
HAYES FEDERAL #31-8H5
SITE ASSESSMENT
40.357388 / -104.699701
SE¼ NE¼ SEC.31 T5N R65W 6PM
WELD COUNTY, COLORADO
SPILL ID 480186
REMIEDIATION # 19598

DRAWN BY: AMN	<p>EAGLE ENVIRONMENTAL CONSULTING, LLC 8000 W 44th Ave, Wheat Ridge, CO 80033 Ph: 303-433-0479 • F: 303-325-5449</p>
FIGURE NO. 6	



BACKGROUND-01@0-2'
06/30/21
0-2'

Arsenic = 0.818***
Barium = NA
Cadmium = NA
Chromium (VI) = <1**
Copper = NA
Lead = NA
Nickel = NA
Selenium = NA
Silver = NA
Zinc = NA

BACKGROUND-01

SB-05@0-2'
06/30/21
0-2'

Arsenic = 0.783***
Barium = 44.4
Cadmium = 0.102
Chromium (VI) = <1.02**
Copper = 5.09
Lead = 6.38
Nickel = 3.86
Selenium = 0.162
Silver = 0.027
Zinc = 23.3

LEGEND

- - - APPROXIMATE SCRAPE/ASSESSMENT BOUNDARIES
- APPROXIMATE SOIL BORING LOCATIONS

PARAMETERS

SAMPLE LOCATION
DATE SAMPLE COLLECTED
APPROXIMATE DEPTH
Barium = (mg/kg)
Cadmium = (mg/kg)
Chromium (VI) = (mg/kg)
Copper = (mg/kg)
Lead = (mg/kg)
Nickel = (mg/kg)
Selenium = (mg/kg)
Silver = (mg/kg)
Zinc = (mg/kg)

mg/kg = MILLIGRAMS PER KILOGRAM

NA = NOT ANALYZED

NOTE:

VALUES PRESENTED WITH A LESS THAN SYMBOL (<) DID NOT CONTAIN CONCENTRATIONS AT OR ABOVE LABORATORY DETECTION LIMITS

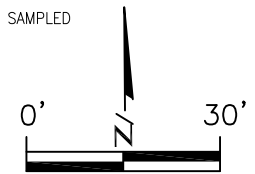
VALUES PRESENTED IN **BOLD** EXCEED ECMC TABLE 915-1 "PROTECTION OF GROUNDWATER SOIL SCREENING LEVELS" FOR THAT COMPOUND

**ACHIEVABLE PRACTICAL QUANTITATIVE LIMITS FOR HEXAVALENT CHROMIUM (Cr VI) IN SOILS IS IN THE RANGE OF 0.1 TO 1 mg/kg. (1) SAMPLE REQUIRED DILUTION, RAISING LABORATORY REPORTING AND DETECTION LIMITS - SAMPLE NON-DETECT.

***ARSENIC IS NATURALLY OCCURRING IN COLORADO. LOCAL CLEAN-UP LEVEL (1.02 mg/kg) BASED ON BACKGROUND*1.25.

ECMC = ENERGY & CARBON MANAGEMENT COMMISSION

(NS) - NOT SAMPLED



APPROXIMATE SCALE IN FEET

METALS IN SOIL MAP
HAYES FEDERAL #31-8H5
SITE ASSESSMENT
40.357388 / -104.699701
SE¼ NE¼ SEC.31 T5N R65W 6PM
WELD COUNTY, COLORADO
SPILL ID 480186
REMEDATION # 19598

DRAWN BY:
AMN

FIGURE NO.

7

EAGLE
ENVIRONMENTAL
CONSULTING, LLC
8000 W 44th Ave, Wheat Ridge, CO 80033
Ph: 303-433-0479 • F: 303-325-5449



SB-01
 07/06/21
 B = <1.00
 T = <1.00
 E = <1.00
 X = <1.00
 N = <4.00
 1,2,4-TMB = <1.00
 1,3,5-TMB = <1.00

SB-06
 07/06/21
 B = <1.00
 T = <1.00
 E = <1.00
 X = <1.00
 N = <4.00
 1,2,4-TMB = <1.00
 1,3,5-TMB = <1.00

LEGEND

- - - APPROXIMATE SCRAPE/ASSESSMENT BOUNDARIES
- APPROXIMATE TEMPORARY WELL LOCATIONS

PARAMETERS

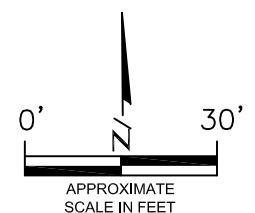
GROUNDWATER SAMPLE LOCATION
 DATE
 B = BENZENE (µg/L)
 T = TOLUENE (µg/L)
 E = ETHYLBENZENE (µg/L)
 X = TOTAL XYLENES (µg/L)
 N = NAPHTHALENE (µg/L)
 1,2,4-TMB = 1,2,4-TRIMETHYLBENZENE (µg/L)
 1,3,5-TMB = 1,3,5-TRIMETHYLBENZENE (µg/L)

µg/L = MILLIGRAMS PER LITER

NOTES:
 VALUES PRESENTED WITH A LESS THAN SYMBOL (<) DID NOT CONTAIN CONCENTRATIONS AT OR ABOVE THE LABORATORY REPORTING LIMIT.

VALUES PRESENTED IN **BOLD** EXCEEDED THE ECMC TABLE 915-1 REGULATORY LIMITS FOR THAT COMPOUND.

ECMC = ENERGY & CARBON MANAGEMENT COMMISSION



GROUNDWATER ANALYTICAL MAP
 HAYES FEDERAL #31-8H5
 SITE ASSESSMENT
 40.357388 / -104.699701
 SE¼ NE¼ SEC.31 T5N R65W 6PM
 WELD COUNTY, COLORADO
 SPILL ID 480186
 REMEDIATION # 19598

DRAWN BY:
 AMN
 FIGURE NO.
 8

EAGLE
 ENVIRONMENTAL
 CONSULTING, LLC
 8000 W 44th Ave, Wheat Ridge, CO 80033
 Ph: 303-433-0479 • F: 303-325-5449



TABLES

Table 1: Photoionization Detector Reading Summary

Table 2: Soil Analytical Results Summary

Table 3: Polycyclic Aromatic Hydrocarbons Summary

Table 4: Metals Analytical Results Summary

Table 5: Groundwater Analytical Results Summary

TABLE 1
PHOTOIONIZATION DETECTOR READING SUMMARY
HAYES FEDERAL #31-8H5
SITE ASSESSMENT
40.357388 / -104.699701
SE¼ NE¼ SEC.31 T5N R65W 6PM
WELD COUNTY, COLORADO
SPILL ID 480186
REMEDATION # 19598

Sample Location (Latitude/Longitude)	Date	Approximate Depth (feet)	PID Reading (ppm-v)	Lab Submission (Y/N)
SS-01 @ 0.5' (40.357467 / -104.699690)	06/14/21	0.5	7.1	Y
SS-02 @ 0.5' (40.357400 / -104.699692)	06/14/21	0.5	8.0	Y
SS-03 @ 0.5' (40.357297 / -104.699834)	06/14/21	0.5	4.7	Y
SS-04 @ 0.5' (40.357280 / -104.699955)	06/14/21	0.5	4.2	Y
SS-05 @ 0.5' (40.357366 / -104.699632)	06/14/21	0.5	3.8	Y
SB-01 @ 0-2' (40.357296 / -104.699834)	06/30/21	0-2	4.4	Y
SB-02 @ 0-2' (40.357331 / -104.699874)	06/30/21	0-2	2.9	Y
SB-03 @ 0-2' (40.357330 / -104.699788)	06/30/21	0-2	2.0	Y
SB-04 @ 0-2' (40.357263 / -104.699787)	06/30/21	0-2	0.9	Y
SB-05 @ 0-2' (40.357259 / -104.699877)	06/30/21	0-2	6.1	Y
SB-06 @ 0-2' (40.357401 / -104.699692)	06/30/21	0-2	1.4	Y
SB-07 @ 0-2' (40.357429 / -104.699740)	06/30/21	0-2	1.8	Y
SB-08 @ 0-2' (40.357433 / -104.699647)	06/30/21	0-2	2.9	Y
SB-09 @ 0-2' (40.357362 / -104.699646)	06/30/21	0-2	5.6	Y
SB-10 @ 0-2' (40.357364 / -104.699734)	06/30/21	0-2	3.7	Y
Background-01 @ 2' (40.357452 / -104.700023)	06/30/21	2	3.5	Y
(Y/N) = Yes or No ppm-v = parts per million by volume PID - photoionization detector				

TABLE 2
SOIL ANALYTICAL RESULTS SUMMARY
HAYES FEDERAL #31-8H5
SITE ASSESSMENT
40.357388 / -104.699701
SE¼ NE¼ SEC.31 T5N R65W 6PM
WELD COUNTY, COLORADO
SPILL ID 480186
REMEDIAION # 19598

Sample Location (Latitude/Longitude)	Date	Approximate Depth (feet)	PID Reading (ppm-v)	Benzene (mg/kg)	Toluene (mg/kg)	Ethylbenzene (mg/kg)	Total Xylenes (mg/kg)	TPH-GRO (mg/kg)	TPH-DRO (mg/kg)	TPH-RRO (mg/kg)	1,2,4- Trimethylbenzene (mg/kg)	1,3,5- Trimethylbenzene (mg/kg)	Boron (mg/L)	Specific Conductance (mmhos/cm)	pH (pH units)	SAR	
ECMC Table 915-1 Residential Screening Levels				1.2	490	5.8	58	500			30	27	2	<4	6-8.3	<6	
ECMC Table 915-1 Protection of Groundwater Soil Screening Levels				0.0026	0.69	0.78	9.9	--			0.0081	0.0087	--	--	--	--	--
SS-01 @ 0.5' (40.357467 / -104.699690)	06/14/21	1	7.1	<0.00200	<0.00200	<0.00200	<0.00200	<0.200	<50.0	<200	<0.00200	<0.00200	NA	NA	NA	NA	
SS-02 @ 0.5' (40.357400 / -104.699692)	06/14/21	1	8.0	<0.00200	<0.00200	<0.00200	<0.00200	<0.200	<50.0	<200	<0.00200	<0.00200	NA	NA	NA	NA	
SS-03 @ 0.5' (40.357297 / -104.699834)	06/14/21	1	4.7	<0.00200	<0.00200	<0.00200	<0.00200	<0.200	<50.0	<200	<0.00200	<0.00200	NA	NA	NA	NA	
SS-04 @ 0.5' (40.357280 / -104.699955)	06/14/21	1	4.2	<0.00200	<0.00200	<0.00200	<0.00200	<0.200	<50.0	<200	<0.00200	<0.00200	NA	NA	NA	NA	
SS-05 @ 0.5' (40.357366 / -104.699632)	06/14/21	1	3.8	<0.00200	<0.00200	<0.00200	<0.00200	<0.200	<50.0	<200	<0.00200	<0.00200	NA	NA	NA	NA	
SB-01 @ 0-2' (40.357296 / -104.699834)	06/30/21	0-2	4.4	<0.00200	<0.00200	<0.00200	<0.00200	<0.200	<50.0	<200	<0.00200	<0.00200	0.279	0.552	8.13	3.36	
SB-02 @ 0-2' (40.357331 / -104.699874)	06/30/21	0-2	2.9	<0.00200	<0.00200	<0.00200	<0.00200	<0.200	<50.0	<200	<0.00200	<0.00200	1.77	1.37	8.14	10.6	
SB-03 @ 0-2' (40.357330 / -104.699788)	06/30/21	0-2	2.0	<0.00200	<0.00200	<0.00200	<0.00200	<0.200	<50.0	<200	<0.00200	<0.00200	0.419	0.468	8.02	3.35	
SB-04 @ 0-2' (40.357263 / -104.699787)	06/30/21	0-2	0.9	<0.00200	<0.00200	<0.00200	<0.00200	<0.200	<50.0	<200	<0.00200	<0.00200	1.87	1.69	8.22	8.01	
SB-05 @ 0-2' (40.357259 / -104.699877)	06/30/21	0-2	6.1	<0.00200	<0.00200	<0.00200	<0.00200	<0.200	<50.0	<200	<0.00200	<0.00200	0.723	1.32	8.23	4.94	
SB-06 @ 0-2' (40.357401 / -104.699692)	06/30/21	0-2	1.4	<0.00200	<0.00200	<0.00200	<0.00200	<0.200	<50.0	<200	<0.00200	<0.00200	0.359	1.20	7.93	3.03	
SB-07 @ 0-2' (40.357429 / -104.699740)	06/30/21	0-2	1.8	<0.00200	<0.00200	<0.00200	<0.00200	<0.200	<50.0	<200	<0.00200	<0.00200	1.73	1.16	8.17	6.32	
SB-08 @ 0-2' (40.357433 / -104.699647)	06/30/21	0-2	2.9	<0.00200	<0.00200	<0.00200	<0.00200	<0.200	<50.0	<200	<0.00200	<0.00200	1.69	1.08	7.97	3.07	
SB-09 @ 0-2' (40.357362 / -104.699646)	06/30/21	0-2	5.6	<0.00200	<0.00200	<0.00200	<0.00200	<0.200	<50.0	<200	<0.00200	<0.00200	1.12	0.913	7.92	2.62	
SB-10 @ 0-2' (40.357364 / -104.699734)	06/30/21	0-2	3.7	<0.00200	<0.00200	<0.00200	<0.00200	<0.200	<50.0	<200	<0.00200	<0.00200	0.884	1.14	8.18	7.71	
Background-01 @ 2' (40.357452 / -104.700023)	06/30/21	2	3.5	NA	NA	NA	NA	NA	NA	NA	NA	NA	NA	NA	NA	0.359	

ECMC = Energy & Carbon Management Commission
 mg/kg = milligrams per kilogram TPH-GRO = Total Petroleum Hydrocarbons - Gasoline Range Organics NA = Not Analyzed
 mmhos/cm = millimhos per centimeter TPH-DRO = Total Petroleum Hydrocarbons - Diesel Range Organics
 SAR = Sodium Adsorption Ratio TPH-RRO = Total Petroleum Hydrocarbons - Residual Range Organics
 ppm-v = parts per million by volume
 PID - photoionization detector

Notes: Values presented with a less than symbol (<) did not contain concentrations at or above the laboratory reporting limit or minimum detection levels.
 Values presented in **BOLD** contained concentrations exceeding applicable ECMC Table 915-1 Regulatory Limits.

TABLE 3
 PAHS ANALYTICAL RESULTS SUMMARY
 HAYES FEDERAL #31-8H5
 SITE ASSESSMENT
 40.357388 / -104.699701
 SE¼ NE¼ SEC.31 T5N R65W 6PM
 WELD COUNTY, COLORADO
 SPILL ID 480186
 REMEDIATION # 19598

Sample Location (Latitude/Longitude)	Date	Approximate Depth (feet)	PID Reading (ppm-v)	1-Methyl- naphthalene (mg/kg)	2-Methyl- naphthalene (mg/kg)	Acenaphthene (mg/kg)	Anthracene (mg/kg)	Benzo(a)-anthracene (mg/kg)	Benzo(a)- pyrene (mg/kg)	Benzo(b)- fluoranthene (mg/kg)	Benzo(k)- fluoranthene (mg/kg)	Chrysene (mg/kg)	Dibenzo(a,h)- anthracene (mg/kg)	Fluoranthene (mg/kg)	Fluorene (mg/kg)	Indeno(1,2,3- cd)-pyrene (mg/kg)	Naphthalene (mg/kg)	Pyrene (mg/kg)
ECMC Table 915-1 Residential Screening Levels				18	24	360	1,800	1.1	0.11	1.1	11	110	0.11	240	240	1.1	2	180
ECMC Table 915-1 Protection of Groundwater Soil Screening Levels				0.006	0.019	0.55	5.8	0.011	0.24	0.3	2.9	9	0.096	8.9	0.54	0.98	0.0038	1.3
SS-01 @ 0.5' (40.357467 / -104.699690)	06/14/21	0.5	7.1	<0.00067	<0.00067	<0.00067	<0.00067	0.00338	0.00518	0.00568	0.00223	0.00405	0.00086	0.00255	<0.00067	0.00329	<0.00067	0.00429
SS-02 @ 0.5' (40.357400 / -104.699692)	06/14/21	0.5	8.0	<0.0067*	<0.0067	<0.0067	<0.0067	0.0606*	0.0968	0.111	0.0382	0.0679	0.0149	0.0496	<0.0067	0.0561	<0.0067*	0.0706
SS-03 @ 0.5' (40.357297 / -104.699834)	06/14/21	0.5	4.7	0.000518	0.000699	0.00362	0.0018	0.0884*	0.14	0.154	0.0497	0.0958	0.0246	0.037	0.00429	0.0966	0.00102	0.0738
SS-04 @ 0.5' (40.357280 / -104.699555)	06/14/21	0.5	4.2	<0.00067	<0.00067	<0.00067	<0.00067	0.00741	0.012	0.0127	0.00456	0.00871	0.00184	0.0056	<0.00067	0.00741	0.000627	0.00851
SS-05 @ 0.5' (40.357366 / -104.699632)	06/14/21	0.5	3.8	<0.00067	<0.00067	<0.00067	<0.00067	0.00243	0.00411	0.00493	0.00203	0.00324	0.000701	0.00391	<0.00067	0.00269	<0.00067	0.00414
SB-01 @ 0.2' (40.357296 / -104.699834)	06/30/21	0.2	4.4	<0.00067	<0.00067	<0.00067	<0.00067	<0.00067	0.000396	0.000375	<0.00067	<0.00067	<0.00067	<0.00067	<0.00067	<0.00067	<0.00067	<0.00067
SB-02 @ 0.2' (40.357331 / -104.699874)	06/30/21	0.2	2.9	<0.00067	<0.00067	<0.00067	<0.00067	0.00988	0.0151	0.0152	0.00598	0.0118	0.00221	0.0084	<0.00067	0.00767	<0.00067	0.00894
SB-03 @ 0.2' (40.357330 / -104.699788)	06/30/21	0.2	2.0	<0.00067	<0.00067	<0.00067	<0.00067	0.000506	0.000806	0.00101	<0.00067	0.000457	<0.00067	<0.00067	<0.00067	0.000611	<0.00067	<0.00067
SB-04 @ 0.2' (40.357263 / -104.699787)	06/30/21	0.2	0.9	<0.00067	<0.00067	<0.00067	<0.00067	0.00942	0.0174	0.0186	0.006	0.0123	0.00273	0.00729	<0.00067	0.0102	<0.00067	0.00829
SB-05 @ 0.2' (40.357259 / -104.699877)	06/30/21	0.2	6.1	<0.00067	<0.00067	<0.00067	<0.00067	0.0035	0.00354	0.00356	0.00141	0.00433	0.00044	0.00363	<0.00067	0.00141	<0.00067	0.00305
SB-06 @ 0.2' (40.357401 / -104.699692)	06/30/21	0.2	1.4	<0.00067	<0.00067	0.000549	<0.00067	0.0138*	0.0195	0.0205	0.0065	0.0172	0.0019	0.0159	<0.00067	0.00919	0.000482	0.0156
SB-07 @ 0.2' (40.357429 / -104.699740)	06/30/21	0.2	1.8	<0.00067	<0.00067	<0.00067	<0.00067	0.00051	0.000839	0.000788	<0.00067	0.000816	<0.00067	0.000888	<0.00067	0.000535	<0.00067	0.0008
SB-08 @ 0.2' (40.357433 / -104.699647)	06/30/21	0.2	2.9	<0.00067	<0.00067	<0.00067	<0.00067	<0.00067	0.000266	0.000273	<0.00067	<0.00067	<0.00067	<0.00067	<0.00067	<0.00067	<0.00067	<0.00067
SB-09 @ 0.2' (40.357362 / -104.699646)	06/30/21	0.2	5.6	<0.0067*	<0.0067	<0.0067	<0.0067	<0.0067	<0.0067	<0.0067	<0.0067	<0.0067	<0.0067	<0.0067	<0.0067	<0.0067	<0.0067*	<0.0067
SB-10 @ 0.2' (40.357364 / -104.699734)	06/30/21	0.2	3.7	<0.00067	<0.00067	0.00212	0.00194	0.04*	0.0558	0.0547	0.0297	0.0482	0.00943	0.028	0.000635	0.0202	0.000869	0.0387

ECMC = Energy & Carbon Management Commission

mg/kg = milligrams per kilogram

ppm-v = parts per million by volume

PID = photoionization detector

Notes: Values presented with a less than symbol (<) did not contain concentrations at or above the laboratory reporting limit or minimum detection levels.

Values presented in **BOLD** contained concentrations exceeding applicable ECMC Table 915-1 Regulatory Limits.

Values presented in **BOLD+ asterisk (*)** contained concentrations exceeding ECMC Table 915-1 Protection of Groundwater Soil Screening Levels

TABLE 4
 METALS ANALYTICAL RESULTS SUMMARY
 HAYES FEDERAL #31-8H5
 SITE ASSESSMENT
 40.357388 / -104.699701
 SE¼ NE¼ SEC.31 T9N R65W 6PM
 WELD COUNTY, COLORADO
 SPILL ID 480186
 REMEDIATION # 19598

Sample Location (Latitude/Longitude)	Date	Approximate Depth (feet)	Arsenic (mg/kg)	Barium (mg/kg)	Cadmium (mg/kg)	Hexavalent Chromium (mg/kg)	Copper (mg/kg)	Lead (mg/kg)	Nickel (mg/kg)	Selenium (mg/kg)	Silver (mg/kg)	Zinc (mg/kg)
ECMC Table 915-1 Residential Screening Levels			0.68***	15,000	71	0.3**	3,100	400	1,500	390	390	23,000
ECMC Table 915-1 Protection of Groundwater Soil Screening Levels			0.29***	82	0.38	0.00067**	46	14	26	0.26	0.8	370
Local Cleanup Levels			1.02***	--	--	0.1 to 1**	--	--	--	--	--	--
SB-05 @ 0-2' (40.357259 / -104.699877)	06/30/21	0-2	0.783***	44.4	0.102	<1.02**(1)	5.09	6.38	3.86	0.162	0.027	23.3
Background-01 @ 2' (40.357452 / -104.700023)	06/30/21	2	0.818***	NA	NA	<1**(1)	NA	NA	NA	NA	NA	NA
ECMC = Energy & Carbon Management Commission			NA = Not Analyzed									
mg/kg = milligrams per kilogram												
Notes: Values presented with a less than symbol (<) did not contain concentrations at or above the laboratory reporting limit or minimum detection levels.												
Values presented in BOLD contained concentrations exceeding applicable ECMC Table 915-1 Regulatory Limits.												
**Achievable practical quantitative limits for Hexavalent Chromium in soils is in the range of 0.1 to 1 mg/kg. (1) Sample required dilution, raising laboratory reporting and detection limits - Sample non-detect.												
***Arsenic is naturally occurring in Colorado. Local Clean-up Level (1.02 mg/kg) based on Background*1.25.												

TABLE 5
GROUNDWATER ANALYTICAL RESULTS SUMMARY
HAYES FEDERAL #31-8H5
SITE ASSESSMENT
40.357388 / -104.699701
SE¼ NE¼ SEC.31 T5N R65W 6PM
WELD COUNTY, COLORADO
SPILL ID 480186
REMEDIATION # 19598

Sample Location (Latitude/Longitude)	Date	Benzene (µg/L)	Toluene (µg/L)	Ethylbenzene (µg/L)	Total Xylenes (µg/L)	Naphthalene (µg/L)	1,2,4- Trimethylbenzene (µg/L)	1,3,5 - Trimethylbenzene (µg/L)
ECMC Table 915-1 Regulatory Limits (µg/L)		5	560	700	1400	140	67	67
SB-01 (40.357296 / -104.699834)	07/06/21	<1.00	<1.00	<1.00	<1.00	<4.00	<1.00	<1.00
SB-06 (40.357401 / -104.699692)	07/06/21	<1.00	<1.00	<1.00	<1.00	<4.00	<1.00	<1.00

ECMC = Energy & Carbon Management Commission
 µg/L - micrograms per liter
 Note: Values presented with a less than symbol (<) indicate concentrations were not observed at or above the laboratory reporting limit.
 Values presented in **bold** typeface exceed their respective ECMC - Regulatory Limits (Table 915-1).





ATTACHMENT A

Photo Log

Hayes Federal #31-8H5
Spill ID 480186
Remediation # 19598

Site Assessment

June 2021



Site Assessment – 06/14/21



Intermittent black staining observed during reclamation activities
Staining exposed during scraping of former battery road base
No petroleum hydrocarbons suspected
Black staining/organic odor observed
PID readings ranged from 3.8 ppm-v to 8.0 ppm-v

Site Assessment – 06/14/21



Intermittent black staining observed during reclamation activities
Staining exposed during scraping of former battery road base
No petroleum hydrocarbons suspected
Black staining/organic odor observed
PID readings ranged from 3.8 ppm-v to 8.0 ppm-v



ATTACHMENT B

Soil Boring Log Diagrams

Boring Log/Well Completion Diagram: SB-01

DEPTH (FT)	LITHOLOGY	SAMPLE			OVM/OVA (PPM)	BLOW COUNT (per 0.5 FT)	DEPTH (FT)	WELL CONSTRUCTION DETAIL	COMMENTS
	DESCRIPTION	GRAPHIC LOG	TYPE	NUMBER					
0	(0-3') sandy CLAY - brown to black, moist to wet, medium stiff, low plasticity, well-graded w/ ~30% fine to course grained sand, organic odor wet @ ~2'	CL	DP	1	70	4.4	N/A		
3	(3-10') gravelly SAND - brown, wet, loose, fine to course grained, well-graded w/ ~20% small gravel					7.3			
5		SW	DP	2	70	1.8	N/A		
10						2.6			
10	BoB @ 10'								
15									
20									
25									
30									

DP - Direct Push
 HC - Hydrocarbon
 BoB - Bottom of Boring
 N/O - no odor
 N/S - no staining
 TOC - top of casing
 bgs - below ground surface

START/COMPLETION DATE: 06/30/21	SAND PACK INTERVAL (FEET): 0.5-10
PROJECT: HAYES FEDERAL #31-8H5	BENTONITE/GROUT INTERVAL (FEET): 0-0.5
LOGGED BY: K. PETERSON	WELL SCREEN INTERVAL (FEET): 1-10
DRILLING COMPANY/EQUIPMENT: EAGLE/GEOPROBE	WELL DIAMETER (INCHES): 1
BORING DEPTH (FEET): 10	WELL DEPTH (FEET): 10
PID INSTRUMENT: MiniRAE 3000 - PID #7	
TIME STARTED/COMPLETED: 0931/0945	
SAMPLE COLLECTION DEPTH (FEET)/TIME: 0-2'/0935	



EAGLE
 ENVIRONMENTAL
 CONSULTING, LLC
 8000 W 44th Ave, Wheat Ridge, CO 80033
 Ph: 303-433-0479 F: 303-325-5449

Boring Log/Well Completion Diagram: SB-02

DEPTH (FT)	LITHOLOGY	SAMPLE				OVM/OVA (PPM)	BLOW COUNT (per 0.5 FT)	DEPTH (FT)	WELL CONSTRUCTION DETAIL	COMMENTS
	DESCRIPTION	GRAPHIC LOG	TYPE	NUMBER	RECOVERY %					
0	(0-4.5') sandy CLAY - black, moist to wet, medium stiff, low plasticity, well-graded w/ ~30% fine to course grained sand, organic odor wet @ ~2'	CL	DP	1	80	2.9	N/A			
	(4.5-5') gravelly SAND - brown, wet, loose, fine to course grained, well-graded w/ ~20% small gravel					4.5				
5	BoB @ 5'	SW								
10										
15										
20										
25										
30										

DP - Direct Push
 HC - Hydrocarbon
 BoB - Bottom of Boring
 N/O - no odor
 N/S - no staining
 TOC - top of casing
 bgs - below ground surface

START/COMPLETION DATE: 06/30/21	SAND PACK INTERVAL (FEET): 2-5
PROJECT: HAYES FEDERAL #31-8H5	BENTONITE/GROUT INTERVAL (FEET): 0-2
LOGGED BY: K. PETERSON	WELL SCREEN INTERVAL (FEET): NA
DRILLING COMPANY/EQUIPMENT: EAGLE/GEOPROBE	WELL DIAMETER (INCHES): NA
BORING DEPTH (FEET): 5	WELL DEPTH (FEET): NA
PID INSTRUMENT: MiniRAE 3000 - PID #7	
TIME STARTED/COMPLETED: 0946/0950	
SAMPLE COLLECTION DEPTH (FEET)/TIME: 0-2'/0948	



Boring Log/Well Completion Diagram: SB-03

DEPTH (FT)	LITHOLOGY	SAMPLE				OVM/OVA (PPM)	BLOW COUNT (per 0.5 FT)	DEPTH (FT)	WELL CONSTRUCTION DETAIL	COMMENTS
	DESCRIPTION	GRAPHIC LOG	TYPE	NUMBER	RECOVERY %					
0	(0-2.5') sandy CLAY - black, moist to wet, medium stiff, low plasticity, well-graded w/ ~30% fine to course grained sand, organic odor wet @ ~2'	CL	DP	1	80	2.0	N/A			
5	(2.5-5') gravelly SAND - brown, wet, loose, fine to course grained, well-graded w/ ~20% small gravel	SW				5.4				
5	BoB @ 5'									
10										
15										
20										
25										
30										

DP - Direct Push
 HC - Hydrocarbon
 BoB - Bottom of Boring
 N/O - no odor
 N/S - no staining
 TOC - top of casing
 bgs - below ground surface

START/COMPLETION DATE: 06/30/21	SAND PACK INTERVAL (FEET): 2-5
PROJECT: HAYES FEDERAL #31-8H5	BENTONITE/GROUT INTERVAL (FEET): 0-2
LOGGED BY: K. PETERSON	WELL SCREEN INTERVAL (FEET): NA
DRILLING COMPANY/EQUIPMENT: EAGLE/GEOPROBE	WELL DIAMETER (INCHES): NA
BORING DEPTH (FEET): 5	WELL DEPTH (FEET): NA
PID INSTRUMENT: MiniRAE 3000 - PID #7	
TIME STARTED/COMPLETED: 0951/0957	
SAMPLE COLLECTION DEPTH (FEET)/TIME: 0-2'/0955	



Boring Log/Well Completion Diagram: SB-04

DEPTH (FT)	LITHOLOGY	SAMPLE				OVM/OVA (PPM)	BLOW COUNT (per 0.5 FT)	DEPTH (FT)	WELL CONSTRUCTION DETAIL	COMMENTS
	DESCRIPTION	GRAPHIC LOG	TYPE	NUMBER	RECOVERY %					
0	(0-3') sandy CLAY - black, moist to wet, medium stiff, low plasticity, well-graded w/ ~30% fine to course grained sand, organic odor wet @ ~2'	CL	DP	1	70	0.9	N/A	0		
5	(3-5') gravelly SAND - brown, wet, loose, fine to course grained, well-graded w/ ~20% small gravel	SW				1.1				
5	BoB @ 5'									
10										
15										
20										
25										
30										

DP - Direct Push
 HC - Hydrocarbon
 BoB - Bottom of Boring
 N/O - no odor
 N/S - no staining
 TOC - top of casing
 bgs - below ground surface

START/COMPLETION DATE: 06/30/21	SAND PACK INTERVAL (FEET): 2-5
PROJECT: HAYES FEDERAL #31-8H5	BENTONITE/GROUT INTERVAL (FEET): 0-2
LOGGED BY: K. PETERSON	WELL SCREEN INTERVAL (FEET): NA
DRILLING COMPANY/EQUIPMENT: EAGLE/GEOPROBE	WELL DIAMETER (INCHES): NA
BORING DEPTH (FEET): 5	WELL DEPTH (FEET): NA
PID INSTRUMENT: MiniRAE 3000 - PID #7	
TIME STARTED/COMPLETED: 0958/1004	
SAMPLE COLLECTION DEPTH (FEET)/TIME: 0-2'/1002	



EAGLE
 ENVIRONMENTAL
 CONSULTING, LLC
 8000 W 44th Ave, Wheat Ridge, CO 80033
 Ph: 303-433-0479 F: 303-325-5449

Boring Log/Well Completion Diagram: SB-05

DEPTH (FT)	LITHOLOGY	SAMPLE				OVM/OVA (PPM)	BLOW COUNT (per 0.5 FT)	DEPTH (FT)	WELL CONSTRUCTION DETAIL	COMMENTS
	DESCRIPTION	GRAPHIC LOG	TYPE	NUMBER	RECOVERY %					
0	(0-2.5') sandy CLAY - black, moist to wet, medium stiff, low plasticity, well-graded w/ ~30% fine to course grained sand, organic odor wet @ ~2'	CL	DP	1	80	6.1	N/A			
5	(2.5-5') gravelly SAND - brown, wet, loose, fine to course grained, well-graded w/ ~20% small gravel	SW				6.4				
5	BoB @ 5'									
10										
15										
20										
25										
30										

DP - Direct Push
 HC - Hydrocarbon
 BoB - Bottom of Boring
 N/O - no odor
 N/S - no staining
 TOC - top of casing
 bgs - below ground surface

START/COMPLETION DATE: 06/30/21	SAND PACK INTERVAL (FEET): 2-5
PROJECT: HAYES FEDERAL #31-8H5	BENTONITE/GROUT INTERVAL (FEET): 0-2
LOGGED BY: K. PETERSON	WELL SCREEN INTERVAL (FEET): NA
DRILLING COMPANY/EQUIPMENT: EAGLE/GEOPROBE	WELL DIAMETER (INCHES): NA
BORING DEPTH (FEET): 5	WELL DEPTH (FEET): NA
PID INSTRUMENT: MiniRAE 3000 - PID #7	
TIME STARTED/COMPLETED: 0925/0930	
SAMPLE COLLECTION DEPTH (FEET)/TIME: 0-2'/0928	



EAGLE
 ENVIRONMENTAL
 CONSULTING, LLC

8000 W 44th Ave, Wheat Ridge, CO 80033
 Ph: 303-433-0479 F: 303-325-5449

Boring Log/Well Completion Diagram: SB-06

DEPTH (FT)	LITHOLOGY	SAMPLE				OVM/OVA (PPM)	BLOW COUNT (per 0.5 FT)	DEPTH (FT)	WELL CONSTRUCTION DETAIL	COMMENTS
	DESCRIPTION	GRAPHIC LOG	TYPE	NUMBER	RECOVERY %					
0	(0-2.5') sandy CLAY - black, moist to wet, medium stiff, low plasticity, well-graded w/ ~30% fine to course grained sand, organic odor wet @ ~2'	CL	DP	1	80	1.4	N/A			
2.5	(2.5-10') gravelly SAND - brown, wet, loose, fine to course grained, well-graded w/ ~20% small gravel					0.0				
5		SW	DP	2	70	1.8	N/A			
10	BoB @ 10'					2.1				
15										
20										
25										
30										

DP - Direct Push
 HC - Hydrocarbon
 BoB - Bottom of Boring
 N/O - no odor
 N/S - no staining
 TOC - top of casing
 bgs - below ground surface

START/COMPLETION DATE: 06/30/21	SAND PACK INTERVAL (FEET): 0.5-10
PROJECT: HAYES FEDERAL #31-8H5	BENTONITE/GROUT INTERVAL (FEET): 0-0.5
LOGGED BY: K. PETERSON	WELL SCREEN INTERVAL (FEET): 1-10
DRILLING COMPANY/EQUIPMENT: EAGLE/GEOPROBE	WELL DIAMETER (INCHES): 1
BORING DEPTH (FEET): 10	WELL DEPTH (FEET): 10
PID INSTRUMENT: MiniRAE 3000 - PID #7	
TIME STARTED/COMPLETED: 1011/1020	
SAMPLE COLLECTION DEPTH (FEET)/TIME: 0-2'/1018	



EAGLE
 ENVIRONMENTAL
 CONSULTING, LLC
 8000 W 44th Ave, Wheat Ridge, CO 80033
 Ph: 303-433-0479 F: 303-325-5449

Boring Log/Well Completion Diagram: SB-07

DEPTH (FT)	LITHOLOGY	SAMPLE				OVM/OVA (PPM)	BLOW COUNT (per 0.5 FT)	DEPTH (FT)	WELL CONSTRUCTION DETAIL	COMMENTS
	DESCRIPTION	GRAPHIC LOG	TYPE	NUMBER	RECOVERY %					
0	(0-4.5') sandy CLAY - black, moist to wet, medium stiff, low plasticity, well-graded w/ ~30% fine to coarse grained sand, organic odor wet @ ~2'	CL	DP	1	70	1.8	N/A	0		
	(4.5-5') gravelly SAND - brown, wet, loose, fine to coarse grained, well-graded w/ ~20% small gravel									
5	BoB @ 5'	SW						5		
10								10		
15								15		
20								20		
25								25		
30								30		

DP - Direct Push
 HC - Hydrocarbon
 BoB - Bottom of Boring
 N/O - no odor
 N/S - no staining
 TOC - top of casing
 bgs - below ground surface

START/COMPLETION DATE: 06/30/21	SAND PACK INTERVAL (FEET): 2-5
PROJECT: HAYES FEDERAL #31-8H5	BENTONITE/GROUT INTERVAL (FEET): 0-2
LOGGED BY: K. PETERSON	WELL SCREEN INTERVAL (FEET): NA
DRILLING COMPANY/EQUIPMENT: EAGLE/GEOPROBE	WELL DIAMETER (INCHES): NA
BORING DEPTH (FEET): 5	WELL DEPTH (FEET): NA
PID INSTRUMENT: MiniRAE 3000 - PID #7	
TIME STARTED/COMPLETED: 1021/1030	
SAMPLE COLLECTION DEPTH (FEET)/TIME: 0-2'/1028	



EAGLE
 ENVIRONMENTAL
 CONSULTING, LLC
 8000 W 44th Ave, Wheat Ridge, CO 80033
 Ph: 303-433-0479 F: 303-325-5449

Boring Log/Well Completion Diagram: SB-08

DEPTH (FT)	LITHOLOGY	SAMPLE				OVM/OVA (PPM)	BLOW COUNT (per 0.5 FT)	DEPTH (FT)	WELL CONSTRUCTION DETAIL	COMMENTS
	DESCRIPTION	GRAPHIC LOG	TYPE	NUMBER	RECOVERY %					
0	(0-3') sandy CLAY - black, moist to wet, medium stiff, low plasticity, well-graded w/ ~30% fine to course grained sand, organic odor wet @ ~2'	CL	DP	1	70	2.9	N/A	0		
3	(3-5') gravelly SAND - brown, wet, loose, fine to course grained, well-graded w/ ~20% small gravel	SW				3.7				
5	BoB @ 5'							5		
10								10		
15								15		
20								20		
25								25		
30								30		

DP - Direct Push
 HC - Hydrocarbon
 BoB - Bottom of Boring
 N/O - no odor
 N/S - no staining
 TOC - top of casing
 bgs - below ground surface

START/COMPLETION DATE: 06/30/21	SAND PACK INTERVAL (FEET): 2-5
PROJECT: HAYES FEDERAL #31-8H5	BENTONITE/GROUT INTERVAL (FEET): 0-2
LOGGED BY: K. PETERSON	WELL SCREEN INTERVAL (FEET): NA
DRILLING COMPANY/EQUIPMENT: EAGLE/GEOPROBE	WELL DIAMETER (INCHES): NA
BORING DEPTH (FEET): 5	WELL DEPTH (FEET): NA
PID INSTRUMENT: MiniRAE 3000 - PID #7	
TIME STARTED/COMPLETED: 1037/1045	
SAMPLE COLLECTION DEPTH (FEET)/TIME: 0-2'/1040	




EAGLE
 ENVIRONMENTAL
 CONSULTING, LLC
 8000 W 44th Ave, Wheat Ridge, CO 80033
 Ph: 303-433-0479 F: 303-325-5449

Boring Log/Well Completion Diagram: SB-09

DEPTH (FT)	LITHOLOGY	SAMPLE				OVM/OVA (PPM)	BLOW COUNT (per 0.5 FT)	DEPTH (FT)	WELL CONSTRUCTION DETAIL	COMMENTS
	DESCRIPTION	GRAPHIC LOG	TYPE	NUMBER	RECOVERY %					
0	(0-5') sandy CLAY - black, moist to wet, medium stiff, low plasticity, well-graded w/ ~30% fine to coarse grained sand, organic odor wet @ ~2'	CL	DP	1	70	5.6	N/A	0		
						4.2				
5	BoB @ 5'									
10										
15										
20										
25										
30										

DP - Direct Push
 HC - Hydrocarbon
 BoB - Bottom of Boring
 N/O - no odor
 N/S - no staining
 TOC - top of casing
 bgs - below ground surface

START/COMPLETION DATE: 06/30/21		SAND PACK INTERVAL (FEET): 2-5	
PROJECT: HAYES FEDERAL #31-8H5		BENTONITE/GROUT INTERVAL (FEET): 0-2	
LOGGED BY: K. PETERSON		WELL SCREEN INTERVAL (FEET): NA	
DRILLING COMPANY/EQUIPMENT: EAGLE/GEOPROBE		WELL DIAMETER (INCHES): NA	
BORING DEPTH (FEET): 5	WELL DEPTH (FEET): NA	 <p>EAGLE ENVIRONMENTAL CONSULTING, LLC</p> <p>8000 W 44th Ave, Wheat Ridge, CO 80033 Ph: 303-433-0479 F: 303-325-5449</p>	
PID INSTRUMENT: MiniRAE 3000 - PID #7			
TIME STARTED/COMPLETED: 1031/1036			
SAMPLE COLLECTION DEPTH (FEET)/TIME: 0-2'/1034			

Boring Log/Well Completion Diagram: SB-10

DEPTH (FT)	LITHOLOGY	SAMPLE				OVM/OVA (PPM)	BLOW COUNT (per 0.5 FT)	DEPTH (FT)	WELL CONSTRUCTION DETAIL	COMMENTS
	DESCRIPTION	GRAPHIC LOG	TYPE	NUMBER	RECOVERY %					
0	(0-3') sandy CLAY - black, moist to wet, medium stiff, low plasticity, well-graded w/ ~30% fine to course grained sand, organic odor wet @ ~2'	CL	DP	1	80	3.7	N/A	5		
5	(3-5') gravelly SAND - brown, wet, loose, fine to course grained, well-graded w/ ~20% small gravel	SW				4.1				
5	BoB @ 5'									
10										
15										
20										
25										
30										

DP - Direct Push
 HC - Hydrocarbon
 BoB - Bottom of Boring
 N/O - no odor
 N/S - no staining
 TOC - top of casing
 bgs - below ground surface

START/COMPLETION DATE: 06/30/21	SAND PACK INTERVAL (FEET): 2-5
PROJECT: HAYES FEDERAL #31-8H5	BENTONITE/GROUT INTERVAL (FEET): 0-2
LOGGED BY: K. PETERSON	WELL SCREEN INTERVAL (FEET): NA
DRILLING COMPANY/EQUIPMENT: EAGLE/GEOPROBE	WELL DIAMETER (INCHES): NA
BORING DEPTH (FEET): 5	WELL DEPTH (FEET): NA
PID INSTRUMENT: MiniRAE 3000 - PID #7	
TIME STARTED/COMPLETED: 1005/1010	
SAMPLE COLLECTION DEPTH (FEET)/TIME: 0-2'/1008	



EAGLE
 ENVIRONMENTAL
 CONSULTING, LLC
 8000 W 44th Ave, Wheat Ridge, CO 80033
 Ph: 303-433-0479 F: 303-325-5449