

**TEP Rocky Mountain LLC
Federal RGU 31-25-198
Location ID: 416819**



Unused equipment



Replace faded and illegible signs as required



**TEP Rocky Mountain LLC
Federal RGU 31-25-198
Location ID: 416819**



Soil staining



Soil staining

TEP Rocky Mountain LLC
Federal RGU 31-25-198
Location ID: 416819



Debris



Debris

TEP Rocky Mountain LLC
Federal RGU 31-25-198
Location ID: 416819



Out of service equipment.



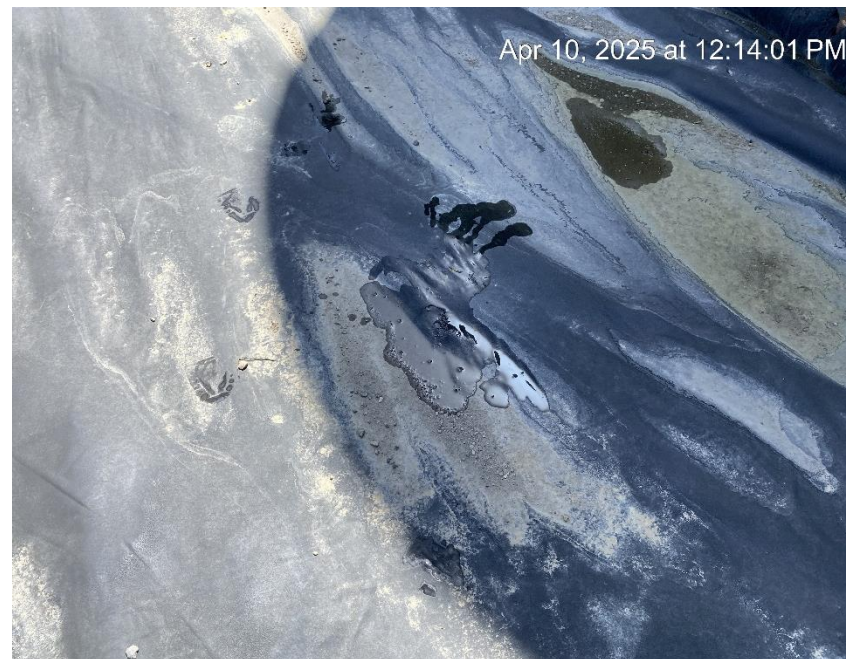
Out of service equipment.



**TEP Rocky Mountain LLC
Federal RGU 31-25-198
Location ID: 416819**

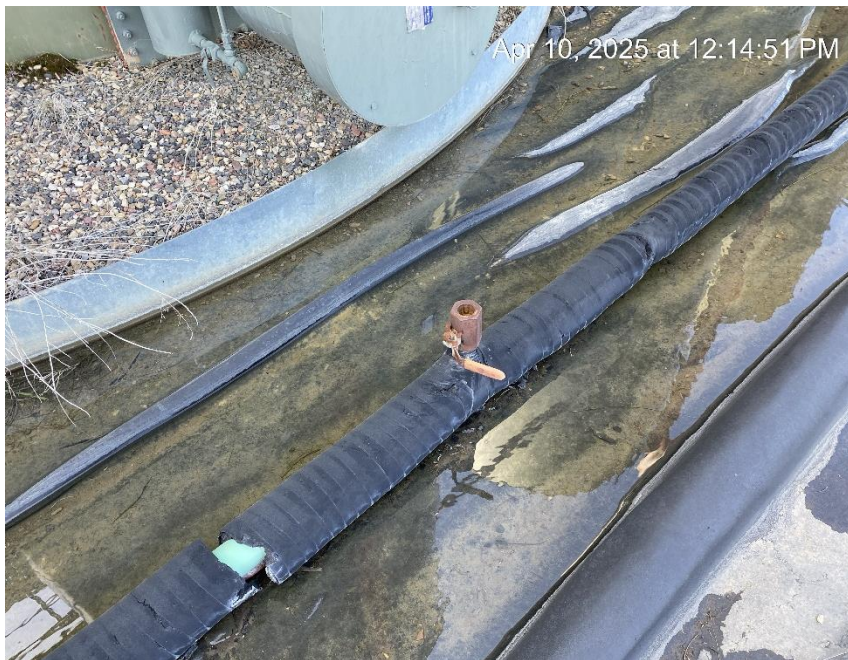


Holes in liner.

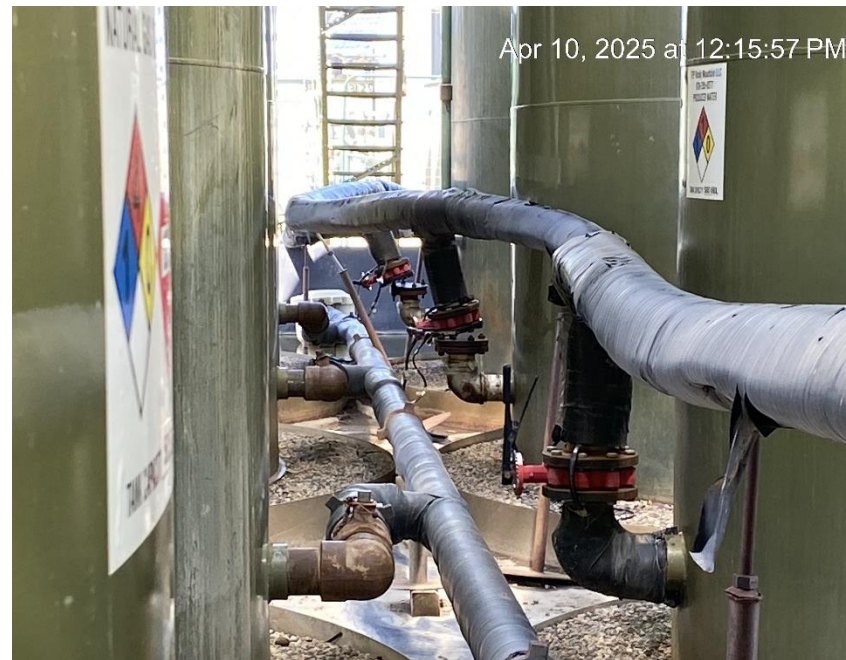


Liner leak.

TEP Rocky Mountain LLC
Federal RGU 31-25-198
Location ID: 416819



Safety hazard

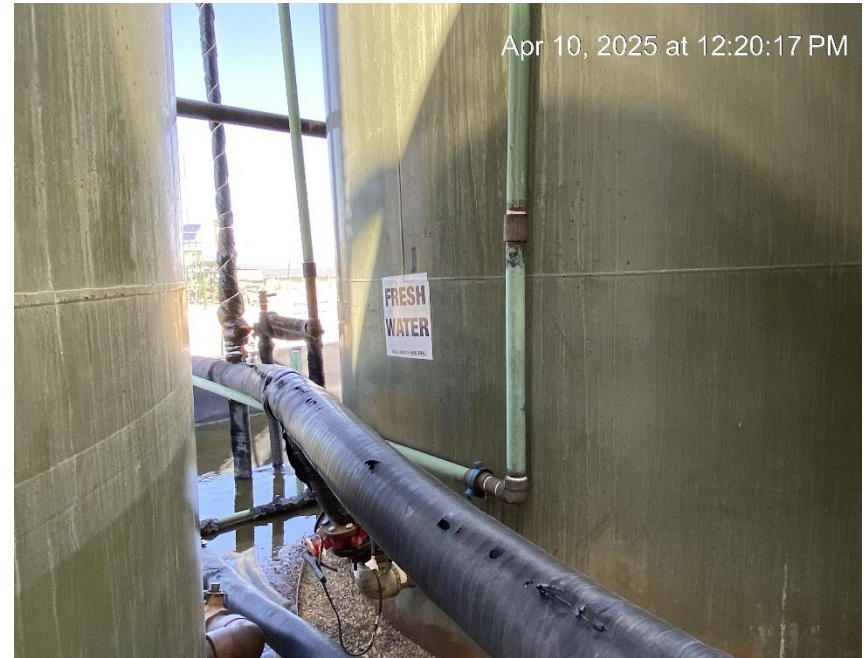


Far 2 tanks on the right disconnected and not in service.

TEP Rocky Mountain LLC
Federal RGU 31-25-198
Location ID: 416819



Missing required label. Tank out of service.



Missing required label. Tank out of service.



**TEP Rocky Mountain LLC
Federal RGU 31-25-198
Location ID: 416819**



Well pad from West entrance



Production facility from West entrance