



Date: 10/29/2024

GENERAL OBSERVATION FORM

Site Area/AOC: UPRC 35-06F Client: Noble

Daily Forecast/Weather: Sunny, 40s Personnel: MW

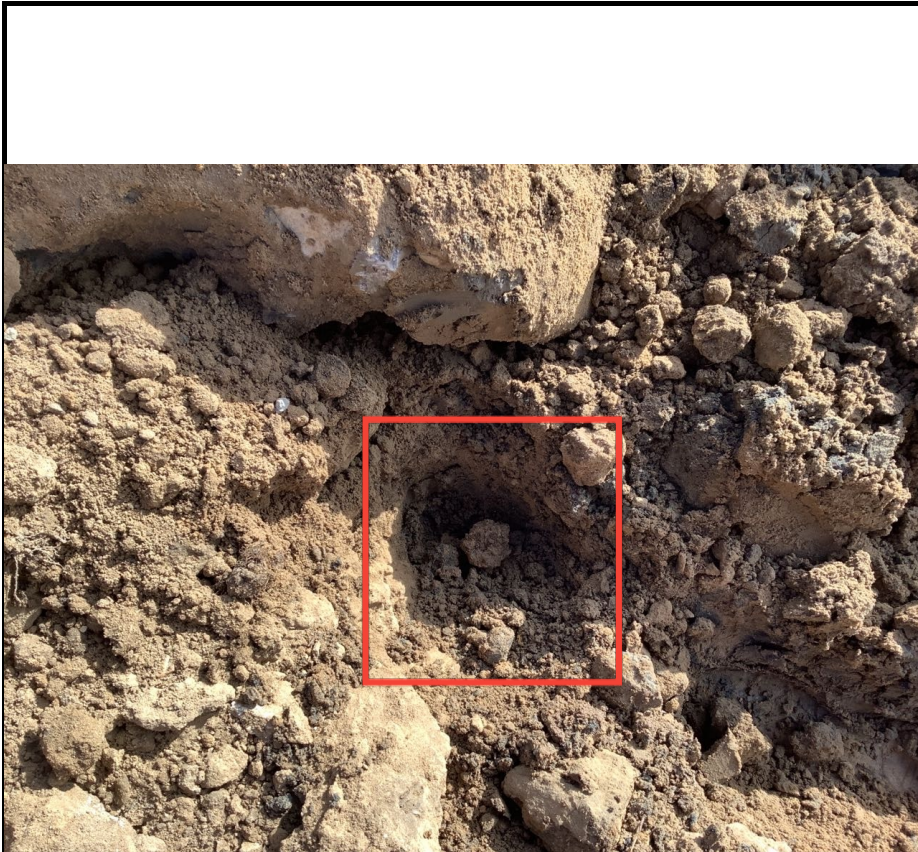
Task/Location Description: Decommissioning soil sampling

Time	Description
07:43	Arrived on site began JSA
07:58	Completed JSA reviewed with crew
07:59	Waited for crew operations
10:49	Began sampling activities
11:55	Completed sampling activities
	Scheduled to resume Flowline removal with ABIP tomorrow 10/30 due to line crossings and need for hydrovac
12:40	Departed site
	10-30-24
07:45	Arrived on site began JSA
08:00	Completed JSA reviewed with crew
08:00	Waited for crew operations
10:00	Began sampling activities
10:30	Completed sampling activities
11:30	Departed site
	FLOWLINE ABIP FROM POINT FL01-03@3' AND FL01-04@3'. NO CURRENT PLAN TO REMOVE.
	SAMPLE FL01R-S SAMPLED WITH FAC DECOMMISSIONING AT SEP01-FL@3' (UPRC 64N66W 35SEW, REM#35324)
	BACKGROUND SAMPLES COLLECTED UNDER SITE: (UPRC 35-05F, REM#: 35326)

Need a photo log?



Need another General Observation Form?



Equipment ID: FL01R-W@3'		Equipment Type:	
Material:	Volume:	Contents:	
Notes/Conditions: FACING E.			

Equipment ID: FL01-02@3'		Equipment Type:	
Material:	Volume:	Contents:	
Notes/Conditions: FACING E.			



Equipment ID: FL01-01 @3'		Equipment Type:		Equipment ID: FL01-03 @3'		Equipment Type:	
Material:	Volume:	Contents:		Material:	Volume:	Contents:	
Notes/Conditions: FACING S.				Notes/Conditions: FACING S.			



Equipment ID: FL01-04 @ 3'		Equipment Type:	
Material:	Volume:	Contents:	
Notes/Conditions: FACING S.			

Equipment ID: FLOWLINES		Equipment Type:	
Material:	Volume:	Contents:	
Notes/Conditions: FACING S.			



FLOWLINE ABANDONMENT FORM

SITE NAME: UPRC 35-05F							DATE: 10/29/2024	REM. PROJECT #: 35326	WEATHER: Sunny, 40s		
SITE DIRECTIONS: CR 33/40, S. 0.47mi, E. 0.22mi, N. into site							CLIENT: Noble				
LEGALS AND LAT/LONG: 40.269740, -104.751510							TASMAN PERSONNEL: MW				
SOIL TYPES: Well Graded Sand - SW							SURFACE GRADIENT: North				
SOIL SAMPLING							FACILITY INFRASTRUCTURE				
Date/Time	Soil Sample ID	PID (ppm)	Visual	Olfactory	Photo?	Grab or Lab Sample?	EQUIPMENT	Quantity	Photo?		
							Above Ground Storage Tank (AST)				
10-29-2024 09:32	FL01R-W@3'	0.2	No Staining	No Odor	Yes	Lab	Buried or Partially Buried Vessel				
10-29-2024 09:24	FL01-01@3'	0.3	No Staining	No Odor	Yes	Lab	Separator				
10-30-2024 10:15	FL01-02@3'	0.1	No Staining	No Odor	Yes	Lab	Emission Control Device (ECD)				
10-30-2024 10:26	BKG01@0-6"	0.0	No Staining	No Odor	Yes	Lab	Dump Line				
10-30-2024 10:27	BKG01@3'	0.0	No Staining	No Odor	Yes	Lab	Wellhead				
10-30-2024 10:28	BKG01@4'	0.1	No Staining	No Odor	Yes	Lab	Flowline	1	✓		
							Other:				
							Soil Loads Removed				
							IMPACTED SOIL IDENTIFIED?				
							ESTIMATED VOLUME OF IMPACTS:				
							Date	Number	CY		
							Total Removed				
							0 0				
							Disposal Facility:				
							Groundwater Recovery				
							DATE GW ENCOUNTERED:		DEPTH:		
							GROUNDWATER IN CONTACT WITH IMPACTED SOIL?				
							LNAPL OR SHEEN OBSERVED ON GW?				
GROUNDWATER SAMPLING							Date	BBLs			
Date/Time	Groundwater Sample ID	Depth Collected	Turbid?	Sheen?	Odor?	Photo?					
							Total Removed				
							0				
							Disposal Facility:				



Date: 10/29/2024

GENERAL OBSERVATION FORM

Site Area/AOC: UPRC 35-05F Client: Noble

Daily Forecast/Weather: Sunny, 40s Personnel: MW

Task/Location Description: Decommissioning soil sampling

Time	Description
07:43	Arrived on site began JSA
07:58	Completed JSA reviewed with crew
07:59	Waited for crew operations
09:20	Began sampling activities
12:02	Completed sampling activities
	Scheduled to resume Flowline removal with ABIP tomorrow 10/30 due to line crossings and need for hydrovac
12:40	Departed site
	HYDROVAC NEEDED FOR CROSSED LINES, WILL COMPLETE REMOVAL AND POTENTIAL ABIP 10/30
	10/30/24
07:45	Arrived on site began JSA
08:00	Completed JSA reviewed with crew
08:00	Waited for crew operations
10:00	Hydrovac completed work, began sampling
10:30	Completed sampling
11:30	Departed site
	FLOWLINE WAS ABIP FROM POINT FL01-02@3' TO FL01-01@3'. NO CURRENT PLAN TO REMOVE
	BKG01 DESCRIPTION:
	0-3': Brown, sand, fine grain, well sorted, dry, no odor, no staining
	3-4': Brown, sand fine grain, well sorted, moist, no odor, no staining
	SAMPLE FL01R-S SAMPLED WITH FAC DECOMMISSIONING AT SEP01-FL@3' (UPRC 64N66W 35SEW, REM#35324)
	BACKGROUND SAMPLES ALSO USED FOR: (UPRC 64N66W 35SEW, REM#35324) & (UPRC 35-06F, REM#: 35328)

Need a photo log?



Need another General Observation Form?



Equipment ID: FL01R-W@3'		Equipment Type:		Equipment ID: FL01-01@3'		Equipment Type:	
Material:	Volume:	Contents:		Material:	Volume:	Contents:	
Notes/Conditions: FACING S.				Notes/Conditions: FACING S.			



Equipment ID: FL01-02 @ 3'		Equipment Type:		Equipment ID: BKG01 @ 0-6", 3', 4'		Equipment Type:	
Material:	Volume:	Contents:		Material:	Volume:	Contents:	
Notes/Conditions: FACING S.				Notes/Conditions: FACING N.			



Equipment ID: FLOWLINES		Equipment Type:	
Material:	Volume:	Contents:	
Notes/Conditions: FACING S.			

Equipment ID:		Equipment Type:	
Material:	Volume:	Contents:	
Notes/Conditions:			



Date: 10/28/2024

GENERAL OBSERVATION FORM

Site Area/AOC: UPRC-64N66W 35SEW Tank Battery Client: Noble

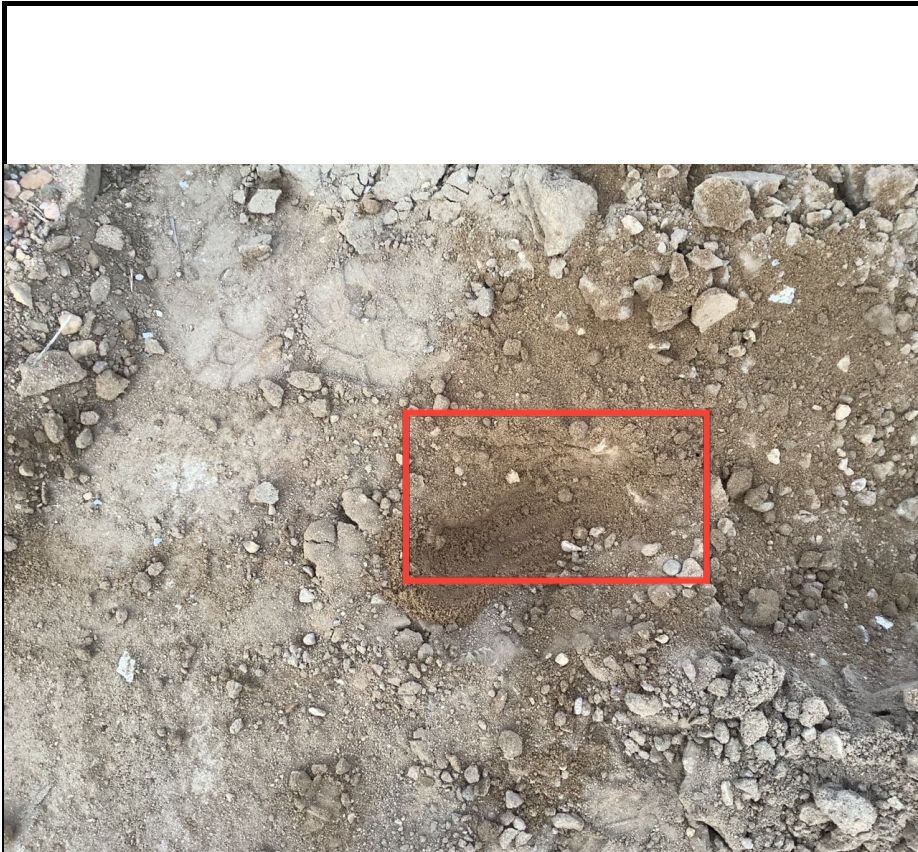
Daily Forecast/Weather: Sunny, 40s Personnel: MW, CK

Task/Location Description: DECOMMISSIONING SOIL SAMPLING

Time	Description
07:50	Arrived on site began JSA
08:23	Completed JSA reviewed with crew
08:30	Began sampling activities
11:35	Completed sampling activities
12:30	Departed site
	BACKGROUND SAMPLES COLLECTED ON TUESDAY 10/29 WITH FLOWLINE DECOMMISSIONING
	FLOWLINE NAME/ REM #: UPRC 35-05F REM#: 35326
	SEP01-FL SAME AS POINT FL01R-S FOR FLOWLINES UPRC 35-05F AND UPRC 35-06F

Need a photo log?

Need another General Observation Form?



Equipment ID: FLARE01@0-6"		Equipment Type:	
Material:	Volume:	Contents:	
Notes/Conditions: FACING W.			

Equipment ID: MH01@0-6"		Equipment Type:	
Material:	Volume:	Contents:	
Notes/Conditions: FACING E.			

					
Material:	Volume:	Contents:	Material:	Volume:	Contents:
Notes/Conditions: AST01 @0-6"			Notes/Conditions: AST02 @0-6"		



Equipment ID: PWV01-N@3'		Equipment Type:	
Material:	Volume:	Contents:	
Notes/Conditions: FACING N.			

Equipment ID: PWV01-E@3'		Equipment Type:	
Material:	Volume:	Contents:	
Notes/Conditions: FACING E.			



Equipment ID: PWV01-S@3'		Equipment Type:	
Material:	Volume:	Contents:	
Notes/Conditions: FACING S.			

Equipment ID: PWV01-W@3'		Equipment Type:	
Material:	Volume:	Contents:	
Notes/Conditions: FACING W.			



Equipment ID: PWV01-B@4'		Equipment Type:		Equipment ID: GS01@0-6"		Equipment Type:	
Material:	Volume:	Contents:		Material:	Volume:	Contents:	
Notes/Conditions: FACING N.				Notes/Conditions: FACING W.			

					
Material:	Volume:	Contents:	Material:	Volume:	Contents:
Notes/Conditions: FACING W.			Notes/Conditions: FACING E.		



Equipment ID: DUMPLINES		Equipment Type:	
Material:	Volume:	Contents:	
Notes/Conditions: FACING W.			

Equipment ID:		Equipment Type:	
Material:	Volume:	Contents:	
Notes/Conditions:			

TABLE 1
FIELD DATA SUMMARY TABLE
NOBLE ENERGY, INC. - 100322
UPRC 35-06F, WELD COUNTY, COLORADO
REM # 35328

Sample ID	Sample Date	Depth (ft. bgs)	GPS Data Latitude/Longitude		PDOP Value	VOC Concentration (ppm)
FL01R-W@3'	10/29/24	3	40.270107	-104.747396	0.9	0.5
FL01-01@3'	10/29/24	3	40.269564	-104.751093	1.0	0.1
FL01-02@3'	10/29/24	3	40.268918	-104.748370	1.0	0.1
FL01-03@3'	10/30/24	3	40.269766	-104.747593	0.9	0.0
FL01-04@3'	10/30/24	3	40.268825	-104.748077	0.9	0.2
SEP01-FL@3' ⁽³⁾	10/28/24	3	40.268618	-104.748175	0.9	0.6
BKG01@0-6" ⁽⁴⁾	10/30/24	0-0.5	40.269124	-104.748350	0.9	0.0
BKG01@3' ⁽⁴⁾	10/30/24	3	40.269124	-104.748350	0.9	0.0
BKG01@4' ⁽⁴⁾	10/30/24	4	40.269124	-104.748350	0.9	0.1

Notes:

1. Global Positioning System (GPS) data is provided in decimal degrees using North American Datum (NAD) 83 UTM Zone 13 North.
2. Volatile organic compound (VOC) concentrations are measured in the field using a photoionization detector (PID).
3. Sample was collected at associated site UPRC 64N66W 35SENW (REM# 35324).
4. Background samples were collected at associated site UPRC 35-05F (REM# 35326).

PDOP = Position Dilution of Precision

ppm = Parts per million

ft. = Feet

bgs = Below ground surface

TABLE 2
SUMMARY OF VOLATILE ORGANIC SOIL CHEMISTRY DATA
NOBLE ENERGY, INC. - 100322
UPRC 35-06F, WELD COUNTY, COLORADO
REM # 35328

Sample ID	Sample Date	Depth (ft. bgs)	Benzene (mg/kg)	Toluene (mg/kg)	Ethyl-Benzene (mg/kg)	Xylenes (mg/kg)	1,2,4-Trimethyl-Benzene (mg/kg)	1,3,5-Trimethyl-Benzene (mg/kg)	Naphthalene (mg/kg)	TPH (mg/kg)	TPH GRO (mg/kg)	TPH DRO (mg/kg)	TPH ORO (mg/kg)
ECMC Table 915-1 Limits (Residential SSL)			1.2	490	5.8	58	30	27	2	500	500**		
ECMC Table 915-1 Limits (Protection of Groundwater SSL)			0.0026	0.69	0.78	9.9	0.0081	0.0087	0.0038	500	500**		
FL01R-W@3'	10/29/24	3	<0.0020	<0.0050	<0.0050	<0.010	<0.0050	<0.0050	<0.0038	<50	<0.50	<50	<50
FL01-03@3'	10/30/24	3	<0.0020	<0.0050	<0.0050	<0.010	<0.0050	<0.0050	<0.0038	<50	<0.50	<50	<50
FL01-04@3'	10/30/24	3	<0.0020	<0.0050	<0.0050	<0.010	<0.0050	<0.0050	<0.0038	<50	<0.50	<50	<50
SEP01-FL@3' ⁽⁴⁾	10/28/24	3	<0.0020	<0.0050	<0.0050	<0.010	<0.0050	<0.0050	<0.0038	<50	<0.50	<50	<50

Notes:

1. **Bold** values exceed the ECMC Table 915-1 limit(s).
2. Pink & blue highlighted soil analytical values indicate an exceedance of the referenced soil screening level (SSL).
3. ** Summation of GRO+DRO+ORO must be less than 500 mg/kg.
4. Sample was collected at associated site UPRC 64N66W 35SEW (REM# 35324).

ECMC = Energy & Carbon Management Commission

(<) = Analytical result is less than the indicated laboratory reporting limit.

TPH-GRO = Total petroleum hydrocarbons - gasoline range organics

TPH-DRO = Total petroleum hydrocarbons - diesel range organics

TPH-ORO = Total petroleum hydrocarbons - oil range organics

mg/kg = Milligrams per kilogram

ft. = Feet

bgs = Below ground surface

TABLE 3
SUMMARY OF POLYCYCLIC AROMATIC HYDROCARBON SOIL CHEMISTRY DATA
NOBLE ENERGY, INC. - 100322
UPRC 35-06F, WELD COUNTY, COLORADO
REM # 35328

Sample ID	Sample Date	Depth (ft. bgs)	Acenaphthene (mg/kg)	Anthracene (mg/kg)	Benzo (a) Anthracene (mg/kg)	Benzo (a) Pyrene (mg/kg)	Benzo (b) Fluoranthene (mg/kg)	Benzo (k) Fluoranthene (mg/kg)	Chrysene (mg/kg)	Dibenzo (a,h) Anthracene (mg/kg)	Fluoranthene (mg/kg)	Fluorene (mg/kg)	Indeno (1,2,3-cd) Pyrene (mg/kg)	Pyrene (mg/kg)	1-Methyl - Naphthalene (mg/kg)	2-Methyl- Naphthalene (mg/kg)
ECMC Table 915-1 Limits (Residential SSL)			360	1,800	1.1	0.11	1.1	11	110	0.11	240	240	1.1	180	18	24
ECMC Table 915-1 Limits (Protection of Groundwater SSL)			0.55	5.8	0.011	0.24	0.3	2.9	9	0.096	8.9	0.54	0.98	1.3	0.006	0.019
FL01R-W@3'	10/29/24	3	<0.00500	<0.00500	<0.00500	<0.00500	<0.00500	<0.00500	<0.00500	<0.00500	<0.00500	<0.00500	<0.00500	<0.00500	<0.00500	<0.00500
FL01-03@3'	10/30/24	3	<0.00500	<0.00500	<0.00500	<0.00500	<0.00500	<0.00500	<0.00500	<0.00500	<0.00500	<0.00500	<0.00500	<0.00500	<0.00500	<0.00500
FL01-04@3'	10/30/24	3	<0.00500	<0.00500	<0.00500	<0.00500	<0.00500	<0.00500	<0.00500	<0.00500	<0.00500	<0.00500	<0.00500	<0.00500	<0.00500	<0.00500
SEP01-FL@3' ⁽³⁾	10/28/24	3	<0.00500	<0.00500	<0.00500	<0.00500	<0.00500	<0.00500	<0.00500	<0.00500	<0.00500	<0.00500	<0.00500	<0.00500	<0.00500	<0.00500

Notes:

1. **Bold** values exceed the ECMC Table 915-1 limit(s).
2. Pink & blue highlighted soil analytical values indicate an exceedance of the referenced soil screening level (SSL).
3. Sample was collected at associated site UPRC 64N66W 35SENW (REM# 35324).

ECMC = Colorado Energy & Carbon Management Commission

(<) = Analytical result is less than the indicated laboratory reporting limit.

ft. = Feet

bgs = Below ground surface

mg/kg = Milligrams per kilogram

TABLE 4
SUMMARY OF SOIL SUITABILITY FOR RECLAMATION
NOBLE ENERGY, INC. - 100322
UPRC 35-06F, WELD COUNTY, COLORADO
REM # 35328

Sample ID	Sample Date	Depth (ft. bgs)	pH (Standard Units)	EC (mmhos/cm)	SAR (Standard Units)	Boron (mg/L)
ECMC Table 915-1 Soil Suitability Limits			6 - 8.3	<4	<6	2
FL01R-W@3'	10/29/24	3	8.13	0.476	2.41	<2.00
FL01-03@3'	10/30/24	3	7.08	0.346	0.618	<2.00
FL01-04@3'	10/30/24	3	8.73	0.530	2.14	<2.00
SEP01-FL@3' ⁽⁴⁾	10/28/24	3	7.21	0.0898	0.0347	<2.00
BKG01@0-6" ⁽⁵⁾	10/30/24	0-0.5	6.80	1.65	1.31	<2.00
BKG01@3' ⁽⁵⁾	10/30/24	3	8.60	0.721	0.647	<2.00
BKG01@4' ⁽⁵⁾	10/30/24	4	8.17	0.498	0.897	<2.00
Maximum Background Concentration			8.60	-	-	-

Notes:

1. **Bold** faced values exceed the ECMC Table 915-1 limit(s), but are within background concentrations.
2. **Red** faced values exceed the ECMC Table 915-1 limit(s) and native background concentrations.
3. Brown highlighted soil analytical values indicate a regulatory exceedance.
4. Sample was collected at associated site UPRC 64N66W 35SEW (REM# 35324).
5. Background samples were collected at associated site UPRC 35-05F (REM# 35326).

ECMC = Colorado Energy & Carbon Management Commission

EC = Electrical conductivity

SAR = Sodium adsorption ratio

mmhos/cm = millimhos per centimeter

mg/L = milligram per liter

(<) = Analytical result is less than the indicated laboratory reporting limit.

ft. = Feet

bgs = Below ground surface

TABLE 5
SUMMARY OF METALS IN SOIL CHEMISTRY DATA
NOBLE ENERGY, INC. - 100322
UPRC 35-06F, WELD COUNTY, COLORADO
REM # 35328

Sample ID	Sample Date	Depth (ft. bgs)	Arsenic (mg/kg)	Barium (mg/kg)	Cadmium (mg/kg)	Chromium (VI) ^[4] (mg/kg)	Copper (mg/kg)	Lead (mg/kg)	Nickel (mg/kg)	Selenium (mg/kg)	Silver (mg/kg)	Zinc (mg/kg)
ECMC Table 915-1 Limits (Residential SSL)			0.68	15,000	71	0.3	3,100	400	1,500	390	390	23,000
ECMC Table 915-1 Limits (Protection of Groundwater SSL)			0.29	82	0.38	0.00067	46	14	26	0.26	0.8	370
FL01R-W@3'	10/29/24	3	2.19	46.0	<0.200	<0.30	5.41	10.3	3.47	<0.260	0.0555	19.2
FL01-03@3'	10/30/24	3	1.52	48.5	<0.200	<0.30	3.44	5.29	3.12	<0.260	0.0264	15.4
FL01-04@3'	10/30/24	3	1.34	47.4	<0.200	<0.30	3.32	4.94	2.87	<0.260	0.0237	14.8
SEP01-FL@3 ⁽⁶⁾	10/28/24	3	1.46	45.4	<0.200	<0.30	3.15	5.08	3.08	<0.260	0.0233	14.2
BKG01@0-6 ⁽⁷⁾	10/30/24	0-0.5	1.43	28.5	<0.200	<0.30	3.47	6.92	2.04	<0.260	0.0325	14.2
BKG01@3 ⁽⁷⁾	10/30/24	3	1.18	37.8	<0.200	<0.30	2.50	3.78	2.71	<0.260	0.0238	11.2
BKG01@4 ⁽⁷⁾	10/30/24	4	1.10	35.9	<0.200	<0.30	2.60	3.43	2.45	<0.260	<0.0200	11.5
Maximum Background Concentration X 1.25			1.79	-	-	-	-	-	-	-	-	-

Notes:

- Bold** faced values exceed the ECMC Table 915-1 limit(s), but are within 1.25x background concentrations.
- Red** faced values exceed the ECMC Table 915-1 limit(s) and native background concentrations.
- Red & blue highlighted soil analytical values indicate an exceedance of the referenced soil screening level (SSL).
- Compound falls within ECMC Table 915-1 Footnote 9.
- Non-detect background results accounted for in the highest background concentration by using the reporting limit.
- Sample was collected at associated site UPRC 64N66W 35SEW (REM# 35324).
- Background samples were collected at associated site UPRC 35-05F (REM# 35326).

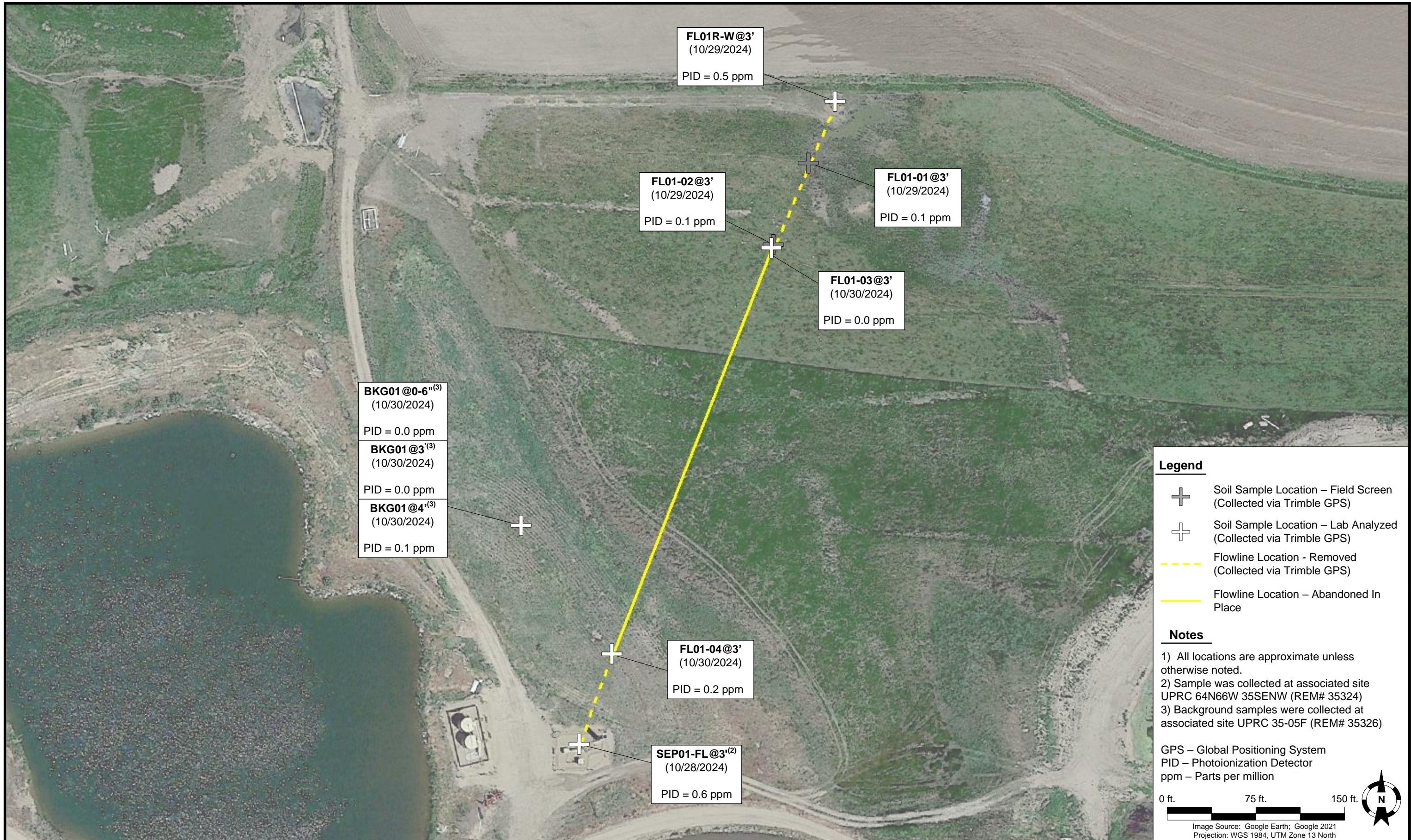
ECMC = Energy & Carbon Management Commission

(<) = Analytical result is less than the indicated laboratory reporting limit.

mg/kg = Milligrams per kilogram

ft. = Feet

bgs = Below ground surface



BKG01 @0-6"⁽³⁾
 (10/30/2024)
 PID = 0.0 ppm

BKG01 @3'⁽³⁾
 (10/30/2024)
 PID = 0.0 ppm

BKG01 @4'⁽³⁾
 (10/30/2024)
 PID = 0.1 ppm

FL01R-W@3'
 (10/29/2024)
 PID = 0.5 ppm

FL01-02@3'
 (10/29/2024)
 PID = 0.1 ppm

FL01-01@3'
 (10/29/2024)
 PID = 0.1 ppm

FL01-03@3'
 (10/30/2024)
 PID = 0.0 ppm

FL01-04@3'
 (10/30/2024)
 PID = 0.2 ppm

SEP01-FL@3'⁽²⁾
 (10/28/2024)
 PID = 0.6 ppm

DATE: February 26, 2025

DESIGNED BY: J. Whritenour

DRAWN BY: R. Yavinsky



Noble Energy, Inc. – 100322 – DJ Basin
UPRC 35-06F Flowline
 SENW, Section 35, Township 4 North, Range 66 West
 Weld County, Colorado

SOIL SAMPLE LOCATION MAP
 (10/28/2024 – 10/30/2024)

FIGURE 1