

WGS84 40.09402, -104.93581 Δ $\pm 43\text{ft}$ $\pm 33\text{ft}$ 4994 ± 11 E87



**ECMC
Environmental
Field Inspection**



Facility 4 @ Ditlev
© 19-Mar-25 10:57:38 AM
ECMC Environmental Inspection

3/19/2025

Metallic/silver sheen observed on water within open trench at northern flowline elbow.



WGS84 40.09391, -104.93582 Alt 4993 N7
+8ft ±10ft ±11

Sheen at northern elbow observed on 3/19/2025 and 4/8/2025

Free product on groundwater at southern elbow observed on 4/8/2025

ECMC Environmental Field Inspection



Facility 4 @ Ditley C1
@ 08-Apr-25 08:57:16 AM
ECMC Environmental Inspection

4/8/2025

WGS84 $\pm 18\text{ft}$ 40.09390, -104.93583 \wedge^{ft} $\pm 15\text{ft}$ 4997 $\triangle^{\circ, \text{T}}$ ± 11 NE18



**ECMC
Environmental
Field Inspection**



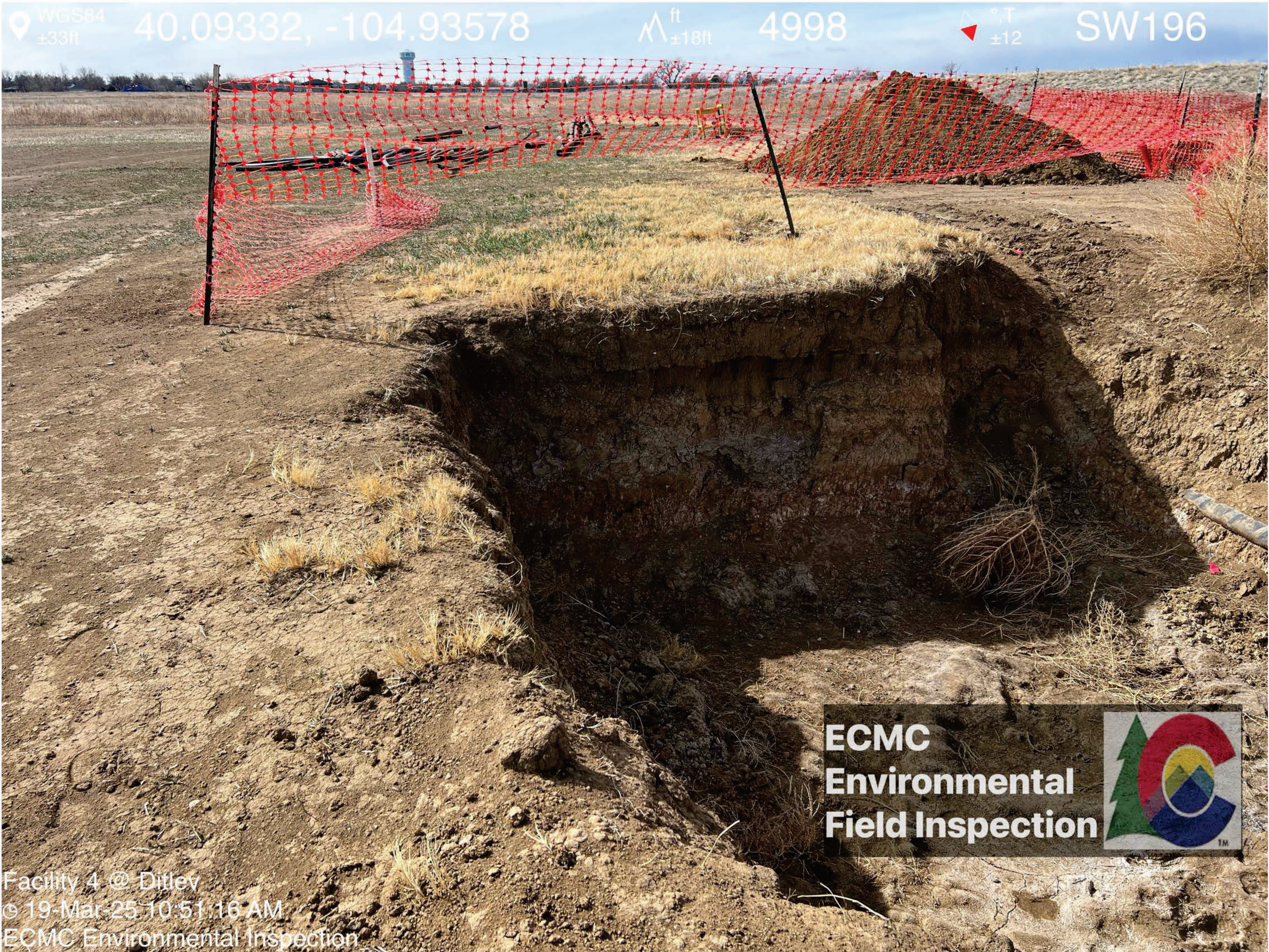
Facility 4 @ Ditlev C1

08-Apr-25 08:57:55 AM

ECMC Environmental Inspection

4/8/2025

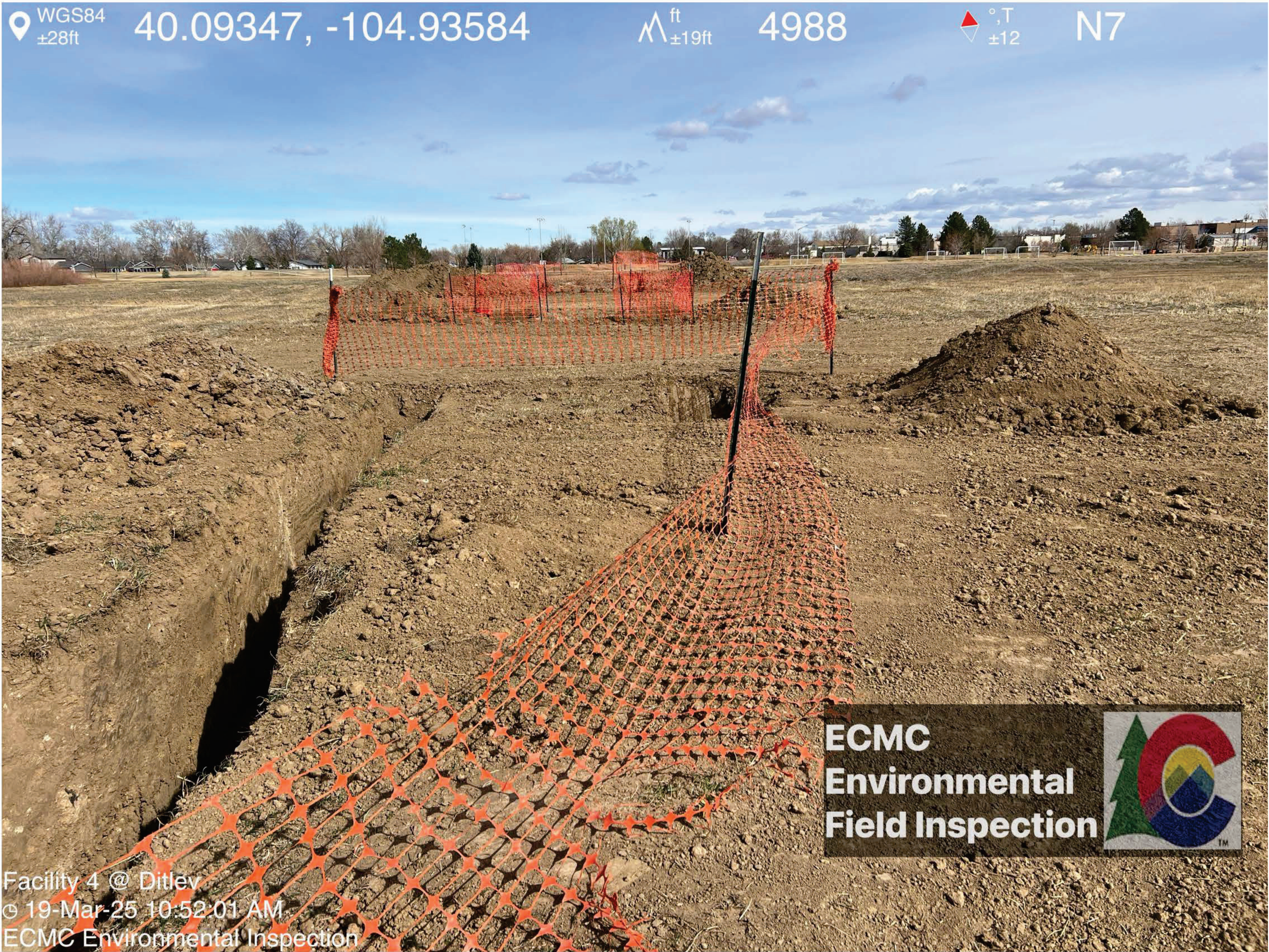
Flowline trenches/excavations with inadequate fencing. Groundwater and free product observed within base of the northernmost trench. Soil stockpiled adjacent to open trenches/excavations without signage/BMPs. Located in close proximity to soccer field within Town of Frederick.



Facility 4 @ Ditlev
© 19-Mar-25 10:51:16 AM
ECMC Environmental Inspection

3/19/2025

Inadequate fencing around to Facility 4 @ Ditlev Spill excavation. Weeds observed within the open excavation. Soil stockpiled on location without signage/BMPs. Unused equipment was observed on location.



WGS84
±28ft 40.09347, -104.93584

ft
±19ft 4988

°T
±12 N7

Facility 4 @ Ditlev
© 19-Mar-25 10:52:01 AM
ECMC Environmental Inspection

ECMC
Environmental
Field Inspection



3/19/2025

Multiple trenches/excavations on location with inadequate fencing. Soil stockpiled adjacent to open trenches/excavations without signage/BMPs. Located in close proximity to soccer field within Town of Frederick.

WGS84 40.09400, -104.93572 Δ ± 11 ft Δ ± 10 ft 4998 \triangleleft \triangle ± 11 $^{\circ}$, T W275



ECMC
Environmental
Field Inspection



Facility 4 @ Ditlev C1
© 08-Apr-25 08:58:46 AM
ECMC Environmental Inspection

4/8/2025

Soil stockpiled adjacent to open trenches/excavations without signage/BMPs.
Located in close proximity to surface water within Town of Frederick.

WGS84 40.09324, -104.93584 Δ $\pm 15\text{ft}$ Δ $\pm 12\text{ft}$ 4998 Δ ± 11 °,T N4



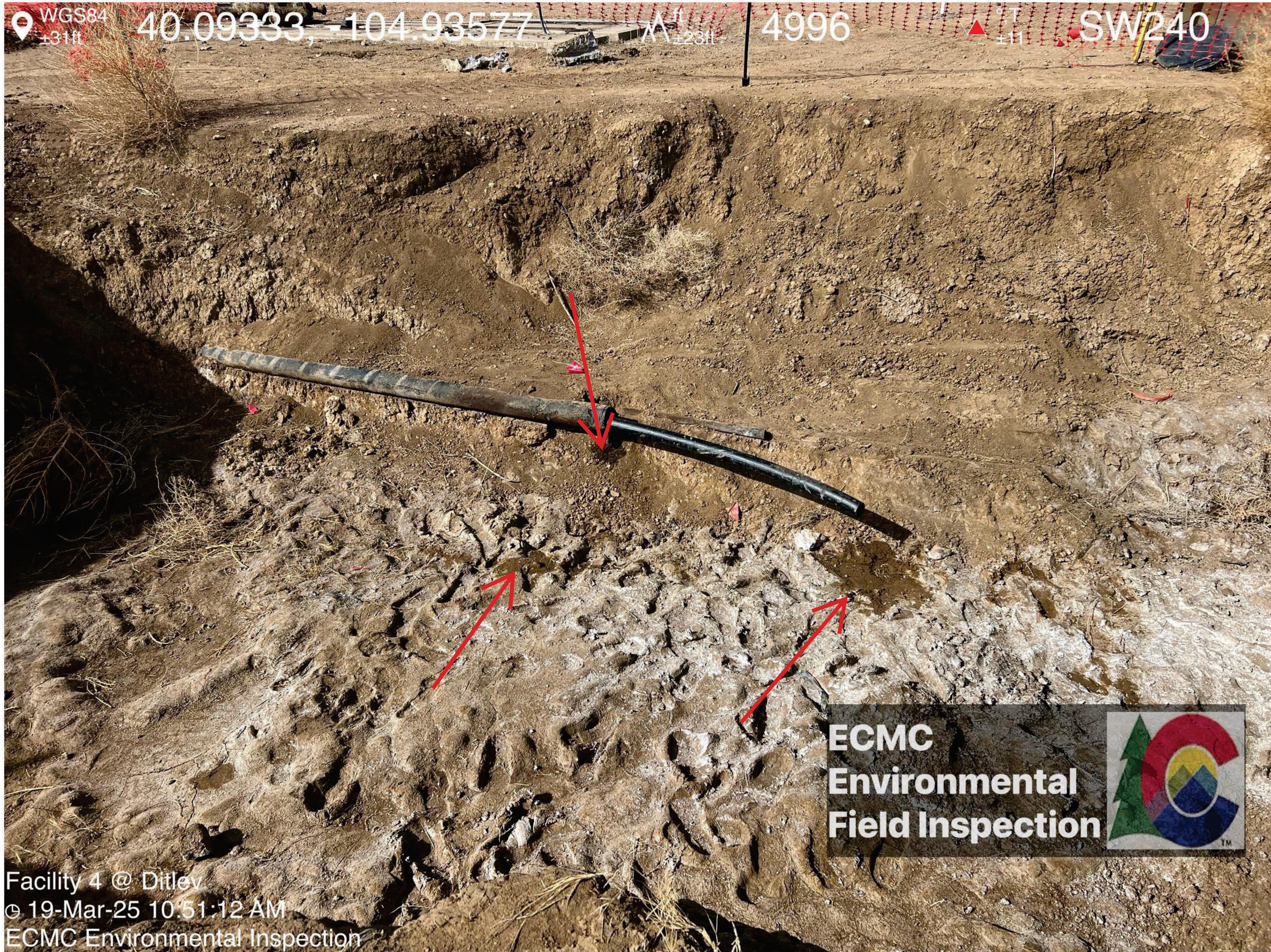
**ECMC
Environmental
Field Inspection**



Facility 4 @ Ditlev C1
© 08-Apr-25 08:53:19 AM
ECMC Environmental Inspection

4/8/2025

Facility 4 @ Ditlev C1 Flowline Spill excavation. Fencing reinstalled since 3/19/2025 inspection. However, fencing remains inadequate for site conditions and does not surround the entire extent of the Facility 4 @ Ditlev Spill excavation. Monitoring wells have been installed. Soil has been stockpiled on location without signage/BMPs.



Facility 4 @ Ditlev
© 19-Mar-25 10:51:12 AM
ECMC Environmental Inspection
3/19/2025

Facility 4 @ Ditlev Spill - Oil stained soil observed at base of the excavation. Flowlines have been cut and remain uncapped/not properly sealed and visible within the open excavation.

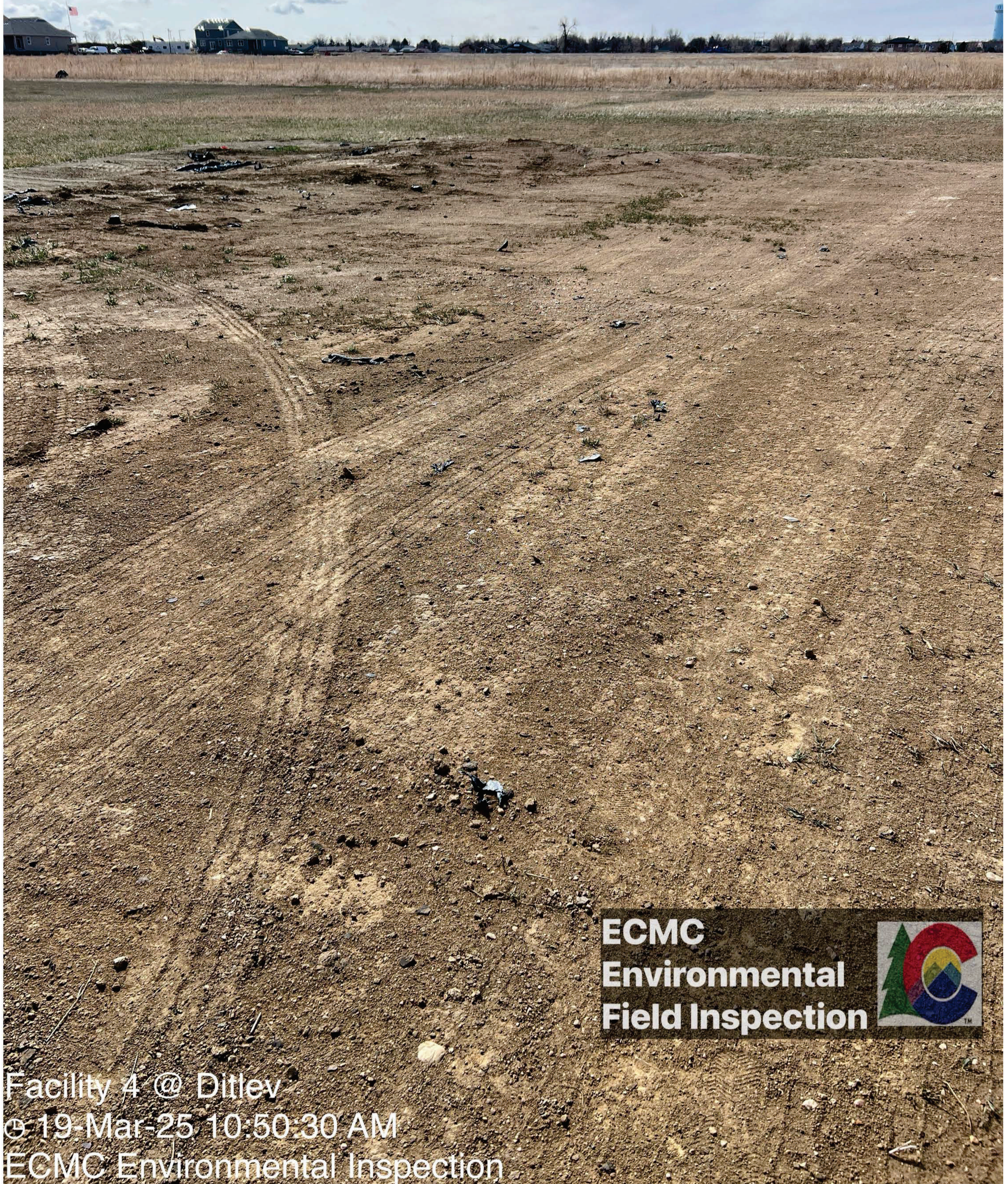
WGS84 $\pm 13\text{ft}$ 40.09330, -104.93576 $\wedge^{\text{ft}}_{\pm 11\text{ft}}$ 4999 $\triangle^{\circ, T}_{\pm 11}$ NW303



Facility 4 @ Ditlev C1
© 08-Apr-25 08:55:03 AM
ECMC Environmental Inspection

4/8/2025
Oil stained soil beneath former flowline in base of Facility 4 @ Ditlev Spill excavation.
Weeds and uncapped flowlines within the open excavation have been removed since 3/19/2025 inspection.

WGS84 $\pm 27\text{ft}$ 40.09329, -104.93565 \wedge^{ft} $\pm 19\text{ft}$ 4996 $\triangle^{\circ, \text{T}}$ ± 11 SE161



**ECMC
Environmental
Field Inspection**



Facility 4 @ Ditlev
@ 19-Mar-25 10:50:30 AM
ECMC Environmental Inspection

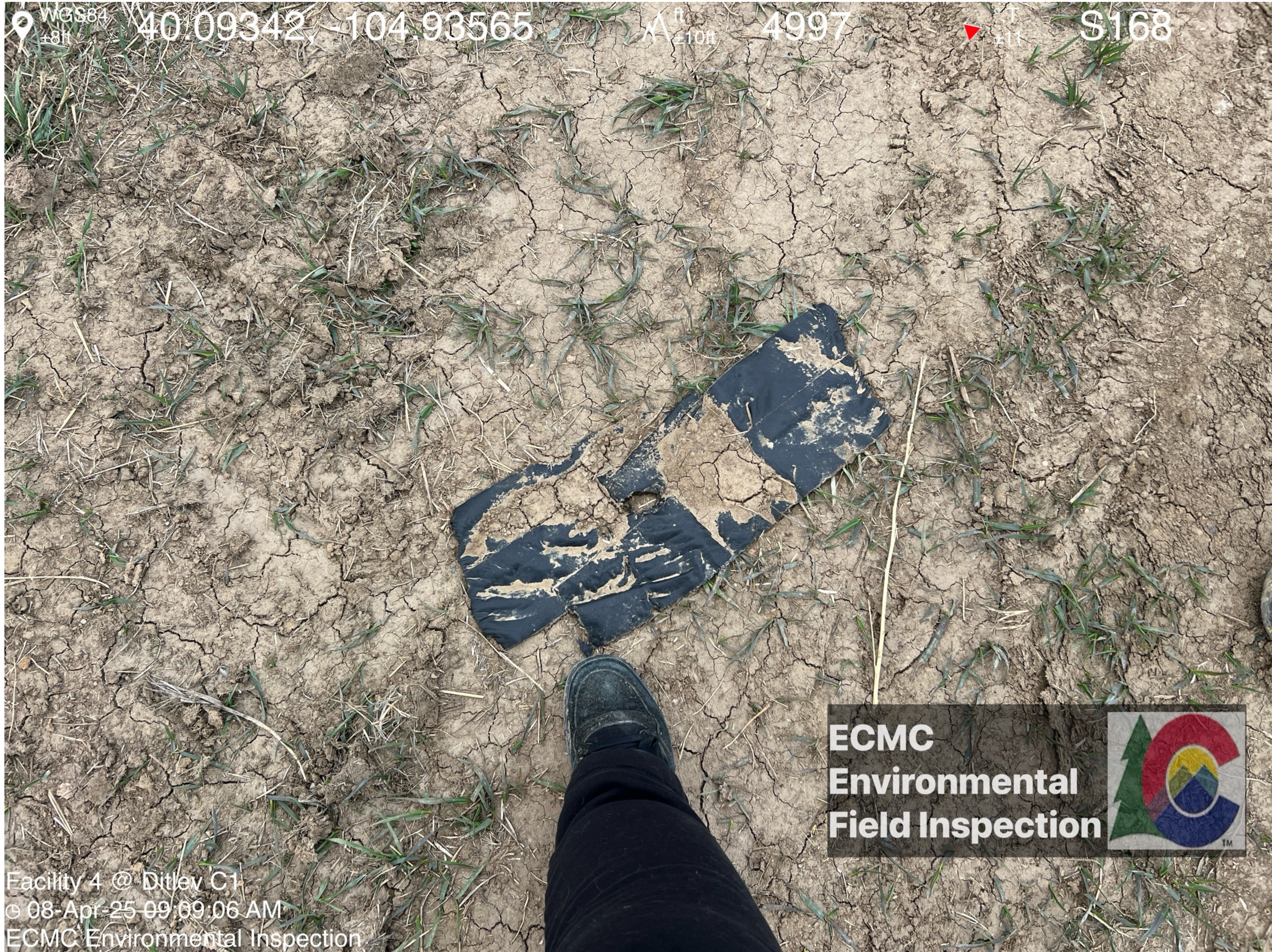
3/19/2025

Former stockpile location. Pieces of stockpile liner embedded in soil throughout location



4/8/2025

Former stockpile location. Trash/Debris - Pieces of former soil stockpile liner embedded in soil throughout location.



4/8/2025

Trash/Debris - Pieces of stockpile liner embedded in soil throughout location



4/8/2025
 Crews on location removing flowlines at time of inspection