



067-07494

Day-V Ranch 35-2 Photo document

4/7/2025



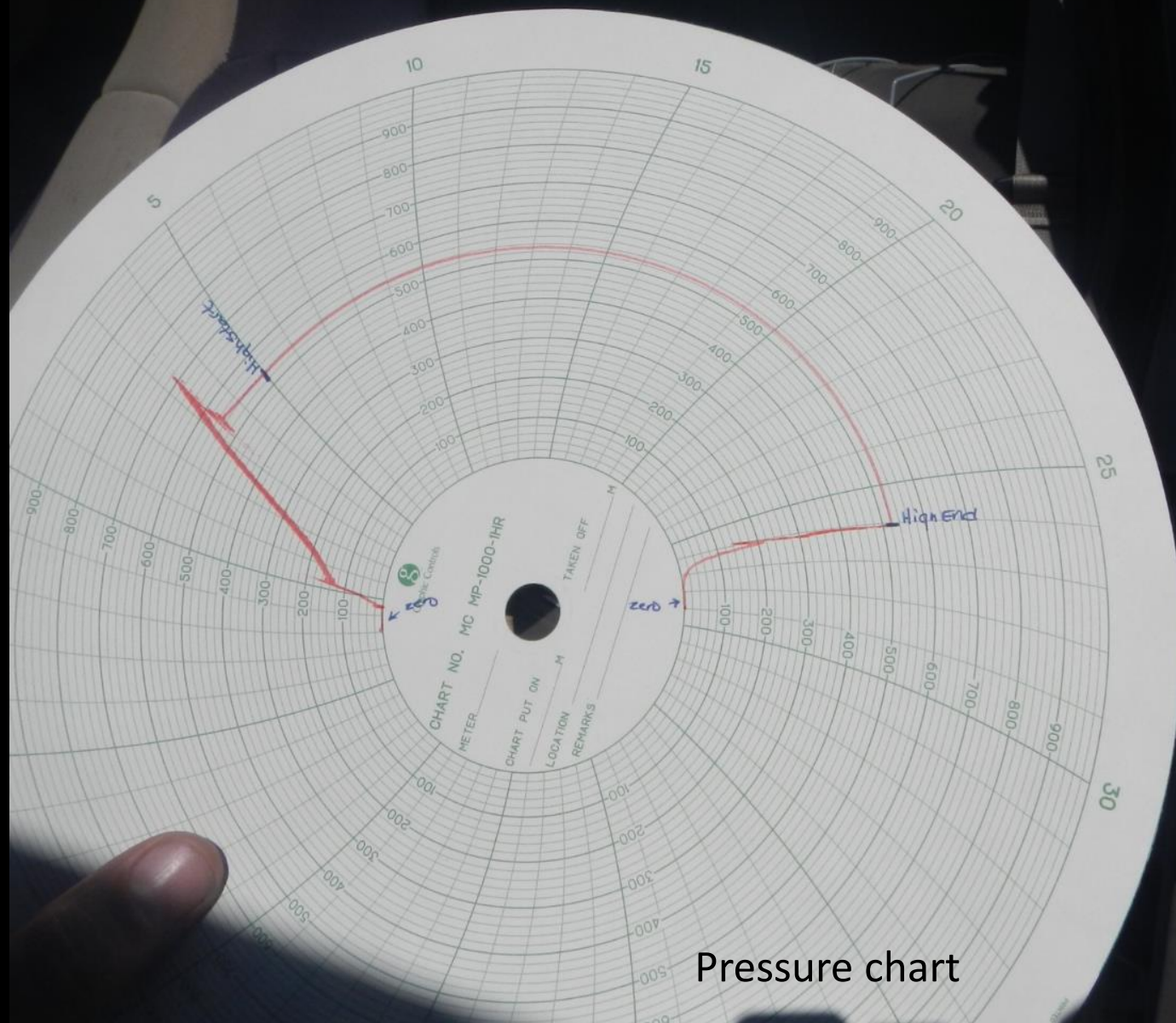
04.07.2025

Well sign, no 24-hour operator or
emergency services phone #



04.07.2025

Noxious weeds



Pressure chart

04.07.2025

FORM
21
Rev
11/20

State of Colorado
Energy & Carbon Management Commission

1120 Lincoln Street, Suite 801, Denver, Colorado 80203
Phone: (303) 894-2100 Fax: (303) 894-2109



Document Number:

Date Received:

MECHANICAL INTEGRITY TEST

1. Duration of the pressure test must be a minimum of 15 minutes.
2. An original pressure chart must accompany this report if this test was not witnessed by an ECMC representative.
3. For production wells, test pressures must be at a minimum of 300 psig.
4. New injection wells must be tested to maximum requested injection pressure.
5. For injection wells, test pressures must be at least 300 psig or average injection pressure, whichever is greater.
6. A minimum 300 psi differential pressure must be maintained between the tubing and tubing/casing annulus pressure.
7. Do not use this form if submitting under provisions of Rule 325 at 11B, or C.
8. Written ECMC notification must be provided 10 days prior to the test via Form 42, Field Operations Notice.
9. Packers or bridge plugs, etc., must be set within 100 feet of the perforated interval to be considered a valid test.

Complete the Attachment

Checklist

ECMC Operator Number:	10563	Contact Name	Jonathan Archuleta	OP ECMC	
Name of Operator:	ENDURING RESOURCES LLC	Phone:	(505) 419-7024	Pressure Chart	X
Address:	6300 S SYRACUSE WAY, SUITE 525			Cement Bond Log	
City:	CENTENNIAL	State:	CO	Tracer Survey	
Zip:	80111	Email:	jarchuleta@enduringresources.co	Temperature Survey	
Well Number:	067-07494	ECMC Facility ID Number:	215889	Inspection Number	700300793
Well Name:	DAY-V-RANCH	Well/Facility Number:	35-2		
Location:	SWSE	Section:	35		
		Township:	35N		
		Range:	9W		
		Meridian:	N		

☒ SHUT-IN PRODUCTION WELL ☐ INJECTION WELL Last MIT Date: 3/13/2018 12:00:00 AM

Test Type:

☒ Test to Maintain SI/TA status ☐ 5-Year UIC ☐ Reset Packer

☐ Verification of Repairs ☐ Annual UIC TEST

☐ Describe Repairs or Other Well Activities: This is a monitoring well and this is the 5 year MIT

Wellbore Data at Time of Test			Casing Test
Injection Producing Zone(s)	Perforated Interval	Open Hole Interval	
FRLDC	1870'-2126'		Use when perforations or open hole is isolated by bridge plug or cement plug, use if cased-hole only with plug back total depth.
Tubing Casing/Annulus Test			Bridge Plug or Cement Plug Depth
Tubing Size:	Tubing Depth:	Top Packer Depth:	Multiple Packers?
2.875	1822'	1822'	

Test Data (Use -1 for a vacuum)				
Test Date	Well Status During Test	Casing Pressure Before Test	Initial Tubing Pressure	Final Tubing Pressure
04-07-2025	Shut In	350	623	90
Casing Pressure Start Test	Casing Pressure - 5 Min.	Casing Pressure - 10 Min.	Casing Pressure Final Test	Pressure Loss or Gain
539	539	536	525	-14
Test Witnessed by State Representative? <input checked="" type="checkbox"/>		ECMC Field Representative Steve Kabowski		

OPERATOR COMMENTS:

Bled down tubing pressure to lower initial dp between casing & tubing

I hereby certify all statements made in this form are, to the best of my knowledge, true, correct, and complete.

Signed: Jonathan Archuleta Print Name: Jonathan Archuleta

Title: Foreman Email: jarchuleta@enduringresources.com Date: 5/17/25

25 minute test. 1 psi loss in 15 min of test

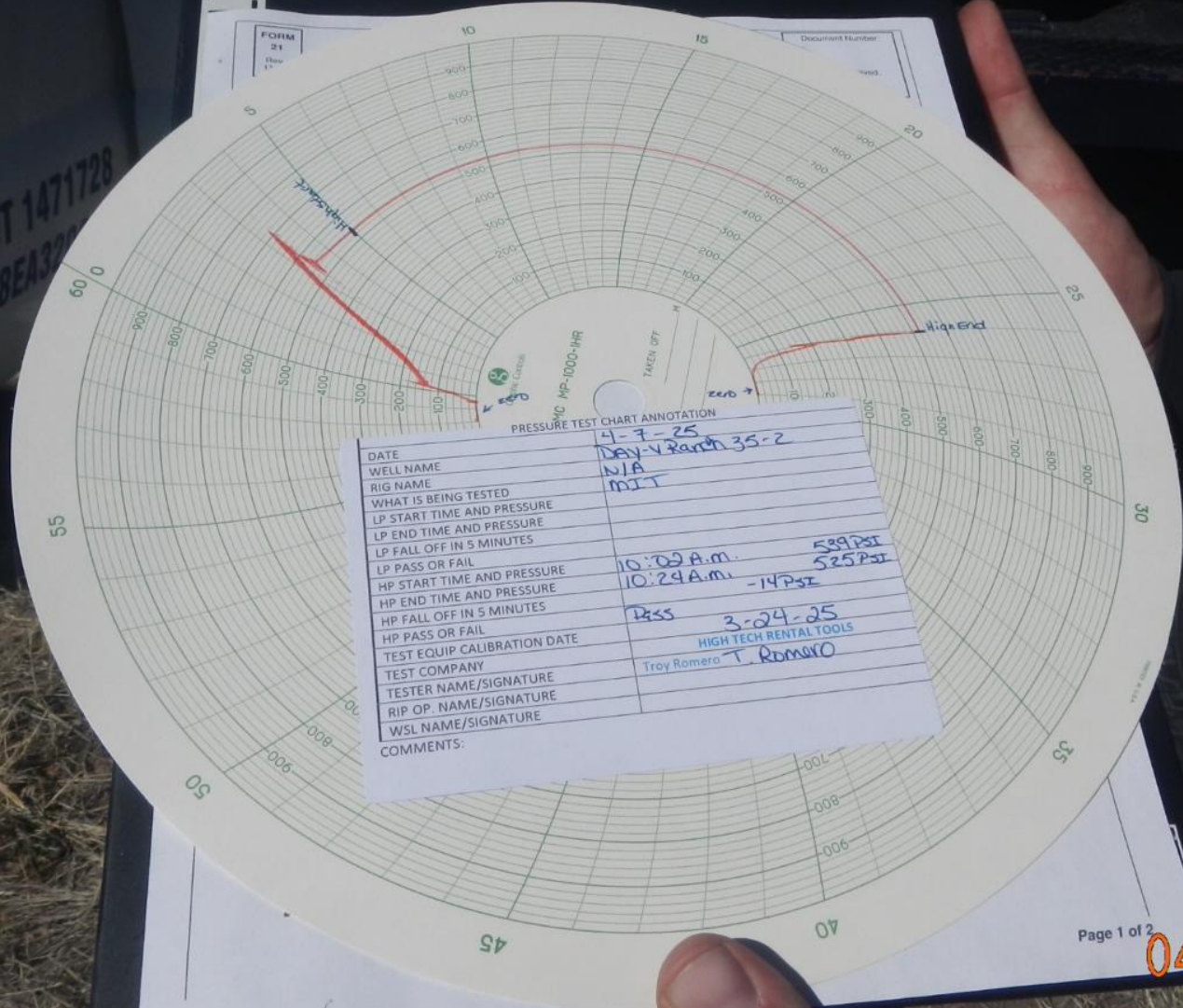
04.07.2025



FORM
21
Rev
12

Document Number

USDOT 1471728
VIN 8EA322



PRESSURE TEST CHART ANNOTATION

DATE	4-7-25
WELL NAME	Day-V Ranch 35-2
RIG NAME	N/A
WHAT IS BEING TESTED	MJT
LP START TIME AND PRESSURE	
LP END TIME AND PRESSURE	
LP FALL OFF IN 5 MINUTES	
LP PASS OR FAIL	
HP START TIME AND PRESSURE	10:09 A.M. 525 PSI
HP END TIME AND PRESSURE	10:24 A.M. 14 PSI
HP FALL OFF IN 5 MINUTES	
HP PASS OR FAIL	Pass
TEST EQUIP CALIBRATION DATE	3-24-25
TEST COMPANY	HIGH TECH RENTAL TOOLS
TESTER NAME/SIGNATURE	Troy Romero
RIP OP. NAME/SIGNATURE	T. Romero
WSL NAME/SIGNATURE	
COMMENTS:	

04.07.2025