

Inspection Photos
Location: Klingon 41-32 TR
Location ID: 308322
API # 05-071-07828



Photo 1 –Well placard



Photo 2 – Wellhead

Inspection Photos
Location: Klingon 41-32 TR
Location ID: 308322
API # 05-071-07828

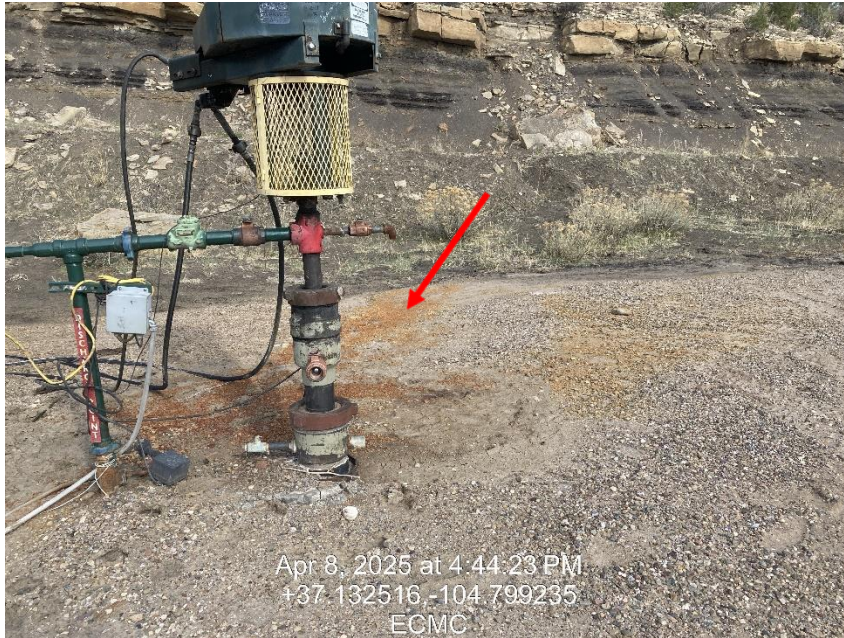


Photo 3 – Stained soils at wellhead



Photo 4 – Stained soils

Inspection Photos
Location: Klingon 41-32 TR
Location ID: 308322
API # 05-071-07828



Photo 5 – Impacted soils



Photo 6 – Impacted soils

Inspection Photos
Location: Klingon 41-32 TR
Location ID: 308322
API # 05-071-07828



Photo 7 – Impacted soils



Photo 8 – Breach in BMP, stormwater overtopping BMP

Inspection Photos
Location: Klingon 41-32 TR
Location ID: 308322
API # 05-071-07828



Photo 9 – Stormwater running down access road



Photo 10 – Pit Facility ID 270538