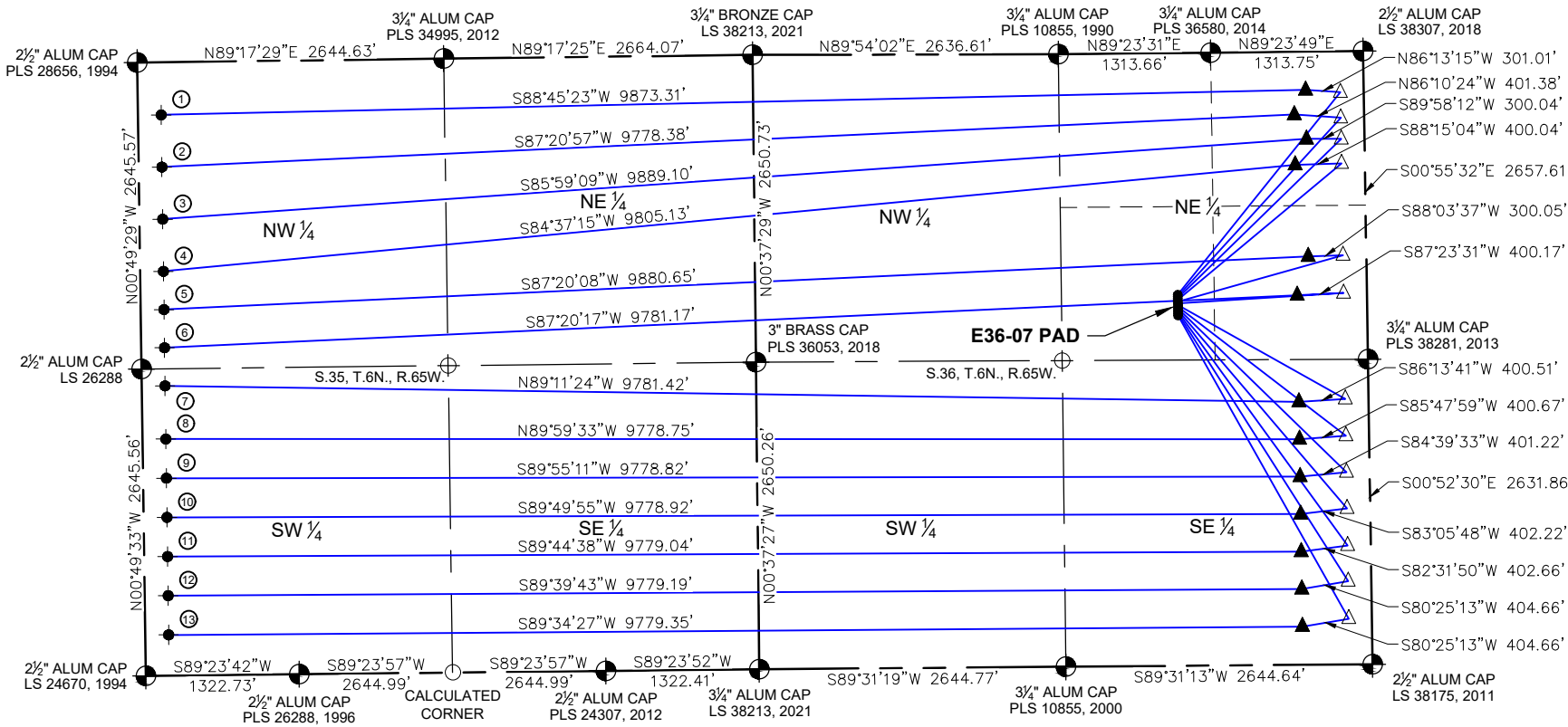
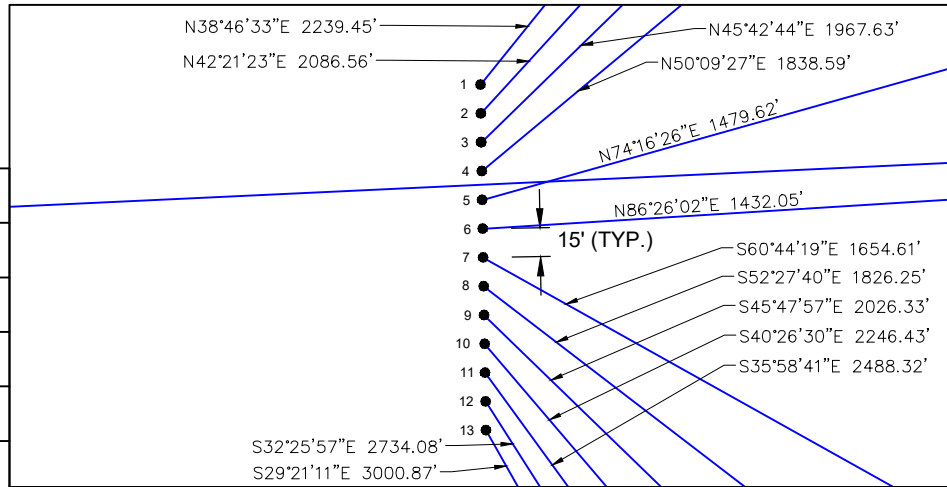


## E36-07 PAD MULTI-WELL LOCATION PLAT



### PROPOSED WELLBORE DIRECTION DATA E36-07 MULTI SLOTS 1-13



SLOT	WELL NAME	SURFACE HOLE LOCATION							TOP OF PRODUCTIVE ZONE		LANDING POINT		BOTTOM HOLE LOCATION	
		LATITUDE	LONGITUDE	FNL	FEL	QTR.-QTR.	ELEVATION	PDOP	F N/S L	F E L	F N/S L	F E L	F N/S L	F W L
1	Apache State E35-684	40.443911	-104.607639	2084'	1631'	SWNE	4650'	1.6	353' FNL (Sec. 36)	200' (Sec. 36)	330' FNL (Sec. 36)	500' (Sec. 36)	454' FNL (Sec. 35)	200' (Sec. 35)
2	Apache State E35-679	40.443870	-104.607639	2099'	1631'	SWNE	4650'	1.6	572' FNL (Sec. 36)	200' (Sec. 36)	541' FNL (Sec. 36)	600' (Sec. 36)	904' FNL (Sec. 35)	200' (Sec. 35)
3	Apache State E35-674	40.443828	-104.607639	2114'	1631'	SWNE	4650'	1.6	755' FNL (Sec. 36)	200' (Sec. 36)	752' FNL (Sec. 36)	500' (Sec. 36)	1354' FNL (Sec. 35)	200' (Sec. 35)
4	Apache State E35-669	40.443787	-104.607638	2129'	1631'	SWNE	4650'	1.6	966' FNL (Sec. 36)	200' (Sec. 36)	974' FNL (Sec. 36)	600' (Sec. 36)	1804' FNL (Sec. 35)	200' (Sec. 35)
5	Apache State E35-661	40.443746	-104.607638	2144'	1631'	SWNE	4650'	1.6	1758' FNL (Sec. 36)	200' (Sec. 36)	1765' FNL (Sec. 36)	500' (Sec. 36)	2134' FNL (Sec. 35)	200' (Sec. 35)
6	Apache State E35-656	40.443705	-104.607638	2159'	1631'	SWNE	4650'	1.6	2085' FNL (Sec. 36)	200' (Sec. 36)	2099' FNL (Sec. 36)	600' (Sec. 36)	2464' FNL (Sec. 35)	200' (Sec. 35)
7	Apache State E35-646	40.443664	-104.607637	2174'	1631'	SWNE	4649'	1.6	2291' FSL (Sec. 36)	200' (Sec. 36)	2268' FSL (Sec. 36)	600' (Sec. 36)	2499' FSL (Sec. 35)	200' (Sec. 35)
8	Apache State E35-640	40.443622	-104.607637	2189'	1631'	SWNE	4649'	1.6	1972' FSL (Sec. 36)	200' (Sec. 36)	1946' FSL (Sec. 36)	600' (Sec. 36)	2040' FSL (Sec. 35)	200' (Sec. 35)
9	Apache State E35-635	40.443581	-104.607637	2204'	1631'	SWNE	4649'	1.6	1657' FSL (Sec. 36)	200' (Sec. 36)	1623' FSL (Sec. 36)	600' (Sec. 36)	1702' FSL (Sec. 35)	200' (Sec. 35)
10	Apache State E35-630	40.443540	-104.607636	2219'	1631'	SWNE	4649'	1.6	1345' FSL (Sec. 36)	200' (Sec. 36)	1300' FSL (Sec. 36)	600' (Sec. 36)	1364' FSL (Sec. 35)	200' (Sec. 35)
11	Apache State E35-625	40.443499	-104.607636	2234'	1631'	SWNE	4649'	1.6	1026' FSL (Sec. 36)	200' (Sec. 36)	977' FSL (Sec. 36)	600' (Sec. 36)	1026' FSL (Sec. 35)	200' (Sec. 35)
12	Apache State E35-620	40.443458	-104.607636	2249'	1631'	SWNE	4649'	1.6	717' FSL (Sec. 36)	200' (Sec. 36)	653' FSL (Sec. 36)	600' (Sec. 36)	688' FSL (Sec. 35)	200' (Sec. 35)
13	Apache State E35-615	40.443417	-104.607635	2264'	1631'	SWNE	4649'	1.6	394' FSL (Sec. 36)	200' (Sec. 36)	330' FSL (Sec. 36)	600' (Sec. 36)	350' FSL (Sec. 35)	200' (Sec. 35)

**LEGEND**

- ⊕ = FOUND MONUMENT
- ⊙ = CALCULATED POSITION
- = PROPOSED WELL
- = BOTTOM HOLE
- ▲ = LANDING POINT
- △ = TOP OF PRODUCTION ZONE

**NOTES:**

- 1) ALL BEARINGS ARE GRID BEARINGS OF THE COLORADO STATE PLANE COORDINATE SYSTEM, NORTH ZONE, NORTH AMERICAN DATUM 1983/2011. THE LINEAL DIMENSIONS AS SHOWN HEREIN ARE GRID DISTANCES BASED UPON THE "U.S. SURVEY FOOT." TO GET GROUND DISTANCES MULTIPLY SHOWN DISTANCE BY 1.00025857.
- 2) DISTANCES ARE MEASURED AT 90° FROM SECTION LINE OF THE SIXTH PRINCIPAL MERIDIAN, COUNTY OF WELD, STATE OF COLORADO.
- 3) GROUND ELEVATIONS ARE BASED ON AN OBSERVED GPS ELEVATION (NAVD 1988 DATUM).
- 4) SURFACE USE: "IRRIGATED CROP LAND"
- 5) INSTRUMENT OPERATOR: LOGAN THIELBERT
- 6) THIS MAP DOES NOT REPRESENT A BOUNDARY SURVEY.